

Section 6: Five-Year Capital Plan Summary



A New Kind of Energy

Aerospace – Located at Tulsa International Airport, American Airlines plays a vital role as one of the world’s largest and complex aviation maintenance facilities. The aviation base is the headquarters for all Maintenance and Engineering activities and is one of the largest private employers in Oklahoma.



FISCAL YEARS 2009-2013 CAPITAL PLAN

This document serves as a basis for a planning framework through which future capital funding and construction programs can be developed.

The City of Tulsa has had an aggressive capital improvements program for twenty-five years. The Third Penny Sales Tax program by itself has financed almost \$1.7 billion in needed projects during this time. That amount has been augmented by \$1.3 billion of additional general obligation and revenue bond dollars and millions more from federal grants and loans. A \$250 million General Obligation Bond program was approved by the voters on April 5, 2005. Four of five planned issues have been completed, totaling \$198 million in currently available funds. The fifth issue is planned in February 2009 for another \$52 million. Capital funding has been and will continue to be used for roads, sanitary sewer facilities, flood control, economic development, Tulsa Airports, parks, and water system improvements that cost over \$100,000 and have a useful life of over five years. These improvements consist of both new construction projects as well as maintenance of existing facilities.

On May 9, 2006, voters approved an extension of the Third Penny Sales Tax program to provide \$465 million for capital projects in all areas of the city. The first sales tax revenue was received in September 2006. This approval provides for the issuance of Advance Funding Sales Tax Revenue Bonds to fully fund the uncompleted projects in the 2001 Sales Tax Program. These bonds were sold in June 2006. An additional \$395 million in new projects and programs were approved as well. The first of these received funding in FY 07. The remainder will be funded as revenue is received over the six year program on the traditional pay as you go basis. Information about the proposed program is contained in Approved Programs, Section 7, of this document including a listing of the proposed funding for Fiscal Year 2009.

Starting with 2008-2012 CIP, the structure of the CIP Inventory and funding table was changed to reflect future funding constraints and the impact of capital projects on the operating budget. With the adoption of the 2009-2013 CIP, the inventory will include all identified unfunded projects as it has in the past, however, the funding table will include only the high priority projects which can realistically be funded within the 2009-2013 time frame taking into consideration the anticipated size of future capital improvement packages. The departmental funding shown in the funding table will be based on historical levels of funding as approved by the citizens of the City of Tulsa and anticipated enterprise funded capital programs.

The recommendations contained in this document set the parameters for the continuing discussions regarding Tulsa's on-going capital needs. This five-year plan continues the policy of a balanced use of available capital financing sources and proposed bond financing near the middle of five-year sales tax programs.

FIVE-YEAR LEVEL OF RECOMMENDED FUNDING

BY DEPARTMENT

Fiscal Years 2009 - 2013
(All Dollars in Thousands)

Project Type	Total Requests	Recommended Funding	Percent Funding
Police Department Projects	\$ 5,750	\$ 5,750	100%
Fire Department Projects	25,150	4,500	18%
Information Technology Department	1,475	1,475	100%
Total Public Safety and Protection	32,375	11,725	36%
Park and Recreation Projects	8,865	5,280	60%
Gilcrease Museum Projects	2,115	2,115	100%
Tulsa Convention Center and Performing Arts Center	3,396	3,396	100%
River Parks Projects	6,200	2,600	42%
Total Cultural Development and Recreation	20,576	13,391	65%
Street and Expressway Projects	2,258,200	83,200	4%
Water System Projects	311,045	103,995	33%
Sanitary Sewer System Projects	341,017	197,627	58%
Flood Control Projects	57,150	25,000	44%
Facilities Maintenance Projects	53,400	4,470	8%
Total Public Works and Development	3,020,812	414,292	14%
Economic Development and Real Estate Mgmt.	131,900	94,450	72%
Working In Neighborhoods (WIN)	8,400	5,800	69%
Total Social and Economic Development	140,300	100,250	71%
Airport Projects	150,366	150,366	100%
Tulsa Transit Projects	10,500	2,100	20%
Total Transportation	160,866	152,466	95%
Equipment Management Projects	4,300	4,100	95%
Capital Equipment Replacement	60,300	6,228	10%
Total Administrative and Support Services	64,600	10,328	16%
Total of All Capital Project Types	\$ 3,439,529	\$ 702,452	20%

A SUMMARY OF THE CAPITAL BUDGET AND FIVE-YEAR CAPITAL PLAN

The following is a summary of all proposed, but unfunded capital expenditures for the next five years. It does not include project allocations in previously approved capital programs. *The amount shown does not include each department's funding from the approved 2006 Sales Tax Extension or Advance Funding program.*

<u>PROGRAM/DEPARTMENT</u>	<u>Proposed 5-Year Funding</u>
<u>PUBLIC SAFETY AND PROTECTION</u>	
<i>Police</i>	<i>\$5 million</i>
The Police Departments highest priority is funding for COMPSAT, a strategic crime analysis program. A new downtown support policing facility will be needed to support the BOK Arena which has been added for future bond program consideration.	
<i>Fire</i>	<i>\$5 million</i>
The Apparatus Replacement Program is still the department's highest priority. Props for the new Fire Training Academy and mobile data terminals are also high priority projects in the Fire Department Inventory.	
<i>Information Technology Department</i>	<i>\$2 million</i>
Currently, upgrading the City's time and attendance system is the IT Departments highest priority. Other future high priority projects include the updating the email system and the replacement of the existing Financial Management and Control system.	
<i>Total Public Safety and Protection</i>	
<i>\$12 million</i>	
<u>CULTURAL DEVELOPMENT AND RECREATION</u>	
<i>Park and Recreation Department</i>	<i>\$5 million</i>
Implementation of the adopted 10-year master development plan for park facilities and resource utilization study will continue.	
<i>Gilcrease Museum</i>	<i>\$2 million</i>
Funding from future programs is proposed to protect the \$1 billion collection and improve the facilities located on the grounds of the museum.	
<i>Tulsa Convention Center and Performing Arts Center</i>	<i>\$4 million</i>
The highest priority at the TCC is the replacement of the Exhibit Hall sound system and continued interior renovation.	
The highest priority at the PAC is the replacement of the fire alarm system and installing fire sprinklers in the unsprinkled areas of the building.	
<i>River Parks</i>	<i>\$3 million</i>
A consistent maintenance program for all of the River Parks' facilities and expansion of the trail system on the east bank of the Arkansas River are the Authority's highest priorities.	
<i>Total Cultural Development and Recreation</i>	
<i>\$14 million</i>	
<u>PUBLIC WORKS</u>	
<i>Streets & Expressways</i>	<i>\$83 million</i>
Future General Obligation bond issues and sales tax will be needed to finance high priority street projects. The top priority for funding remains the maintenance of residential and arterial streets.	

<u>PROGRAM/DEPARTMENT</u>	<u>Proposed 5-Year Funding</u>
<p><i>Water System</i></p> <p>The 2005 update of the Comprehensive Water System Study identifies the most critical needs in this area, such as protecting the Spavinaw watershed from pollution and the maintenance of the existing distribution system. Plans for future expansions are also identified.</p>	\$104 million
<p><i>Sanitary Sewer</i></p> <p>All State and Federal mandates have been funded and are complete. This plan proposes state loans, bonds and enterprise funds to finance system improvements in the five-year period based upon the recently completed Comprehensive Wastewater System Study.</p>	\$198 million
<p><i>Flood Control</i></p> <p>Future programs should include additional flood-control projects as identified in the Citywide Flood Control Plan. Channel erosion control and rehabilitation as well as urgent small drainage improvements are identified as the highest priorities in the plan.</p>	\$25 million
<p><i>Public Facilities Maintenance</i></p> <p>The maintenance of capital projects to lengthen their useful lives is critical. Also critical are improvements to security at most public facilities. Additional sources of maintenance capital need to be identified, as an inventory backlog of over \$64 million exists.</p>	\$5 million
<i>Total Public Works</i>	\$415 million
<u>SOCIAL AND ECONOMIC DEVELOPMENT</u>	
<p><i>Economic Development and Real Estate Management Projects</i></p> <p>Redevelopment of the East Village on the eastern edge of downtown Tulsa is proposed. The development may include the construction of a new minor league baseball stadium and associated retail support. Streetscaping in identified redevelopment areas and infill utility assistance are also high priorities.</p>	\$94 million
<p><i>Working In Neighborhoods (WIN)</i></p> <p>The replacement of the existing Animal Shelter is proposed at an estimated cost of \$6 million.</p>	\$6 million
<i>Total Social and Economic Development</i>	\$100 million
<u>TRANSPORTATION</u>	
<p><i>Airport Projects</i></p> <p>FAA Grants, landing fees, passenger ticket fees and other sources such as property leases to airport tenants will provide the financing for the Airport Capital Plan. The highest priority programs at the airport are the Noise Mitigation Program and improvements to the Terminal.</p>	\$150 million
<p><i>Tulsa Transit Projects</i></p> <p>MTTA's highest priority is replacement of its aging bus fleet. Due to federal earmark allocations, it is anticipated that this will require 100% local funds in the future.</p>	\$2 million
<i>Total Transportation</i>	\$152 million

<u>PROGRAM/DEPARTMENT</u>	<i>Proposed 5-Year Funding</i>
<u>ADMINISTRATIVE AND SUPPORT SERVICES</u>	
<i>Equipment Management Projects</i> The top priorities are the expansion and addition of facilities for maintenance activity. A second phase of the expansion and renovation of facilities located at the Newblock compound is proposed for the next funding program.	<i>\$4 million</i>
<i>Capital Equipment Replacement</i> Police and Fire vehicles, EMS vehicles, personal computers, and other equipment are on-going needs. Additional funding, as identified in the 2008 Equipment Study, will be needed on an on going basis from future funding programs.	<i>\$6 million</i>
<i>Total Administrative and Support Services</i>	<i>\$10 million</i>
<u>TOTAL PROPOSED FIVE-YEAR FUNDING PROGRAM</u>	<i>\$703 million</i>

CITY OF TULSA
 FISCAL YEARS 2009-2013 CAPITAL IMPROVEMENTS FUNDING SCHEDULE
 SUMMARY OF FUNDING REQUESTS BY DEPARTMENT *
 Prepared by the Department of Finance in Collaboration with the Operating Departments
 All Dollars in Thousands

CITY OF TULSA
 FISCAL YEARS 2009-2013 CAPITAL IMPROVEMENTS FUNDING SCHEDULE
 SUMMARY OF HIGH PRIORITY FUNDING REQUESTS BY DEPARTMENT
 Prepared by the Department of Finance in Collaboration with the Operating Departments
 All Dollars in Thousands

Project Type	Est. Cost	FY09	FY10	FY11	FY12	FY13	Total
Police Department Projects	\$5,750	\$0	\$500	\$4,500	\$0	\$750	\$5,750
Fire Department Projects	\$25,150	\$0	\$1,500	\$1,500	\$0	\$1,500	\$4,500
Information Technology Department	\$1,475	\$0	\$0	\$0	\$0	\$1,475	\$1,475
Total Public Safety and Protection	\$32,375	\$0	\$2,000	\$6,000	\$0	\$3,725	\$11,725
Park and Recreation Department Projects	\$8,865	\$0	\$460	\$985	\$1,325	\$2,510	\$5,280
Gilcrease Museum Projects	\$2,115	\$0	\$550	\$115	\$0	\$1,450	\$2,115
Tulsa Convention Center Projects	\$2,185	\$0	\$0	\$720	\$280	\$1,185	\$2,185
Performing Arts Center Projects	\$1,211	\$0	\$1,211	\$0	\$0	\$0	\$1,211
River Parks Projects	\$6,200	\$0	\$200	\$200	\$200	\$2,000	\$2,600
Total Cultural Devel. and Recreation	\$20,576	\$0	\$2,421	\$2,020	\$1,805	\$7,145	\$13,391
Street and Expressway Projects	\$2,258,200	\$0	\$18,700	\$19,200	\$28,100	\$17,200	\$83,200
Water System Projects	\$311,045	\$30,050	\$21,145	\$23,125	\$7,525	\$22,150	\$103,995
Sanitary Sewer System Projects	\$341,017	\$23,235	\$59,152	\$41,720	\$35,895	\$37,625	\$197,627
Flood Control Projects	\$57,150	\$2,000	\$4,700	\$4,100	\$5,200	\$9,000	\$25,000
Facilities Maintenance Projects	\$53,400	\$0	\$1,000	\$1,000	\$1,000	\$1,470	\$4,470
Total Public Works	\$3,020,812	\$55,285	\$104,697	\$89,145	\$77,720	\$87,445	\$414,292
Economic Development and Real Estate Management	\$131,900	\$88,000	\$1,450	\$1,500	\$500	\$3,000	\$94,450
Working In Neighborhoods (WIN)	\$8,400	\$0	\$0	\$580	\$5,220	\$0	\$5,800
Total Social and Economic Development	\$140,300	\$88,000	\$1,450	\$2,080	\$5,720	\$3,000	\$100,250
Tulsa Airports Projects	\$150,366	\$12,120	\$25,930	\$24,211	\$79,805	\$8,300	\$150,366
Metropolitan Tulsa Transit Authority Projects	\$10,500	\$0	\$0	\$0	\$0	\$2,100	\$2,100
Total Transportation	\$160,866	\$12,120	\$25,930	\$24,211	\$79,805	\$10,400	\$152,466
Equipment Management Projects	\$4,300	\$0	\$0	\$400	\$3,400	\$300	\$4,100
Capital Equipment Replacement	\$60,300	\$0	\$0	\$0	\$0	\$6,228	\$6,228
Total Administrative and Support	\$64,600	\$0	\$0	\$400	\$3,400	\$6,528	\$10,328
Total of All Capital Project Types	\$3,439,529	\$155,405	\$136,498	\$123,856	\$168,450	\$118,243	\$702,452

* Amounts shown do not reflect the value of the Capital Inventory. Dollars reflect the estimated cost of those projects needed in the next five years.

CITY OF TULSA
FISCAL YEARS 2009-2013 CAPITAL IMPROVEMENTS FUNDING SCHEDULE
SUMMARY OF FUNDING REQUESTS BY FUNDING SOURCE *

Prepared by the Department of Finance in Collaboration with the Operating Departments
 All Dollars in Thousands

CITY OF TULSA
FISCAL YEARS 2009-2013 CAPITAL IMPROVEMENTS FUNDING SCHEDULE
SUMMARY OF HIGH PRIORITY FUNDING REQUESTS BY DEPARTMENT
 Prepared by the Department of Finance in Collaboration with the Operating Departments
 All Dollars in Thousands

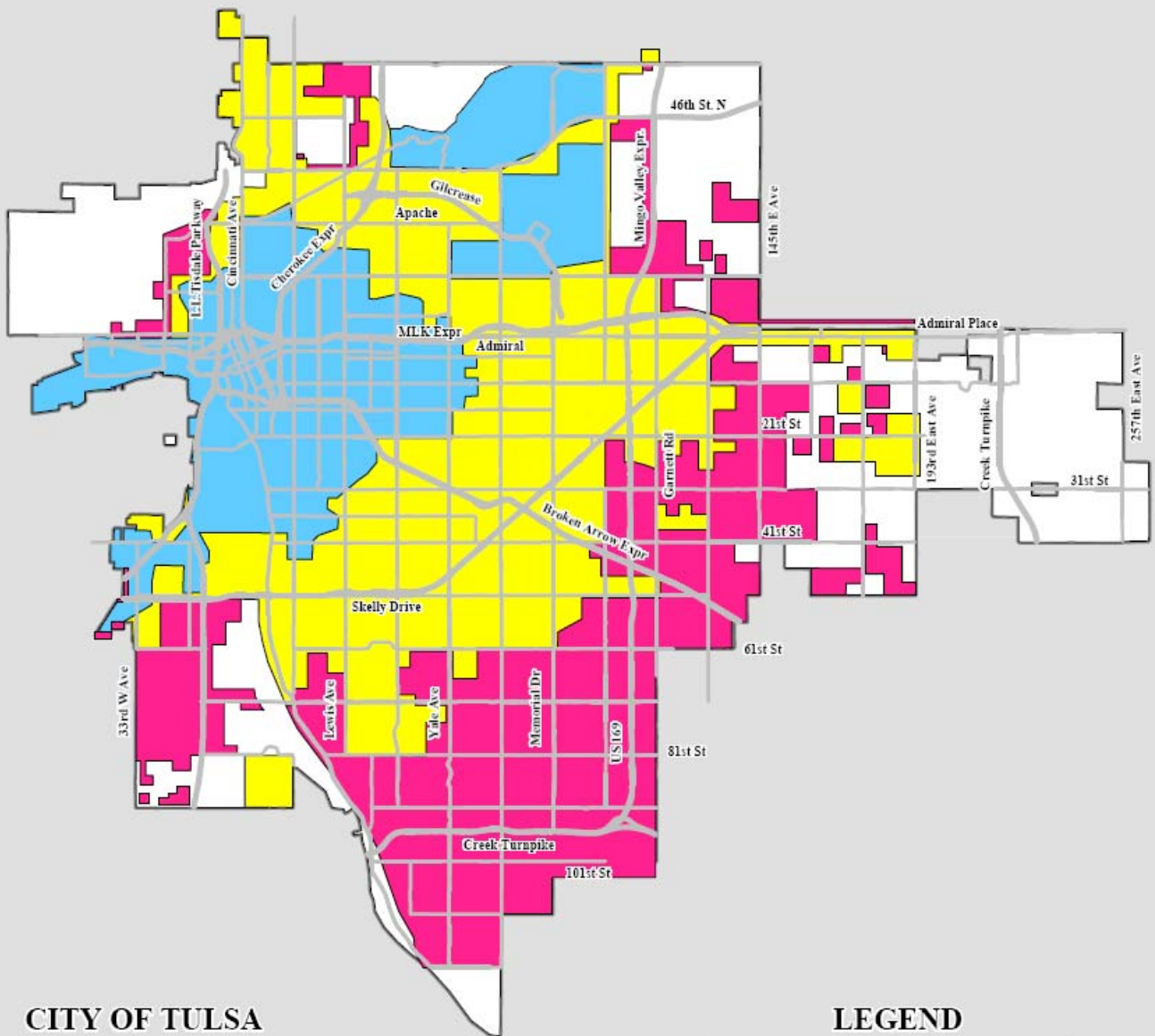
<u>Funding Source</u>	<u>Est. Cost</u>	<u>FY09</u>	<u>FY10</u>	<u>FY11</u>	<u>FY12</u>	<u>FY13</u>	<u>Total</u>
Future Bond Program	\$2,054,461	\$88,000	\$35,521	\$39,050	\$42,675	\$1,400	\$206,646
Future Sales Tax Program (2013 ST Extension)	\$265,510	\$0	\$0	\$0	\$0	\$50,288	\$50,288
Water Enterprise	\$194,125	\$10,500	\$4,425	\$6,225	\$7,525	\$9,150	\$37,825
Water Revenue Bond	\$116,920	\$19,550	\$16,720	\$16,900	\$0	\$13,000	\$66,170
State Water Revolving Loan	\$0	\$0	\$0	\$0	\$0	\$0	\$0
Sewer Enterprise	\$43,410	\$3,540	\$1,375	\$2,695	\$4,185	\$6,135	\$17,930
State Sewer Loan Program	\$285,737	\$19,695	\$50,427	\$32,675	\$25,160	\$27,870	\$155,827
Storm Sewer Enterprise	\$25,000	\$2,000	\$2,100	\$2,100	\$2,100	\$2,100	\$10,400
Airport and FAA Funds	\$150,366	\$12,120	\$25,930	\$24,211	\$79,805	\$8,300	\$150,366
E911 Fees	\$0	\$0	\$0	\$0	\$0	\$0	\$0
State and Federal Grants	\$304,000	\$0	\$0	\$0	\$7,000	\$0	\$7,000
Other Funding Sources	\$0	\$0	\$0	\$0	\$0	\$0	\$0
Total Funding by Source	<u>\$3,439,529</u>	<u>\$155,405</u>	<u>\$136,498</u>	<u>\$123,856</u>	<u>\$168,450</u>	<u>\$118,243</u>	<u>\$702,452</u>

Other Funding Sources: Existing Sales Tax Programs; Golf Course Fees; Tax Increment Financing;
 Equipment Management Fund; Special Purpose Revenue Bonds; and Private Matching Funding.

** Amounts shown do not reflect the value of the Capital Inventory. Dollars reflect the estimated cost of those projects needed in the next five years.*

Urbanization Trends 1900 - 2007

Map 1

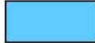





CITY OF TULSA



Department of Finance
Budget and Planning Division
March 2008

LEGEND

	1900 - 1945 Urbanization
	1946 - 1969 Urbanization
	1970 - 2007 Urbanization
	Within the City Limits (But Not Urbanized)