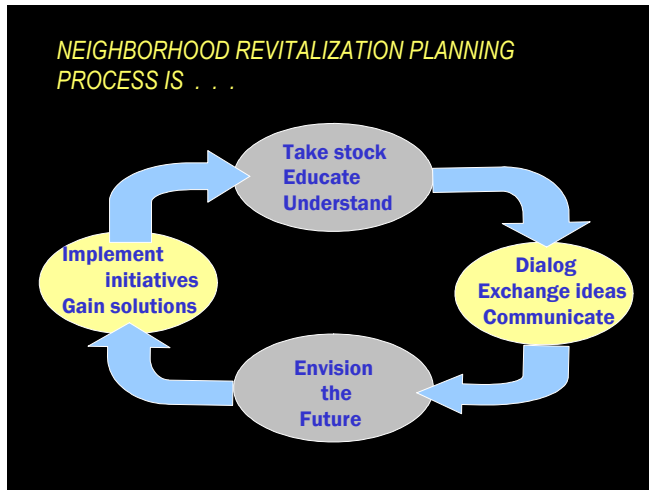


# PROCESS

East Tulsa Neighborhood Detailed Implementation Plan – Phase 1

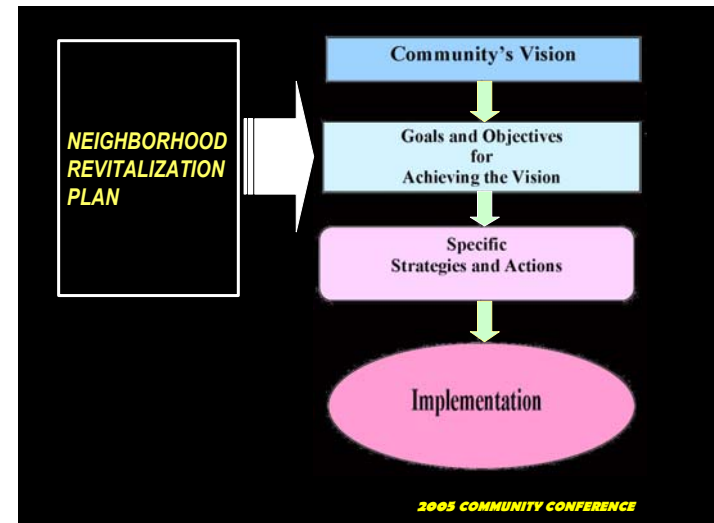
## **General Process**



The East Tulsa Community Planning Team was organized from a broad spectrum of community citizens, merchants, neighborhood associations and community leaders. The neighborhood revitalization planning process is depicted in the exhibit on the left.

The value in the approach is demonstrated by the exceptional participation of East Tulsans in developing their vision and preparing the Plan to accomplish that vision.

The process of developing that neighborhood revitalization plan is depicted in the exhibit on the right. East Tulsans efforts to implement the Plan are demonstrated through their ongoing involvement in various implementation strategies, actions and programs. These efforts are directed towards growing and improving the East Tulsa community.



## **East Tulsa Community Planning Team**

The East Tulsa Community Planning Process began initially with inquiries made to the City by several neighborhood groups and associations for assistance in planning for their community. Contact names and information was compiled from various associations and local leaders. Public notice was given through conventional and electronic mailings. The initial neighborhood planning process began with a public meeting held September 28, 2004 at Martin Regional Library, located at 2601 S. Garnett Road. The City was requested to formulate the framework for the planning process in East

## PROCESS

### East Tulsa Neighborhood Detailed Implementation Plan – Phase 1

Tulsa. From this foundation, the East Tulsa Community Planning Team (ETCPT) was organized from residents, business owners and merchants, neighborhood association members, and interested citizens (refer to Appendix S). All those who attended an ETCPT meeting and provided contact information received notice of coming meetings and events, and are included in the planning process. To date, nearly 175 different people have participated in some capacity in ETCPT planning efforts. The ETCPT meetings provided a framework that encouraged stakeholders to identify the needs of the community and to discuss, develop and suggest strategies to advance the physical, economic and social well being of East Tulsa. Refer to Appendix U for list of participants.

**A**n added component of the East Tulsa Community Planning Team was the Youth Planning Subcommittee that worked as an integral part of ETCPT, and which also met regularly but separately from the ETCPT. Other public participation and community-building activities included the 2005 Community Conference sponsored by South and East Alliance of Tulsa (S.E.A.T.). A presentation of ETCPT planning efforts was just one of dozens of programs presented during the two-day event that targeted community building initiatives in Tulsa and its surrounding communities. The East Tulsa Prevention Coalition continues too in its efforts to foster a safe, secure and positive environment and to offer proactive programs for area youth. In addition to these larger efforts, other planning-related meetings included those of the numerous area neighborhood associations. All of these efforts were conducted in the spirit of working together for positive exchange of information, education and progress for East Tulsa.

*One of the particularly valuable outcomes of the Youth Planning Subcommittee was “The Whodunit Teen Summit” composed of students from East Central and Union Alternative High Schools, sponsored by The Community Service Council of Greater Tulsa. This one day event gave East Tulsa teens (the future leaders of Tulsa) the opportunity to voice their concerns and opinions (refer to Appendix T).*

*Workshops included “A Pocket Full of Hope” with keynote speaker Dr. Lester Shaw, Executive Director, Community Service Council of Greater Tulsa. Other summit participants included the Red Cross, Palmer Drug Counseling Center, and Margaret Hudson Center. All topics were chosen by East Tulsa teen’s and addressed area youth needs. The summit provided an in-depth look at the issues that Generation ‘Y’ will face in the future and revealed some of the*

**T**aken collectively, public participation in East Tulsa planning has been extensive, and the work of the ETCPT has been one focus of formal physical planning efforts. East Tulsa Planning Team’s goals, plans and implementation steps will contribute positively to the creation of employment opportunity and increasing disposable income for area residents as

## PROCESS

East Tulsa Neighborhood Detailed Implementation Plan – Phase 1

well as bringing about improvement in certain trends in East Tulsa. Refer to Appendix A for selected economic and demographic data for the East Tulsa area.

### ***Continuing Process***

**O**ne challenge that will likely continue is bringing together the different demographic groups into the neighborhood planning process. A continuing, targeted emphasis is necessary to achieve the goal of broad-based community involvement and participation. This goal is particularly important if East Tulsa is to successfully weave itself into a durable, vital, richly textured blanket of an urban village for the 21<sup>st</sup> Century.

**S**uccessfully engaging all East Tulsans is crucial to building on the multiple opportunities and advantages its great diversity offers. It is intended that, once this first phase of the East Tulsa plan is completed, then a second phase will begin and that each succeeding planning phase will further expand community participation in the planning process. The resulting plan for the overall planning area of East Tulsa will then reflect the consensus of area goals and preferences.

*Those East Tulsa area neighborhood associations registered or listed in the City of Tulsa Mayor's Office and that participated in the ETCPT study include the following:*

*Columbus Neighborhood Association,  
Cooper Neighborhood Association,  
Crescent Height,  
Magic Circle,  
Mayo Plaza Watch,  
Mingo Valley,  
Mingo Valley Homeowners,  
Moeller Heights,  
Park Plaza VI & VII,  
South and East Tulsa Alliance,  
Summerfield South,  
Tower Heights/Tulsa Alliance of  
Neighborhoods,  
Wagon Wheel, and  
Western Village.*

*In addition, there at least 25 other associations listed in East Tulsa.*

*Other area organizations and business groups with special interest in East Tulsa include: the East Tulsa Prevention Coalition, the Greater Hispanic Chamber of Commerce, and the Route 66 Business League of Tulsa.*