



CITY OF
Tulsa
A New Kind of Energy™

DEPARTMENT OF FINANCE

MONTHLY FINANCIAL REPORT
EXECUTIVE SUMMARY

(Also available at www.cityoftulsa.org)

Period Ending July 31, 2010

Michael P. Kier
Director of Finance



CITY OF
Tulsa
A New Kind of Energy™

MONTHLY FINANCIAL REPORT EXECUTIVE SUMMARY

Dewey Bartlett
Mayor

DEPARTMENT OF FINANCE

Michael P. Kier, Director

Patrick B. Connelly, Budget Division Manager

Robert S. Jones, Jr., Treasury Division Manager

Larry C. Hood, Purchasing Agent

David W. Bryant, CPA, Controller

Foreword

Total revenues as reflected on the Consolidated Statement of Operations were \$53 million, a 10.1% or \$6 million decline from the prior year. Revenue from grants and other government declined by \$2.3 million and charges for services declined by \$2.1 million, primarily in water and sewer charges. Total expenditures and expenses stood at \$43.1 million a decline of 15.7%.

Employment at the end of June for the Tulsa Metropolitan Statistical Area (TMSA) stood at 430,400 individuals employed. This is a decline of 3.6% or 15,700 jobs from the prior year. In the same period, the twelve-month moving average unemployment rate for the TMSA stood at 7.5%, .7% higher than the State of Oklahoma and 2.3% less than the unemployment rate for the nation. At all levels, these rates have escalated over the last year.

Construction permits for the first 6 months of the calendar year reflect no change in the number of single-family units permitted for construction. While there has been virtually no activity in the multifamily area this year, there were 300 units permitted in the same period last year. The total value of construction permits for retail, office and industrial construction last year was approximately \$63.8 million. During the same period in the current year, the activity declined to about 1/3 of the previous level and the decline has spread across all three categories. There have been declines in the number of air passenger traffic of 1.6% and barge tonnage has declined by a little more than 5%. The total number of water and sewer customers has increased slightly over the level of one year ago.

Financing rates show a minor change in the 30-day Treasury bill over last year with the rate being at only .08%. There has been some decline in the interest rate environment for general obligation bonds and revenue bonds issued by municipalities over the last 12 months.

The General Fund revenues for the month of July exceeded budget projections by \$.5 million or 2.5%. During the month, with a budget including carry over items from the prior year of \$239.3 million, \$25.5 million was either expended, encumbered, or committed. That number represents 10.7% of the budget, is about even with the 10.8% expectation, and somewhat below the level reported in the prior year. Revenues in major funds were either at or ahead of expectations with the exception of the TMUA Sewer-Operating Fund, which was \$.4 million or 6.4% below budget expectations.



Michael P. Kier
Director of Finance

July 31, 2010

Table of Contents

	<i>PAGE</i>
Consolidated Statement of Operations	1-2
Economic Indicators.....	3-5
Estimated/Actual Revenue Charts.....	6-9
Expenditure Report - Major Funds.....	10-12
Status Report on Capital Improvement Funds	13-14
General Fund	
Balance Sheet.....	15
Statement of Revenue, Expenditures and Encumbrances.....	16
Expenditures, Encumbrances Analysis.....	17
Expenditures, Encumbrances Year to Date	18
Schedule of Sales Tax Revenue.....	19
Schedule of Use Tax Revenue	20
Tulsa Metropolitan Utility Authority	
Management Report - Water Operating Fund	21
Monthly Revenues, Billings, and Collections - Water Operating Fund	22-23
Water Pumpage	24
Rainfall.....	25
Management Report - Sewer Operating Fund	26
Monthly Revenues, Billings, and Collections - Sewer Operating Fund	27-28
Tulsa Authority for the Recovery of Energy	
Management Report - TARE Operating Fund	29
Monthly Revenues, Billings, and Collections - TARE Operating Fund	30-31
Stormwater Drainage Advisory Board	
Management Report - Stormwater Enterprise Fund	32
Monthly Revenues, Billings, and Collections - Stormwater Enterprise Fund	33-34
Fee-in-lieu Funds	35
Tulsa Airport Authority	36
Tulsa Airport Trust.....	37
Personal Services Accounts - Estimated/Actual.....	38-39
Overtime Expenditures	40
Position Status Report	41-42
Sinking Fund Expenditures.....	43
Investment Report	44-53

CITY OF TULSA
CONSOLIDATED STATEMENT OF OPERATIONS
YEAR ENDED July 31, 2010

	FY 2011		FY 2010		Year-to-year Change	Ref #	
	Amount	% of Total	Amount	% of Total			
REVENUES & OTHER FINANCING SOURCES:							
Revenues:							
Taxes:							
Sales taxes	\$16,521,224	31.15%	\$16,684,707	28.26%	-0.98%	1	(\$163,483)
Use taxes	1,400,983	2.64%	1,429,799	2.42%	-2.02%		(28,816)
Franchise taxes	1,920,964	3.62%	1,871,646	3.17%	2.64%	2	49,319
Property taxes	756,007	1.43%	487,226	0.83%	55.17%	3	268,782
Hotel/Motel tax	536,454	1.01%	554,584	0.94%	-3.27%		(18,131)
Special assessments	2,424,023	4.57%	3,148,419	5.33%	-23.01%	4	(724,396)
Total taxes	<u>23,559,655</u>	<u>44.42%</u>	<u>24,176,380</u>	<u>40.95%</u>	<u>-2.55%</u>		<u>(616,725)</u>
Charges for services:							
Water and sewer	13,228,174	24.94%	15,004,428	25.41%	-11.84%	5	(1,776,254)
Stormwater fees	1,912,850	3.61%	1,800,178	3.05%	6.26%		112,672
Refuse fees	1,796,560	3.39%	1,777,043	3.01%	1.10%		19,517
Airport charges	3,098,823	5.84%	3,407,272	5.77%	-9.05%		(308,449)
EMSA - Service fees	424,954	0.80%	424,216	0.72%	0.17%		738
Other	4,382,586	8.26%	4,580,703	7.76%	-4.33%		(198,117)
Total charges for services	<u>24,843,946</u>	<u>46.84%</u>	<u>26,993,839</u>	<u>45.72%</u>	<u>-7.96%</u>		<u>(2,149,893)</u>
Licenses and permits	595,756	1.12%	549,828	0.93%	8.35%		45,928
Revenue from grants and other governments	2,052,605	3.87%	4,383,796	7.43%	-53.18%	6	(2,331,191)
Investment income	670,703	1.26%	817,138	1.38%	-17.92%	7	(146,435)
Fines and forfeitures	656,034	1.24%	750,037	1.27%	-12.53%	8	(94,003)
Other revenue sources	660,876	1.25%	1,369,482	2.32%	-51.74%	9	(708,606)
Total revenue	<u>53,039,575</u>	<u>8.74%</u>	<u>59,040,501</u>	<u>100.00%</u>	<u>-10.16%</u>		<u>(6,000,925)</u>
Total revenue & other financing sources	<u>\$53,039,575</u>	<u>100.00%</u>	<u>\$59,040,501</u>	<u>100.00%</u>	<u>-10.16%</u>		<u>(\$6,000,925)</u>
EXPENDITURES/EXPENSES:							
Operating expenditures:							
Police	\$6,071,718	14.08%	\$7,250,509	14.17%	-16.26%	10	(\$1,178,791)
Fire	4,665,832	10.82%	4,898,560	9.58%	-4.75%		(232,728)
Public Works	10,297,714	23.88%	9,098,495	17.78%	13.18%	11	1,199,219
Airports	1,085,084	2.52%	1,099,812	2.15%	-1.34%		(14,728)
Transfers to agencies	1,246,398	2.89%	1,225,666	2.40%	1.69%		20,732
Other departments	6,523,745	15.13%	10,848,996	21.21%	-39.87%	12	(4,325,250)
Total operating	<u>29,890,492</u>	<u>69.32%</u>	<u>34,422,038</u>	<u>67.28%</u>	<u>-13.16%</u>		<u>(4,531,546)</u>
Capital outlay:							
Police	95,773	0.22%	221,745	0.43%	-56.81%	13	(125,972)
Fire	21,731	0.05%	19,329	0.04%	12.42%		2,402
Public Works	11,060,625	25.65%	14,951,278	29.22%	-26.02%	14	(3,890,652)
Other departments	429,999	1.00%	677,527	1.32%	-36.53%	15	(247,528)
Total capital outlay	<u>11,608,128</u>	<u>26.92%</u>	<u>15,869,879</u>	<u>31.02%</u>	<u>-26.85%</u>		<u>(4,261,751)</u>
Debt service:							
General long-term debt	(425)	0.00%	2,000	0.00%	NA		(2,425)
Water fund	942,926	2.19%	636,257	1.24%	48.20%	16	306,669
Sewer fund	678,475	1.57%	229,469	0.45%	195.67%	16	449,006
Total debt service & other financing uses	<u>1,620,976</u>	<u>3.76%</u>	<u>867,726</u>	<u>1.70%</u>	<u>86.81%</u>		<u>753,250</u>
Total expenditures/expenses	<u>\$43,119,596</u>	<u>100.00%</u>	<u>\$51,159,643</u>	<u>100.00%</u>	<u>-15.72%</u>		<u>(\$8,040,047)</u>
Net revenues over (under) expenses	<u>\$9,919,980</u>		<u>\$7,880,858</u>				
COMMITMENTS:							
Purchase orders and contracts	<u>\$149,211,146</u>		<u>\$200,415,332</u>				

*Ref: this is the reference number for the variance analysis on the next page.

CITY OF TULSA
CONSOLIDATED OPERATIONS VARIANCE ANALYSIS
July 31, 2010

1. Sales taxes — Sales tax collections are essentially unchanged with a small decline of \$163,483 (0.98%).
2. Franchise taxes — Franchise tax receipts from PSO and ONG are down \$54,750 (6.1%) and \$37,192 (14.3%), respectively due to lower energy prices. Cable TV receipts from Cox and AT&T increased \$102,688 (27.3%), due to a new Capital Contribution Fee that came into effect April 2010.
3. Property Taxes — \$283,501 was received from the County as proceeds from a special apportionment. It represents proceeds from the County's "Resale Property Fund" which is actually "penalty, interest and forfeitures which may accrue on delinquent ad valorem taxes...." and not the delinquent taxes themselves.
4. Special assessments — Downtown property owners have been invoiced \$2.4 million for the new Tulsa Stadium Improvement District (TSID) assessment. The billing of some property owners has been delayed pending public hearings resulting in a decrease of \$724,000 from July of last year.
5. Water and Sewer — Charges for water service declined \$1.5 million as the City experienced above normal rainfall in the early summer.
6. Revenue from grants and other governments — Vision 2025 receipts are down \$3.3 million. This revenue represents reimbursement for expenditures on approved projects, and spending has slowed since the completion of the BOK Arena. This decrease is partially offset by increases in federal reimbursements and HUD grants of \$613,000 and \$476,000, respectively.
7. Investment Income — Interest receipts have declined \$708,000 (51.7%) as a result of lower interest rates. The federal funds rate for July 2010 averaged 0.18% while the rate averaged 1.26% for July 2009.
8. Fines and forfeitures — Municipal Court fines are down \$83,539 (12.3%) due to a decrease in misdemeanor and code violation fines.
9. Other revenue sources — Revenue from the sale of City property decreased \$730,000 compared with July 2009.
10. Police and Fire department operating expenditures — The departments are experiencing reduced personnel costs.
11. Public Works operating expenditures — Last fiscal year, materials and supplies, primarily chemicals and electric utilities, decreased \$3 million over the prior 12-month period. These same areas have increased \$1 million in July 2010 over July 2009.
12. Other departments operating expenditures — In July 2009, Grants Administration expended \$3.6 million for child care facilities and the Gateway project. No similar expenditures were made in July 2010.
13. Police capital outlay — Police radio equipment and licensed vehicles decreased \$100,000. (55.5%).
14. Public Works capital outlay — Expenditures for building renovation projects decreased by \$3.3 million, primarily related to Tulsa Convention Center renovations in July 2009 that are now completed.
15. Other Departments capital outlay — Expenditures for IT Telecommunications Equipment decreased by \$175,000. Other decreases were in Park and Recreation \$85,000 in salaries and other services. However, these were partially offset by an increase of \$48,000 for vehicles in Development Services.
16. Debt Service — In July 2009, principal and interest payments on TMUA water and sewer fund debt were lowered by interest income credits which did not rise to a comparable level in 2010.

**Report on
Tulsa Economic Indicators
July, 2010**

TMSA economic conditions were largely unchanged in June. TMSA unemployment increased to 7.9% from a revised 7.8% in May. Wage and Salary Employment showed a slight decrease. This decrease was the first after five consecutive monthly increases and the Wage and Salary Employment 12 month moving average remains 4.9% less than the same time last year. Year to date Tulsa Airport traffic and air freight are down 1.6% and 3.5% respectively from the same time last year. Multi and single family building permits continue to lag previous years. Most notably, the 12 month moving average value of commercial building permits is now down to \$3.1 million a 73.7% decline from a year ago.

TMSA Wage and Salary Employment decreased 900 jobs during the month of June to a total of 407,800. The 12 month moving average in June declined 1,800 jobs to 414,700 from 416,500 a month ago. The service and manufacturing sectors added a combined 1,600 jobs while the trade sector lost 200. The June unemployment rate for the TMSA increased to 7.9% from May's 7.8%. The state unemployment rate increased to 6.8% in June while the national average decreased to 9.6%.

Single-family building permits issued in the month of June totaled 29 units. The 12 month moving average in June was 32 units, roughly equal to the total from a year ago. There were no multi-family building permits issued in June. The value of permits for new or expanded retail, office, and industrial projects in June totaled \$5.0 million. The 12 month moving average of \$3.1 million is \$8.6 million less than a year ago and it is at its lowest level since 1993. The number of sewer and water customers both increased in June by 471.

Passenger traffic at Tulsa International Airport (TIA) was 273,477 in the month of June which is about 1,100 more than the June 2009 total of 274,588. Barge tonnage at the Port of Catoosa totaled 114,047 tons in June. The 12 month moving average decreased slightly to 166,780 tons from 168,625 a month ago.

The June Consumer Price Index (CPI-U) decreased to 217.2. The Producer Price Index (PPI) decreased to 178.3 from 178.8 last month. The Municipal Cost Index (MCI) for June is 211.6, an increase from 210.5 last month. In June, interest rates on 30-Day Treasury Bills were decreased to 0.08% and rates on 20 year General Obligation Bonds were up slightly to 4.36%. Revenue Bonds decreased three basis points to 4.84%.

Local indicators continue to reflect the impact of the national recession. Recently, there has been a leveling out of the national economic indicators and slight improvement in key local indicators, such as Wage and Salary Employment and Airport passenger traffic which may signal that the local economy has bottomed. Additionally, there has been some gain in sales tax collections as August collections showed an increase over last August. Near term risks to the national and local economies still exist and are factors which could negate recent improvements. Poor year to date airport passenger traffic and freight are fair indicators of the negative effects of the world economic recession on the TMSA. In addition, significant declines in building permits from last year have negatively impacted the local economy. If the Tulsa MSA has reached a true bottom it may begin to realize some of the turnaround on the national level. However, it is still expected to be a slow, uneven recovery.

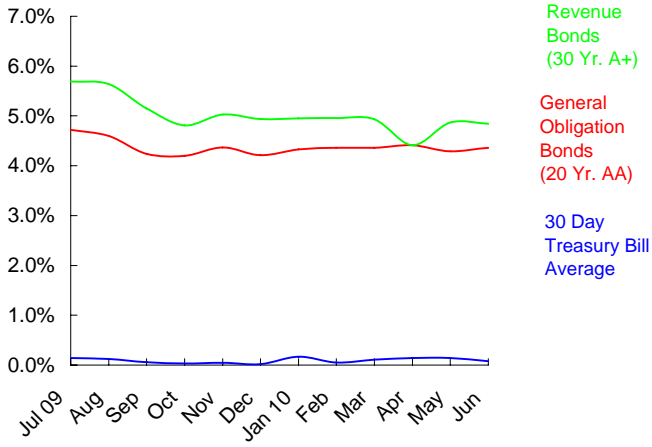
Tulsa Economic Indicators

Most Recent Twelve Months

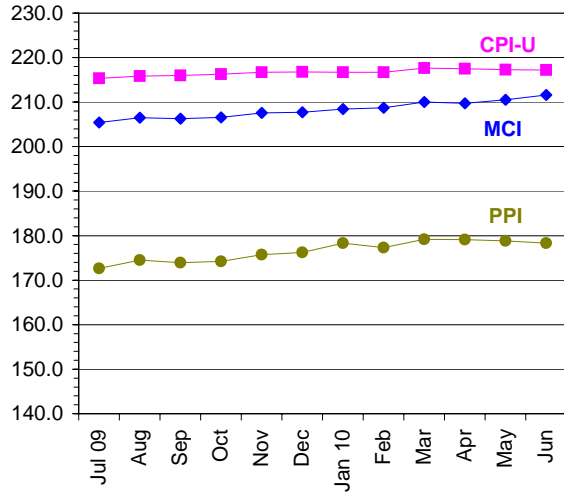
(unless otherwise Indicated)

	July 09 to June 10	July 08 to June 09	Change
Wage & Salary			
Employment (TMSA 12 Mo. Avg.):	<u>Jun-10</u>	<u>Jun-09</u>	
Manufacturing	45,200	50,900	(11.2%)
Services	202,200	207,100	(2.4%)
Trade	83,200	85,500	(2.7%)
Other	<u>84,100</u>	<u>86,900</u>	(3.2%)
Total	414,700	430,400	(3.6%)
Unemployment Rates (TMSA 12 Mo. Avg.):			
	<u>Jun-10</u>	<u>Jun-09</u>	
Tulsa MSA	7.5%	5.2%	2.3
Oklahoma	6.8%	5.1%	1.7
United States	9.8%	7.7%	2.1
Tulsa City Construction (Calendar YTD):			
	<u>Jun-10</u>	<u>Jun-09</u>	
Single Family Units	210	210	0.0%
Multi-Family Units	2	304	(99.3%)
Value of :			
Retail Permits	\$6,940,000	\$27,280,000	(74.6%)
Office Permits	\$9,470,000	\$24,470,000	(61.3%)
Industrial Permits	\$5,940,001	\$12,060,000	(50.7%)
Air Passengers (Calendar YTD):			
	<u>Jun-10</u>	<u>Jun-09</u>	
	1,372,000	1,394,000	(1.6%)
Barge Tonnage (Calendar YTD):			
	<u>Jun-10</u>	<u>Jun-09</u>	
	1,043,700	1,100,500	(5.2%)
Price and Cost Indices:			
	<u>Jun-10</u>	<u>Jun-09</u>	
Consumer Price Index - Urban	217.2	215.7	0.7%
Producer Price Index	178.3	174.1	2.4%
Municipal Cost Index (Est.)	211.6	206.3	2.6%
(Indices are not adjusted for seasonality)			
Financial Rates (Monthly Avg.):			
	<u>Jun-10</u>	<u>Jun-09</u>	
30-Day Treasury Bill	0.08%	0.09%	(0.01)
Municipal General Obligation Bond			
Buyer 11 Bond Index (20 Yr. A-AAA)	4.36%	4.81%	(0.45)
Municipal Revenue Bond Buyer			
25 Bond Index (25 Yr. A-AA+)	4.84%	5.74%	(0.90)
Utilities:			
	<u>Jun-10</u>	<u>Jun-09</u>	
Water Customers	137,300	137,200	0.1%
Sewer Customers	128,800	128,300	0.4%

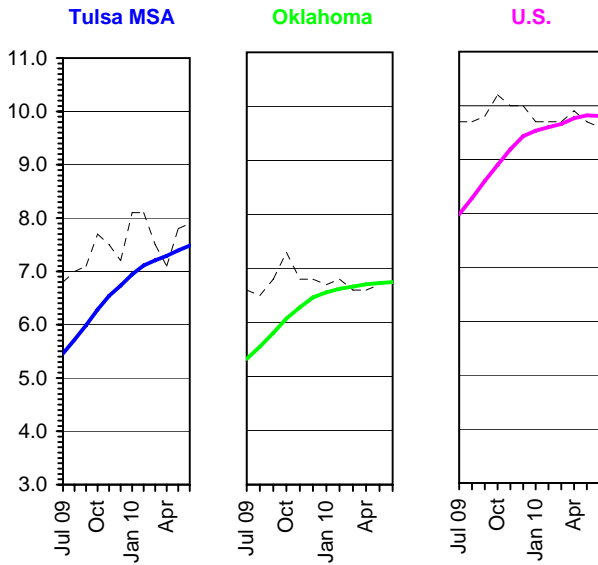
Rates on Municipal Investments and Cost of Financing



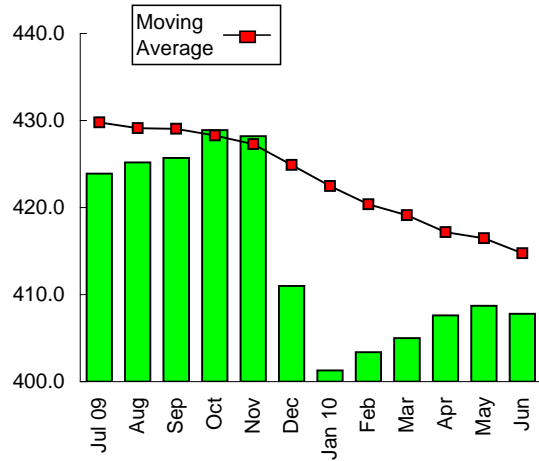
Consumers, Producers, and Municipal Price/Cost Indices



Monthly (- -) and Average (—) Unemployment Rates (Most Recent 12 Months)

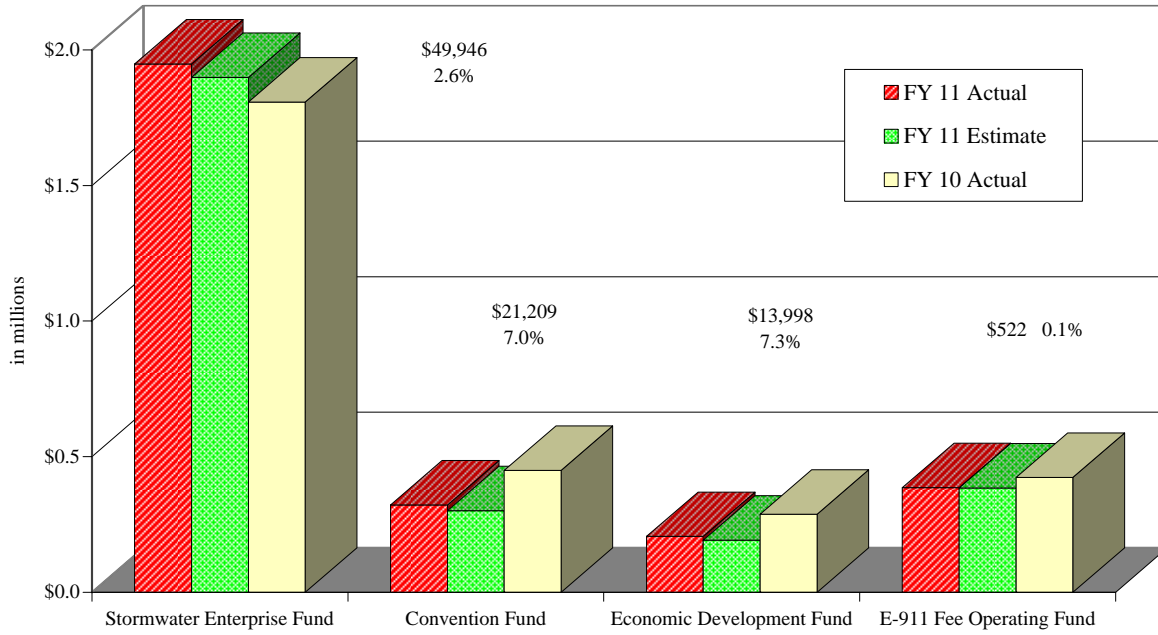
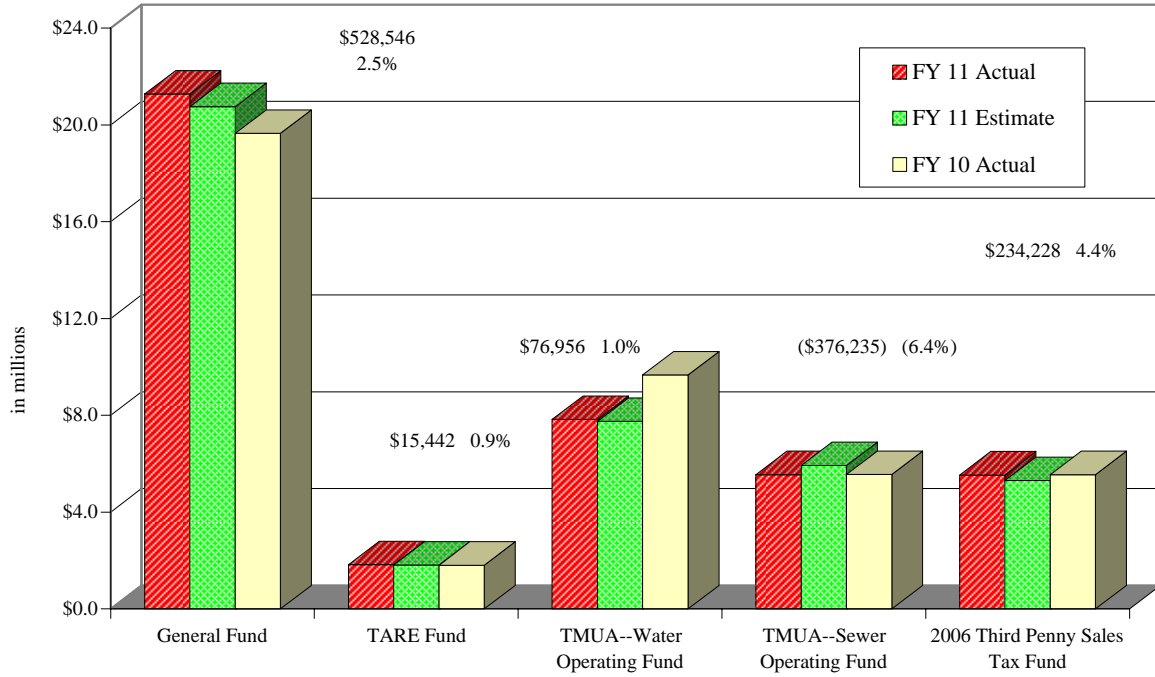


Tulsa MSA Wage & Salary Employment and 12 Month Moving Average (000's)



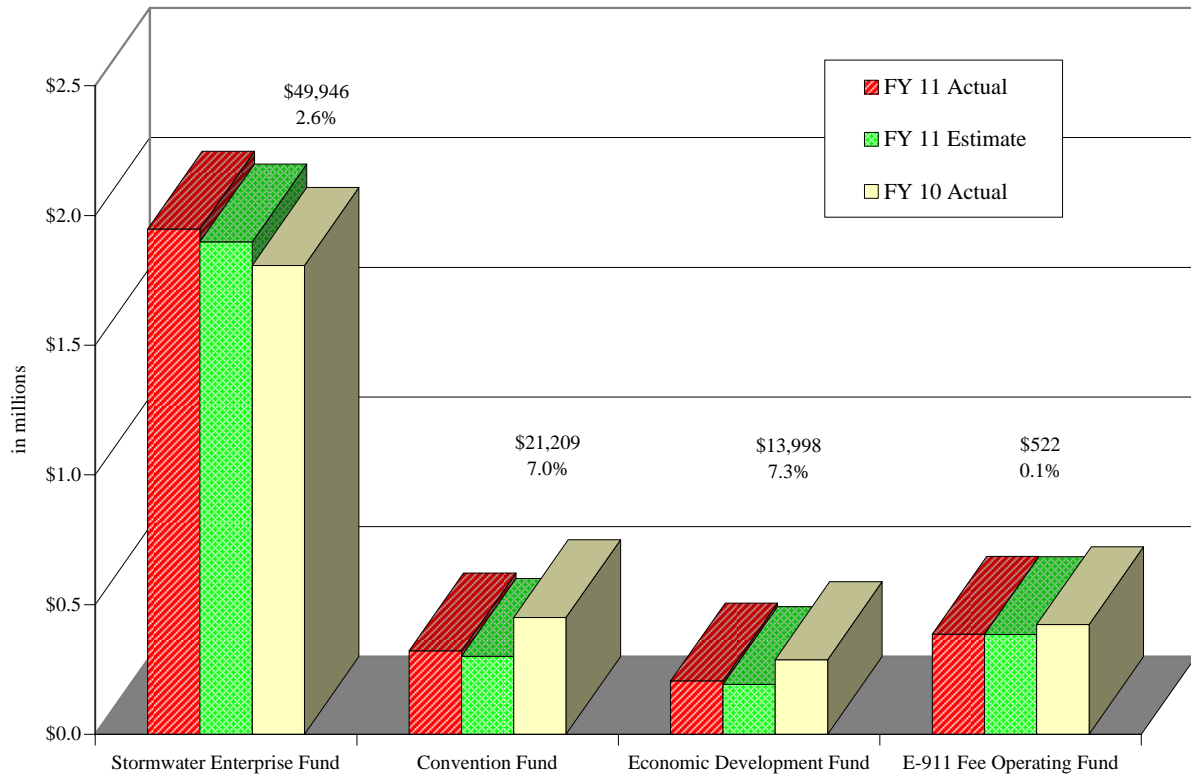
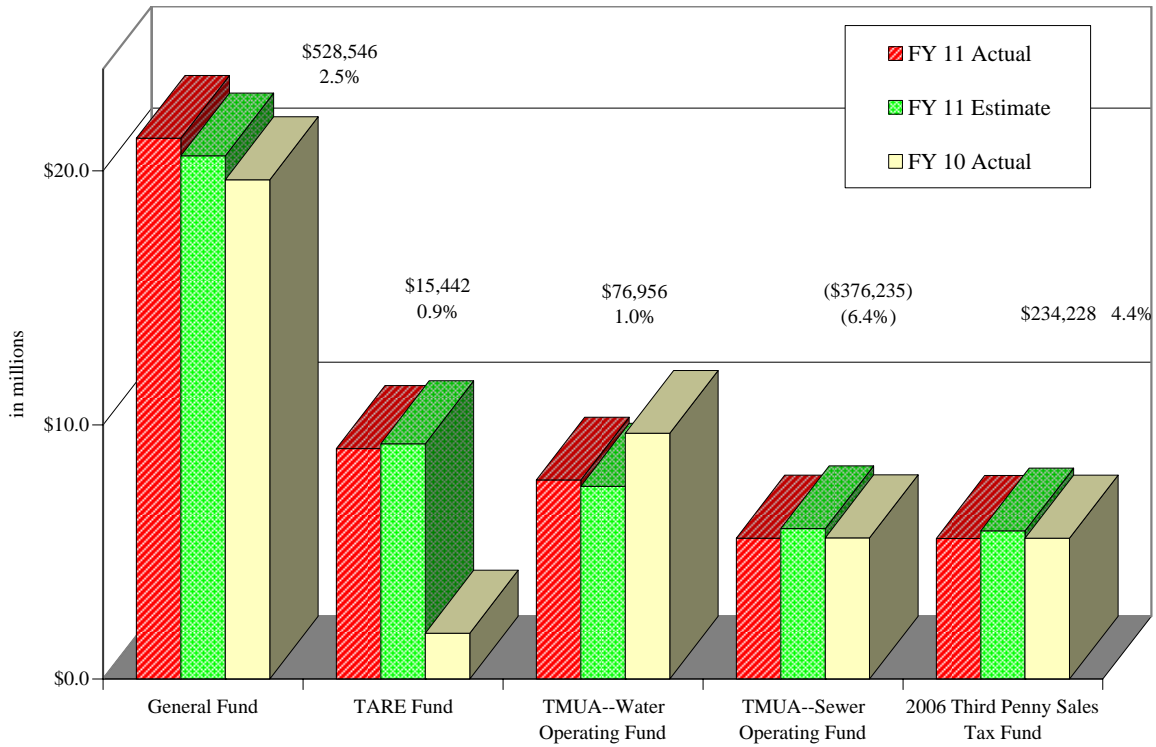
Estimate/Actual Monthly Revenue

Through July 31, 2010



Estimate/Actual Year-to-Date Revenue

Through July 31, 2010



CITY OF TULSA
Through July 31, 2010

Fund		Actual	Estimate	Variation from Estimate	Percent Variation
General	Month -	\$21,281,879	\$20,753,333	\$528,546	2.5%
	YTD -	\$21,281,879	\$20,753,333	\$528,546	2.5%

The General Fund revenue is 3.4% above the original budget estimate for July and year-to-date. However, \$579,000 was received from the County a month earlier than the estimated August date. When that fact is considered, actual and estimated revenues are very nearly equal.

A. Sales Tax	Month -	\$10,833,143	\$10,325,000	\$508,143	4.9%
	YTD -	\$10,833,143	\$10,325,000	\$508,143	4.9%

Sales Tax collections are 4.9% above the original budget estimate for July and year-to-date. July's collections are .03 % less than last year's comparable amount.

B. Use Tax	Month -	\$1,400,963	\$1,433,000	(\$32,037)	(2.2%)
	YTD -	\$1,400,963	\$1,433,000	(\$32,037)	(2.2%)

Use Tax collections for the month and year-to-date are 2.2% below projections.

C. Franchise Taxes	Month -	\$1,920,964	\$1,809,000	\$111,964	6.2%
	YTD -	\$1,920,964	\$1,809,000	\$111,964	6.2%

The franchise taxes for July and year-to-date are 6.2% above the original budget. PSO and cable television revenues were greater than forecast.

E-911 Fee Operating Fund	Month -	\$385,522	\$385,000	\$522	0.1%
	YTD -	\$385,522	\$385,000	\$522	0.1%

July and year-to-date revenue in the E-911 Fee Operating Fund are virtually the same as the estimate.

Economic Development	Month -	\$205,998	\$192,000	\$13,998	7.3%
	YTD -	\$205,998	\$192,000	\$13,998	7.3%

The Economic Development Commission Fund monthly and year-to-date revenues are 7.3% above the estimate. Hotel / motel bookings have improved.

CITY OF TULSA
Through July 31, 2010

Fund		Actual	Estimate	Variation from Estimate	Percent Variation
Convention	Month -	\$322,209	\$301,000	\$21,209	7.0%
	YTD -	\$322,209	\$301,000	\$21,209	7.0%

The Convention Fund had a 7.0% positive variance for the month of July and year-to-date. Comment above applies.

Tulsa Authority for the Recovery of Energy	Month -	\$1,824,609	\$1,809,167	\$15,442	0.9%
	YTD -	\$1,824,609	\$1,809,167	\$15,442	0.9%

July and year to date revenue in the TARE Fund are 0.9% above estimate. Commercial refuse service and utility late fees provided the positive variance.

Stormwater	Month -	\$1,947,946	\$1,898,000	\$49,946	2.6%
	YTD -	\$1,947,946	\$1,898,000	\$49,946	2.6%

Stormwater Management Fund revenue for July and year to date revenue are 2.6% above projections. Utilities late fees, donations, and other miscellaneous revenue are responsible for the positive variance.

Water	Month -	\$7,827,956	\$7,751,000	\$76,956	1.0%
	YTD -	\$7,827,956	\$7,751,000	\$76,956	1.0%

The Water Fund's revenue is 1.0% above the monthly and year to date estimate as projected.

Sewer	Month -	\$5,544,765	\$5,921,000	(\$376,235)	(6.4%)
	YTD -	\$5,544,765	\$5,921,000	(\$376,235)	(6.4%)

The TMUA Sewer Operating Fund revenue has a 6.4% negative variance for July and year-to-date. Sewer service revenues and RMUA receipts not received within the month are the difference.

2006 Sales Tax	Month -	\$5,534,228	\$5,300,000	\$234,228	4.4%
	YTD -	\$5,534,228	\$5,300,000	\$234,228	4.4%

The 2006 Third Penny Sales Tax Program revenue is 4.4% above the original monthly and year to date estimate. Sales Tax collection comments apply. Interest income is included in these amounts.

**MAJOR FUNDS
EXPENDITURES, ENCUMBRANCES, TRANSFERS OUT & COMMITMENTS
THROUGH JULY 31, 2010**

	Current Appropriations	Expenditures/ Encumbrances/ Commitments	Percent YTD Expend./Encumb./Commit.			Budget Balance
			Estimate *	FY-11 Actual	FY-10 Actual	
GENERAL FUND						
Personal Services	\$ 175,614,000	\$ 13,563,000	8.3	7.7	8.4	\$ 162,051,000
Materials & Supplies	8,487,000	2,463,000	30.1	29.0	32.8	6,024,000
Other Services	55,205,000	9,462,000	15.6	17.1	21.5	45,743,000
TOTAL	\$ 239,306,000	\$ 25,488,000	10.8	10.7	12.1	\$ 213,818,000
E-911 FEE--OPERATING FUND						
TOTAL	\$ 4,986,000	\$ 561,000	10.0	11.3	10.2	\$ 4,425,000
ECONOMIC DEVELOPMENT COMMISSION FUND						
TOTAL	\$ 2,374,000	\$ 170,000	22.3	7.2	0.8	\$ 2,204,000
CONVENTION FUND						
TOTAL	\$ 5,060,000	\$ 468,000	11.4	9.2	10.1	\$ 4,592,000
TARE OPERATING FUND						
Personal Services	\$ 3,586,000	\$ 215,000	8.3	6.0	6.6	\$ 3,371,000
Materials & Supplies	569,000	153,000	31.3	26.9	21.8	416,000
Other Services	18,831,000	2,873,000	11.7	15.3	27.9	15,958,000
Capital Outlay	2,771,000	214,000	15.4	7.7	36.0	2,557,000
TOTAL	\$ 25,757,000	\$ 3,455,000	12.0	13.4	25.4	\$ 22,302,000
AIRPORT OPERATIONS FUND						
Personal Services	\$ 8,605,000	\$ 624,000	8.3	7.3	6.6	\$ 7,981,000
Materials & Supplies	1,222,000	278,000	22.4	22.7	16.8	944,000
Other Services	5,199,000	575,000	10.3	11.1	7.8	4,624,000
Capital Outlay	44,000	44,000	100.0	100.0	2.5	0
TOTAL	\$ 15,070,000	\$ 1,521,000	10.4	10.1	7.7	\$ 13,549,000

* Based on prior year encumbrances and level expenditures of departmental budgets.

**MAJOR FUNDS
EXPENDITURES, ENCUMBRANCES, TRANSFERS OUT & COMMITMENTS
THROUGH JULY 31, 2010**

	Current Appropriations	Expenditures/ Encumbrances/ Commitments	Percent YTD Expend./Encumb./Commit.			Budget Balance
			Estimate *	FY-11 Actual	FY-10 Actual	
STORMWATER ENTERPRISE FUND						
Personal Services	\$ 8,904,000	\$ 565,000	8.3	6.3	6.7	\$ 8,339,000
Materials & Supplies	1,164,000	466,000	28.5	40.0	42.7	698,000
Other Services	14,612,000	4,618,000	23.0	31.6	44.6	9,994,000
Capital Outlay	2,220,000	537,000	28.0	24.2	44.3	1,683,000
TOTAL	\$ 26,900,000	\$ 6,186,000	18.8	23.0	31.3	\$ 20,714,000
TMUA--WATER OPERATING FUND						
Personal Services	\$ 25,004,000	\$ 1,565,000	8.3	6.3	6.4	\$ 23,439,000
Materials & Supplies	10,455,000	3,865,000	27.8	37.0	37.2	6,590,000
Other Services	31,911,000	4,173,000	13.4	13.1	11.3	27,738,000
Capital Outlay	9,293,000	2,557,000	28.2	27.5	46.4	6,736,000
Debt Service	13,800,000	943,000	8.3	6.8	4.8	12,857,000
TOTAL	\$ 90,463,000	\$ 13,103,000	14.4	14.5	14.8	\$ 77,360,000
TMUA--SEWER OPERATING FUND						
Personal Services	\$ 18,866,000	\$ 1,203,000	8.3	6.4	6.6	\$ 17,663,000
Materials & Supplies	4,922,000	1,779,000	26.2	36.1	39.7	3,143,000
Other Services	32,204,000	6,399,000	19.7	19.9	21.3	25,805,000
Capital Outlay	9,854,000	3,200,000	32.0	32.5	36.7	6,654,000
Debt Service	11,400,000	678,000	8.3	5.9	2.3	10,722,000
TOTAL	\$ 77,246,000	\$ 13,259,000	17.2	17.2	17.7	\$ 63,987,000
GOLF COURSE FUND						
Other Services	\$ 3,802,000	\$ 52,000	8.3	1.4	6.5	\$ 3,750,000
Capital Outlay	226,000	25,000	18.5	11.1	44.1	201,000
TOTAL	\$ 4,028,000	\$ 77,000	8.9	1.9	14.1	\$ 3,951,000

* Based on prior year encumbrances and level expenditures of departmental budgets.

**MAJOR FUNDS
EXPENDITURES, ENCUMBRANCES, TRANSFERS OUT & COMMITMENTS
THROUGH JULY 31, 2010**

CURRENT APPROPRIATIONS

The current appropriations reflect the FY 10/11 original budget, prior year encumbrances, transfers, and budget amendments.

In the General Fund, (Fund 1080) the Mayor and the Council approved a Council Transfer that moved appropriations of \$67,381 from the Fire Department to the Transfer Department to establish a 20% grant match. The match was required by the Department of Homeland Security/Federal Emergency Management Agency (FEMA) Assistance to Firefighters equipment grant.

In the Economic Development Commission Fund, (Fund 2710) a budget amendment was approved that increased appropriations by \$100,000 from fund balance to Other Services.

BUDGET BALANCE

Materials and Supplies, Other Services, and Capital Outlay accounts reflect encumbrances carried forward from FY 10. Funds for these purchases, which were outstanding at year-end, were brought forward as appropriations in the new fiscal year. As the year transpires, the effect of these carry-overs will diminish. In the early part of the fiscal year, however, expenditures as a percentage of the current budget are expected to be higher than average. Many annual contracts are encumbered at the beginning of the fiscal year, which also results in obligations exceeding the uniform spending level estimate. This is specifically true in the case of TARE Fund (Fund 3623) for the landfill contract encumbrance and in Stormwater Fund (Fund 7010) for the mowing, street sweeping, spraying and drainage maintenance contracts.

Economic Development Commission Fund expenditures are below estimate because the Chamber of Commerce's annual contract was not encumbered in July. Payments later in the year will balance this low expenditure level.

**Status Report on Capital Improvement Funds
As of July 31, 2010**

2006 Special Extended Sales Tax

July expenditures totaled \$3.3 million with \$648,500 of that spent on the 91st and Sheridan widening project. Encumbrances and commitments total \$20.5 million. Appropriations to date total \$328.0 million and there is a current appropriation balance of \$113.8 million.

2001 Third Penny Sales Tax and 2006 Advanced Funded Sales Tax

These two programs contain funding for the projects in the original 2001 Sales Tax Ordinance.

July expenditures totaled \$518,400. The following are the projects with the highest expenditures:

Lewis Ave. – 61 st to 75th	\$272,000
Arterial Street Rehab	\$163,700

To date, \$359.1 million has been spent on projects in these funds and another \$10.2 million is currently under contract. Appropriations to date total \$387.5 million with a balance of \$18.2 million.

2008 General Obligation Bonds

There has been \$81.1 million appropriated for the Fix the Streets package. To date, \$7.0 million has been spent and \$8.5 million encumbered and committed. There is a balance of \$65.6 million.

2005 General Obligation Bonds

Expenditures in July totaled \$3.3 million and of that amount \$567,000 was spent on the replacement of Bridge 282, located over BNSF Railroad at 2700 West 41st Street. Life to date expenditures total \$197.8 million and encumbrances and commitments total \$26.9 million. Appropriations to date are \$262.7 million.

TMUA Water Capital Funds

Expenditures in July totaled \$3.5 million. Of that amount, \$461,000 was spent on citywide replacement of water lines. To date \$312.9 million has been spent in these funds. Appropriations to date total \$351.9 million. There is a \$25.4 million appropriation balance remaining to be spent on approved projects.

TMUA Sewer Capital Funds

July expenditures in these funds totaled \$1.3 million with \$819,500 being spent on the Southside Treatment Plant Odor Control System project. Encumbrances and commitments total \$9.3 million. There is a \$35.4 million appropriation balance in all the TMUA sewer capital funds.

* Funds 6007 (1996 Sales Tax) and Funds 6311-6312 (1999 General Obligation Bonds) are now substantially complete and have been removed from the report.

MAJOR CAPITAL IMPROVEMENTS CONSTRUCTION FUNDS SUMMARY
As of July 31, 2010

	To-Date Appropriations	Expenditures		Encumb./ Committ.	Pct. Expend. Comm./Enc.	Balance
		Current Mo.	To-Date			
Fund 6009 2006 Special Extended Sales Tax Fund	\$328,044,000	\$3,250,619	\$193,779,235	\$20,459,598	65%	\$113,805,168
Fund 6008 and Fund 6010 2001 Third Penny Sales Tax and 2006 Advance Funded Sales Tax	\$387,468,712	\$518,360	\$359,659,905	\$9,698,591	95%	\$18,110,215
Fund 6321-6322 2008 General Obligation Bonds	\$81,101,000	\$459,178	\$7,000,044	\$8,451,287	19%	\$65,649,670
Fund 6315-6319 2005 General Obligation Bonds	\$262,699,000	\$3,276,237	\$197,761,587	\$26,939,082	86%	\$37,998,331
Fund 6021, 6023 - 6028 TMUA--Water Capital Fund	\$351,890,798	\$3,516,075	\$312,896,350	\$13,634,513	93%	\$25,359,935
Funds 6031 - 6039, 6050 - 6055 TMUA--Sanitary Sewer Capital Funds	\$284,055,844	\$1,270,576	\$239,360,380	\$9,272,233	88%	\$35,423,231

* Funds 6007 (1996 Sales Tax) and Funds 6311-6312 (1999 General Obligation Bonds) are now substantially complete and have been removed from the report.

**CITY OF TULSA
GENERAL FUND
BALANCE SHEET (Budgetary Basis)
July 31, 2010 and 2009**

	<u>FY 2010-2011</u>	<u>FY 2009-2010</u>
ASSETS		
Cash and cash equivalents	\$ 30,815,979	\$ 24,651,714
Due from other funds	<u>150,036</u>	<u>138,438</u>
Total assets	<u>\$ 30,966,015</u>	<u>\$ 24,790,152</u>
LIABILITIES AND FUND BALANCE		
Liabilities:		
Due to other funds	\$ 3,634,428	\$ 3,324,650
Reserve for encumbrances	<u>7,387,643</u>	<u>9,449,172</u>
	<u>11,022,071</u>	<u>12,773,822</u>
Fund Balance:		
Reserved		
Reserve for imprest cash	115,115	115,315
Reserve for arbitrage	64,163	351,250
Reserve for MTTA	200,862	200,862
Reserve for body armor	403,120	543,120
Reserve for HUD refund	91,000	96,811
Unreserved		
Designated for operations	13,974,000	13,803,000
Undesignated	<u>5,095,684</u>	<u>(3,094,028)</u>
Total fund balance	<u>19,943,944</u>	<u>12,016,330</u>
Total liabilities and fund balance	<u>\$ 30,966,015</u>	<u>\$ 24,790,152</u>

**CITY OF TULSA
GENERAL FUND
STATEMENTS OF REVENUES, EXPENDITURES, ENCUMBRANCES AND
CHANGES IN FUND BALANCE (BUDGETARY BASIS)
MONTH ENDED JULY 31 2010 AND 2009
(8.33% OF THE FISCAL YEAR)**

REVENUES	FY 2010-2011 Year To Date	FY 2009-2010 Year To Date	Percent Change Between Years	FY 2010-2011 Original Budget and Revisions	Percent of Budget
Taxes	\$ 14,757,659	\$ 14,181,656	4.06	\$ 163,514,000	9.03
Licenses & permits	524,394	473,711	10.70	5,059,000	10.37
Intergovernmental revenue	1,602,718	863,277	85.66	8,686,000	18.45
Charges for services	3,500,728	2,297,161	52.39	5,679,000	61.64
Fines & forfeitures	620,820	725,289	(14.40)	8,076,000	7.69
Investment income	465,579	316,093	47.29	5,231,000	8.90
Transfers in	466,667	166,667	180.00	2,375,000	19.65
Miscellaneous	269,428	113,375	137.64	31,404,000	0.86
Total revenue	<u>22,207,993</u>	<u>19,137,229</u>	16.05	<u>230,024,000</u>	9.65
EXPENDITURES & ENCUMBRANCES					
Personal services	13,563,144	15,831,470	(14.33)	175,614,000	7.72
Materials and supplies	432,715	890,985	(51.43)	6,568,979	6.59
Other services					
General	1,562,300	2,089,528	(25.23)	29,689,340	5.26
Internal billings	1,723,314	1,872,685	(7.98)	8,459,082	20.37
Intergovernmental transfers	243,500	403,250	(39.62)	1,526,000	15.96
Transfers	1,647,587	1,576,003	4.54	11,687,381	14.10
Total expenditures and encumbrances	<u>19,172,560</u>	<u>22,663,921</u>	(15.40)	<u>233,544,782</u>	8.21
Excess (deficiency) of revenue over expenditures and encumbrances	<u>3,035,433</u>	<u>(3,526,692)</u>		<u>\$ (3,520,782)</u>	
Beginning fund balance, budgetary basis	16,493,786	15,144,821			
Prior period adjustments	414,725	398,201			
Ending fund balance, budgetary basis	<u>\$ 19,943,944</u>	<u>\$ 12,016,330</u>			

**GENERAL FUND
YEAR TO DATE EXPENDITURES, ENCUMBRANCES, AND COMMITMENTS
THROUGH JULY 31, 2010**

General Fund expenditures and encumbrances for the month ending July 31, 2010 exceeded \$24 million. This represents 10.7% of the \$239.3 million in appropriations.

Historically, encumbrances made in July include annual contracts that elevate spending levels. Immediate spending of the prior year's carryover also contributes to higher spending early in the fiscal year. Transfers to Other Funds is elevated because of the timing of quarterly transfers.

In the General Fund, (Fund 1080) the Mayor and the Council approved a Council Transfer that moved appropriations of \$67,381 from the Fire Department to the Transfer Department to establish a 20% grant match. The match was required by the Department of Homeland Security/Federal Emergency Management Agency (FEMA) Assistance to Firefighters equipment grant.

Actual expenditures and encumbrances for the first month of the current fiscal year are \$4.9 million less than those for last fiscal year's comparable period. July reporting may be affected by final audit adjustments for the fiscal year ended June 30, 2010 and these figures are subject to revision. Pending adjustments to prior year's carryover encumbrances may change related appropriations. Final audited expenditures for FY 2010 will be published in the annual financial report.

**GENERAL FUND
YEAR TO DATE EXPENDITURES, ENCUMBRANCES AND COMMITMENTS
THROUGH JULY 31, 2010**

	Current Appropriations	Expenditures/ Encumbrances	%		Commitments	Budget Balance
			Estimate *	Actual		
DEPARTMENT						
MUNICIPAL COURT	\$ 2,659,000	\$ 267,000	8.8	10.3	\$ 6,000	\$ 2,386,000
POLICE	75,090,000	6,625,000	9.1	8.8	0	68,465,000
FIRE	57,124,000	5,559,000	9.7	9.7	0	51,565,000
INFORMATION TECHNOLOGY	17,579,000	2,546,000	15.1	16.4	337,000	14,696,000
PARK & RECREATION	9,193,000	857,000	11.0	9.4	10,000	8,326,000
GILCREASE MUSEUM	2,745,000	3,000	8.4	0.1	0	2,742,000
PERFORMING ARTS	2,535,000	412,000	18.3	16.3	0	2,123,000
ECON DEVELOPMENT & REAL E	730,000	79,000	10.6	10.8	0	651,000
WORKING IN NEIGHBORHOODS	4,270,000	478,000	13.6	11.2	0	3,792,000
DEVELOPMENT SERVICES	3,198,000	236,000	8.8	7.4	0	2,962,000
PLANNING	846,000	114,000	13.9	13.5	0	732,000
PUBLIC WORKS	28,271,000	3,354,000	12.9	12.3	132,000	24,785,000
HUMAN RIGHTS	512,000	54,000	10.8	10.5	0	458,000
LEGAL DEPARTMENT	2,853,000	274,000	10.9	12.0	68,000	2,511,000
HUMAN RESOURCES	3,970,000	619,000	18.1	15.6	0	3,351,000
ELECTED & ADMINISTRATION	3,127,000	238,000	8.3	7.6	0	2,889,000
GENERAL GOVERNMENT	2,568,000	431,000	23.7	16.8	0	2,137,000
FINANCE	7,955,000	836,000	12.8	10.5	0	7,119,000
COMMUNICATIONS	780,000	61,000	8.3	7.8	0	719,000
GRANTS ADMINISTRATION	103,000	1,000	8.3	1.0	0	102,000
TRANSFERS TO OTHER FUNDS	5,912,000	685,000	8.3	11.6	0	5,227,000
GRANTS TO AGENCIES	7,286,000	1,206,000	8.3	16.6	0	6,080,000
TOTAL GENERAL FUND	\$ 239,306,000	\$ 24,935,000	10.8	10.7	\$ 553,000	\$ 213,818,000

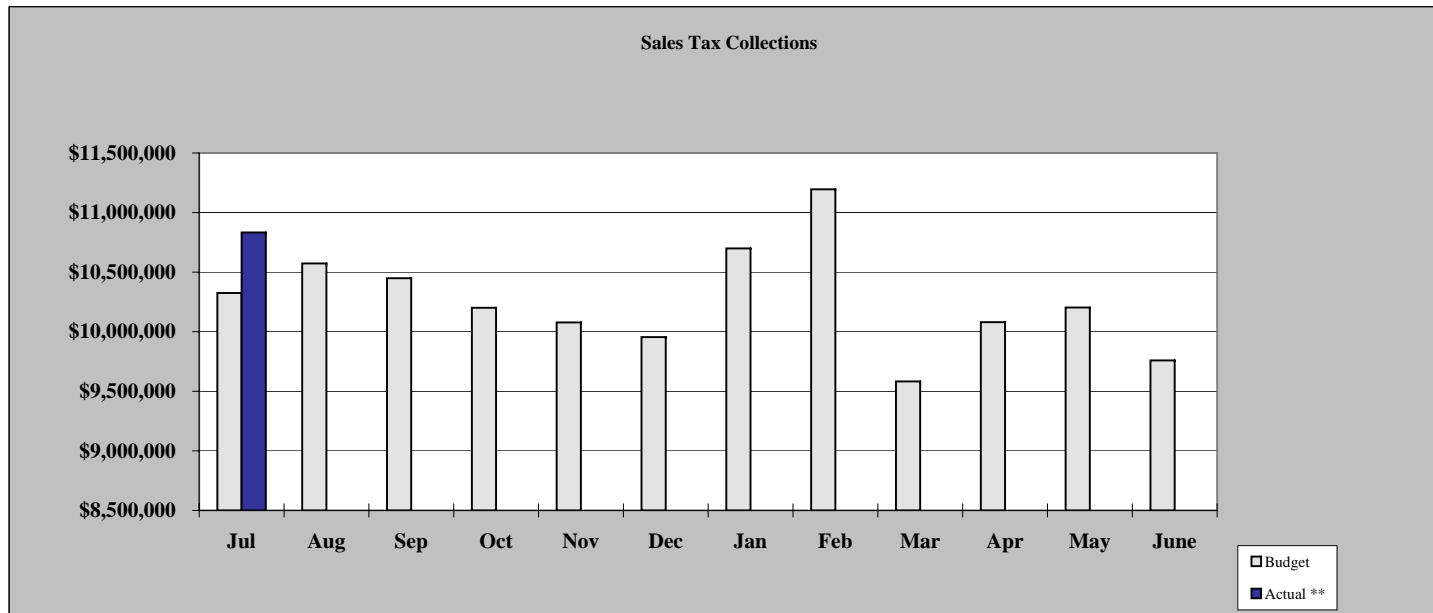
* Estimate shows what the percentage would be if prior year carryover encumbrances and the current year's departmental budgets were spent on a uniform monthly basis.

Schedule of Sales Tax Revenue

General Fund Only

	Comparison to Budget (2010-2011)			Comparison to Prior Year			Percent +/- vs. FY '09-'10 Actuals	
	Budget	Actual **	Difference	Actual		Increase Decrease	Actual	Budgeted
				2009-2010	2010-2011			
Jul	\$10,325,000	\$10,833,143	\$508,143	\$10,862,027	\$10,833,143	(\$28,884)	-0.27%	-4.94%
Aug	\$10,573,000		\$0	\$11,166,095	\$0	\$0	0.00%	-5.31%
Sep	\$10,449,000		\$0	\$11,027,414	\$0	\$0	0.00%	-5.25%
Oct	\$10,201,000		\$0	\$10,734,142	\$0	\$0	0.00%	-4.97%
Nov	\$10,078,000		\$0	\$10,030,064	\$0	\$0	0.00%	0.48%
Dec	\$9,955,000		\$0	\$10,462,650	\$0	\$0	0.00%	-4.85%
Jan	\$10,699,000		\$0	\$11,252,287	\$0	\$0	0.00%	-4.92%
Feb	\$11,195,000		\$0	\$11,781,423	\$0	\$0	0.00%	-4.98%
Mar	\$9,583,000		\$0	\$9,877,186	\$0	\$0	0.00%	-2.98%
Apr	\$10,080,000		\$0	\$10,254,421	\$0	\$0	0.00%	-1.70%
May	\$10,203,000		\$0	\$11,055,230	\$0	\$0	0.00%	-7.71%
June	\$9,759,000		\$0	\$10,614,081	\$0	\$0	0.00%	-8.06%
Total	\$123,100,000	\$10,833,143	\$508,143	\$129,117,020	\$10,833,143	(\$28,884)	-0.27%	-4.94%

-19-

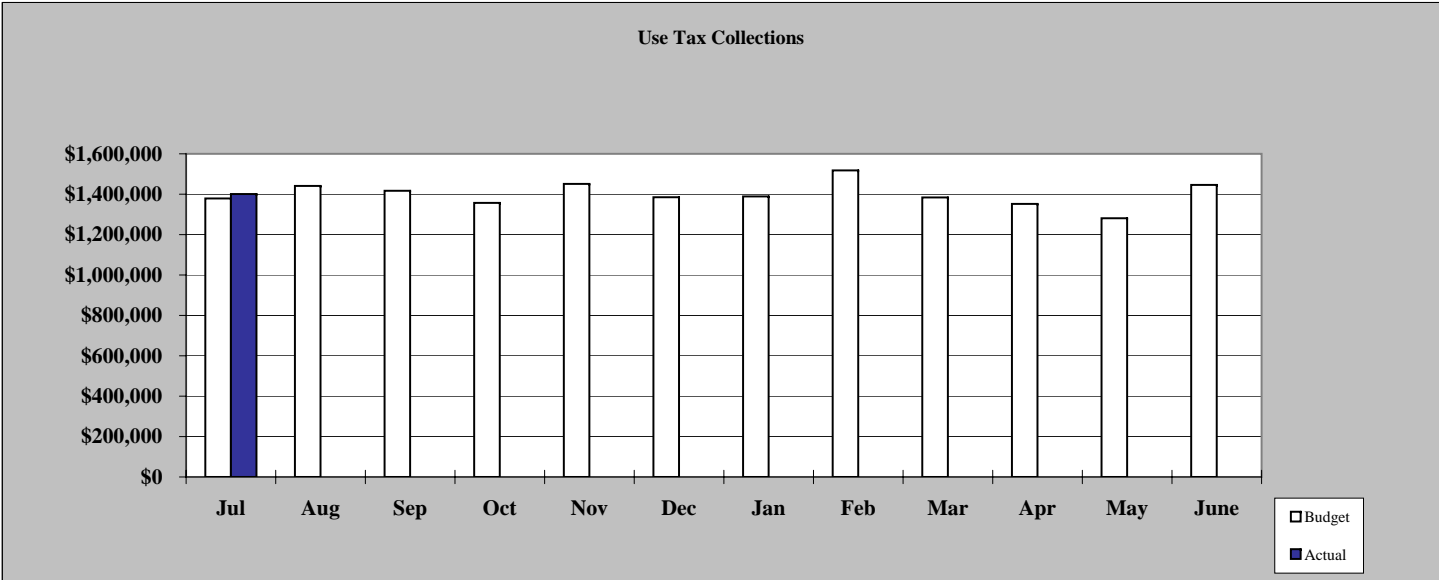


*Budgeted % Change Calculated on FYTD Basis.

Schedule of Use Tax Revenue

	Comparison to Budget (2010-2011)			Comparison to Prior Year			Percent +/- vs. FY '09-'10 Actuals	
	Budget	Actual	Difference	Actual		Increase	Actual	Budgeted
				2009-2010	2010-2011	Decrease		
Jul	\$1,379,000	\$1,400,983	\$21,983	\$1,429,799	\$1,400,983	(\$28,816)	-2.02%	-3.55%
Aug	\$1,441,000	\$0	\$0	\$1,639,887	\$0	\$0	0.00%	-12.13%
Sep	\$1,417,000	\$0	\$0	\$1,522,836	\$0	\$0	0.00%	-6.95%
Oct	\$1,357,000	\$0	\$0	\$1,105,924	\$0	\$0	0.00%	22.70%
Nov	\$1,451,000	\$0	\$0	\$1,339,307	\$0	\$0	0.00%	8.34%
Dec	\$1,385,000	\$0	\$0	\$1,166,220	\$0	\$0	0.00%	18.76%
Jan	\$1,389,000	\$0	\$0	\$1,345,904	\$0	\$0	0.00%	3.20%
Feb	\$1,518,000	\$0	\$0	\$1,598,877	\$0	\$0	0.00%	-5.06%
Mar	\$1,384,000	\$0	\$0	\$997,427	\$0	\$0	0.00%	38.76%
Apr	\$1,352,000	\$0	\$0	\$1,106,333	\$0	\$0	0.00%	22.21%
May	\$1,281,000	\$0	\$0	\$1,357,216	\$0	\$0	0.00%	-5.62%
June	\$1,446,000	\$0	\$0	\$1,224,083	\$0	\$0	0.00%	18.13%
Total	\$16,800,000	\$1,400,983	\$21,983	\$15,833,812	\$1,400,983	(\$28,816)	-2.02%	-3.55%

*



* Budgeted % Change Calculated on FYTD Basis.

Tulsa Metropolitan Utility Authority
Financial Management Report
Water Operating Fund (7020)
As of July 31, 2010

Budgetary Basis

Resources	Total Estimate	Year-to-Date Actual	YTD Estimate	Actual Percent of Budget
Appropriated Fund Balance	\$ 7,380,000	\$ 7,380,000	100.0%	100.0%
Revenues:				
Licenses/Permits	324,000	31,000	8.3%	9.6%
Charges for Services	78,700,000	7,405,000	9.4%	9.4%
Other Charges	2,643,000	333,000	8.3%	12.6%
Interest Income	1,072,000	51,000	8.3%	4.8%
Miscellaneous Revenue	344,000	8,000	4.4%	2.3%
Total Revenue	<u>83,083,000</u>	<u>7,828,000</u>	9.3%	9.4%
Total Resources	<u>\$ 90,463,000</u>	<u>\$ 15,208,000</u>	8.6%	16.8%

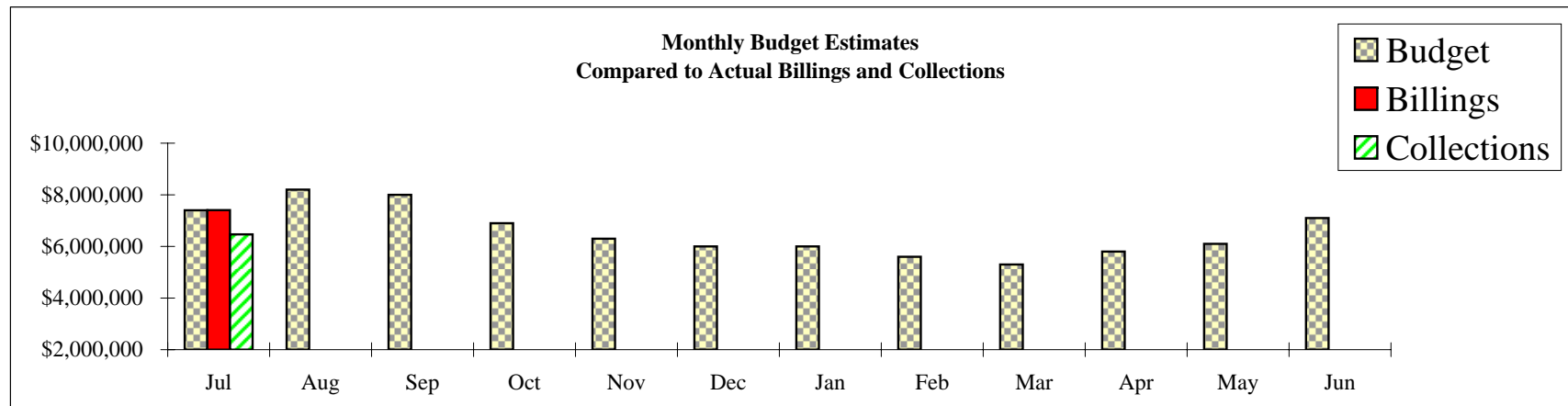
Appropriations/Commitments	Total Appropriation	Year-to-Date Actual Expenditures/ Encumbrances/ Commitments	YTD Estimate	Actual Percent of Budget	Budget Balance
Policy Development					
Materials and Supplies	6,000	-	8.3%	0.0%	6,000
Other Services and Charges	153,000	42,000	26.4%	27.5%	111,000
Capital Outlay	535,000	406,000	78.0%	75.9%	129,000
Engineering Services					
Personal Services	98,000	4,000	8.3%	4.1%	94,000
Materials and Supplies	14,000	-	0.0%	0.0%	14,000
Other Services and Charges	273,000	171,000	43.7%	62.6%	102,000
Capital Outlay	185,000	145,000	80.4%	78.4%	40,000
Environmental Operations					
Personal Services	13,766,000	803,000	8.3%	5.8%	12,963,000
Materials and Supplies	8,780,000	3,532,000	29.3%	40.2%	5,248,000
Other Services and Charges	27,462,000	2,648,000	12.1%	9.6%	24,814,000
Capital Outlay	8,211,000	2,005,000	24.7%	24.4%	6,206,000
Development Services					
Other Services and Charges	60,000	-	8.3%	0.0%	60,000
Distributed					
Cost Allocations					
Personal Services	11,042,000	750,000	8.3%	6.8%	10,292,000
Materials and Supplies	1,650,000	333,000	20.0%	20.2%	1,317,000
Other Services and Charges	2,872,000	1,230,000	24.6%	42.8%	1,642,000
IT - PW/Direct Charges					
Personal Services	99,000	8,000	8.3%	8.1%	91,000
Materials and Supplies	4,000	-	8.3%	0.0%	4,000
Other Services and Charges	91,000	-	8.3%	0.0%	91,000
Capital Outlay	362,000	-	8.3%	0.0%	362,000
Debt Service	13,800,000	943,000	8.3%	6.8%	12,857,000
Transfer/Projects	1,000,000	83,000	8.3%	8.3%	917,000
Total Appropriations/Commitments	<u>\$ 90,463,000</u>	<u>\$ 13,103,000</u>	14.4%	14.5%	<u>\$ 77,360,000</u>

Tulsa Metropolitan Utility Authority
Water Operating Fund (7020)
Schedule of Monthly Budgeted Revenue Estimates, Water Billings, and Collections
As of July 31, 2010
Budgetary Basis

Month	Budget	Actual Billings*	Actual % of Budget	Actual Collections**	% of Billings	Actual % of Budget
Jul	\$ 7,400,000	\$ 7,405,000	100%	\$ 6,467,000	87%	87%
Aug	8,200,000					
Sep	8,000,000					
Oct	6,900,000					
Nov	6,300,000					
Dec	6,000,000					
Jan	6,000,000					
Feb	5,600,000					
Mar	5,300,000					
Apr	5,800,000					
May	6,100,000					
Jun	7,100,000					
Total	\$ 78,700,000	\$ 7,405,000	9%	\$ 6,467,000	87%	8%

* Revenue estimates from City Departments are included in monthly budget estimates.

** Water accounts receivable were \$6,483,815 as of July 31, 2010 with \$5,232,933 (0 - 30 Days), \$743,581 (31 - 60 Days), \$171,650 (61 - 90 Days) and \$335,651 (Over 91 Days).



Tulsa Metropolitan Utility Authority
Water Operating Fund (7020)
Comparison of Monthly Budget Estimates, Water Billings, and Consumption to Prior Year
As of July 31, 2010
Budgetary Basis

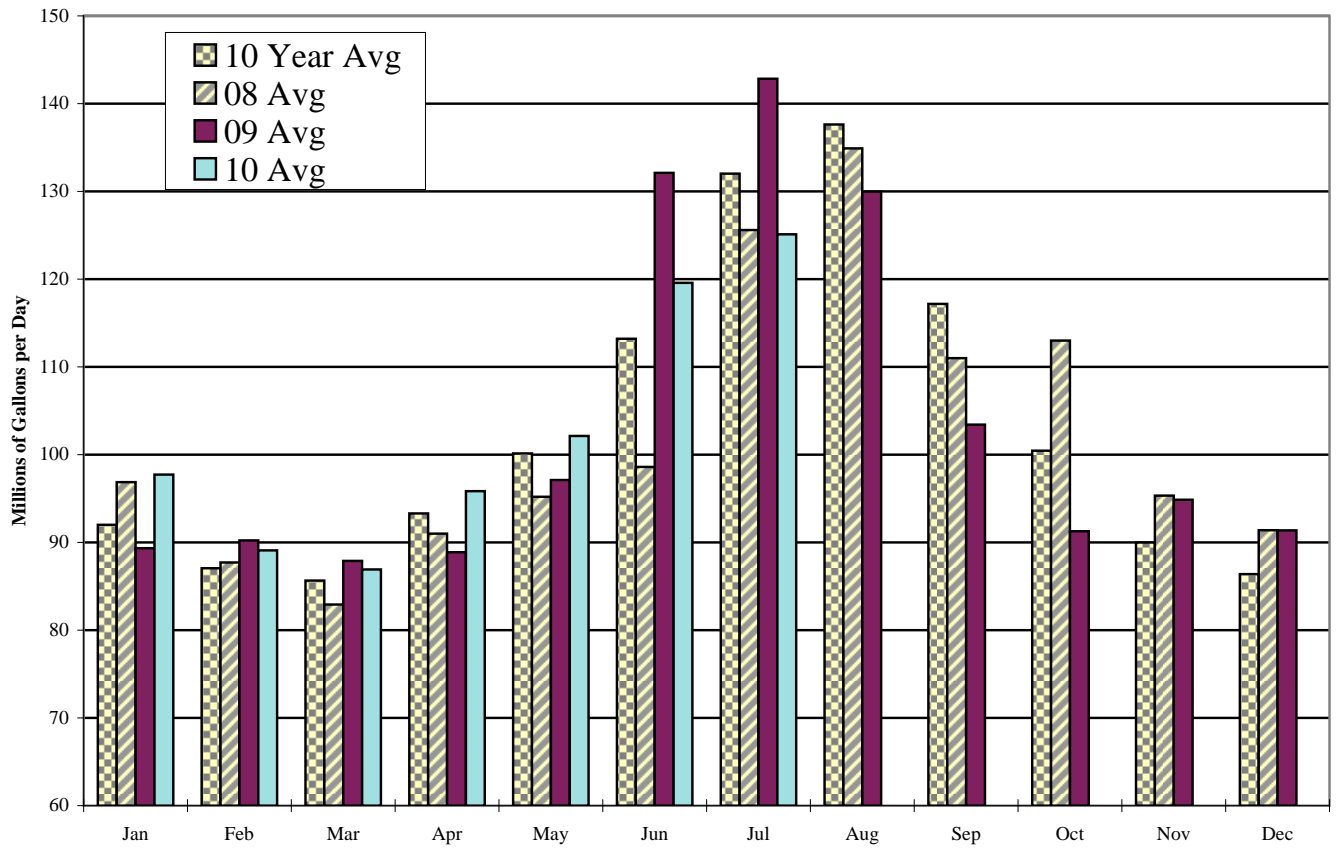
Month	Budget Estimate			Actual Billings			Billed Consumption (Billion Gallons)		
	FY09-10	FY10-11	Change	FY09-10	FY10-11	Change	FY09-10	FY10-11	Change
Jul	\$ 6,800,000	\$ 7,400,000	9%	\$ 8,950,000	\$ 7,405,000	-17%	4.1	3.3	-20%
Aug	8,300,000	8,200,000	-1%	8,389,000	-		3.9		
Sep	8,100,000	8,000,000	-1%	7,518,000	-		3.6		
Oct	7,400,000	6,900,000	-7%	5,646,000	-		2.6		
Nov	6,200,000	6,300,000	2%	5,056,000	-		2.2		
Dec	5,700,000	6,000,000	5%	5,181,000	-		2.3		
Jan	5,600,000	6,000,000	7%	5,800,000	-		2.6		
Feb	5,300,000	5,600,000	6%	5,010,000	-		2.2		
Mar	5,200,000	5,300,000	2%	4,649,000	-		2.1		
Apr	5,500,000	5,800,000	5%	5,474,000	-		2.5		
May	5,800,000	6,100,000	5%	5,922,000	-		2.7		
Jun	6,789,000	7,100,000	5%	6,485,000	-		2.9		
Total	\$ 76,689,000	\$ 78,700,000	3%	\$ 74,080,000	\$ 7,405,000	NA	33.5	3.3	NA

City of Tulsa Average Monthly Water Pumpage

As of July 31, 2010

(Millions of Gallons per Day)

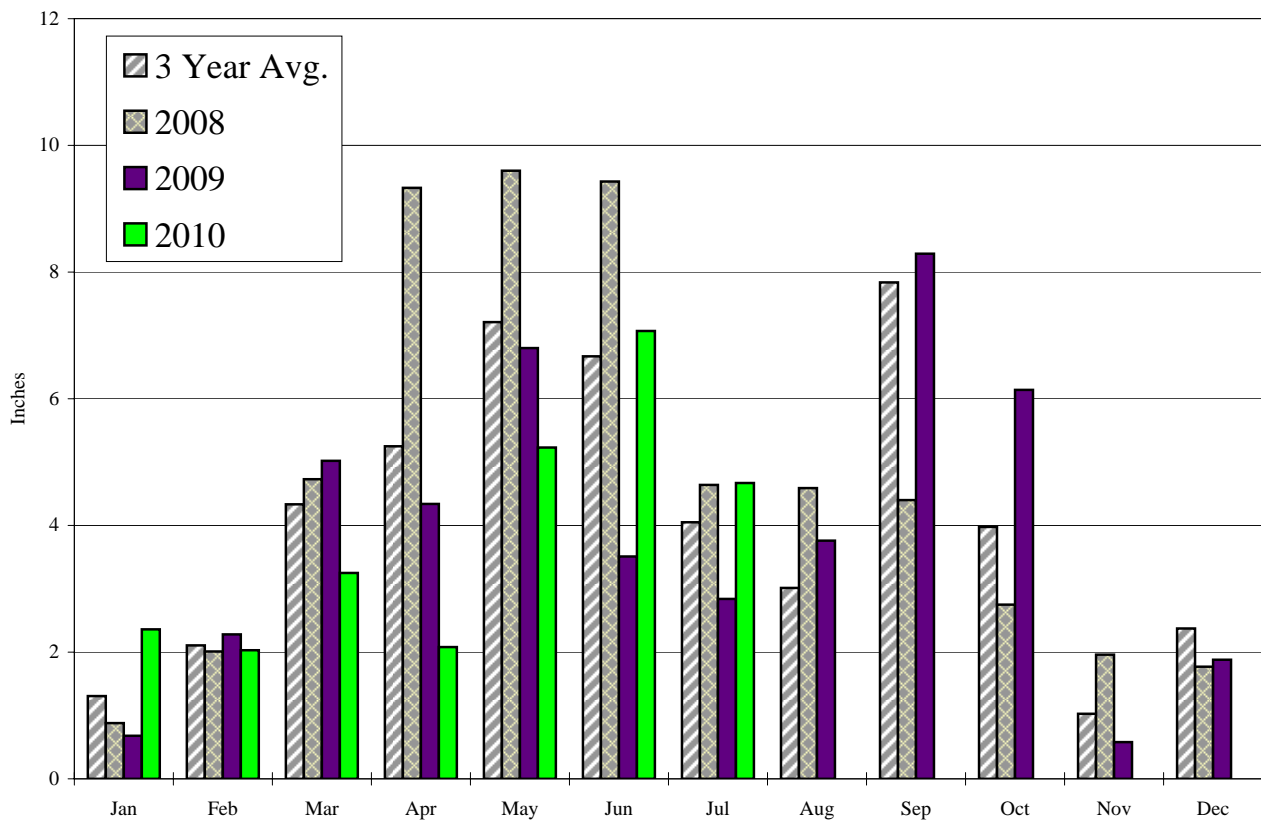
Month	10 Year Avg	08 Avg	09 Avg	10 Avg	10 Total
Jan	92.0	96.9	89.3	97.7	2,931.8
Feb	87.1	87.7	90.2	89.1	2,494.5
Mar	85.7	82.9	87.9	86.9	2,694.5
Apr	93.3	91.0	88.9	95.8	2,875.3
May	100.1	95.2	97.1	102.1	3,165.9
Jun	113.2	98.6	132.1	119.6	3,348.3
Jul	132.0	125.6	142.8	125.1	3,753.2
Aug	137.6	134.9	130.0		
Sep	117.2	111.0	103.4		
Oct	100.5	113.0	91.3		
Nov	90.0	95.3	94.9		
Dec	86.4	91.4	91.4		



City of Tulsa Total Rainfall (Inches)

As of July 31, 2010

Month	30 Year Normal	2007	2008	2009	2010	3 Year Average
Jan	1.54	2.27	0.88	0.68	2.36	1.31
Feb	1.97	1.23	2.01	2.28	2.03	2.11
Mar	3.46	3.07	4.73	5.02	3.25	4.33
Apr	3.72	2.25	9.33	4.34	2.08	5.25
May	5.60	10.03	9.60	6.80	5.23	7.21
Jun	4.44	9.17	9.43	3.51	7.07	6.67
Jul	3.09	6.10	4.64	2.84	4.67	4.05
Aug	3.12	0.69	4.59	3.76		3.01
Sep	4.70	10.82	4.40	8.29		7.84
Oct	3.66	3.04	2.75	6.14		3.98
Nov	3.13	0.54	1.96	0.58		1.03
Dec	2.15	3.47	1.77	1.88		2.37
Total	40.58	52.68	56.09	46.12	26.69	49.15



Tulsa Metropolitan Utility Authority
Financial Management Report
Sewer Operating Fund (7030)
As of July 31, 2010

Budgetary Basis

Resources	Total Estimate	Year-to-Date Actual	YTD Estimate	Actual Percent of Budget
Appropriated Fund Balance	\$ 8,820,000	\$ 8,820,000	100.0%	100.0%
Revenues:				
Licenses/Permits	304,000	8,000	3.9%	2.6%
Charges for Services	65,259,000	5,458,000	8.4%	8.4%
Utility Services	2,316,000	15,000	8.3%	0.6%
Interest Income	408,000	31,000	8.3%	7.6%
Miscellaneous Revenue	139,000	33,000	5.8%	23.7%
Total Revenue	<u>68,426,000</u>	<u>5,545,000</u>	8.4%	8.1%
Total Resources	<u>\$ 77,246,000</u>	<u>\$ 14,365,000</u>	7.4%	18.6%

Appropriations/Commitments	Total Appropriation	Year-to-Date Actual Expenditures/ Encumbrances/ Commitments	YTD Estimate	Actual Percent of Budget	Budget Balance
Policy Development					
Other Services and Charges	\$ 205,000	\$ 29,000	16.0%	14.1%	\$ 176,000
Capital Outlay	317,000	203,000	67.1%	64.0%	114,000
Engineering Services					
Other Services and Charges	826,000	20,000	10.6%	2.4%	806,000
Capital Outlay	139,000	77,000	58.8%	55.4%	62,000
Environmental Operations					
Personal Services	9,553,000	558,000	8.3%	5.8%	8,995,000
Materials and Supplies	3,446,000	1,479,000	29.4%	42.9%	1,967,000
Other Services and Charges	24,975,000	5,139,000	21.7%	20.6%	19,836,000
Capital Outlay	9,169,000	2,920,000	31.0%	31.8%	6,249,000
Facilities Maintenance					
Capital Outlay	15,000	-	8.3%	0.0%	15,000
Working In Neighborhoods					
Personal Services	89,000	8,000	8.3%	9.0%	81,000
Materials and Supplies	1,000	-	8.3%	0.0%	1,000
Other Services and Charges	3,000	-	8.3%	0.0%	3,000
Development Services					
Other Services and Charges	13,000	13,000	100.0%	100.0%	-
Cost Allocations					
Personal Services	9,223,000	638,000	8.3%	6.9%	8,585,000
Materials and Supplies	1,475,000	300,000	18.8%	20.3%	1,175,000
Other Services and Charges	2,143,000	806,000	20.6%	37.6%	1,337,000
IT - PW/Capital Direct Charges					
Capital Outlay	215,000	-	8.3%	0.0%	215,000
Debt Service	11,400,000	678,000	8.3%	5.9%	10,722,000
Transfer/Sinking Fund	4,039,000	391,000	8.3%	9.7%	3,648,000
Total Appropriations/Commitments	<u>\$ 77,246,000</u>	<u>\$ 13,259,000</u>	17.2%	17.2%	\$ 63,987,000

Tulsa Metropolitan Utility Authority
Sewer Operating Fund (7030)
Schedule of Monthly Budgeted Revenue Estimates, Sewer Billings, and Collections

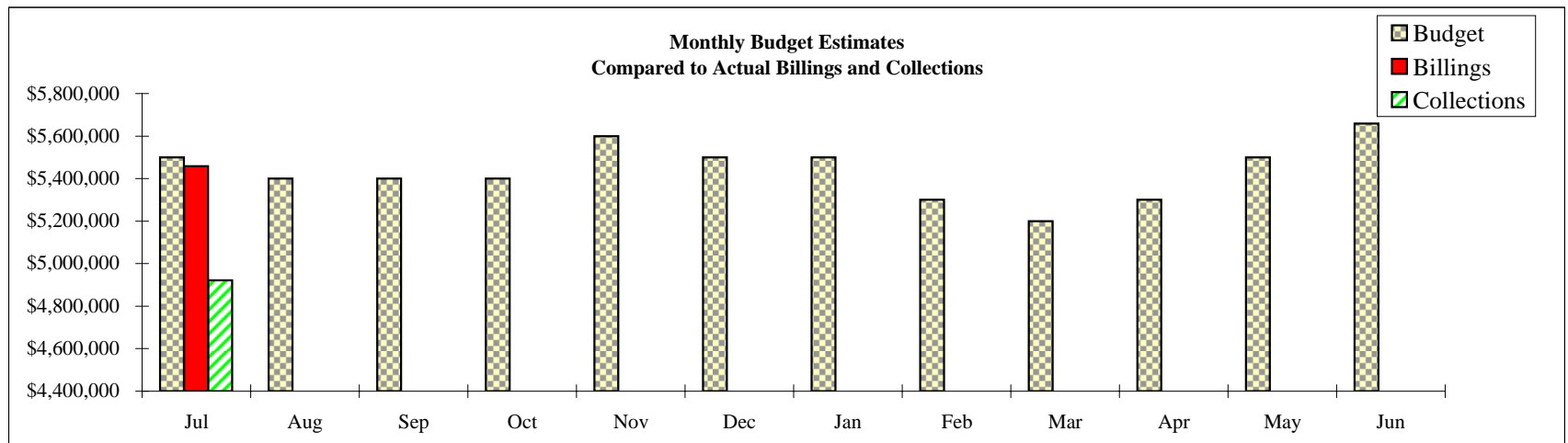
As of July 31, 2010

Budgetary Basis

Month	Budget	Actual Billings*	Actual % of Budget	Actual Collections**	% of Billings	Actual % of Budget
Jul	\$ 5,500,000	\$ 5,458,000	99%	\$ 4,921,000	90%	89%
Aug	5,400,000					
Sep	5,400,000					
Oct	5,400,000					
Nov	5,600,000					
Dec	5,500,000					
Jan	5,500,000					
Feb	5,300,000					
Mar	5,200,000					
Apr	5,300,000					
May	5,500,000					
Jun	5,659,000					
Total	\$ 65,259,000	\$ 5,458,000	8%	\$ 4,921,000	90%	8%

* Revenue estimates from City Departments are included in monthly budget estimates.

** Sewer accounts receivable were \$4,531,377 as of July 31, 2010 with \$3,810,177 (0 - 30 Days), \$435,198 (31 - 60 Days), \$96,820 (61 - 90 Days) and \$189,182 (Over 91 Days).



Tulsa Metropolitan Utility Authority
Sewer Operating Fund (7030)
Comparison of Monthly Budget Estimates and Sewer Billings to Prior Year
As of July 31, 2010
Budgetary Basis

Month	Budget Estimate			Actual Billings		
	FY09-10	FY10-11	Change	FY09-10	FY10-11	Change
Jul	\$ 4,800,000	\$ 5,500,000	15%	\$ 5,349,000	\$ 5,458,000	2%
Aug	5,200,000	5,400,000	4%	5,190,000	-	
Sep	5,200,000	5,400,000	4%	5,159,000	-	
Oct	4,900,000	5,400,000	10%	4,455,000	-	
Nov	5,100,000	5,600,000	10%	4,568,000	-	
Dec	5,100,000	5,500,000	8%	4,601,000	-	
Jan	5,100,000	5,500,000	8%	5,147,000	-	
Feb	4,800,000	5,300,000	10%	4,649,000	-	
Mar	4,700,000	5,200,000	11%	4,278,000	-	
Apr	4,800,000	5,300,000	10%	4,814,000	-	
May	5,000,000	5,500,000	10%	4,908,000	-	
Jun	5,127,000	5,659,000	10%	5,110,000	-	
Total	\$ 59,827,000	\$ 65,259,000	9%	\$ 58,228,000	\$ 5,458,000	NA

Tulsa Authority for the Recovery of Energy

Financial Management Report

TARE Operating Fund (3623)

As of July 31, 2010

Budgetary Basis

Resources	Total Estimate	Year-to-Date Actual	YTD Estimate	Actual Percent of Budget	
Appropriated Fund Balance	\$ 4,020,000	\$ 4,020,000	100.0%	100.0%	
Revenues:					
Charges for Services	21,566,000	1,797,000	8.3%	8.3%	
Interest Income	164,000	20,000	7.9%	12.2%	
Miscellaneous Revenue	7,000	8,000	0.0%	114.3%	
Total Revenue	<u>21,737,000</u>	<u>1,825,000</u>	8.3%	8.4%	
Total Resources	<u>\$ 25,757,000</u>	<u>\$ 5,845,000</u>	22.6%	22.7%	
Appropriations/Commitments	Total Appropriation	Year-to-Date Actual Expenditures/ Encumbrances/ Commitments	YTD Estimate	Actual Percent of Budget	Budget Balance
Policy Development					
Other Services and Charges	\$ 3,396,000	\$ 439,000	8.8%	12.9%	\$ 2,957,000
Capital Outlay	92,000	46,000	53.8%	50.0%	46,000
Facilities Maintenance					
Personal Services	385,000	18,000	8.3%	4.7%	367,000
Materials and Supplies	55,000	3,000	13.9%	5.5%	52,000
Other Services and Charges	800,000	37,000	12.5%	4.6%	763,000
Capital Outlay	1,678,000	2,000	8.5%	0.1%	1,676,000
Customer Services					
Personal Services	1,794,000	95,000	8.3%	5.3%	1,699,000
Materials and Supplies	390,000	114,000	33.7%	29.2%	276,000
Other Services and Charges					
TRI	9,250,000	742,000	8.3%	8.0%	8,508,000
M.e.t.	600,000	537,000	8.3%	89.5%	63,000
Misc. Other	3,811,000	542,000	20.1%	14.2%	3,269,000
Total Other Services and Charges	13,661,000	1,821,000	8.3%	13.3%	11,840,000
Capital Outlay	895,000	166,000	25.3%	18.5%	729,000
Cost Allocations					
Personal Services	1,406,000	102,000	8.3%	7.3%	1,304,000
Materials and Supplies	125,000	36,000	31.2%	28.8%	89,000
Other Services and Charges	974,000	576,000	21.4%	59.1%	398,000
IT - PW/Capital Direct Charges					
Capital Outlay	106,000	-	8.3%	0.0%	106,000
Total Appropriations/Commitments	<u>\$ 25,757,000</u>	<u>\$ 3,455,000</u>	12.0%	13.4%	<u>\$ 22,302,000</u>

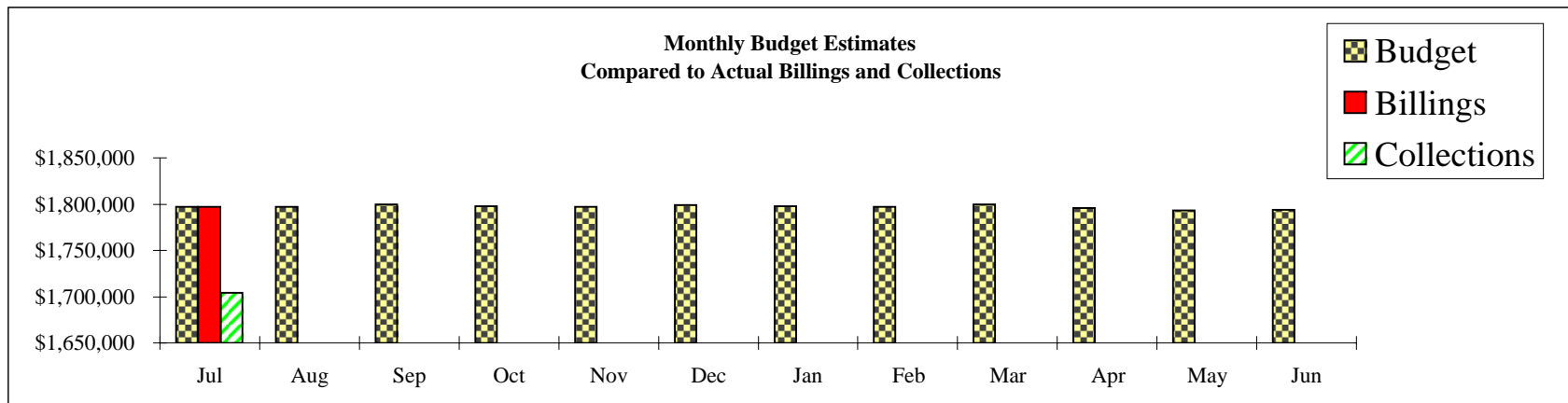
Tulsa Authority for Recovery of Energy
Tulsa Authority for Recovery of Energy Fund (3623)
Schedule of Monthly Budgeted Revenue Estimates, Refuse Billings, and Collections

As of July 31, 2010
 Budgetary Basis

Month	Budget	Actual Billings *	Actual % of Budget	Actual Collections **	% of Billings	Actual % of Budget
Jul	\$ 1,797,000	\$ 1,797,000	100%	\$ 1,704,000	95%	95%
Aug	1,797,000					
Sep	1,800,000					
Oct	1,798,000					
Nov	1,797,000					
Dec	1,799,000					
Jan	1,798,000					
Feb	1,797,000					
Mar	1,800,000					
Apr	1,796,000					
May	1,793,000					
Jun	1,794,000					
Total	\$ 21,566,000	\$ 1,797,000	8%	\$ 1,704,000	95%	8%

* Revenue estimates from City Departments are included in monthly budget estimates.

** TARE accounts receivable were \$1,561,168 as of July 31, 2010 with \$1,182,578 (0 - 30 Days), \$207,702 (31 - 60 Days), \$48,495 (61 - 90 Days) and \$122,393 (Over 91 Days).



Tulsa Authority for Recovery of Energy
Tulsa Authority for Recovery of Energy Fund (3623)
Comparison of Monthly Budget Estimates and Refuse Billings to Prior Year
As of July 31, 2010

Month	Budget Estimate			Actual Billings		
	FY 09-10	FY 10-11	Change	FY 09-10	FY 10-11	Change
Jul	\$ 1,799,501	\$ 1,797,000	0%	\$ 1,777,000	\$ 1,797,000	1%
Aug	1,799,501	1,797,000	0%	1,795,000	-	
Sep	1,799,501	1,800,000	0%	1,784,000	-	
Oct	1,799,501	1,798,000	0%	1,771,000	-	
Nov	1,799,501	1,797,000	0%	1,809,000	-	
Dec	1,799,501	1,799,000	0%	1,791,000	-	
Jan	1,799,501	1,798,000	0%	1,793,000	-	
Feb	1,799,501	1,797,000	0%	1,786,000	-	
Mar	1,799,501	1,800,000	0%	1,794,000	-	
Apr	1,799,501	1,796,000	0%	1,799,000	-	
May	1,799,501	1,793,000	0%	1,787,000	-	
Jun	1,799,489	1,794,000	0%	1,794,000	-	
Total	\$ 21,594,000	\$ 21,566,000	0%	\$ 21,480,000	\$ 1,797,000	NA

Stormwater Drainage Advisory Board
Financial Management Report
Stormwater Enterprise Fund (7010)
As of July 31, 2010

Budgetary Basis

Resources	Total Estimate	Year-to-Date Actual	YTD Estimate	Actual Percent of Budget	
Appropriated Fund Balance	\$ 4,101,000	\$ 4,101,000	100.0%	100.0%	
Licenses/Permits	47,000	5,000	8.5%	10.6%	
Charges for Services	22,400,000	1,870,000	8.3%	8.3%	
Interest Income	302,000	15,000	8.3%	5.0%	
Miscellaneous Revenue	50,000	58,000	2.0%	116.0%	
Total Revenue	<u>22,799,000</u>	<u>1,948,000</u>	8.3%	8.5%	
Total Resources	<u>\$ 26,900,000</u>	<u>\$ 6,049,000</u>	22.3%	22.5%	

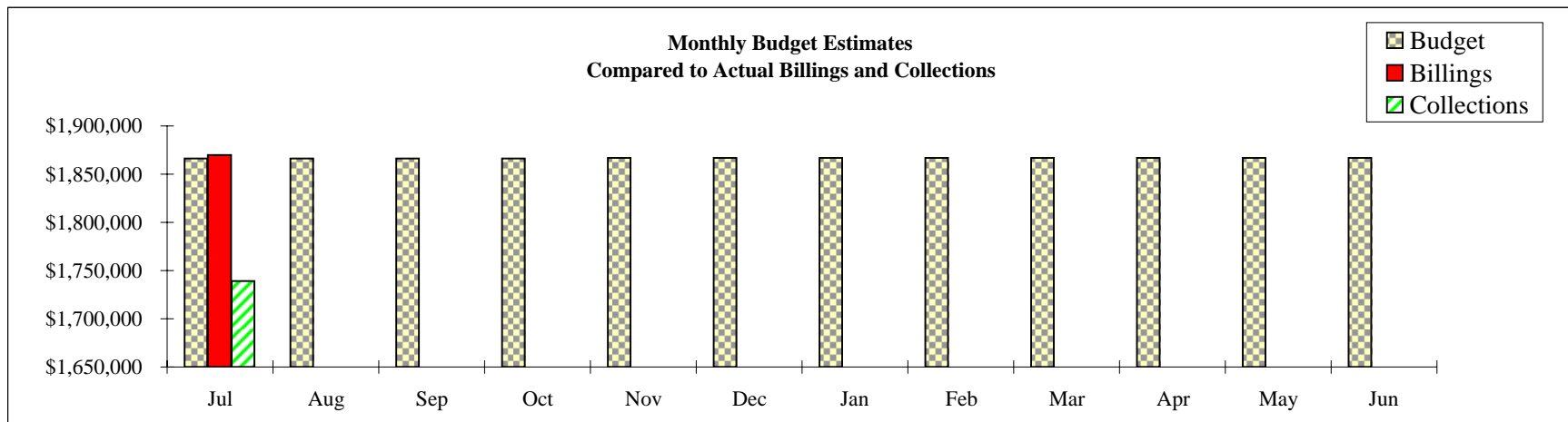
Appropriations/Commitments	Total Appropriation	Year-to-Date Actual Expenditures/ Encumbrances/ Commitments	YTD Estimate	Actual Percent of Budget	Budget Balance
Policy Development					
Other Services and Charges	\$ 15,000	\$ -	8.3%	0.0%	\$ 15,000
Capital Outlay	100,000	59,000	62.7%	59.0%	41,000
Engineering Services					
Personal Services	104,000	9,000	8.3%	8.7%	95,000
Materials and Supplies	1,000	-	8.3%	0.0%	1,000
Other Services and Charges	368,000	167,000	49.9%	45.4%	201,000
Capital Outlay	93,000	-	8.3%	0.0%	93,000
Environmental Operations					
Personal Services	1,359,000	74,000	8.3%	5.4%	1,285,000
Materials and Supplies	260,000	115,000	34.0%	44.2%	145,000
Other Services and Charges	3,924,000	362,000	8.8%	9.2%	3,562,000
Capital Outlay	807,000	122,000	15.1%	15.1%	685,000
Facilities Maintenance					
Personal Services	1,999,000	94,000	8.3%	4.7%	1,905,000
Materials and Supplies	418,000	225,000	25.2%	53.8%	193,000
Other Services and Charges	5,711,000	3,224,000	36.8%	56.5%	2,487,000
Capital Outlay	1,118,000	355,000	37.4%	31.8%	763,000
Development Services					
Capital Outlay	2,000	2,000	83.3%	100.0%	-
Distributed					
Cost Allocations					
Personal Services	5,441,000	388,000	8.3%	7.1%	5,053,000
Materials and Supplies	484,000	126,000	28.5%	26.0%	358,000
Other Services and Charges	1,595,000	614,000	29.9%	38.5%	981,000
IT - PW/Capital Direct Charges					
Capital Outlay	101,000	-	8.3%	0.0%	101,000
Transfer/Projects	3,000,000	250,000	8.3%	8.3%	2,750,000
Total Appropriations/Commitments	<u>\$ 26,900,000</u>	<u>\$ 6,186,000</u>	18.8%	23.0%	\$ 20,714,000

Stormwater Drainage Advisory Board
Stormwater Enterprise Fund (7010)
Schedule of Monthly Budgeted Revenue Estimates, Stormwater Billings, and Collections
As of July 31, 2010
Budgetary Basis

Month	Budget	Actual Billings*	Actual % of Budget	Actual Collections**	% of Billings	Actual % of Budget
Jul	\$ 1,866,000	\$ 1,870,000	100%	\$ 1,739,000	93%	93%
Aug	1,866,000					
Sep	1,866,000					
Oct	1,866,000					
Nov	1,867,000					
Dec	1,867,000					
Jan	1,867,000					
Feb	1,867,000					
Mar	1,867,000					
Apr	1,867,000					
May	1,867,000					
Jun	1,867,000					
Total	\$ 22,400,000	\$ 1,870,000	8%	\$ 1,739,000	93%	8%

* Revenue estimates from City Departments are included in monthly budget estimates.

** Stormwater accounts receivable were \$1,916,684 as of July 31, 2010 with \$1,246,107 (0 - 30 Days), \$148,493 (31 - 60 Days), \$59,608 (61 - 90 Days) and \$462,476 (Over 91 Days).



Stormwater Drainage Advisory Board
Stormwater Enterprise Fund (7010)
Comparison of Monthly Budget Estimates Stormwater Billings to Prior Year
As of July 31, 2010
Budgetary Basis

Month	Budget Estimate			Actual Billings		
	FY09-10	FY10-11	Change	FY09-10	FY10-11	Change
Jul	\$ 1,739,534	\$ 1,866,000	7%	\$ 1,792,000	\$ 1,870,000	4%
Aug	1,739,534	1,866,000	7%	1,799,000	-	
Sep	1,739,534	1,866,000	7%	1,803,000	-	
Oct	1,739,534	1,866,000	7%	1,804,000	-	
Nov	1,794,983	1,867,000	4%	1,867,000	-	
Dec	1,794,983	1,867,000	4%	1,862,000	-	
Jan	1,794,983	1,867,000	4%	1,856,000	-	
Feb	1,794,983	1,867,000	4%	1,856,000	-	
Mar	1,794,983	1,867,000	4%	1,865,000	-	
Apr	1,794,983	1,867,000	4%	1,866,000	-	
May	1,794,983	1,867,000	4%	1,872,000	-	
Jun	1,794,983	1,867,000	4%	1,854,000	-	
Total	\$ 21,318,000	\$ 22,400,000	5%	\$ 22,096,000	\$ 1,870,000	NA

Stormwater Fee-In-Lieu Funds
As of July 31, 2010

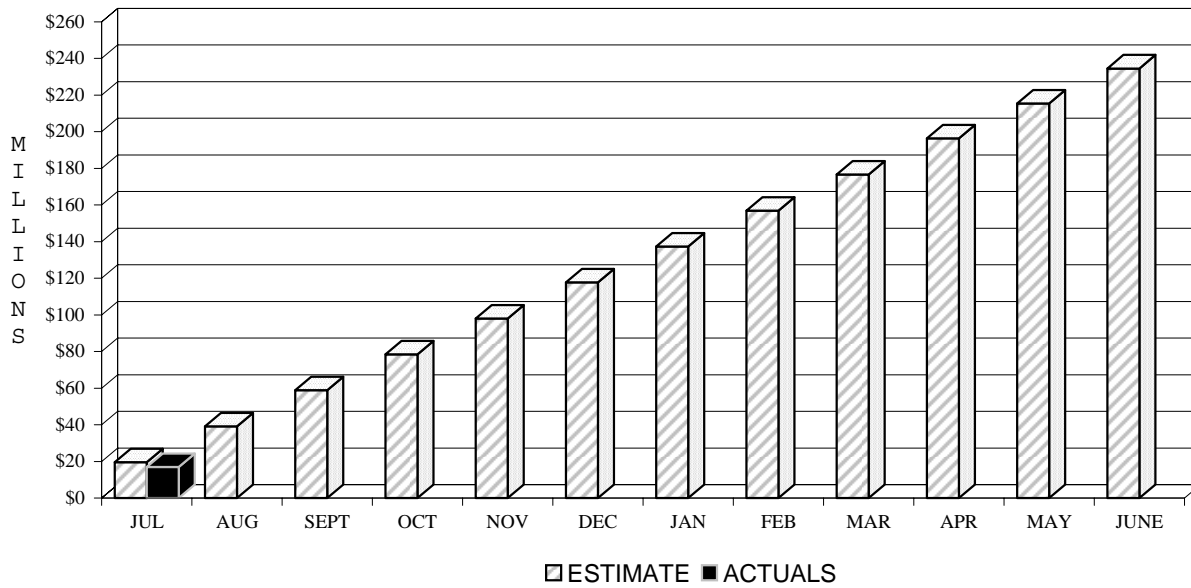
Fund Name	Fees Collected		Interest Earned		Appropriated for Projects	Expenditures		Available for Projects
	July	FYTD	July	FYTD		July	Encumbered/ Committed	
Mingo Creek (6101)	\$32,083	\$32,083	\$616	\$616	\$208,807	\$0	\$63,770	\$228,381
Haikey Creek (6102)	0	0	3,482	3,482	\$2,100,360	0	2,021,732	232,662
Fry Ditch No. 2 (6103)	0	0	552	552	\$360,000	0	0	9,667
Vensel Creek (6104)	0	0	1,049	1,049	632,587	35,608	31,268	55,366
Flat Rock Creek (6105)	0	0	373	373	0	0	0	250,005
Coal Creek (6106)	0	0	307	307	24,968	0	0	181,003
Harlow Creek (6107)	0	0	177	177	0	0	0	118,828
Mooser Creek (6108)	0	0	834	834	0	0	0	559,089
Cherry Creek (6109)	0	0	484	484	0	0	0	324,292
Spunky Creek (6110)	0	0	292	292	15,325	0	0	180,634
Fred Creek (6111)	0	0	221	221	0	0	0	148,092
Downtown (6112)	910	910	247	247	0	0	0	166,404
Parkview (6113)	75	75	97	97	0	0	0	65,121
Perryman (6114)	0	0	374	374	227,000	0	0	23,309
Joe Creek (6115)	9,997	9,997	57	57	54	0	33	43,532
Crow Creek (6116)	0	0	205	205	45,854	0	0	91,799
Hager/Riverside (6117)	0	0	102	102	25,086	0	0	43,135
Total	\$43,065	\$43,065	\$9,472	\$9,471	\$3,640,040	\$35,608	\$2,116,803	\$2,721,320

Tulsa Airport Authority
Financial Management Report
Airport Operating Fund (3701)
As of July 31, 2010

Resources	Total Estimate	Year-to-Date Actual	YTD Estimate	Percent of Budget
Appropriated Fund Balance	\$ 301,000	\$ 301,000	100.0%	100.0%
Revenues:				
Interest Income	42,000	8,000	9.5%	19.0%
Transfers In	14,727,000	1,542,000	8.3%	10.5%
Miscellaneous Revenue	0	0	N/A	N/A
Total Revenue	<u>14,769,000</u>	<u>1,550,000</u>	8.3%	10.5%
Total Resources	<u>\$ 15,070,000</u>	<u>\$ 1,851,000</u>	10.2%	12.3%

Appropriations/Commitments	Total Appropriation	Year-to-Date Actual Expenditures/ Encumbrances/ Commitments	YTD Estimate	Percent of Budget	Budget Balance
Airport - Engineering					
Personal Services	\$ 824,000	\$ 69,000	8.3%	8.4%	\$ 755,000
Materials and Supplies	6,000	0	8.3%	0.0%	6,000
Other Services and Charges	28,000	14,000	41.1%	50.0%	14,000
Capital Outlay	5,000	5,000	N/A	N/A	-
Airport - Maintenance					
Personal Services	3,335,000	162,000	8.3%	4.9%	3,173,000
Materials and Supplies	906,000	235,000	24.4%	25.9%	671,000
Other Services and Charges	1,784,000	319,000	11.2%	17.9%	1,465,000
Capital Outlay	25,000	25,000	100.0%	100.0%	-
Airport - Administrative					
Personal Services	1,647,000	157,000	8.3%	9.5%	1,490,000
Materials and Supplies	99,000	16,000	18.5%	16.2%	83,000
Other Services and Charges	1,608,000	192,000	9.2%	11.9%	1,416,000
Capital Outlay	2,000	2,000	100.0%	100.0%	-
Airport - Operations					
Personal Services	2,498,000	220,000	8.3%	8.8%	2,278,000
Materials and Supplies	116,000	16,000	20.1%	13.8%	100,000
Other Services and Charges	1,694,000	42,000	9.9%	2.5%	1,652,000
Capital Outlay	1,000	1,000	100.0%	100.0%	-
Jones Airport					
Personal Services	302,000	16,000	8.3%	5.3%	286,000
Materials and Supplies	94,000	10,000	11.4%	10.6%	84,000
Other Services and Charges	85,000	9,000	10.1%	10.6%	76,000
Capital Outlay	11,000	11,000	100.0%	100.0%	-
Total Appropriations/Commitments	<u>\$ 15,070,000</u>	<u>\$ 1,521,000</u>	10.4%	10.1%	<u>\$ 13,549,000</u>

**2010-11 PERSONAL SERVICES ACCOUNTS
YEAR-T0-DATE ESTIMATE VS YEAR-T0-DATE ACTUAL**



FUND	DEPARTMENT	JULY ESTIMATE	JULY ACTUAL	UNDER (OVER) EST	MTD BUDGET TRANS/ADM INCR/(DECR)	CUMULATED UNDER (OVER) EST
GENERAL FUND						
	MUNICIPAL COURT	\$201,475	\$182,475	\$19,000	\$0	\$19,000
	LAW ENFORCEMENT	\$5,255,642	\$4,840,497	\$415,145	\$0	\$415,145
	COMMUNITY FIRE SERVICE	\$4,225,855	\$4,087,176	\$138,679	\$0	\$138,679
	INFORMATION TECHNOLOGY	\$931,583	\$842,806	\$88,777	\$0	\$88,777
	PARK & RECREATION	\$472,333	\$379,120	\$93,213	\$0	\$93,213
	PERFORMING ARTS CENTER	\$112,938	\$96,914	\$16,024	\$0	\$16,024
	ECONOMIC DEV and REAL ESTATE MGMT	\$56,808	\$56,473	\$335	\$0	\$335
	WORKING IN NEIGHBORHOODS	\$235,708	\$188,017	\$47,691	\$0	\$47,691
	DEVELOPMENT SERVICES	\$67,924	\$48,367	\$19,557	\$0	\$19,557
	PLANNING	\$60,958	\$60,032	\$926	\$0	\$926
	PUBLIC WORKS	\$454,415	\$295,089	\$159,326	\$0	\$159,326
	MAYOR	\$73,250	\$62,576	\$10,674	\$0	\$10,674
	CITY AUDITOR	\$73,867	\$73,178	\$689	\$0	\$689
	CITY COUNCIL	\$95,333	\$91,519	\$3,814	\$0	\$3,814
	HUMAN RIGHTS	\$38,473	\$37,215	\$1,258	\$0	\$1,258
	LEGAL REPRESENTATION	\$210,557	\$189,578	\$20,979	\$0	\$20,979
	HUMAN RESOURCES	\$211,323	\$181,260	\$30,063	\$0	\$30,063
	FINANCE	\$419,132	\$370,265	\$48,867	\$0	\$48,867
	COMMUNICATIONS	\$59,298	\$57,942	\$1,356	\$0	\$1,356
	DEPT. of GRANTS ADMINISTRATION	\$7,983	\$908	\$7,075	\$0	\$7,075
TOTAL GENERAL FUND		\$13,264,855	\$12,141,405	\$1,123,450	\$0	\$1,123,450

This report only lists selected Personal Services Accounts that are projected for the annual budget. Not all Personal Services Accounts are reported.

2010-11 PERSONAL SERVICES ACCOUNTS

FUND	DEPARTMENT	JULY ESTIMATE	JULY ACTUAL	UNDER (OVER) EST	MTD BUDGET TRANS/ADM INCR/(DECR)	CUMULATED UNDER (OVER) EST
TARE-REFUSE OPERATING FUND						
	PUBLIC WORKS	\$176,022	\$109,570	\$66,452	\$0	\$66,452
AIRPORT OPERATIONS FUND						
	AIRPORT	\$687,066	\$581,980	\$105,086	\$0	\$105,086
STORMWATER ENTERPRISE FUND						
	PUBLIC WORKS	\$286,812	\$174,651	\$112,161	\$0	\$112,161
TMUA-WATER OPERATING FUND						
	INFORMATION TECHNOLOGY	\$8,262	\$7,870	\$392	\$0	\$392
	PUBLIC WORKS	\$1,093,738	\$762,891	\$330,847	\$0	\$330,847
TMUA-WATER OPER. FUND TOTAL		\$1,102,000	\$770,761	\$331,239	\$0	\$331,239
TMUA - SEWER OPERATING FUND						
	WORKING IN NEIGHBORHOODS	\$7,417	\$7,553	(\$136)	\$0	(\$136)
	PUBLIC WORKS	\$764,653	\$525,612	\$239,041	\$0	\$239,041
TMUA-SEWER OPER. FUND TOTAL		\$772,070	\$533,165	\$238,905	\$0	\$238,905
COST ALLOCATION FUND *						
	INFORMATION TECHNOLOGY	\$208,765	\$192,839	\$15,926	\$0	\$15,926
	DEVELOPMENT SERVICES	\$333,141	\$296,557	\$36,584	\$0	\$36,584
	PUBLIC WORKS	\$2,459,832	\$2,015,039	\$444,793	\$0	\$444,793
COST ALLOCATION FUND TOTAL		\$3,001,738	\$2,504,435	\$497,303	\$0	\$497,303
EQUIPMENT MANAGEMENT SERVICE FUND						
	EQUIPMENT MANAGEMENT	\$329,163	\$194,750	\$134,413	\$0	\$134,413
GRAND TOTAL		\$19,619,726	\$17,010,718	\$2,609,008	\$0	\$2,609,008

* Charges allocated to General Fund, Solid Waste Operating Fund, Stormwater Fund, TMUA - Water Operating Fund, and TMUA - Sewer Operating Fund.

This report only lists selected Personal Services Accounts that are projected for the annual budget. Not all Personal Services Accounts are reported.

**MAJOR FUNDS
PRIOR YEAR, CURRENT MONTH, and YTD OVERTIME EXPENDITURES
THROUGH July 31, 2010**

<u>Departments</u>	<u>Prior Year Expenditures/</u>	<u>Current Appropriations</u>	<u>July Expenditures/</u>	<u>Year-to-Date Expenditures/</u>	<u>% Actual</u>	<u>Budget Balance</u>
MUNICIPAL COURT	\$ 14,790	\$ 8,500	\$ 1,032	\$ 1,032	12.1	\$ 7,468
POLICE	3,625,443	3,638,615	200,014	200,014	5.5	3,438,601
FIRE	783,147	967,741	96,339	96,339	10.0	871,402
INFORMATION TECHNOLOGY	590,966	462,871	28,021	28,021	6.1	434,850
PARK & RECREATION	118,205	0	7,535	7,535	N/A	(7,535)
PERFORMING ARTS CENTER	82,829	87,000	4,852	4,852	5.6	82,148
WORKING IN NEIGHBORHOODS	56,581	0	2,386	2,386	N/A	(2,386)
DEVELOPMENT SERVICES	572	34,867	0	0	0.0	34,867
AIRPORTS	292,662	251,500	14,381	14,381	5.7	237,119
PUBLIC WORKS	2,794,352	1,707,788	95,606	95,606	5.6	1,612,182
HUMAN RESOURCES	524	3,100	0	0	0.0	3,100
FINANCE	5,764	8,500	0	0	0.0	8,500
EQUIPMENT MANAGEMENT	87,009	74,970	762	762	1.0	74,208
DEPT OF GRANTS ADMINISTRATION	198	0	0	0	N/A	0
TOTAL OVERTIME	\$ 8,453,042	\$ 7,245,452	\$ 450,928	\$ 450,928	6.2	\$ 6,794,524

Note: The FY11 Overtime budget is 2.93% of the total Personal Services budget for major funds which totaled \$247,007,000 for FY11.

Major funds are:

General Fund, E-911 Fee Operating Fund, Convention Fund, Tare - Refuse Operating Fund, Airport Operating Fund, Stormwater Enterprise Fund, TMUA - Water Operating Fund, TMUA - Sewer Operating Fund, Equipment Management Internal Services Fund.

MONTHLY POSITION STATUS REPORT

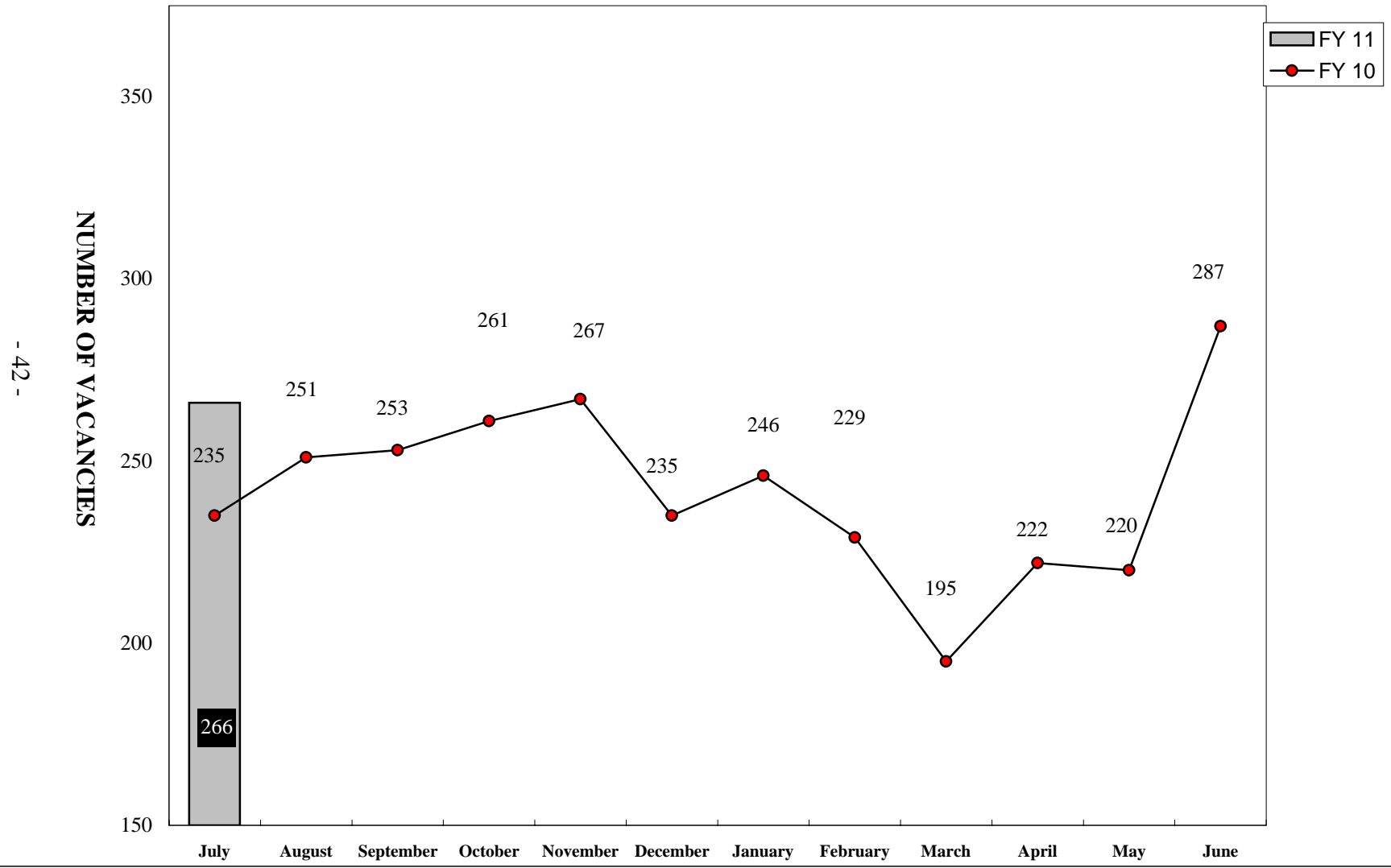
As of August 04, 2010

DEPARTMENT	FULL AND PART-TIME POSITIONS	FULL AND PART-TIME EMPLOYEES	VACANCIES
005 - Parks & Recreation	113	108	5
007 - Airports	157	150	7
010 - Mayor	0	0	0
011 - Economic Development and Real Estate Mgmt	10	10	0
012 - Finance Department	78	70	8
014 - Human Rights Department	9	9	0
015 - Legal Department	27	24	3
017 - Human Resources	40	35	5
018 - Municipal Court	40	40	0
020 - Working In Neighborhoods	74	61	13
021 - Planning Department	12	11	1
023 - Dept of Grants Administration	14	12	2
028 - Performing Arts	29	28	1
031 - Police Department	853	826	27
032 - Fire Department	698	651	47
034 - Information Technology	248	217	31
040 - Public Works	1285	1188	97
041 - Development Services	82	71	11
042 - Communications	14	14	0
053 - Equipment Management	79	72	7
060 - City Auditor	11	10	1
070 - City Council	13	13	0
TOTALS	3886	3620	266

REPT: POS001A
DATE: 4, August 2010

NOTE: Data excludes abolished, temporary, SE and UC
classifications; excludes dual encumbrances.

REPORT ON MONTHLY POSITION VACANCIES



SINKING FUND EXPENDITURES
Period Ending July 31, 2010 and 2009

	FY 2011	FY 2010
Worker's Compensation:		
Airport	- \$ -	(1) \$ 19,377
Equipment Management	- -	(1) 8,568
Fire	(2) 44,084	(3) 96,707
Police	(5) 88,009	(3) 78,655
Public Works	(2) 18,432	- -
Telecommunications	- -	(1) 27,314
Total	150,525	\$ 230,621
District Court:		
White, Melissa	25,000	-
Total	25,000	-
Grand Total	\$ 175,525	\$ 230,621

INVESTMENT REPORT
Executive Summary
July 31, 2010

The City of Tulsa's average principal balance of pooled funds totaled \$442 million for the month ending July 31, 2010. Interest income was \$661,383¹; comprised of \$920,585 in interest payments, and a \$259,202 decrease in accrued interest. The annualized yield was 1.80%, 165 basis points (bps) over the benchmark yield² of 0.15% and 43 bps under the July 2009 pool yield of 2.23%. The weighted-average maturity of the pool was 1.92 years. For the same period last year, the pool's weighted-average maturity was 1.95 years. Bonds purchased this month carried an average-weighted yield to maturity of 1.44% and a 2.4 year average maturity. The weighted-average yield of matured, sold and called bonds was 2.03%.

Interest Rates	Consensus -Quarterly Avg.						
	Latest 2Q '10	3Q '10	4Q '10	1Q '11	2Q '11	3Q '11	4Q '11
Fed. Funds Rate	0.19	0.2	0.2	0.3	0.5	0.9	1.3
Prime Rate	3.25	3.2	3.2	3.3	3.5	3.9	4.4
3-m T-Bill	0.15	0.2	0.2	0.3	0.6	1.0	1.4
6-m T-Bill	0.22	0.2	0.3	0.4	0.7	1.1	1.6
1-y T-Bill	0.38	0.4	0.5	0.6	0.9	1.4	1.8
2-y T-Note	0.87	0.7	0.9	1.1	1.4	1.8	2.2
5-y T-Note	2.25	1.9	2.2	2.4	2.6	2.9	3.2

Source: 8-1-10 Blue Chip Financial Forecast

The Blue Chip Financial Forecast³ consensus forecast of U.S. inflation-adjusted economic growth in the second half of this year and in 2011 slipped over the past month, as panelists reacted to further evidence of a downshift in activity. Benchmark revisions to the National Income and Product Accounts showed that

the recession of 2008-2009 was steeper than previously estimated and that, notwithstanding the upward revision to first quarter 2010 (10Q1) growth, the rebound in Gross Domestic Product (GDP) over the past year was less vigorous than previously estimated by the government. Waning federal stimulus and smaller contributions to growth from business inventories are widely expected to weigh on GDP growth in the second half of this year. Manufacturing activity, in particular, appears poised to moderate over the next several quarters, capping the pace of overall economic growth. Private sector employment still is expected to improve in the second half of this year, but less vigorously than predicted a month ago. The consensus forecasts that the unemployment rate will stand at 9.4% in December versus its June level of 9.5%, but the forecast of the December 2011 jobless rate rose 0.2% this month to 8.7%. Due to lowered expectations for economic growth and inflation, almost half of the Blue Chip panelists now believe the Federal Reserve will refrain from raising interest rates until at least the second half of 2011.

As for inflation, the chained GDP price index now is forecast by the consensus to rise at a seasonally-adjusted annual rate of 1.2% in Q3 of this year and at a 1.3% rate in Q4. The Consumer Price Index (CPI) is now predicted by the consensus to increase at an annualized rate of 1.7% in the first half of next year.

Treasuries and corporate credits have continued to rally more than anticipated by the vast majority of Blue Chip panelists. As a result, there were further reductions this month in consensus forecasts of Treasury and corporate yields over the forecast horizon. The consensus now predicts 5-year Treasury note yields will not average 3.0% until the final quarter of next year.

¹ Net Interest Income – Interest received and any capital gains realized for the month plus the change in accrued interest from the prior month.

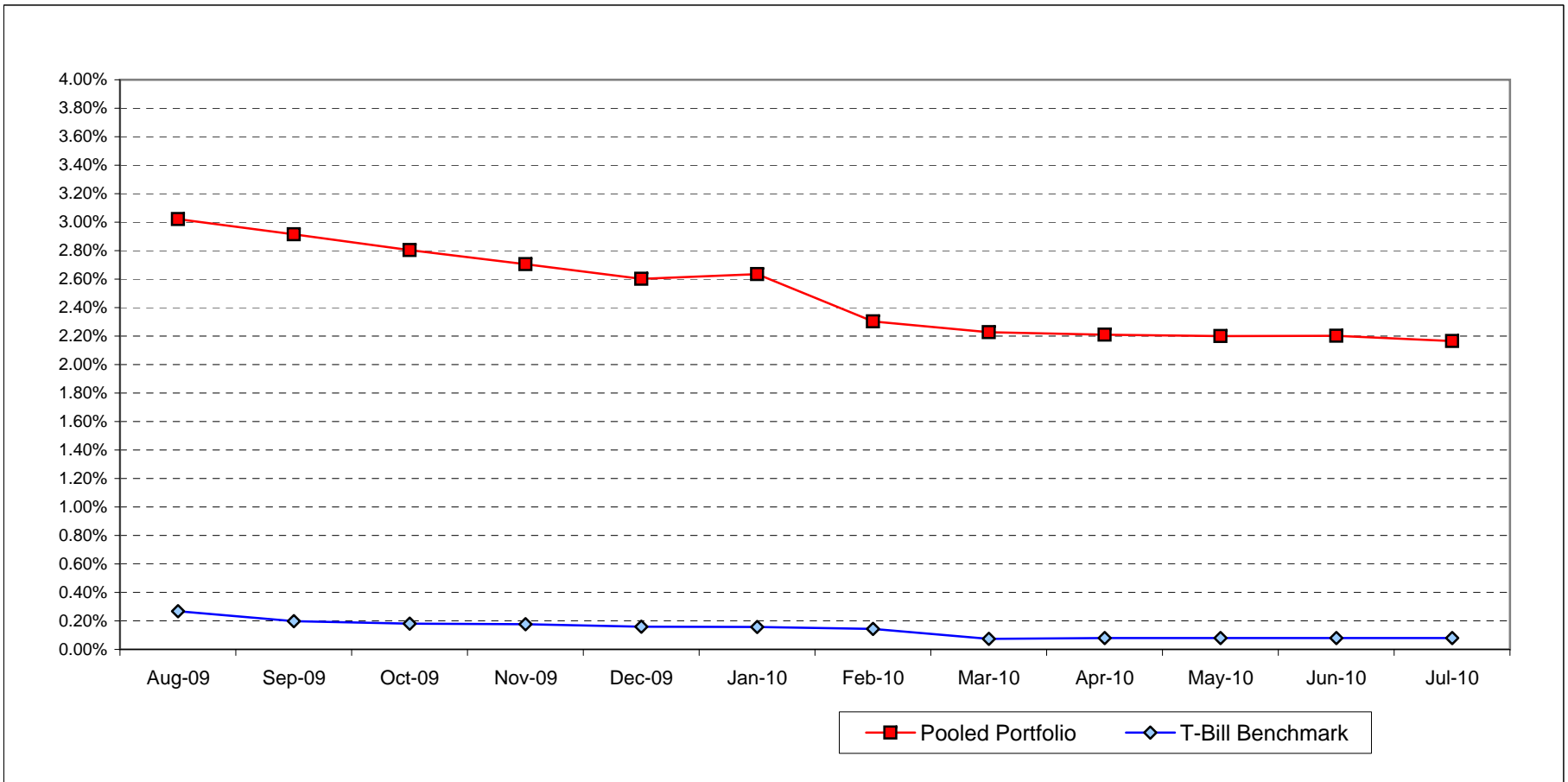
² The City's Investment Policy uses the average 30-day United States Treasury bill yield as a benchmark for portfolio performance.

³ Blue Chip Financial Forecast, August 1, 2010

12 Month Rolling Average Portfolio and Benchmark Yields

	<u>Aug-09</u>	<u>Sep-09</u>	<u>Oct-09</u>	<u>Nov-09</u>	<u>Dec-09</u>	<u>Jan-10</u>	<u>Feb-10</u>	<u>Mar-10</u>	<u>Apr-10</u>	<u>May-10</u>	<u>Jun-10</u>	<u>Jul-10</u>
Pooled Portfolio	3.02%	2.91%	2.80%	2.71%	2.60%	2.63%	2.30%	2.23%	2.21%	2.20%	2.20%	2.17%
T-Bill Benchmark	0.27%	0.20%	0.18%	0.18%	0.16%	0.16%	0.14%	0.07%	0.08%	0.08%	0.08%	0.08%

-45-



Pooled Portfolio Performance

<u>Month</u>	<u>Interest Received</u>	<u>Capital Gains</u>	<u>Total Received</u>	<u>Accrued Interest</u>	<u>Net Income</u>	<u>Average Portfolio</u>	<u>Annualized Yield</u>	<u>Benchmark Yield</u>	<u>FYTD Avg Yield</u>	<u>FYTD Benchmark Avg Yld</u>
<u>FY 10 - 11</u>										
7/31/10	\$920,584.54	-	920,584.54	-259,201.83	661,382.71	441,906,369	1.80%	0.15%	1.80%	0.15%
8/31/09										
9/30/09										
10/31/09										
11/30/09										
12/31/09										
1/31/10										
2/28/10										
3/31/10										
4/30/10										
5/31/10										
6/30/10										
Total	\$920,584.54	-	920,584.54	(259,201.83)	661,382.71	\$441,906,369				

Pooled Portfolio/Budget Comparison

<u>Month</u>	<u>Net Income</u>	<u>Projected Income</u>	<u>Variance \$</u>	<u>Percentage %</u>	<u>Average Portfolio</u>
<u>FY 10-11</u>					
7/31/10	\$661,382.71	637,248	24,134.71	3.79%	441,906,369
8/31/10			-	-	
9/30/10			-	-	
10/31/10			-	-	
11/30/10			-	-	
12/31/10			-	-	
1/31/11			-	-	
2/28/11			-	-	
3/31/11			-	-	
4/30/11			-	-	
5/31/11			-	-	
6/30/11			-	-	
Total Fiscal Y-T-D	\$661,382.71	637,248	24,134.71	3.79%	441,906,369

Pooled Portfolio Purchases

For Month Ended: 7/31/10

Investment #	Type	Yield	Purchase Date	Call Date	Maturity Date	Principal	Par	
2001658	Valley NB	1.06%	7/6/10		1/5/11	\$1,500,000	\$1,500,000	
2001659	FHLMC q f 7/15	1.97% *	7/7/10	1/7/11	1/7/11	\$5,019,250	\$5,000,000	
2001660	USTN	0.63%	7/9/10		6/30/12	\$4,999,805	\$5,000,000	
2001661	FFCB cc 7/8/11	1.79%	7/9/10	7/8/11	7/8/14	\$4,995,500	\$5,000,000	
2001662	USTN	1.82%	7/9/10		6/30/15	\$5,012,109	\$5,000,000	
2001663	FHLMC cf7/13	1.47% *	7/12/10	7/12/11	7/12/11	\$5,001,563	\$5,000,000	
2001664	FNMA f7/22/15	1.80% *	7/22/10	7/22/11	7/22/11	\$5,022,000	\$5,000,000	
2001665	FHLMC q 1/26/11	1.30%	7/26/10	1/26/11	7/26/13	\$5,000,000	\$5,000,000	
2001666	FHLB cc10/27/10	0.88%	7/27/10	10/27/10	7/27/12	\$5,000,000	\$5,000,000	
2001667	FHLB q 7/29/11	1.64%	7/29/10		7/29/14	\$4,996,250	\$5,000,000	
2001668	FHLB q 7/26/11	0.76%	7/30/10	7/26/11	7/26/12	\$4,999,500	\$5,000,000	
2001669	USTN	0.82%	7/30/10		4/15/13	\$5,124,609	\$5,000,000	
						Grand Total:	\$56,670,586	\$56,500,000

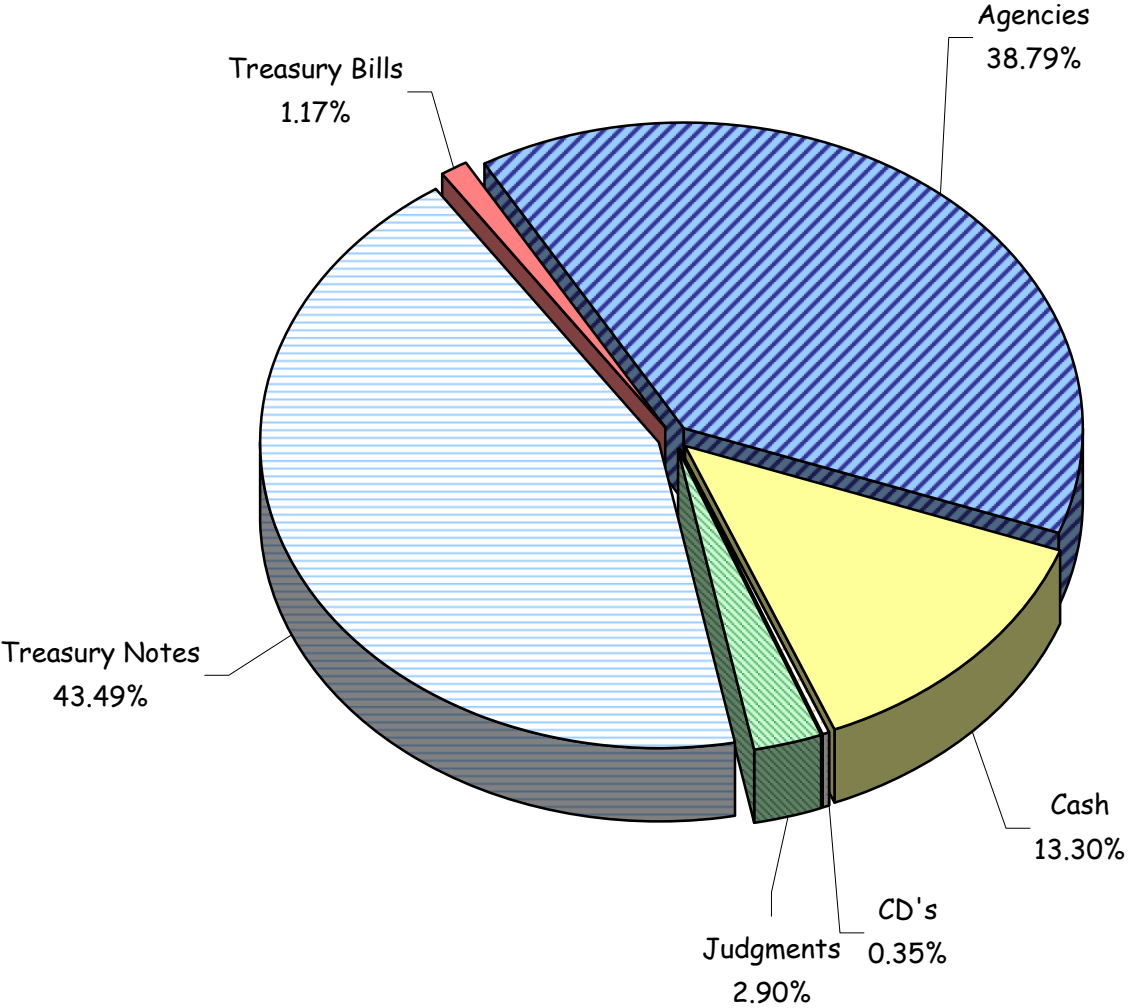
* yield to call

Weighted Avg. Yield to Maturity:	1.44%	Weighted Avg. Maturity:	2.38	years
Weighted Avg. Yield to Call:	1.34%	Weighted Avg. Life to Call:	1.65	years

Pooled Portfolio by Type
as of July 31, 2010

Investment Number	Type	Yield to Maturity	Purchase Date	Maturity Date	Days to Maturity	Price	Par Value	Total Type	% Type	WAM	Avg Yield
2001652	FFCB cc f12/13	1.21%	6/28/10	9/2/10	33	100.1	5,000,000				
2001527	FFCB	3.33%	7/30/08	9/13/10	44	103.9	5,000,000				
2001546	FHLB	1.65%	2/9/09	12/10/10	132	105.6	5,000,000				
2001653	FHLMC q f 6/13	1.28%	6/28/10	12/28/10	150	100.2	5,000,000				
2001659	FHLMC q f 7/15	1.97%	7/7/10	1/7/11	160	100.4	5,000,000				
2001642	FHLMC qsu f2/15	2.13%	2/26/10	2/26/11	210	99.9	5,000,000				
2001654	FHLB cc f7/14	0.74%	6/28/10	7/7/11	341	102.7	5,000,000				
2001663	FHLMC cf7/13	1.47%	7/12/10	7/12/11	346	100.0	5,000,000				
2001655	FHLB	0.50%	6/28/10	7/19/11	353	100.3	5,000,000				
2001664	FNMA f7/22/15	1.80%	7/22/10	7/22/11	356	100.4	5,000,000				
2001620	FFCB cc 12/7/10	1.00%	12/7/09	12/7/11	494	100.0	5,000,000				
2001598	FNMA c 9/23/10	1.30%	9/30/09	12/30/11	517	100.0	5,000,000				
2001668	FHLB q 7/26/11	0.76%	7/30/10	7/26/12	726	100.0	5,000,000				
2001666	FHLB cc10/27/10	0.88%	7/27/10	7/27/12	727	100.0	5,000,000				
2001618	FHLB	1.57%	11/20/09	12/14/12	867	100.5	10,000,000				
2001501	FHLB nc	3.51%	3/28/08	3/8/13	951	101.6	5,000,000				
2001520	FFCB	3.70%	5/9/08	3/25/13	968	99.3	5,000,000				
2001656	FNMA q 12/28	1.38%	6/28/10	3/28/13	971	100.0	5,000,000				
2001597	FNMA c 9/28/10	2.10%	9/28/09	3/28/13	971	100.0	5,000,000				
2001508	FNMA nc	4.05%	4/18/08	4/18/13	992	100.0	5,000,000				
2001614	FFCB c 10/29/10	2.06%	10/29/09	4/29/13	1003	99.9	5,000,000				
2001665	FHLMC q 1/26/11	1.30%	7/26/10	7/26/13	1091	100.0	5,000,000				
2001590	FHLB cc 8/19/11	2.76%	8/28/09	8/19/13	1115	100.0	5,000,000				
2001595	FFCB c 9/23/10	2.40%	9/23/09	9/23/13	1150	99.8	5,000,000				
2001657	FHLMC q 12/30/10	1.75%	6/30/10	12/30/13	1248	100.0	5,000,000				
2001661	FFCB cc 7/8/11	1.79%	7/9/10	7/8/14	1438	99.9	5,000,000				
2001667	FHLB q 7/29/11	1.64%	7/29/10	7/29/14	1459	100.0	5,000,000				
2001613	FHLMC 10/28/10	3.02%	10/28/09	10/28/14	1550	99.9	5,000,000				
2001616	FNMA c 10/29/10	3.00%	10/29/09	10/29/14	1551	100.0	5,000,000				
2001641	FHLMC q 8/24/10	3.05%	2/24/10	2/24/15	1669	100.0	5,000,000				
2001649	FHLMC q12/10/10	2.88%	5/11/10	3/10/15	1683	100.0	5,000,000				WAM = 2.31
2001651	FHLMC q 8/12/10	3.01%	5/12/10	5/12/15	1746	100.0	5,000,000				WAMC = 0.78
								\$165,000,000	38.79%		Avg Yld = 2.02%
5	Cash	0.31%	7/30/10	8/2/10	2	1.00	56,598,225				WAM = 0.005
								\$56,598,225.34	13.30%		Avg Yld = 0.31%
2001658	CD	1.07%	7/6/10	1/5/11	158	1.00	1,500,000				WAM = 0.43
								\$1,500,000.00	0.35%		Avg Yld = 1.07%
1	Judgments	7.95%	11/25/08	1/31/11	184	1.00	5,954,472				
2	Judgments	7.57%	2/1/09	1/31/12	549	1.00	5,058,716				
3	Judgments	5.25%	1/21/10	1/31/13	915	1.00	1,246,386				
4	Judgments	5.25%	7/15/10	1/31/14	1280	1.00	58,508				WAM = 1.13
								\$12,318,082.61	2.90%		Avg Yld = 7.51%
2001608	USTB	0.38%	10/27/09	10/21/10	82	99.6	5,000,000				WAM = 0.22
								\$5,000,000.00	1.18%		Avg Yld = 0.38%
2001585	USTN	0.61%	8/7/09	8/31/10	31	101.9	5,000,000				
2001599	USTN	0.35%	10/7/09	9/30/10	61	101.6	5,000,000				
2001586	USTN	0.85%	8/7/09	11/30/10	122	100.5	5,000,000				
2001635	USTN	0.36%	2/17/10	2/28/11	212	100.5	5,000,000				
2001587	USTN	1.12%	8/7/09	3/31/11	243	99.6	5,000,000				
2001517	USTN	2.64%	5/7/08	5/31/11	304	106.5	10,000,000				
2001565	USTN	0.88%	5/21/09	5/31/11	304	108.0	5,000,000				
2001570	USTN	1.28%	6/17/09	8/31/11	396	107.2	5,000,000				
2001569	USTN	1.40%	6/15/09	9/30/11	426	107.0	5,000,000				
2001609	USTN	0.98%	10/27/09	9/30/11	426	100.1	5,000,000				
2001600	USTN	0.96%	10/7/09	11/15/11	472	101.6	5,000,000				
2001591	USTN	1.03%	9/14/09	12/31/11	518	108.1	5,000,000				
2001510	USTN	2.83%	5/1/08	1/31/12	549	106.8	10,000,000				
2001660	USTN	0.63%	7/9/10	6/30/12	700	100.0	5,000,000				
2001648	USTN	0.89%	5/11/10	6/30/12	700	108.4	5,000,000				
2001571	USTN	1.75%	6/17/09	7/31/12	731	108.7	5,000,000				
2001568	USTN	1.94%	6/15/09	8/31/12	762	106.8	5,000,000				
2001601	USTN	1.33%	10/8/09	9/15/12	777	100.1	5,000,000				
2001610	USTN	1.50%	10/27/09	10/15/12	807	99.6	5,000,000				
2001477	USTN	3.30%	12/12/07	11/30/12	853	100.3	5,000,000				
2001593	USTN	1.72%	9/16/09	2/28/13	943	103.4	5,000,000				
2001669	USTN	0.82%	7/30/10	4/15/13	989	102.5	5,000,000				
2001582	USTN	1.86%	7/10/09	6/30/13	1065	105.8	5,000,000				
2001572	USTN	2.21%	6/17/09	7/31/13	1096	104.6	5,000,000				
2001611	USTN	1.99%	10/27/09	10/31/13	1188	102.9	5,000,000				
2001602	USTN	1.83%	10/8/09	11/30/13	1218	100.7	5,000,000				
2001647	USTN	2.24%	3/26/10	3/31/14	1339	98.1	5,000,000				
2001580	USTN	2.29%	7/9/09	6/30/14	1430	101.6	10,000,000				
2001589	USTN	2.51%	8/25/09	7/31/14	1461	100.5	5,000,000				
2001612	USTN	2.34%	10/27/09	8/31/14	1492	100.2	5,000,000				
2001603	USTN	2.19%	10/8/09	9/30/14	1522	100.9	5,000,000				
2001643	USTN	2.34%	3/8/10	2/28/15	1673	100.2	5,000,000				
2001650	USTN	2.24%	5/11/10	4/30/15	1734	101.2	5,000,000				
2001662	USTN	1.82%	7/9/10	6/30/15	1795	100.2	5,000,000				WAM = 2.27
								\$185,000,000.00	43.49%		Avg Yld = 1.70%
								\$425,416,307.95	100.00%		

Portfolio Segmentation



-TC-

Pooled Portfolio by Maturity Date
as of July 31, 2010

Investment Number	Type	Description	Yield to Maturity	Purchase Date	Call Date	Maturity Date	Days to Maturity	Purchase Price	Par Value
5	Cash	Cash	0.31%	7/30/10		8/2/10	2	1.00	56,598,225
2001585	Treasury Note	USTN	0.61%	8/7/09		8/31/10	31	101.88	5,000,000
2001652	Agency	FFCB ccf12/13	1.21%	6/28/10	9/2/10	9/2/10	33	100.14	5,000,000
2001527	Agency	FFCB	3.33%	7/30/08		9/13/10	44	103.89	5,000,000
2001599	Treasury Note	USTN	0.35%	10/7/09		9/30/10	61	101.62	5,000,000
2001608	Treasury Bill	USTB	0.38%	10/27/09		10/21/10	82	99.63	5,000,000
2001586	Treasury Note	USTN	0.85%	8/7/09		11/30/10	122	100.52	5,000,000
2001546	Agency	FHLB	1.65%	2/9/09		12/10/10	132	105.58	5,000,000
2001653	Agency	FHLMC q f 6/13	1.28%	6/28/10	12/28/10	12/28/10	150	100.17	5,000,000
2001658	CD	Valley NB	1.06%	7/6/10		1/5/11	158	1.00	1,500,000
2001659	Agency	FHLMC q f 7/15	1.97%	7/7/10	1/7/11	1/7/11	160	100.39	5,000,000
1	Judgments	Judgments	7.95%	11/25/08		1/31/11	184	1.00	5,954,472
2001642	Agency	FHLMC qsu f2/15	2.13%	2/26/10	8/26/10	2/26/11	210	99.87	5,000,000
2001635	Treasury Note	USTN	0.36%	2/17/10		2/28/11	212	100.53	5,000,000
2001587	Treasury Note	USTN	1.12%	8/7/09		3/31/11	243	99.60	5,000,000
2001517	Treasury Note	USTN	2.64%	5/7/08		5/31/11	304	106.53	10,000,000
2001565	Treasury Note	USTN	0.88%	5/21/09		5/31/11	304	108.02	5,000,000
2001654	Agency	FHLB cc f7/14	0.74%	6/28/10	7/7/11	7/7/11	341	102.71	5,000,000
2001663	Agency	FHLMC cf7/13	1.47%	7/12/10	7/12/11	7/12/11	346	100.03	5,000,000
2001655	Agency	FHLB	0.50%	6/28/10		7/19/11	353	100.28	5,000,000
2001664	Agency	FNMA f7/22/15	1.80%	7/22/10	7/22/11	7/22/11	356	100.44	5,000,000
2001570	Treasury Note	USTN	1.28%	6/17/09		8/31/11	396	107.24	5,000,000
2001569	Treasury Note	USTN	1.40%	6/15/09		9/30/11	426	106.97	5,000,000
2001609	Treasury Note	USTN	0.98%	10/27/09		9/30/11	426	100.12	5,000,000
2001600	Treasury Note	USTN	0.96%	10/7/09		11/15/11	472	101.65	5,000,000
2001620	Agency	FFCB cc 12/7/10	1.00%	12/7/09	12/7/10	12/7/11	494	100.00	5,000,000
2001598	Agency	FNMA c 9/23/10	1.30%	9/30/09	9/23/10	12/30/11	517	100.00	5,000,000
2001591	Treasury Note	USTN	1.03%	9/14/09		12/31/11	518	108.12	5,000,000
2001510	Treasury Note	USTN	2.83%	5/1/08		1/31/12	549	106.79	10,000,000
2	Judgments	Judgments	7.57%	2/1/09		1/31/12	549	1.00	5,058,716
2001660	Treasury Note	USTN	0.63%	7/9/10		6/30/12	700	100.00	5,000,000
2001648	Treasury Note	USTN	0.89%	5/11/10		6/30/12	700	108.42	5,000,000
2001668	Agency	FHLB q 7/26/11	0.76%	7/30/10	7/26/11	7/26/12	726	99.99	5,000,000
2001666	Agency	FHLB cc10/27/10	0.88%	7/27/10	10/27/10	7/27/12	727	100.00	5,000,000
2001571	Treasury Note	USTN	1.75%	6/17/09		7/31/12	731	108.70	5,000,000
2001568	Treasury Note	USTN	1.94%	6/15/09		8/31/12	762	106.76	5,000,000
2001601	Treasury Note	USTN	1.33%	10/8/09		9/15/12	777	100.13	5,000,000
2001610	Treasury Note	USTN	1.50%	10/27/09		10/15/12	807	99.63	5,000,000
2001477	Treasury Note	USTN	3.30%	12/12/07		11/30/12	853	100.32	5,000,000
2001618	Agency	FHLB	1.57%	11/20/09		12/14/12	867	100.54	10,000,000
3	Judgments	Judgments	5.25%	1/21/10		1/31/13	915	1.00	1,246,386
2001593	Treasury Note	USTN	1.72%	9/16/09		2/28/13	943	103.43	5,000,000
2001501	Agency	FHLB nc	3.51%	3/28/08		3/8/13	951	101.62	5,000,000
2001520	Agency	FFCB	3.70%	5/9/08		3/25/13	968	99.32	5,000,000
2001597	Agency	FNMA c 9/28/10	2.10%	9/28/09	9/28/10	3/28/13	971	100.00	5,000,000
2001656	Agency	FNMA q 12/28	1.38%	6/28/10	12/28/13	3/28/13	971	100.00	5,000,000
2001669	Treasury Note	USTN	0.82%	7/30/10		4/15/13	989	102.492	5,000,000
2001508	Agency	FNMA nc	4.05%	4/18/08		4/18/13	992	100.00	5,000,000
2001614	Agency	FFCB c 10/29/10	2.06%	10/29/09	10/29/10	4/29/13	1003	99.93	5,000,000
2001582	Treasury Note	USTN	1.86%	7/10/09		6/30/13	1065	105.78	5,000,000
2001665	Agency	FHLMC q 1/26/11	1.30%	7/26/10	1/26/11	7/26/13	1091	100.00	5,000,000
2001572	Treasury Note	USTN	2.21%	6/17/09		7/31/13	1096	104.55	5,000,000
2001590	Agency	FHLB cc 8/19/11	2.76%	8/28/09	8/19/11	8/19/13	1115	99.97	5,000,000
2001595	Agency	FFCB c 9/23/10	2.40%	9/23/09	9/23/10	9/23/13	1150	99.82	5,000,000
2001611	Treasury Note	USTN	1.99%	10/27/09		10/31/13	1188	102.91	5,000,000
2001602	Treasury Note	USTN	1.83%	10/8/09		11/30/13	1218	100.66	5,000,000
2001657	Agency	FHLMC q12/30/10	1.75%	6/30/10	12/31/10	12/30/13	1248	100.00	5,000,000
4	Judgments	Judgments	5.25%	7/15/10		1/31/14	1280	1.00	58,508
2001647	Treasury Note	USTN	2.24%	3/26/10		3/31/14	1339	98.141	5,000,000
2001580	Treasury Note	USTN	2.29%	7/9/09		6/30/14	1430	101.56	10,000,000
2001661	Agency	FFCB cc 7/8/11	1.79%	7/9/10	7/8/11	7/8/14	1438	99.910	5,000,000
2001667	Agency	FHLB q 7/29/11	1.64%	7/29/10	7/29/11	7/29/14	1459	99.925	5,000,000
2001589	Treasury Note	USTN	2.51%	8/25/09		7/31/14	1461	100.53	5,000,000
2001612	Treasury Note	USTN	2.34%	10/27/09		8/31/14	1492	100.16	5,000,000
2001603	Treasury Note	USTN	2.19%	10/8/09		9/30/14	1522	100.87	5,000,000
2001613	Agency	FHLMC 10/28/10	3.02%	10/28/09	10/28/10	10/28/14	1550	99.93	5,000,000
2001616	Agency	FNMA c 10/29/10	3.00%	10/29/09	10/29/10	10/29/14	1551	100.00	5,000,000
2001641	Agency	FHLMC q 8/24/10	3.05%	2/24/10	8/24/10	2/24/15	1669	100.00	5,000,000
2001643	Treasury Note	USTN	2.34%	3/8/10		2/28/15	1673	100.156	5,000,000
2001649	Agency	FHLMC q12/10/10	2.88%	5/11/10	12/10/10	3/10/15	1683	99.971	5,000,000
2001650	Treasury Note	USTN	2.24%	5/11/10		4/30/15	1734	101.219	5,000,000
2001651	Agency	FHLMC q 8/12/10	3.01%	5/12/10	8/12/10	5/12/15	1746	99.950	5,000,000
2001662	Treasury Note	USTN	1.82%	7/9/10		6/30/15	1795	100.242	5,000,000

\$425,416,307.95

Weighted Years to Maturity	1.92
Investments <= 15 Days to Maturity	13.30%
Investments <= 30 Days to Maturity	13.30%
Investments <= 90 Days to Maturity	19.18%
Investments <= 365 Days to Maturity	37.39%

7/31/10 Portfolio Maturity Structure

-53-

