

-2016-

ANNUAL

TULSA PARK AND RECREATION DEPARTMENT

REPORT

TULSA  PARKS

TABLE OF CONTENTS

2016 TULSA PARK AND RECREATION ANNUAL REPORT

Prepared by:
Tulsa Park and Recreation Department
City of Tulsa Communications Department

www.tulsaparks.org
www.cityoftulsa.org



OUR VISION	01
OUR MISSION	02
DIRECTOR'S LETTER	03
2016: THE BIG PICTURE	05
PARKS FUN FACTS	15
OUR BUDGET	17
OUR PARTNERSHPS	19
CAPRA CERTIFICATION	21
PROJECTS & IMPROVEMENTS	23
BISCUIT ACRES DOG PARK	25
HOWARD PARK & ROUTE 66	27
OXLEY NATURE CENTER	29
CHALLENGER 7 COMMUNITY GARDEN	31



1

OUR VISION

To create a quality park system that meets the community's need for recreation and learning opportunities to benefit health and well-being.

OUR MISSION

The mission of the Tulsa Park and Recreation Department is to provide and preserve quality parks and recreation opportunities for all.

2



- LUCY DOLMAN, TULSA PARK AND RECREATION -

DIRECTOR'S LETTER



Dear Citizens of Tulsa:

It is with great pleasure that Tulsa Parks presents our first Annual Report. This report highlights our work since creating our Parks Master Plan in 2010.

We have provided parks programs, services and new projects by being more creative and efficient in our practices and business solutions, and through sheer determination, to give Tulsans the park system they deserve.

As a result, 2016 may go down as one of the most remarkable years in the Tulsa Park and Recreation Department history. Following years of planning and discussion with the community, we proudly and successfully established new improvements to Springdale and BC Franklin Parks. We are equally proud of a host of new improvements to many of your Tulsa parks as highlighted in this report.

During 2017, we will continue to provide a park department that is a source of pride and enjoyment for all Tulsa citizens. We are committed to fulfilling our mission of providing and preserving quality parks and recreation opportunities for all. Our newly accredited CAPRA status strengthens our obligation to provide a quality park service for our citizens.

We hope you enjoy reading about your Park and Recreation Department activities from 2016, a truly historic and memorable year!

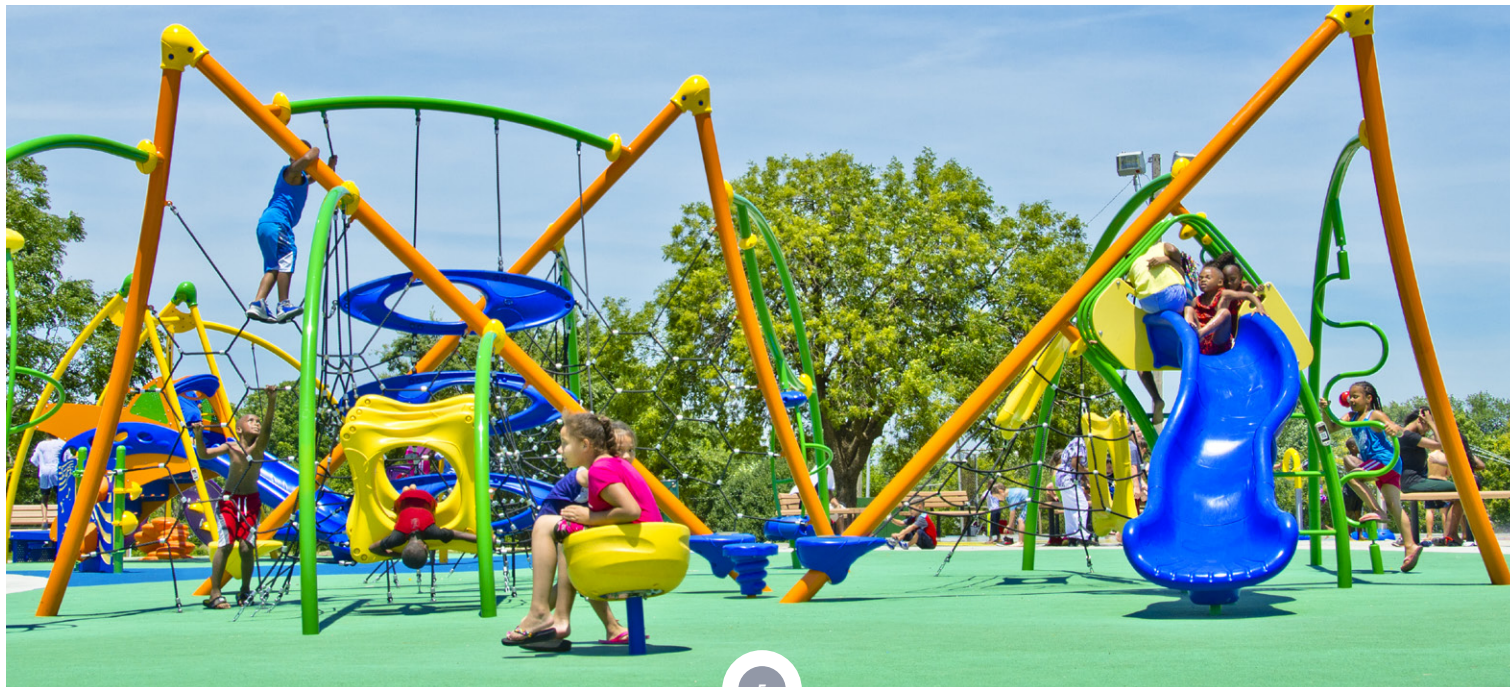
In addition to the support of the Tulsa Park Board, the Mayor and all other City Departments, we'd like to thank you for your unending support of our programs and services.

Sincerely,

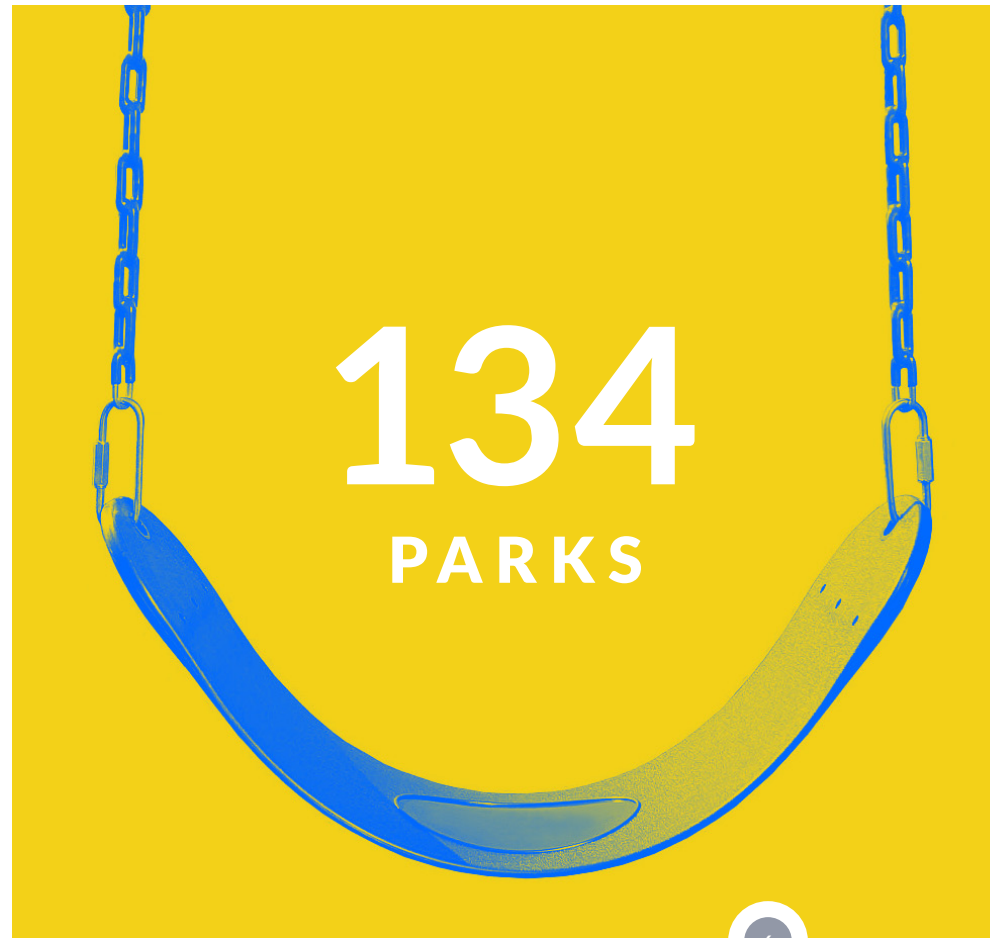
A handwritten signature in black ink that reads "Lucy Dolman". The signature is written in a cursive, flowing style.

- SECTION 1 -

2016: THE BIG PICTURE



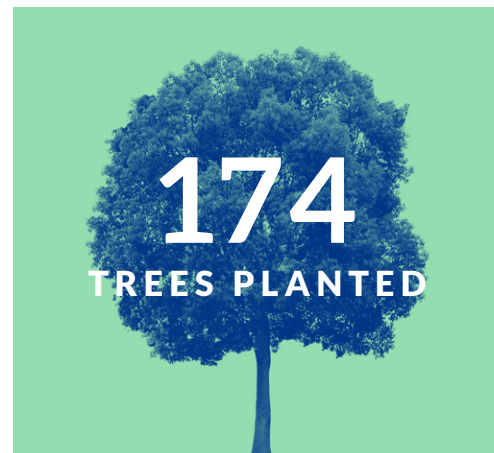
5



134
PARKS

6

8,278
PARK ACRES



174
TREES PLANTED

66

MILES OF TRAILS

\$272,378

IN DONATIONS

1,040+
VOLUNTEERS

7

614

RECREATION
PROGRAMS

1,765

DAY CAMP
REGISTRATIONS



8



2,996
SPORTS LEAGUE REGISTRANTS



15,369
FITNESS ROOM
ATTENDEES

1,478
FITNESS AND WELLNESS
REGISTRATIONS

42,428
AQUATICS ATTENDEES



222
SWIM LESSON SIGN-UPS

11



24
NATURE
PROGRAMS

12

1,879
NATURE PROGRAMS
REGISTRATIONS

2,136
STUDENTS GIVEN
A NATURE TOUR

475

SPECIAL EVENT RENTALS



290

INDOOR FACILITY RENTALS

121

INSTANCES OF GRAFFITI REMOVAL

737

SHELTER RENTALS

570

OUTDOOR FACILITY RENTALS

* AQUATICS, SPORTS FIELDS, SPORTS COURTS, ETC



PARKS FUN FACTS

OWEN

TULSA'S OLDEST PARK

1909

TULSA'S PARK COMMISSION
IS ESTABLISHED

1927

MOHAWK PARK OPENS
(FEES WERE ONLY \$.50/DAY!)



1934

MOHAWK PARK SERVES
AS A CCC* SITE

* CIVILIAN CONSERVATION CORPS

1982

"THE OUTSIDERS" FILMS
IN CRUTCHFIELD PARK

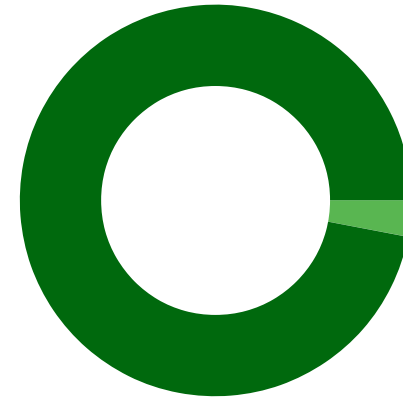
COUSINS

TULSA'S NEWEST PARK

- SECTION 3 -
OUR BUDGET

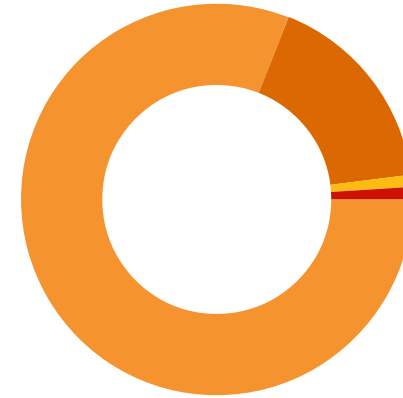


CITY OPERATING BUDGET



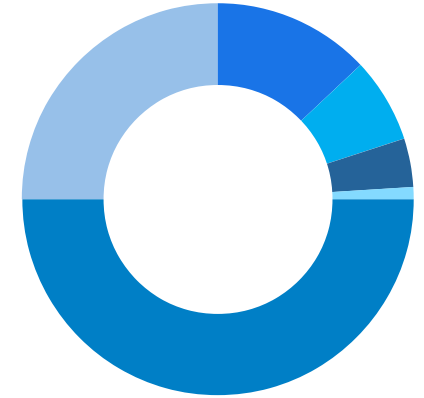
- 97.1% - All Other Depts.
- 2.9% - Parks Dept.

WHERE IT COMES FROM



- 81% - General Fund
- 16.5% - Golf Course Operating Fund
- 1.5% - Short-Term Capital
- 1% - Stormwater Mgmt. Enterprise Fund

WHERE IT GOES



- 49.7% - Partnerships
- 24.6% - Maintenance and Setup
- 13.2% - Recreation Programs and Centers
- 6.6% - Utilities
- 4.4% - Administration
- 1.5% - Short-Term Capital

OUR PARTNERSHIPS



- HILLCREST HOSPITAL
- BILLY CASPER GOLF
- TULSA CHILDREN'S MUSEUM
- CLARK THEATRE
- CROSSOVER COMMUNITY IMPACT
- TULSA SPORTS COMMISSION
- TULSA ZOO MANAGEMENT
- FIRST TEE
- GARDEN CENTER
- TULSA GLUEDOBBER
- GREENWOOD CULTURAL CENTER
- LAND LEGACY
- QUARTER MIDGETS
- TULSA GUN CLUB
- FRIENDS OF OXLEY
- LINNEAUS TEACHING GARDEN
- PARK FRIENDS
- TULSA PUBLIC SCHOOLS
- TULSA FOUNDATION FOR ARCHITECTURE
- UNION YOUTH BASEBALL
- TULSA GIRLS SOFTBALL FEDERATION
- TULSA AMATEUR SOFTBALL ASSOCIATION
- JENKS YOUTH BASEBALL

CAPRA CERTIFICATION



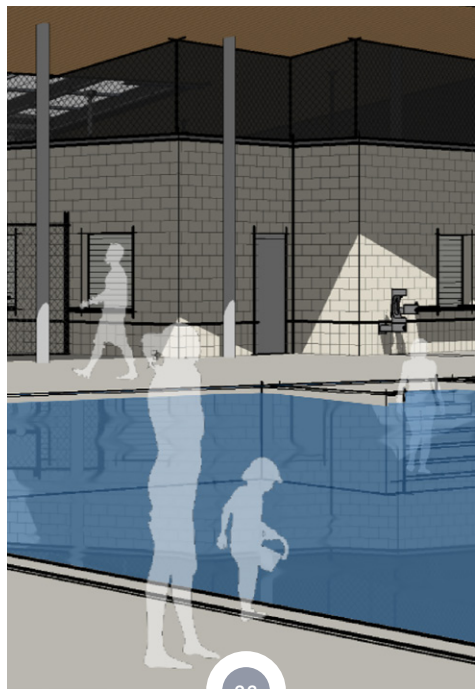
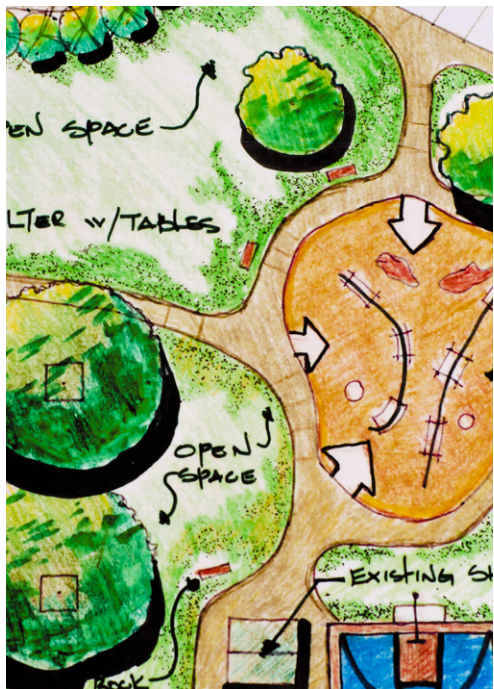
The Commission for Accreditation of Park and Recreation Agencies (CAPRA) accredits park and recreation agencies that demonstrate excellence in operations and service. Charged with

providing high-quality services and experiences, park and recreation agencies across the United States turn to CAPRA Accreditation as a credible and efficient means of achieving these goals while providing assurance to the public that the agency meets national standards of best practices.

In October 2016, the Tulsa Park and Recreation Department was awarded accreditation by the Commission for Accreditation of Park and Recreation Agencies (CAPRA), making Tulsa Parks the first city

park system in Oklahoma to become accredited. Accreditation is based on an agency's compliance with the 151 standards for national accreditation. To achieve accreditation, an agency must comply with all 37 fundamental standards and 103 of the 114 non-fundamental standards. It is based on a five-year cycle that includes an agency self-assessment, an onsite visitation, and the Commission's review and decision. Only 152 agencies out of 10,000 agencies across the United States have achieved this status. At Tulsa Parks, we are proud to be among such few accredited agencies and the only accredited agency in Oklahoma.

PROJECTS & IMPROVEMENTS



SPRINGDALE

- + Water Playground
- + Playground
- + Shelter
- + Sidewalks

TRACY PARK

- + Tennis Courts

GRAHAM PARK

- + Tennis Courts

BC FRANKLIN

- + Themed Playground
- + Sports Courts
- + Outdoor Gym
- + Shelter
- + Trail

COWAN PARK

- + Playground Improvements

ZINK PARK

- + Playground Improvements

LOVING PARK

- + Playground Improvements

VETERANS PARK

- + Playground Improvements

NEWBLOCK PARK

- + Playground Improvements

LACY PARK

- + Phase 1 of Master Plan under construction
- + Water Playground and Playground Designs
- + Pool redesign

PAGE BELCHER GOLF COURSE

- + Clubhouse Improvements

MOHAWK GOLF COURSE

- + Clubhouse Improvements

CRAWFORD PARK

- + Playground Improvements

HUNTER PARK

- + Playground Improvements

MCCLURE PARK

- + New Pool Construction

WOODWARD PARK

- + Peggy Helmerich Classroom Building

MOHAWK PARK

- + Equestrian Trails

PLUS:

- + 25+ Playgrounds Mulched
- + 38 New Park Signs Installed to Date

BISCUIT ACRES DOG PARK



Biscuit Acres Tulsa Dog Park is a very successful private/public partnership between the Tulsa Park & Recreation Department and dog owners. The park, located in Hunter Park, is managed by the Biscuit Acres Volunteer Association (BAVA) and offers two separately fenced areas for large and small dogs, doggie drinking fountains and every pooch's favorite amenity, a fire hydrant.

In 2016, BAVA sodded 1,600 square feet of land at the park entrance and funded fertilization of the entire park. To enhance the shade at the dog park, eight trees were planted and a new shade sail is currently under construction.

BAVA is composed of nine board members, 25 at large members, and numerous volunteers who take care of all routine maintenance, such as daily stocking of plastics

bags, poop pickup and disposal, filling holes, edging and weed control, cleaning benches and tables, moving garbage cans to the curb for City pickup, maintenance of park structures, spreading mulch and dirt and other projects as needed.

BAVA spent \$13,300 on the dog park in 2016, funded by two major fundraisers - their anniversary event and the annual Pancakes for Pooches.

Biscuit Acres opened in 2009 and the number of dogs and their owners who visit, persistently break attendance records. The Park operates through private funding with oversight from the Park and Recreation Department. Biscuit Acres is a premier destination for both dogs and their owners.

HOWARD PARK & ROUTE 66



Declared a historic Route66 park in 1991, Howard Park recently installed a new modern playground, donated by Holly Refinery, offering new outdoor exercise facilities, improved safety and accessibility. Vision2025 Route 66 enhancement resources were also used to replace a wooden park sign with a beautiful stone-crafted monument representing the renowned highway shield and insignia that marks historic Route66.

With additional Vision2025 resources, artist Patrick Sullivan created Indiana limestone monoliths depicting Tulsa's contribution to American Indian culture during the Route66 era. Standing in heights of nearly 10 feet with a four-foot surface area, the 12 sides of hand-chiseled artistry commemorates themes from the topics of transportation, industry, Native American culture, Art Deco architecture and American culture.

The park's newest amenity will create a destination for local historian and education groups as well as for national and international tourists.

OXLEY NATURE CENTER



Oxley Nature Center and Redbud Valley Nature Preserve make up a little more than 1,000 acres of Tulsa Parks with 11 miles of hiking trails. Oxley and Redbud Valley comprise the best urban wilderness in Oklahoma. It is an annual destination for nearly 40,000 birders, photographers, hikers, students, wildlife watchers, and those seeking the peace and solitude only nature can provide.

Visitors participate in educational programs, such as basket making, birding, butterfly watching, edible and medicinal wild plants, solving the “Mysterious Riddle of the Woods,” and guided nature walks, including the popular Full Moon Walks. This year, 52 people hiked with naturalists on the night of the Super Moon.

Nature’s fury visited Oxley earlier this spring in the form of an F3 tornado. The tornado tore a 75-yard path through heavily wooded areas of nearly three miles. Heavily used trails were closed for weeks until huge cottonwood and walnut trees could be removed for the safety of patrons. The trails became destinations as visitors wanted to see the power of a tornado in person. This year also marked the near completion of the Monarch Milkweed Garden to help boost the waning Monarch population due to hungry caterpillars stripping the leaves clean of 90 milkweed plants.

From birds to butterflies, to beavers to botany, Oxley Nature Center and Redbud Valley are full of the earth’s natural treasures. If you’ve never visited, please take a moment to visit one of Tulsa’s gems.

CHALLENGER 7 COMMUNITY GARDEN



Former Tulsa first lady Victoria Bartlett helped create The “Growing from Roots” initiative in 2012 as a means to promote a healthier Tulsa. Originally partnering with the OSU Extension office, Tulsa Parks filled in the pool at Challenger 7 Park to make way for a community garden and food forest.

Under the leadership of Cathy Chenoweth and Karen Nelson, a variety of groups have helped tend the garden, including: Berryhill High School students, the West Sertoma youth group, Tulsa Chapter of STAR Touring and Riding, CUNU Youth Group, and the Victory Girls garden club. The OSU Extension Center provided equipment, expert advice, and volunteers. More than 453 volunteer hours were tracked in 2016.

In addition, The Tulsa Health Department and Green Country Permaculture have partnered to write a grant to install a food forest at the park which will be another addition to the community garden.

The harvest for 2016 included: tomatoes, okra, green peppers, radishes, yellow squash, basil, cabbage, broccoli, kale, turnips, onions, garlic, and more.

The community garden and food forest will help build a more resilient community by bringing healthier food options to the food desert in the Red Fork area of Tulsa. The project provides a learning space for nutritional education, sustainability and resilience, all while fostering new and lasting bonds between the City of Tulsa and southwest Tulsa.



CITY OF
Tulsa
A New Kind of Energy.