



Tulsa City Council

March 22, 2023

"To serve our communities' pre-hospital needs through value-driven, compassionate, and clinically superior care."

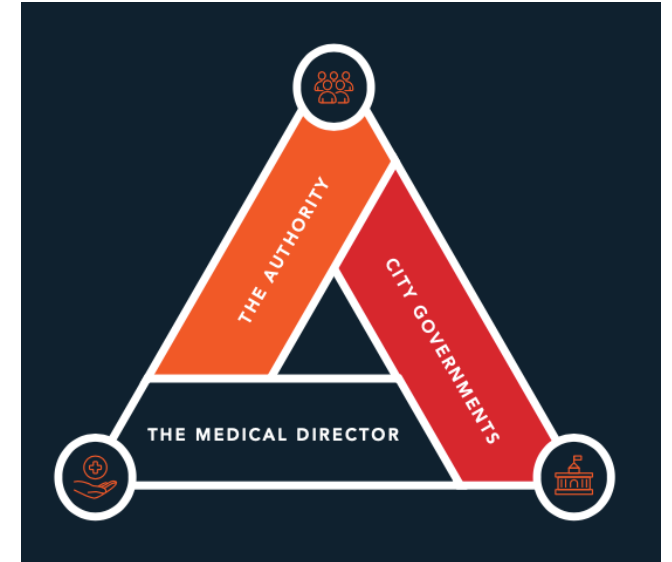
EMSA Organizational Overview

EMSA is an Oklahoma Public Trust Authority

- Trust Beneficiaries – City of Tulsa and City of Oklahoma City

Independent Medical oversight by MCB/CMO as established by the EMS Interlocal Agreement

- Establish System Standards of Care for EMSA and for first response agencies within EMSA's regulated service area.
- Field Operations and Dispatch Operations



"To serve our communities' pre-hospital needs through value-driven, compassionate, and clinically superior care."

Organizational Accreditation

Commission On Accreditation of Ambulance Services (CAAS)

- An independent commission established to promote quality patient care across the EMS transport industry.
- Accredited agencies meet or exceed a comprehensive series of standards for the ambulance service industry.
 - More than across 140 standards across 4 key accreditation sections
 1. Organization (Administration, Management, HR, etc.)
 2. Clinical Standards and Education
 3. Operations
 4. Special/Other Services (9-1-1 Centers, Specialty Care Transport, etc.)



"To serve our communities' pre-hospital needs through value-driven, compassionate, and clinically superior care."

Organizational Accreditation

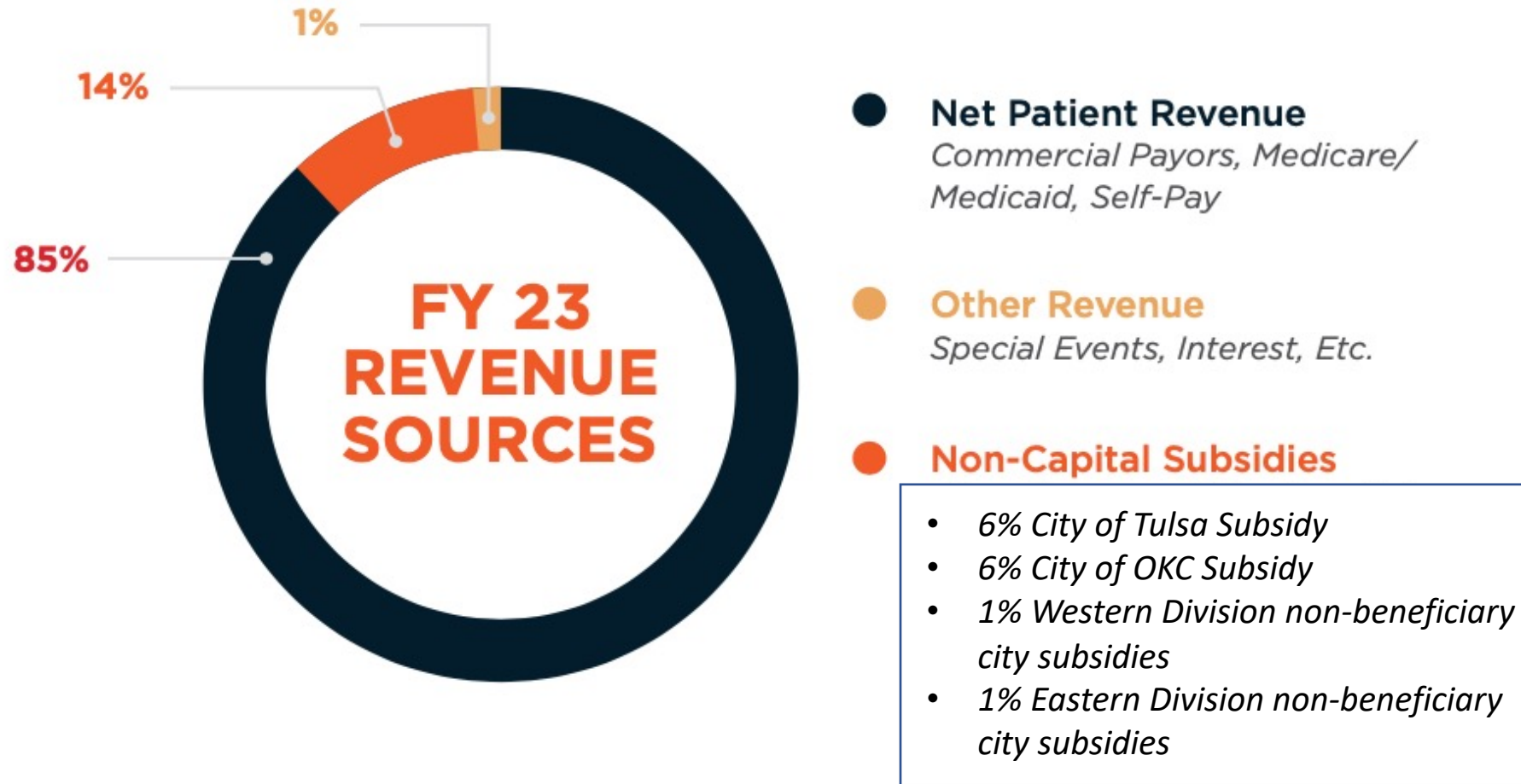
International Academies of Emergency Dispatch - Accredited Center of Excellence (ACE)

- ACE accreditation ACE promotes organizational excellence in public safety communications by encouraging committed agencies to meet 20 Points of Accreditation standards
- The ACE accreditation process and the associated Advanced Medical Priority Dispatch protocols are supported by: National Association of EMS Physicians (NAEMSP), ASTM International, the American College of Emergency Physicians (ACEP), the U.S. Department of Transportation (USDOT), the National Institutes of Health (NIH), and the American Medical Association (AMA).



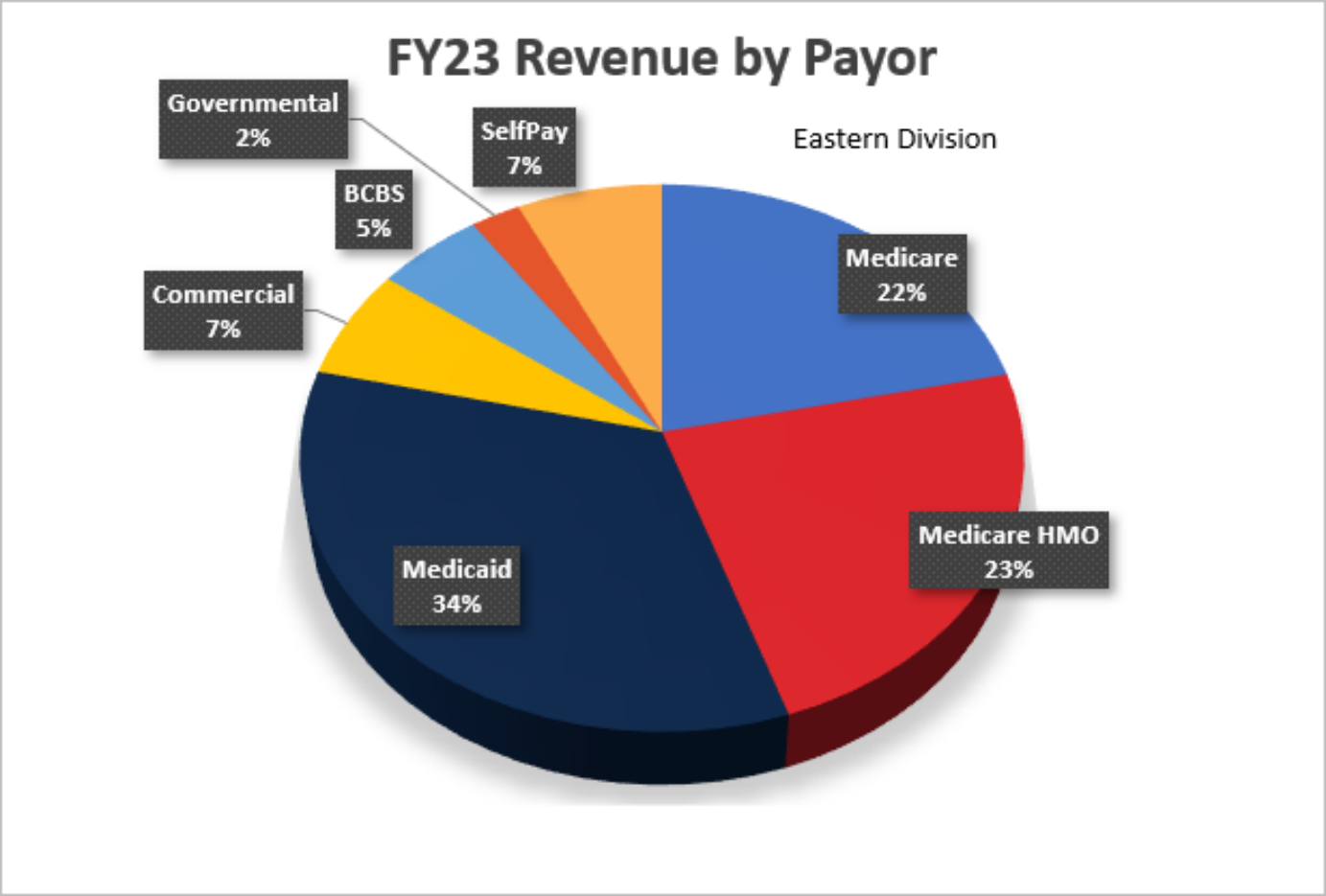
"To serve our communities' pre-hospital needs through value-driven, compassionate, and clinically superior care."

EMSA Funding Model



“To serve our communities’ pre-hospital needs through value-driven, compassionate, and clinically superior care.”

FY23 Net Patient Revenue Breakdown



“To serve our communities’ pre-hospital needs through value-driven, compassionate, and clinically superior care.”

City of Tulsa EMSA Annual Subsidy

How is the EMSA subsidy calculated?

- EMSA determines the difference between projected revenue and the operating and capital needs in the Eastern Division for upcoming fiscal year.
- The funding difference is cured by subsidy payments through each city's Rate Stabilization Fund (EMSACare collections).
- Each municipality's share of the total Eastern Division subsidy is determined by population.
- The subsidy amount is a projection.

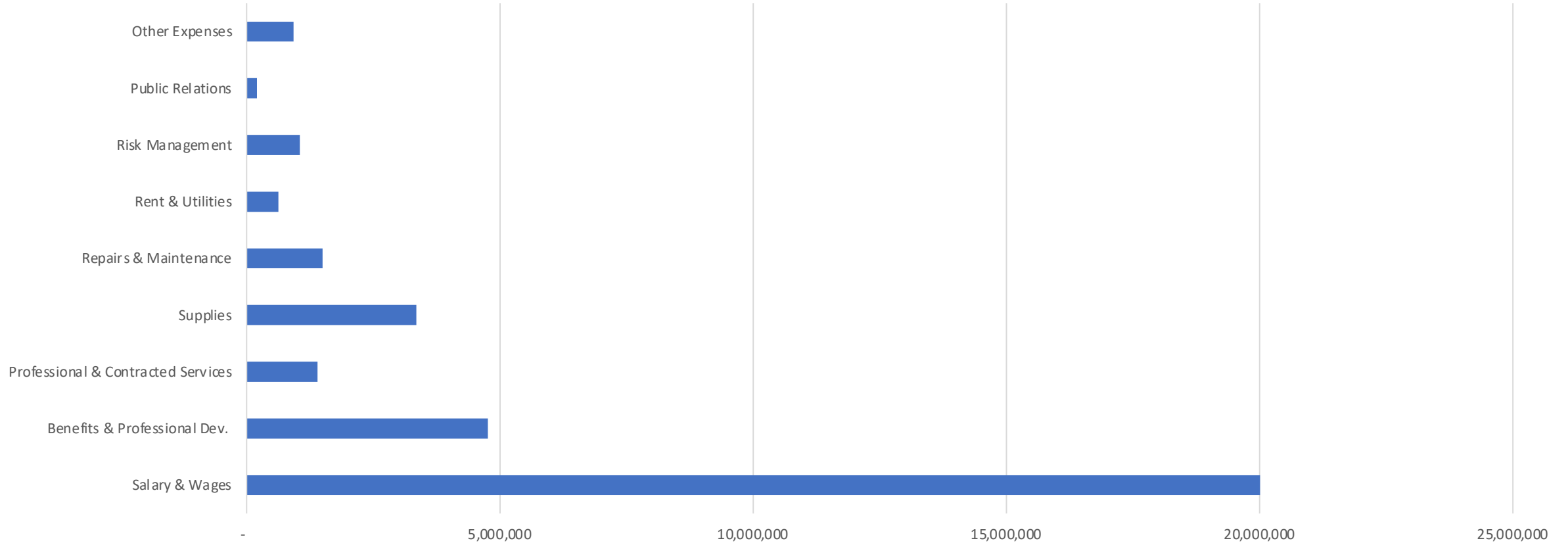
Fiscal Year	City of Tulsa Subsidy Amount
2023	\$4,800,000- <i>Projected</i>
2022	\$4,800,000
2021	\$4,700,000
2020	\$4,398,000
2019	\$4,597,000
2018	\$6,296,000
2017	\$4,458,000
2016	\$4,122,000
2015	\$4,626,000
2014	\$5,566,000



"To serve our communities' pre-hospital needs through value-driven, compassionate, and clinically superior care."

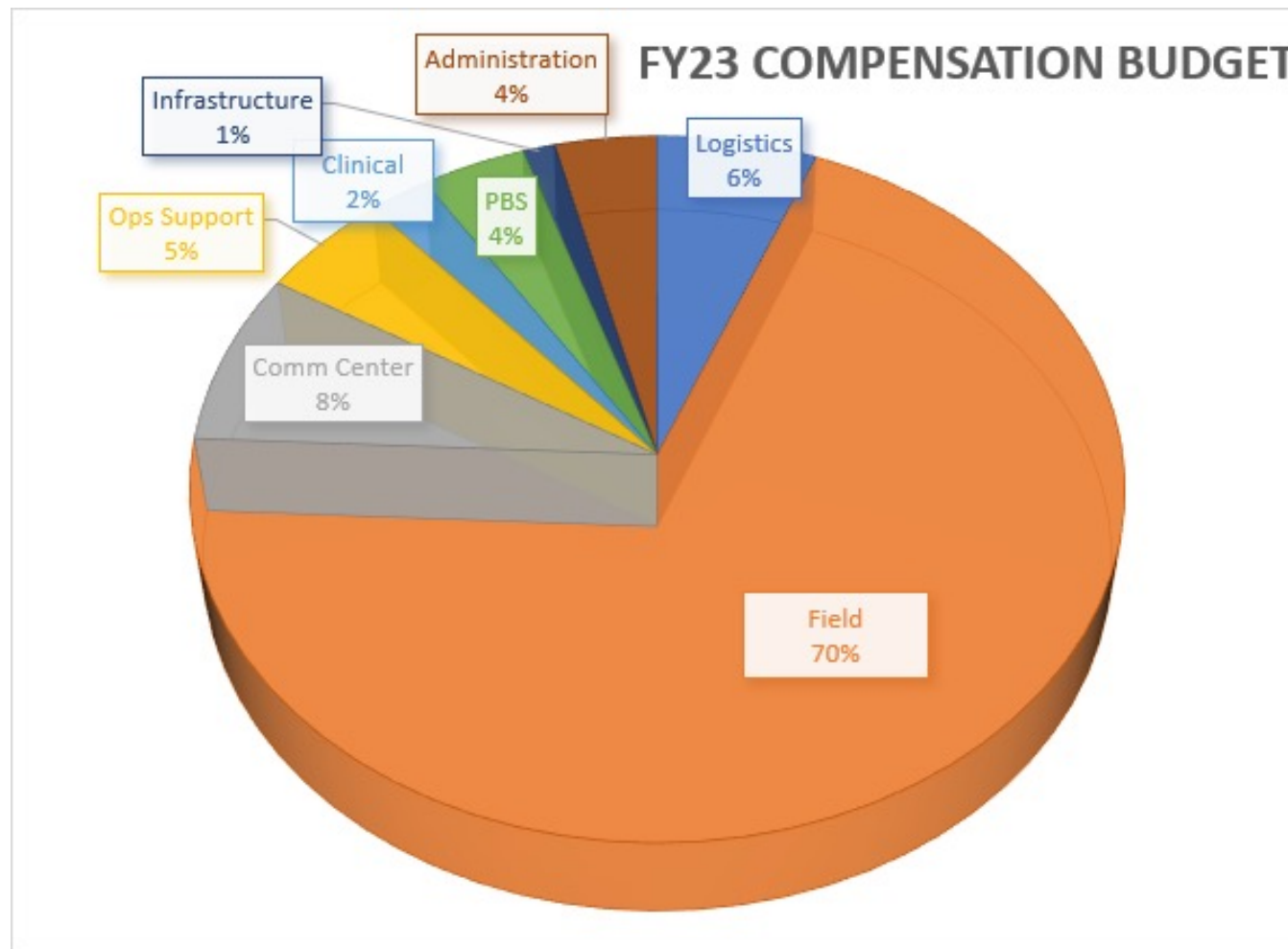
FY23 Operating Budget

FY23 Budget Eastern Division



“To serve our communities’ pre-hospital needs through value-driven, compassionate, and clinically superior care.”

FY23 Compensation Budget



“To serve our communities’ pre-hospital needs through value-driven, compassionate, and clinically superior care.”



Overview

EMSACare covers all out-of-pocket costs for members after emergency transports

- Emergency transport = transport ending at a hospital ER
- \$9.5million in EMSA charges written off in FY22 as part of the EMSACare program in the Eastern Division

Two options for EMSACare participation

- City of Tulsa utility customers - \$5.45/month on City Utility Account
 - Funds collected stay in City's Rate Stabilization Fund
- Direct EMSACare Subscribers - \$65 annual subscription with EMSA

Currently 73.60% of Tulsa's Single-Family Residences are opted-in

- Customers can enroll when they create their COT Utility Account
- Customers have opportunity to opt-in or opt-out each August



"To serve our communities' pre-hospital needs through value-driven, compassionate, and clinically superior care."



Overview Continued

Multi-tenant residential signup options

- Sign up with directly with EMSA if landlord has opted out of enrollment
 - City code requires tenant acknowledgement of non-EMSAcare participation
- Enrolled via their landlord's COT Utility Account

For EMSAcare members- EMSA waives any medical expenses associated with the transport net of applicable insurance or governmental payment (i.e. Medicare, VA, etc.).

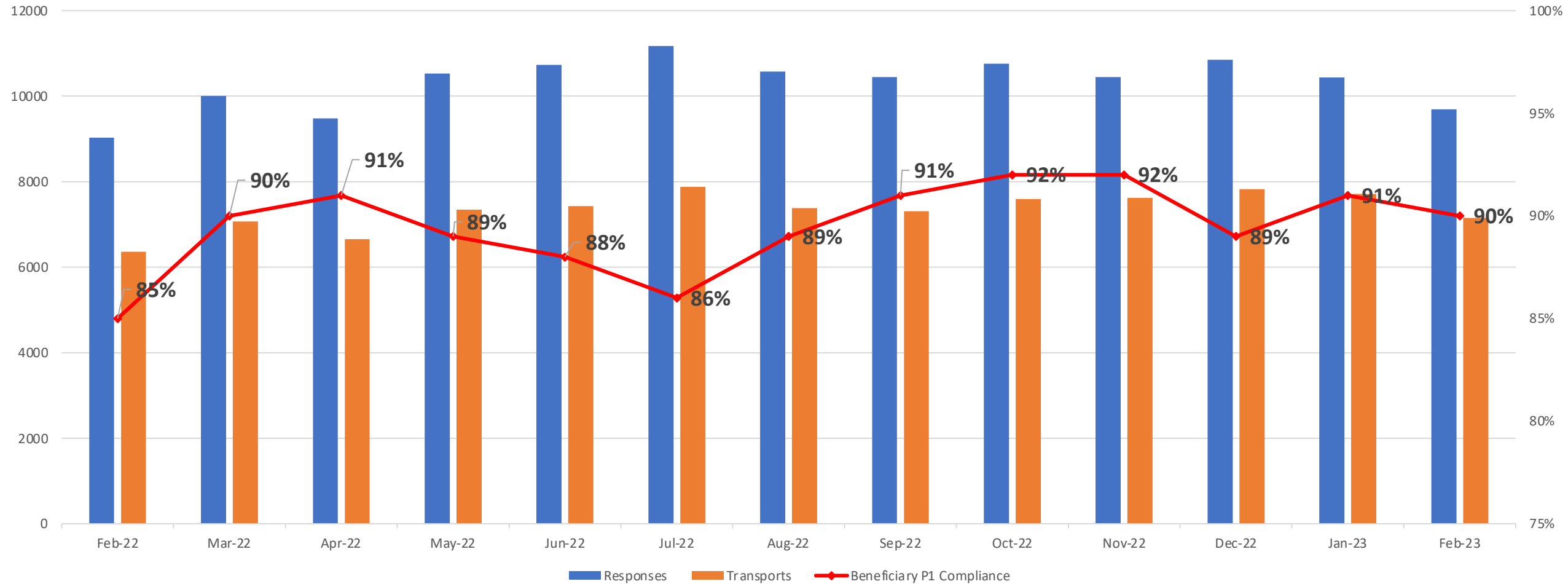
If an EMSAcare member is transported via mutual aid, EMSA pays the patient's transport costs net of insurance or applicable governmental payments.



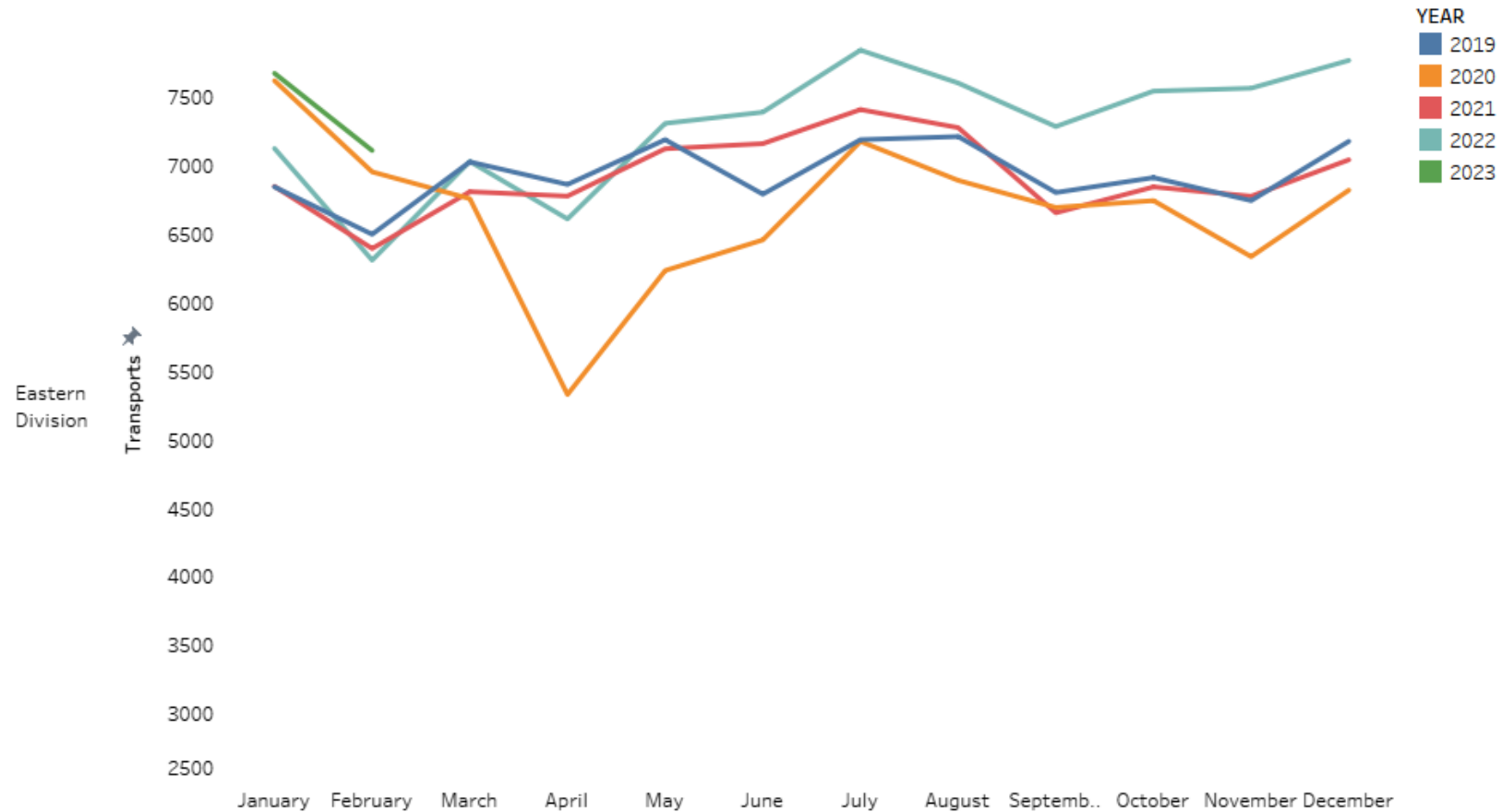
"To serve our communities' pre-hospital needs through value-driven, compassionate, and clinically superior care."

P1 Compliance Trends – EASTERN DIVISION

East Beneficiary Response Time Compliance with Response and Transport Totals



Five Year Volume Trends – Eastern Division



“To serve our communities’ pre-hospital needs through value-driven, compassionate, and clinically superior care.”