

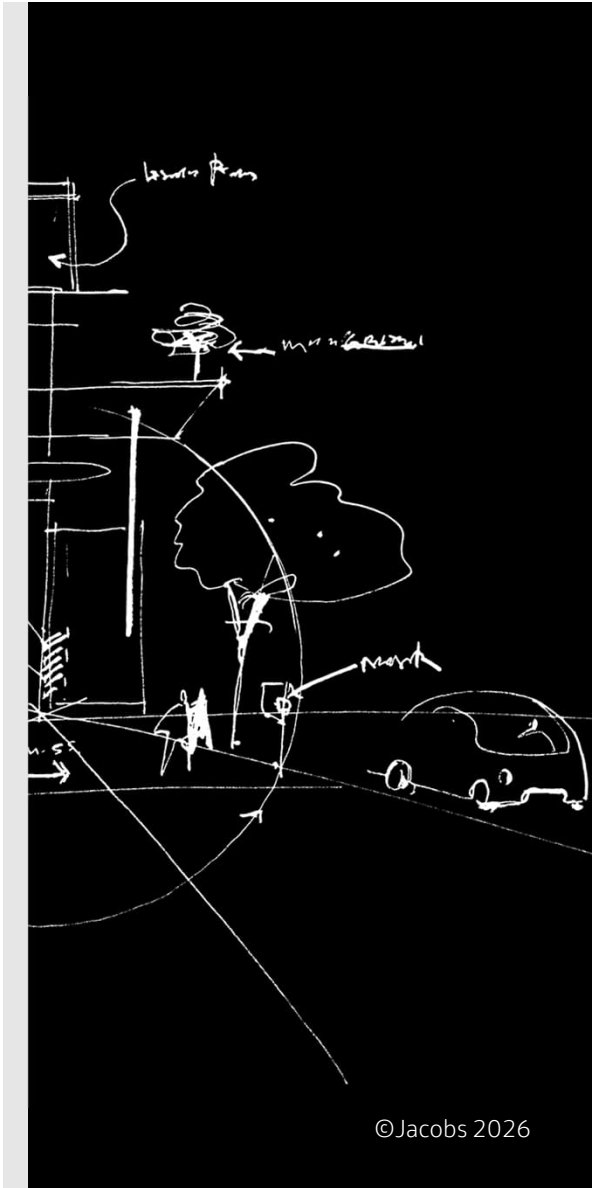


Challenging today.
Reinventing tomorrow.

Bixby Sewer Connection Evaluation

Regional Metropolitan Utility Authority

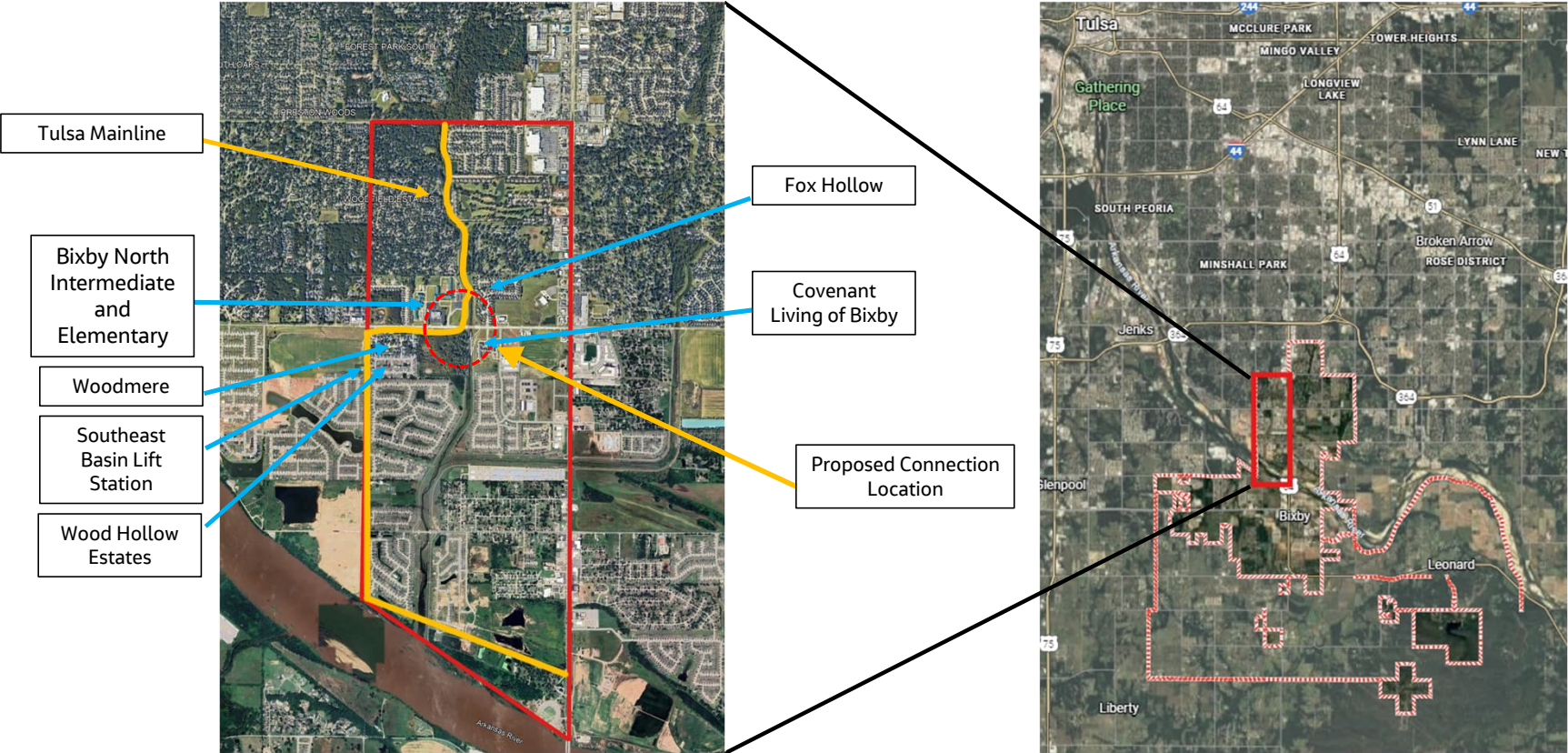
-
- Background
 - Study Location
 - Alternatives
 - Discussion



Background and Purpose

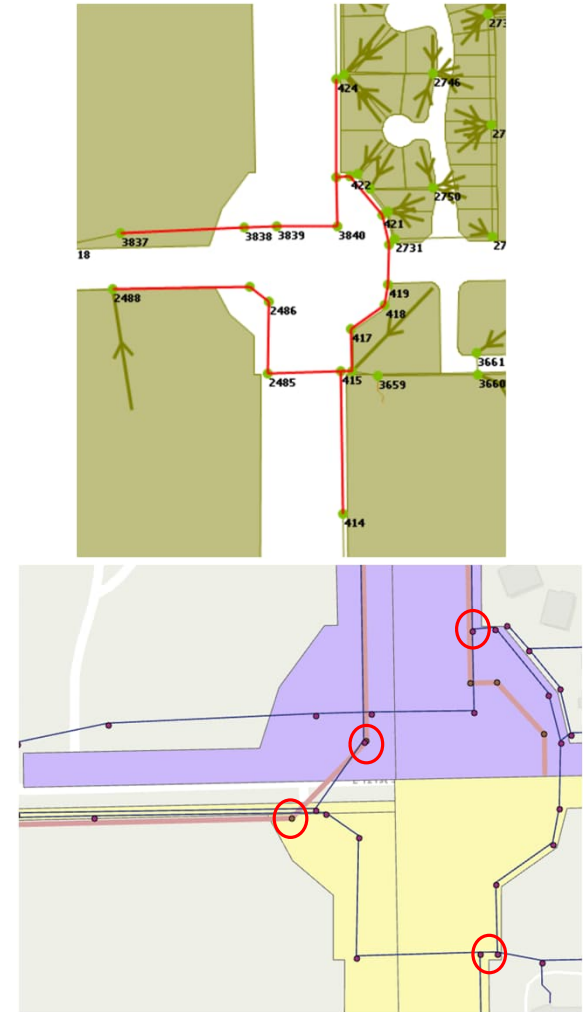
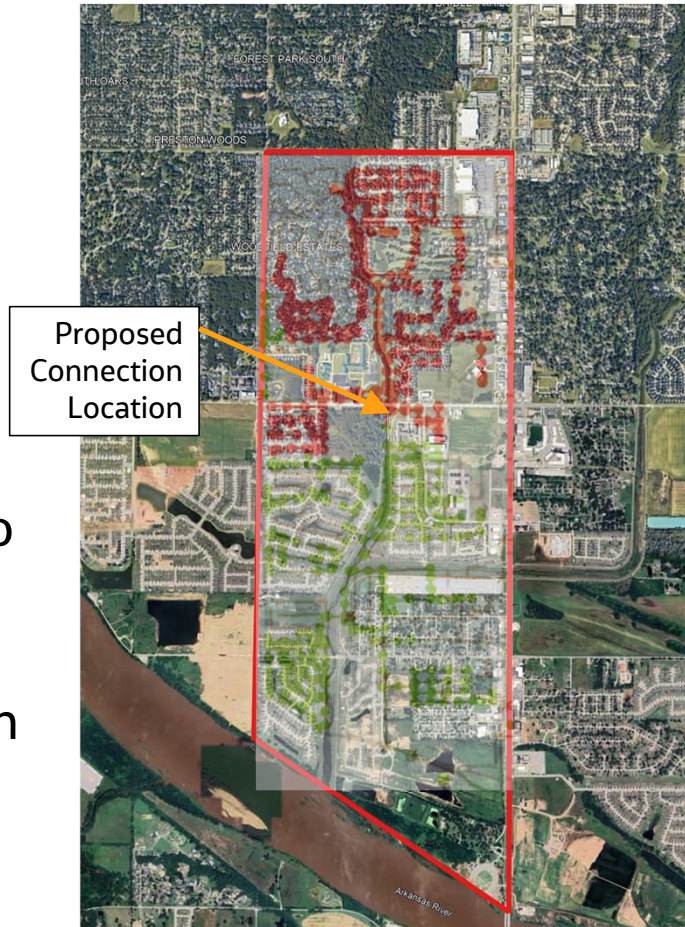
- Bixby Water Reclamation Facility is nearing capacity (2.8 MGD)
- Bixby is exploring options to increase capacity at the facility and/or connect to Haikey Creek WWTP, but these will take significant time
- The alternatives presented today are short term solutions to relieve the plant until long term agreements can be determined.
- The purpose of the presentation is to inform RMUA stakeholders of this potential connection between City of Bixby and TMUA

Study Location



Study Location

- Using sewer model developed by Freese and Nichols, collections systems were divided into neighborhoods
- Peak dry weather flow from neighborhoods ranges from 0.004 MGD to 0.20 MGD
- Red dots in the image represent the area that can be captured



Alternative 1

- Total Peak DWF = 0.3 mgd
- Total Peak WWF (5-yr) = 1.4 mgd
- Approx 410 LF crossing (red arrow)
- Must cross Fry Ditch & gravel trail
- S side of 121st St
- Appears to be within Bixby ROW
- Tie-in point near power pole
- City of Tulsa confirmed the Southeast Basin Lift Station is currently available to receive 0.4 MGD dry-weather and 1.4 MGD of peak wet-weather flows

Proposed
Connection
Location

Tulsa
Main



Alternative 1



Alternative 2

- Total Peak DWF = 0.3 mgd
- Total Peak WWF (5-yr) = 1.2 mgd
- Approx 275 LF crossing (red arrow)
- Must cross Fry Ditch & gravel trail
- Tie-in point close to creek
- N side of 121st St
- Appears to be within Bixby ROW and drainage easement

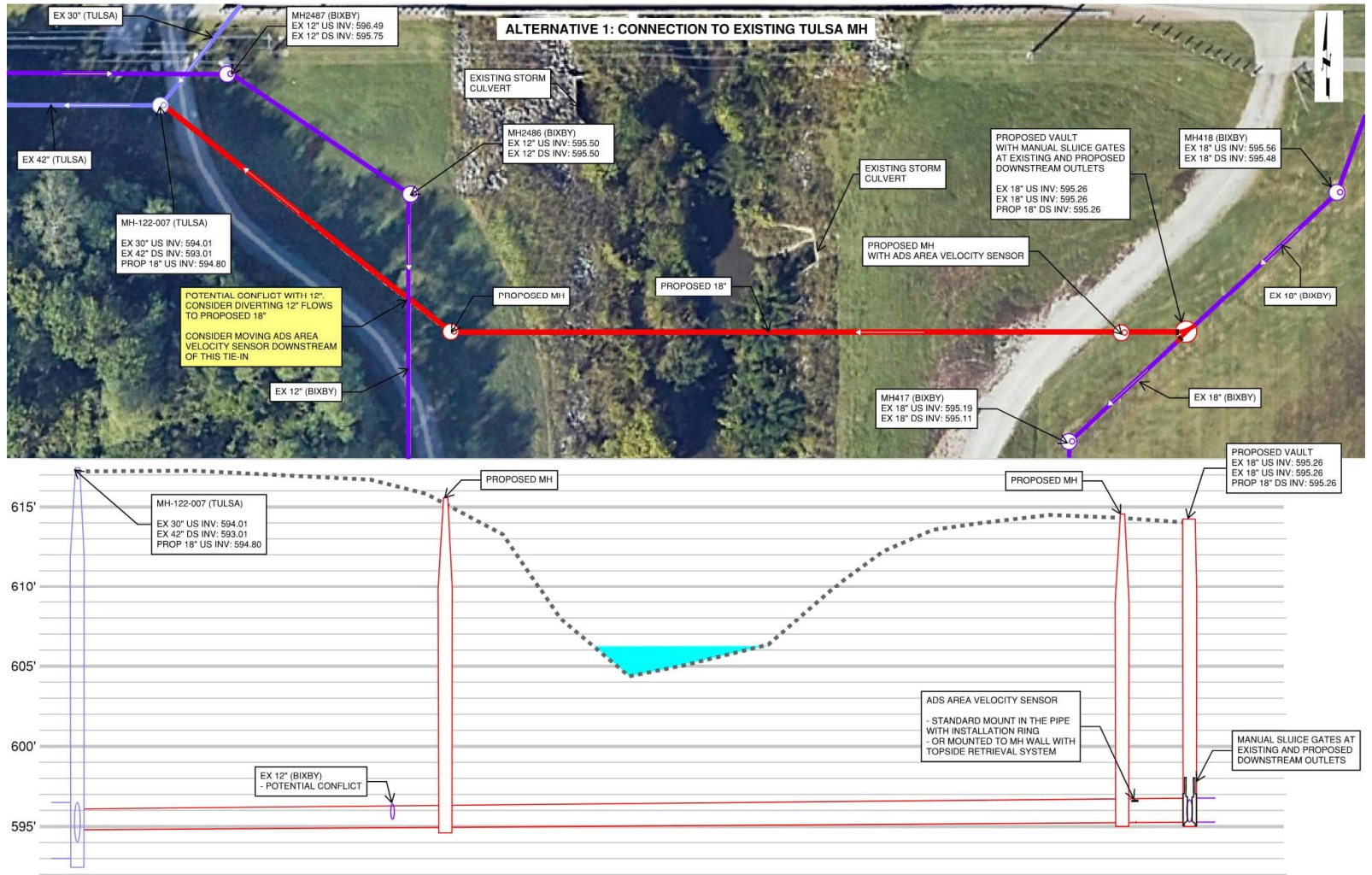
Proposed
Connection
Location



Alternative 2



Alternative 1



Thank you

Copyright notice

Important

© Copyright Jacobs 2026. All rights reserved. The content and information contained in this presentation are the property of the Jacobs Group of companies ("Jacobs Group"). Publication, distribution, or reproduction of this presentation in whole or in part without the written permission of Jacobs Group constitutes an infringement of copyright. Jacobs, the Jacobs logo, and all other Jacobs Group trademarks are the property of Jacobs Group.

NOTICE: This presentation has been prepared exclusively for the use and benefit of Jacobs Group client. Jacobs Group accepts no liability or responsibility for any use or reliance upon this presentation by any third party.

