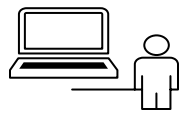
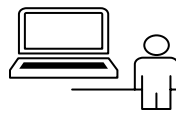
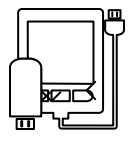
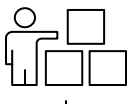


New Software Request

New Data Request

Data Quality Issue

Adjust Dataset Permission



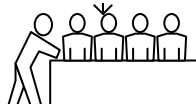
Assign the Data Steward An Approval Task

Steward responds within three days.

Approval Task Assigned to Data Manager

Approve Request

Data Steward Calls a Meeting to discuss the request.



Data Governance Committee Review

Request Approved by Majority or no majority is met within three days.

Reason for rejection communicated to request owner

Type

Architect and or ETL Review Issue

Can the issue be fixed?

Solution is documented by Architect SME ETL

Is a data schema provided?

Architect/Data Modeler reverse engineers data schema

ETL Reviews Data Request and Extracts Data with sensitive data masked.

Data Requestor Approves Data

Data Steward Reviews Dataset and the previous classification.

Data Steward adjusts permissions in classification form.

ETL Team Applies Adjusted Permission

Data Steward Classifies Full Dataset

Data Steward verifies specific data permissions are assigned correctly.

Meta Data and Tags are stored in Dremio

ETL moves data to the folder with the correct permissions and classification

Public

Sensitive

Protected

Department

Department

Department

Application

Application

Application

Identifier

Identifier

Identifier