



## FAX TRANSMITTAL

Date: January 5, 2021

To: Plan Holders

Company: Contractors

Number of Pages: 27 (Including Cover)

From: Anika Ture - Contract Administration  
Telephone No. 918-596-9637  
Fax No. 918-699-3470  
Email – [ature@cityoftulsa.org](mailto:ature@cityoftulsa.org)

RE: PROJECT NO. 148170, C4 RIVERWEST PHASE III & IV  
NEIGHBORHOODS INITIATIVE

### **ADDENDUM NO. 2**

Please fax or email a signed cover sheet 918-699-3470 to or [jiten@cityoftulsa.org](mailto:jiten@cityoftulsa.org) as acknowledgement of receipt.

Thank you,

\_\_\_\_\_  
Signature

\_\_\_\_\_  
Company

\_\_\_\_\_  
Date



## ENGINEERING SERVICES DEPARTMENT

January 5, 2021

**ADDENDUM NO. 2  
TO  
PROJECT NO. 148170, C4 Riverwest Phase III & IV  
Neighborhoods Initiative**

This Addendum No. 2 consisting of (1) item, submitted by City of Tulsa, and (17) items, submitted by Wallace Engineering, is hereby made a part of the Contract Documents to the same extent as though it were originally included therein, and shall supersede anything contained in the Plans and Specifications with which it might conflict. **This entire Addendum shall be attached to the Index Sheet of the Contract Documents, recorded on Page 7a of the proposal, and submitted with bid. Failure to do so shall result in the bid being deemed non-responsive.**

This Addendum No. 2 consists of the following:

1. "HOUSING AUTHORITY OF THE CITY OF TULSA, A PUBLIC BODY CORPORATE AND POLITIC" SHALL BE SHOWN AS ADDITIONAL INSURED ON ALL INSURANCE CERTIFICATES FOR THIS PROJECT.
2. The attached documents list the detail items that have been modified in Addendum No. 2. These documents shall be inclusive and apply to this project.

All other provisions of the Plans and Specifications shall remain in full force and effect.

**CITY OF TULSA**

*Per*   
Paul D. Zachary, P.E.  
City Engineer

  
HAS/BC/AT/ji



January 4, 2021

**ADDENDUM NO. 2  
TO  
RIVER WEST PHASE CNI PHASE III & IV  
PROJECT NO. 148170 C4  
& TMUA-W 19-10 P2 & ES 2019-11**

This Addendum No. 2, consisting of seventeen (17) items submitted by Wallace Engineering is hereby made a part of the Contract Documents to the same extent as though it were originally included therein, and shall supersede anything contained in the Plans and Specifications with which it might conflict. **This Addendum shall be attached to the Index Sheet of the Contract Documents and submitted with the bid. Failure to do so shall result in the bid being deemed non-responsive.**

This Addendum No. 2 consists of the following:

**ITEMS**

1. Delete the existing Proposal in its entirety and replace with the revised Proposal found at <https://www.cityoftulsa.org/government/departments/engineering-services/construction-bids/> . It is the Bidder's responsibility to download the revised Proposal onto their existing thumb drive. The Contract time to "COMPLETE SAID WORK" has been revised from 500 days to 150 days. Items 26 through 31 have been corrected to match summary table in Construction Plans.
2. For the Bidder's information, the project Geotechnical Report was distributed by email to the pre-bid meeting distribution list on December 22<sup>nd</sup>, 2020, from Wallace Engineering.
3. Plan Sheet 13: Storm summary chart updated to reflect the storm sewer replacement to the center of 23<sup>rd</sup> with 43"x68" Elliptical RCP. The existing manhole in the center of 23<sup>rd</sup> renamed to "1A" and Structure 1 renamed "1B". Structure 1A and 1B shall be replaced with a 7'x9' junction box with riser. Inlet "e" changed to a CICI Design 4 inlet.

Wallace Engineering  
Structural Consultants, Inc.  
123 North Martin Luther King Jr. Boulevard  
Tulsa, Oklahoma 74103  
918.584.5858, 800.364.5858  
[www.wallacesc.com](http://www.wallacesc.com)

4. Plan Sheet 15: Added notes to Mill and Overlay typical sections: "1. Cold mill to conc base before overlaying as required. 2. Type S4 asphalt to be installed in maximum lift of 3". For greater Depths, install in multiple lifts of equal thickness with tack coat between. 3. RE: x-sections, 2"-4" Approx." Also, the leader note: "3/4" SUPERPAVE TYPE S5 (PG 70-24 OK) LEVELING COURSE AS DIRECTED BY ENGINEER UNDER FABRIC" was revised to "SUPERPAVE TYPE S5 (PG 70-24 OK) LEVELING COURSE AS DIRECTED BY ENGINEER UNDER FABRIC"
5. Plan Sheet 21: Removal of sidewalk, curb, paving and concrete median reflected along 23<sup>rd</sup> Street to account for the additional storm sewer replacement. The existing storm sewer manhole at the center of 23<sup>rd</sup> Street to be removed along with the 27" storm sewer north of this manhole.
6. Plan Sheets 23, 24, 25, 26, and 27: Legend and shading are revised to make prints more readable.
7. Plan Sheet 26: North of existing storm drain manhole at Sta. 93+20 within street right of way, "Contractor shall expose existing storm drain and reinstall backfill. Place flowable fill as necessary over all pipe joints with ROW"
8. Plan Sheet 32: Sheet revised for additional traffic control on 23<sup>rd</sup> Street to be used for the storm sewer replacement and sanitary sewer repairs under 23<sup>rd</sup> Street.
9. Plan Sheet 35: Pipe Design Table updated to account for additional storm replacement and inlet "e" changing to a CICI Design 4.
10. Plan Sheet 35a: Sheet added for detail of 7'x9' cast-in-place concrete junction box with 5' diameter riser.
11. Plan Sheet 35b: Sheet added for typical details of 7'x9' cast-in-place concrete junction box with 5' diameter riser.
12. Plan Sheet 36: Storm sewer replacement extended to the manhole located at the center of 23<sup>rd</sup> Street. The existing manhole in the center of 23<sup>rd</sup> renamed to "1A" and Structure 1 renamed "1B". Structure 1A and 1B shall be replaced with a 7'x9' junction box with riser. The existing 27" storm sewer between structures 1A and 1B replaced with 43"x68" Elliptical RCP. Replacement of sidewalk, curb, paving and concrete median reflected along 23<sup>rd</sup> Street to account for the additional storm sewer replacement. Inlet "e" changed to a CICI Design 4 inlet.
13. Plan Sheet 47: Sanitary sewer service tee locations updated.
14. Plan Sheet 48: Sanitary sewer service tee locations updated. One service connection removed.
15. Plan Sheet 54: 8"x8"x6" tee, 6" gate valve with box, 6" blind flange, 2" short service, 2" meter can and 2" tapped cap with blowoff added near station 10+61. Quantity table updated to reflect this change.

RIVER WEST PHASE CNI PHASE III & IV  
PROJECT NO. 148170 C4 & TMUA-W 19-10 P2 & ES 2019-11  
January 4, 2021  
Addendum 2, Page 3

16. Plan Sheet 55: Relocated services and tees at stations 14+34.92, 14+41.99, 14+46.02, and 14+48.08 to stations 14+34.57, 14+36.07, 14+40.30, and 14+41.80, respectively.
17. Plan Sheet 63: REMOVE sodding specification note #17.

All other provisions of the Plans and Specifications shall remain in full force and effect.



01/04/2021

Jordan Rodich, PE  
Associate

## **ELECTRONIC BID PROPOSAL INSTRUCTIONS - EXCEL SPREADSHEET**

**PROJECT NO. 148170, C4 & TMUA-W 19-10 P2 & ES2019-11  
RIVER WEST CHOICE NEIGHBORHOODS INITIATIVE PHASE III & IV**

### **Please read the following instructions carefully.**

1. After opening this file re-save it as your company's name.
2. Open the BID FORM Sheet from the tabs below.
3. Input the unit price of the appropriate pay item in the cells highlighted in blue.
4. Review all data input and check calculations to ensure accuracy of Bid.
5. Print 1 hardcopy of the "PROPOSAL" tab, BID FORM and the "SIGNATURE PAGE" tab.
6. Complete and sign the "Signature Page" document.
6. Submit hardcopy and electronic disk with Contract Documents and Specifications for Bid opening date.

### **AGREEMENT FOR USING ELECTRONIC BID PROPOSAL**

By and Between: Wallace Structural Consultants, Inc., (ENGINEER) and RECIPIENT. The enclosed electronic media is provided pursuant to your request and is for your limited use in connection with your submittal of Bid Proposal for PROJECT NO. 148170, C4 & TMUA-W 19-10 P2 & ES2019-11 RIVERWEST CHOICE NEIGHBORHOODS INITIATIVE PHASE III AND PHASE IV. In no event shall the information be used for any other purpose or be released to third parties without the written consent of the ENGINEER. In the event of a discrepancy between the hard copy and this electronic media at delivery or in the future, the hard copy shall govern. ENGINEER hereby disclaims any and all liability for the consequences from use of the electronic media and makes no warranty or guarantee of accuracy. RECIPIENT shall assume full responsibility for the uses and consequences of the electronic media. It is agreed that ENGINEER has and retains ownership of the electronic media. ENGINEER does not warrant or guarantee that the electronic data is compatible with RECIPIENT'S computer hardware or software, and ENGINEER'S responsibility for the electronic media is limited to replacement of defective media for a period of thirty (30) days after delivery to RECIPIENT. !!! By opening and using this FILE, You AGREE to these TERMS AND CONDITIONS!!!

**PROPOSAL**  
**PROJECT NO. 148170, C4 & TMUA-W 19-10 P2 & ES2019-11**  
**RIVER WEST CHOICE NEIGHBORHOODS INITIATIVE PHASE III & IV**

TO: HONORABLE MAYOR  
CITY OF TULSA, OKLAHOMA

THE UNDERSIGNED BIDDER, having carefully examined the drawings, specifications, and other Contract Documents of the above project presently on file in the City Clerk, City of Tulsa Oklahoma:

CERTIFIES THAT he has inspected the site of the proposed work and has full knowledge of the extent and character of the work involved, construction difficulties that may be encountered, and materials necessary for construction, class and type of excavation, and all other factors affecting or which may be affected by the specified work; and

CERTIFIES THAT he has not entered into collusion with any other bidder or prospective bidder relative to the project and/or bid; and

HEREBY PROPOSES: to enter into a contract to provide all necessary labor, materials, equipment and tools to completely construct and finish all the work required by the Contract Documents hereto attached and other documents referred to therein: to complete said work within **150** calendar days after the work order is issued; and to accept in full payment therefore the amount set forth below for all work actually performed as computed by the Engineer as set forth in the Contract.

**Basis of Award**

THE BID PROPOSAL INCLUDES A BASE BID WITH TWO STORM MATERIAL OPTIONS AND THREE WATERLINE MATERIAL OPTIONS. THE BIDDERS SHALL BID ALL OPTIONS OR ALTERNATES. IT SHOULD BE NOTED THAT THE LOWEST RESPONSIBLE BID SHALL BE DETERMINED BY THE TOTAL BASE BID PLUS THE LOWEST STORM MATERIAL OPTION PLUS THE LOWEST WATERLINE MATERIAL OPTION. ANY PROPOSAL SUBMITTED WITH ANY BID OPTION OR ALTERNATE INCOMPLETE SHALL BE CONSIDERED NON-RESPONSIVE. THE CITY OF TULSA RESERVES THE RIGHT TO SELECT EITHER STORM MATERIAL OPTION OR ANY OF THE THREE WATERLINE MATERIAL OPTIONS, OR A COMBINATION OF ANY OF THESE, IN THE EVENT THE BID COSTS OF ANY MATERIAL OPTION ARE EQUAL.

**Note:**     - Item numbers omitted are not a part of the Contract.

PROPOSAL  
PROJECT NO. 148170, C4 & TMUA-W 19-10 P2 & ES2019-11  
RIVER WEST CHOICE NEIGHBORHOODS INITIATIVE PHASE III & IV

					DATA INPUT	
BID ITEM	SPEC NO.	DESCRIPTION	UNIT	QTY	UNIT PRICE	TOTAL EACH ITEM
ROADWAY BASE BID						
1	201(A)	CLEARING AND GRUBBING	ACRE	1		\$0.00
2	202(A)	UNCLASSIFIED EXCAVATION	CY	1484		\$0.00
3	202(D)	UNCLASSIFIED BORROW	CY	412		\$0.00
4	205(A)	TYPE A - SALVAGED TOPSOIL	CY	135		\$0.00
5	220	SWPPP DOCUMENTATION AND MANAGEMENT	EA	1		\$0.00
6	221(C)	TEMPORARY SILT FENCE	LF	162		\$0.00
7	221(D)	TEMPORARY SEDIMENT FILTER	EA	19		\$0.00
8	232(A)	SEEDING	ACRE	1		\$0.00
9	230(A)	SOLID SLAB SODDING	SY	330		\$0.00
10	303(A)	AGGREGATE BASE TYPE A	CY	1220		\$0.00
11	310(B)	SUBGRADE METHOD B	SY	2888		\$0.00
12	325	SEPARATOR FABRIC	SY	3544		\$0.00
13	326(B)	GEOGRID REINFORCEMENT (TRIAIAL TENSAR TX7 OR ENGINEER APPROVED EQUAL)	SY	3066		\$0.00
14	409	FABRIC REINFORCEMENT	SY	2200		\$0.00
15	411(B)	SUPERPAVE, TYPE S3 (PG 70-24)	TON	551		\$0.00
16	411(C)	SUPERPAVE, TYPE S4 (PG 70-24) (INSOLUBLE)	TON	703		\$0.00
17	411(D)	SUPERPAVE, TYPE S5 (PG 70-24)	TON	6		\$0.00
18	412	COLD MILL PAVEMENT	SY	2200		\$0.00
19	609(B)	COMBINED CURB AND GUTTER (6" BAR)	LF	2259		\$0.00
20	609(B)	CONCRETE VALLEY GUTTER	LF	74		\$0.00
21	610(A)	CONCRETE SIDEWALK (4" THICK)	SY	1291		\$0.00
22	610(I)	TACTILE WARNING DEVICE-NEW	SF	180		\$0.00
23	610(B)	CONCRETE DRIVEWAY	SY	544		\$0.00
24	611(A)	MANHOLE, 4' I.D., COMPLETE IN PLACE (STORM SEWER)	EA	4		\$0.00
25	611(B)	ADDITIONAL DEPTH IN 4' I.D. MANHOLE	VF	3		\$0.00
26	611(A)	MANHOLE, 5' I.D., COMPLETE IN PLACE (STORM SEWER)	EA	1		\$0.00
27	611(B)	ADDITIONAL DEPTH IN 5' I.D. MANHOLE	VF	3		\$0.00
28	611(A)	MANHOLE, 6' I.D., COMPLETE IN PLACE (STORM SEWER)	EA	1		\$0.00
29	611(B)	ADDITIONAL DEPTH IN 6' I.D. MANHOLE	VF	2		\$0.00
30	611(A)	MANHOLE, 8' I.D., COMPLETE IN PLACE (STORM SEWER)	EA	4		\$0.00
31	611(B)	ADDITIONAL DEPTH IN 8' I.D. MANHOLE	VF	17		\$0.00
32	611(G)	INLET, CICI DESIGN NO. 2, COMPLETE IN PLACE	EA	1		\$0.00
33	611(G)	INLET, CICI DESIGN NO. 2B, COMPLETE IN PLACE	EA	1		\$0.00
34	611(G)	INLET, CICI DESIGN NO. 3, COMPLETE IN PLACE	EA	2		\$0.00
35	611(H)	ADD'L DEPTH IN INLET, CICI DESIGN NO. 3	VF	3		\$0.00
36	611(G)	INLET, CICI DESIGN NO. 3A, COMPLETE IN PLACE	EA	2		\$0.00
37	611(G)	INLET, CICI DESIGN NO. 4, COMPLETE IN PLACE	EA	2		\$0.00
38	611(H)	ADD'L DEPTH IN INLET, CICI DESIGN NO. 4	VF	6		\$0.00
39	611(G)	INLET, CICI DESIGN NO. 4(2A), COMPLETE IN PLACE	EA	1		\$0.00
40	611(H)	ADD'L DEPTH IN INLET, CICI DESIGN NO. 4(2A)	EA	1		\$0.00
41	611(G)	INLET, STANDARD MEDIAN DRAIN, DESIGN SMD-4, COMPLETE IN PLACE	VF	2		\$0.00
42	612(A)	MANHOLE ADJUSTED TO GRADE (PUBLIC)	EA	1		\$0.00
43	612(E)	VALVE BOX ADJUSTED TO GRADE	EA	1		\$0.00
44	613(A)	RCP, 15" ROUND, COMPLETE IN PLACE	LF	61		\$0.00
45	613(A)	RCP, 18" ROUND, COMPLETE IN PLACE	LF	286		\$0.00
46	613(A)	RCP, 24" ROUND, COMPLETE IN PLACE	LF	228		\$0.00
47	613(A)	RCP, 30" ROUND, COMPLETE IN PLACE	LF	108		\$0.00
48	613(A)	RCP, 36" ROUND, COMPLETE IN PLACE	LF	200		\$0.00
49	613(A)	RCP, 43"x68" ELLIPTICAL, COMPLETE IN PLACE	LF	214		\$0.00
50	619(B)	REMOVAL OF STORM MANHOLE	EA	8		\$0.00
51	619(B)	REMOVAL OF INLET	EA	7		\$0.00
52	619(B)	REMOVAL OF CURB AND GUTTER	LF	2185		\$0.00
53	619(B)	REMOVAL OF ASPHALT OVERLAYED CONCRETE PAVEMENT	SY	673		\$0.00
54	619(B)	REMOVAL OF CONCRETE PAVEMENT	SY	2086		\$0.00
55	619(B)	REMOVAL OF CONCRETE SIDEWALK	SY	489		\$0.00
56	619(B)	REMOVAL OF DRIVEWAY	SY	236		\$0.00
57	619(B)	REMOVAL OF LIGHTPOLES AND POWERPOLES	EA	3		\$0.00
58	619(B)	REMOVAL OF 18" DRAIN PIPE	LF	399		\$0.00
59	619(B)	REMOVAL OF 27" DRAIN PIPE	LF	681		\$0.00
60	619(C)	SAWING PAVEMENT	LF	1570		\$0.00
61	641	MOBILIZATION	EA	1		\$0.00
62	642	CONSTRUCTION STAKING	EA	1		\$0.00
63	805(A)	REMOVAL OF TRAFFIC ITEMS (SIGNS)	EA	6		\$0.00
64	855(A)	TRAFFIC STRIPE 4" PLASTIC	LF	1429		\$0.00
65	880(B)	SIGNS 0.00 TO 6.25 SF	SD	375		\$0.00
66	880(B)	SIGNS 6.26 TO 15.99 SF	SD	2430		\$0.00
67	880(B)	SIGNS 16.00 AND UP	SD	360		\$0.00
68	880(C)	BARRICADES (TYPE III)	SD	3,990		\$0.00
69	880(E)	TYPE "A" WARNING LIGHT	SD	7,980		\$0.00
70	880(E)	TYPE "C" WARNING LIGHT	SD	2,790		\$0.00
71	880(F)	DRUMS	SD	5,500		\$0.00
72	880(G)	TUBE CHANNELIZERS	SD	5,500		\$0.00
73	SPECIAL	PROJECT SIGN (CITY OF TULSA)	EA	2		\$0.00
74	SPECIAL	TYPE I AC PATCH (NON-ARTERIAL)	CY	10		\$0.00
75	SPECIAL	TYPE I APC PATCH (NON-ARTERIAL)	CY	52		\$0.00
76	SPECIAL	TYPE I APC PATCH (ARTERIAL)	CY	55		\$0.00
77	SPECIAL	TYPE I PCC PATCH (ARTERIAL)	CY	8		\$0.00
78	SPECIAL	URBAN RIGHT-OF-WAY RESTORATION	EA	1		\$0.00
79	SPECIAL	OWNER ALLOWANCE	ALLOW	1	\$10,000.00	\$10,000.00
80	SPECIAL	SIGNAGE FOR LOCAL BUSINESS ACCESS (BAS-1)	SD	84		\$0.00
81	(SP) COT 202	QUICK SET FLOWABLE FILL	CY	22		\$0.00
82	(SP) COT 643	CONTRACTOR'S QUALITY CONTROL	EA	1		\$0.00
83	(SP) COT 608(A)	GROUND SIGN	SF	88		\$0.00
84	(SP) COT 608(C)	1-1/2" SIGN POST	LF	5		\$0.00
85	(SP) COT 608(D)	1-3/4" SIGN POST	LF	126		\$0.00
86	(SP) COT 608(E)	2" SIGN POST	LF	36		\$0.00
87	(SP) COT 602	4" PVC SCH 40 CONDUIT (TRENCHED)	LF	581		\$0.00

BID ITEM	SPEC NO.	DESCRIPTION	UNIT	QTY	UNIT PRICE	TOTAL EACH ITEM
88	SPECIAL	CURB RAMP TYPE "A"	EA	9		\$0.00
89	SPECIAL	CURB RAMP TYPE "A/B"	EA	2		\$0.00
90	SPECIAL	CURB RAMP TYPE "D"	EA	6		\$0.00
91	SPECIAL	4 FOOT WIDE SIDEWALK W/ INTEGRAL RETAINING WALL, COMPLETE, IN-PLACE	LF	63		\$0.00
92	SPECIAL	TRIM TREE	EA	1		\$0.00
93	SPECIAL	STORM JUNCTION BOX, COMPLETE, IN PLACE, NOT INCLUDING MH RISER	EA	2		\$0.00
<b>LANDSCAPING ITEMS</b>						
94	203(A), SPECIAL	SOLID SLAB SODDING	SF	6740		\$0.00
95	231(A) SPECIAL	LEGACY SUGAR MAPLE (3"CP, SINGLE TRUNK)	EA	6		\$0.00
96	231(A) SPECIAL	SARAH'S FAVORITE CRAPEMYRTLE (2.5"CP, SINGLE TRUNK)	EA	11		\$0.00
97	231(A) SPECIAL	AERYN TRIDENT MAPLE (2.5"CP, SINGLE TRUNK)	EA	10		\$0.00
98	SPECIAL	IRRIGATION SYSTEM COMPLETE	SY	748		\$0.00
99	SPECIAL	24" DEPTH TOPSOIL & SOIL PREP	CY	300		\$0.00
100	SPECIAL	LANDSCAPE FINE GRADING	SY	748		\$0.00
101	SPECIAL	4" ID. PERFORATED DRAINLINE	LF	1340		\$0.00
102	SPECIAL	TREE GROUND ANCHORS	EA	27		\$0.00
103	SPECIAL	2" DEPTH WOOD MULCH	CY	20		\$0.00
104	SPECIAL	LANDSCAPE WARRANTY	EA	1		\$0.00
105	SPECIAL	LANDSCAPE MAINTENANCE	EA	1		\$0.00
<b>ELECTRICAL ITEMS</b>						
106	SPECIAL	SITE LIGHTING 2" CONDUIT, TRENCHING, ACCESSORIES	LF	2000		\$0.00
107	SPECIAL	IRRIGATION CONTROLLER POWER (1" C, 1 COUNT)	LF	400		\$0.00
108	SPECIAL	IRRIGATION CONTROLLER POWER (#10 WIRE, 1 COUNT)	LF	400		\$0.00
109	SPECIAL	PULL BOXES	EA	22		\$0.00
110	SPECIAL	NEW UNDERGROUND FEED TO CELL TOWER - TRENCH, 4" CONDUIT AND ACCESSORIES	LF	70		\$0.00
111	SPECIAL	RENTAL TEMPORARY GENERATOR FOR CELL TOWER	EA	1		\$0.00
<b>SUBTOTAL BASE BID</b>						<b>\$10,000.00</b>

<b>WATERLINE BASE BID</b>						
112	COT 301	RIGHT OF WAY CLEARING AND RESTORING	LF	1088		\$0.00
113	COT 302	EXCAVATION AND BACKFILL, UNCLASSIFIED	CY	433		\$0.00
114	COT 303	MOBILIZATION	EA	1		\$0.00
115	SPECIAL	CONSTRUCTION AS-BUILTS	EA	1		\$0.00
116	SPECIAL	WATER LOCATOR BALLS	EA	25		\$0.00
117	COT 312	8 INCH X 6 INCH DUCTILE IRON REDUCER (RJ)	EA	1		\$0.00
118	COT 312	6 INCH DUCTILE IRON 45 DEGREE BEND (RJ)	EA	3		\$0.00
119	COT 312	6 INCH X 6 INCH DUCTILE IRON TEE (RJ)	EA	2		\$0.00
120	COT 312	6 INCH BLIND FLANGE (RJ)	EA	6		\$0.00
121	COT 315	PRIVATE SERVICE CONNECTION BY LICENSED BONDED PLUMBER	EA	1		\$0.00
122	COT 315	2 INCH WATER SERVICE CONNECTION (SHORT)	EA	6		\$0.00
123	COT 315	2 INCH WATER METER CAN, LID & RIM	EA	6		\$0.00
124	COT 315	2 INCH TAPPED CAP W/ BLOWOFF	EA	6		\$0.00
125	COT 317	6 INCH GATE VALVE (RJ)	EA	10		\$0.00
126	COT 317	8 INCH GATE VALVE (RJ)	EA	6		\$0.00
127	COT 317	2 INCH AIR RELIEF VALVE	EA	1		\$0.00
128	COT 317	3-WAY FIRE HYDRANT, IN PLACE	EA	2		\$0.00
129	COT 317	6 INCH FIRE HYDRANT EXTENSION	EA	1		\$0.00
130	COT 318	VALVE BOX	EA	16		\$0.00
131	COT 318	VALVE BOX EXTENSION	VF	4		\$0.00
<b>SUBTOTAL WATERLINE BASE BID</b>						<b>\$0.00</b>

<b>WASTEWATER BASE BID</b>						
132	COT 301	RIGHT OF WAY CLEARING AND RESTORING, COMPLETE IN PLACE	LF	1596		\$0.00
133	COT 302	EXCAVATION AND BACKFILL, UNCLASSIFIED	CY	2889		\$0.00
134	COT 309	8 INCH PVC, SDR-35	LF	483		\$0.00
135	COT 309	18 INCH PVC, SDR-26	LF	1113		\$0.00
136	COT 314(A)	4' DIA MANHOLE	EA	3		\$0.00
137	COT 314(B)	4' DIA MANHOLE (ADD'L DEPTH)	VF	14		\$0.00
138	COT 314(A)	5' DIA MANHOLE	EA	4		\$0.00
139	COT 314(B)	5' DIA MANHOLE (ADD'L DEPTH)	VF	67		\$0.00
140	COT 314(A)	5' DIA DROP MANHOLE	EA	1		\$0.00
141	COT 314(B)	5' DIA DROP MANHOLE (ADD'L DEPTH)	VF	12		\$0.00
142	COT 315	CONNECTION TO EXISTING MANHOLE	EA	1		\$0.00
143	COT 315	CONNECT TO EX. 8" SS	EA	1		\$0.00
144	COT 315	CONNECT TO EX. 18" SS	EA	1		\$0.00
145	COT 315	8 INCH BY 4" IN-LINE TEE FOR SERVICE CONNECTION	EA	17		\$0.00
146	COT 400	PHOTOGRAPHIC DOCUMENTATION	EA	1		\$0.00
147	COT 404	5 FT ID MANHOLE DEMOLITION	EA	3		\$0.00
148	COT 405	POINT REPAIR, 8" OPEN CUT REPLACEMENT, SDR 26 PVC	LF	40		\$0.00
149	COT 405, 408	4" PVC SERVICE RECONNECTIONS	EA	1		\$0.00
150	COT 405, 408	4" PVC SERVICE LINE	LF	1		\$0.00
151	COT 405, 408	6" PVC SERVICE RECONNECTIONS	EA	1		\$0.00
152	COT 405, 408	6" PVC SERVICE LINE	LF	5		\$0.00
153	COT 409	8" SLIPLINE REPLACEMENT, SDR 21 HDPE	LF	957		\$0.00
154	COT 409	15" SLIPLINE REPLACEMENT, 12" SDR 21 HDPE	LF	255		\$0.00
155	COT 410	6" PVC SERVICE RECONNECTIONS (CIPP OR SLIPLINING)	EA	1		\$0.00
156	COT 415	PRE-CONSTRUCTION TELEVISION INSPECTION	LF	1212		\$0.00
157	COT 415	COMPLETE DROP MANHOLE REPLACEMENT, 4' I.D. (0-6' DEPTH)	EA	5		\$0.00
158	COT 415	COMPLETE DROP MANHOLE REPLACEMENT, 4' I.D. (>6' DEPTH)	VF	29		\$0.00
159	COT 415	COMPLETE MANHOLE REPLACEMENT, 5' I.D. (0-6' DEPTH)	EA	1		\$0.00
160	COT 415	COMPLETE MANHOLE REPLACEMENT, 5' I.D. (>6' DEPTH)	VF	17		\$0.00
161	COT 415	COMPLETE DROP MANHOLE REPLACEMENT, 5' I.D. (0-6' DEPTH)	EA	1		\$0.00
162	COT 415	COMPLETE DROP MANHOLE REPLACEMENT, 5' I.D. (>6' DEPTH)	VF	12		\$0.00
163	COT 418	REPLACEMENT OF MANHOLE FRAME SEAL AND CHIMNEY (TYPE D REPAIR)	EA	1		\$0.00
164	COT 420	MANHOLE STEP REMOVAL AND STEP INSTALLATION (TYPE I REPAIR)	EA	1		\$0.00
165	COT 421	MANHOLE WALL REHABILITATION (TYPE Gq REPAIR)	SF	10		\$0.00
166	COT 423	OBSTRUCTION REMOVAL	EA	1		\$0.00
<b>SUBTOTAL WASTEWATER BASE BID</b>						<b>\$0.00</b>

BID ITEM	SPEC NO.	DESCRIPTION	UNIT	QTY	UNIT PRICE	TOTAL EACH ITEM
<b>STORM MATERIAL - OPTION 1 (RCP)</b>						
167	613(A)	RCP, 42" ROUND, COMPLETE IN PLACE	LF	152		\$0.00
168	613(A)	RCP, 48" ROUND, COMPLETE IN PLACE	LF	93		\$0.00
SUBTOTAL STORM MATERIAL OPTION 1						\$0.00
<b>STORM MATERIAL - OPTION 2 (CPP)</b>						
169	COT 215	CPP, 42" ROUND, COMPLETE IN PLACE	LF	152		\$0.00
170	COT 215	CPP, 48" ROUND, COMPLETE IN PLACE	LF	93		\$0.00
SUBTOTAL STORM MATERIAL OPTION 2						\$0.00
<b>WATER MATERIAL - OPTION 1 (PVC)</b>						
171	COT 309	6 INCH PVC AWWA C900 CLASS 200 DR-14 (RJ)	LF	398		\$0.00
172	COT 309	6 INCH PVC AWWA C900 CLASS 200 DR-14	LF	96		\$0.00
173	COT 309	8 INCH PVC AWWA C900 CLASS 200 DR-14 (RJ)	LF	525		\$0.00
174	COT 309	8 INCH PVC AWWA C900 CLASS 200 DR-14	LF	69		\$0.00
175	COT 312	8 INCH DUCTILE IRON 22.5 DEGREE BEND (RJ)	EA	4		\$0.00
176	COT 312	8 INCH DUCTILE IRON 45 DEGREE BEND (RJ)	EA	2		\$0.00
177	COT 312	6 INCH DUCTILE IRON 22.5 DEGREE BEND (RJ)	EA	3		\$0.00
178	COT 312	6 INCH DUCTILE IRON 45 DEGREE BEND (RJ)	EA	4		\$0.00
179	COT 312	8 INCH X 6 INCH DUCTILE IRON TEE (RJ)	EA	9		\$0.00
180	COT 312	6 INCH DUCTILE IRON SLEEVE (RJ)	EA	1		\$0.00
181	COT 312	8 INCH DUCTILE IRON SLEEVE (RJ)	EA	1		\$0.00
SUBTOTAL WATER MATERIAL OPTION 1						\$0.00
<b>WATER MATERIAL - OPTION 2 (DIP)</b>						
182	COT 307	6 INCH DIP, C51 POLYETHYLENE WRAPPED, RJ	LF	398		\$0.00
183	COT 307	6 INCH DIP, C51 POLYETHYLENE WRAPPED	LF	96		\$0.00
184	COT 307	8 INCH DIP, C51 POLYETHYLENE WRAPPED, RJ	LF	525		\$0.00
185	COT 307	8 INCH DIP, C51 POLYETHYLENE WRAPPED	LF	69		\$0.00
186	COT 312	8 INCH DUCTILE IRON 22.5 DEGREE BEND (RJ)	EA	4		\$0.00
187	COT 312	8 INCH DUCTILE IRON 45 DEGREE BEND (RJ)	EA	2		\$0.00
188	COT 312	6 INCH DUCTILE IRON 22.5 DEGREE BEND (RJ)	EA	3		\$0.00
189	COT 312	6 INCH DUCTILE IRON 45 DEGREE BEND (RJ)	EA	4		\$0.00
190	COT 312	8 INCH X 6 INCH DUCTILE IRON TEE (RJ)	EA	8		\$0.00
191	COT 312	6 INCH DUCTILE IRON SLEEVE (RJ)	EA	1		\$0.00
192	COT 312	8 INCH DUCTILE IRON SLEEVE (RJ)	EA	1		\$0.00
SUBTOTAL WATER MATERIAL OPTION 2						\$0.00
<b>WATER MATERIAL - OPTION 3 (HDPE)</b>						
193	COT 309	6 INCH PVC AWWA C900 CLASS 200 DR-14 (RJ)	LF	127		\$0.00
194	COT 309	8 INCH PVC AWWA C900 CLASS 200 DR-14 (RJ)	LF	100		\$0.00
195	COT 309A	10 INCH HDPE AWWA C906 PE4710 DR-11 (DIPS)	LF	392		\$0.00
196	COT 309A	12 INCH HDPE AWWA C906 PE4710 DR-11 (DIPS)	LF	494		\$0.00
197	COT 312	8 INCH DUCTILE IRON 45 DEGREE BEND (RJ)	EA	1		\$0.00
198	COT 312	6 INCH DUCTILE IRON 45 DEGREE BEND (RJ)	EA	4		\$0.00
199	COT 312	8 INCH X 6 INCH DUCTILE IRON TEE (RJ)	EA	8		\$0.00
200	COT 312	6 INCH DUCTILE IRON SLEEVE (RJ)	EA	1		\$0.00
201	COT 312	8 INCH DUCTILE IRON SLEEVE (RJ)	EA	1		\$0.00
202	COT 312	10 INCH X 6 INCH DIP REDUCER	EA	2		\$0.00
203	COT 312	12 INCH X 8 INCH DIP REDUCER	EA	8		\$0.00
204	COT 312A	10 INCH HDPE MJ ADAPTOR (DIPS) (RJ)	EA	4		\$0.00
205	COT 312A	12 INCH HDPE MJ ADAPTOR (DIPS) (RJ)	EA	8		\$0.00
206	COT 312A	10 INCH HDPE WALL ANCHOR (DIPS) (RJ)	EA	4		\$0.00
207	COT 312A	12 INCH HDPE WALL ANCHOR (DIPS) (RJ)	EA	8		\$0.00
SUBTOTAL WATER MATERIAL OPTION 3						\$0.00

Base Bid + Storm Pipe Material Option 1 (RCP) + Water Material Option 1 (PVC)	<u>\$10,000.00</u>
Base Bid + Storm Pipe Material Option 1 (RCP) + Water Material Option 2 (DIP)	<u>\$10,000.00</u>
Base Bid + Storm Pipe Material Option 1 (RCP) + Water Material Option 3 (HDPE)	<u>\$10,000.00</u>
Base Bid + Storm Pipe Material Option 2 (CPP) + Water Material Option 1 (PVC)	<u>\$10,000.00</u>
Base Bid + Storm Pipe Material Option 2 (CPP) + Water Material Option 2 (DIP)	<u>\$10,000.00</u>
Base Bid + Storm Pipe Material Option 2 (CPP) + Water Material Option 3 (HDPE)	<u>\$10,000.00</u>

**BASE BID ( Base Bid plus Lowest of Two Storm Material Options plus Lowest of Three Water Material Options )** \$10,000.00

Enclosed is a (        ) Bidder's Surety Bond, (        ) Certified Check, (        ) Cashier's Check for

\_\_\_\_\_ %

which the City of Tulsa may retain or recover as liquidated damages in the event that the undersigned fails to enter into contract for the work covered by this proposal., provided the Contract is awarded to the undersigned within thirty (30) days, or within ninety (90) days if Federal funds are utilized, from the date fixed for opening of bids and the undersigned fails to execute said Contract and furnish the required bonds and other requirements as called for in these Contract Documents within thirty (30) days after award of Contract.

Dated at Tulsa, Oklahoma, this \_\_\_\_\_ day of \_\_\_\_\_, 20\_\_.

Respectfully submitted,

\_\_\_\_\_  
(Complete legal name of company)

\_\_\_\_\_  
(State of Organization)

By:

ATTEST:

Title: \_\_\_\_\_

\_\_\_\_\_  
Title: Corporate Secretary

(SEAL)

Address: \_\_\_\_\_

\_\_\_\_\_  
\_\_\_\_\_  
\_\_\_\_\_

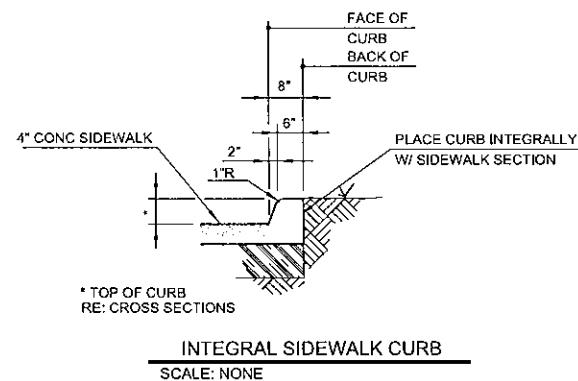
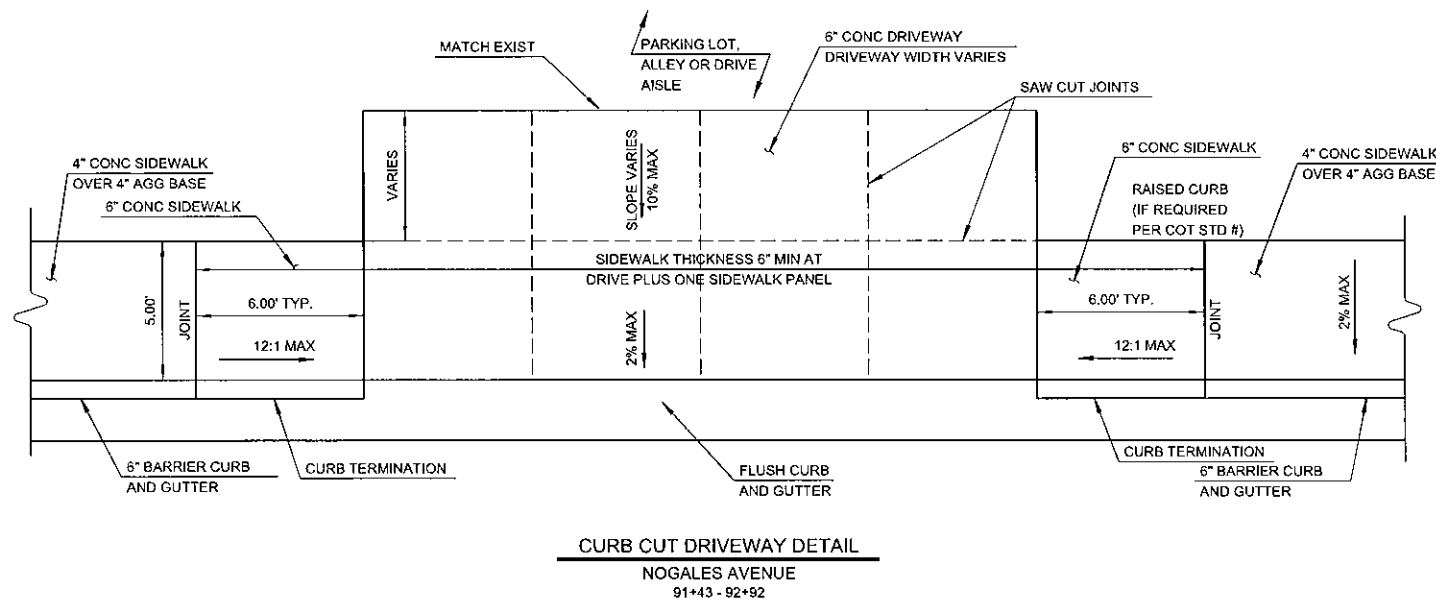
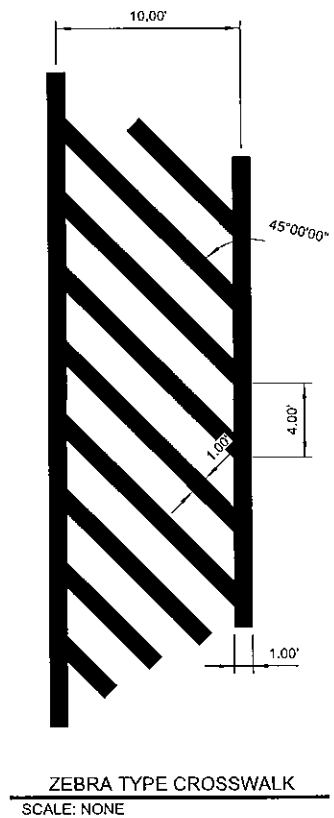
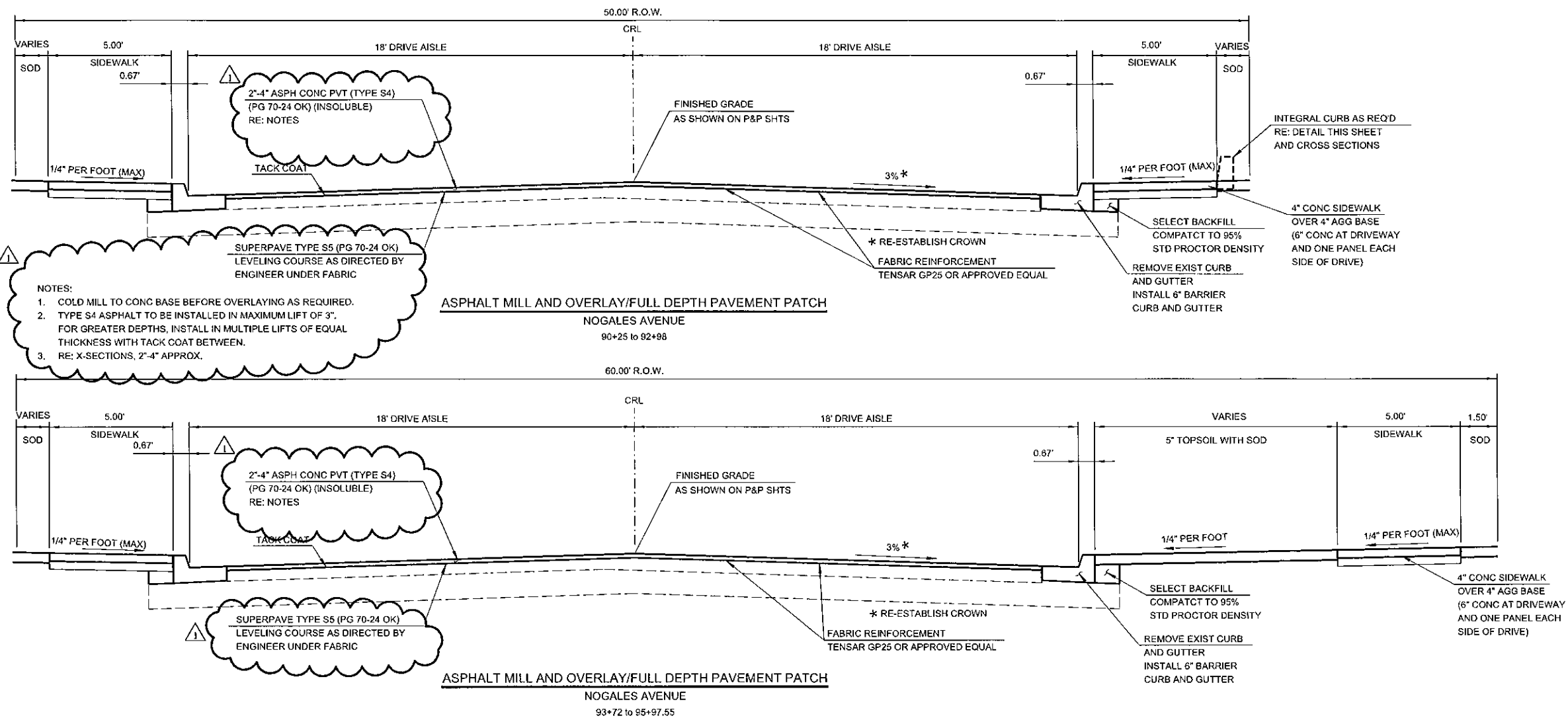
Telephone Number: \_\_\_\_\_

Fax Number: \_\_\_\_\_

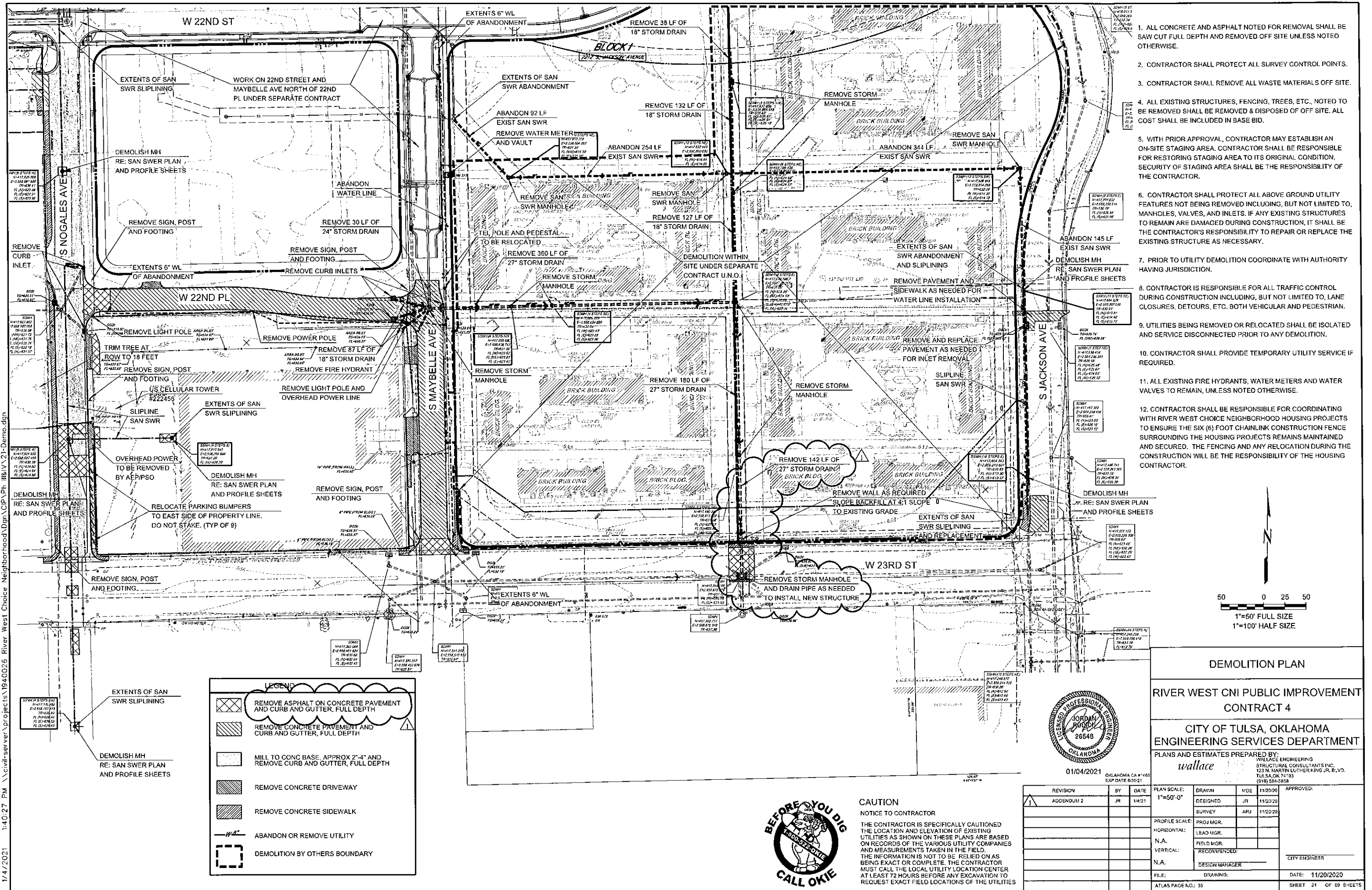
The undersigned acknowledge receipt of the following Addenda (give number and date of each):

\_\_\_\_\_  
\_\_\_\_\_  
\_\_\_\_\_  
\_\_\_\_\_

12/31/2020 9:33:35 AM \\civil-server\projects\1940026 River West Choice Neighborhood\Drawings\15-Street Sections 2.dgn



REVISION				BY	DATE	PLAN SCALE:				DRAWN				VDE				APPROVED:			
ADDENDUM 2				JR	1/1/21	N.A.				DESIGNED				JR				11/20/20			
										SURVEY				ARJ				11/20/20			
										PROJ MGR.											
										LEAD MGR.											
										FIELD MGR.											
										RECOMMENDED:											
										DESIGN MANAGER								CITY ENGINEER			
										FILE:				DRAWING:				DATE: 11/20/2020			
																		SHEET 15 OF 69 SHEETS			



1. ALL CONCRETE AND ASPHALT NOTED FOR REMOVAL SHALL BE SAW CUT FULL DEPTH AND REMOVED OFF SITE UNLESS NOTED OTHERWISE.
2. CONTRACTOR SHALL PROTECT ALL SURVEY CONTROL POINTS.
3. CONTRACTOR SHALL REMOVE ALL WASTE MATERIALS OFF SITE.
4. ALL EXISTING STRUCTURES, FENCING, TREES, ETC., NOTED TO BE REMOVED SHALL BE REMOVED & DISPOSED OF OFF SITE. ALL COST SHALL BE INCLUDED IN BASE BID.
5. WITH PRIOR APPROVAL, CONTRACTOR MAY ESTABLISH AN ON-SITE STAGING AREA. CONTRACTOR SHALL BE RESPONSIBLE FOR RESTORING STAGING AREA TO ITS ORIGINAL CONDITION. SECURITY OF STAGING AREA SHALL BE THE RESPONSIBILITY OF THE CONTRACTOR.
6. CONTRACTOR SHALL PROTECT ALL ABOVE GROUND UTILITY FEATURES NOT BEING REMOVED INCLUDING, BUT NOT LIMITED TO, MANHOLES, VALVES, AND INLETS. IF ANY EXISTING STRUCTURES TO REMAIN ARE DAMAGED DURING CONSTRUCTION, IT SHALL BE THE CONTRACTOR'S RESPONSIBILITY TO REPAIR OR REPLACE THE EXISTING STRUCTURE AS NECESSARY.
7. PRIOR TO UTILITY DEMOLITION COORDINATE WITH AUTHORITY HAVING JURISDICTION.
8. CONTRACTOR IS RESPONSIBLE FOR ALL TRAFFIC CONTROL DURING CONSTRUCTION INCLUDING, BUT NOT LIMITED TO, LANE CLOSURES, DETOURS, ETC. BOTH VEHICULAR AND PEDESTRIAN.
9. UTILITIES BEING REMOVED OR RELOCATED SHALL BE ISOLATED AND SERVICE DISCONNECTED PRIOR TO ANY DEMOLITION.
10. CONTRACTOR SHALL PROVIDE TEMPORARY UTILITY SERVICE IF REQUIRED.
11. ALL EXISTING FIRE HYDRANTS, WATER METERS AND WATER VALVES TO REMAIN, UNLESS NOTED OTHERWISE.
12. CONTRACTOR SHALL BE RESPONSIBLE FOR COORDINATING WITH RIVER WEST CHOICE NEIGHBORHOOD HOUSING PROJECTS TO ENSURE THE SIX (6) FOOT CHAINLINK CONSTRUCTION FENCE SURROUNDING THE HOUSING PROJECTS REMAINS MAINTAINED AND SECURED. THE FENCING AND ANY RELOCATION DURING THE CONSTRUCTION WILL BE THE RESPONSIBILITY OF THE HOUSING CONTRACTOR.

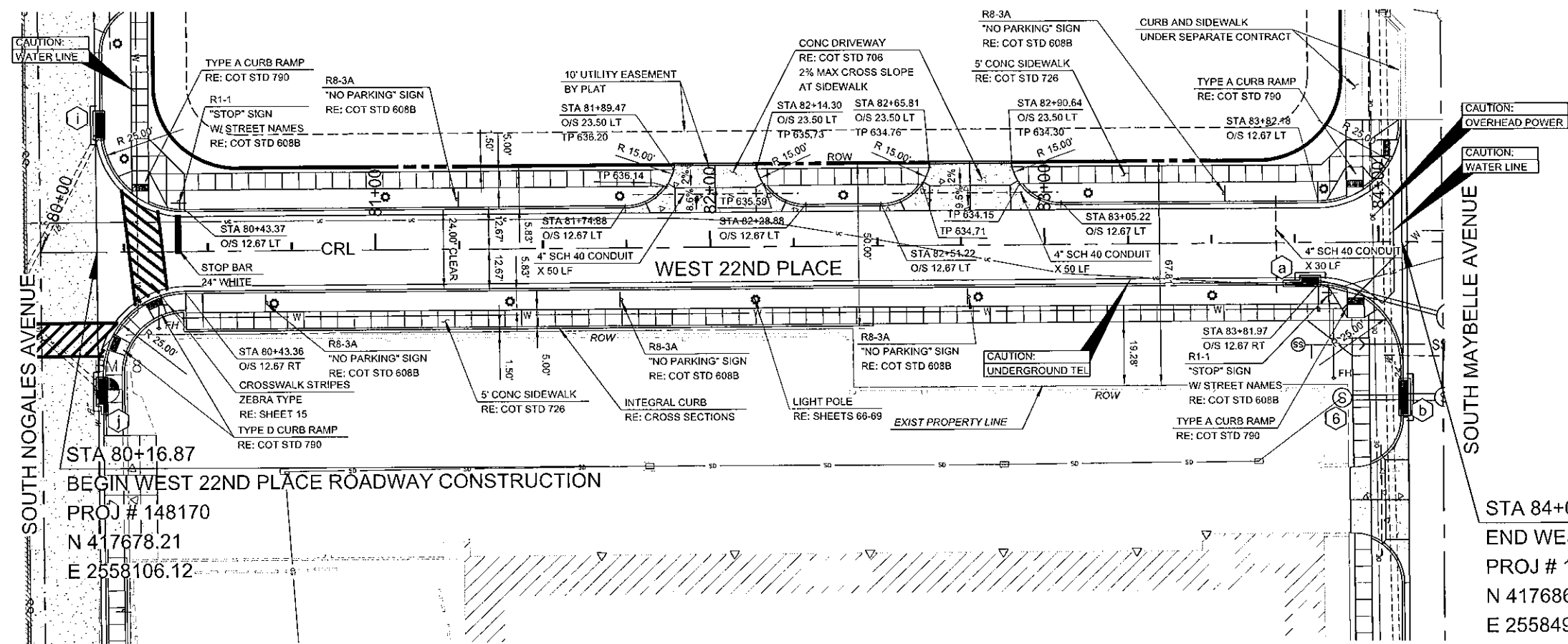


**CAUTION**  
**NOTICE TO CONTRACTOR**

THE CONTRACTOR IS SPECIFICALLY CAUTIONED THE LOCATION AND ELEVATION OF EXISTING UTILITIES AS SHOWN ON THESE PLANS ARE BASED ON RECORDS OF THE VARIOUS UTILITY COMPANIES AND MEASUREMENTS TAKEN IN THE FIELD. THE INFORMATION IS NOT TO BE RELIED ON AS BEING EXACT OR COMPLETE. THE CONTRACTOR MUST CALL THE LOCAL UTILITY LOCATION CENTER AT LEAST 72 HOURS BEFORE ANY EXCAVATION TO REQUEST EXACT FIELD LOCATIONS OF THE UTILITIES.

REVISION	BY	DATE	PLAN SCALE: 1"=40'-0"	DRAWN	VDE	11/20/20	APPROVED:
ADDENDUM 2	JR	1/4/21		DESIGNED	JR	11/20/20	
				SURVEY	ARJ	11/20/20	
			PROFILE SCALE:	PROJ MGR.			
			HORIZONTAL:	LEAD MGR.			
			N.A.	FIELD MGR.			
			VERTICAL:	RECOMMENDED:			<u>CITY ENGINEER</u>
			N.A.	DESIGN MANAGER			
			FILE:	DRAWING:		DATE: 11/20/2020	
			ATLAS PAGE NO.: 35			SHEET 23 OF 69 SHEETS	

12/31/2020 3:04:56 PM \\civl-server\projects\1940026 River West Choice Neighborhood\Drawings\24-PWP-22nd Pl.dgn



**LEGEND**

- ASPHALT PAVEMENT
- CONCRETE PAVEMENT
- ASPHALT OVERLAY

**NOTE:**

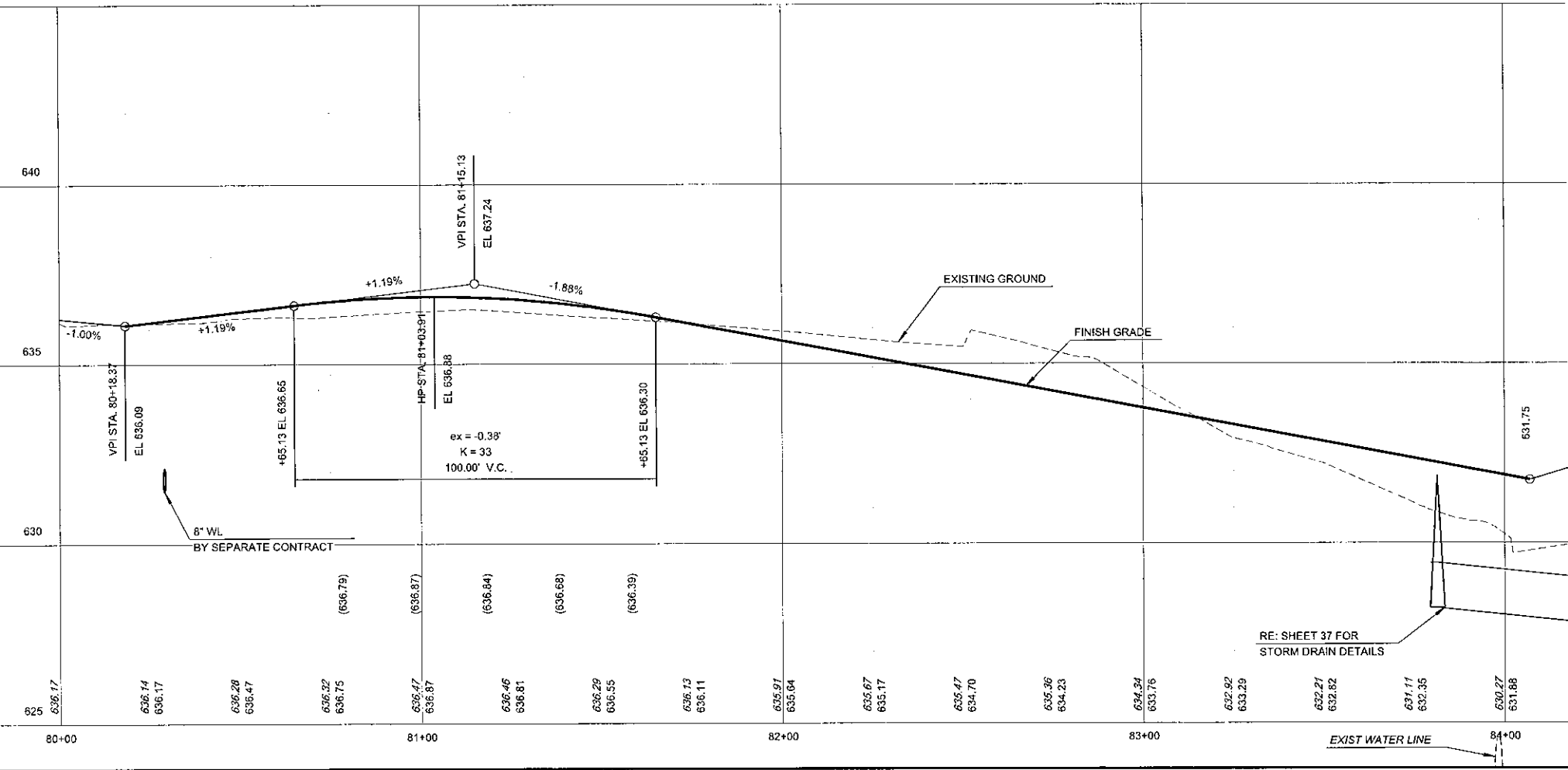
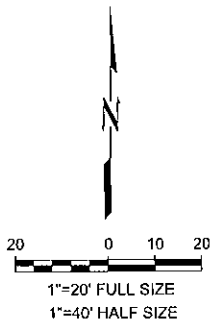
- FOR TYPICAL SECTIONS, RE: SHT 14-15
- FOR GEOMETRICS, RE: SHT 16
- FOR INTERSECTIONS, RE: SHT 28-29
- FOR STORM SEWER DATA, RE: SHTS 36-39
- FOR SANITARY SEWER DATA, RE: SHTS 43-51
- FOR WATER LINE DATA, RE: 53-55
- FOR LANDSCAPE & IRRIGATION, RE: SHTS 63-65
- FOR STREET LIGHTING, RE: SHTS 66-69

**BENCHMARK 7**  
CHISELED SQUARE  
N: 417646.066  
E: 2558526.818  
ELEV: 630.406  
(LOCATED ON THE CURB ON THE EAST SIDE OF S MAYBELLE AVE AT W 22ND PL)

**BENCHMARK 8**  
CHISELED SQUARE  
N: 417636.686  
E: 2558109.458  
ELEV: 636.239  
(LOCATED ON THE CURB AT THE SOUTHEAST CURB INLET AT W 22ND PLUS NOGALES AVE)

STA 80+16.87  
BEGIN WEST 22ND PLACE ROADWAY CONSTRUCTION  
PROJ # 148170  
N 417678.21  
E 2558106.12

STA 84+07.05  
END WEST 22ND PLACE ROADWAY CONSTRUCTION  
PROJ # 148170  
N 417686.04  
E 2558496.26



**CAUTION**  
NOTICE TO CONTRACTOR

THE CONTRACTOR IS SPECIFICALLY CAUTIONED THE LOCATION AND ELEVATION OF EXISTING UTILITIES AS SHOWN ON THESE PLANS ARE BASED ON RECORDS OF THE VARIOUS UTILITY COMPANIES AND MEASUREMENTS TAKEN IN THE FIELD. THE INFORMATION IS NOT TO BE RELIED ON AS BEING EXACT OR COMPLETE. THE CONTRACTOR MUST CALL THE LOCAL UTILITY LOCATION CENTER AT LEAST 72 HOURS BEFORE ANY EXCAVATION TO REQUEST EXACT FIELD LOCATIONS OF THE UTILITIES

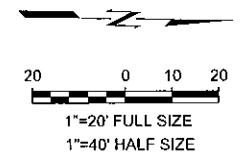
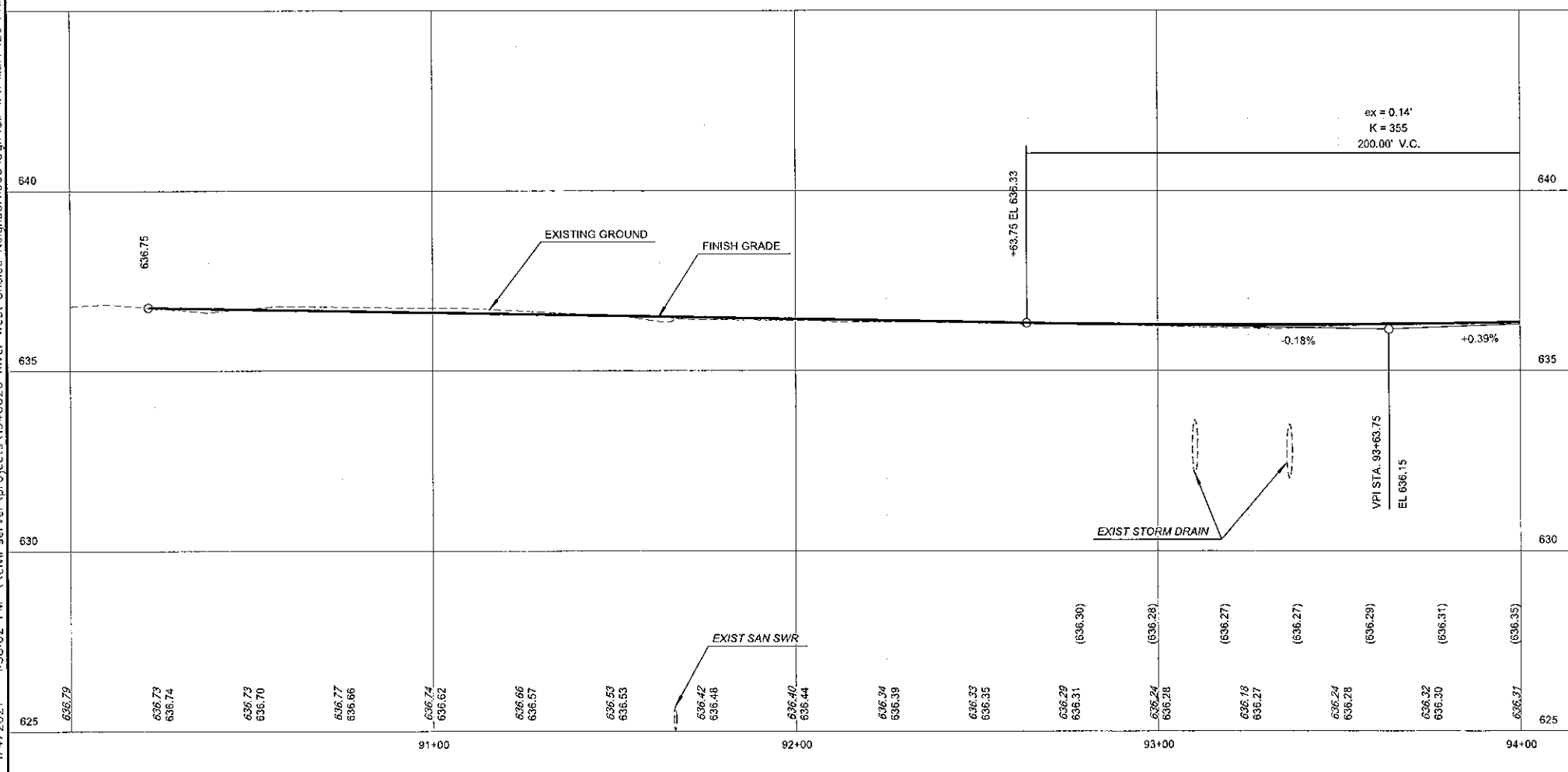
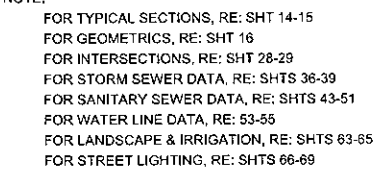
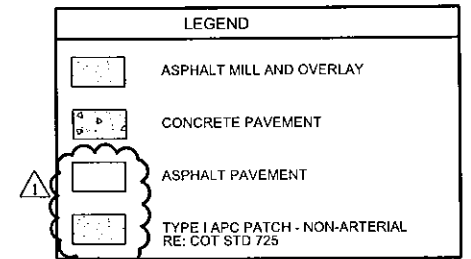
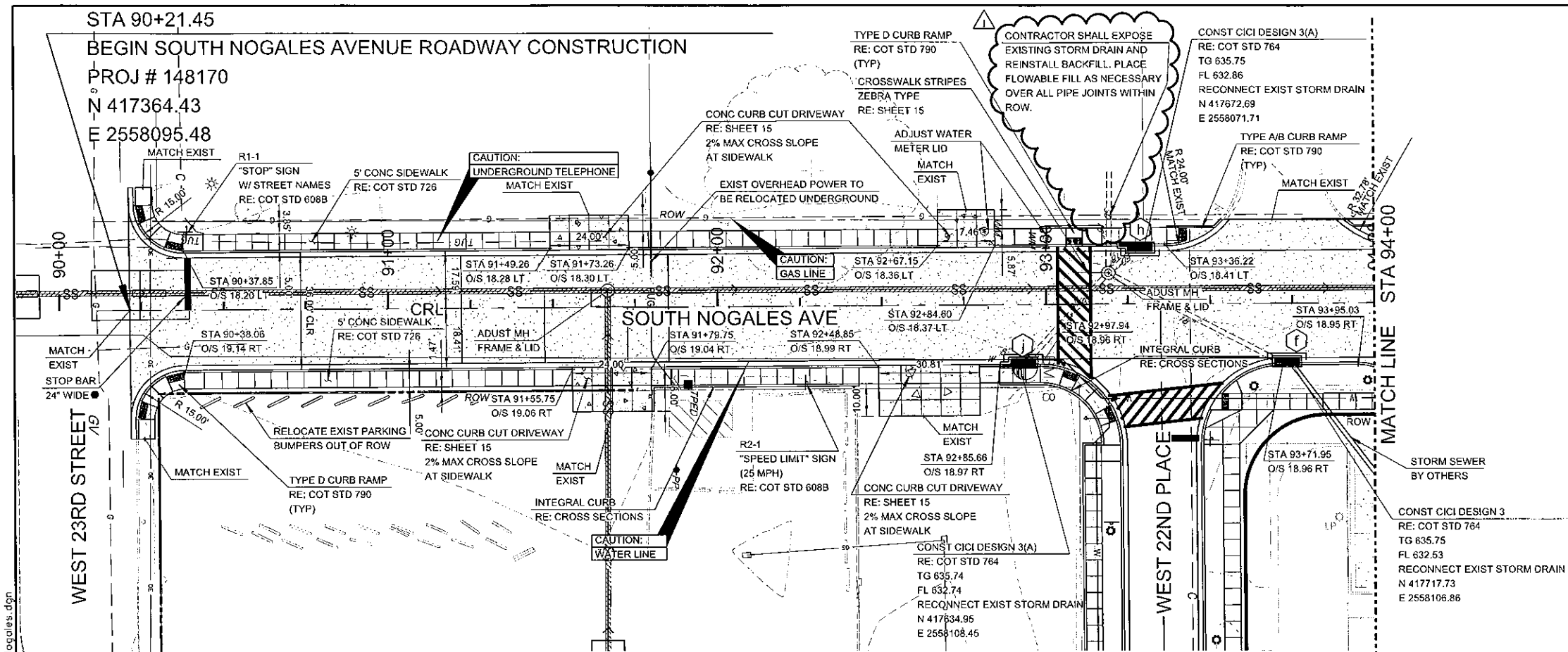
**BEFORE YOU DIG**  
1-800-322-OKIE  
CALL OKIE



01/04/2021  
OKLAHOMA CA # 400  
EXP DATE 6/30/21

WEST 22ND PLACE STA 80+18.37 TO STA 84+19.03									
RIVER WEST CNI PUBLIC IMPROVEMENT CONTRACT 4									
CITY OF TULSA, OKLAHOMA ENGINEERING SERVICES DEPARTMENT									
PLANS AND ESTIMATES PREPARED BY: <i>wallace</i>									
WALLACE ENGINEERING STRUCTURAL CONSULTANTS INC. 123 N. MARTIN LUTHER KING JR. B.V.O. TULSA, OK 74103 (918) 584-5858									
REVISION	BY	DATE	PLAN SCALE:	DRAWN	MOE	11/20/20	APPROVED:		
ADDENDUM 2	JR	1/4/21	1"=20'-0"	DESIGNED	JR	11/20/20			
				SURVEY	ARJ	11/20/20			
				PROJ MGR.					
			PROFILE SCALE:	LEAD MGR.			CITY ENGINEER		
			HORIZONTAL:						
			1"=20'-0"	FIELD MGR.					
			VERTICAL:	RECOVERED:					
			1"=2'-0"	DESIGN MANAGER			DATE: 11/20/2020		
			FILE:	DRAWING:			SHEET 24 OF 69 SHEETS		
			ATLAS PAGE NO.: 35						





**CAUTION**  
**NOTICE TO CONTRACTOR**

THE CONTRACTOR IS SPECIFICALLY CAUTIONED THE LOCATION AND ELEVATION OF EXISTING UTILITIES AS SHOWN ON THESE PLANS ARE BASED ON RECORDS OF THE VARIOUS UTILITY COMPANIES AND MEASUREMENTS TAKEN IN THE FIELD.

THE INFORMATION IS NOT TO BE RELIED ON AS BEING EXACT OR COMPLETE. THE CONTRACTOR MUST LOCATE THE LOCAL UTILITY LOCATION CENTER AT LEAST 72 HOURS BEFORE ANY EXCAVATION TO REQUEST EXACT FIELD LOCATIONS OF THE UTILITIES

SOUTH NOGALES AVE  
STA 90+21.45 TO STA 94+00.00

RIVER WEST CNI PUBLIC IMPROVEMENT  
CONTRACT 4

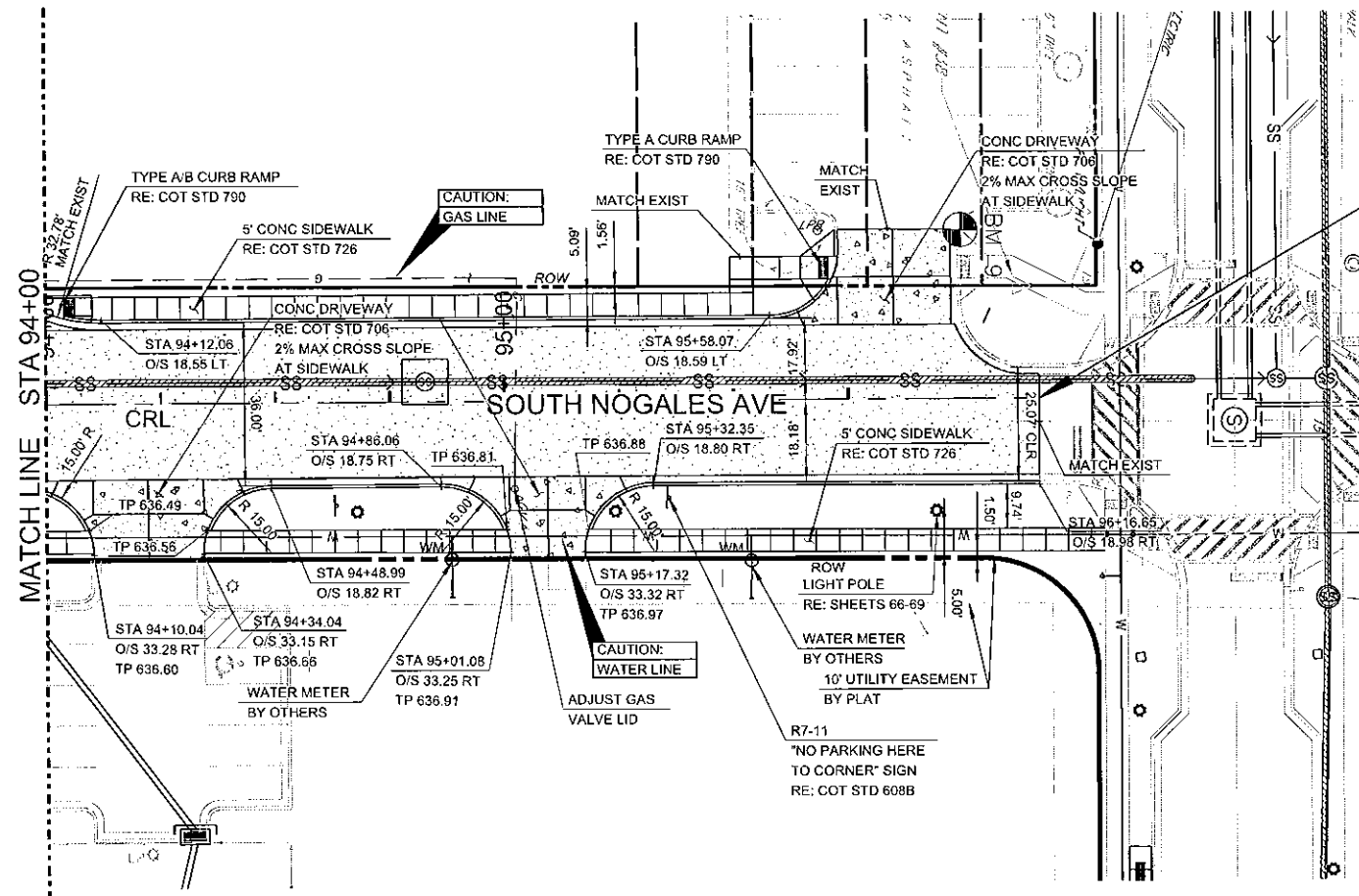
CITY OF TULSA, OKLAHOMA  
ENGINEERING SERVICES DEPARTMENT

PLANS AND ESTIMATES PREPARED BY:  
*wallace* WALLACE ENGINEERING  
STRUCTURAL CONSULTANTS INC.  
123 N. MARTIN LUTHER KING JR. BLVD.  
TULSA, OK 74103  
(918) 584-8858

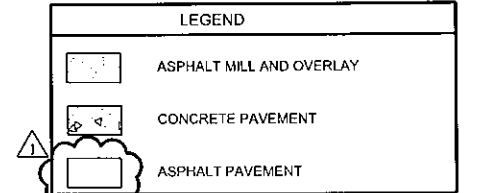
01/04/2021 OKLAHOMA CA #1480  
EXP DATE 6/30/21

REVISION		BY	DATE	PLAN SCALE:	DRAWN	VDE	11/20/20	APPROVED:
ADDENDUM 2		JR	11/2/21	1"=20'-0"	DESIGNED	JR	11/20/20	
					SURVEY	ARJ	11/20/20	
				PROFILE SCALE:	PROJ MGR.			
				HORIZONTAL:	LEAD MGR.			
				VERTICAL:	FIELD MGR.			
				1"=2'-0"	RECOMMENDED:			
					DESIGN MANAGER			CITY ENGINEER
				FILE:	DRAWING:		DATE:	11/20/2020
				ATLAS PAGE NO.: 35			SHEET	26 OF 69 SHEETS

12/31/2020 9:35:34 AM \\civil-server\projects\1940026 River West Choice Neighborhood\Drawings\27-PNP-Nogales.dgn

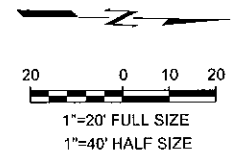


STA 96+16.65  
END SOUTH NOGALES AVENUE ROADWAY CONSTRUCTION  
PROJ # 148170  
N 417959.52  
E 2558083.82



**BENCHMARK 8**  
CHISELED SQUARE  
N: 417936.686  
E: 2558109.458  
ELEV: 636.239  
(LOCATED ON THE CURB AT THE SOUTHEAST CURB INLET AT W 22ND PLUS NOGALES AVE)

**BENCHMARK 9**  
CHISELED SQUARE  
N: 417941.902  
E: 2558046.931  
ELEV: 637.569  
(LOCATED ON THE NORTH CURB OF THE DRIVEWAY AT S NOGALES AVE AND W 22ND ST)



**CAUTION**  
NOTICE TO CONTRACTOR

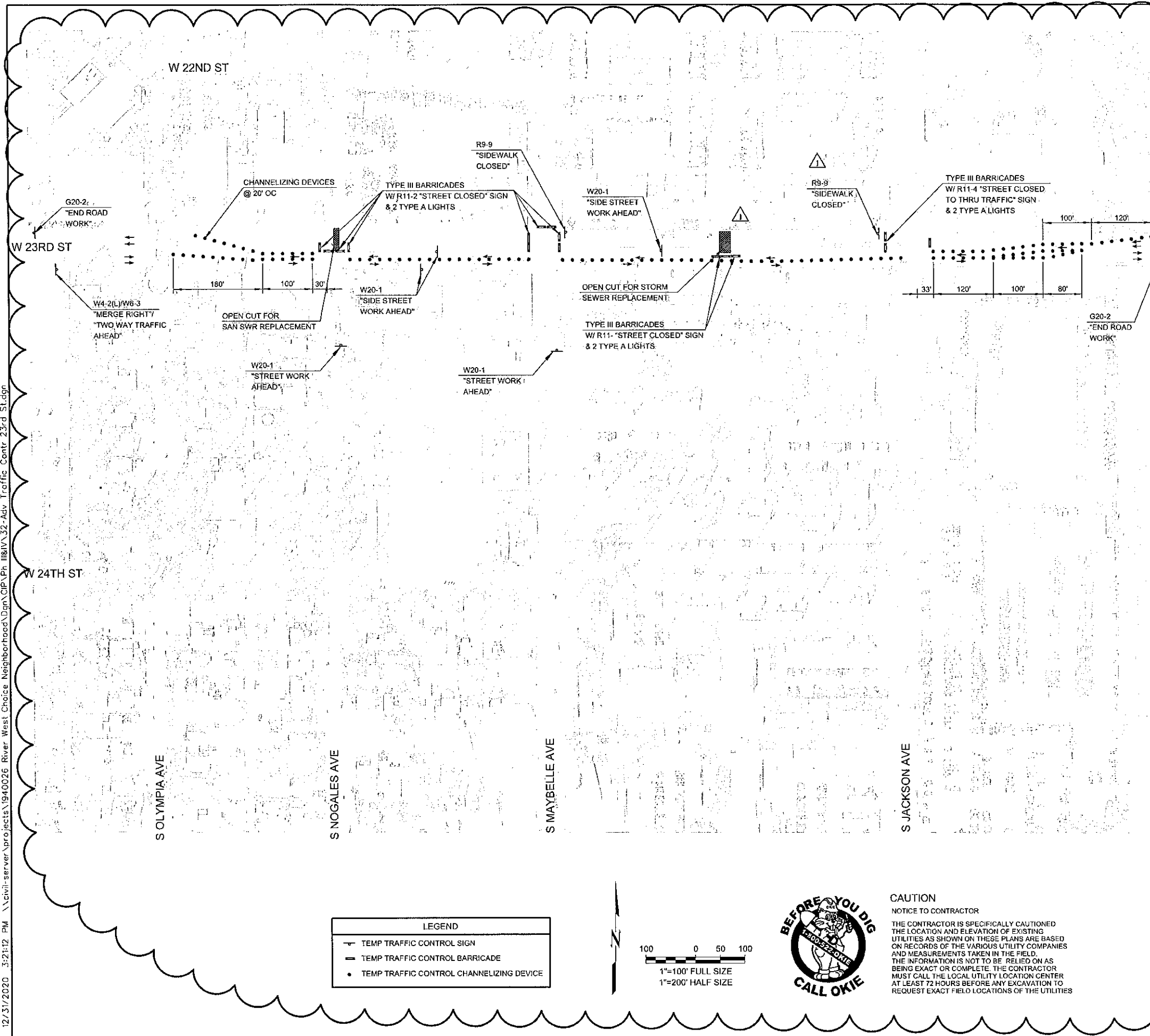
THE CONTRACTOR IS SPECIFICALLY CAUTIONED THE LOCATION AND ELEVATION OF EXISTING UTILITIES AS SHOWN ON THESE PLANS ARE BASED ON RECORDS OF THE VARIOUS UTILITY COMPANIES AND MEASUREMENTS TAKEN IN THE FIELD. THE INFORMATION IS NOT TO BE RELIED ON AS BEING EXACT OR COMPLETE. THE CONTRACTOR MUST CALL THE LOCAL UTILITY LOCATION CENTER AT LEAST 72 HOURS BEFORE ANY EXCAVATION TO REQUEST EXACT FIELD LOCATIONS OF THE UTILITIES



01/04/2021  
OKLAHOMA CA 8'460  
EXP DATE 6/30/21

SOUTH NOGALES AVE STA 94+00.00 TO STA 96+16.65			
RIVER WEST CNI PUBLIC IMPROVEMENT CONTRACT 4			
CITY OF TULSA, OKLAHOMA ENGINEERING SERVICES DEPARTMENT			
PLANS AND ESTIMATES PREPARED BY: <i>wallace</i>		WALLACE ENGINEERING STRUCTURAL CONSULTANTS INC. 123 N. MARTIN LUTHER KING JR. BLVD. TULSA, OK 74103 (918) 584-5858	
REVISION	BY	DATE	APPROVED:
ADDENDUM 2	JR	1/4/21	
PLAN SCALE:		DRAWN	VDE
1"=20'-0"		DESIGNED	JR
		SURVEY	ARJ
PROFILE SCALE:		PROJ MGR.	
HORIZONTAL:		LEAD MGR.	
1"=20'-0"		FIELD MGR.	
VERTICAL:		RECOMMENDED:	
1"=2'-0"		DESIGN MANAGER	
FILE:		DRAWING:	CITY ENGINEER
ATLAS PAGE NO.: 35		DATE:	11/20/2020
		SHEET 27 OF 69 SHEETS	

12/31/2020 3:21:12 PM \\civil-server\projects\1940026 River West Choice Neighborhood\Drawings\32-Adv Traffic Contr 23rd St.dgn



LEGEND	
	TEMP TRAFFIC CONTROL SIGN
	TEMP TRAFFIC CONTROL BARRICADE
	TEMP TRAFFIC CONTROL CHANNELIZING DEVICE



**CAUTION**  
NOTICE TO CONTRACTOR  
THE CONTRACTOR IS SPECIFICALLY CAUTIONED THE LOCATION AND ELEVATION OF EXISTING UTILITIES AS SHOWN ON THESE PLANS ARE BASED ON RECORDS OF THE VARIOUS UTILITY COMPANIES AND MEASUREMENTS TAKEN IN THE FIELD. THE INFORMATION IS NOT TO BE RELIED ON AS BEING EXACT OR COMPLETE. THE CONTRACTOR MUST CALL THE LOCAL UTILITY LOCATION CENTER AT LEAST 72 HOURS BEFORE ANY EXCAVATION TO REQUEST EXACT FIELD LOCATIONS OF THE UTILITIES

#### TRAFFIC CONTROL NOTES

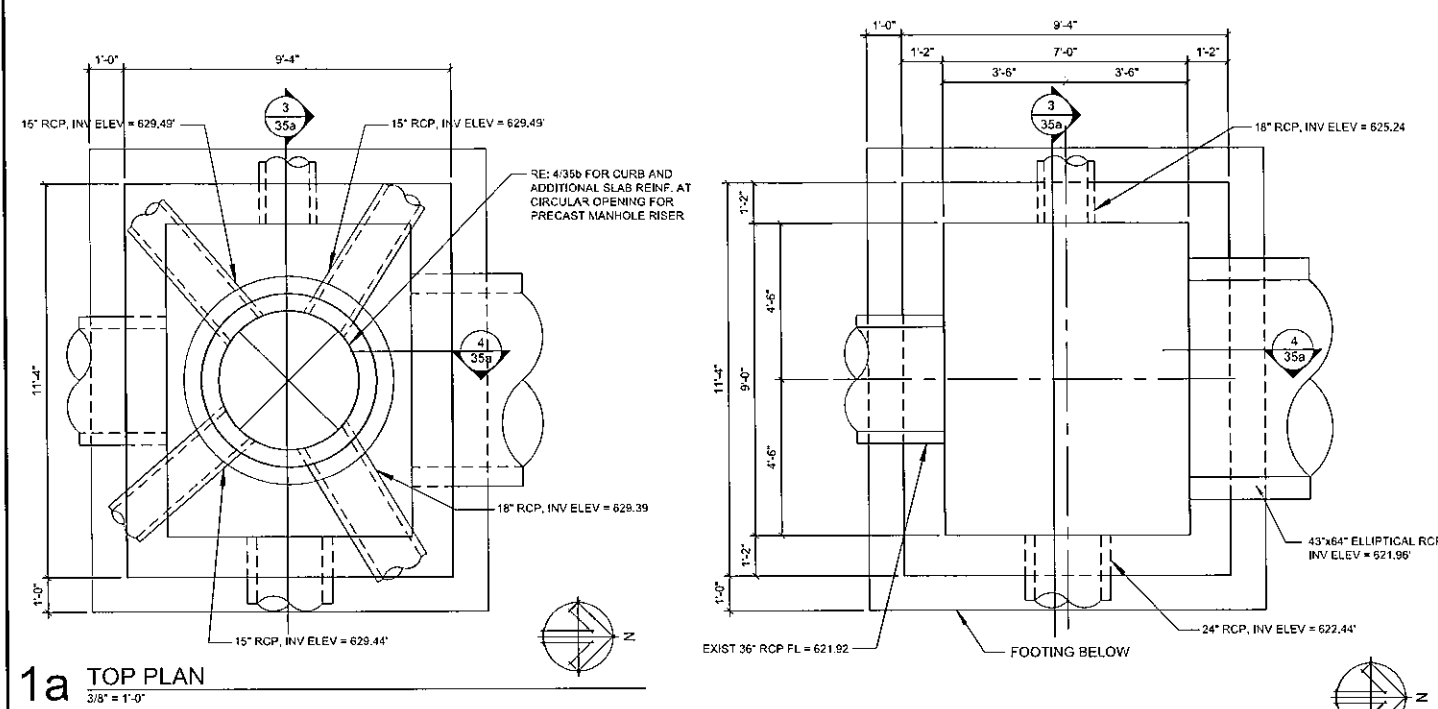
1. THE CONTRACTOR SHALL WORK IN COOPERATION WITH THE CITY OF TULSA TO ESTABLISH, INSTALL, MAINTAIN AND OPERATE COMPLETE, ADEQUATE AND SAFE TRAFFIC CONTROLS DURING THE ENTIRE CONSTRUCTION PERIOD. THE CONTRACTOR SHALL PLACE TRAFFIC CONTROL DEVICES WITHIN THE VICINITY OF THE CONSTRUCTION AS REQUIRED. ALL TRAFFIC CONTROL DEVICES SHALL BE IN ACCORDANCE WITH THE LATEST EDITION OF THE MANUAL OF UNIFORM TRAFFIC CONTROL DEVICES (MUTCD) AND APPROVED BY THE CITY OF TULSA.
2. LOCAL TRAFFIC SHALL BE MAINTAINED THROUGHOUT THE PROJECT AT ALL TIMES. ALL PUBLIC AND PRIVATE STREETS AND DRIVES SHALL BE ACCESSIBLE FOR LOCAL TRAFFIC FROM ANY DETOUR DURING CONSTRUCTION OF THIS PROJECT. VARIANCES TO THIS REQUIREMENT SHALL BE MADE THROUGH THE PUBLIC WORKS DEPARTMENT OF THE CITY OF TULSA.
3. CONTRACTOR SHALL SEQUENCE CONSTRUCTION SO LANE CLOSURES WILL BE KEPT TO A MINIMUM AND BE CLOSED FOR AS SHORT A DURATION AS POSSIBLE. ACCESS TO RESIDENTS' DRIVEWAYS AND FOR EMERGENCY VEHICLES, SCHOOL BUSES, ETC SHALL BE MAINTAINED EXCEPT WHEN CLOSURE IS ABSOLUTELY NECESSARY. PROPER NOTIFICATION MUST BE GIVEN PRIOR TO ANY CLOSURE.
4. LOCAL TRAFFIC, IE A RESIDENT WITH DRIVEWAY ON THE STREET BEING CONSTRUCTED, SHALL BE ALLOWED VEHICULAR ACCESS TO AND FROM THEIR DRIVEWAY AT ALL TIMES EXCEPT WHEN THE DRIVEWAY IS BEING DEMOLISHED OR RE-CONSTRUCTED OR AT SUCH TIMES WHEN EXCAVATION OR PLACEMENT OF ROADWAY MATERIALS IS OCCURRING IMMEDIATELY IN FRONT OF THE DRIVEWAY. 18-24 HOURS PRIOR TO THESE ACTIVITIES, THE CONTRACTOR SHALL ADVISE THE RESIDENT(S) THAT ACCESS TO THE DRIVEWAY SHALL BE RESTRICTED. THE CONTRACTOR SHALL ADVISE THE RESIDENT THROUGH PERSONAL CONTACT, OR THE USE OF DOOR HANGERS WHICH WILL OUTLINE SPECIFICALLY THE BEGINNING DATE, TIME AND DURATION THE DRIVEWAY WILL BE INACCESSIBLE. DOOR HANGERS SHALL PROVIDE A PHONE NUMBER AND CONTACT PERSON WHICH THE RESIDENT MAY CONTACT IN CASE OF QUESTIONS. THE CONTRACTOR SHALL BE RESPONSIBLE TO ADVISE RESIDENTS EACH DIFFERENT PERIOD IN WHICH THE DRIVEWAY IS TO BE INACCESSIBLE.
5. UNDER NO CIRCUMSTANCES SHALL A STREET UNDER CONSTRUCTION BE INACCESSIBLE OVER A WEEKEND OR HOLIDAY. THE CONTRACTOR SHALL SCHEDULE WORK SO THAT, AS A MINIMUM, RESIDENCES WITH DRIVEWAYS ON THE STREET BEING CONSTRUCTED, SHALL BE ABLE TO ACCESS THEIR DRIVEWAY FROM A COMPACTED AGGREGATE BASE SURFACE DURING A WEEKEND PERIOD OR HOLIDAY. A WEEKEND PERIOD IS DEFINED AS BEING FROM 5:00 PM ON FRIDAY TO 8:00 AM ON MONDAY.
6. THE CONTRACTOR SHALL BE RESPONSIBLE FOR MAINTENANCE OF ALL CONSTRUCTION SIGNAGE AND BARRICADES INCLUDING, BUT NOT LIMITED TO, WASHING, REPLACING AND REPOSITIONING THE DEVICES. THE CONTRACTOR SHALL ALSO PROVIDE AND INSTALL ALL TRAFFIC CONTROL DEVICES DEEMED NECESSARY BY THE CITY OF TULSA, DUE TO CHANGING TRAFFIC CONDITIONS.
7. NO BARRICADES SHALL BE PLACED IN THE ROADWAY UNTIL ALL ADVANCE WARNING SIGNAGE IS IN PLACE.
8. ROADSIDE HAZARDS SHALL BE COMPLETELY BARRICADED AROUND THE PERIMETER FOR THE SAFETY OF PEDESTRIANS AS WELL AS VEHICLES.
9. ALL CHANNELING DEVICES SHALL BE WEIGHED DOWN WITH A NON-HAZARDOUS MATERIAL IF DEEMED NECESSARY AND SO DIRECTED BY THE CITY OF TULSA.
10. ALL ADVANCE WARNING SIGNS SHALL REQUIRE ONE TYPE A LIGHT; ALL TYPE III BARRICADES SHALL REQUIRE TWO TYPE A LIGHTS; ALL CHANNELING DEVICES SHALL REQUIRE ONE TYPE C LIGHT.
11. ALL SIGNAGE SHALL BE SUBMITTED TO AND APPROVED BY THE CITY OF TULSA.
12. REFERENCE MUTCD FOR ADVANCE WARNING SIGNS AND PLACEMENT.
13. USE TYPE III BARRICADES FOR LANE CLOSURE WITH ACTIVE WORK ZONES.
14. PLACE TUBE CHANNELIZERS AT 20' CENTERS THRU ACTIVE WORK ZONES.



01/04/2021

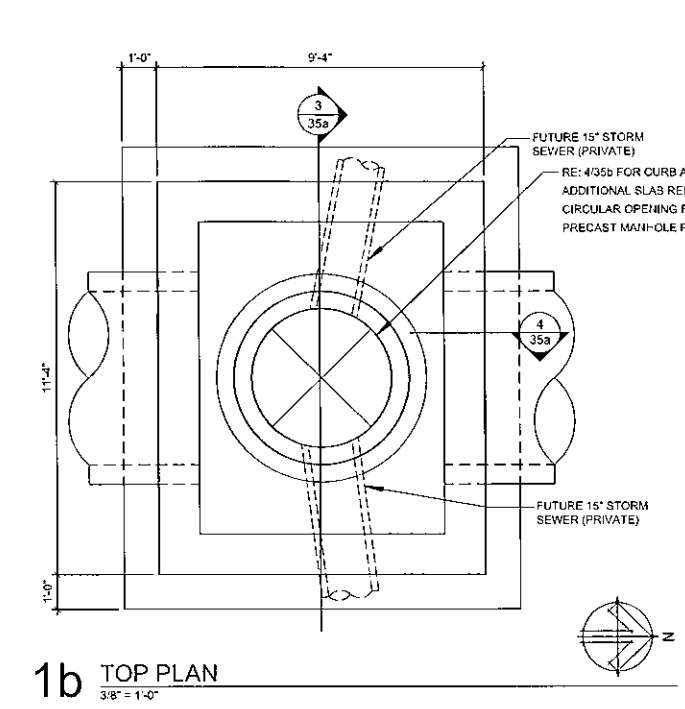
ADVANCED TRAFFIC CONTROL W 23RD STREET, PHASE II				RIVER WEST CNI PUBLIC IMPROVEMENT CONTRACT 4				CITY OF TULSA, OKLAHOMA ENGINEERING SERVICES DEPARTMENT			
PLANS AND ESTIMATES PREPARED BY: <i>wallace</i>				WALLACE ENGINEERING STRUCTURAL CONSULTANTS INC. 123 N. MARTIN LUTHER KING JR. BLVD. TULSA, OK 74103 (918) 564-5555				APPROVED:			
REV/SION	BY	DATE	PLAN SCALE	DRAWN	MOE	11/20/20	CITY ENGINEER	DATE: 11/20/2020 SHEET 32 OF 68 SHEETS			
ADDENDUM 2	JR	1/4/21	1"=100'-0"	DESIGNED	JR	11/20/20					
				SURVEY	ARJ	11/20/20					
				PROJ. MGR.							
			PROFILE SCALE	LEAD MGR.							
			HORIZONTAL:	FIELD MGR.							
			VERTICAL:	RECOMMENDED							
			N.A.	DESIGN MANAGER							
			FILE:	DRAWING:							
			ATLAS PAGE NO.: 35								

1/4/2021 11:00:45 AM \\civil-server\projects\1940026 River West Choice Neighborhood\Drawings\35a-Storm Drain Details.dgn

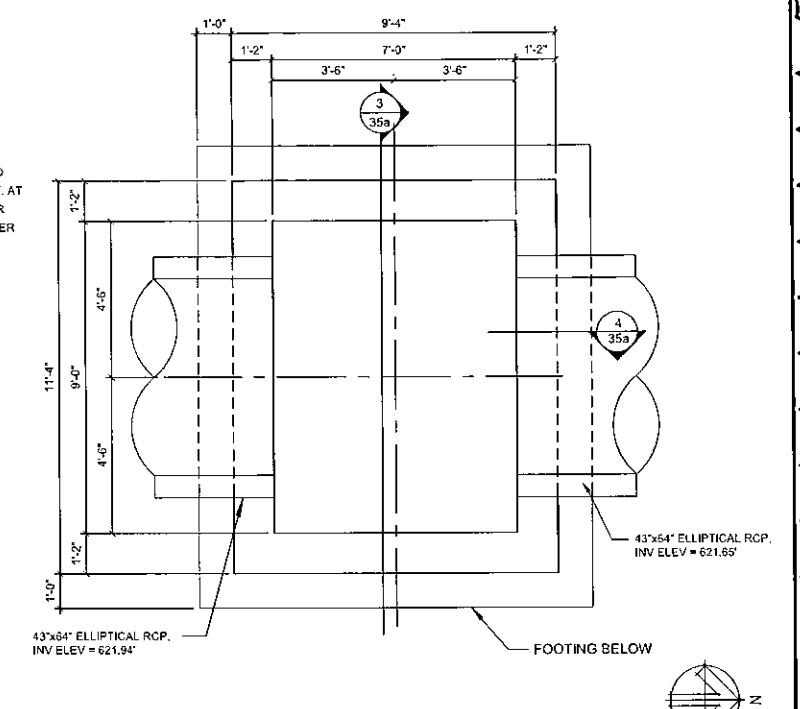


1a TOP PLAN  
3/8" = 1'-0"

2a SECTIONAL PLAN  
3/8" = 1'-0"

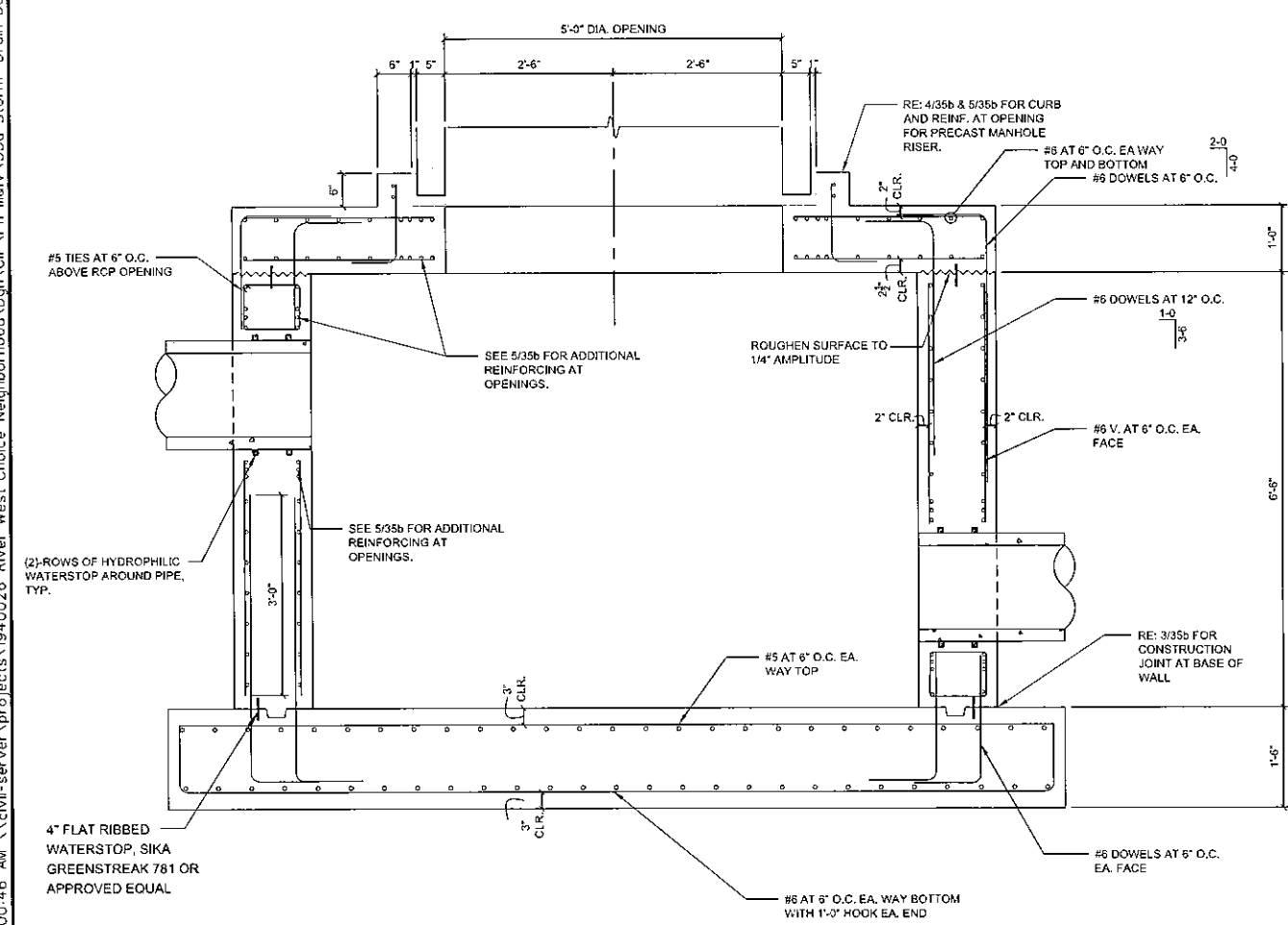


1b TOP PLAN  
3/8" = 1'-0"

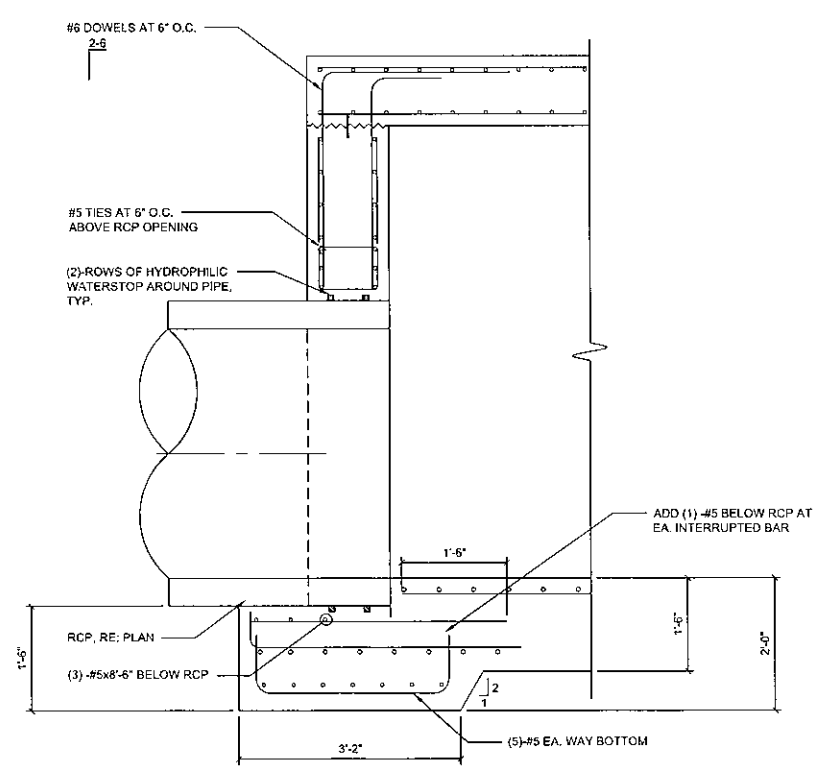


2b SECTIONAL PLAN  
3/8" = 1'-0"

ESTIMATED QUANTITIES PER JUNCTION BOX	
CONCRETE	560 C.F. 21 C.Y.
REBAR	7800 LBS



3 SECTION  
3/4" = 1'-0"



4 SECTION  
3/4" = 1'-0"

- NOTES**
- DESIGN IN ACCORDANCE WITH 2012 AASHTO LRFD BRIDGE DESIGN SPECIFICATIONS, 6TH EDITION, UNLESS NOTED OTHERWISE.
  - DESIGNED FOR HL-93 LOADING.
  - ALL STRUCTURAL CONCRETE TO BE A MINIMUM COMPRESSIVE STRENGTH OF 4KSI AT 28 DAYS, UNLESS NOTED OTHERWISE.
  - ALL REINFORCING BARS SHALL BE GRADE 60.
  - ALL EXPOSED CORNERS AND EDGES SHALL HAVE 3/4" CHAMFER.
  - ALL REINFORCING SHALL HAVE A 2" MINIMUM CLEAR COVER, UNLESS NOTED OTHERWISE.
  - FOUNDATIONS ARE DESIGNED ON AN ALLOWABLE NET BEARING PRESSURE OF 2200 PSF. FOUNDATION SHALL BEAR ON MEDIUM DENSE TO DENSE SANDY SOILS. DISTURBED, LOOSE MATERIALS SHALL BE DENSIFIED USING SMOOTH DRUM ROLLER COMPACTION EQUIPMENT IN STATIC MODE. FOUNDATION BEARING SOILS SHALL BE EVALUATED AND APPROVED BY THE OWNERS GEOTECHNICAL REPRESENTATIVE PRIOR TO PLACEMENT OF FOUNDATIONS.
  - CONCRETE, REINFORCING STEEL, AND ALL ITEMS USED TO CONSTRUCT STORM JUNCTION BOX, EXCLUDING THE MANHOLE RISER, SHALL BE INCLUDED IN THE UNIT BID COST OF JUNCTION BOX



01/04/2021

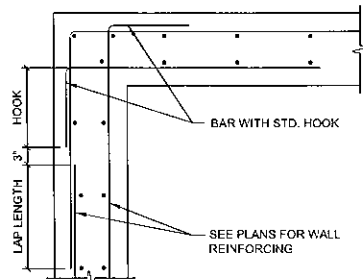
JUNCTION BOX SECTION AND DETAILS				RIVER WEST CNI PUBLIC IMPROVEMENT CONTRACT 4			
CITY OF TULSA, OKLAHOMA ENGINEERING SERVICES DEPARTMENT				PLANS AND ESTIMATES PREPARED BY: wallace			
WALLACE ENGINEERING STRUCTURAL CONSULTANTS INC. 123 N. MARTIN LUTHER KING JR. BLVD. TULSA, OK 74103 (918) 584-3355				REVISION			
11/20/20				ADDENDUM 2	JR	11/21	11/21
11/20/20				PLAN SCALE: N.A.			
11/20/20				DRAWN: DESIGNED: SURVEY: PROJ MGR: LEAD MGR: FIELD MGR: RECOMMENDED: DESIGN MANAGER			
11/20/20				FILE: DRAWING: DATE: 11/20/2020			
11/20/20				ATLAS PAGE NO.: 35 SHEET 35a OF 69 SHEETS			

CONCRETE REINFORCING LAP SCHEDULE		
BAR SIZE	LAP LENGTH (f <sub>c</sub> =4000psi)	
	TOP BARS (NOTE 1)	OTHER
#3	18"	18"
#4	24"	18"
#5	28"	20"
#6	30"	24"
#7	43"	33"
#8	48"	38"
#9	60"	46"
#10	74"	58"

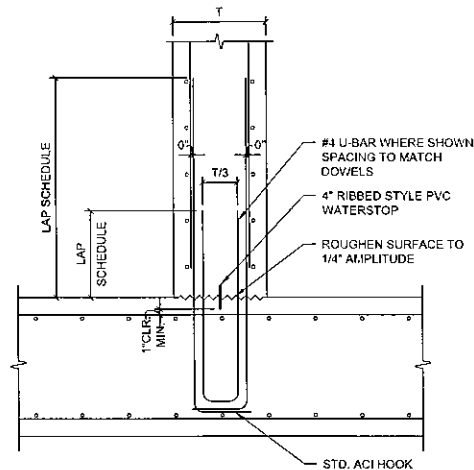
NOTES:

- "TOP BARS" ARE HORIZONTAL BARS WITH MORE THAN 12 INCHES OF FRESH CONCRETE CAST BELOW THE SPLICE.
- MINIMUM CLEAR COVER = 2".
- MINIMUM BAR SPACING = 6".

# 1 CONCRETE REINFORCING LAP SCHEDULE N.T.S.

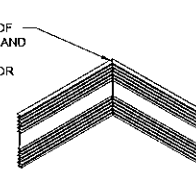


# 2 BAR DETAILS AT WALL CORNER 3/4" = 1'-0"

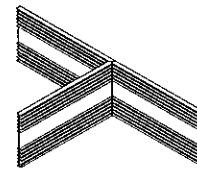


# 3 WALL CONSTRUCTION JOINT AT BASE 3/4" = 1'-0"

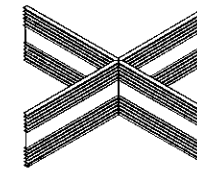
MITER CORNERS OF VERTICAL JOINTS AND WELD SIMILAR AS SHOWN BELOW FOR IN-PLANE JOINTS



VERTICAL ELL

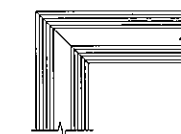


VERTICAL TEE

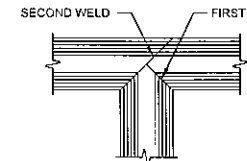


VERTICAL CROSS

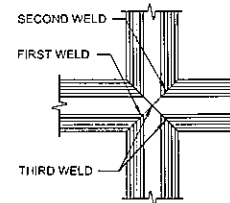
NOTE: ALL WELDS SHALL BE PER WATERSTOP MANUFACTURER'S RECOMMENDATIONS.



FLAT ELL

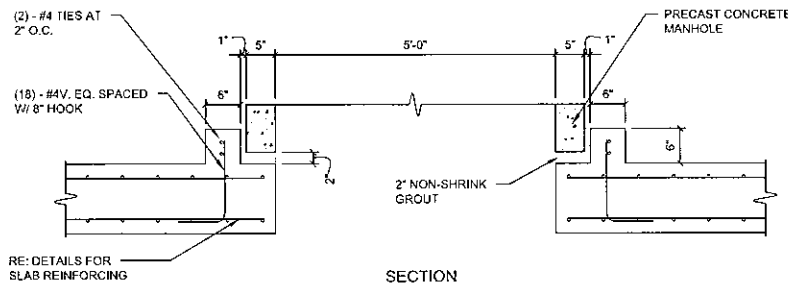
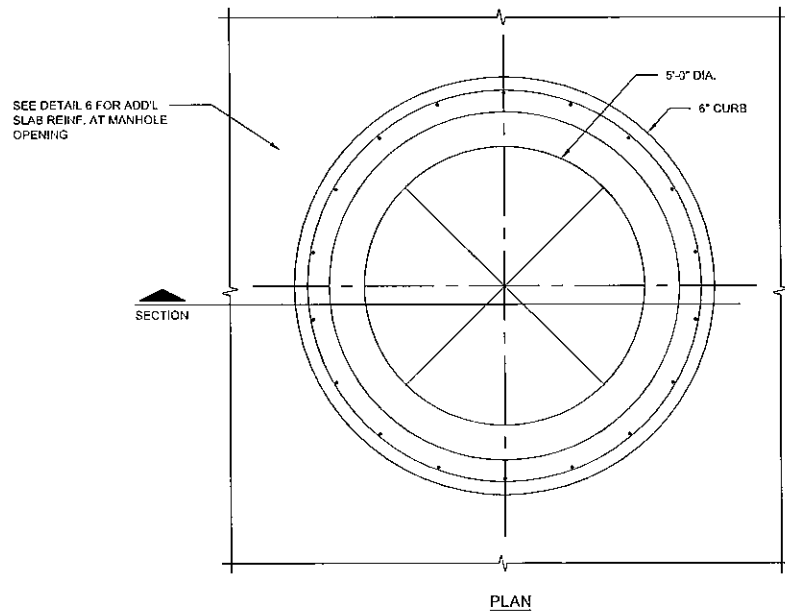


FLAT TEE



FLAT CROSS

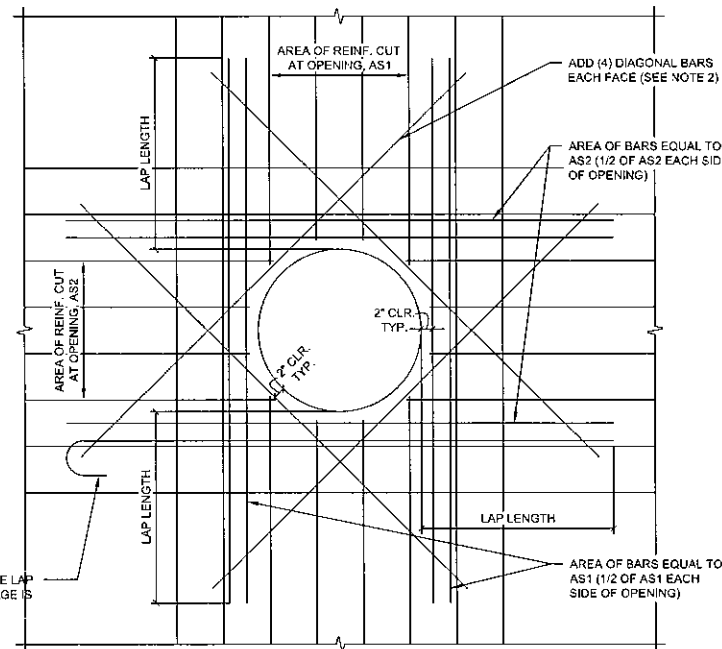
# 4 WATERSTOP JOINTS N.T.S.



NOTES:

- PRECAST MANHOLE SHALL NOT BE PLACED ON RCB SLAB UNTIL SLAB CONCRETE HAS REACHED ITS SPECIFIED DESIGN STRENGTH.

# 5 SECTION AT RCB SLAB / MANHOLE OPENING 3/4" = 1'-0"



NOTES:

- ADDITIONAL REINFORCING TO BE PLACED AT 3" O.C.
- DIAGONAL BARS TO MATCH HORIZONTAL REINF. LENGTH TO EQUAL OPENING DIA. AND (2) LAP SPLICE LENGTHS.
- DOWEL BARS INTO SLAB WHERE DISTANCE FROM INVERT OF OPENING TO TOP OF SLAB IS LESS THAN LAP SPLICE LENGTH.

# 6 REINFORCING AT CIRCULAR & MANHOLE OPENINGS 3/4" = 1'-0"

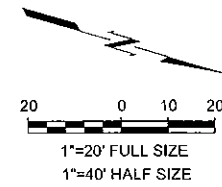
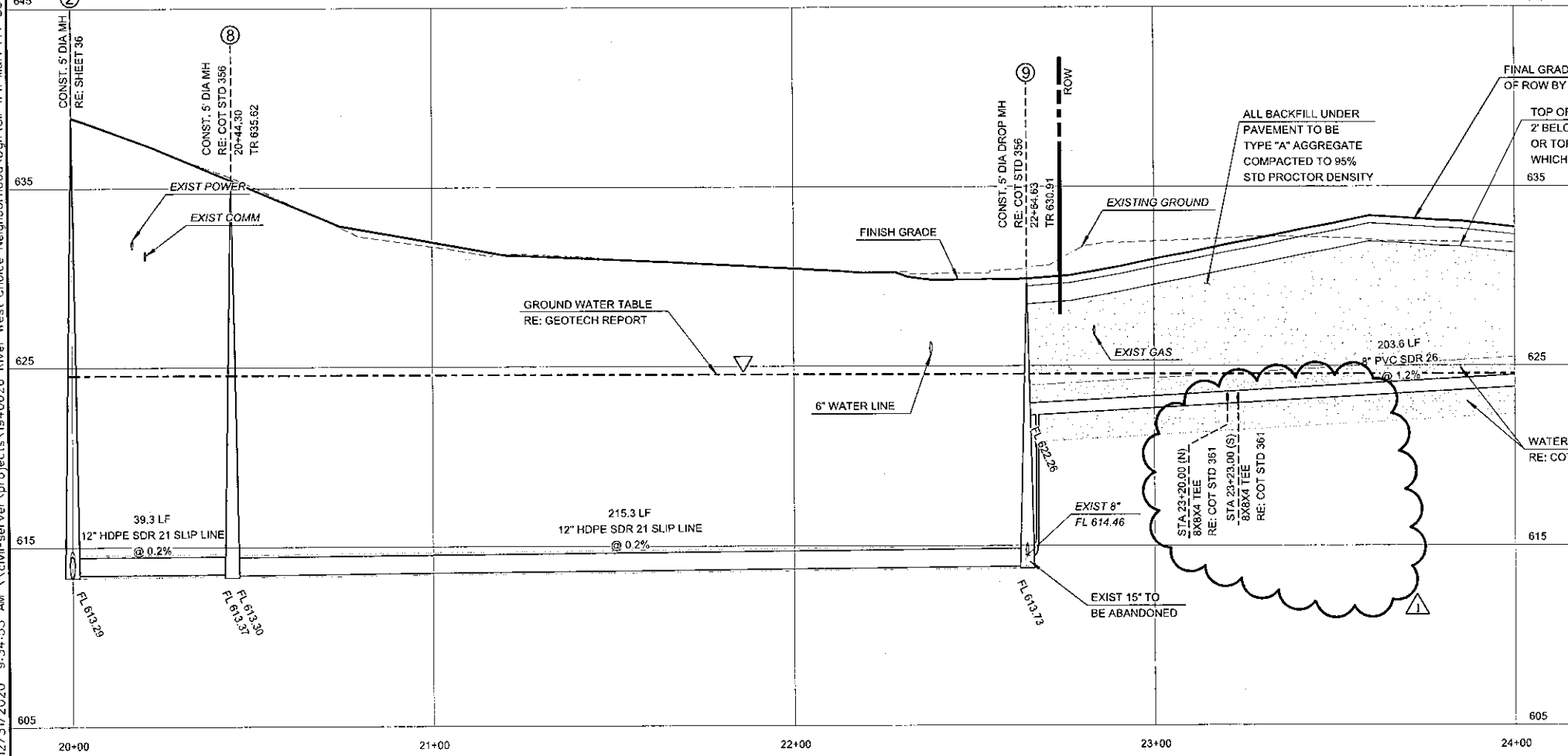
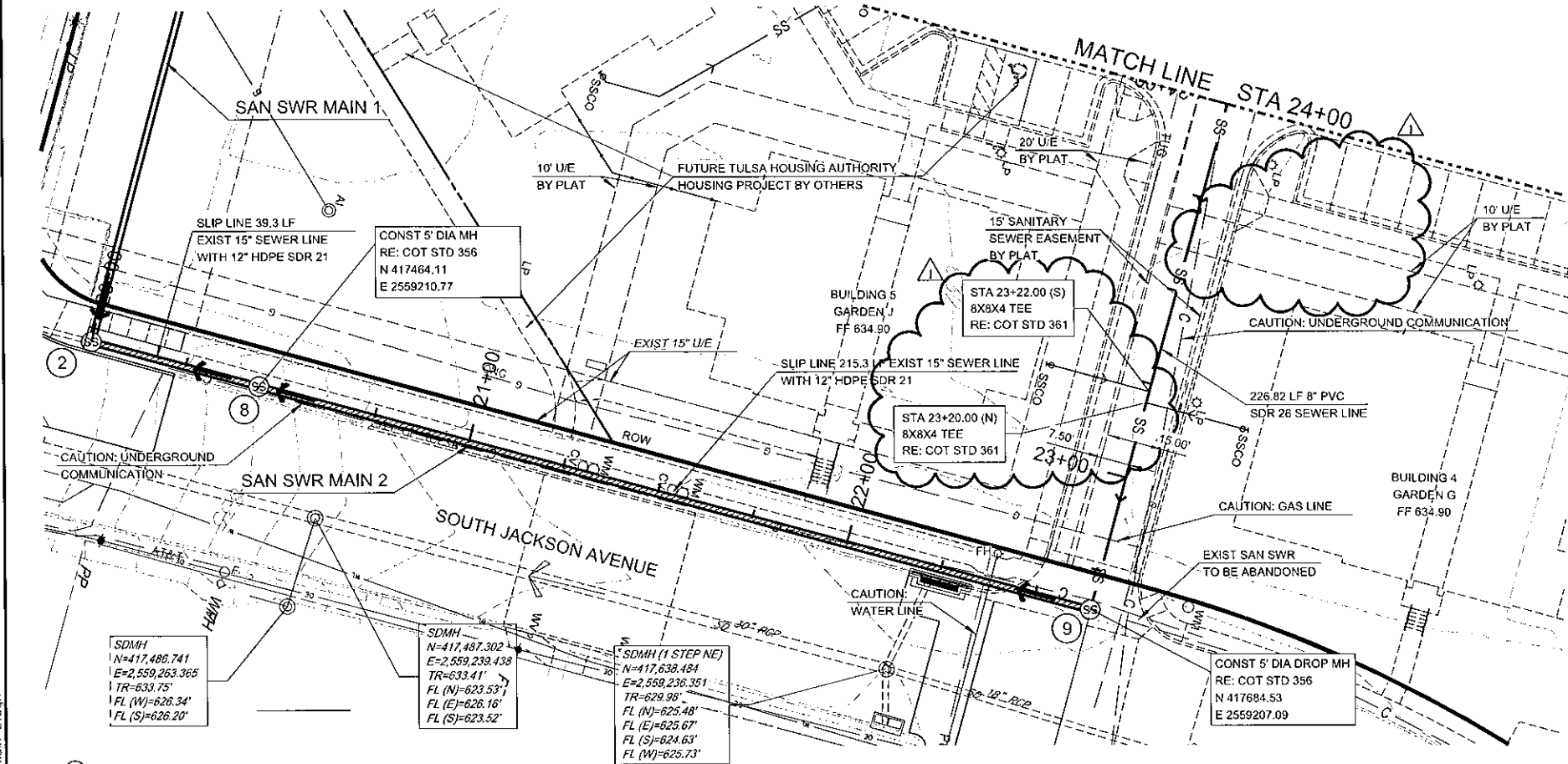


01/04/2021

JUNCTION BOX TYPICAL DETAILS				RIVER WEST CNI PUBLIC IMPROVEMENT CONTRACT 4			
CITY OF TULSA, OKLAHOMA ENGINEERING SERVICES DEPARTMENT				PLANS AND ESTIMATES PREPARED BY: wallace			
REVISION		BY	DATE	PLAN SCALE:	DRAWN	MDE	11/20/20
ADDENDUM 2		JR	1/4/21	N.A.	DESIGNED	JR	11/20/20
					SURVEY	ARJ	11/20/20
				PROFILE SCALE:	PROJ MGR.		
				HORIZONTAL:	LEAD MGR.		
				N.A.	FIELD MGR.		
				VERTICAL:	RECOMMENDED:		
				N.A.	DESIGN MANAGER		
				FILE:	DRAWING:		DATE: 11/20/2020
				ATLAS PAGE NO.: 35			SHEET 35b OF 69 SHEETS



12/31/2020 9:34:53 AM \\civil-server\project\1940026 River West Choice Neighborhood\Drawings\47-SS-Main 2.dgn

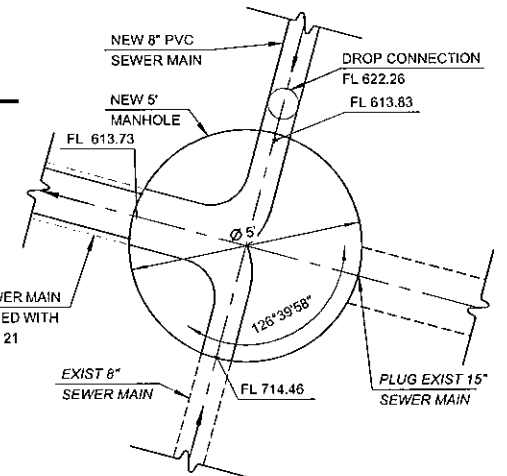
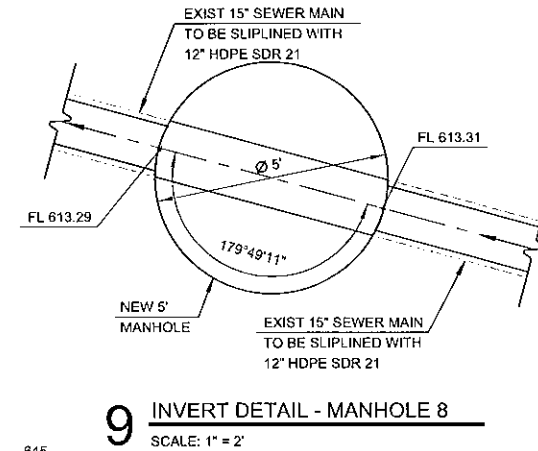


**CAUTION**  
NOTICE TO CONTRACTOR  
THE CONTRACTOR IS SPECIFICALLY CAUTIONED THE LOCATION AND ELEVATION OF EXISTING UTILITIES AS SHOWN ON THESE PLANS ARE BASED ON RECORDS OF THE VARIOUS UTILITY COMPANIES AND MEASUREMENTS TAKEN IN THE FIELD. THE INFORMATION IS NOT TO BE RELIED ON AS BEING EXACT OR COMPLETE. THE CONTRACTOR MUST CALL THE LOCAL UTILITY LOCATION CENTER AT LEAST 72 HOURS BEFORE ANY EXCAVATION TO REQUEST EXACT FIELD LOCATIONS OF THE UTILITIES

MINIMUM TRENCH WIDTH FOR PVC SANITARY SEWER INSTALLED BELOW GROUNDWATER LEVEL WITH WATER TABLE CRADLE PER COT STD. 367	
PIPE I.D.	MIN TRENCH WIDTH & EXCAVATION PAY WIDTH
8-12"	3'-0"
14"-18"	4'-6"

**BENCHMARK 1**  
CHISELED SQUARE  
N: 417667.574  
E: 2559185.253  
ELEV: 631.551  
(LOCATED ON THE NORTH CURB OF THE SECOND DRIVEWAY ON THE EAST SIDE OF S JACKSON AVE NORTH OF W 23RD ST)

**BENCHMARK 10**  
SSMH LID  
N: 417464.378  
E: 2559210.585  
ELEV: 635.450  
(LOCATED ON THE EAST SIDE OF S JACKSON AVE NORTH OF W 23RD ST)



**9 INVERT DETAIL - MANHOLE 8**  
SCALE: 1" = 2'

**10 INVERT DETAIL - MANHOLE 9**  
SCALE: 1" = 2'



01/04/2021

REVISION		BY	DATE	PLAN SCALE:	DRAWN	NDE	11/20/20	APPROVED:                                                                                                                                                                                                                                                                                                                                                                                                                                                                                                                                                                                                                                                                                                                                                                                                                                                                                                                                                                                                                                                                                                                                                                                                                                                                                                                                                                                                                                                                                                                                                                                                                                                                                                                                                                                                                                                                                                                                                                                                                                                                                                                                                                                                                                                                                                                                                                                                                                                                                                                            <
----------	--	----	------	-------------	-------	-----	----------	----------------------------------------------------------------------------------------------------------------------------------------------------------------------------------------------------------------------------------------------------------------------------------------------------------------------------------------------------------------------------------------------------------------------------------------------------------------------------------------------------------------------------------------------------------------------------------------------------------------------------------------------------------------------------------------------------------------------------------------------------------------------------------------------------------------------------------------------------------------------------------------------------------------------------------------------------------------------------------------------------------------------------------------------------------------------------------------------------------------------------------------------------------------------------------------------------------------------------------------------------------------------------------------------------------------------------------------------------------------------------------------------------------------------------------------------------------------------------------------------------------------------------------------------------------------------------------------------------------------------------------------------------------------------------------------------------------------------------------------------------------------------------------------------------------------------------------------------------------------------------------------------------------------------------------------------------------------------------------------------------------------------------------------------------------------------------------------------------------------------------------------------------------------------------------------------------------------------------------------------------------------------------------------------------------------------------------------------------------------------------------------------------------------------------------------------------------------------------------------------------------------------------------------------------------------------------------------------------------------------------------------------------------------------------------------------------------------------------------------------------------------------------------------------------------------------------------------------------------------------------------------------------------------------------------------------------------------------------------------------------------------------------------------------------------------------------------------------------------------------------------------------------------------------------------------------------------------------------------------------------------------------------------------------------------------------------------------------------------------------------------------------------------------------------------------------------------------------------------------------------------------------------------------------------------------------------------------------------------------------------------------------------------------------------------------------------------------------------------------------------------------------------------------------------------------------------------------------------------------------------------------------------------------------------------------------------------------------------------------------------------------------------------------------------------------------------------------------------------------------------------------------------------------------------------------------------------------------------------------------------------------------------------------------------------------------------------------------------------------------------------------------------------------------------------------------------------------------------------------------------------------------------------------------------------------------------------------------------------------------------------------------------------------------------------------------------------------------------------------------------------------------------------------------------------------------------------------------------------------------------------------------------------------------------------------------------------------------------------------------------------------------------------------------------------------------------------------------------------------------------------------------------------------------------------------------------------------------------------------------------------------------------------------------------------------------------------------------------------------------------------------------------------------------------------------------------------------------------------------------------------------------------------------------------------------------------------------------------------------------------------------------------------------------------------------------------------------------------------------------------------------------------------------------------------------------------------------------------------------------------------------------------------------------------------------------------------------------------------------------------------------------------------------------------------------------------------------------------------------------------------------------------------------------------------------------------------------------------------------------------------------------------------------------------------------------------------------------------------------------------------------------------------------------------------------------------------------------------------------------------------------------------------------------------------------------------------------------------------------------------------------------------------------------------------------------------------------------------------------------------------------------------------------------------------------------------------------------------------------------------------------------------------------------------------------------------------------------------------------------------------------------------------------------------------------------------------------------------------------------------------------------------------------------------------------------------------------------------------------------------------------------------------------------------------------------------------------------------------------------------------------------------------------------------------------------------------------------------------------------------------------------------------------------------------------------------------------------------------------------------------------------------------------------------------------------------------------------------------------------------------------------------------------------------------------------------------------------------------------------------------------------------------------------------------------------------------------------------------------------------------------------------------------------------------------------------------------------------------------------------------------------------------------------------------------------------------------------------------------------------------------------------------------------------------------------------------------------------------------------------------------------------------------------------------------------------------------------------------------------------------------------------------------------------------------------------------------------------------------------------------------------------------------------------------------------------------------------------------------------------------------------------------------------------------------------------------------------------------------------------------------------------------------------------------------------------------------------------------------------------------------------------------------------------------------------------------------------------------------------------------------------------------------------------------------------------------------------------------------------------------------------------------------------------------------------------------------------------------------------------------------------------------------------------------------------------------------------------------------------------------------------------------------------------------------------------------------------------------------------------------------------------------------------------------------------------------------------------------------------------------------------------------------------------------------------------------------------------------------------------------------------------------------------------------------------------------------------------------------------------------------------------------------------------------------------------------------------------------------------------

12/31/2020 3:45:35 PM \\civl-server\projects\1940026 River West Choice Neighborhood\Drawings\DWG\1940026-RW-Main 2.dgn

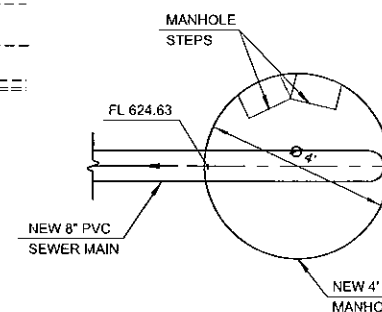


**CAUTION**  
NOTICE TO CONTRACTOR  
THE CONTRACTOR IS SPECIFICALLY CAUTIONED THE LOCATION AND ELEVATION OF EXISTING UTILITIES AS SHOWN ON THESE PLANS ARE BASED ON RECORDS OF THE VARIOUS UTILITY COMPANIES AND MEASUREMENTS TAKEN IN THE FIELD. THE INFORMATION IS NOT TO BE RELIED ON AS BEING EXACT OR COMPLETE. THE CONTRACTOR MUST CALL THE LOCAL UTILITY LOCATION CENTER AT LEAST 72 HOURS BEFORE ANY EXCAVATION TO REQUEST EXACT FIELD LOCATIONS OF THE UTILITIES

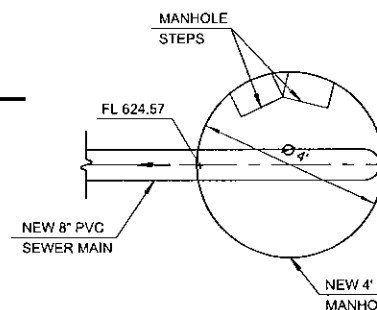
**BENCHMARK 1**  
CHISELED SQUARE  
N: 417667.574  
E: 2559185.253  
ELEV: 631.551  
(LOCATED ON THE NORTH CURB OF THE SECOND DRIVEWAY ON THE EAST SIDE OF S JACKSON AVE NORTH OF W 23RD ST)

**BENCHMARK 10**  
SSMH LID  
N: 417464.378  
E: 2559210.585  
ELEV: 635.450  
(LOCATED ON THE EAST SIDE OF S JACKSON AVE NORTH OF W 23RD ST)

MINIMUM TRENCH WIDTH FOR PVC SANITARY SEWER INSTALLED BELOW GROUNDWATER LEVEL WITH WATER TABLE CRADLE PER COT STD. 367	
PIPE I.D.	MIN TRENCH WIDTH & EXCAVATION PAY WIDTH
8"-12"	3'-0"
14"-18"	4'-6"



**11 INVERT DETAIL - MANHOLE 10**  
SCALE: 1" = 2'



**12 INVERT DETAIL - MANHOLE 11**  
SCALE: 1" = 2'



01/04/2021 OKLAHOMA CA #1260 EXPIRATION 03/31/21

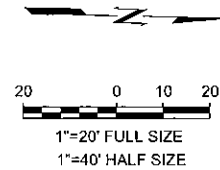
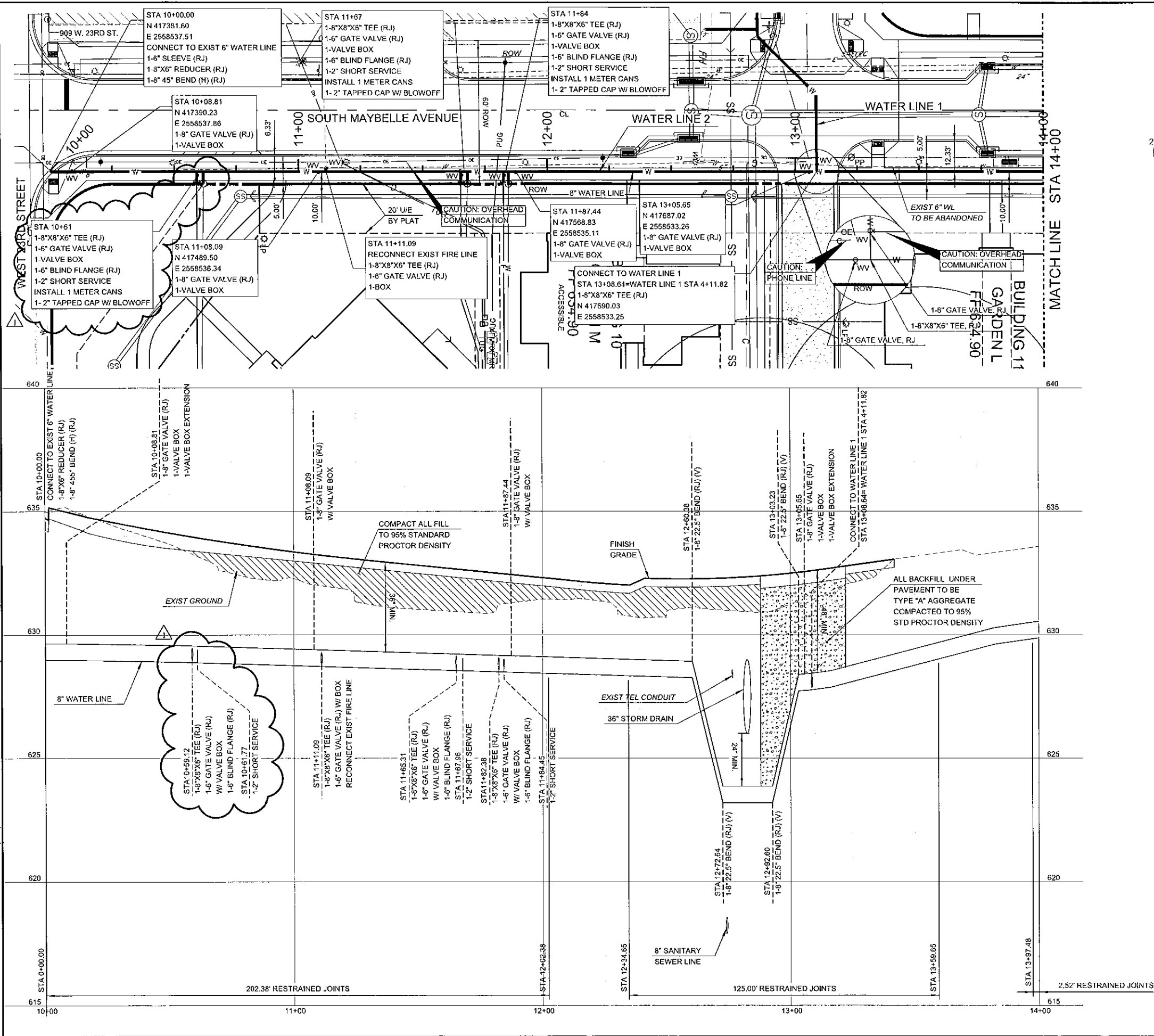
REVISION			PLAN SCALE: 1"=20'-0"		DRAWN		MDE		APPROVED:	
1	ADDENDUM 2	JR	1/4/21		DESIGNED	JR	11/20/20		CITY ENGINEER	
					SURVEY	ARJ	11/20/20			
					PROJ MGR.					
					LEAD MGR.					
					FIELD MGR.					
					RECOMMENDED:				CITY ENGINEER	
					DESIGN MANAGER					
					FILE:	DRAWING:			DATE: 11/20/2020	
					ATLAS PAGE NO.: 35				SHEET 48 OF 68 SHEETS	

SAN SWR 2 STA 24+00 TO STA 24+72.22  
SAN SWR 4 STA 30+00 TO STA 31+99.83

RIVER WEST CNI PUBLIC IMPROVEMENT  
CONTRACT 4

CITY OF TULSA, OKLAHOMA  
ENGINEERING SERVICES DEPARTMENT

PLANS AND ESTIMATES PREPARED BY:  
**wallace**  
WALLACE ENGINEERING & STRUCTURAL CONSULTANTS, INC.  
123 N. MARTIN LUTHER KING JR. BLVD.  
TULSA, OK 74103  
(918) 554-5858



BENCHMARK 6  
CHISELED SQUARE  
N: 417443.778  
E: 2558530.139  
ELEV: 632.932  
(LOCATED ON THE CURB ON THE EAST SIDE OF S MAYBELLE AVE SOUTH OF THE FIRST DRIVEWAY NORTH OF W 23RD ST)

BENCHMARK 7  
CHISELED SQUARE  
N: 417646.066  
E: 2558526.818  
ELEV: 630.406  
(LOCATED ON THE CURB ON THE EAST SIDE OF S MAYBELLE AVE AT W 22ND PL)

NOTE:  
ALL VALVES AND FIRE HYDRANTS SHALL BE INSTALLED ON LEVEL SECTION OF PIPE. MAXIMUM PIPE DEFLECTION HORIZONTAL OR VERTICAL SHALL BE 1"30' PER JOINT. THE DEFLECTION NOTED SHALL BE EVENLY SPACED OVER THE STATIONS SHOWN.

**SUMMARY TABLE**

(4) 8" GATE VALVE, RJ & VALVE BOX
(4) 6" GATE VALVE, RJ & VALVE BOX
(2) VALVE BOX EXTENSION
(5) 8"x8"x6" TEE, RJ
(4) 8" 22.5" BEND, RJ
(1) 8" 45" BEND, RJ
(1) 8"x6" REDUCER, RJ
(1) 6" SLEEVE, RJ
(3) 6" BLIND FLANGE, RJ
(3) 2" SHORT SERVICE
(3) METER CAN FOR 2" METER
(3) 2" TAPPED CAP W/ BLOWOFF

NOTE:  
FURNISHED BY CONTRACTOR - INSTALLED BY CONTRACTOR  
ALL VALVES SHALL BE INSTALLED ON LEVEL SECTION OF PIPE



**CAUTION**  
NOTICE TO CONTRACTOR  
THE CONTRACTOR IS SPECIFICALLY CAUTIONED THE LOCATION AND ELEVATION OF EXISTING UTILITIES AS SHOWN ON THESE PLANS ARE BASED ON RECORDS OF THE VARIOUS UTILITY COMPANIES AND MEASUREMENTS TAKEN IN THE FIELD. THE INFORMATION IS NOT TO BE RELIED ON AS BEING EXACT OR COMPLETE. THE CONTRACTOR MUST CALL THE LOCAL UTILITY LOCATION CENTER AT LEAST 72 HOURS BEFORE ANY EXCAVATION TO REQUEST EXACT FIELD LOCATIONS OF THE UTILITIES

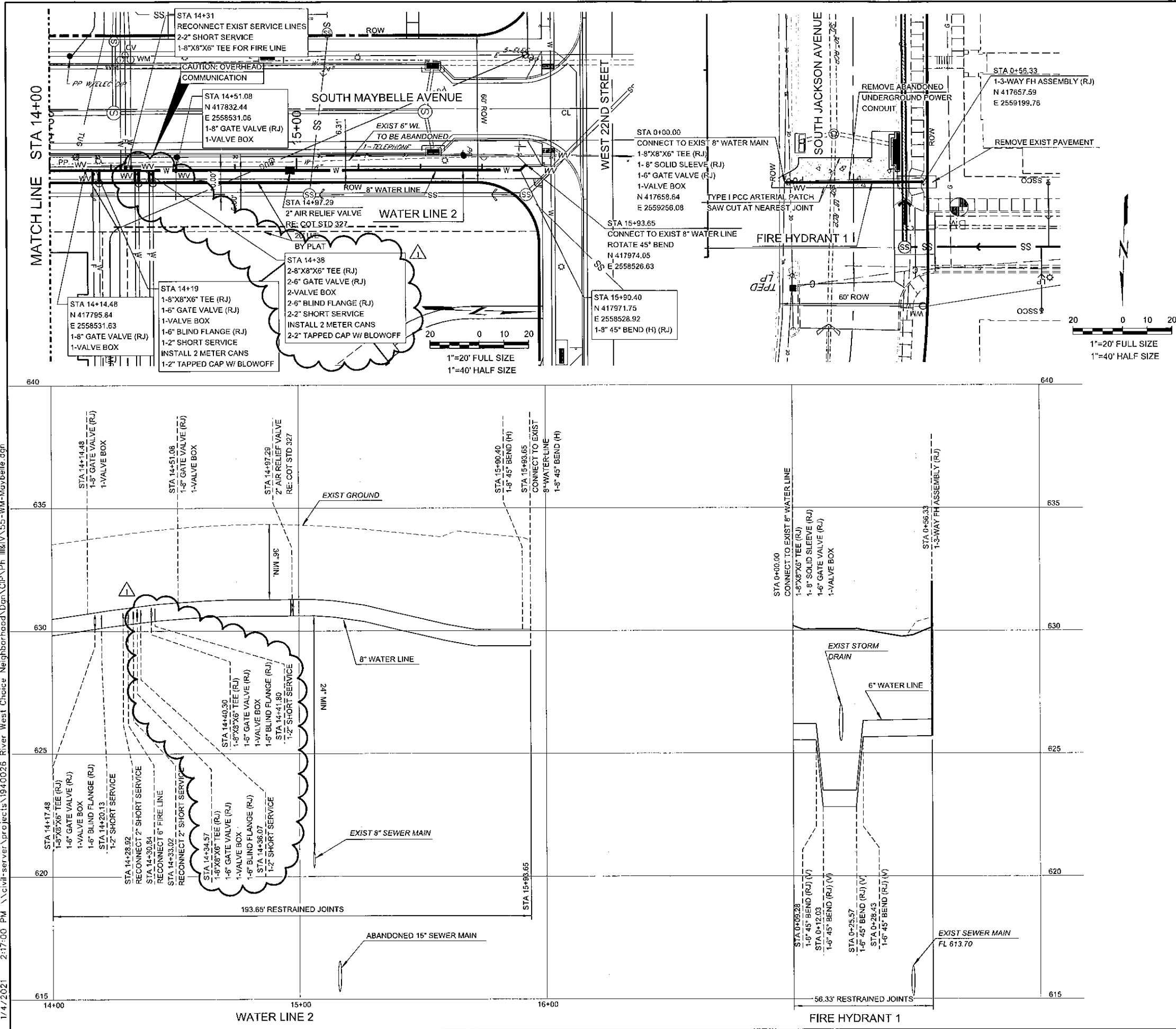


**WATER LINE 2 PLAN AND PROFILE**  
STA 10+00 TO 14+00  
**RIVER WEST CNI PUBLIC IMPROVEMENT**  
**CONTRACT 4**  
**CITY OF TULSA, OKLAHOMA**  
**ENGINEERING SERVICES DEPARTMENT**

PLANS AND ESTIMATES PREPARED BY:  
**wallace**  
WALLACE ENGINEERING  
STRUCTURAL CONSULTANTS INC.  
123 N. MARTIN LUTHER KING JR. B.V.D.  
TULSA, OK 74103  
(918) 544-6558

REVISION	BY	DATE	PLAN SCALE:	DRAWN	VDE	11/20/20	APPROVED:
ADDENDUM 2	JR	1/4/21	1"=20'-0"	DESIGNED	JR	11/20/20	
				SURVEY	ARJ	11/20/20	
			PROFILE SCALE:	PROJ MGR.			
			HORIZONTAL:	LEAD MGR.			
			1"=20'-0"	FIELD MGR.			
			VERTICAL:	RECOMMENDED:			
			1"=2'-0"	DESIGN MANAGER			
			FILE:	DRAWINGS:			
			ATLAS PAGE NO.: 35				

DATE: 11/20/2020  
SHEET 54 OF 69 SHEETS



BENCHMARK 1  
CHISELED SQUARE  
N: 417667.574  
E: 2559185.253  
ELEV: 631.551  
(LOCATED ON THE NORTH CURB OF THE SECOND DRIVEWAY ON THE EAST SIDE OF S JACKSON AVE NORTH OF W 23RD ST)

BENCHMARK 6  
CHISELED SQUARE  
N: 417443.778  
E: 2558530.139  
ELEV: 632.932  
(LOCATED ON THE CURB ON THE EAST SIDE OF S MAYBELLE AVE SOUTH OF THE FIRST DRIVEWAY NORTH OF W 23RD ST)

BENCHMARK 7  
CHISELED SQUARE  
N: 417848.066  
E: 2558526.818  
ELEV: 630.406  
(LOCATED ON THE CURB ON THE EAST SIDE OF S MAYBELLE AVE AT W 22ND ST)

NOTE:  
ALL VALVES AND FIRE HYDRANTS SHALL BE INSTALLED ON LEVEL SECTION OF PIPE. MAXIMUM PIPE DEFLECTION HORIZONTAL OR VERTICAL SHALL BE 1"30' PER JOINT. THE DEFLECTION NOTED SHALL BE EVENLY SPACED OVER THE STATIONS SHOWN.

SUMMARY TABLE

(1) 2" AIR RELIEF VALVE, RJ & CAN
(2) 8" GATE VALVES, RJ, & VALVE BOX
(4) 6" GATE VALVES, RJ, & VALVE BOX
(4) 8"x8"x6" TEES, RJ
(1) 8" SOLID SLEEVE, RJ
(3) 8" BLIND FLANGE, RJ
(3) 2" SHORT SERVICE
(3) METER CAN FOR 2" METER
(3) 2" TAPPED CAP W/ BLOWOFF
(4) 6" 45° BENDS, RJ
(1) 8" 45° BEND, RJ
(1) 3-WAY FIRE HYDRANT ASSEMBLY, RJ

NOTE:  
FURNISHED BY CONTRACTOR - INSTALLED BY CONTRACTOR  
ALL VALVES SHALL BE INSTALLED ON LEVEL SECTION OF PIPE



CAUTION  
NOTICE TO CONTRACTOR  
THE CONTRACTOR IS SPECIFICALLY CAUTIONED THE LOCATION AND ELEVATION OF EXISTING UTILITIES AS SHOWN ON THESE PLANS ARE BASED ON RECORDS OF THE VARIOUS UTILITY COMPANIES AND MEASUREMENTS TAKEN IN THE FIELD. THE INFORMATION IS NOT TO BE RELIED ON AS BEING EXACT OR COMPLETE. THE CONTRACTOR MUST CALL THE LOCAL UTILITY LOCATION CENTER AT LEAST 72 HOURS BEFORE ANY EXCAVATION TO REQUEST EXACT FIELD LOCATIONS OF THE UTILITIES.



WATER LINE 2 STA 14+00 TO 15+93.65  
FIRE HYDRANT 1 STA 0+00 TO 0+56.33

RIVER WEST CNI PUBLIC IMPROVEMENT  
CONTRACT 4

CITY OF TULSA, OKLAHOMA  
ENGINEERING SERVICES DEPARTMENT

PLANS AND ESTIMATES PREPARED BY:  
wallace  
WALLACE ENGINEERING  
STRUCTURAL CONSULTANTS INC.  
123 N. MARTIN LUTHER KING JR. BLVD.  
TULSA, OK 74103  
(918) 584-5858

REVISION	BY	DATE	PLAN SCALE:	DRAWN	NOE	11/20/20	APPROVED:
ADDENDUM 2	JR	1/4/21	1"=20'-0"	DESIGNED	JR	11/20/20	
				SURVEY	ARJ	11/20/20	
			PROFILE SCALE:	PROJ MGR.			
			HORIZONTAL:	LEAD MGR.			
			VERTICAL:	FIELD MGR.			
			1"=2'-0"	RECOMMENDED:			
				DESIGN MANAGER			
			FILE:	DRAWING:			
			ATLAS PAGE NO.: 35				

CITY ENGINEER  
DATE: 11/20/2020  
SHEET 55 OF 66 SHEETS