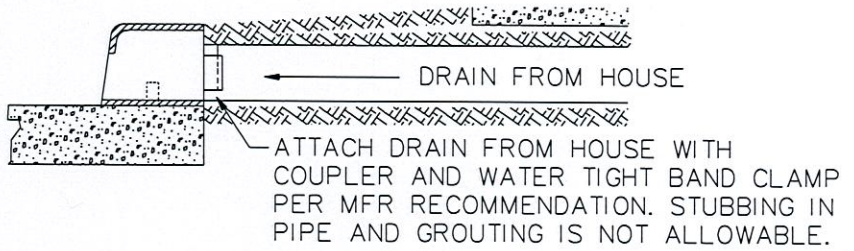


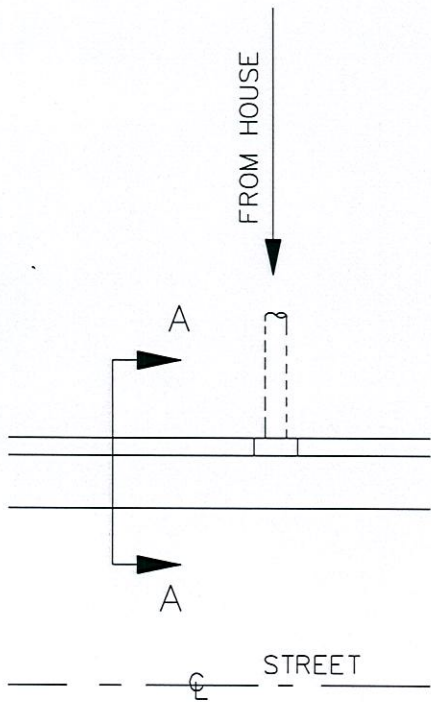
STORM WATER CURB OPENING



SECTION A-A

RESIDENTIAL CURB INLET

1. CONTRACTOR SHALL LOCATE AND RECONNECT ANY SIDE DRAINS FROM ADJACENT PROPERTY THROUGH THE CURB.
2. INSTALL R-3262-3 SERIES HEAVY DUTY STORM WATER CURB OPENING BY NEENAH OR APPROVED EQUAL.
3. FIELD VERIFY SIZE AND LOCATION PRIOR TO PAVING OPERATIONS.
4. CONTRACTOR SHALL CAST INLETS IN PLACE DURING CURB PRODUCTION. "CUT IN" NOT ACCEPTED.
5. TO BE USED ONLY FOR EXISTING PENETRATIONS. NEW CONNECTIONS ARE NOT ALLOWABLE.



PATH NAME: \\el\parts\std\DCN_std\758-res-storm-curb-opening.dgn RMO 2/13/2017

| | |
|--|--------------------|
| RESIDENTIAL STORM WATER CURB OPENING | |
| CITY OF TULSA, OKLAHOMA ENGINEERING SERVICES DEPARTMENT | |
| DRAWN BY: J.A.B. | APPROVED |
| CHECKED BY: <i>MJS</i> | <i>[Signature]</i> |
| DATE: FEBRUARY 2017 | |
| NOT TO SCALE | STANDARD NO. 758 |