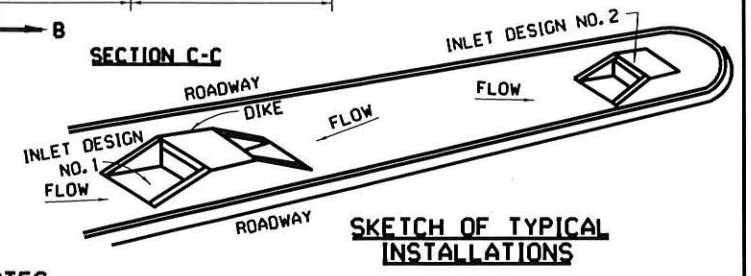
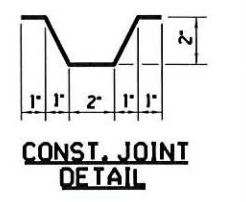
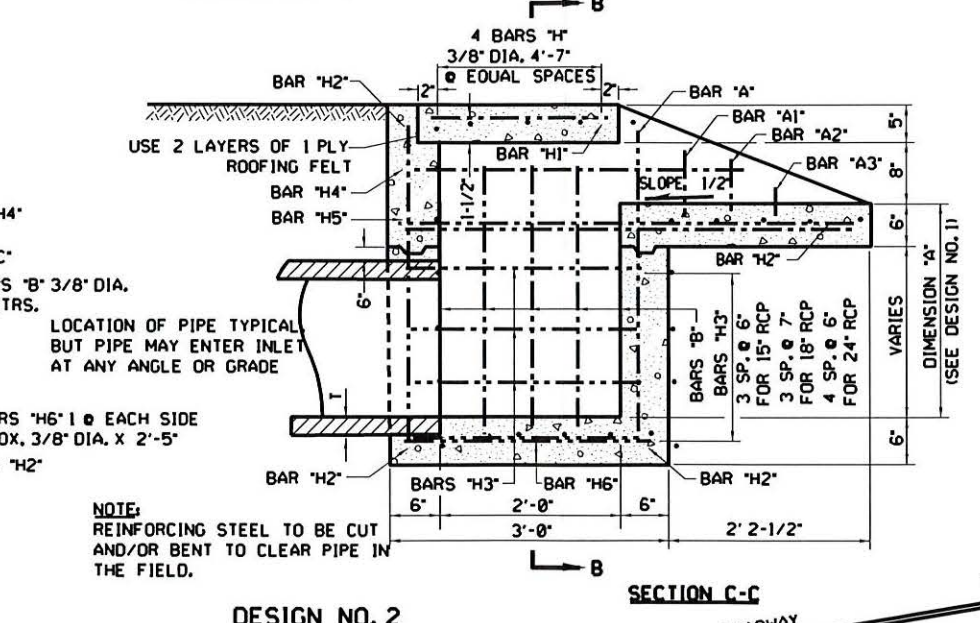
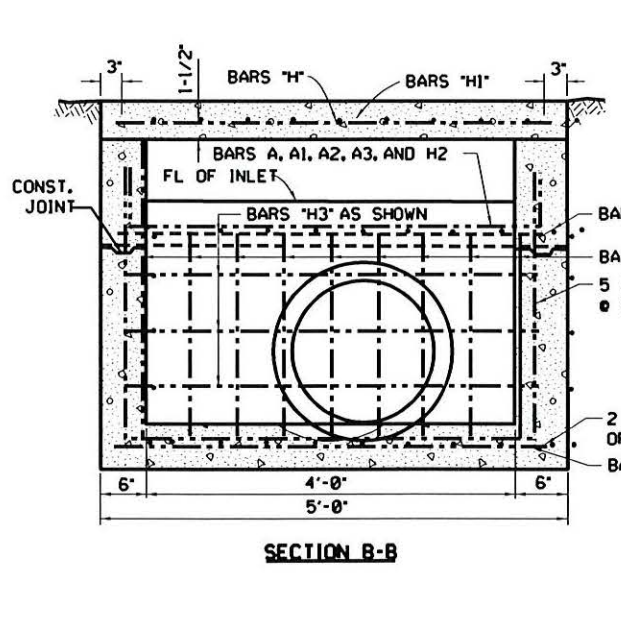
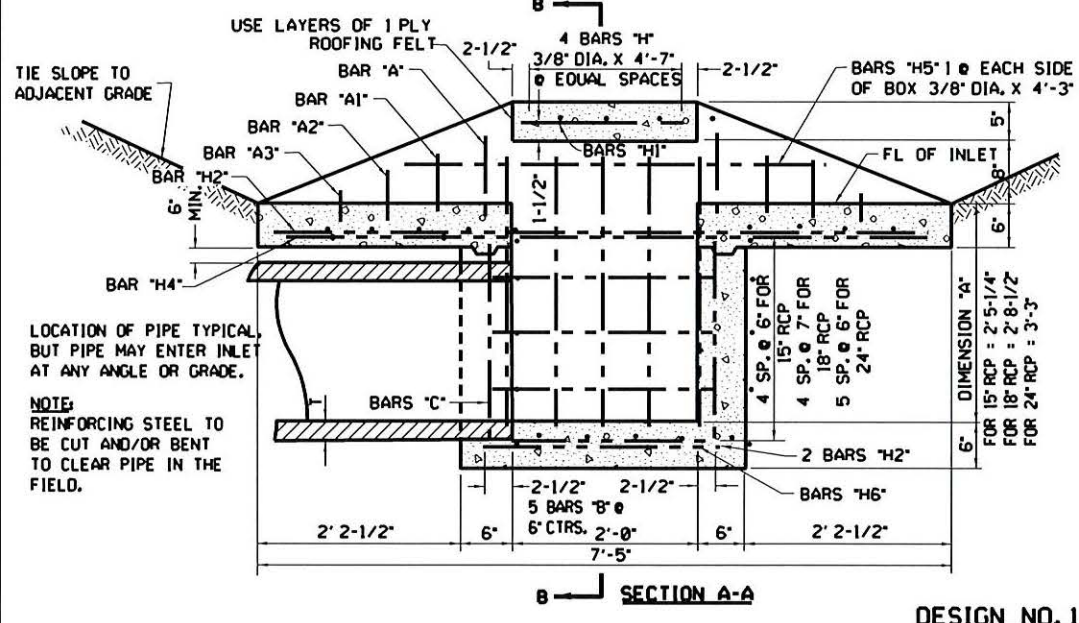
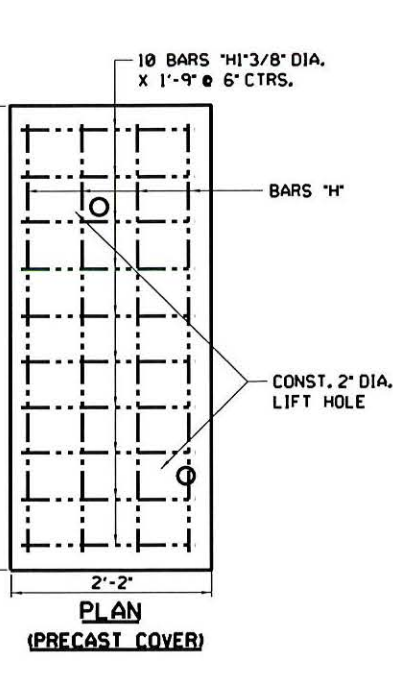
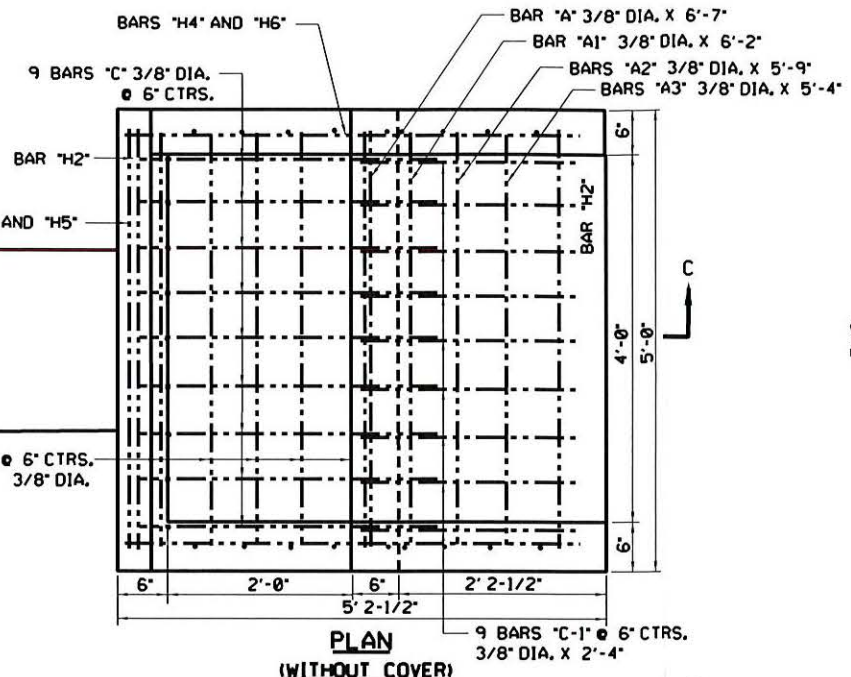
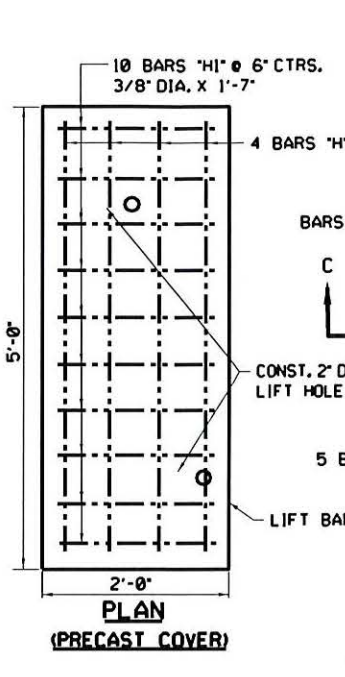
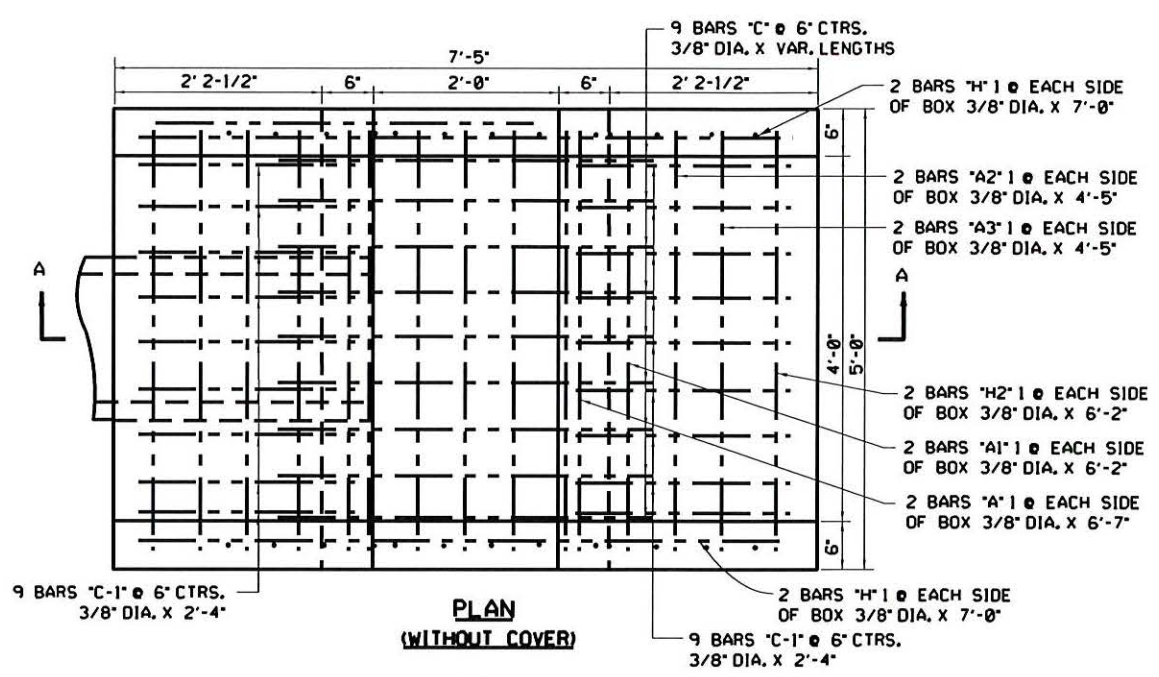


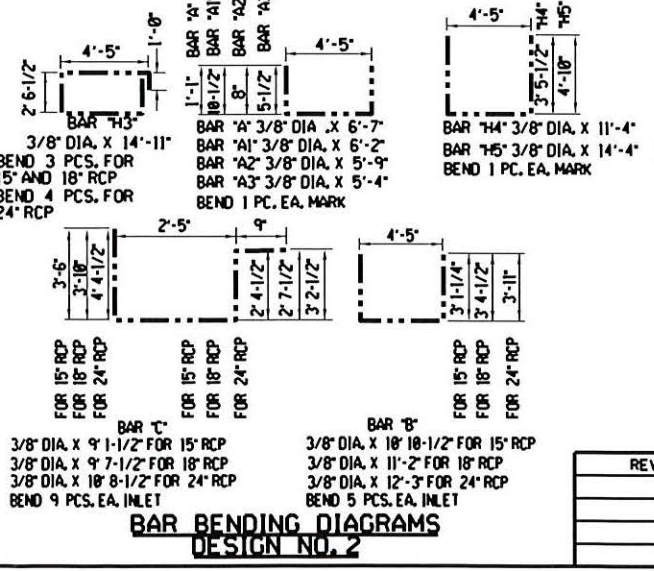
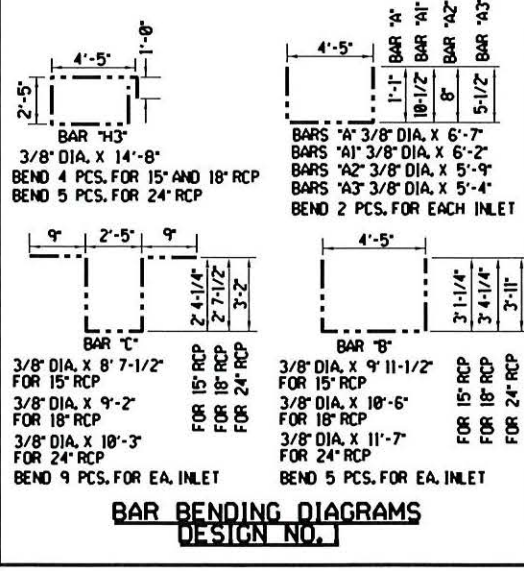
PATH NAME: E:\PARTS\STD\DDN\770-STD-DROP-INLET-15-24.DGN RMO 01/14/2020



DESIGN NO. 1						DESIGN NO. 2												
15" RCP			18" RCP			24" RCP			15" RCP			18" RCP			24" RCP			
MARK	NO. PCS.	SHAPE	NO. PCS.	SHAPE	LENGTH	NO. PCS.	SHAPE	LENGTH	MARK	NO. PCS.	SHAPE	LENGTH	NO. PCS.	SHAPE	LENGTH	NO. PCS.	SHAPE	LENGTH
A	2	BENT	2	BENT	6'-7"	2	BENT	6'-7"	A	1	BENT	6'-7"	1	BENT	6'-7"	1	BENT	6'-7"
A1	2	BENT	2	BENT	6'-2"	2	BENT	6'-2"	A1	1	BENT	6'-2"	1	BENT	6'-2"	1	BENT	6'-2"
A2	2	BENT	2	BENT	5'-9"	2	BENT	5'-9"	A2	1	BENT	5'-9"	1	BENT	5'-9"	1	BENT	5'-9"
A3	2	BENT	2	BENT	5'-4"	2	BENT	5'-4"	A3	1	BENT	5'-4"	1	BENT	5'-4"	1	BENT	5'-4"
B	5	BENT	5	BENT	12'-3"	5	BENT	12'-3"	B	5	BENT	18" 7-1/2"	5	BENT	11'-2"	5	BENT	12'-3"
C	9	BENT	9	BENT	8'-7-1/2"	9	BENT	9'-2"	C	9	BENT	9'-1-1/2"	9	BENT	9'-7-1/2"	9	BENT	18" 8-1/2"
C1	18	STR.	18	STR.	2'-4"	18	STR.	2'-4"	C1	9	STR.	2'-4"	9	STR.	2'-4"	9	STR.	2'-4"
H	4	STR.	4	STR.	4'-7"	4	STR.	4'-7"	H	4	STR.	4'-7"	4	STR.	4'-7"	4	STR.	4'-7"
H1	10	STR.	10	STR.	1'-7"	10	STR.	1'-7"	H1	10	STR.	1'-9"	10	STR.	1'-9"	10	STR.	1'-9"
H2	4	STR.	4	STR.	4'-5"	4	STR.	4'-5"	H2	4	STR.	4'-7"	4	STR.	4'-7"	4	STR.	4'-7"
H3	4	BENT	4	BENT	14'-8"	4	BENT	14'-8"	H3	3	BENT	14'-11"	3	BENT	14'-11"	4	BENT	14'-11"
H4	2	STR.	2	STR.	7'-8"	2	STR.	7'-8"	H4	1	BENT	11'-4"	1	BENT	11'-4"	1	BENT	11'-4"
H5	2	STR.	2	STR.	4'-3"	2	STR.	4'-3"	H5	1	BENT	14'-1"	1	BENT	14'-1"	1	BENT	14'-1"
H6	2	STR.	2	STR.	2'-5"	2	STR.	2'-5"	H6	2	STR.	2'-5"	2	STR.	2'-5"	2	STR.	2'-5"

QUANTITIES							
ITEM	15" RCP	18" RCP	24" RCP	ITEM	15" RCP	18" RCP	24" RCP
CLASS "A" CONCRETE	1.67 C.Y.	1.73 C.Y.	1.77 C.Y.	CLASS "A" CONCRETE	1.52 C.Y.	1.59 C.Y.	1.64 C.Y.
REINFORCING STEEL	135 LBS.	141 LBS.	147 LBS.	REINFORCING STEEL	118 LBS.	121 LBS.	132 LBS.

QUANTITIES PER FT. OF VERT. HT. - CLASS "A" CONC. - 0.26 C.Y. - REINFORCING STEEL - 21.79 LBS. (SEE NOTES)



GENERAL NOTES

1. ALL CONSTRUCTION SHALL BE IN ACCORDANCE WITH THE CITY OF TULSA STANDARD SPECIFICATIONS.
2. ALL EXPOSED CONCRETE SURFACES TO BE CORROUNDUM FINISHED.
3. ALL EXPOSED CONCRETE EDGES SHALL HAVE A 1/2" CHAMFER.
4. ALL REINFORCING STEEL TO BE 3/8" DIAMETER DEFORMED BARS.
5. FOR EACH FOOT ADDITIONAL HEIGHT, ADD 2'-0" TO BARS "B" AND "C," BARS "H3" AT 6" CTR. TO CTR.
6. REINFORCED CONC. PIPES SHALL CONFORM TO THE REQUIREMENTS OF ASTM C-76-596 (AASHTO M-170-60) CLASS III UNLESS OTHERWISE DESIGNATED.
7. CLASS A CONC. QUANTITIES ARE COMPUTED USING WALL THICKNESS TAKEN FROM WALL B COLUMN OF ASTM AND AASHTO TABLES.
8. TOP OF INLET DIKE TO BE INSTALLED FLUSH WITH ADJACENT GRADE.

HAJ
CITY ENGINEER

HAS
DESIGN MANAGER

CITY OF TULSA, OKLAHOMA
ENGINEERING SERVICES DEPARTMENT

STANDARD DROP INLET
15", 18", AND 24"

DATE: JANUARY 2020

STD. 770

REVISION	BY	DATE