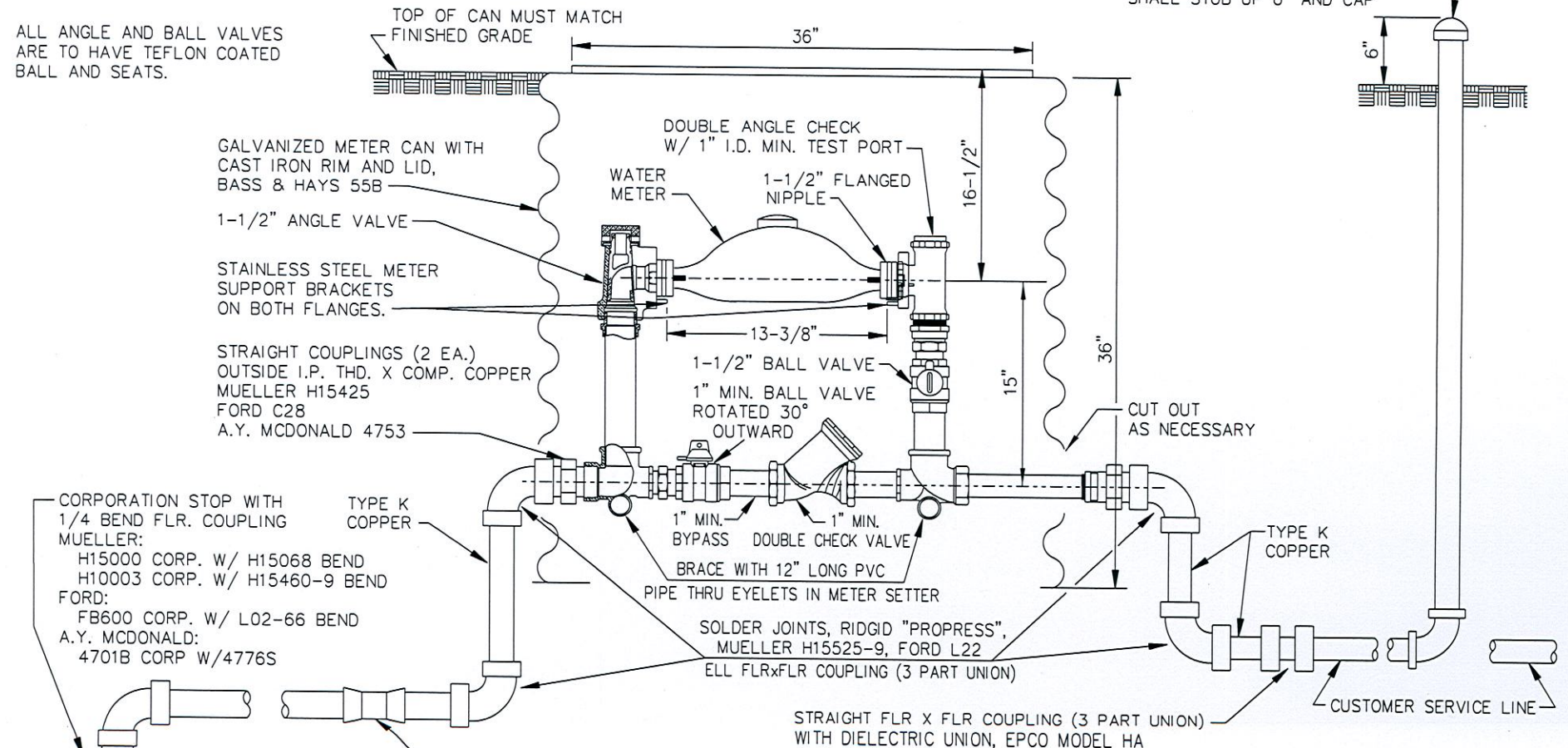


ALL ANGLE AND BALL VALVES ARE TO HAVE TEFLON COATED BALL AND SEATS.

IF NO CUSTOMER PIPE CONTRACTOR SHALL STUB UP 6" AND CAP



GALVANIZED METER CAN WITH CAST IRON RIM AND LID, BASS & HAYS 55B

1-1/2" ANGLE VALVE

STAINLESS STEEL METER SUPPORT BRACKETS ON BOTH FLANGES.

STRAIGHT COUPLINGS (2 EA.) OUTSIDE I.P. THD. X COMP. COPPER MUELLER H15425 FORD C28 A.Y. MCDONALD 4753

DOUBLE ANGLE CHECK W/ 1" I.D. MIN. TEST PORT

WATER METER

1-1/2" FLANGED NIPPLE

1-1/2" BALL VALVE

1" MIN. BALL VALVE ROTATED 30° OUTWARD

CUT OUT AS NECESSARY

CORPORATION STOP WITH 1/4 BEND FLR. COUPLING MUELLER:
H15000 CORP. W/ H15068 BEND
H10003 CORP. W/ H15460-9 BEND
FORD:
FB600 CORP. W/ L02-66 BEND
A.Y. MCDONALD:
4701B CORP W/4776S

TYPE K COPPER

1" MIN. BYPASS DOUBLE CHECK VALVE
BRACE WITH 12" LONG PVC
PIPE THRU EYELETS IN METER SETTER

TYPE K COPPER

SOLDER JOINTS, RIDGID "PROGRESS", MUELLER H15525-9, FORD L22
ELL FLR x FLR COUPLING (3 PART UNION)

STRAIGHT FLR X FLR COUPLING (3 PART UNION) WITH DIELECTRIC UNION, EPCO MODEL HA

STRAIGHT FLR X FLR COUPLING (3 PART UNION) MUELLER H15400, FORD C22

BOTH THE METER AND BYPASS MUST BE PROTECTED BY DUAL CHECK VALVES MOUNTED VERTICALLY OR HORIZONTALLY WITHIN THE LAYING LENGTH OF THE SETTER.

COMPRESSION FITTINGS NOT ALLOWED

COPPER TO COPPER - MUELLER H15425 (TWO)
FORD C28 (TWO)
A.Y. MCDONALD 4753

COPPER TO IRON - FORD C28 AND C85
A.Y. MCDONALD 4753 AND 4753-55

WITHOUT DIELECTRIC UNION
COPPER TO SCH 40 PVC -
FORD C84 AND C17
A.Y. MCDONALD 4753-22 AND 4754-44

SERVICE CLAMP FOR DIP - DOUBLE STRAP IRON FORD STYLE F202 MUELLER H10500 SERIES A.Y. MCDONALD 3825 ROMAC 101B

FOR PVC - BRONZE FORD STYLE S90 MUELLER 13400 SERIES POWERSEAL 3406 SERIES A.Y. MCDONALD 3895 ROMAC 202S

STANDARD METER SETTINGS FOR 1-1/2" WATER SERVICE	
CITY OF TULSA, OKLAHOMA ENGINEERING SERVICES DEPARTMENT	
DRAWN BY: R.M.O.	APPROVED
CHECKED BY: <i>HA</i>	<i>[Signature]</i>
DATE: FEBRUARY 2017	
NOT TO SCALE	STANDARD NO. 503

PATH: /e1/parts/std/DGN_std/mir-set-tandhof.dgn RMO 2/16/2017