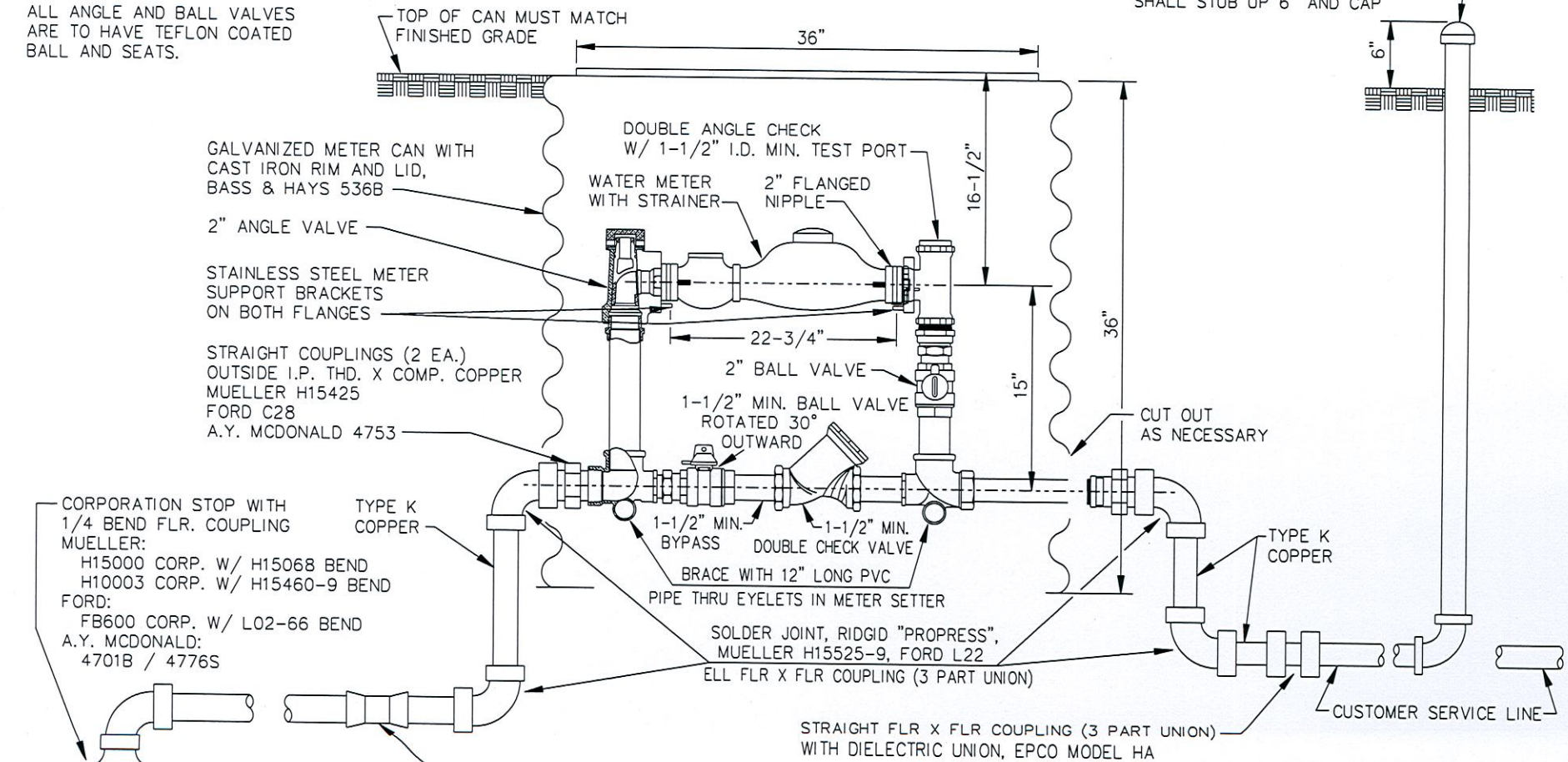


ALL ANGLE AND BALL VALVES ARE TO HAVE TEFLON COATED BALL AND SEATS.

IF NO CUSTOMER PIPE CONTRACTOR SHALL STUB UP 6" AND CAP



GALVANIZED METER CAN WITH CAST IRON RIM AND LID, BASS & HAYS 536B

2" ANGLE VALVE

STAINLESS STEEL METER SUPPORT BRACKETS ON BOTH FLANGES

STRAIGHT COUPLINGS (2 EA.) OUTSIDE I.P. THD. X COMP. COPPER MUELLER H15425 FORD C28 A.Y. MCDONALD 4753

DOUBLE ANGLE CHECK W/ 1-1/2" I.D. MIN. TEST PORT

WATER METER WITH STRAINER

2" FLANGED NIPPLE

1-1/2" MIN. BALL VALVE ROTATED 30° OUTWARD

1-1/2" MIN. BYPASS

DOUBLE CHECK VALVE

BRACE WITH 12" LONG PVC PIPE THRU EYELETS IN METER SETTER

SOLDER JOINT, RIDGID "PROGRESS", MUELLER H15525-9, FORD L22 ELL FLR X FLR COUPLING (3 PART UNION)

STRAIGHT FLR X FLR COUPLING (3 PART UNION) WITH DIELECTRIC UNION, EPCO MODEL HA

STRAIGHT FLR X FLR COUPLING (3 PART UNION) MUELLER H15400, FORD C22

BOTH THE METER AND BYPASS MUST BE PROTECTED BY DUAL CHECK VALVES MOUNTED VERTICALLY OR HORIZONTALLY WITHIN THE LAYING LENGTH OF THE SETTER. COMPRESSION FITTINGS NOT ALLOWED

COPPER TO COPPER - MUELLER H15425 (TWO) FORD C28 (TWO) A.Y. MCDONALD 4753

COPPER TO IRON - FORD C28 AND C85 A.Y. MCDONALD 4753 AND 4753-55

WITHOUT DIELECTRIC UNION COPPER TO SCH 40 PVC - FORD C84 AND C17 A.Y. MCDONALD 4753-22

SERVICE CLAMP FOR DIP - DOUBLE STRAP IRON FORD STYLE F202 MUELLER H10500 SERIES A.Y. MCDONALD 3825 FOR PVC - BRONZE FORD STYLE S90 MUELLER 13400 SERIES POWERSEAL 3406 SERIES A.Y. MCDONALD 3895 FOR HDPE - POLY-CAM 415

STANDARD METER SETTINGS FOR 2" WATER SERVICE

CITY OF TULSA, OKLAHOMA ENGINEERING SERVICES DEPARTMENT

DRAWN BY: R.M.O. CHECKED BY: HHS DATE: FEBRUARY 2017

APPROVED [Signature] STANDARD NO. 504