

REGULATORY FLOODPLAIN MAP ATLAS

This City of Tulsa Regulatory Floodplain Map Atlas has been prepared by the Engineering Services Department as a service for public information and education about flood hazard areas regulated by the City of Tulsa.

This Regulatory Floodplain Map Atlas utilizes the City of Tulsa Atlas as the base map. For current base map information contact House Numbering at 596-9616. The Atlas maps are maintained and updated by the City of Tulsa. The City of Tulsa Regulatory Floodplain Map Atlas identifies two floodplain lines (see inset, upper right):

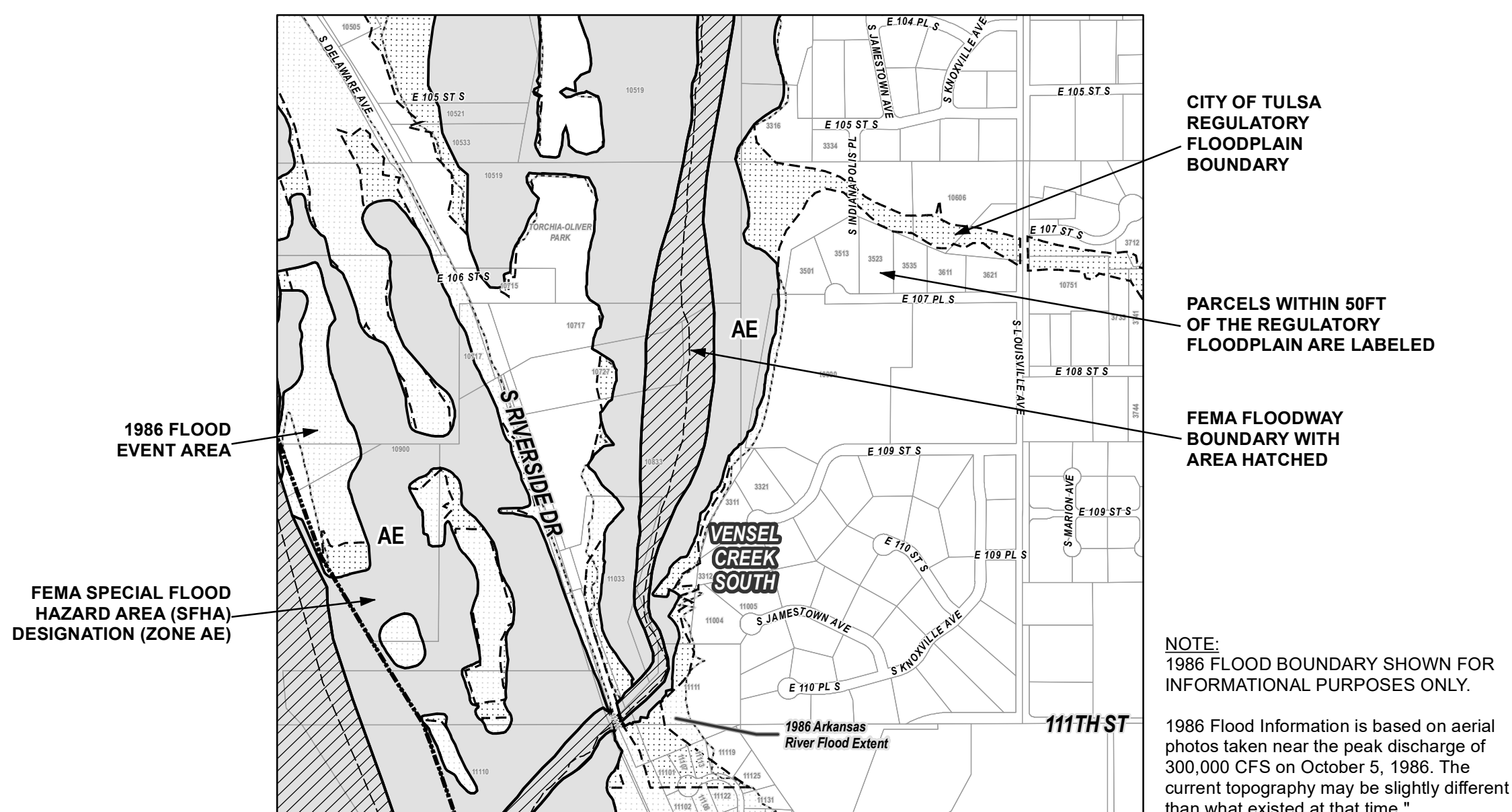
- 1. Solid Line: Federal Emergency Management Agency's Flood Insurance Rate Map A-Zone (One percent per year storm event).** The Federal maps limit the scope of study to approximately 640 acres of drainage area and existing watershed development conditions;
- 2. Dashed Line: City of Tulsa Floodplain (One percent per year storm event).** The City of Tulsa Floodplain maps extend the limit of study to approximately 40 acres of drainage area and fully-urbanized watershed development conditions.

The Federal Emergency Management Agency (FEMA) floodplains are based on the Flood Insurance Rate Maps, panel coverage shown on inset (lower right). The City of Tulsa Floodplain is based upon the floodplains delineated in each basin drainage study. Detailed information, such as flood height elevations, may be found in the basin drainage studies. The floodplain maps found in the basin drainage studies are produced on a 1-inch = 200 feet aerial photography with 2-foot contour intervals.

Title 11-A, Chapter 3, of the City of Tulsa ordinances mandates that the revised FEMA Flood Insurance Rate Maps shall be adopted after public notice by the City. The City of Tulsa's Floodplain maps shall be revised, as required, by the Engineering Services Department and adopted by the City Council on a regular basis.

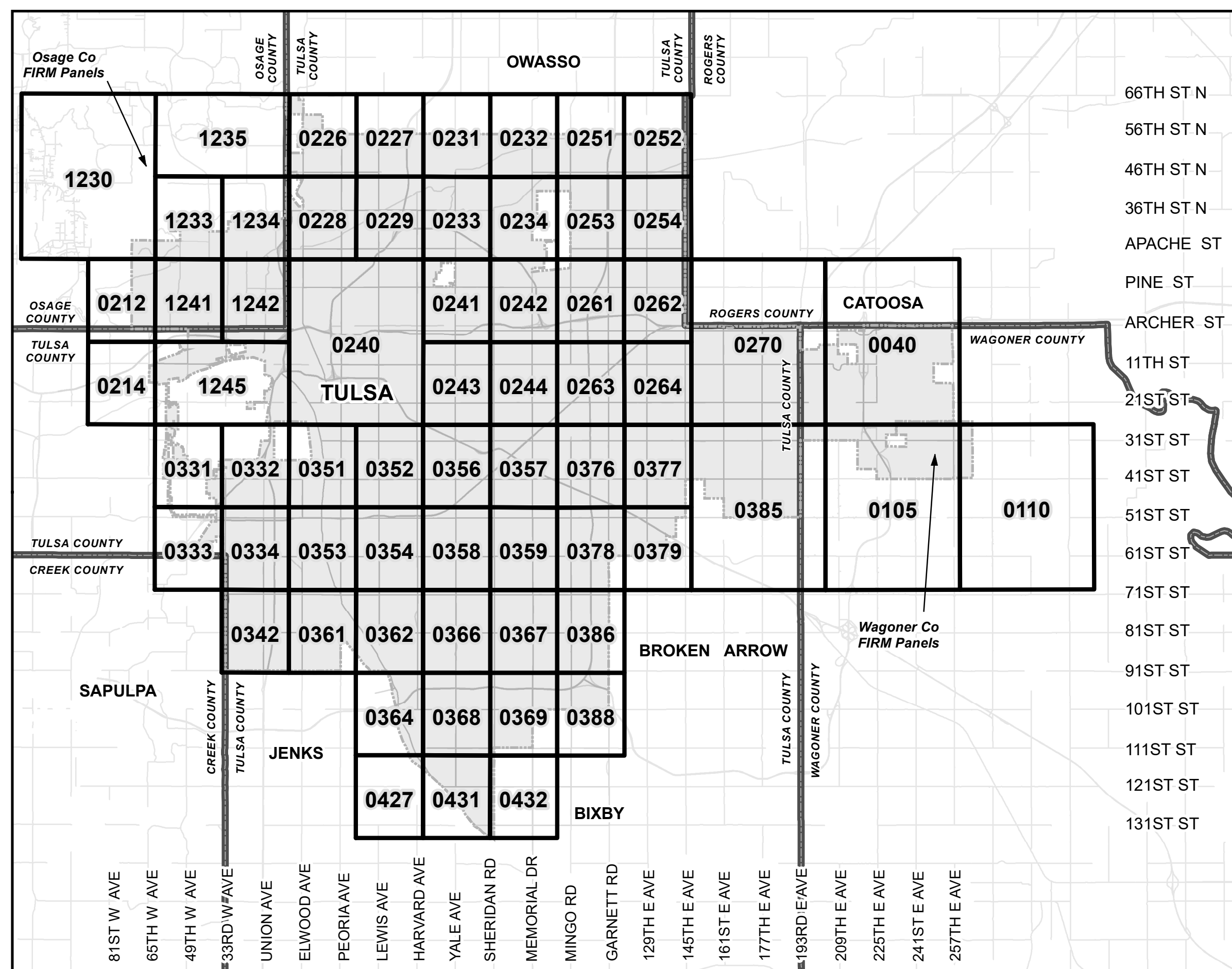
To get a flood zone determination or to have any question answered regarding floodplains contact:

ENGINEERING SERVICES DEPARTMENT
Stormwater Design
 2317 S. Jackson Avenue
 Tulsa, Oklahoma 7 4107-3017
 918-596-2100



KEY TO REGULATORY MAP SYMBOLS

NOT TO SCALE



FEMA MAP INDEX

NOT TO SCALE

CITY OF TULSA
 COMMUNITY NUMBER 405381

TULSA COUNTY, UNINCORPORATED AREAS
 COMMUNITY NUMBER 400462

OSAGE COUNTY
 COMMUNITY NUMBER 400146

WAGONER COUNTY
 COMMUNITY NUMBER 400215