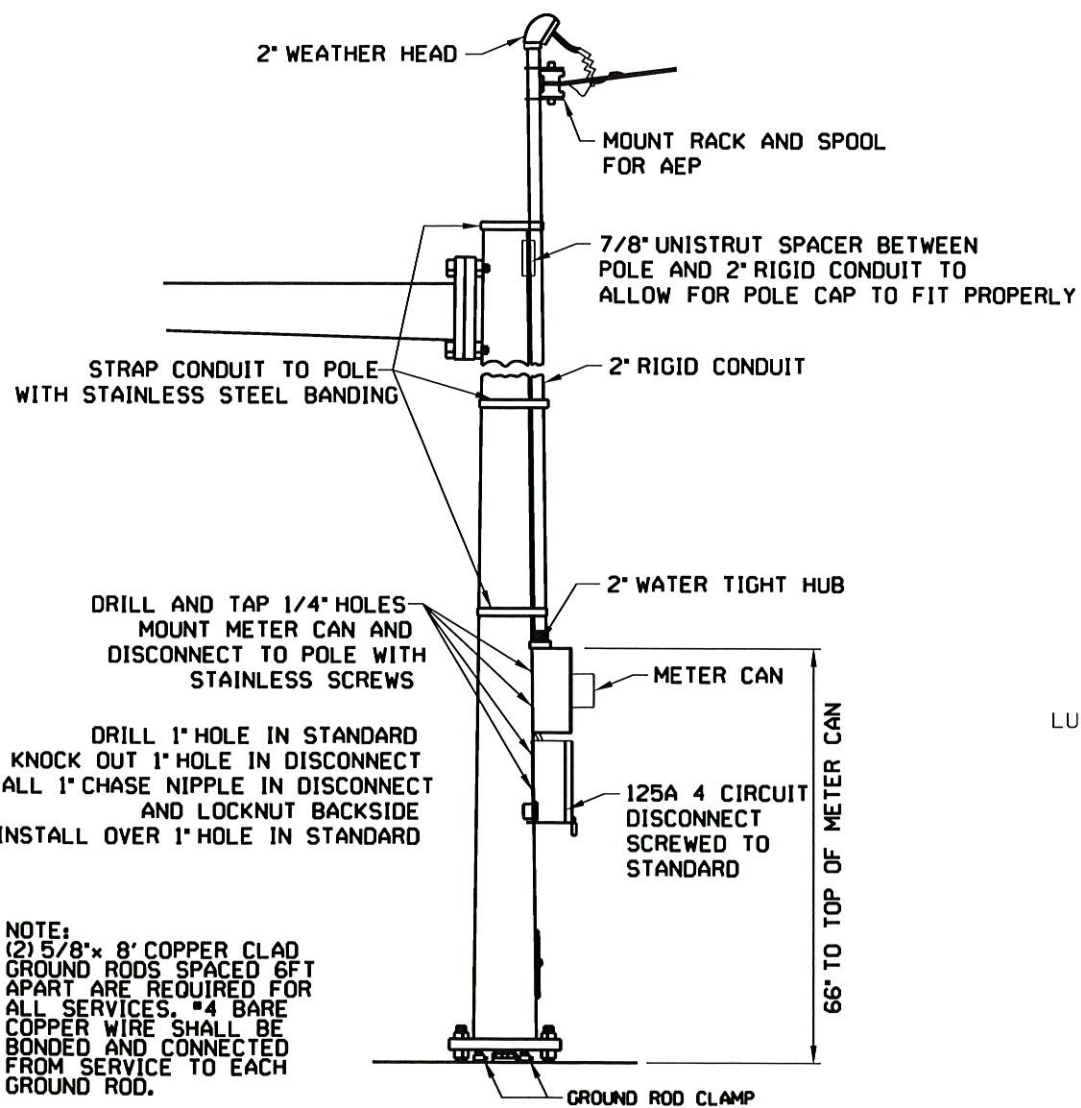
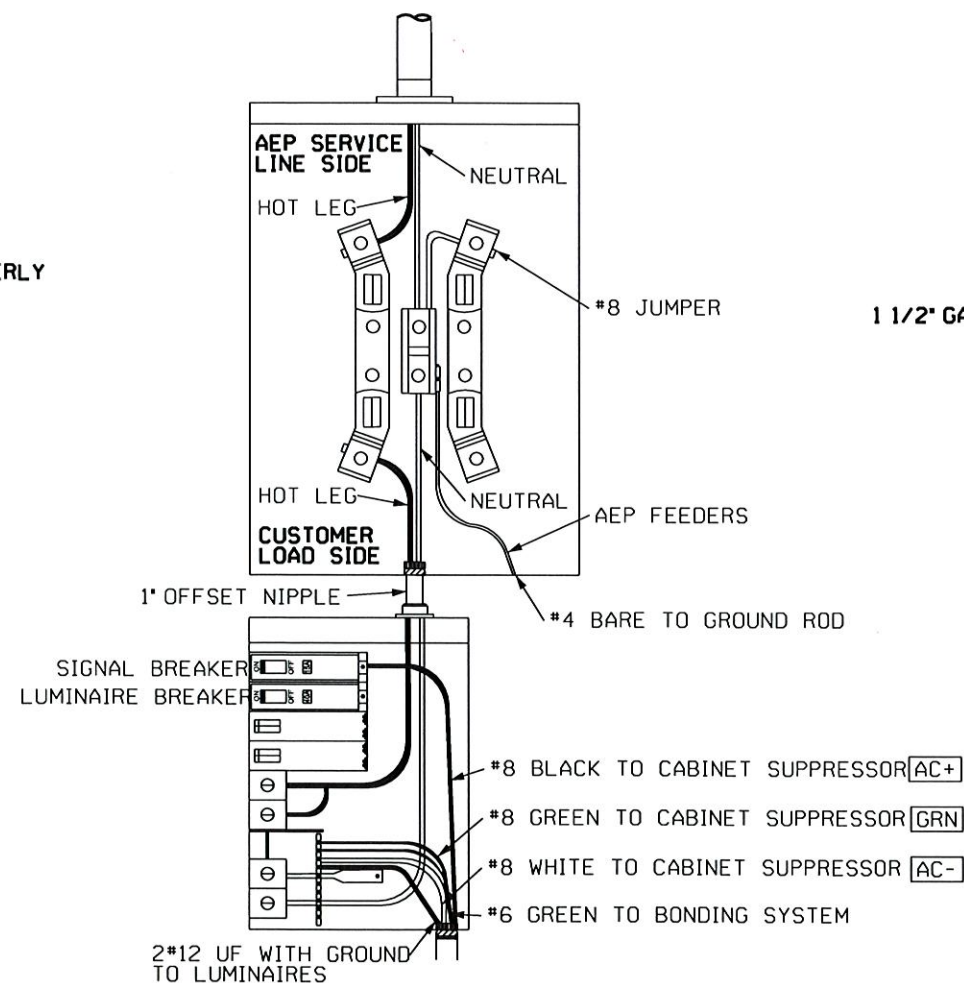


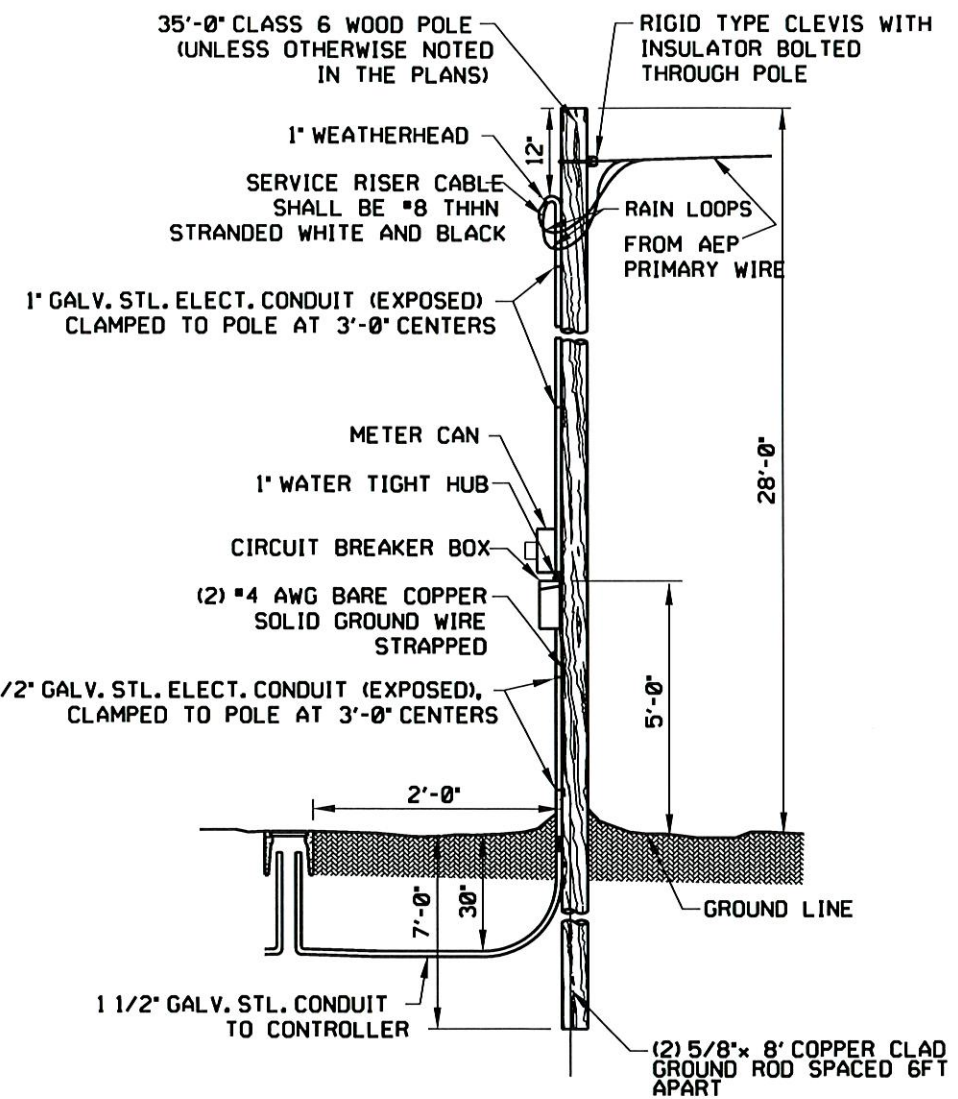
SERVICE TO SIGNAL STANDARD WITH LUMINAIRE



SERVICE TO SIGNAL STANDARD





METER AND DISCONNECT WIRING



OVERHEAD SERVICE TO SERVICE POLE

NOTE:
 (2) 5/8" x 8' COPPER CLAD
 GROUND RODS SPACED 6FT
 APART ARE REQUIRED FOR
 ALL SERVICES. #4 BARE
 COPPER WIRE SHALL BE
 BONDED AND CONNECTED
 FROM SERVICE TO EACH
 GROUND ROD.

REVISION BY DATE			 CITY ENGINEER	CITY OF TULSA, OKLAHOMA ENGINEERING SERVICES DEPARTMENT
DATE: AUGUST 2021				
DATE: AUGUST 2021			 CITY TRAFFIC ENGINEER	STD. 607A