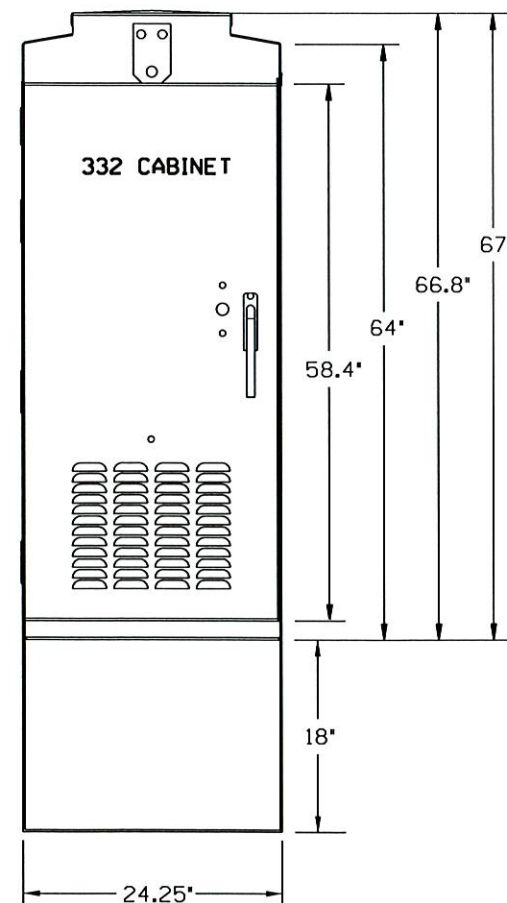
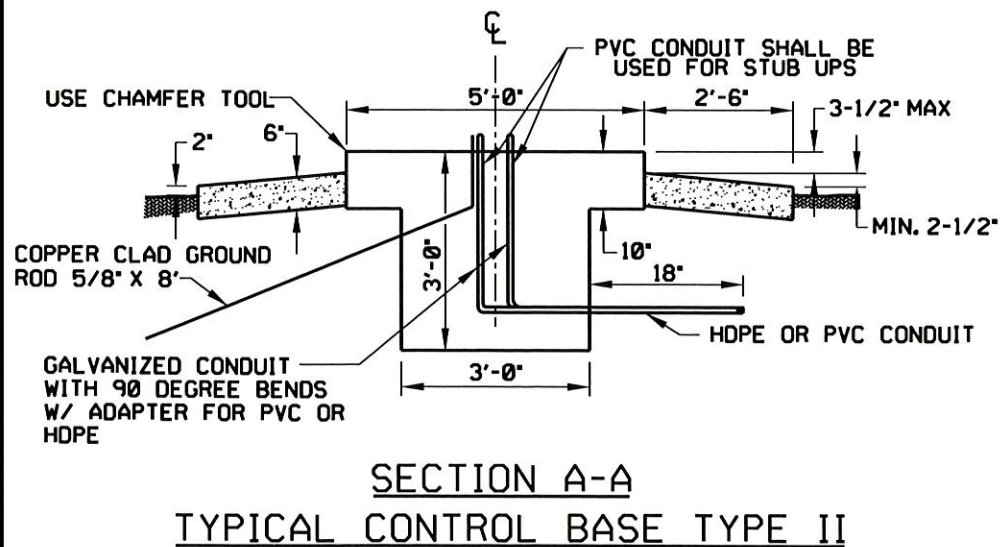
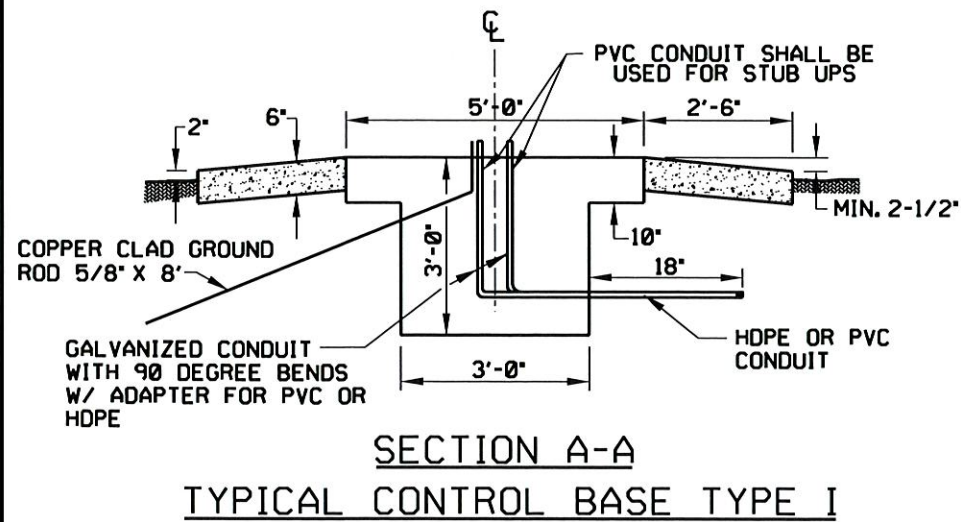
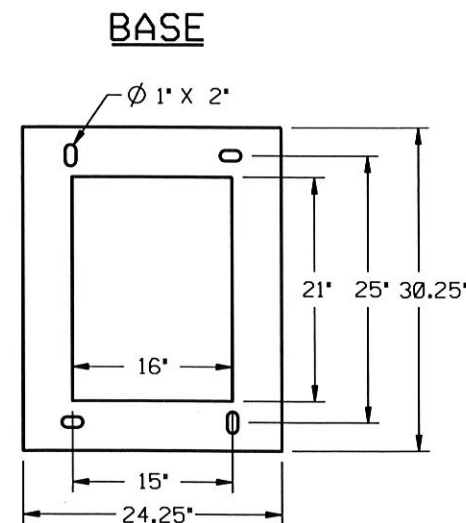


NOTE:

1. ALL MEASUREMENTS ARE FROM FINISH GRADE.
2. ALL CONDUIT TO BE SPECIFIED BY ENG. PLANS.
3. CONDUIT CLUSTER AT THE CENTER OF THE CONCRETE PAD SHALL BE THE HIGH POINT OF THE PAD TO PREVENT WATER FROM POOLING ON THE PAD.



CABINET BOLT DETAIL



REVISION	BY	DATE

CITY ENGINEER

[Signature]

CITY TRAFFIC ENGINEER

CITY OF TULSA, OKLAHOMA
ENGINEERING SERVICES DEPARTMENT

332 CONTROLLER CABINET DETAIL

DATE: AUGUST 2021

STD. 610A