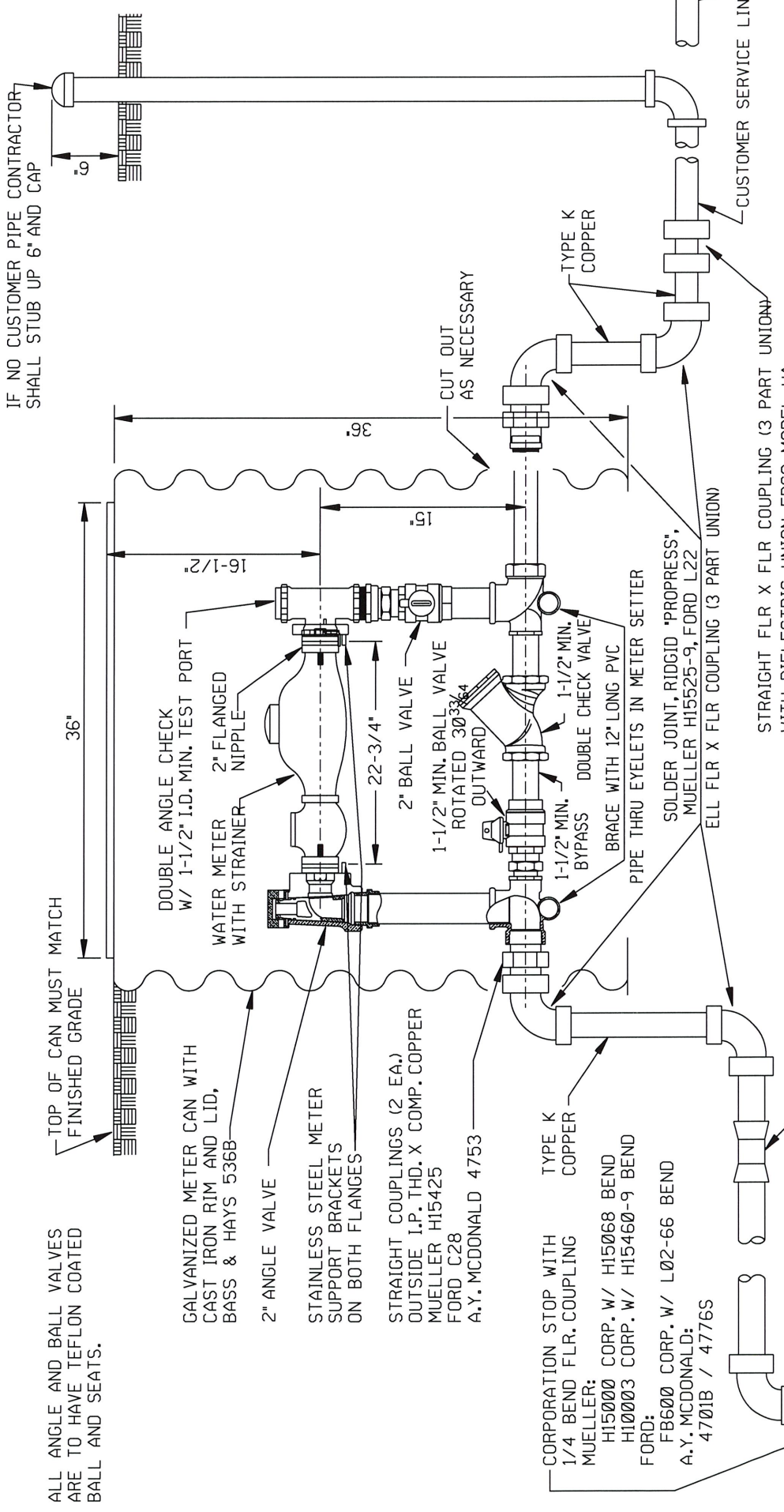


IF NO CUSTOMER PIPE CONTRACTOR SHALL STUB UP 6" AND CAP



ALL ANGLE AND BALL VALVES ARE TO HAVE TEFLON COATED BALL AND SEATS.

TOP OF CAN MUST MATCH FINISHED GRADE

36"

16-1/2"

DOUBLE ANGLE CHECK W/ 1-1/2" I.D. MIN. TEST PORT

WATER METER WITH STRAINER

2" FLANGED NIPPLE

22-3/4"

2" BALL VALVE

1-1/2" MIN. BALL VALVE ROTATED 30° OUTWARD

1-1/2" MIN. BYPASS DOUBLE CHECK VALVE

BRACE WITH 12" LONG PVC PIPE THRU EYELETS IN METER SETTER

SOLDER JOINT, RIDGID 'PROGRESS', MUELLER H15525-9, FORD L22

ELL FLR X FLR COUPLING (3 PART UNION)

STRAIGHT FLR X FLR COUPLING (3 PART UNION) WITH DIELECTRIC UNION, EPCO MODEL HA

CUSTOMER SERVICE LINE

TYPE K COPPER

CUT OUT AS NECESSARY

TOP OF CAN MUST MATCH FINISHED GRADE

GALVANIZED METER CAN WITH CAST IRON RIM AND LID, BASS & HAYS 536B

2" ANGLE VALVE

STAINLESS STEEL METER SUPPORT BRACKETS ON BOTH FLANGES

STRAIGHT COUPLINGS (2 EA.) OUTSIDE I.P. THD. X COMP. COPPER MUELLER H15425 FORD C28 A.Y. MCDONALD 4753

CORPORATION STOP WITH 1/4 BEND FLR. COUPLING MUELLER: H15000 CORP. W/ H15068 BEND H10003 CORP. W/ H15460-9 BEND FORD: FB600 CORP. W/ L02-66 BEND 4701B / 4776S

TYPE K COPPER

STRAIGHT FLR X FLR COUPLING (3 PART UNION) MUELLER H15400, FORD C22

SERVICE CLAMP FOR DIP - DOUBLE STRAP IRON FORD STYLE F202 MUELLER H10500 SERIES A.Y. MCDONALD 3825 FOR PVC - BRONZE FORD STYLE S90 MUELLER I3400 SERIES POWERSEAL 3406 SERIES A.Y. MCDONALD 3895 FOR HDPE - POLY-CAM 415

BOTH THE METER AND BYPASS MUST BE PROTECTED BY DUAL CHECK VALVES MOUNTED VERTICALLY OR HORIZONTALLY WITHIN THE LAYING LENGTH OF THE SETTER.

COMPRESSION FITTINGS NOT ALLOWED

COPPER TO COPPER - MUELLER H15425 (TWO) FORD C28 (TWO) A.Y. MCDONALD 4753

COPPER TO IRON - FORD C28 AND C85 A.Y. MCDONALD 4753 AND 4753-55

WITHOUT DIELECTRIC UNION COPPER TO SCH 40 PVC - FORD C84 AND C17 A.Y. MCDONALD 4753-22

| | |
|--|------------------|
| STANDARD METER SETTINGS FOR 2" WATER SERVICE | |
| CITY OF TULSA, OKLAHOMA ENGINEERING SERVICES DEPARTMENT | |
| DRAWN BY: R.M.O. | APPROVED: |
| CHECKED BY: <i>AAS</i> | |
| DATE: MARCH 2022 | |
| NOT TO SCALE | STANDARD NO. 504 |