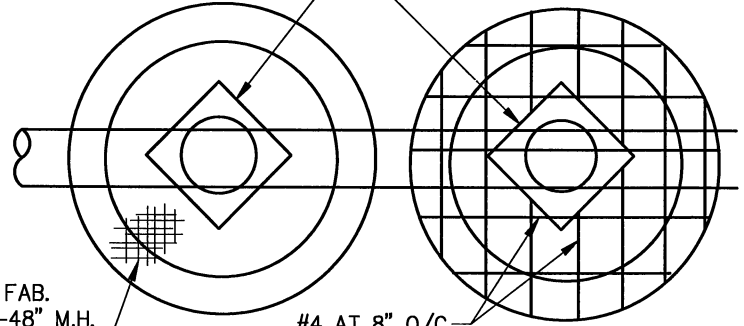
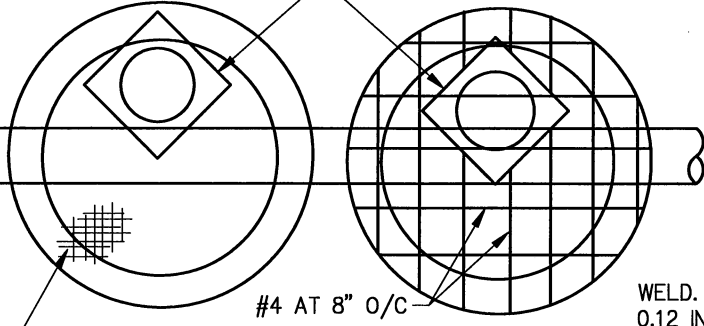


#4 BAR 30" LENGTH, 4 EA. DIAGONAL TO MAIN REINF.

#4 BAR 30" LENGTH, 4 EA. DIAGONAL TO MAIN REINF.



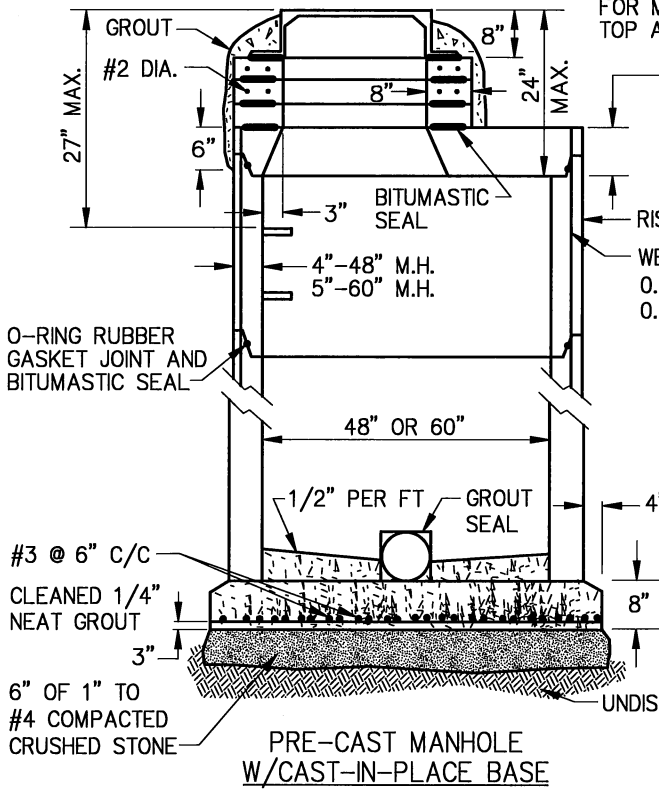
WELD. WIRE FAB.
0.12 IN²/FT-48" M.H.
0.15 IN²/FT-60" M.H.

TOP VIEW OF FLAT CONCRETE SLAB

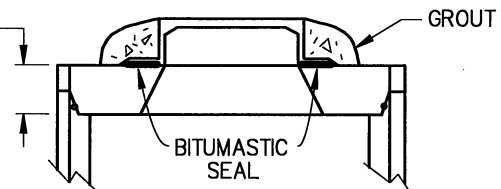
WELD. WIRE FAB.
0.12 IN²/FT-48" M.H.
0.15 IN²/FT-60" M.H.

FINISH GRADE AS DETERMINED BY ENGINEER

SEE STD. 414 FOR MANHOLE TOP ADJ.



6"-48" M.H.
8"-60" M.H.



LESS THAN 4' DEEP FROM INVERT TO FINISH GRADE

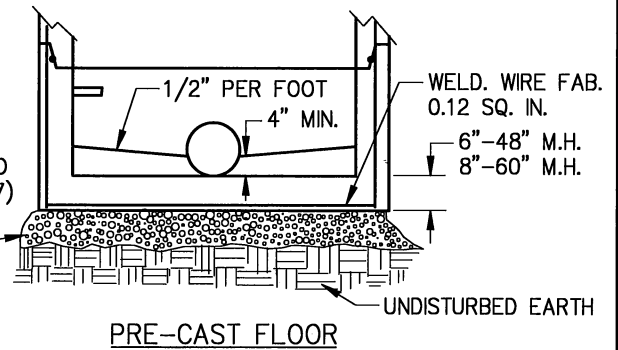
WELD. WIRE FAB.
0.12 IN²/FT- 48" M.H.
0.15 IN²/FT- 60" M.H.

NOTES

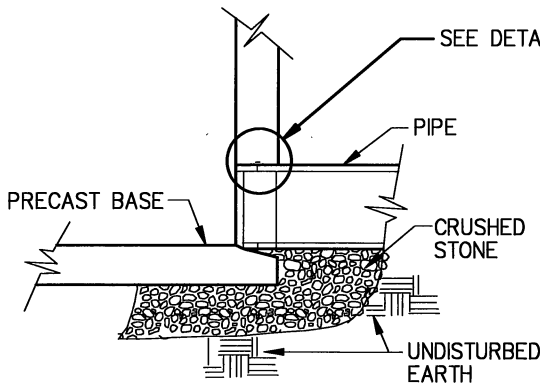
1. INVERT TO BE 3/4 X PIPE DIAMETER
2. USE EXTENDED BASE WITH DEPTH OVER 12'

8" TO 12" PIPE = M.H. 48" I.D.
15" TO 21" PIPE = M.H. 60" I.D.
21" TO 36" PIPE = M.H. 72" I.D.
OVER 36" PIPE = SPECIAL M.H.

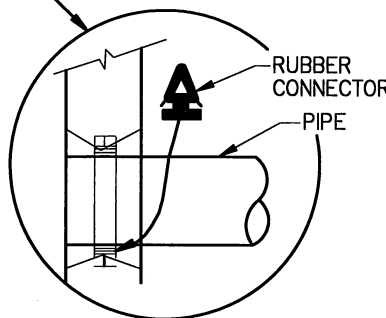
MIN. 18" OF 1" TO NO. 4 (GRAD. #57) CRUSHED STONE (COMPACTED)



NOTE: DROP INLETS TO BE STANDARD WITH TOP PIPE HAVING SHAPED INLET



PRE-CAST BASE JOINT



RUBBER MANHOLE PIPE CONNECTOR
AS SHOWN OR EQUAL

STANDARD DETAIL
PRE-CAST SANITARY SEWER MANHOLES

CITY OF TULSA, OKLAHOMA
ENGINEERING SERVICES DEPARTMENT

DRAWN BY: S.R.W.
CHECKED BY:
DATE: OCTOBER 2013

APPROVED
[Signature]

NOT TO SCALE

STANDARD NO. 358