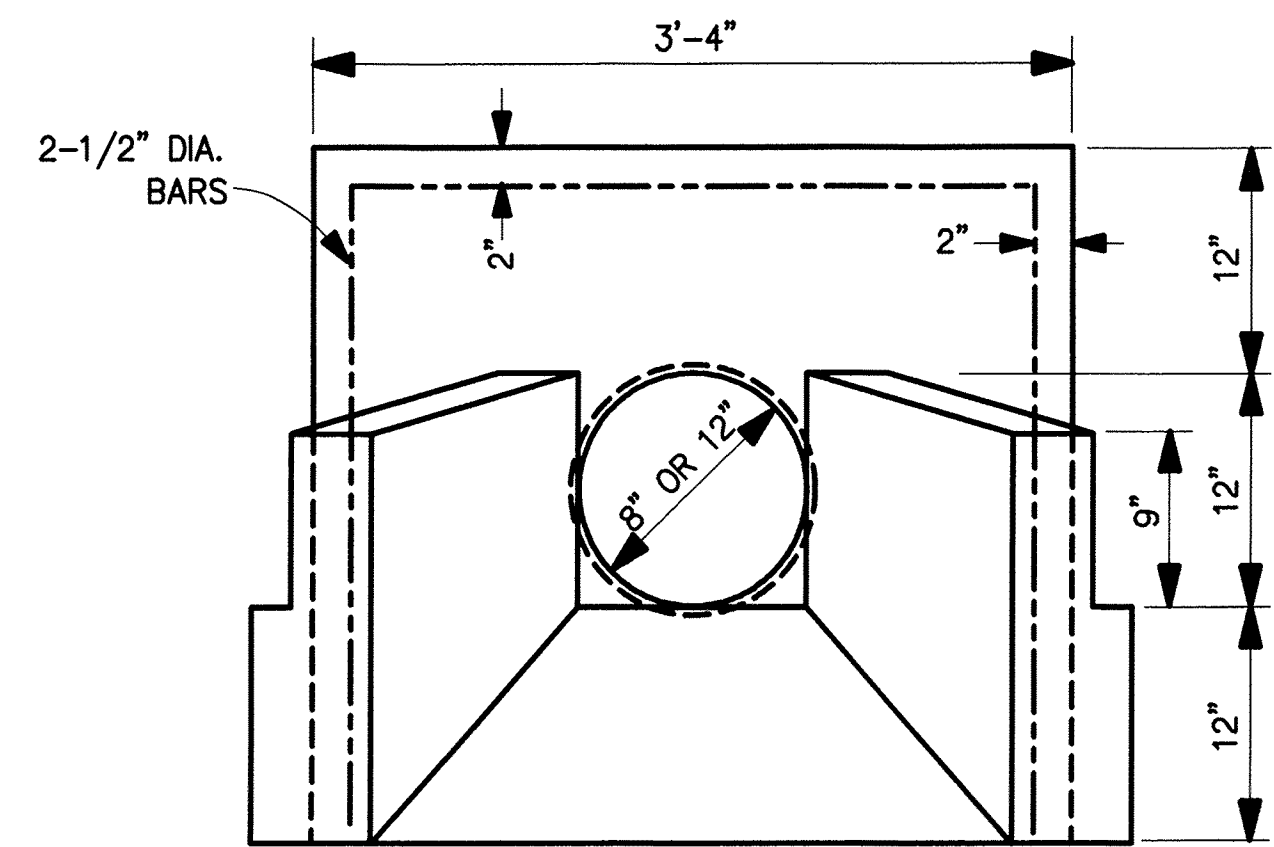
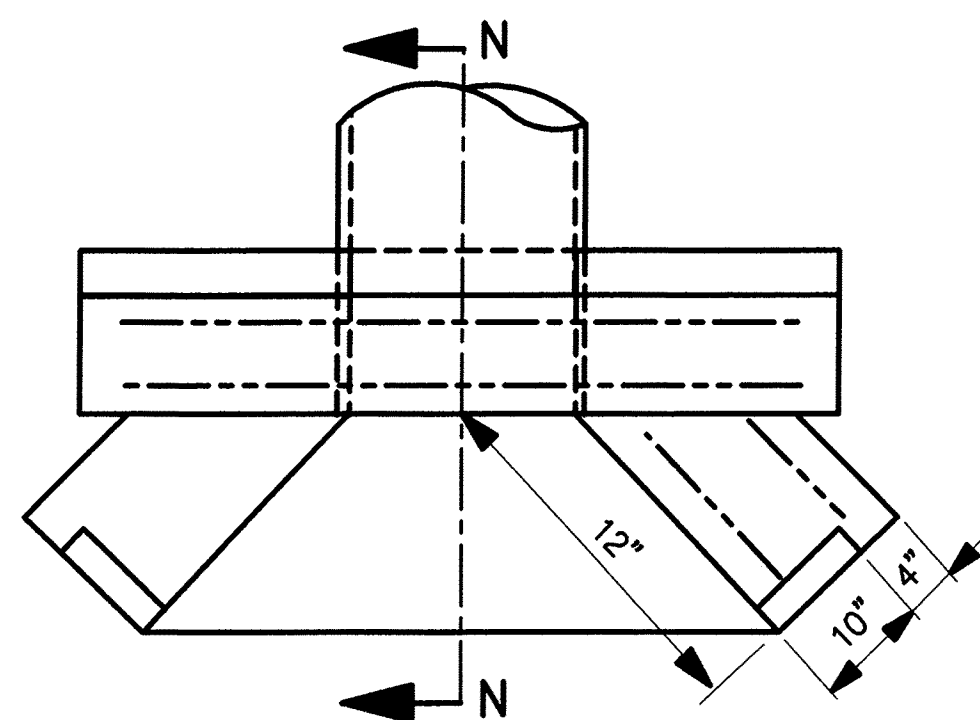


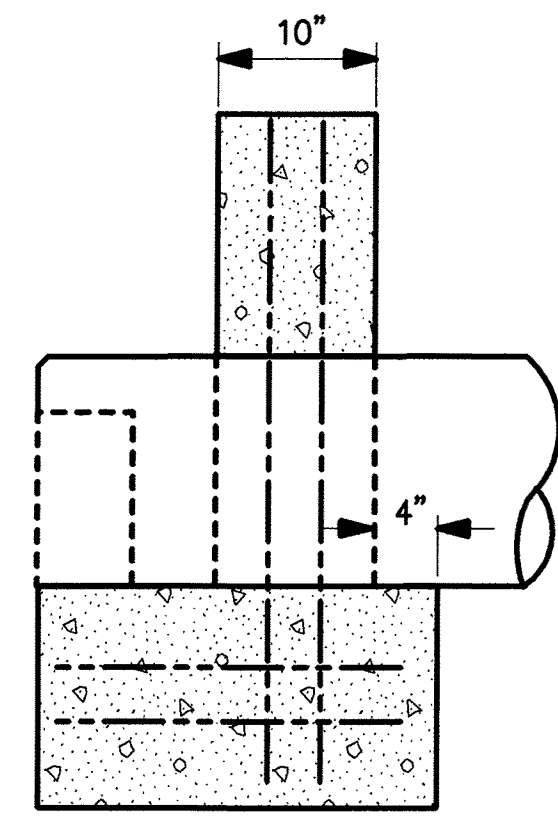
PATH NAME: /E1/PARTS/STD/DGN_STD/329-4IN-8IN-BLOWOFF.DGN LFM 05/02/2012



ELEVATION



PLAN

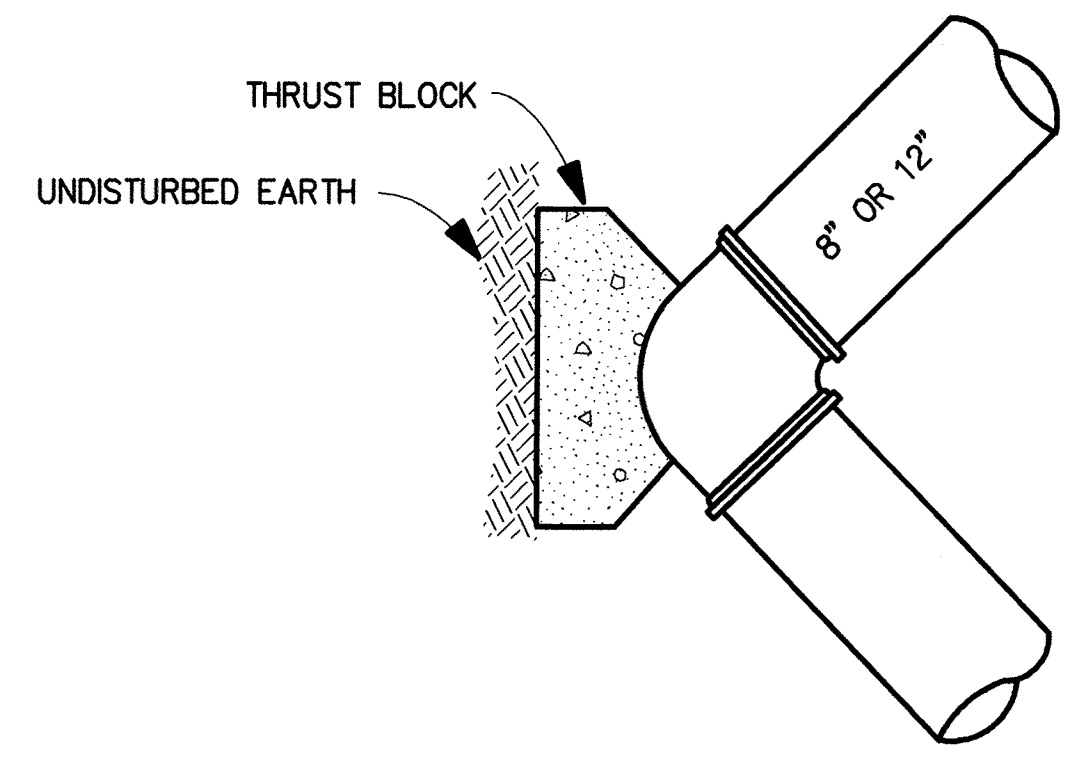


SECTION N-N

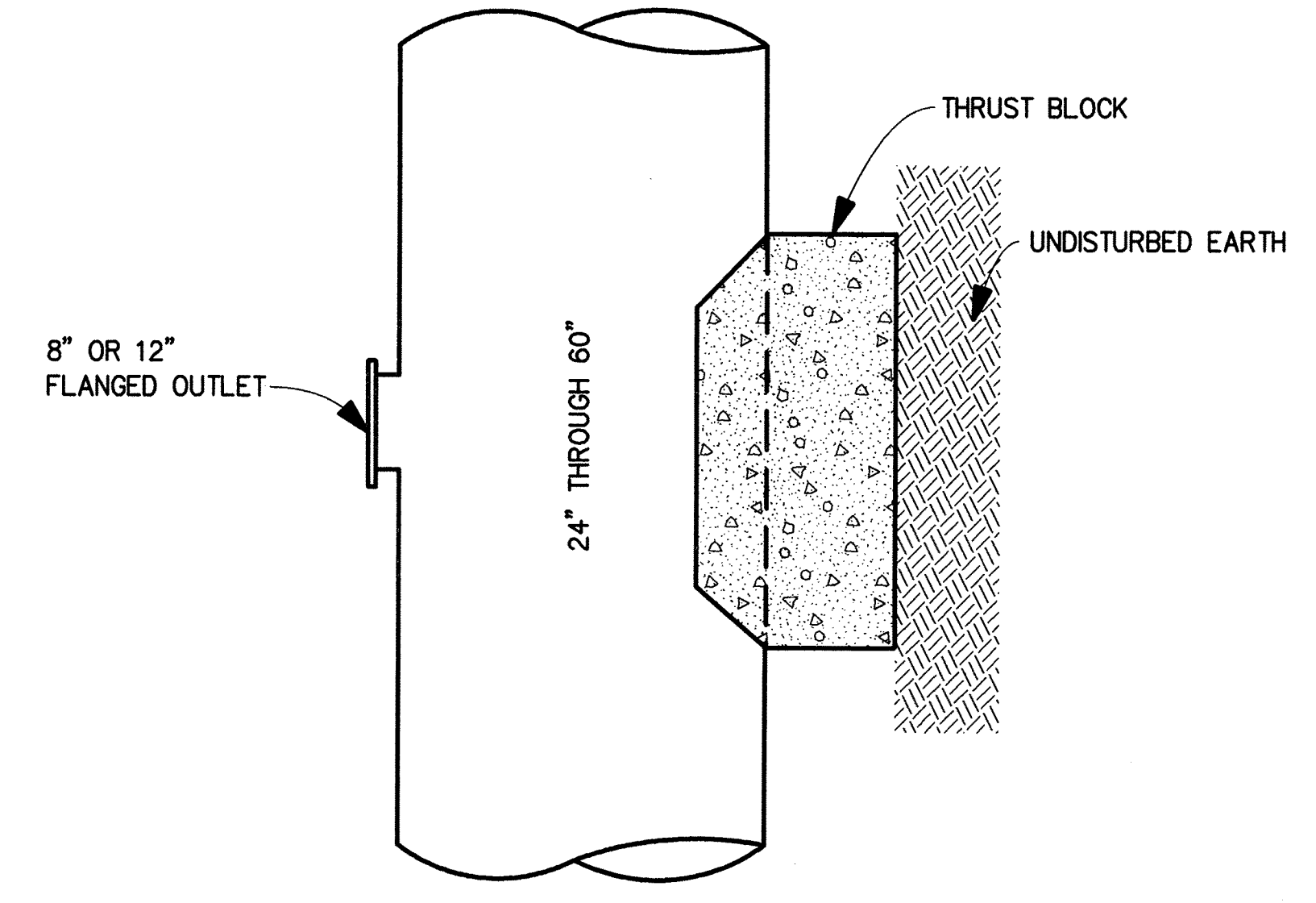
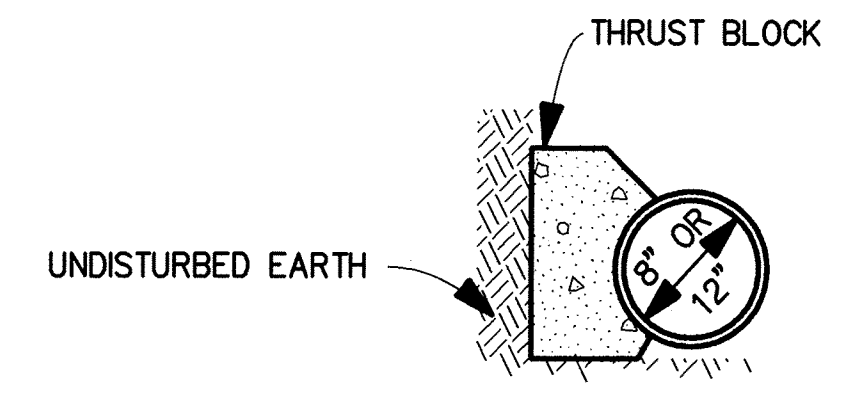
HEADWALL WITH 45° WINGS

QUANTITIES

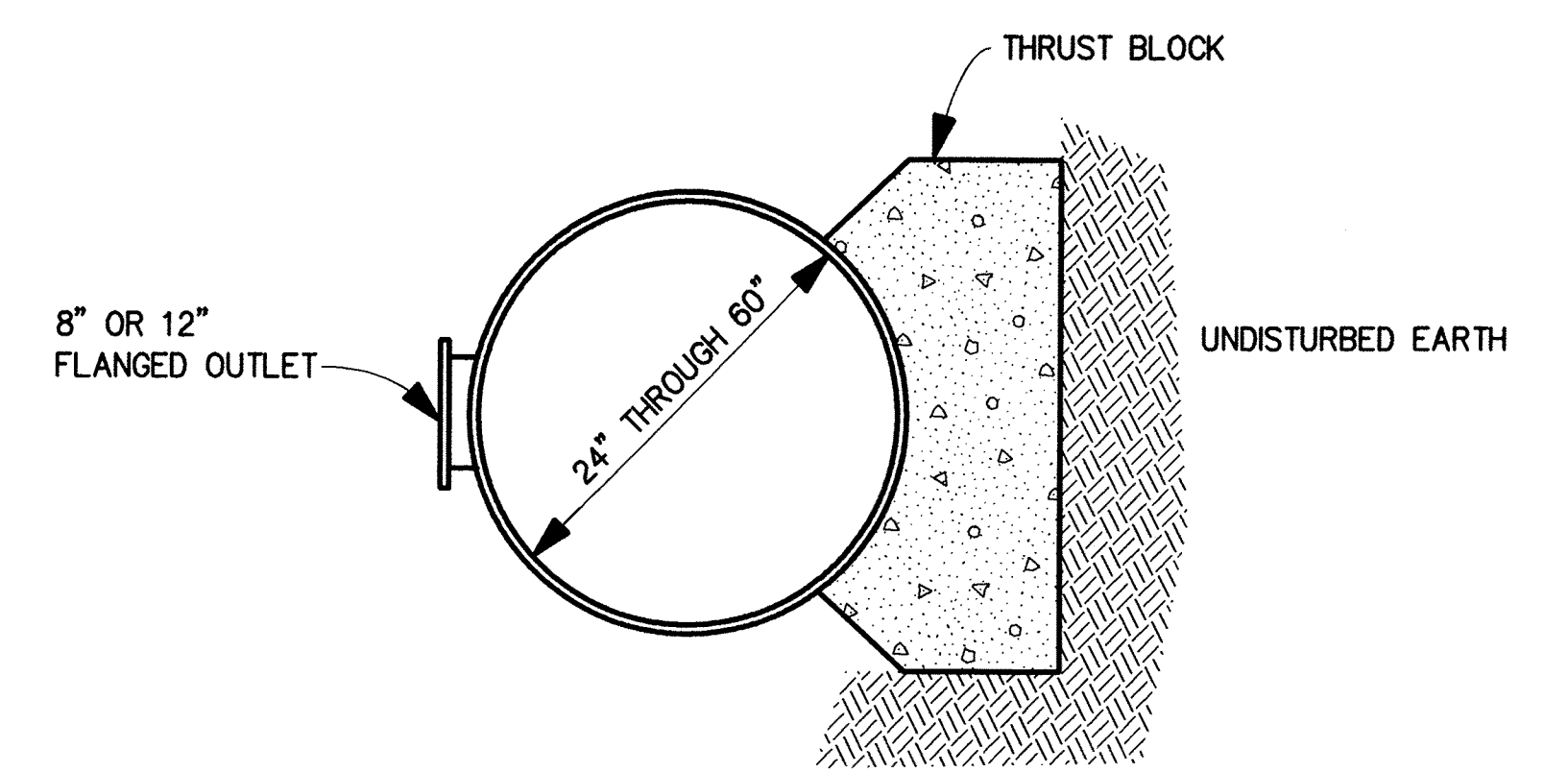
CLASS A CONCRETE	
WALL	5.6 CF
FOOTING AND APRON	7.4 CF
TOTAL	13.0 CF



8" OR 12" 90° BEND

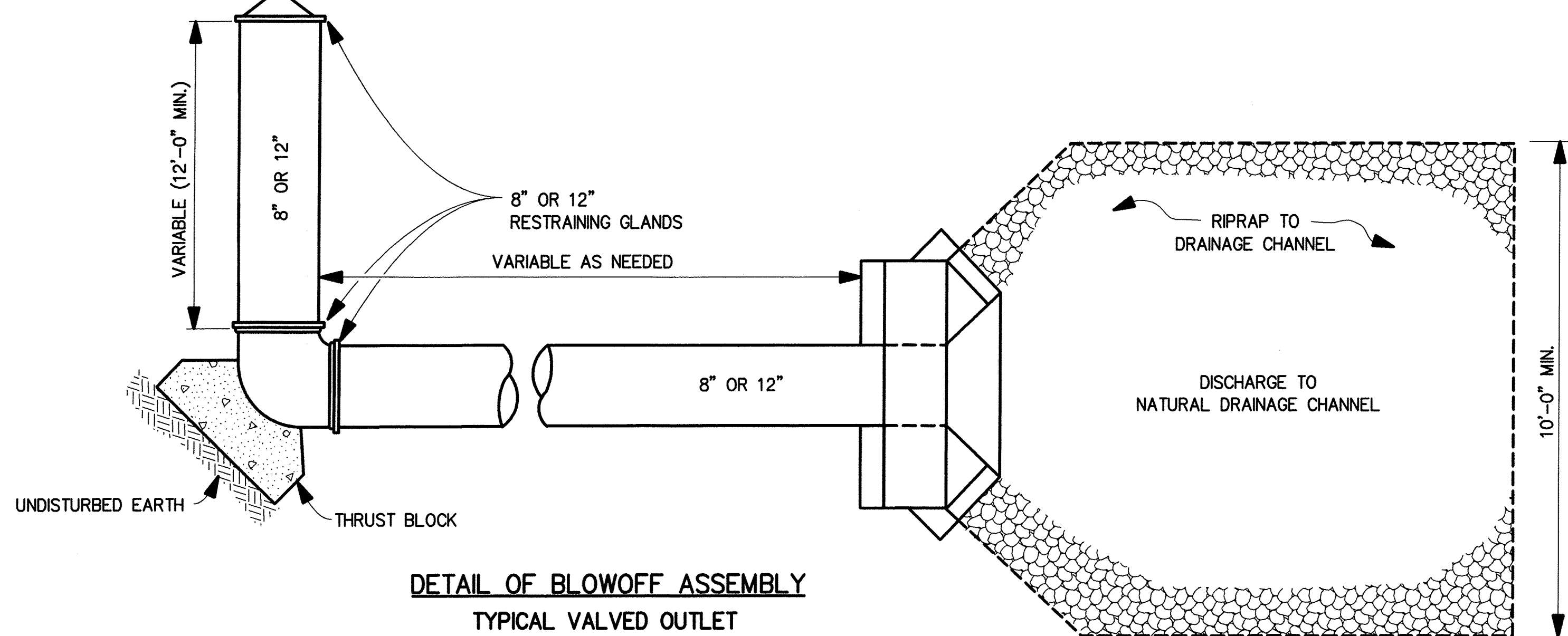
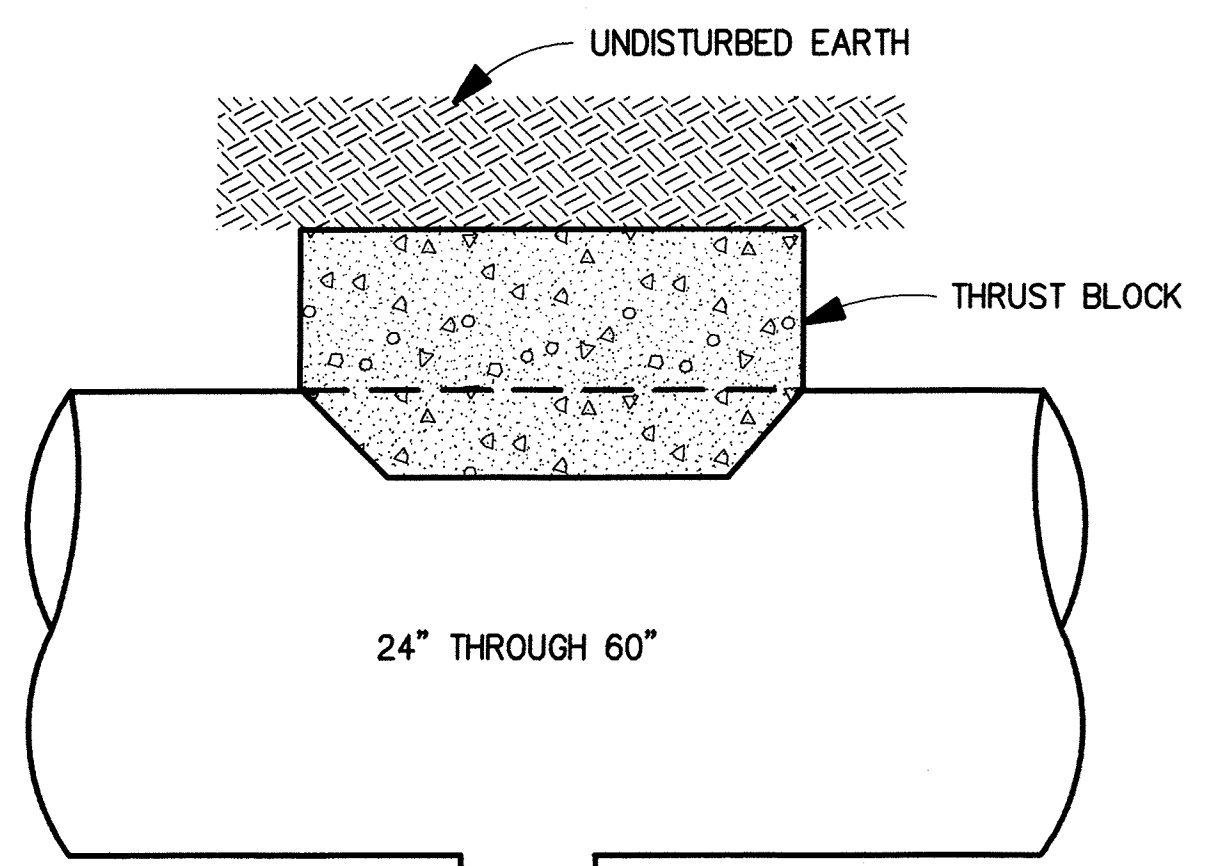


PLAN



ELEVATION

8" OR 12" FLANGED OUTLET
THRUST BLOCK DETAILS
TYPICAL



DETAIL OF BLOWOFF ASSEMBLY
TYPICAL VALVED OUTLET

NOTE:

- FOR RIPRAP:
1. STONE SHALL BE QUARRY-RUN STONE FREE FROM OVERBURDEN SPOIL AND NO PIECE SHALL WEIGH MORE THAN 500 POUNDS. AT LEAST 40 PERCENT OF ANY SHIPMENT SHALL CONSIST OF STONES WEIGHING 100 POUNDS OR MORE.
 2. STONE SHALL BE GRADED SO AS TO PRODUCE A REASONABLY WELL GRADED MASS OF STONE WITH THE MINIMUM PRACTICABLE PERCENTAGE OF VOIDS. HEADWALL STRUCTURE SHALL BE CONSTRUCTED AT AN ELEVATION LOWER THAN THE MAIN LINE.
 3. THE FLANGED OUTLET ON THE MAIN LINE SHALL BE INCLUDED AS PART OF THE BLOWOFF ASSEMBLY.

REVISION	BY	DATE

[Signature]
CITY ENGINEER

[Signature]
DESIGN MANAGER

CITY OF TULSA, OKLAHOMA
ENGINEERING SERVICES DEPARTMENT

STANDARD 8" AND 12"
BLOWOFF ASSEMBLY

DATE: OCTOBER 2013

STD. 329