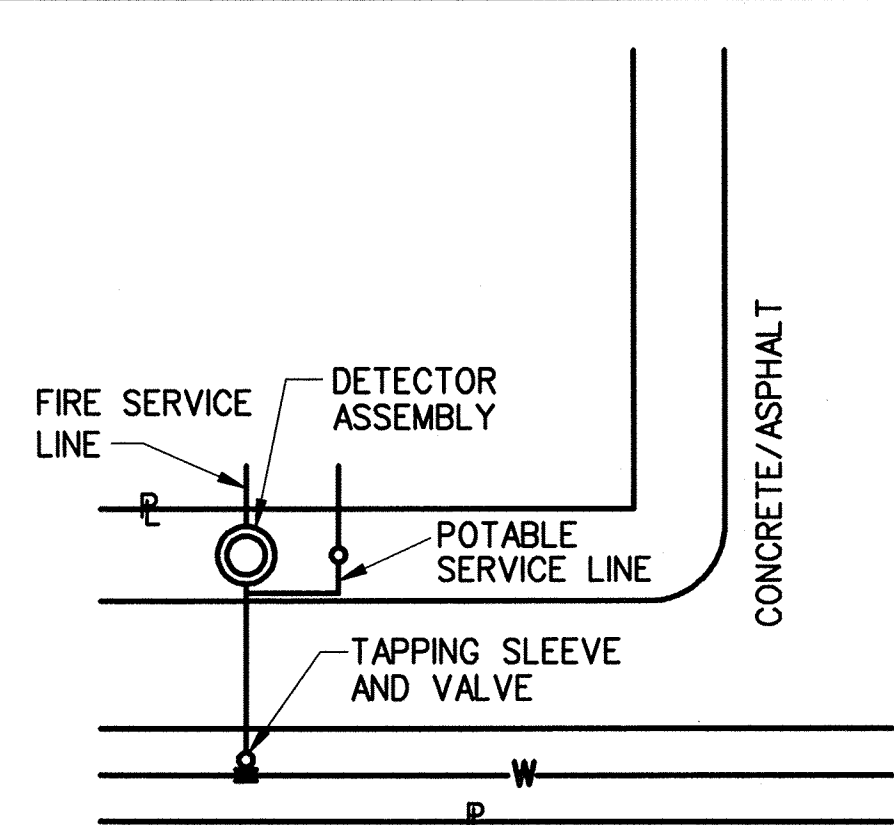
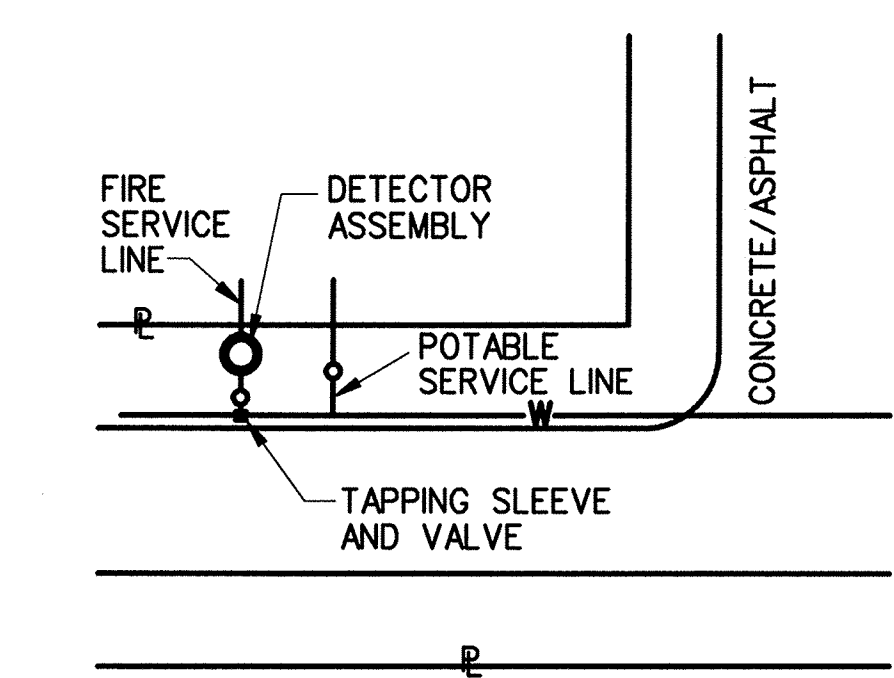


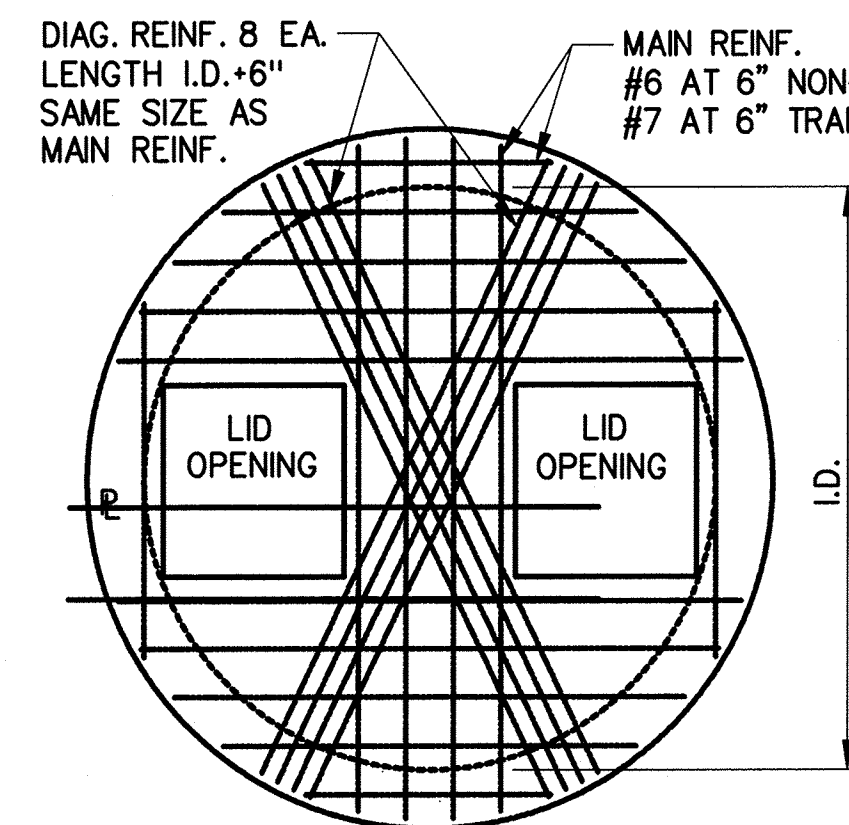
PATH NAME: /E1/PARTS/STD/DGN/STD/553-DBL-CHK-DETECT-REV-2-7-13.DGN SRW 02/07/2013



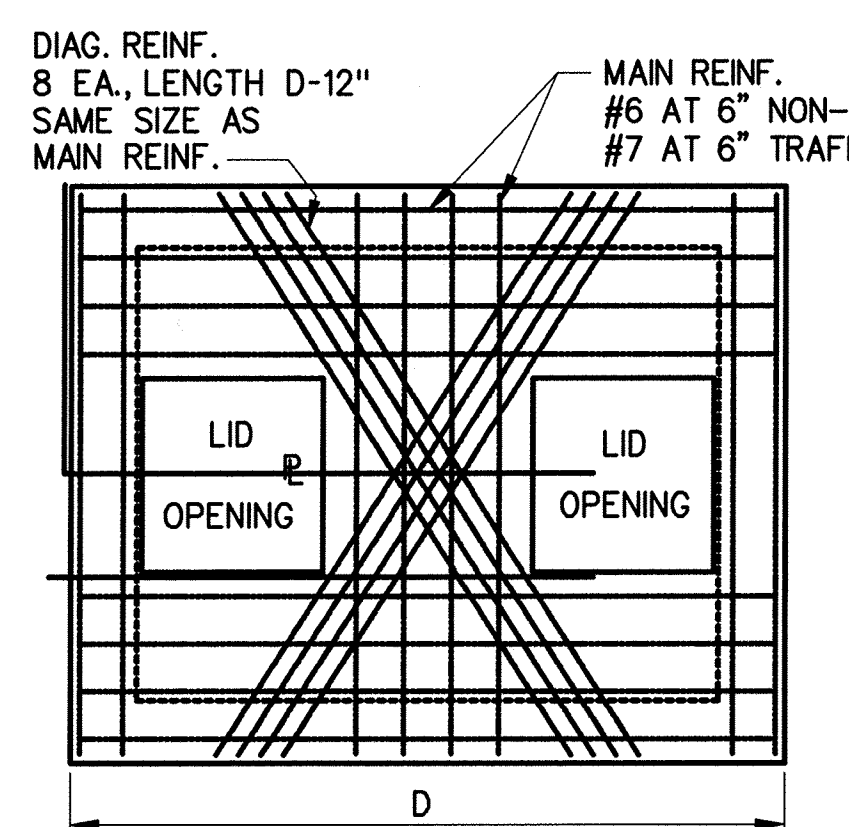
TYPICAL LOCATION
LONG SERVICE



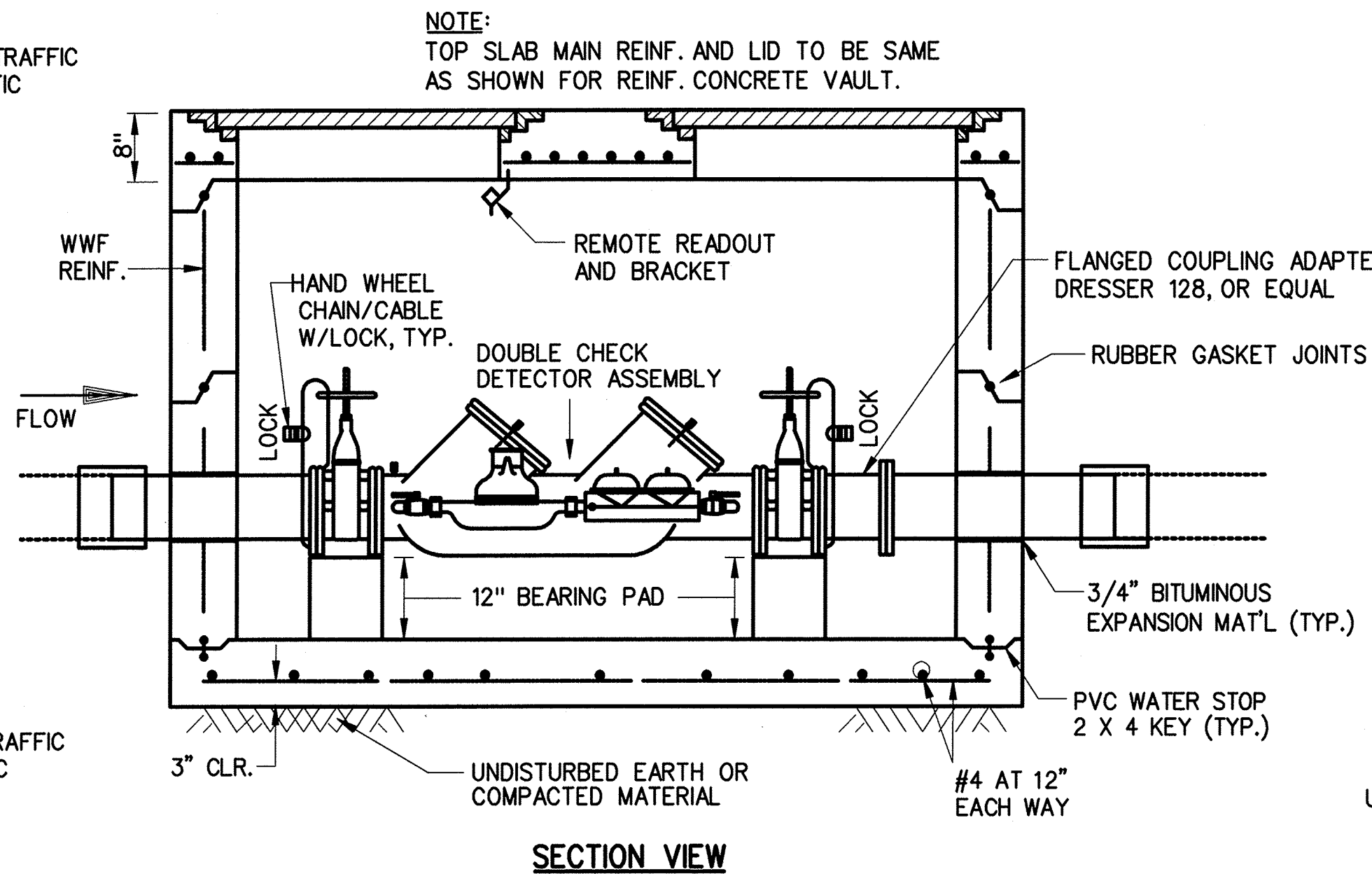
TYPICAL LOCATION
SHORT SERVICE



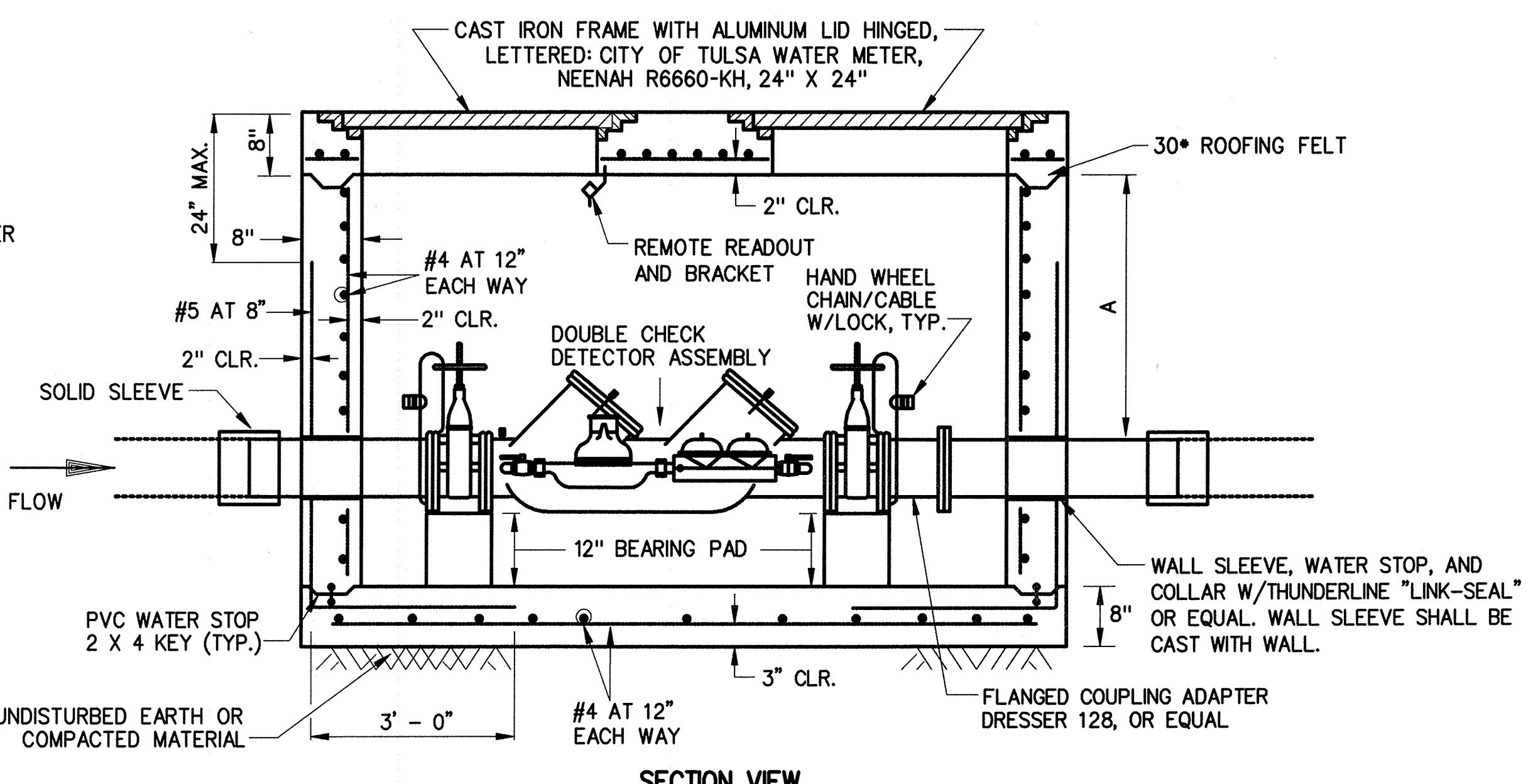
PRECAST VAULT



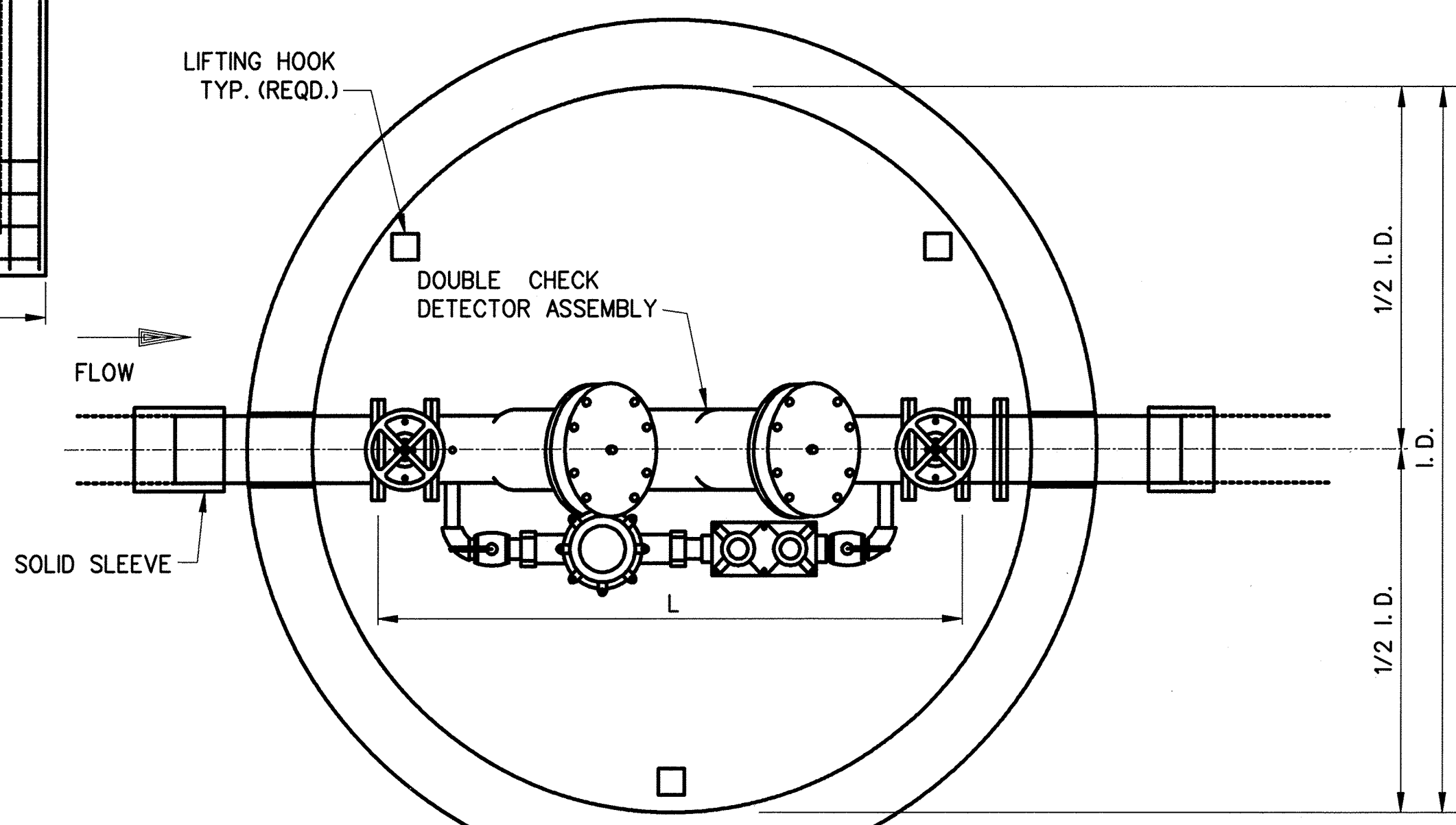
CAST-IN-PLACE VAULT
TOP SLAB REINF. PLAN



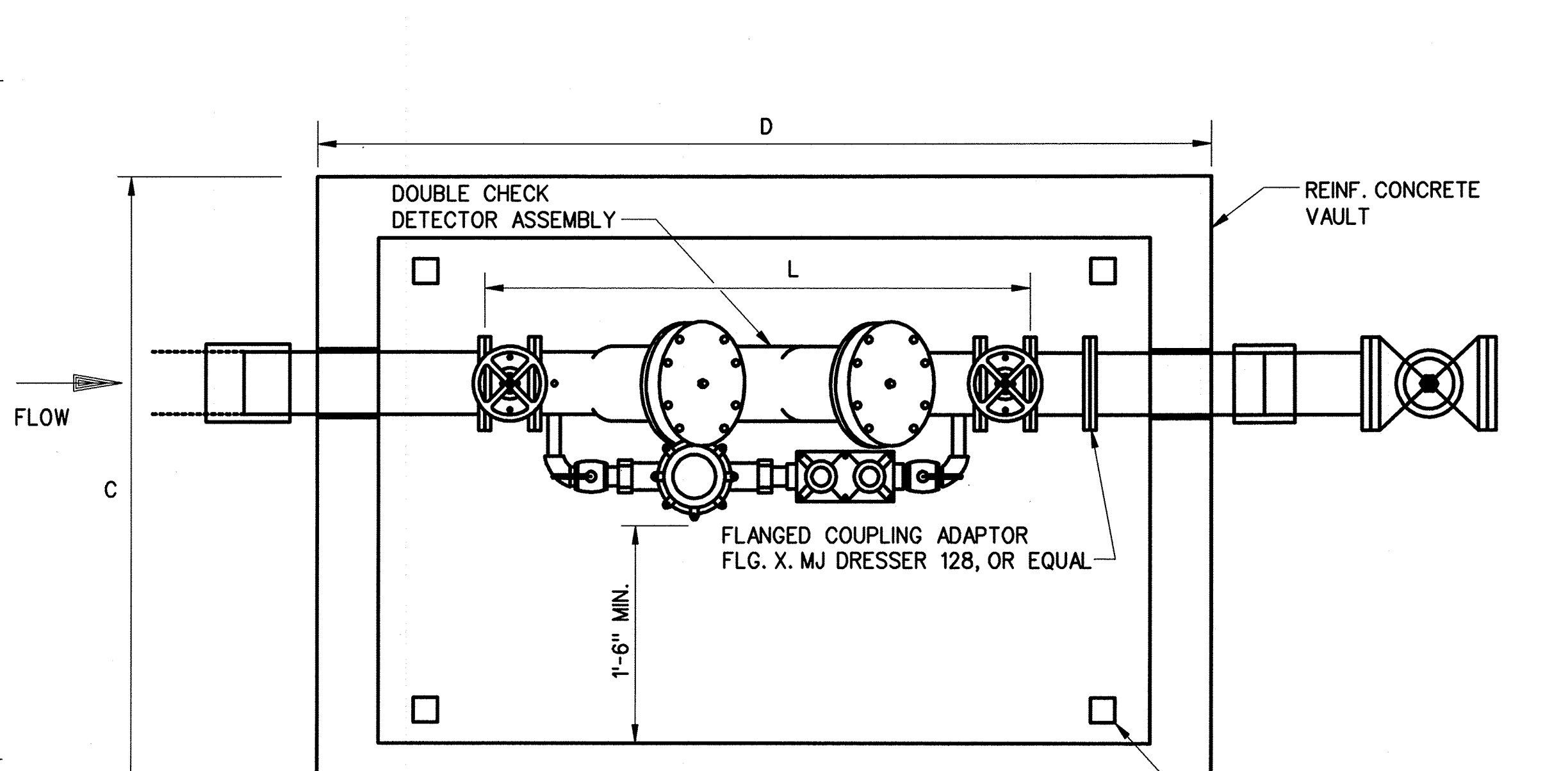
SECTION VIEW



SECTION VIEW



PLAN VIEW
ALTERNATE PRECAST CONCRETE VAULT

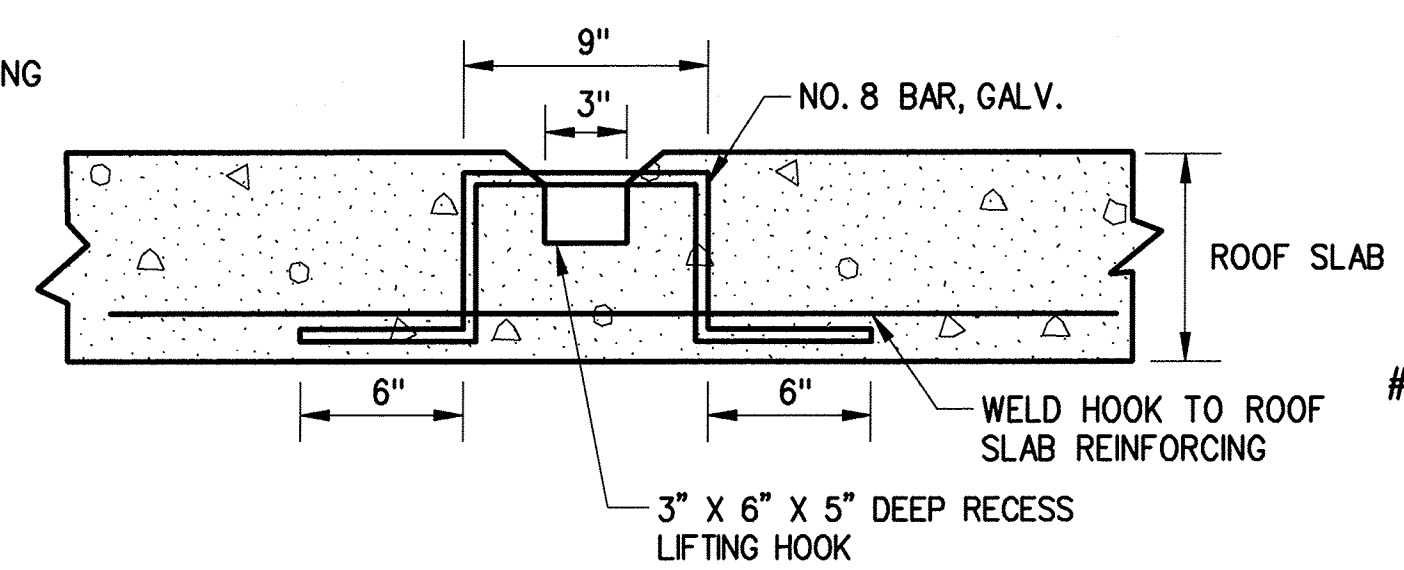


PLAN VIEW
REINFORCED PRECAST CONCRETE VAULT

- NOTE:**
- IT SHALL BE THE RESPONSIBILITY OF THE CONTRACTOR TO FURNISH FITTINGS COMPATIBLE WITH THE TYPE OF PIPE FURNISHED.
 - PRECAST CONCRETE VAULT SECTIONS SHALL CONFORM TO ANSI/ASTM C478.
 - NOTICE SHALL BE GIVEN TO THE ENGINEERING SERVICES DEPARTMENT 48 HOURS IN ADVANCE SO THAT A REPRESENTATIVE OF THE DEPARTMENT MAY WITNESS THE POURING OF THE VAULT AND INSPECT THE MATERIALS. A REPORT SHALL BE FURNISHED ON THE 7 DAY AND 28 DAY STRENGTH OF THE CONCRETE WHICH SHALL BE AT LEAST 4000 PSI. REINFORCING STEEL SHALL BE GR. 60. BOLTS AND NUTS SHALL CONFORM TO ASTM A-307 GR. B, AND ASTM A-563 GR. A RESPECTIVELY. STRUCTURAL STEEL SHALL BE ASTM A-36.
 - WHERE RESTRAINED JOINTS ARE REQUIRED, THEY SHALL BE EBAAMEGALUG SERIES 1100 OR EQUAL.
 - DOUBLE CHECK DETECTOR ASSEMBLY CONSISTS OF A DOUBLE CHECK VALVE, TWO RESILIENT WEDGED GATE VALVES, AND A PARALLEL METER ASSEMBLY WITH DOUBLE CHECK VALVE. THE ASSEMBLY SHALL BE TESTED BY A CITY OF TULSA APPROVED BACK FLOW ASSEMBLY TESTER BEFORE IT WILL BE ACCEPTED.
 - USE DUCTILE IRON PIPING AND DI/CI FITTINGS FROM THE MAIN LINE TAPPING SLEEVE TO DOWNSTREAM FROM THE METER CHECK VALVE AT THE CONNECTING SLEEVE. PIPE SHALL BE WRAPPED WITH POLYETHYLENE FILM AND TAPED.
 - DRAWINGS NOT TO SCALE.

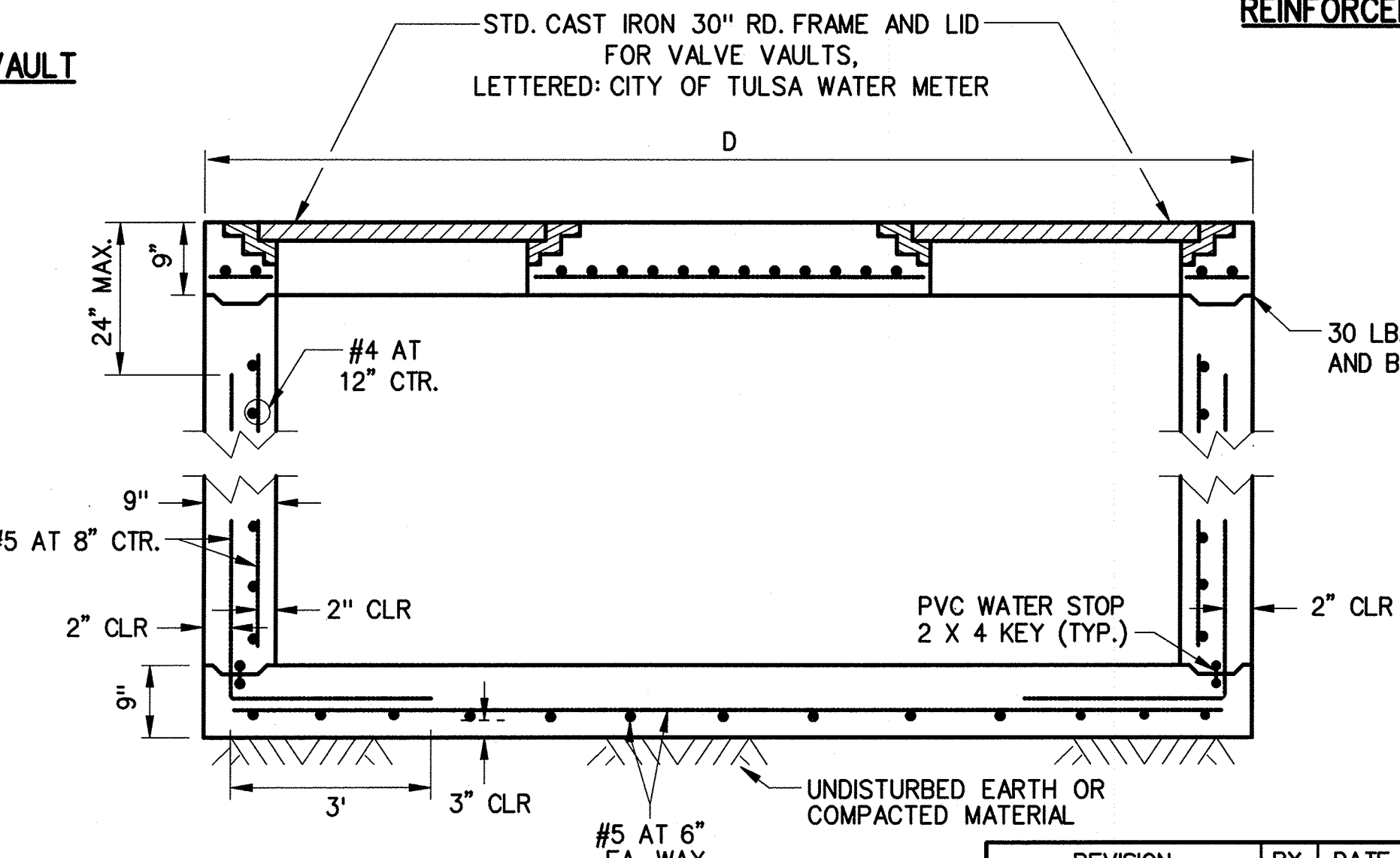
LINE AND DET. CHECK SIZE	DIM. A MIN.	DIM. C MIN.	DIM. D* MIN.	PRECAST CONC. I. D., MIN.
4"	3'	5'- 6"	L + 40"	L + 24"
6"	3'	5'- 9"	L + 40"	L + 24"
8"	4'	6'- 0"	L + 40"	L + 24"
10"	5'	6'- 3"	L + 40"	L + 24"

L = LAYING LENGTH OF ASSEMBLY INCLUDING VALVES
 MIN. WALL THICKNESS OF PRECAST VAULT = (1/12 X I.D.) + 1"
 MIN. I.D. FOR PRECAST VAULT SHALL BE 72"
 * MINIMUM DIM. D FOR CAST-IN-PLACE VAULT SHALL BE 88"



LIFTING HOOK DETAIL

NOTE: IN SIDEWALKS, COVER HOOK OPENING WITH A STEEL PLATE. SECURE WITH SCREWS AND EXPANSION SLEEVE ANCHORS.



SECTION VIEW
VALVE VAULT FOR TRAFFIC LOADS

REVISION	BY	DATE

[Signature]
CITY ENGINEER

[Signature]
DESIGN MANAGER

CITY OF TULSA, OKLAHOMA
ENGINEERING SERVICES DEPARTMENT

4"-10" DOUBLE DETECTOR CHECK AND VAULT ASSEMBLY

DATE: OCTOBER 2013

STD. 553