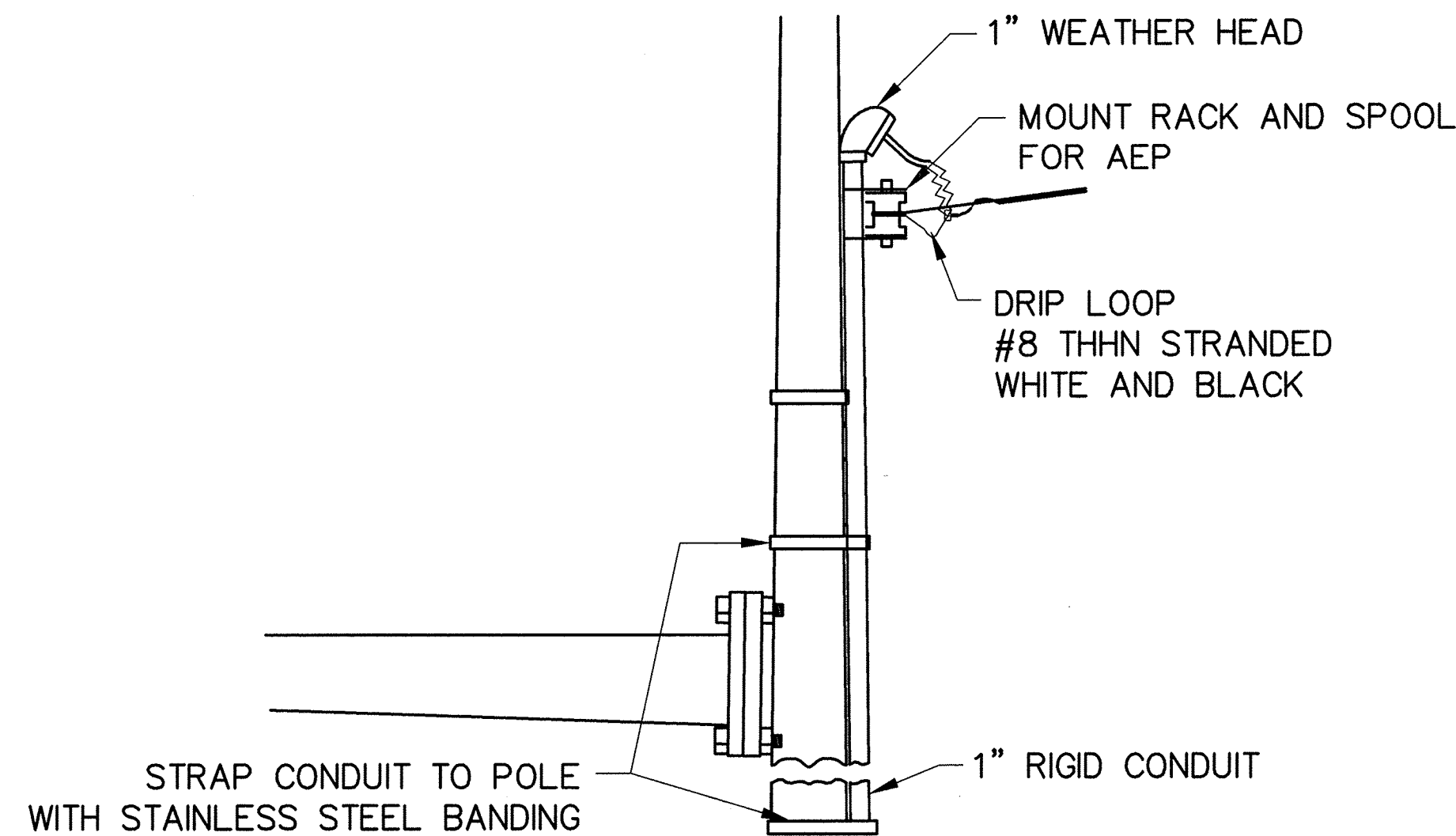
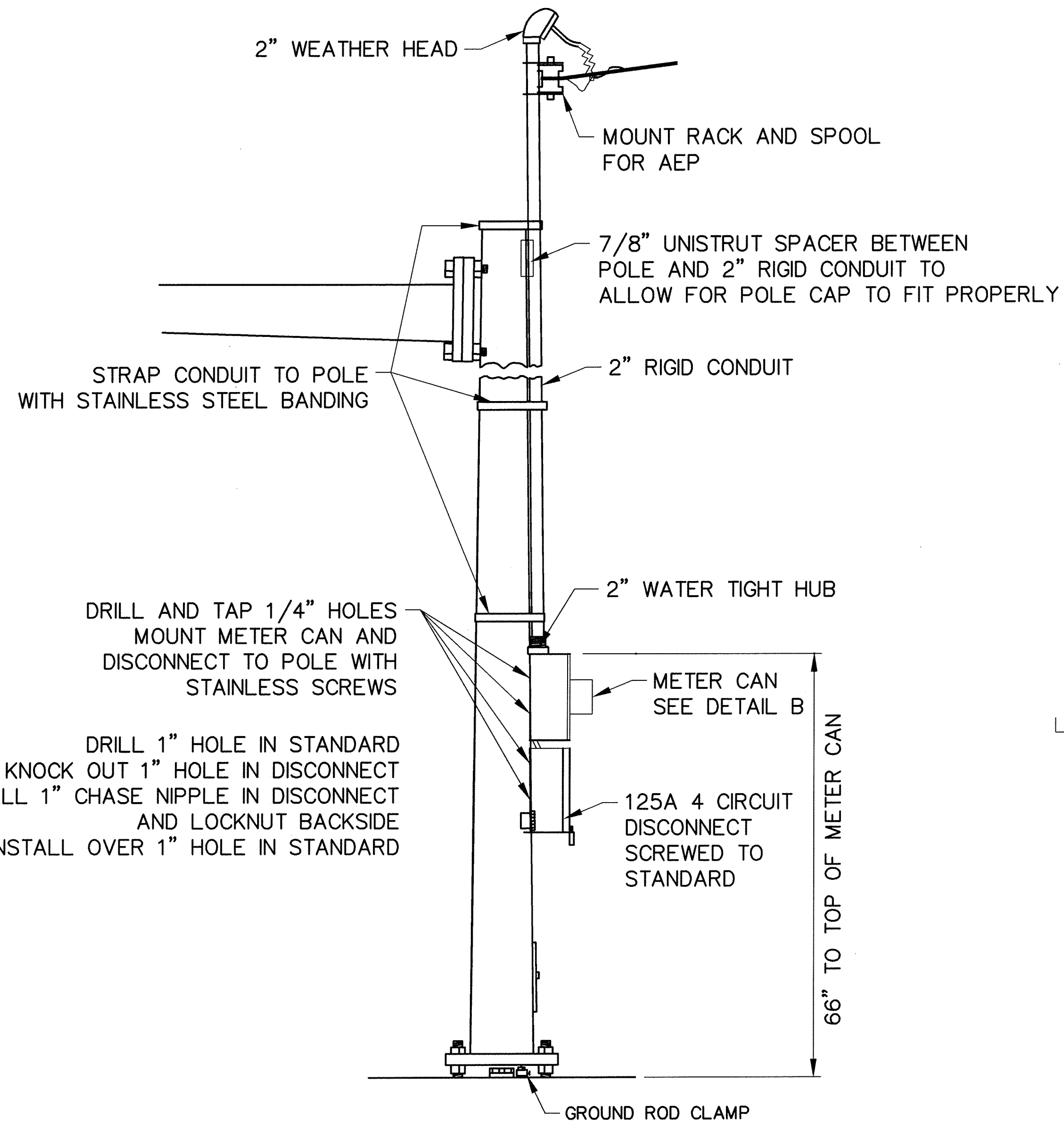


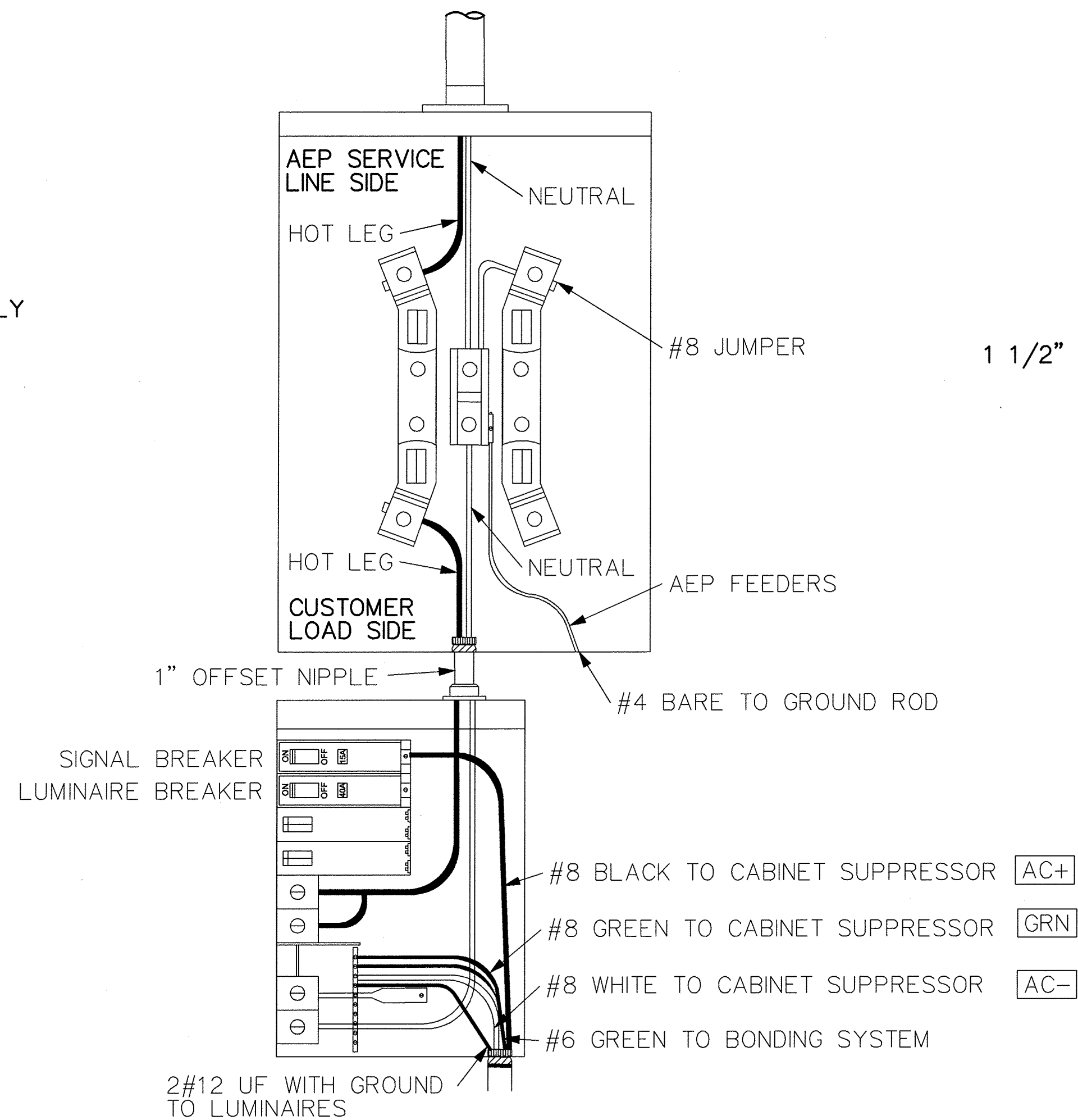
PATH NAME: /E1/PARTS/STD/DGN/STD/607A-traffic-signal-svc-pole.dgn SBW 09/17/2012



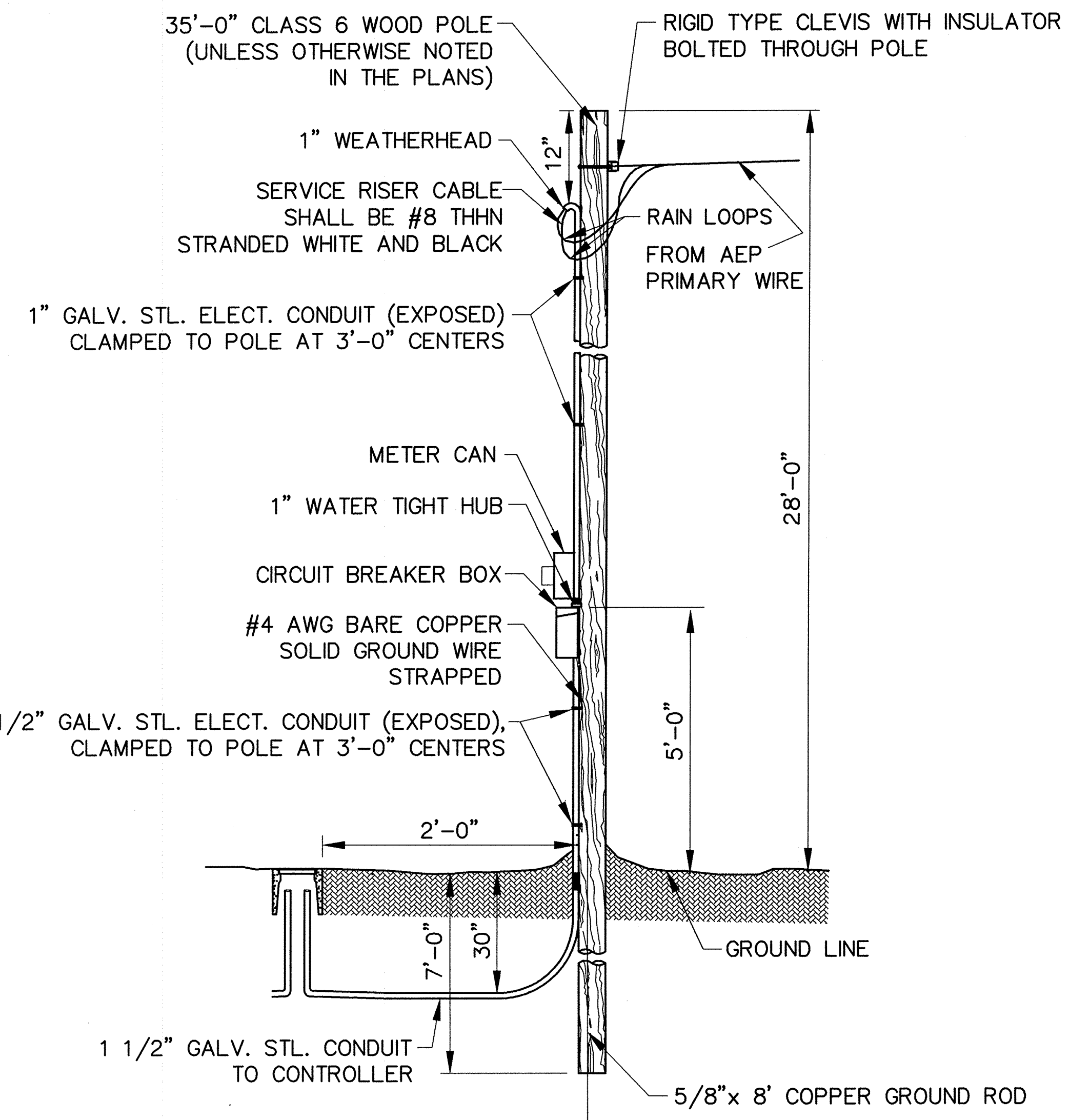
SERVICE TO SIGNAL STANDARD WITH LUMINAIRE



SERVICE TO SIGNAL STANDARD



METER AND DISCONNECT WIRING



OVERHEAD SERVICE TO SERVICE POLE

REVISION	BY	DATE

Valdery
CITY ENGINEER

Rust W. Roth
CITY TRAFFIC ENGINEER

CITY OF TULSA, OKLAHOMA
ENGINEERING SERVICES DEPARTMENT

TRAFFIC SIGNAL SERVICE POLE
AND SERVICE TO SIGNAL STANDARD

DATE: OCTOBER 2013

STD. 607A