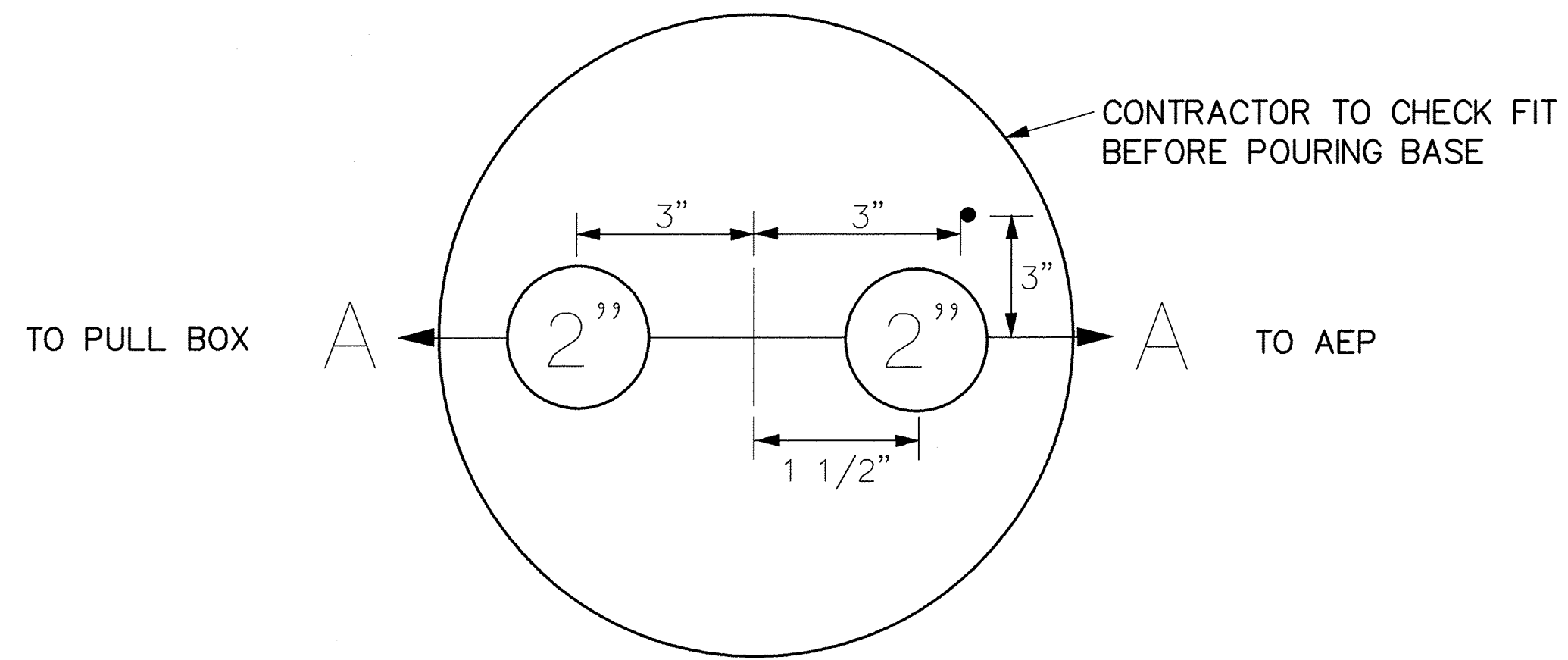
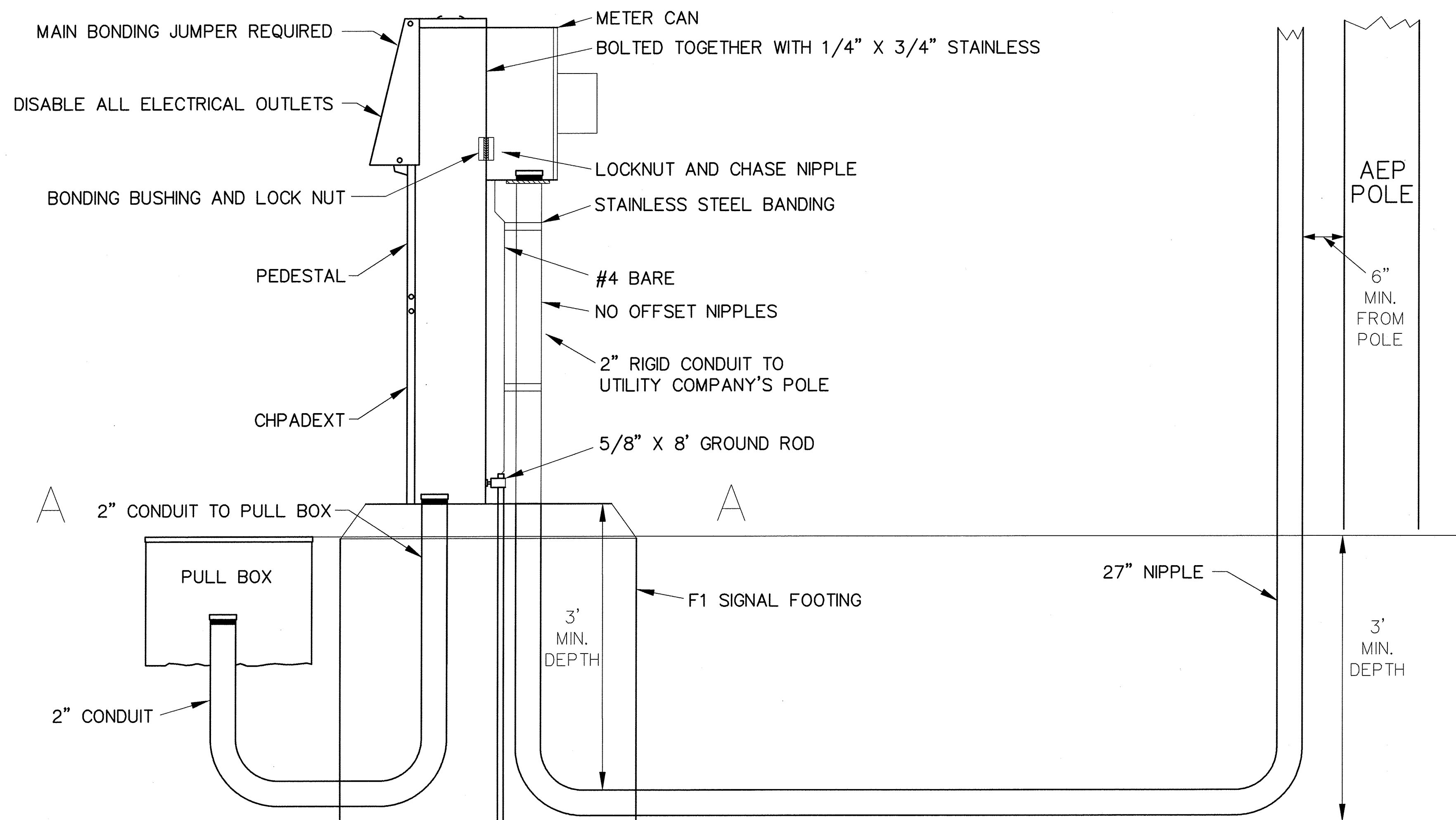


PATH NAME: /E1/PARTS/STD/DGN\_STDS/607B-traffic-svc-pole.dgn SBW 09/17/2012



**PEDESTAL SERVICE INSTALLATION - SECTION A-A**



**PEDESTAL SERVICE INSTALLATION**  
CUTLER HAMMER CHU4N7NP, CHPADEXT

REVISION	BY	DATE

*Valdez*  
CITY ENGINEER

*Ruth W. Ziff*  
CITY TRAFFIC ENGINEER

CITY OF TULSA, OKLAHOMA  
ENGINEERING SERVICES DEPARTMENT

TRAFFIC SIGNAL PEDESTAL SERVICE

DATE: OCTOBER 2013

STD. 607B