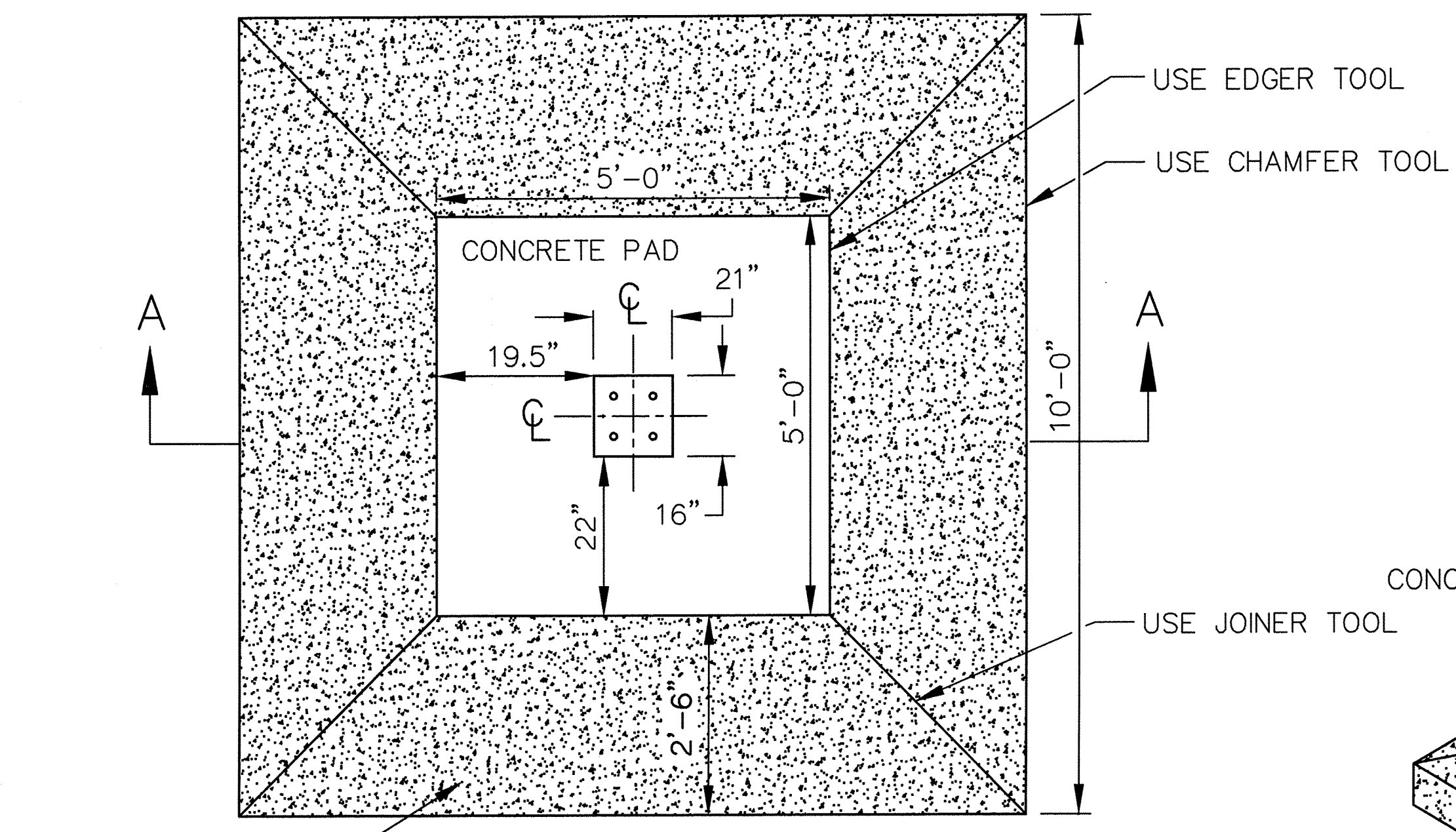
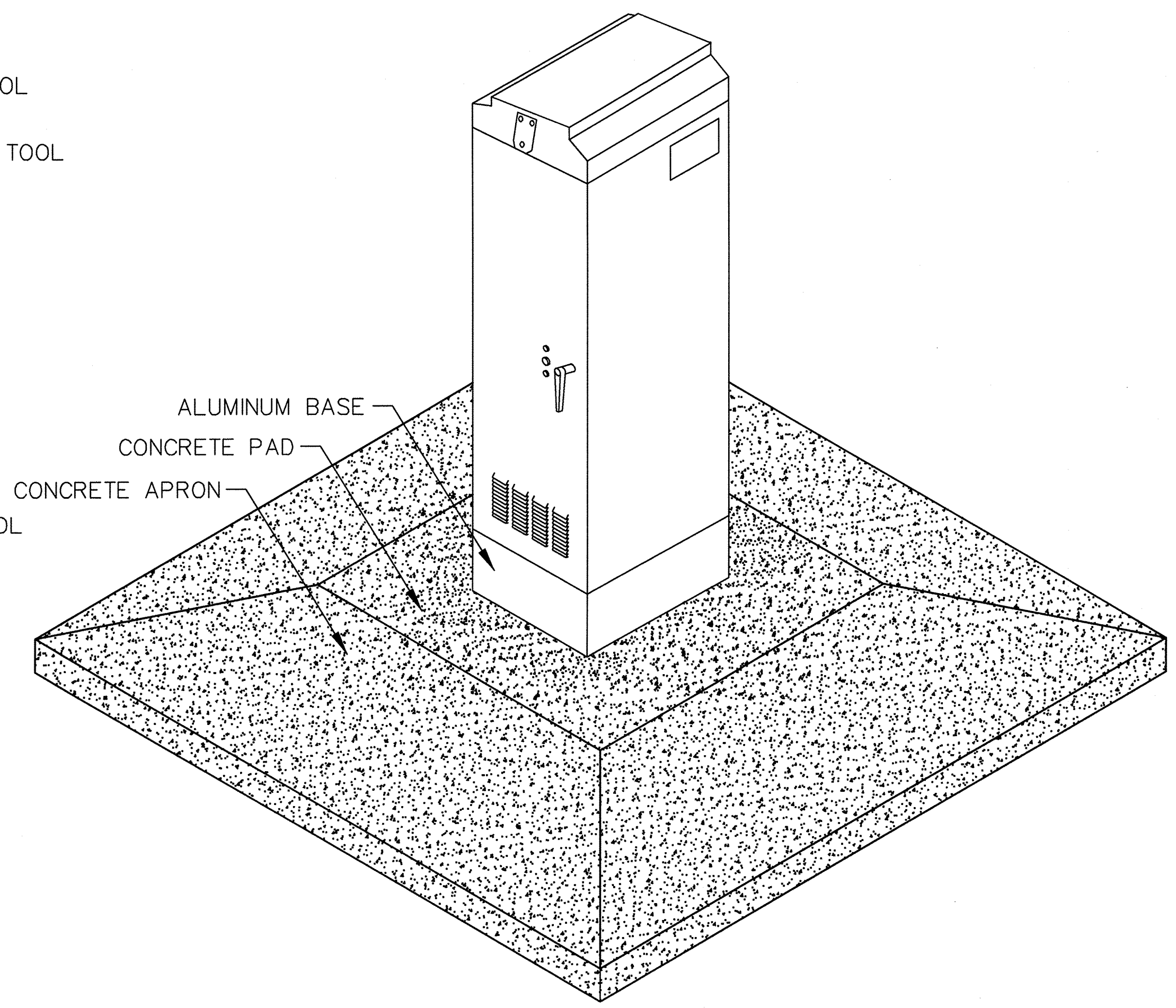


PATH NAME: /E1/PARTS/STD/DGN_STDS/610A-ctrl-cbnt-det_332.dgn SBW 09/14/2012



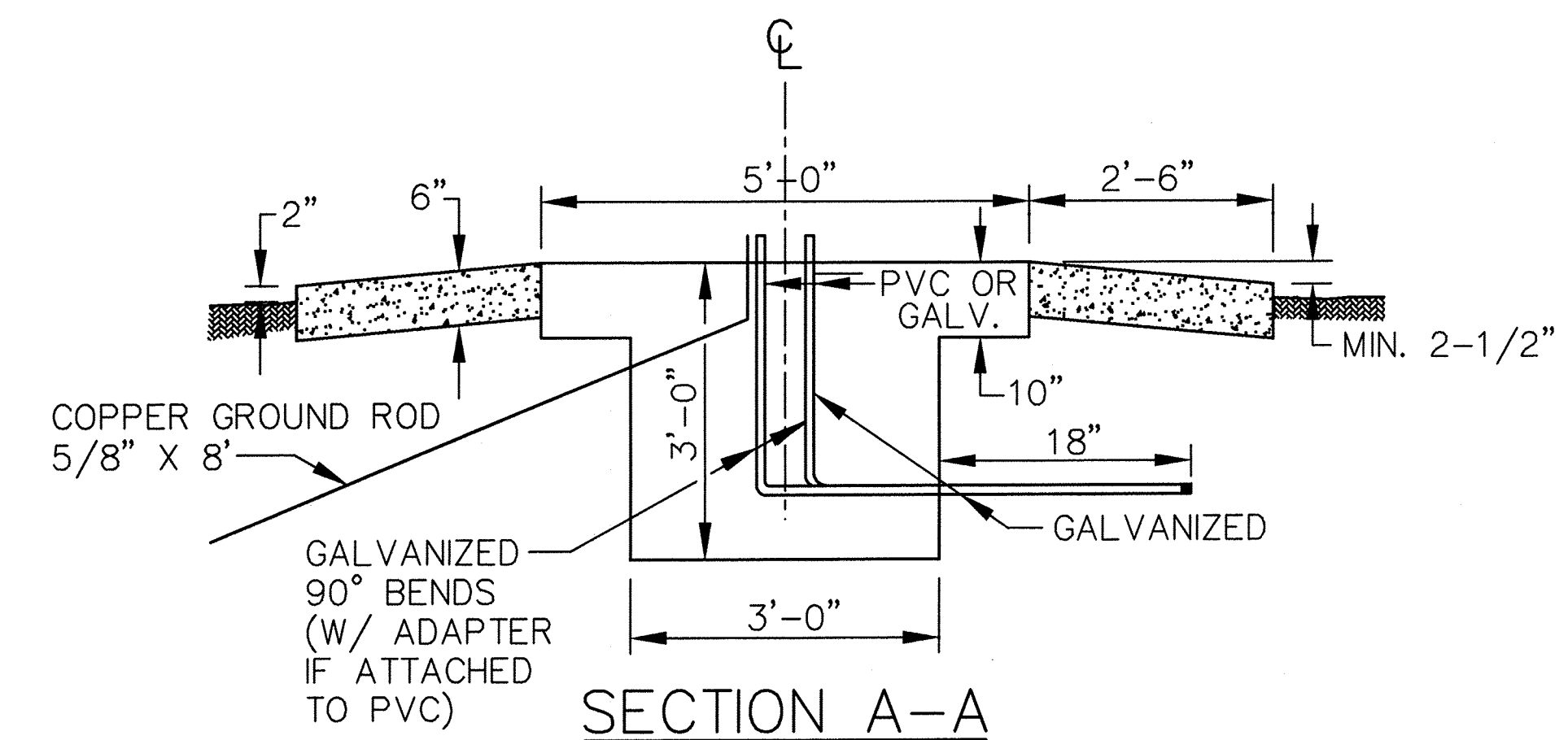
TOP VIEW
TYPICAL 332 CONTROL BASE



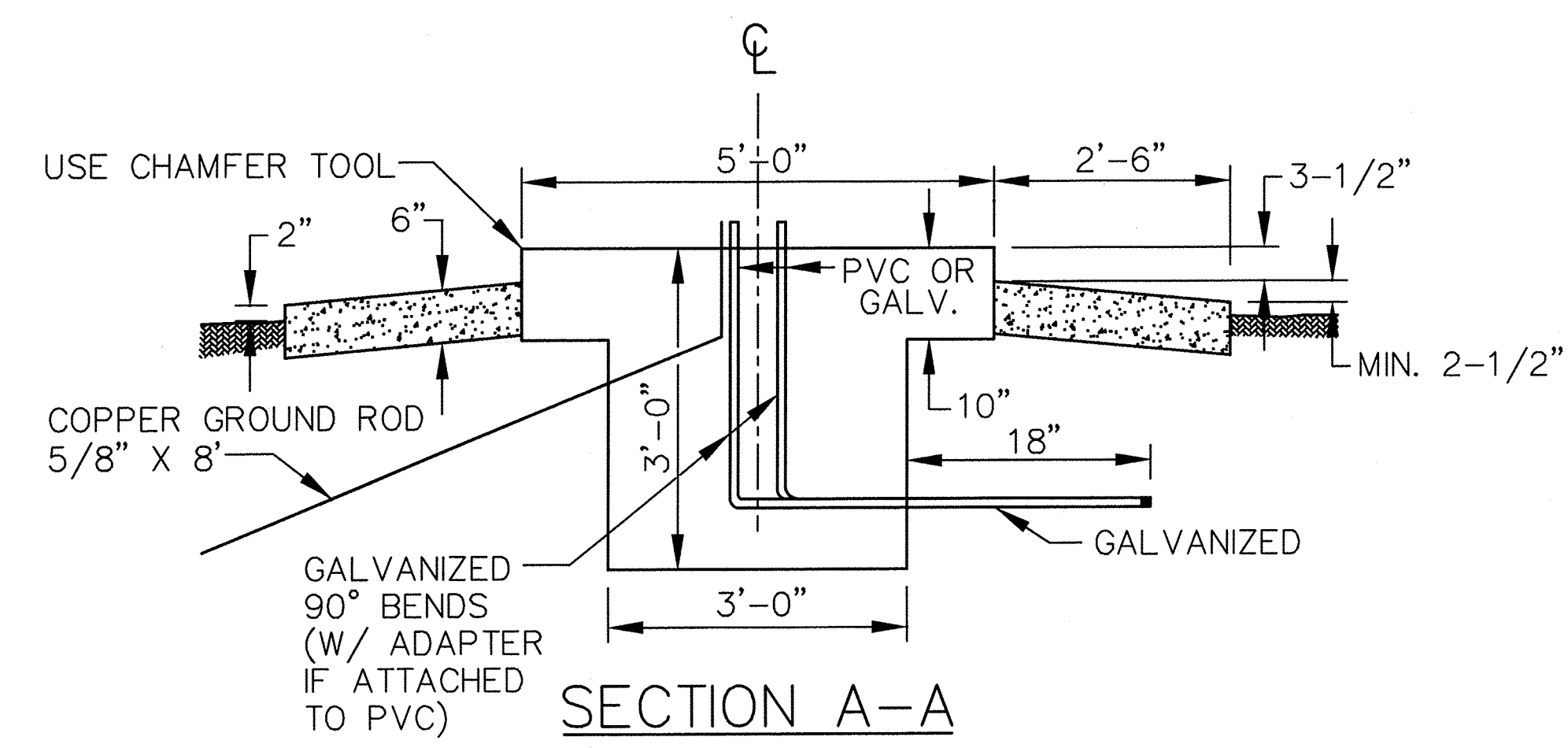
TYPICAL CONTROLLER CABINET INSTALLATION

NOTE:

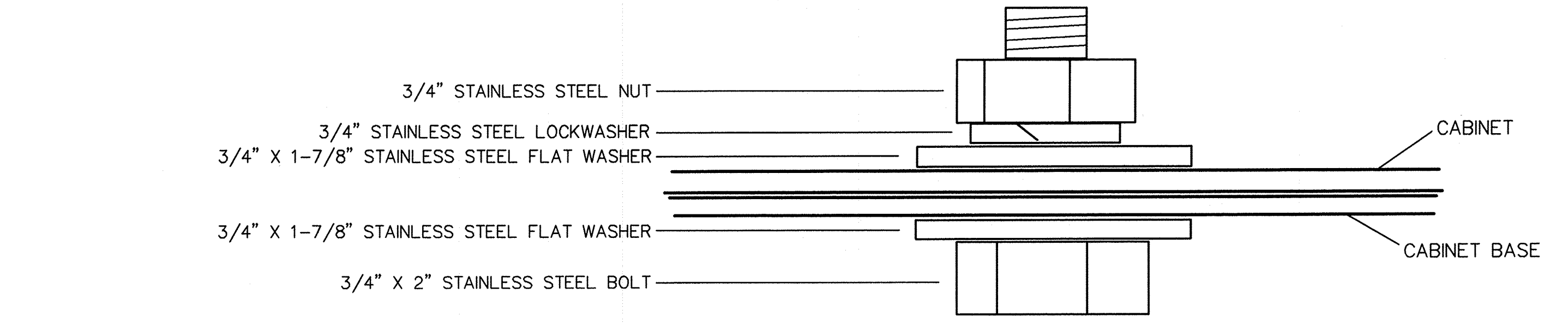
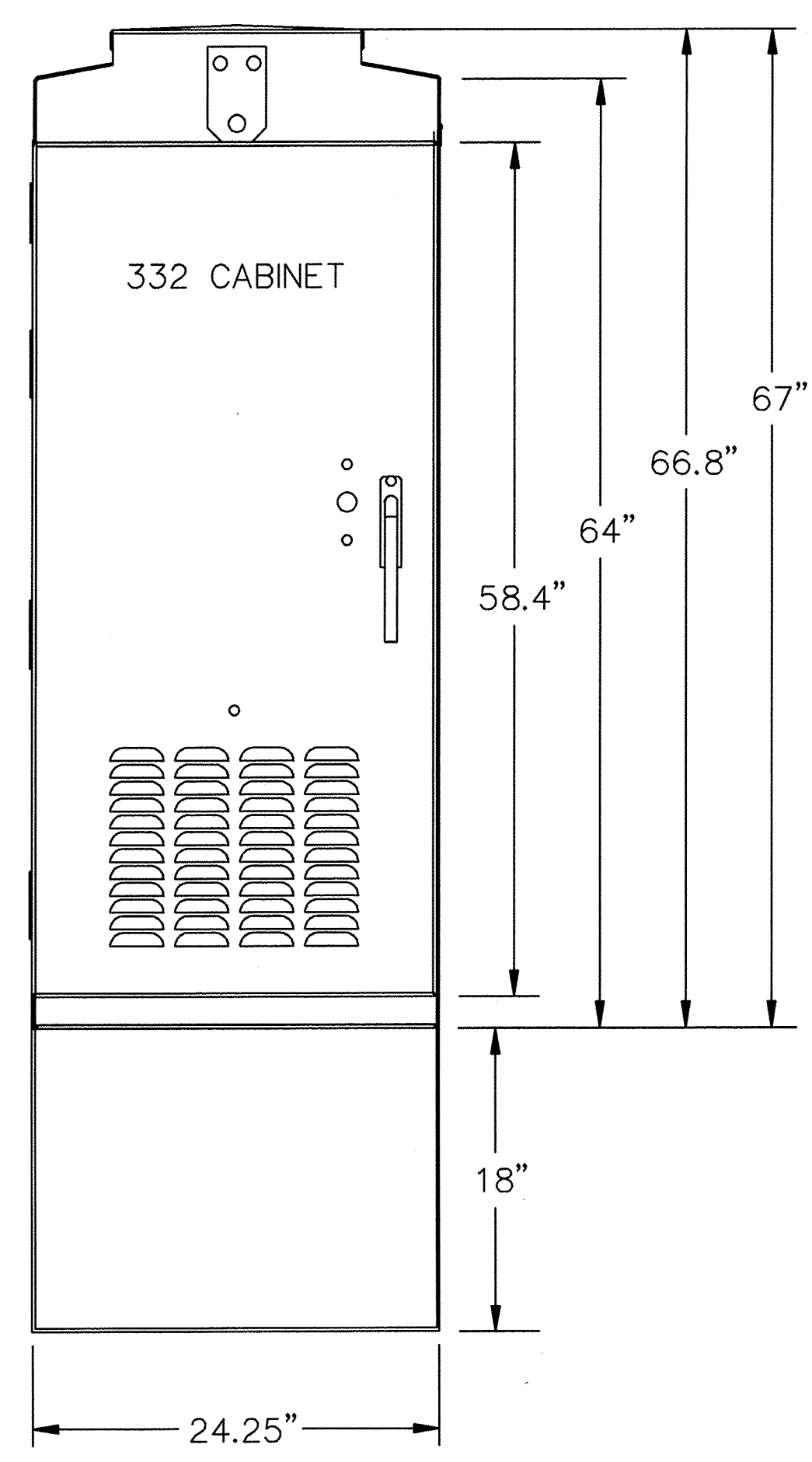
1. ALL MEASUREMENTS ARE FROM FINISH GRADE.
2. ALL CONDUIT TO BE SPECIFIED BY ENG. PLANS.
3. CONDUIT CLUSTER AT THE CENTER OF THE CONCRETE PAD SHALL BE THE HIGH POINT OF THE PAD TO PREVENT WATER FROM POOLING ON THE PAD.



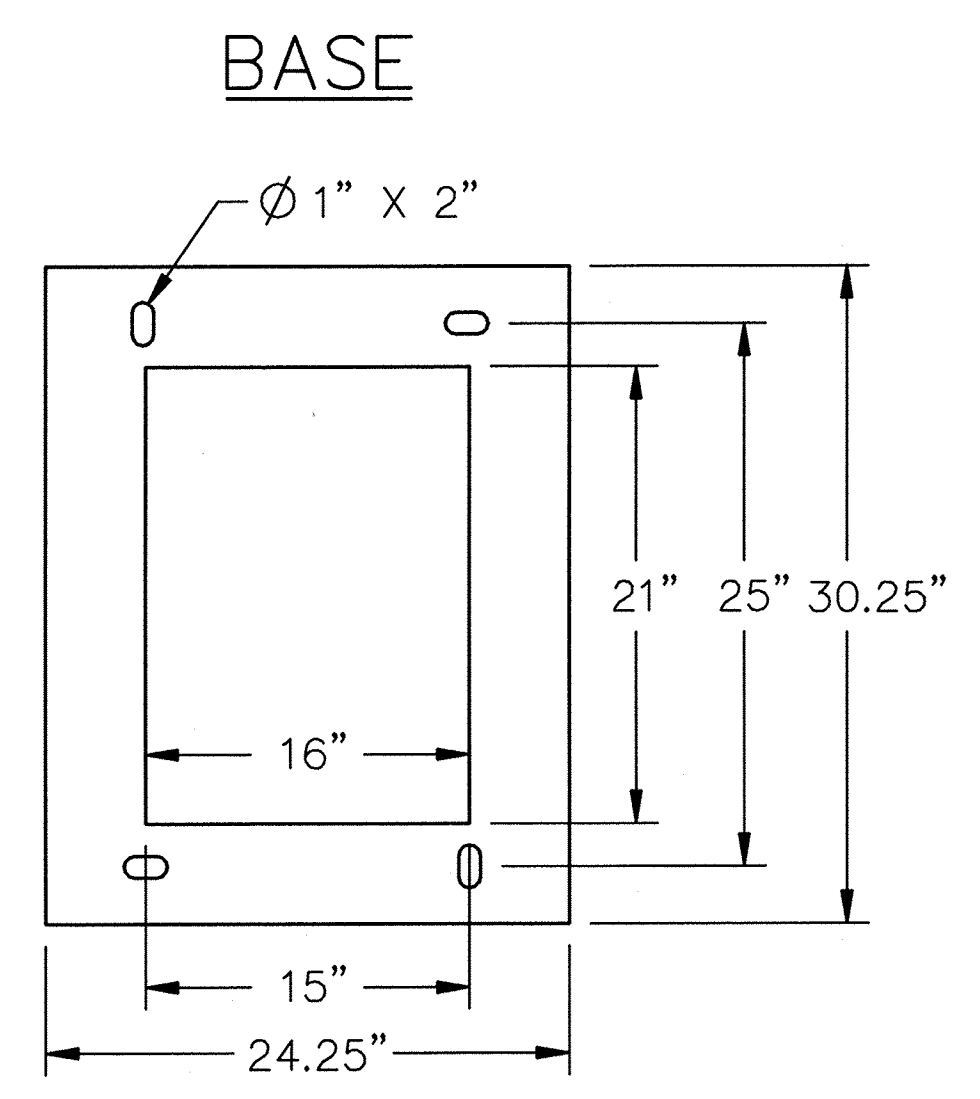
SECTION A-A
TYPICAL CONTROL BASE
TYPE I



SECTION A-A
TYPICAL CONTROL BASE
TYPE II



CABINET BOLT DETAIL



REVISION	BY	DATE

Kent W. Kuff
CITY ENGINEER

Kent W. Kuff
CITY TRAFFIC ENGINEER

CITY OF TULSA, OKLAHOMA
ENGINEERING SERVICES DEPARTMENT

332 CONTROLLER CABINET DETAIL

DATE: OCTOBER 2013

STD. 610A