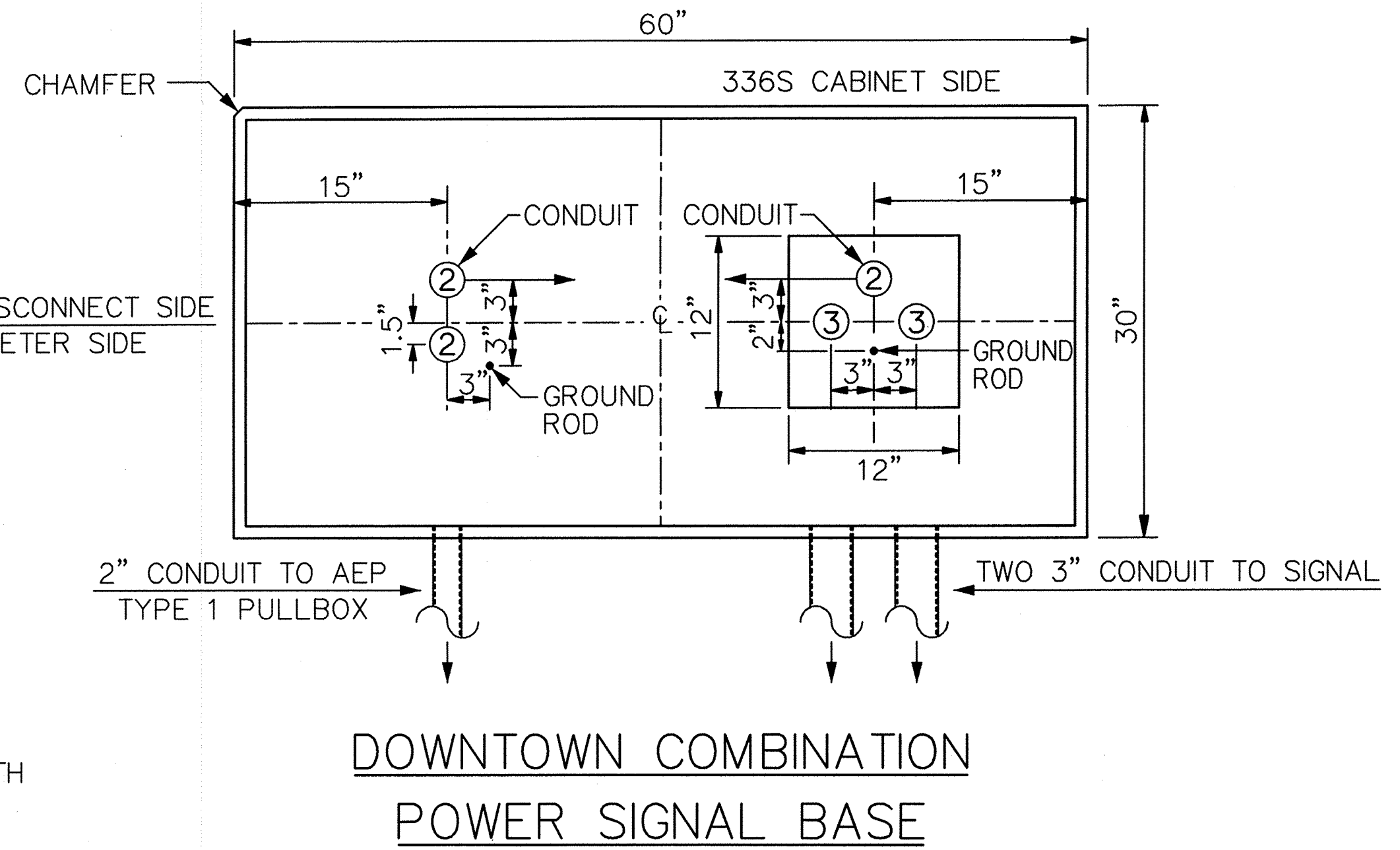
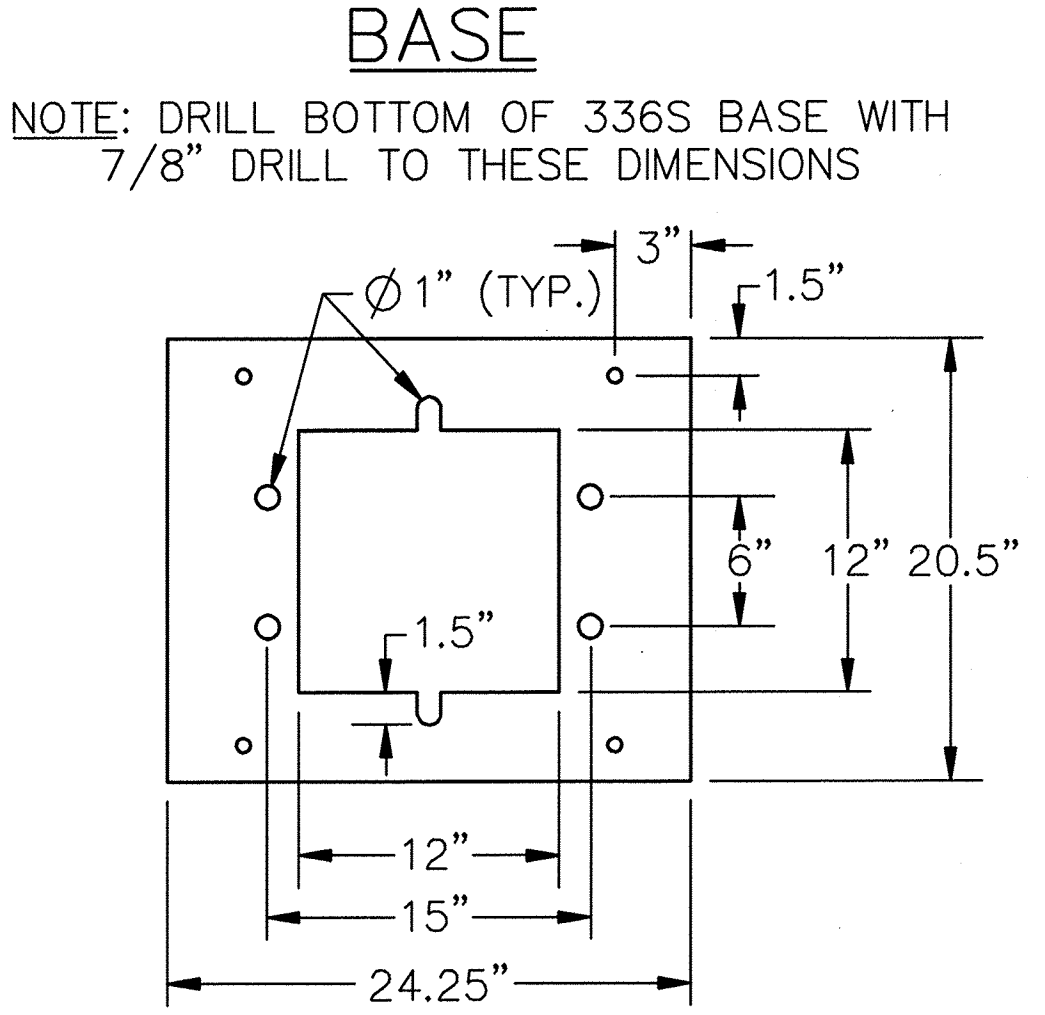
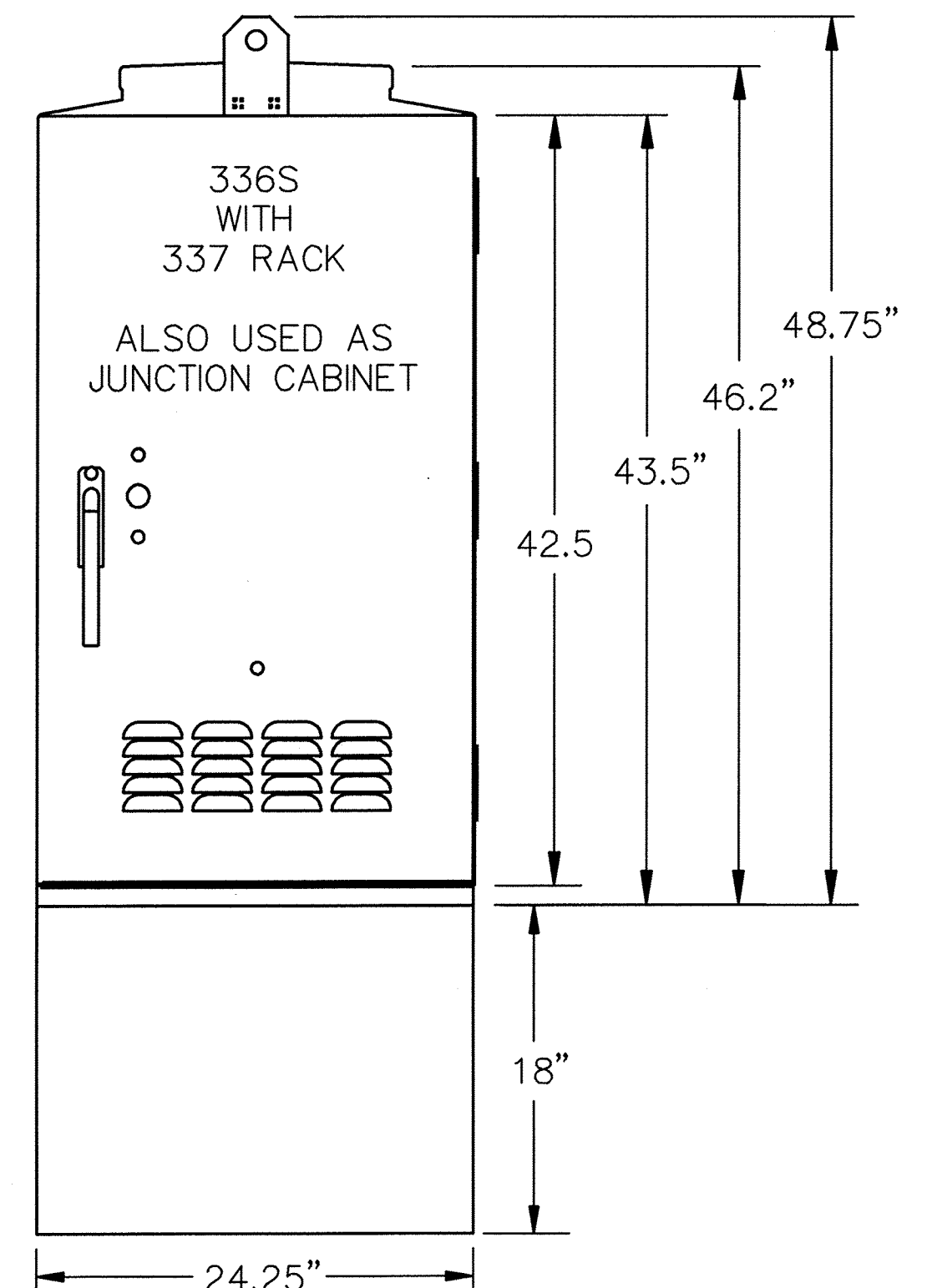
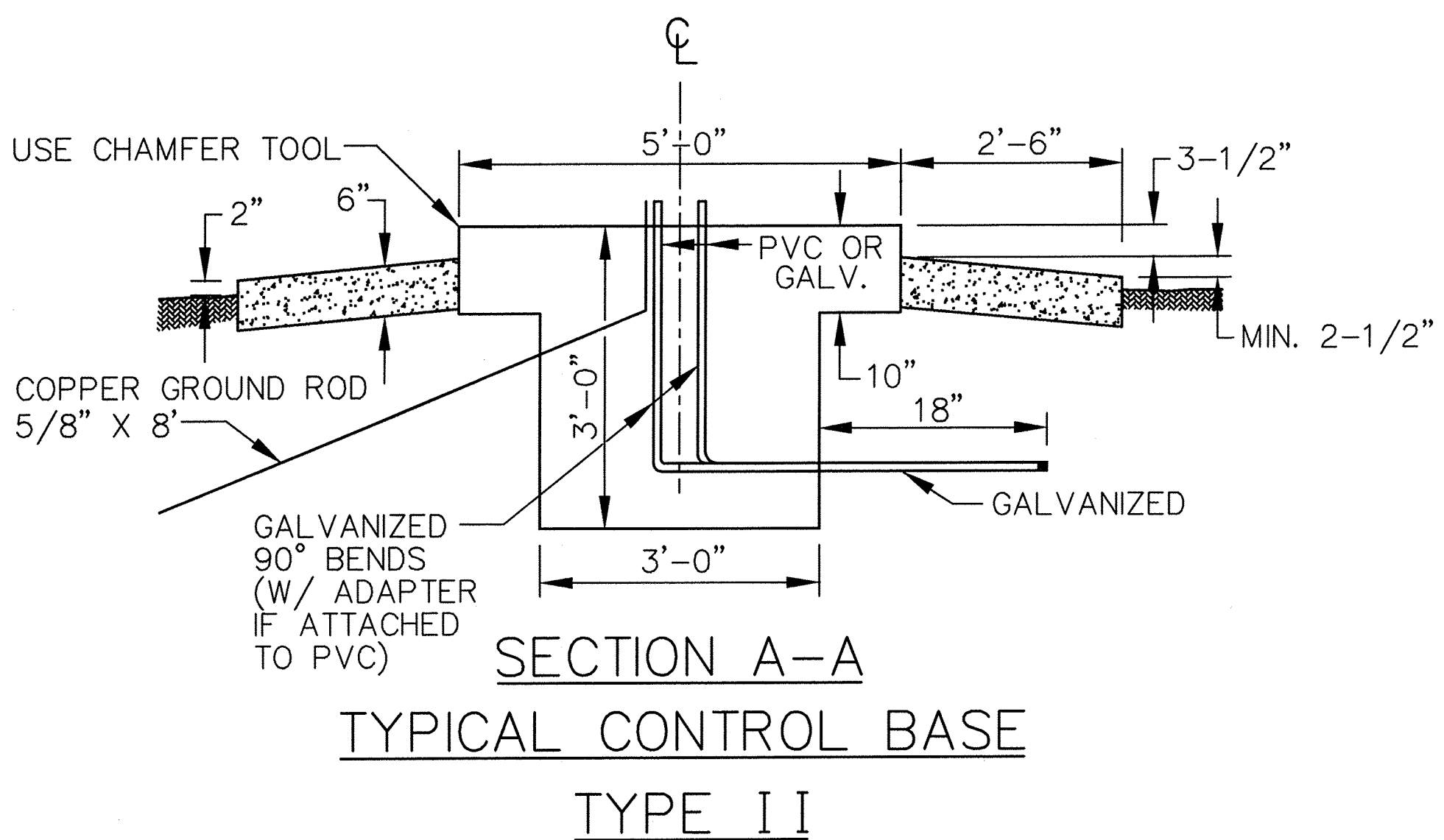
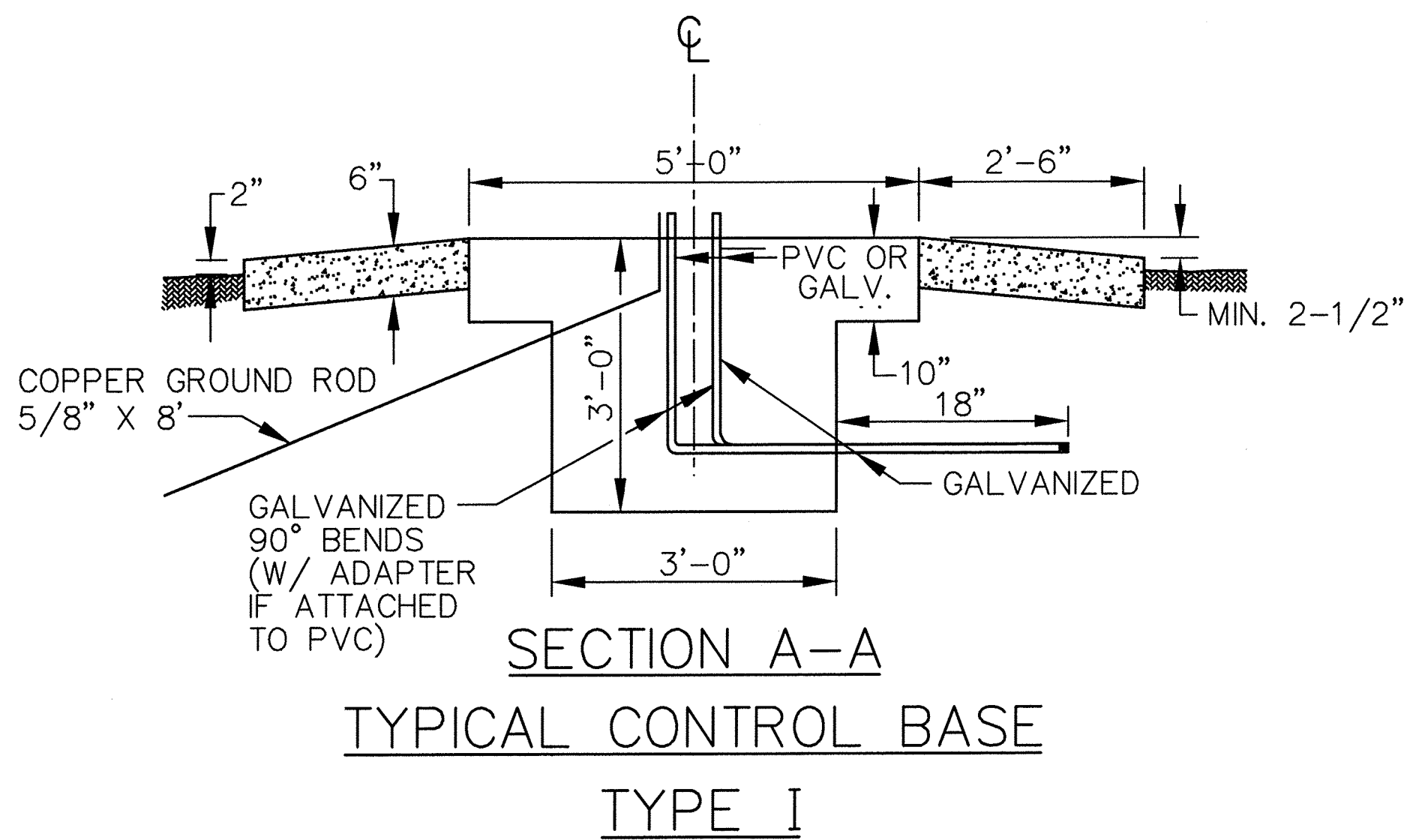


- NOTE:**
1. ALL MEASUREMENTS ARE FROM FINISH GRADE.
 2. ALL CONDUIT TO BE SPECIFIED BY ENG. PLANS.
 3. CONDUIT CLUSTER AT THE CENTER OF THE CONCRETE PAD SHALL BE THE HIGH POINT OF THE PAD TO PREVENT WATER FROM POOLING ON THE PAD.



REVISION	BY	DATE

Shelley
CITY ENGINEER

Kevin W. East
CITY TRAFFIC ENGINEER

CITY OF TULSA, OKLAHOMA
ENGINEERING SERVICES DEPARTMENT

336S CONTROLLER CABINET DETAIL

DATE: OCTOBER 2013

STD. 610B

PATH NAME: /E1/PARTS/STD/DGN_STD/610B-ctrl-cbnt-det_336S.dgn SBW 09/14/2012