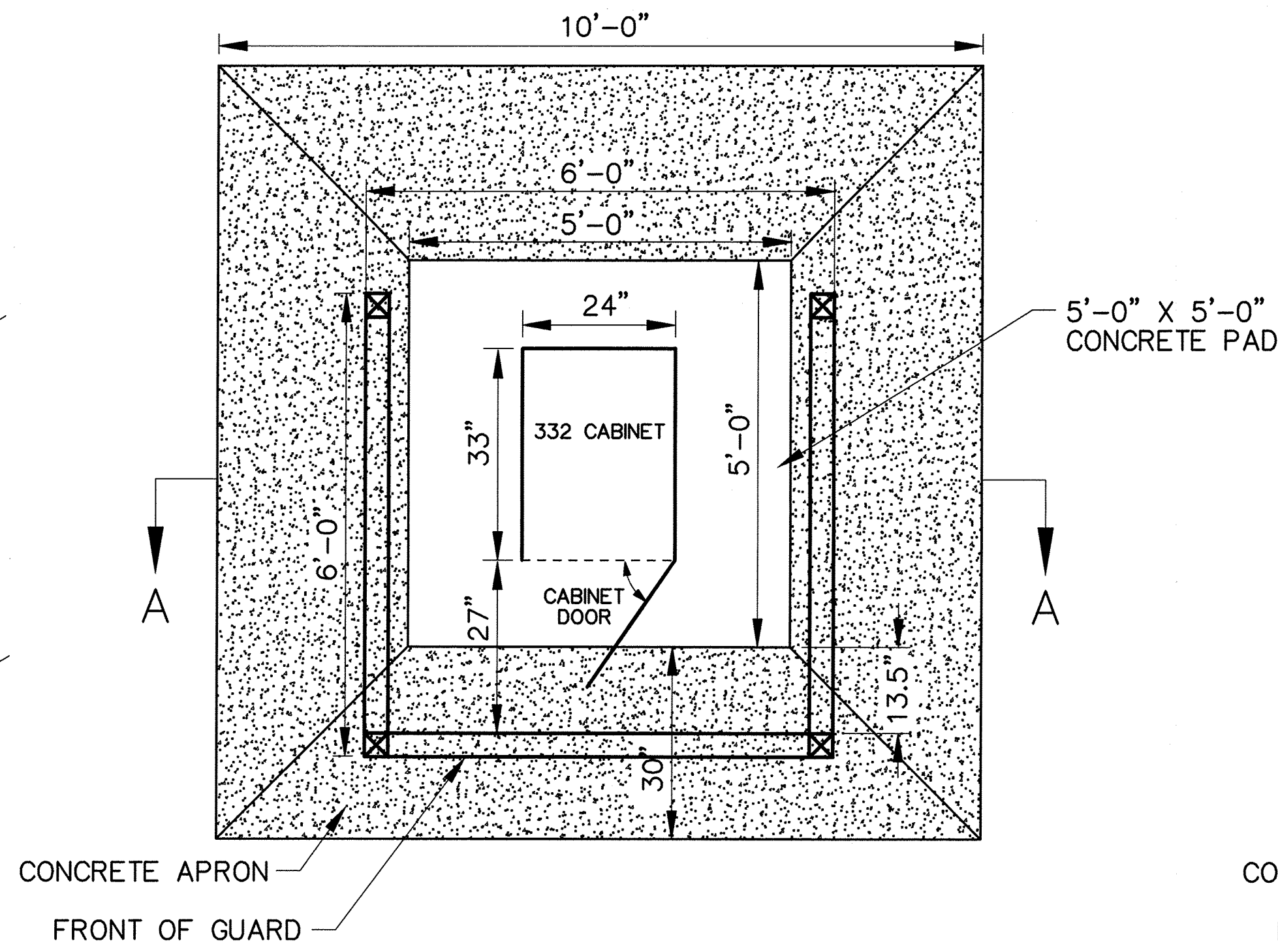
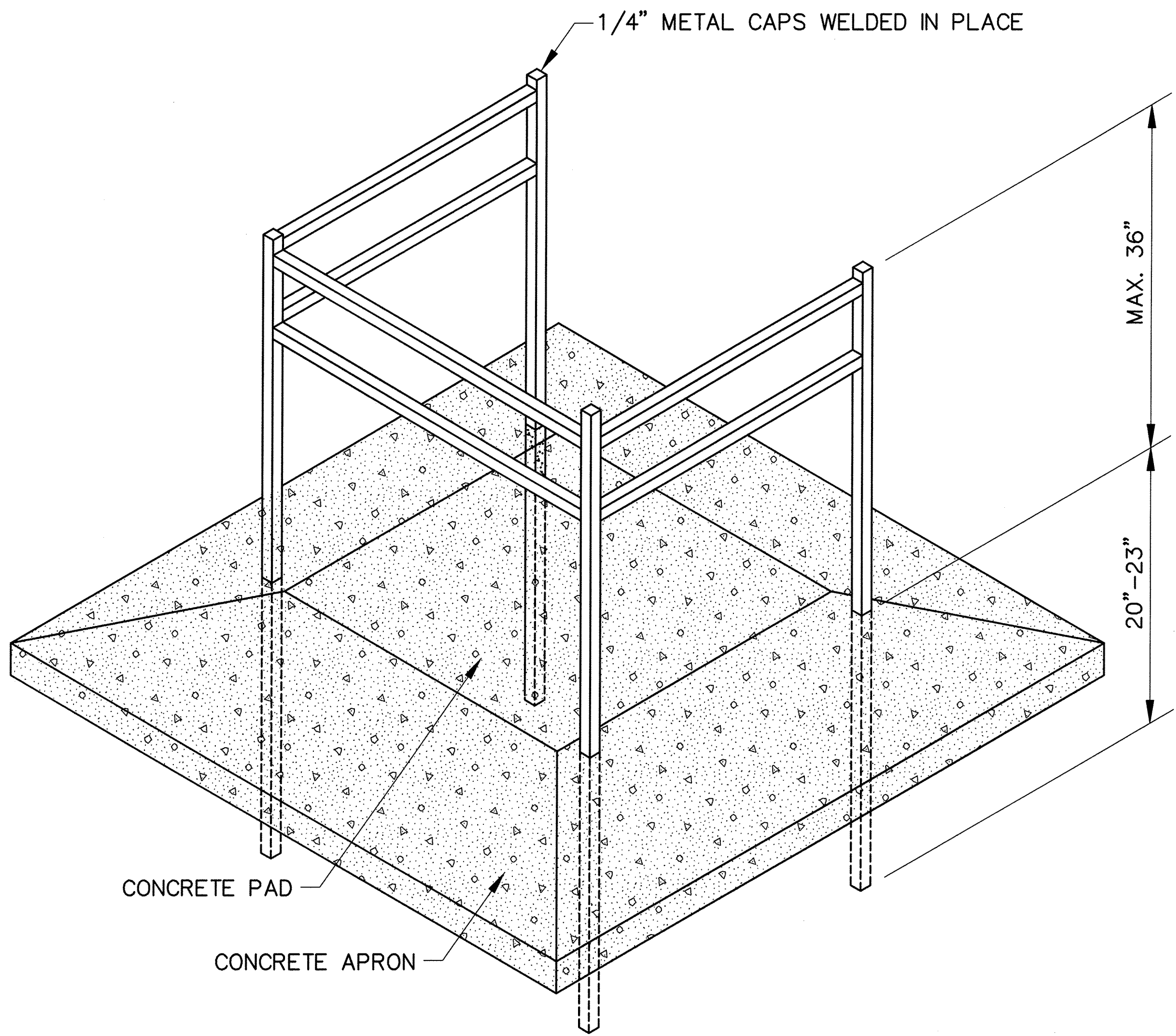
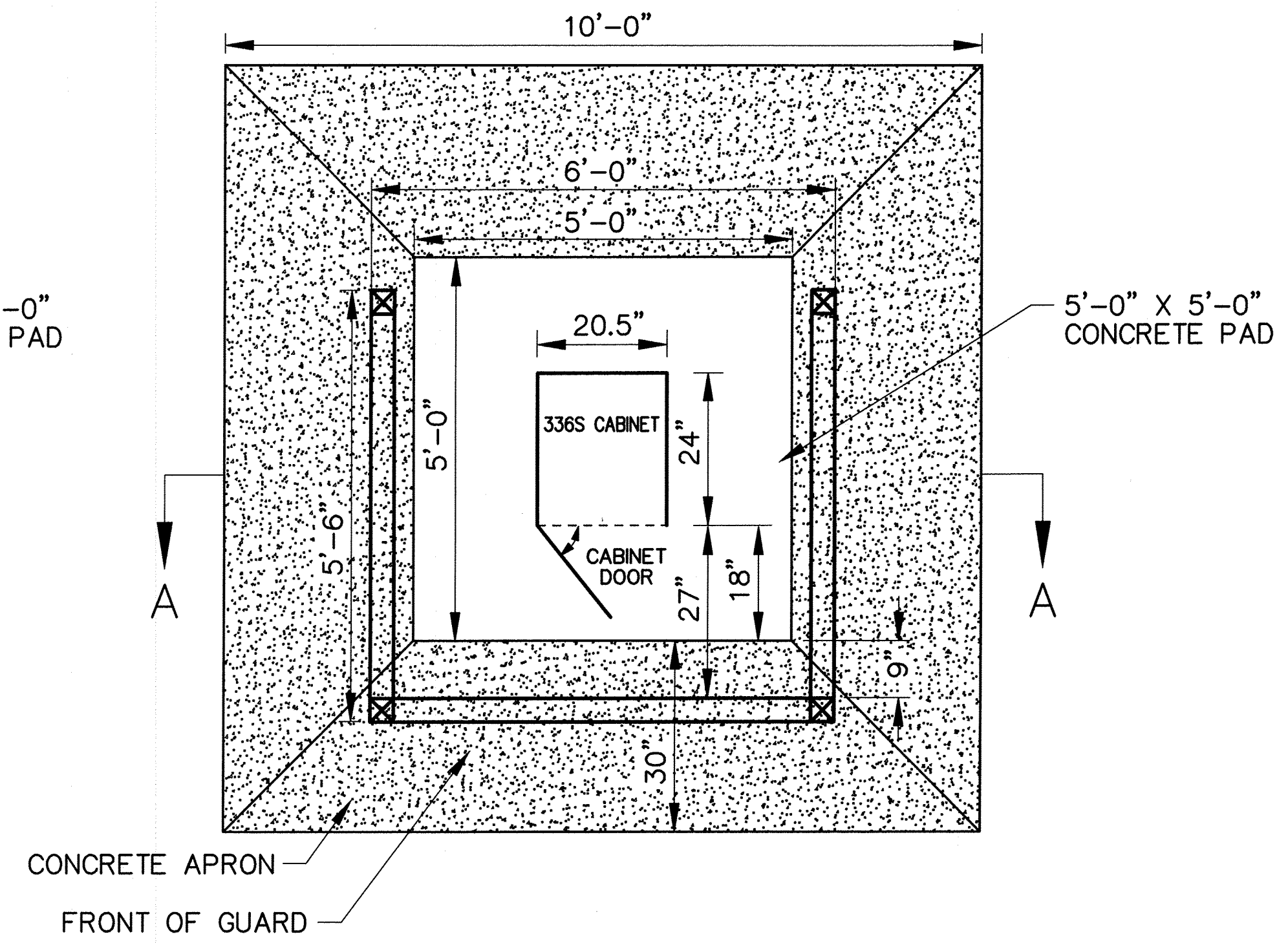


PATH NAME: /E1/PARTS/STD/DGN\_STDS/612\_cbnl-grd-det.dgn SBW 09/14/2012



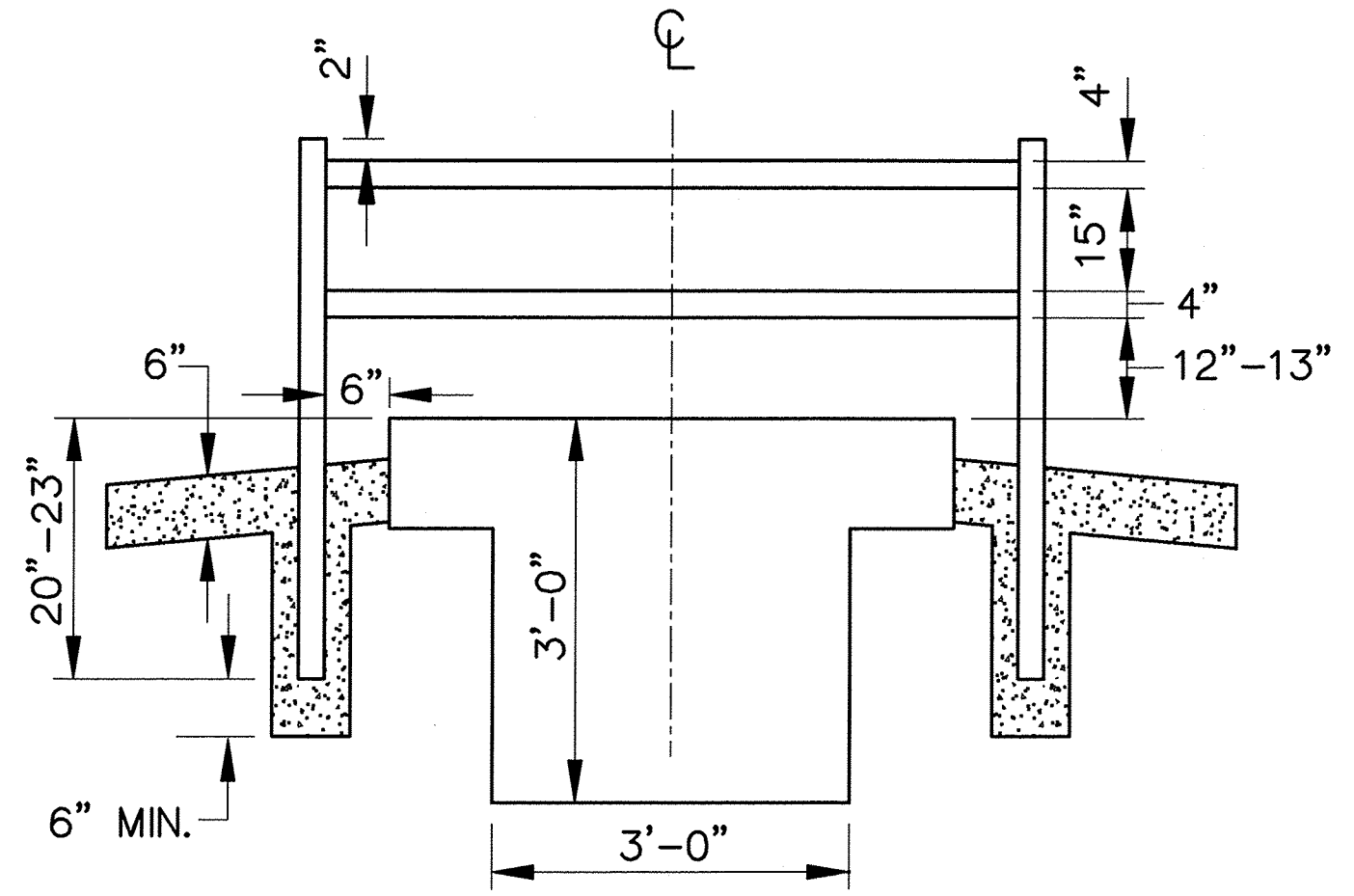
PLACEMENT TOP VIEW - 332 CABINET GUARD



PLACEMENT TOP VIEW - 336S CABINET GUARD

**NOTE:**

1. TOLERANCE OF CABINET GUARD SHALL BE 1/4" MEASURED FROM DIAGONAL. HORIZONTAL NUMBERS SHALL BE PLUMB AND LEVEL. GUARD SHALL BE CENTERED AROUND CONTROLLER BASE.
  - \*2. LOCATION AND ORIENTATION OF CABINET AND CABINET GUARD TO BE APPROVED BY THE TRAFFIC ENGINEER PRIOR TO INSTALLATION.
- \*INSPECTION POINTS REQUIRED BY TRAFFIC OPERATIONS PERSONNEL.



SECTION A-A  
PLACEMENT FRONT VIEW

REVISION	BY	DATE

*[Signature]*  
CITY ENGINEER

*[Signature]*  
CITY TRAFFIC ENGINEER

CITY OF TULSA, OKLAHOMA  
ENGINEERING SERVICES DEPARTMENT

CABINET GUARD DETAIL

DATE: OCTOBER 2013

STD. 612