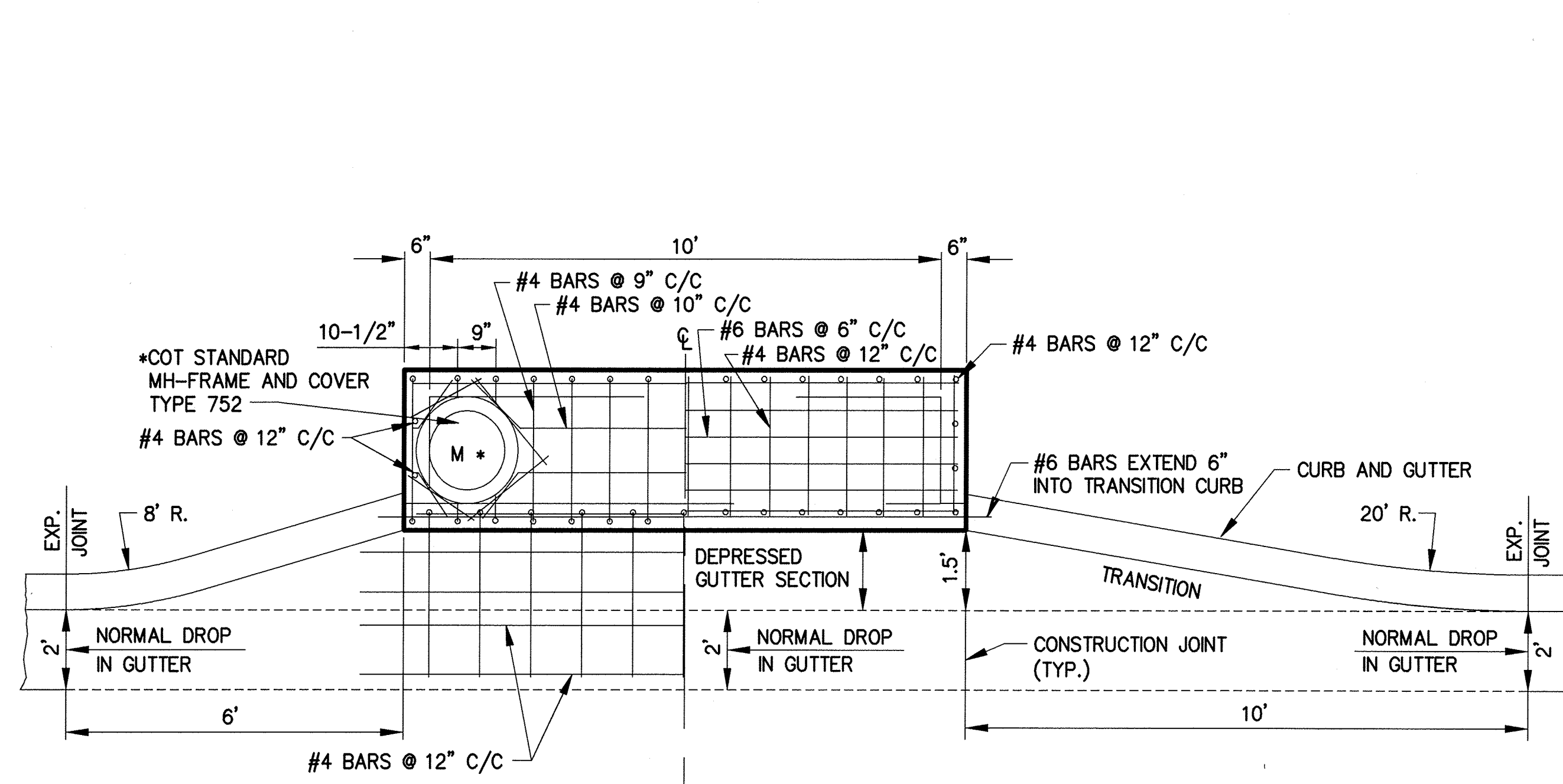
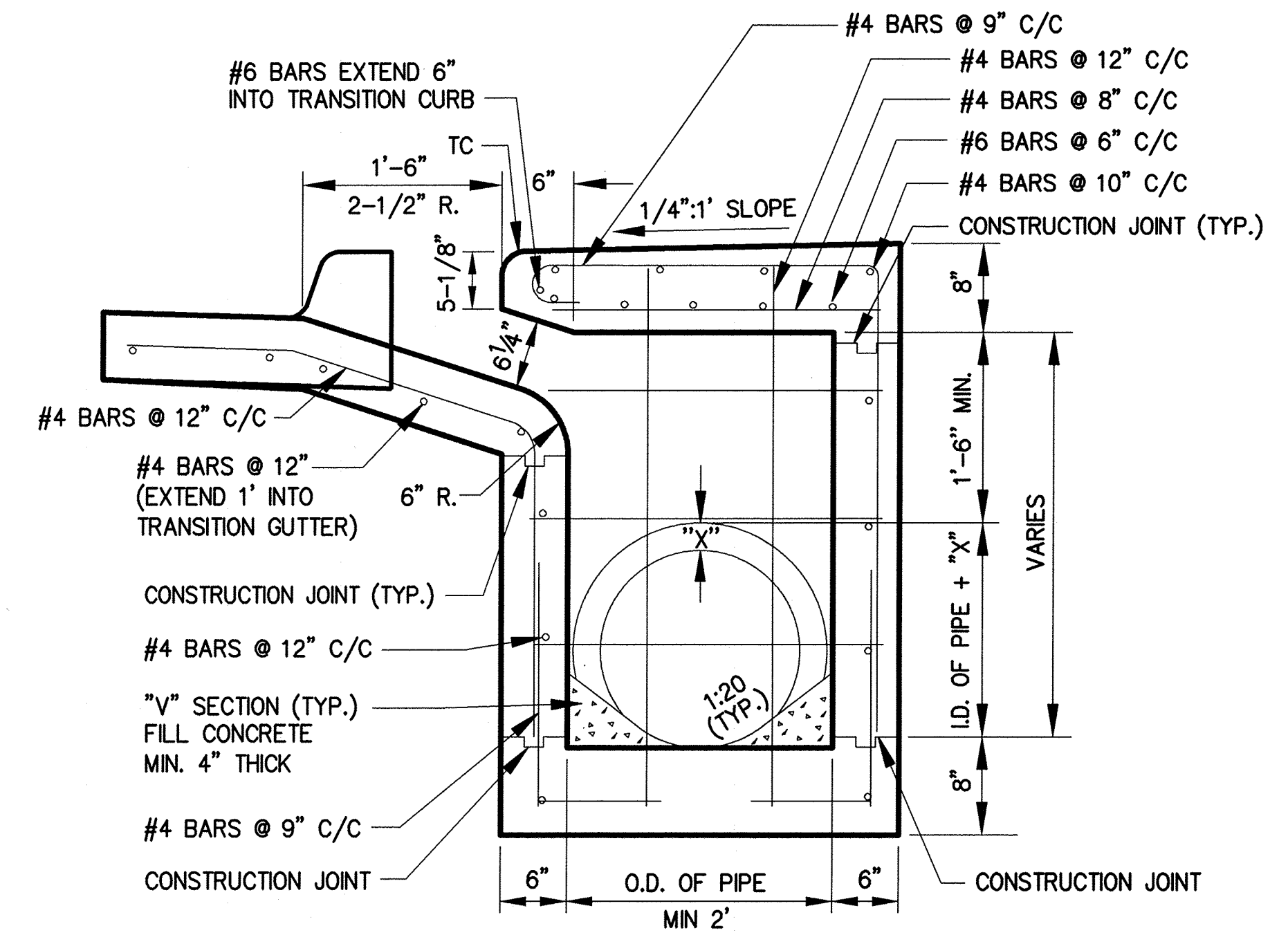


PATH NAME: /E1/PARTS/STD/DGN/STDS/768-STD-RECESSED-CURB-INLET.DGN SBW 12/28/2012



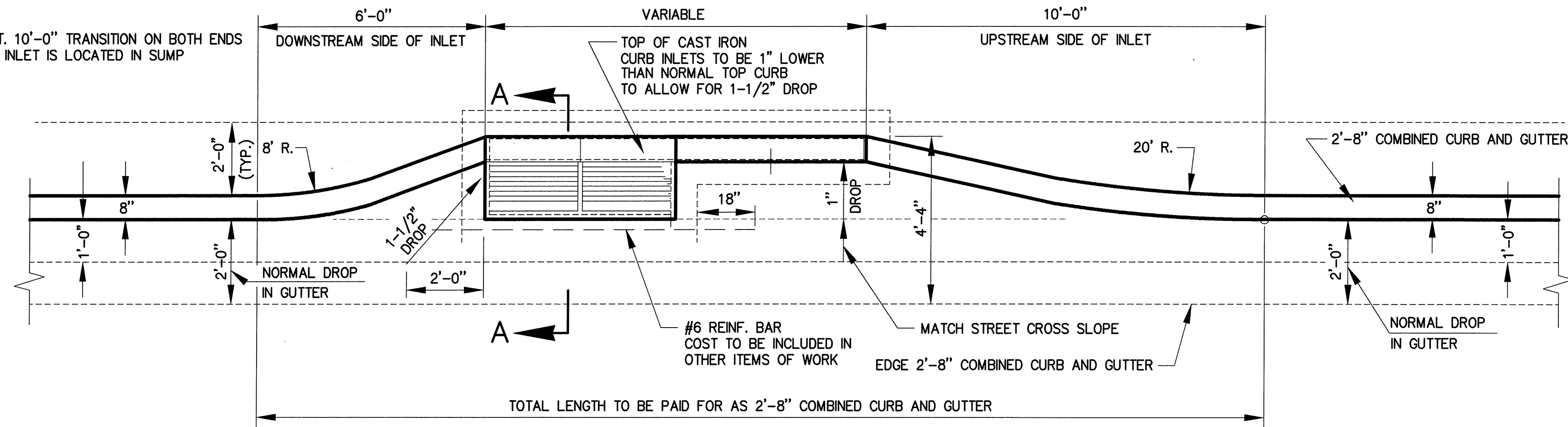
PLAN - SECTION

**RECESSED CURB INLET**



ELEVATION - SECTION A-A

NOTE:  
CONST. 10'-0" TRANSITION ON BOTH ENDS  
WHEN INLET IS LOCATED IN SUMP



**CURB TURNOUT FOR RECESSED CAST IRON CURB INLET**

NOT TO SCALE

NOTE:

1. THE CONTRACTOR MAY PROPOSE ALTERNATE PROCEDURES UNITS. PLANS FOR SUCH PROPOSED ALTERNATES SHALL BE FOR THE CONSTRUCTION OF INLETS, INCLUDING PRECAST SUBMITTED TO THE ENGINEER FOR REVIEW AND APPROVAL BEFORE CONSTRUCTION.
2. REINFORCING STEEL SHALL CONFORM TO STANDARD SPECIFICATIONS FOR "REINFORCING STEEL."
3. INLET WILL BE PAID FOR AS "EACH."

REVISION	BY	DATE

*[Signature]*  
CITY ENGINEER

*[Signature]*  
DESIGN MANAGER

CITY OF TULSA, OKLAHOMA  
ENGINEERING SERVICES DEPARTMENT

STANDARD RECESSED CURB INLET

DATE: OCTOBER 2013

STD. 768