

PUBLIC WORKS
Engineering

DATE:
August 15, 2025

TO:
Plan Holders
Contractors

FROM:
Jenna Richardson
918-596-9637
jennarichardson@cityoftulsa.org

EMAIL TRANSMITTAL

ADDENDUM NO. 5

PROJECT NO. 2036W0001Z, 2036A0024Z & TMUA-W 22-37
ARTERIAL STREET RECONSTRUCTION
GILCREASE MUSEUM RD. (N. 25TH W. AVE.)
W. ADMIRAL BLVD. TO W. PINE ST.

Number of pages: 14

All addenda to the contract documents should be denoted on the
last page of the Proposal in the space provided.

Thank you,
Contract Administration



PUBLIC WORKS
Engineering

DATE:
August 15, 2025

ADDENDUM NO. 5
TO
PROJECT NO. 2036W0001Z, 2036A0024Z & TMUA-W 22-37
ARTERIAL STREET RECONSTRUCTION GILCREASE MUSEUM RD. (N.
25TH W. AVE.) W. ADMIRAL BLVD. TO W. PINE ST.


This Addendum No. 5 consisting of Three (3) items, submitted by Poe and Associates is hereby made a part of the Contract Documents to the same extent as though it were originally included therein and shall supersede anything contained in the Plans and Specifications with which it might conflict. **All addenda to the contract documents should be denoted on the last page of the Proposal in the space provided.**

This Addendum No. 5 consists of the following:

1. The attached documents list the detailed items that have been modified in Addendum No. 5. These documents shall be inclusive and apply to this project.

All other provisions of the Plans and Specifications shall remain in full force and effect.

CITY OF TULSA

FOR

Paul D. Zachary, P.E.
Deputy Director


HAS/DDH/JR/ma

0001 x 0001

0001 x 0001

DATE:
AUGUST 15, 2025

ADDENDUM NO. 5
TO
GILCREASE MUSEUM RD.
(N. 25TH W. AVE.)
W. ADMIRAL BLVD TO W. PINE ST.
PROJECT NOS. 2036W001Z, 2036 A0024Z & TMUA-W 22-37

This Addendum No. 5 consists of three (3) items, submitted by Poe and Associates, Inc., is hereby made a part of the Contract Documents to the same extent as though it was originally included therein and shall supersede anything contained in the Plans and Specifications with which it might conflict.

This Addendum No. 5 consists of the following:

1. Provide revised Electronic Bid Form with revised Quantities.
 - corrected quantities:
 - Bid Item 20, Class A Concrete, Small Structures, to whole number **45 CY**.
 - Bid Item 21, Class A Concrete, to whole number **591 CY**.
 - Bid Items 24, Ground Signs, to **506 SF**.
 - Bid Item 26, 1-3/4" Sign Posts, to **790 LF**.
 - Bid Item 27, 2" Sign Posts, to **252 LF**.
 - Bid Item 53, Tactile Warning Device, to **453 SF**.
 - Bid Item 100, Concrete Gate Columns, Complete, in Place, to **6 EA**.
 - Bid Item 104, TRAFFIC STRIPE(4") (THERMOPLASTIC), to **28,192 LF**.
 - Bid Item 105, TRAFFIC STRIPE(12") (THERMOPLASTIC), to **20 LF**.
 - Bid Item 106, TRAFFIC STRIPE(24") (THERMOPLASTIC), to **1,238 LF**.
 - Bid Item 107, TRAFFIC STRIPE(THERMOPLASTIC)(SYMBOLS, WORDS, ETC), to **27 EA**.
 - Bid Item 108, TRAFFIC STRIPE(THERMOPLASTIC)(SOLID GREEN FILL), to **30 SF**.
 - Bid Item 214, 24" REINFORCED CONCRETE PIPE (RCP), COMPLETE IN PLACE, to **33 LF**.

2. Replace Plan Sheets:

- No. 2 with revised Quantity Table:
 - Revised Quantity of Pay Item 24 from 494 SF to 506 SF.
 - Revised Quantity of Pay Item 26 from 769 LF to 790 LF.
 - Revised Quantity of Pay Item 27 from 246 LF to 252 LF.
 - Revised Quantity of Pay Item 100 from 4 EA to 6 EA.
 - Revised Quantity of Pay Item 104 from 25,966 LF to 28,192 LF.
 - Revised Quantity of Pay Item 105 from 100 LF to 20 LF.
 - Revised Quantity of Pay Item 106 from 1,072 LF to 1,238 LF.
 - Revised Quantity of Pay Item 107 from 25 EA to 27 EA.
 - Revised Quantity of Pay Item 108 from 150 SF to 30 SF.
 - Revised Quantity of Pay Item 214 from 42 LF to 33 LF.
- No. 6 with revised Quantity Table:
 - Deleted reference to Note COT 617 from Pay Items 162 & 163.
 - Deleted Note COT 617.
- No. 62 with revised underlying Aerial Photo location and note that the heavy forest Clearing for the stormwater diversion berm is 0.5 acres.

3. Attached Clarifications summarizing submitted questions.

All other provisions of the Plans and Specifications shall remain in full force and effect.

Poe and Associates, Inc.



Jared T. Bates, P.E.
Project Manager

CLARIFICATIONS

1. Special Provision

Delete the Special Provision for Utility Relocations and Design Issues, sheet URDI-1.

2. Service Detail Sheet 116A

The electric utility will provide and install the utility transformer for this project.

3. CONCRETE GATE COLUMNS, COMPLETE, IN PLACE

Quantity is increased from 4 EA to 6 EA. The two additional Columns will be constructed on the south side of West Newton Street, west of the proposed driveway gate, in the Ameristar fence line for the Temple property at approximately stations 28+06, 30 RT and 27+10, 30 RT. No gates will be attached to the two new columns. Form Patterns, Colors, and Staining will be the same as the other columns.

SUMMARY OF PAVING & DRAINAGE QUANTITIES

ITEM	SPEC. NO.	DESCRIPTION	PAY ITEM NOTES										UNIT	QUA		
1	20(A)	CLEARING AND GRUBBING	E-1	E-2											LS	
2	202(A)	UNCLASSIFIED EXCAVATION	E-3	E-4	R-1										CY	
3	202(C)	ROCK EXCAVATION	R-1												CY	
4	205(A)	TYPE A-SALVAGED TOPSOIL													CY	
5	220	SWPPP DOCUMENTATION AND MANAGEMENT	E-6	E-7	E-8	E-9									LS	
6	230(A)	SOLID SLAB SODDING	E-10	E-11											SY	
7	303(A)	AGGREGATE BASE, TYPE A	E-5	S-1	S-2										CY	
8	310(B)	SUBGRADE, METHOD B	E-5												SY	
9	325	SEPARATOR FABRIC	E-5	S-3											SY	
10	409	FABRIC REINFORCEMENT (MIRAFI PGM-G4)	S-4												SY	
11	411(C)	SUPERPAVE, TYPE S4 (PG 70-28 OK) INSOLUBLE	S-5	S-6	S-7	S-8									TON	
12	411(E)	SUPERPAVE, TYPE S6(PG 70-28 OK)	S-5	S-6	S-7	S-8	G-1								TON	
13	412	COLD MILLING PAVEMENT	S-9												SY	
14	414(B)	DOWEL JOINTED P.C.C. PAVT. (PLACEMENT)	S-10	S-11	SP-1	S-18									SY	
15	414(B)	DOWEL JOINTED P.C.C. PAVT. W/ INT. CLR. & BRICK STAMP (PLACEMENT)	S-10	S-11	SP-1	S-18									SY	
16	414(G)	P.C. CONCRETE PAVEMENT	S-10	S-11	S-12	S-13	SP-1								CY	
17	414(G)	P.C. CONCRETE PAVEMENT W/ INT. CLR. & BRICK STAMP (9')	S-10	S-11	S-12	S-13	SP-1	S-18							CY	
18	501(A)	STRUCTURAL EXCAVATION UNCLASSIFIED													CY	
19	509(A)	CLASS AA CONCRETE													CY	
20	509(C)	CLASS A CONCRETE, SMALL STRUCTURES	S-12												CY	
21	509(C)	CLASS A CONCRETE	S-12	S-13											CY	
22	509(C)	CLASS C CONCRETE	S-12												CY	
23	511(A)	REINFORCING STEEL													LB	
24	COT 608	GROUND SIGN													SF	
25	COT 608	1-1/2" SIGN POST													LF	
26	COT 608	1-3/4" SIGN POST													LF	
27	COT 608	2" SIGN POST													LF	
28	609(B)	1'-6" COMBINED CURB AND GUTTER (8" BARRIER)	S-15												LF	
29	610(A)	4" CONCRETE SIDEWALK	S-12	S-13	S-16	S-17									SY	
30	610(A)	4" CONCRETE SIDEWALK W/ INT. CLR. & BRICK STAMP	S-12	S-13	S-16	S-17	S-18								SY	
31	610(B)	6" CONCRETE SIDEWALK (ADA RAMPS AND TRAIL)	S-12	S-13	S-16	S-17									SY	
32	610(B)	6" CONCRETE DRIVEWAY (H.E.S.)	S-12	S-13	S-16	S-17									SY	
33	610(I)	TACTILE WARNING DEVICE													SF	
34	611(A)	4' MANHOLE, COMPLETE IN PLACE (STORM)	D-4	D-2	D-3	D-4	D-5								EA	
35	611(A)	5' MANHOLE, COMPLETE IN PLACE (STORM)	D-1	D-2	D-3	D-4	D-5								EA	
36	611(A)	6' MANHOLE, COMPLETE IN PLACE (STORM)	D-1	D-2	D-3	D-4	D-5								EA	
37	611(A)	8' MANHOLE, COMPLETE IN PLACE (STORM)	D-1	D-2	D-3	D-4	D-5								EA	
38	611(B)	ADDITIONAL DEPTH IN (4' I.D.) MANHOLE (STORM SEWER)	D-4												VF	
39	611(B)	ADDITIONAL DEPTH IN (5' I.D.) MANHOLE (STORM SEWER)	D-4												VF	
40	611(B)	ADDITIONAL DEPTH IN (6' I.D.) MANHOLE (STORM SEWER)	D-4												VF	
41	611(B)	ADDITIONAL DEPTH IN (8' I.D.) MANHOLE (STORM SEWER)	D-4												VF	
42	611(G)	INLET, RCI DESIGN 1048 W/AMH, COMPLETE IN PLACE	D-1	D-2	D-3	D-7	D-8	D-9	D-10						EA	
43	611(G)	INLET, RCI DESIGN 1096 W/AMH, COMPLETE IN PLACE	D-1	D-2	D-3	D-7	D-8	D-9	D-10						EA	
44	611(G)	INLET SMD DESIGN 1, COMPLETE IN PLACE	D-2	D-3	D-7	D-8	D-9	D-10							EA	
45	611(G)	INLET SMD DESIGN 2A, COMPLETE IN PLACE	D-2	D-3	D-7	D-8	D-9	D-10							EA	
46	611(G)	INLET SMD DESIGN 2B, COMPLETE IN PLACE	D-2	D-3	D-7	D-8	D-9	D-10							EA	
47	611(G)	INLET CICI DESIGN 2(A), COMPLETE IN PLACE	D-2	D-3	D-7	D-8	D-9	D-10	D-11						EA	
48	611(G)	INLET CICI DESIGN 2(D), COMPLETE IN PLACE	D-2	D-3	D-7	D-8	D-9	D-10	D-11						EA	
49	611(G)	INLET CICI DESIGN 4(B), COMPLETE IN PLACE	D-2	D-3	D-7	D-8	D-9	D-10	D-11						EA	
50	611(G)	INLET CICI DESIGN 4(D), COMPLETE IN PLACE	D-2	D-3	D-7	D-8	D-9	D-10	D-11						EA	
51	611(G)	INLET CICI DESIGN 2(A) WITH ACCESS MANHOLE, COMPLETE IN PLACE	D-1	D-2	D-3	D-7	D-8	D-9	D-10	D-11					EA	
52	611(G)	INLET CDI 42" DESIGN NO.5	D-2	D-3	D-7	D-8	D-9	D-10							EA	
53	611(G)	INLET CDI 48" DESIGN NO.6	D-2	D-3	D-7	D-8	D-9	D-10							EA	
54	611(G)	INLET TYPE 1 GPI	D-2	D-3	D-7	D-8	D-9	D-10							EA	
55	611(H)	ADDITIONAL DEPTH IN RCI 1048 W/ MANHOLE	D-10												VF	
56	611(H)	ADDITIONAL DEPTH IN RCI 1096 W/ MANHOLE	D-10												VF	
57	611(H)	ADDITIONAL DEPTH IN CICI DESIGN 2	D-10												VF	
58	611(H)	ADDITIONAL DEPTH IN CICI DESIGN 4	D-10												VF	
59	611(H)	ADDITIONAL DEPTH IN CICI DESIGN 2A WITH ACCESS MANHOLE	D-10												VF	
60	611(L)	JUNCTION BOX, COMPLETE IN PLACE	D-1	D-2	D-3										CF	
61	612(C)	INLET ADJUSTED TO GRADE WITH TYPE C GRATES	S-12	R-2	D-2	D-6	D-7	D-9							EA	
62	612(E)	VALVE BOX ADJUSTED TO GRADE	S-12	R-2	D-6										EA	
63	613(A)	54" REINFORCED CONCRETE PIPE (RCP), COMPLETE IN PLACE	D-8	D-12	D-13										LF	
64	613(E)	18" CORRUGATED POLYPROPYLENE PIPE (CPP), COMPLETE IN PLACE	D-8	D-12	D-13	D-14	D-15								LF	
65	613(E)	24" CORRUGATED POLYPROPYLENE PIPE (CPP), COMPLETE IN PLACE	D-8	D-12	D-13	D-14	D-15								LF	
66	613(E)	30" CORRUGATED POLYPROPYLENE PIPE (CPP), COMPLETE IN PLACE	D-8	D-12	D-13	D-14	D-15								LF	
67	613(E)	36" CORRUGATED POLYPROPYLENE PIPE (CPP), COMPLETE IN PLACE	D-8	D-12	D-13	D-14	D-15								LF	
68	613(E)	42" CORRUGATED POLYPROPYLENE PIPE (CPP), COMPLETE IN PLACE	D-8	D-12	D-13	D-14	D-15								LF	
69	613(E)	48" CORRUGATED POLYPROPYLENE PIPE (CPP), COMPLETE IN PLACE	D-8	D-12	D-13	D-14	D-15								LF	
70	613(E)	60" CORRUGATED POLYPROPYLENE PIPE (CPP), COMPLETE IN PLACE	D-8	D-12	D-13	D-14	D-15								LF	

Jan 2013
LICENSED

TRAFFIC OPERATIONS GENERAL CONSTRUCTION NOTES

- (A) THE CONTRACTOR SHALL BE RESPONSIBLE FOR MAINTAINING THE TRAFFIC SIGNAL IN A PROPER WORKING CONDITION DURING CONSTRUCTION AS DIRECTED BY THE TRAFFIC ENGINEER AND FOR FOLLOWING THE REQUIREMENTS OF THE COT SPEC 628 - TRAFFIC SIGNAL CONSTRUCTION AND OPERATION. ALL TRAFFIC MATERIALS SHALL MEET THE REQUIREMENTS OF COT SPEC 627 - PRE-QUALIFICATION FOR TRAFFIC OPERATIONS MATERIALS OR AS DIRECTED BY THE TRAFFIC ENGINEER. CONTRACTORS SHALL MEET THE REQUIREMENTS OF COT SPEC 628 - SIGNAL AND LIGHTING PROJECT CONTRACTOR EXPERIENCE REQUIRED.
- (B) THE CONTRACTOR SHALL OBTAIN THE NECESSARY PERMISSION FOR ELECTRICAL INSPECTION ON ALL SIGNAL AND LIGHTING WORK PER COT SPEC 628 - TRAFFIC SIGNAL CONSTRUCTION AND OPERATION.
- (C) ALL TRAFFIC MATERIALS REMOVED SHALL BE HANDLED PER COT SPEC 625 - REMOVAL OF TRAFFIC ITEMS.
- (D) THIS PROJECT HAS BEEN DESIGNED AND IS TO BE CONSTRUCTED ACCORDING TO THE REQUIREMENTS OF THE 2022 VERSION OF THE CITY OF TULSA TRAFFIC OPERATIONS STANDARDS AND SPECIFICATIONS.

TRAFFIC OPERATIONS PAY ITEM NOTES

- COT 602** ALL CONDUIT ENDS SHALL BE REAMED AND BUSHINGS SHALL BE INSTALLED PRIOR TO PULLING ANY WIRES.
- COT 603** POLE FOUNDATIONS SHALL BE CONSTRUCTED ACCORDING TO THE APPLICABLE REQUIREMENTS OF ODOT STANDARD SPECIFICATIONS FOR DRILLED SHAFT FOUNDATIONS AS DIRECTED BY THE TRAFFIC ENGINEER.
- COT 610** THE CABINET PROVIDED SHALL BE A STRETCH CABINET MEETING THE CABINET AND DOOR HEIGHT SPECIFICATIONS OF A MCCAIN 332S CABINET. ALL OTHER DIMENSIONS SHALL MEET CURRENT COT STANDARDS AND SPECIFICATIONS
- THE TRAFFIC SIGNAL CONTROLLER PROVIDED SHALL BE AN ECONOLITE RACK MOUNT COBALT CONTROLLER IN A 332 SIGNAL CABINET OR 332S WHERE A BATTERY BACKUP IS INCLUDED. TRAFFIC SIGNAL CABINETS SHALL BE A 332S EXT RACK PER THE 2025SPEC. THE SIDES OF THE CONTROLLER CABINET SHALL BE PARALLEL TO THE STREETS. THE FRONT DOOR OF THE CABINET SHALL FACE AWAY FROM THE INTERSECTION. THE DOOR HINGES SHALL BE LOCATED ON THE SIDES OF THE CABINET FURTHEST AWAY FROM THE INTERSECTION, SO THE DOORS SWING OPEN AWAY FROM THE INTERSECTION.
- CONFLICT MONITOR SHALL BE AN EDI 2018ECLIP OR APPROVED EQUAL. AN ETHERNET PORT SHALL BE PROVIDED ON THE FRONT PANEL. THE ETHERNET PORT SHALL BE ELECTRICALLY ISOLATED FROM THE MMU ELECTRONICS AND SHALL PROVIDE MINIMUM OF 1500 VRMS ISOLATION. THE CONNECTER SHALL BE AN RJ-45 EIGHT PIN CONNECTOR. AN HTML BASED CAPABILITY SHALL BE PROVIDED IN THE MONITOR TO CONFIGURE THE NETWORK PARAMETERS OF THE MMU ETHERNET PORT USING A STANDARD HTML BROWSER. ALL DISPLAY INDICATORS SHALL BE MOUNTED ON THE FRONT PANEL OF THE SIGNAL MONITOR AND SHALL BE WATER CLEAR, T-1 PACKAGE, SUPER BRIGHT TYPE LEDS. ALL FAULT LEDS SHALL BE RED EXCEPT THE PWR INDICATOR WHICH SHALL BE GREEN. A SEPARATE RED, YELLOW AND GREEN INDICATOR SHALL BE PROVIDED FOR EACH CHANNEL.
- INCLUDE 2-19" RACK SHELVES, THAT ARE CHATSWORTH PRODUCTS PART NUMBER 10758-701 OR APPROVED EQUAL, IN ADDITION TO WHAT IS OUTLINED IN COT 610 SPECIFICATION. RACKS SHALL BE DESIGNED TO HOLD SMALL PERIPHERAL EQUIPMENT IN A CENTRAL LOCATION. EACH SHELF TYPICALLY HOLDS TWO UNITS AND ALLOWS A CONVENIENT CABLE RUN DOWN THE INSIDE OF THE RACK CHANNEL. RACK SHALL HOLD EQUIPMENT UP TO 17.35"W X 9.82"D AND MADE OF STRONG, LIGHTWEIGHT ALUMINUM THAT CAN SUPPORT UP TO 50 LB.
- THE CONTROLLER CABINET DOORS SHALL BE EQUIPPED WITH A CL-TC1 GEN 2 CYBERLOCK CYLINDER AND EITHER A15481RS CCL TRAFFIC CABINET LOCK RH, OR A15481LS CCL TRAFFIC CABINET LOCK LH. THE CONTRACTOR WILL BE REQUIRED TO PURCHASE A CYBERKEY BLUE 3 THAT SHALL BE PROGRAMMED BY TRAFFIC OPERATIONS AT 4015 N HARVARD AVE, TULSA, OK 74115.
- THE BATTERY BACKUP SYSTEM SHALL BE ECONOLITE ZX2000-48 SUPER CAPACITOR BATTERY MODULES AND DBLMXU-48 SERIES DOUBLE CONVERSION UPS.
- THE CONTRACTOR SHALL DELIVER THE SIGNAL CABINET FULLY WIRED AND READY FOR INSTALLATION TO THE COT TRAFFIC OPERATIONS DIVISION FOR INSPECTION AND APPROVAL PRIOR TO INSTALLATION. COT WILL NOTIFY THE

CONTRACTOR OF ANY DEFICIENCIES PER COT SPECIFICATIONS. CABINET ASSEMBLIES.

COT 613 THE AUDIBLE PUSH BUTTON SHELF MOUNT CONTROL UNITS SHALL BE INSTALLED IN ACCORDANCE WITH ALL REQUIREMENTS, AND WITH ALL WEATHER SURFACING MATERIALS MOUNTED 42 INCHES ABOVE THE CORRESPONDING CROSSWALK. IF NEEDED, THE EXTENDER ARM SHALL BE USED. ALL PUSH BUTTONS ARE LOCATED AT THE CORRESPONDING CROSSWALK. ALL MESSAGES SHALL BE USED AND PROGRAMMED WITH THE FOLLOWING:

DURING FLASHING DON'T WALK / "WAIT"
DURING EXTENDED PUSH BUTTON "WAIT TO CROSS (STREET NAME A) DURING WALK:
"(STREET NAME A) - WALK SIGNAL"

COT 614 HINGES SHALL BE LOCATED ON THE 4-SECTION SIGNAL HEAD AND 5-SECTION SIGNAL HEAD.

"THIS PAY ITEM SHALL INCLUDE (INSERT #) OF THE 4-SECTION "DOGHOUSE" STYLE BACKPLATE PROJECT SHALL BE ALUMINUM NON-REFLECTIVE BLACK FINISH STYLE AS APPROVED BY THE TRAFFIC ENGINEER. A 2 INCH WIDE RETRO-REFLECTIVE TAPE, OF THE BACKPLATES.

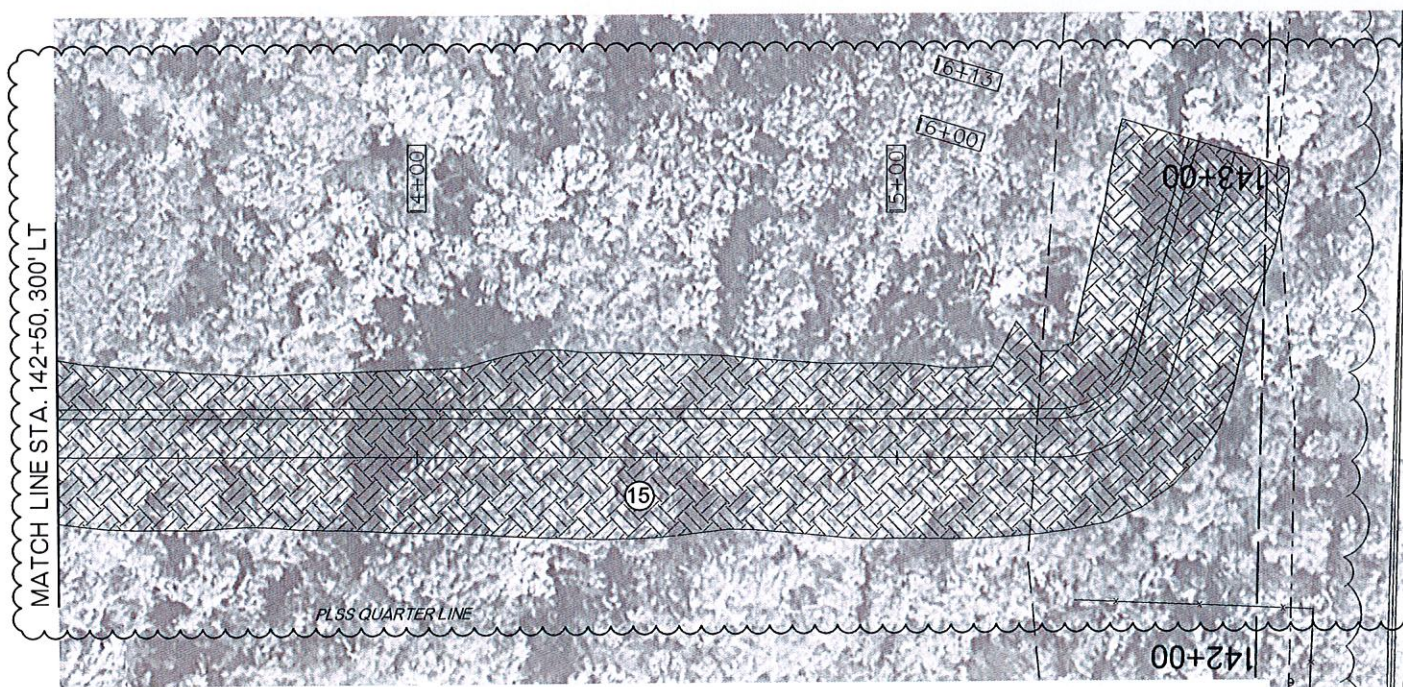
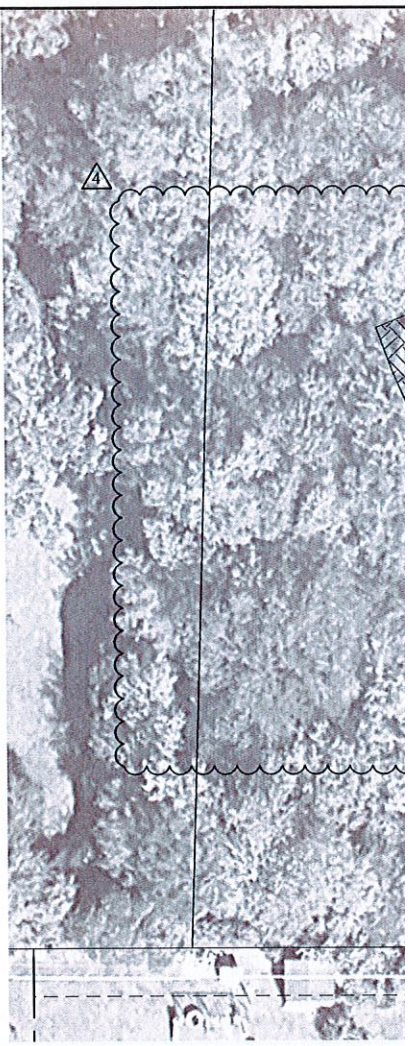
THE PEDESTRIAN SIGNAL HEAD OR APPROVED EQUAL SHALL BE INSTALLED ON THE POLES AT THE CROSSWALK.

COT 625 THIS PAY ITEM INCLUDES TRAFFIC SIGNAL EQUIPMENT TO THE CITY OF TULSA, HARVARD AVE, WHICH IS TRAFFIC SIGNAL ITEMS INCLUDING POLES, SIGNAL HEADS, PEDESTRIAN CONTROLLER CABINET ASSEMBLIES, SIGNS, MAST ARM SIGNS, AND OTHER TRAFFIC SIGNAL EQUIPMENT. THE CONTRACTOR SHALL BE RESPONSIBLE FOR CONDUIT AND WIRE WHICH SHALL BE INSTALLED BELOW GROUND LEVEL OF THE ARM POLES, AND ALL OTHER TRAFFIC SIGNAL EQUIPMENT POLES ARE TO BECOME THE

△

△

△



LEGEND

- | | | | |
|------------------------|---------------------|-----------------------|-------------------------|
| ① REMOVE PAVEMENT | ⑥ REMOVE INLET/PIPE | ⑪ REMOVE CURB RAMP | — SIDEWALK REMOVAL |
| ② REMOVE CURB & GUTTER | ⑦ MILL & OVERLAY | ⑫ REMOVE TRAFFIC ITEM | ■ PAVEMENT REMOVAL |
| ③ REMOVE DRIVEWAY | ⑧ PATCHING | ⑬ REMOVE CROSS DRAIN | □ DRIVEWAY REMOVAL |
| ④ REMOVE SIDEWALK | ⑨ REMOVE GUARDRAIL | ⑭ REMOVE HEADWALL | — CURB & GUTTER REMOVAL |
| ⑤ REMOVE MANHOLE | ⑩ REMOVE METAL PIPE | ⑮ REMOVE TREE | |
| | | ⑯ TRIM TREE | |

Ja...
LICENSED

ELECTRONIC BID PROPOSAL INSTRUCTIONS - EXCEL SPREADSHEET
PROJECT NO: 2036W0001Z, 2036A0024Z & TMUA-W 22-37

Please read the following instructions carefully.

1. After opening this file re-save it as your company's name.
2. Open the BID FORM Sheet from the tabs below.
3. Input the unit price of the appropriate pay item in the cells highlighted in blue.
4. Review all data input and check calculations to ensure accuracy of Bid.
5. Print 1 hardcopy of the "PROPOSAL" tab, BID FORM and the "SIGNATURE PAGE" tab.
6. Complete and sign the "Signature Page" document.
7. Submit hardcopy and electronic disk with Contract Documents and Specifications for Bid opening date.

LEGEND

- \$ 1.00 Cells Requiring Data Input.
- \$ 1.00 Internal Data Transfer.
- \$ 2.00 Calculated Results.

AGREEMENT FOR USING ELECTRONIC BID PROPOSAL

By and Between: Poe & Associates, Inc., (ENGINEER) and RECIPIENT. The enclosed electronic media is provided pursuant to your request and is for your limited use in connection with your submittal of Bid Proposal for Project No. 2036W0001Z, 2036A0024Z & TMUA-W 22-37. In no event shall the information be used for any other purpose or be released to third parties without the written consent of the ENGINEER. In the event of a discrepancy between the hard copy and this electronic media at delivery or in the future, the hard copy shall govern. ENGINEER hereby disclaims any and all liability for the consequences from use of the electronic media and makes no warranty or guarantee of accuracy. RECIPIENT shall assume full responsibility for the uses and consequences of the electronic media. It is agreed that ENGINEER has and retains ownership of the electronic media. ENGINEER does not warrant or guarantee that the electronic data is compatible with RECIPIENT'S computer hardware or software, and ENGINEER'S responsibility for the electronic media is limited to replacement of defective media for a period of thirty (30) days after delivery to RECIPIENT. !!! By opening and using this FILE, You AGREE to these TERMS AND CONDITIONS!!!

PROPOSAL
PROJECT NO: 2036W0001Z, 2036A0024Z & TMUA-W 22-37

TO: HONORABLE MAYOR
CITY OF TULSA, OKLAHOMA

THE UNDERSIGNED BIDDER, having carefully examined the drawings, specifications, and other Contract Documents of the above project presently on file in the City Clerk, City of Tulsa Oklahoma:

CERTIFIES THAT he has inspected the site of the proposed work and has full knowledge of the extent and character of the work involved, construction difficulties that may be encountered, and materials necessary for construction, class and type of excavation, and all other factors affecting or which may be affected by the specified work; and

CERTIFIES THAT he has not entered into collusion with any other bidder or prospective bidder relative to the project and/or bid: and

HEREBY PROPOSES: to enter into a contract to provide all necessary labor, materials, equipment and tools to completely construct and finish all the work required by the Contract Documents hereto attached and other documents referred to therein: to complete said work within 395 calendar days after the work order is issued; and to accept in full payment therefore the amount set forth below for all work actually performed as computed by the Engineer as set forth in the Contract.

Basis of Award

THE BID PROPOSAL INCLUDES BASE BIDS FOR ROADWAY, RETAINING WALLS, TRAFFIC SIGNALS, LANDSCAPING, STREET LIGHTING, WATERLINE, AND STORM SEWER. IT SHOULD BE NOTED THAT THE LOWEST RESPONSIBLE BID SHALL BE DETERMINED BY THE TOTAL BASE BIDS.

Note: - Item numbers omitted are not a part of the Contract.

PROPOSAL
PROJECT NO. 2036W0001Z, 2036A0024Z & TMUA-W 22-37
ADDENDUM 5

BID ITEM	SPEC NO.	DESCRIPTION	UNIT	QTY	DATA INPUT UNIT PRICE	TOTAL EACH ITEM
ROADWAY - BASE BID						
1	201(A)	CLEARING AND GRUBBING	LS	1		\$0.00
2	202(A)	UNCLASSIFIED EXCAVATION	CY	59,055		\$0.00
3	202(C)	ROCK EXCAVATION	CY	5,000		\$0.00
4	205(A)	TYPE A-SALVAGED TOPSOIL	CY	2,800		\$0.00
5	220	SWPPP DOCUMENTATION AND MANAGEMENT	LS	1		\$0.00
6	230(A)	SOLID SLAB SODDING	SY	16,687		\$0.00
7	303(A)	AGGREGATE BASE, TYPE A	CY	10,195		\$0.00
8	310(B)	SUBGRADE, METHOD B	SY	28,355		\$0.00
9	325	SEPARATOR FABRIC	SY	32,844		\$0.00
10	409	FABRIC REINFORCEMENT (MIRAFI PGM-G4)	SY	4,247		\$0.00
11	411(C)	SUPERPAVE, TYPE S4 (PG 70-28 OK) INSOLUBLE	TON	476		\$0.00
12	411(E)	SUPERPAVE, TYPE S6(PG 70-28 OK)	TON	178		\$0.00
13	412	COLD MILLING PAVEMENT	SY	4,247		\$0.00
14	414(B)	DOWEL JOINTED P.C.C. PAVT. (PLACEMENT)	SY	21,746		\$0.00
15	414(B)	DOWEL JOINTED P.C.C. PAVT. W/ INT. CLR. & BRICK STAMP (PLACEMENT)	SY	1,244		\$0.00
16	414(G)	P.C. CONCRETE PAVEMENT	CY	5,437		\$0.00
17	414(G)	P.C. CONCRETE PAVEMENT W/ INT. CLR. & BRICK STAMP (9")	CY	311		\$0.00
18	501(A)	STRUCTURAL EXCAVATION UNCLASSIFIED	CY	233		\$0.00
19	509(A)	CLASS AA CONCRETE	CY	617		\$0.00
20	509(C)	CLASS A CONCRETE, SMALL STRUCTURES	CY	45		\$0.00
21	509(C)	CLASS A CONCRETE	CY	591		\$0.00
22	509(C)	CLASS C CONCRETE	CY	95		\$0.00
23	511(A)	REINFORCING STEEL	LB	113,188		\$0.00
24	COT 608	GROUND SIGN	SF	506		\$0.00
25	COT 608	1-1/2" SIGN POST	LF	59		\$0.00
26	COT 608	1-3/4" SIGN POST	LF	790		\$0.00
27	COT 608	2" SIGN POST	LF	252		\$0.00
28	609(B)	1'-6" COMBINED CURB AND GUTTER (8" BARRIER)	LF	11,579		\$0.00
29	610(A)	4" CONCRETE SIDEWALK	SY	1,983		\$0.00
30	610(A)	4" CONCRETE SIDEWALK W/ INT. CLR. & BRICK STAMP	SY	83		\$0.00
31	610(B)	6" CONCRETE SIDEWALK (ADA RAMPS AND TRAIL)	SY	7,196		\$0.00
32	610(B)	6" CONCRETE DRIVEWAY (H.E.S.)	SY	118		\$0.00
33	610(I)	TACTILE WARNING DEVICE	SF	453		\$0.00
34	611(A)	4' MANHOLE, COMPLETE IN PLACE (STORM)	EA	9		\$0.00
35	611(A)	5' MANHOLE, COMPLETE IN PLACE (STORM)	EA	9		\$0.00
36	611(A)	6' MANHOLE, COMPLETE IN PLACE (STORM)	EA	25		\$0.00
37	611(A)	8' MANHOLE, COMPLETE IN PLACE (STORM)	EA	6		\$0.00
38	611(B)	ADDITIONAL DEPTH IN (4' I.D.) MANHOLE (STORM SEWER)	VF	47		\$0.00
39	611(B)	ADDITIONAL DEPTH IN (5' I.D.) MANHOLE (STORM SEWER)	VF	41		\$0.00
40	611(B)	ADDITIONAL DEPTH IN (6' I.D.) MANHOLE (STORM SEWER)	VF	124		\$0.00
41	611(B)	ADDITIONAL DEPTH IN (8' I.D.) MANHOLE (STORM SEWER)	VF	38		\$0.00
42	611(G)	INLET, RCI DESIGN 1048 W/AMH, COMPLETE IN PLACE	EA	3		\$0.00
43	611(G)	INLET, RCI DESIGN 1096 W/AMH, COMPLETE IN PLACE	EA	33		\$0.00
44	611(G)	INLET SMD DESIGN 1, COMPLETE IN PLACE	EA	10		\$0.00
45	611(G)	INLET SMD DESIGN 2A, COMPLETE IN PLACE	EA	3		\$0.00
46	611(G)	INLET SMD DESIGN 2B, COMPLETE IN PLACE	EA	1		\$0.00
47	611(G)	INLET CICI DESIGN 2(A), COMPLETE IN PLACE	EA	2		\$0.00
48	611(G)	INLET CICI DESIGN 2(D), COMPLETE IN PLACE	EA	1		\$0.00
49	611(G)	INLET CICI DESIGN 4(B), COMPLETE IN PLACE	EA	2		\$0.00
50	611(G)	INLET CICI DESIGN 4(D), COMPLETE IN PLACE	EA	1		\$0.00
51	611(G)	INLET CICI DESIGN 2(A) WITH ACCESS MANHOLE, COMPLETE IN PLACE	EA	3		\$0.00
52	611(G)	INLET CDI 42" DESIGN NO.5	EA	1		\$0.00
53	611(G)	INLET CDI 48" DESIGN NO.6	EA	1		\$0.00
54	611(G)	INLET TYPE 1 GPI	EA	2		\$0.00
55	611(H)	ADDITIONAL DEPTH IN RCI 1048 W/ MANHOLE	VF	10		\$0.00
56	611(H)	ADDITIONAL DEPTH IN RCI 1096 W/ MANHOLE	VF	111		\$0.00
57	611(H)	ADDITIONAL DEPTH IN CICI DESIGN 2	VF	5		\$0.00
58	611(H)	ADDITIONAL DEPTH IN CICI DESIGN 4	VF	4		\$0.00
59	611(H)	ADDITIONAL DEPTH IN CICI DESIGN 2A WITH ACCESS MANHOLE	VF	9		\$0.00
60	611(L)	JUNCTION BOX, COMPLETE IN PLACE	CF	1,350		\$0.00
61	612(C)	INLET ADJUSTED TO GRADE WITH TYPE C GRATÉS	EA	2		\$0.00
62	612(E)	VALVE BOX ADJUSTED TO GRADE	EA	7		\$0.00
63	613(A)	54" REINFORCED CONCRETE PIPE (RCP), COMPLETE IN PLACE	LF	114		\$0.00
64	613(E)	18" CORRUGATED POLYPROPYLENE PIPE (CPP), COMPLETE IN PLACE	LF	2,154		\$0.00
65	613(E)	24" CORRUGATED POLYPROPYLENE PIPE (CPP), COMPLETE IN PLACE	LF	413		\$0.00
66	613(E)	30" CORRUGATED POLYPROPYLENE PIPE (CPP), COMPLETE IN PLACE	LF	589		\$0.00
67	613(E)	36" CORRUGATED POLYPROPYLENE PIPE (CPP), COMPLETE IN PLACE	LF	1,200		\$0.00
68	613(E)	42" CORRUGATED POLYPROPYLENE PIPE (CPP), COMPLETE IN PLACE	LF	486		\$0.00
69	613(E)	48" CORRUGATED POLYPROPYLENE PIPE (CPP), COMPLETE IN PLACE	LF	1,216		\$0.00
70	613(E)	60" CORRUGATED POLYPROPYLENE PIPE (CPP), COMPLETE IN PLACE	LF	385		\$0.00
71	613(L)	18" PREFAB. CULVERT END SEC.	EA	1		\$0.00
72	613(L)	36" PREFAB. CULVERT END SEC.	EA	2		\$0.00
73	619(A)	REMOVAL OF STRUCTURES AND OBSTRUCTIONS	LS	1		\$0.00
74	619(B)	REMOVAL OF PAVEMENT	SY	20,423		\$0.00
75	619(B)	REMOVAL OF DRIVEWAY	SY	555		\$0.00
76	619(B)	REMOVAL OF CURB AND GUTTER	LF	2,215		\$0.00
77	619(B)	REMOVAL OF SIDEWALK	SY	486		\$0.00
78	619(B)	REMOVAL OF CURB RAMP	EA	4		\$0.00

BID ITEM	SPEC NO.	DESCRIPTION	UNIT	QTY	DATA INPUT UNIT PRICE	TOTAL EACH ITEM
79	619(B)	REMOVAL OF DRAINAGE PIPE	LF	1,162		\$0.00
80	619(B)	REMOVAL OF DRAINAGE INLET	EA	8		\$0.00
81	619(B)	REMOVAL OF MANHOLE	EA	1		\$0.00
82	619(B)	REMOVAL OF HEADWALL	EA	8		\$0.00
83	619(B)	REMOVAL OF GUARDRAIL	LF	533		\$0.00
84	619(B)	REMOVAL OF RIP-RAP	SY	248		\$0.00
85	619(B)	REMOVAL OF FENCE	LF	1,915		\$0.00
86	619(B)	REMOVAL OF NEIGHBORHOOD SIGN	EA	3		\$0.00
87	619(B)	REMOVAL OF FLAGSTONE DRIVEWAY	SY	67		\$0.00
88	619(B)	REMOVAL OF GATE AND STONE COLUMNS	EA	1		\$0.00
89	619(B)	REMOVAL OF ROCK WALL	LF	991		\$0.00
90	619(B)	REMOVAL OF RETAINING WALL	LF	180		\$0.00
91	619(B)	REMOVAL OF CONCRETE DITCH LINER	LF	200		\$0.00
92	619(B)	REMOVAL OF IRON PIPE	LF	632		\$0.00
93	624(E)	ORNAMENTAL 72" AMERISTAR FENCE	LF	698		\$0.00
94	624(E)	(PL) WOOD PRIVACY FENCE (6' HIGH)	LF	375		\$0.00
95	624(E)	FENCE-STYLE CLF (4' HIGH, CLASS A, TOP RAIL)	LF	332		\$0.00
96	624(E)	FENCE-STYLE CLF (6' HIGH, VINYL COATED, SMOOTH TOP WIRE)	LF	1,202		\$0.00
97	624(F)	GATE-STYLE CLF (6' HIGH X 12' LONG, VINYL COATED)	EA	2		\$0.00
98	624(H)	(PL) INSTALL ORNAMENTAL GATE SUPPLIED BY OWNER	EA	1		\$0.00
99	624(H)	(PL) GATE - ORNAMENTAL (6' HIGH X 8' LONG, STEEL)	EA	2		\$0.00
100	624(H)	(PL) CONCRETE GATE COLUMNS, COMPLETE, IN PLACE	EA	6		\$0.00
101	640(A)	FIELD OFFICE	EA	1		\$0.00
102	641	MOBILIZATION	EA	1		\$0.00
103	642	CONSTRUCTION STAKING LEVEL II	EA	1		\$0.00
104	855(A)	TRAFFIC STRIPE(4") (THERMOPLASTIC)	LF	28,192		\$0.00
105	855(A)	TRAFFIC STRIPE(12") (THERMOPLASTIC)	LF	20		\$0.00
106	855(A)	TRAFFIC STRIPE(24") (THERMOPLASTIC)	LF	1,238		\$0.00
107	855(B)	TRAFFIC STRIPE(THERMOPLASTIC)(SYMBOLS, WORDS, ETC)	EA	27		\$0.00
108	855(B)	TRAFFIC STRIPE(THERMOPLASTIC)(SOLID GREEN FILL)	SF	30		\$0.00
109	857(C)	REMOVABLE PAVEMENT MARKING TAPE	LF	5,000		\$0.00
110	857(E)	CONSTRUCTION ZONE PAVEMENT MARKERS (FLEX TABS) TYPE 2-2	EA	2,500		\$0.00
111	857(F)	PAVEMENT MARKING REMOVAL	LF	2,000		\$0.00
112	880(A)	ARROW DISPLAY	SD	1,600		\$0.00
113	880(B)	SIGNS 0.00 TO 6.25 SF	SD	20,000		\$0.00
114	880(B)	SIGNS 6.26 TO 15.99 SF	SD	20,000		\$0.00
115		NOT USED				
116	880(C)	BARRICADES (TYPE III)	SD	8,000		\$0.00
117	880(E)	TYPE "A" WARNING LIGHT	SD	24,000		\$0.00
118	880(F)	DRUMS	SD	30,000		\$0.00
119	880(G)	TUBE CHANNELIZERS	SD	40,000		\$0.00
120	880(I)	FLAGGER	FD	500		\$0.00
121	882(B)	(PL) REMOTE CONTROLLED CHANGEABLE MESSAGE SIGN	SD	1,600		\$0.00
122	SPECIAL	PROJECT SIGN (CITY OF TULSA)	EA	2		\$0.00
123	SPECIAL	URBAN RIGHT-OF-WAY RESTORATION	EA	1		\$0.00
124	SPECIAL	OWNER ALLOWANCE	EA	150,000	\$1.00	\$150,000.00
125	SPECIAL	SIGNAGE FOR LOCAL BUSINESS ACCESS (BAS-1)	SD	500		\$0.00
126	SPECIAL	TEMPORARY FENCE	LF	2,800		\$0.00
127	COT 202	QUICK SET FLOWABLE FILL	CY	200		\$0.00
128	COT 334	CONSTRUCTION AS-BUILTS	LS	1		\$0.00
129	COT 335	CONTRACTOR'S QUALITY CONTROL	LS	1		\$0.00
130	SPECIAL	PVC DRAIN BASIN, CONNECT UNDERDRAIN TO 13" HDPE SLIPLINE	EA	1		\$0.00
131	COT 409	SLIPLINE 18" CMP SD WITH SDR 26HDPE, 13.38"O.D.	LF	140		\$0.00
213	SPECIAL	RELOCATION OF ROCK AND SUBSOIL WITHIN OSAGE COUNTY	CY	61,800		\$0.00
214	613(A)	24" REINFORCED CONCRETE PIPE (RCP), COMPLETE IN PLACE	LF	33		\$0.00
215	613(O)	SP. END SECTION OF 24" RCP ROUND	EA	2		\$0.00
216	624	(PL) 4' WIDE GATE, WOOD PRIVACY FENCE (6' HIGH)	EA	1		\$0.00
217	631(A)	(SP)STATIONARY BOLLARD	EA	3		\$0.00
TOTAL ROADWAY BASE BID						\$150,000.00

BID ITEM	SPEC NO.	DESCRIPTION	UNIT	QTY	DATA INPUT UNIT PRICE	TOTAL EACH ITEM
RETAINING WALLS - BASE BID						
132	502	TEMPORARY EARTH RETAINAGE	LS	1		\$0.00
133		NOT USED				
134	509(D)	CLASS C CONCRETE	CY	164		\$0.00
135	510(A)	RETAINING WALL, SOLDIER PILE, COMPLETE, IN PLACE	SY	3,240		\$0.00
136	510(A)	RETAINING WALL, C.I.P., COMPLETE, IN PLACE	SY	1,949		\$0.00
137	510(D)	GRAFFITI TREATMENT	SF	34,774		\$0.00
138	510(E)	DECORATIVE WALL	LF	978		\$0.00
139	514(K)	(PL)PILOT HOLES	LF	2,814		\$0.00
140	624	ORNAMENTAL 42" AMERISTAR FENCE	LF	783		\$0.00
141	624	ORNAMENTAL 72" AMERISTAR FENCE	LF	892		\$0.00
142	624(E)	FENCE-STYLE CLF (6' HIGH, VINYL COATED, TOP RAIL)	LF	1,039		\$0.00
218	514(A)	PILES FURNISHED	LF	5,794		\$0.00
TOTAL RETAINING WALL BASE BID						\$0.00

BID ITEM	SPEC NO.	DESCRIPTION	UNIT	QTY	DATA INPUT UNIT PRICE	TOTAL EACH ITEM
----------	----------	-------------	------	-----	--------------------------	-----------------

BID ITEM	SPEC NO.	DESCRIPTION	UNIT	QTY	DATA INPUT UNIT PRICE	TOTAL EACH ITEM
TRAFFIC SIGNAL - BASE BID						
143	COT 601	PULL BOX (SIZE II)	EA	6		\$0.00
144	COT 601	PULL BOX (SIZE III)	EA	1		\$0.00
145	COT 602	1" PVC SCH.40 PLASTIC CONDUIT TRENCHED	LF	150		\$0.00
146	COT 602	2" PVC SCH.40 PLASTIC CONDUIT TRENCHED	LF	150		\$0.00
147	COT 602	2" HDPE CONDUIT BORED	LF	50		\$0.00
148	COT 602	3" PVC SCH.40 PLASTIC CONDUIT TRENCHED	LF	265		\$0.00
149	COT 602	2-3" HDPE CONDUIT BORED	LF	230		\$0.00
150	COT 603	PEDESTRIAN SIGNAL FOOTING	EA	10		\$0.00
151	COT 610	TRAFFIC CONTROLLER CABINET ASSEMBLY	EA	1		\$0.00
152	COT 611	GREEN #6 THHN ELECTRICAL CONDUCTOR	LF	635		\$0.00
153	COT 611	GREEN #12 THHN ELECTRICAL CONDUCTOR	LF	635		\$0.00
154	COT 611	2 #14 SHIELDED ELECTRICAL CONDUCTOR	LF	465		\$0.00
155	COT 611	4 #14 TRAFFIC SIGNAL ELECTRICAL CABLE	LF	360		\$0.00
156	COT 611	7 #14 TRAFFIC SIGNAL ELECTRICAL CABLE	LF	640		\$0.00
157	COT 612	CABINET BASE, APRON AND GUARD	EA	1		\$0.00
158	COT 613	AUDIBLE PEDESTRIAN PUSH BUTTON AND STATION AND SIGNS	EA	16		\$0.00
159	COT 613	AUDIBLE PEDESTRIAN PUSH BUTTON CONFIG/PROGRAMMING DEVICE	EA	3		\$0.00
160	COT 613	AUDIBLE PEDESTRIAN PUSH BUTTON CONTROL CARD/UNIT	EA	3		\$0.00
161	COT 614	LED ICC PEDESTRIAN HEAD (#33)	EA	16		\$0.00
162	COT 617	6" PEDESTRIAN PUSH BUTTON POLE	EA	7		\$0.00
163	COT 617	10" PEDESTAL POLE	EA	3		\$0.00
164	COT 625	REMOVAL OF TRAFFIC ITEMS	EA	1		\$0.00
165	COT 625	TRAFFIC SIGNAL MAINTENANCE	LS	1		\$0.00
166	COT 625	SIGNAL MODIFICATIONS FOR LANE CLOSURES	EA	1		\$0.00
219	COT 611	20 #14 TRAFFIC SIGNAL ELECTRICAL CABLE	LF	640		\$0.00
TOTAL TRAFFIC SIGNAL BASE BID						\$0.00

BID ITEM	SPEC NO.	DESCRIPTION	UNIT	QTY	DATA INPUT UNIT PRICE	TOTAL EACH ITEM
LANDSCAPE - BASE BID						
167	SPECIAL	3/4" OZARKA STONE MULCH	TON	5		\$0.00
168	COT831	(PL) PLANTING (MATERIALS) - TOPSOIL (FOR SODDING)	CY	1,359		\$0.00
169	COT832	SOLID SLAB SODDING (U3 BERMUDA)	SF	231,092		\$0.00
220	831	PLANTING BACKFILL	EA	155		\$0.00
TOTAL LANDSCAPE BASE BID						\$0.00

BID ITEM	SPEC NO.	DESCRIPTION	UNIT	QTY	DATA INPUT UNIT PRICE	TOTAL EACH ITEM
WATER LINE - BASE BID						
170	COT 301	RIGHT-OF-WAY CLEARING AND RESTORING, COMPLETE IN PLACE	SY	692		\$0.00
171	COT 302	EXCAVATION AND BACKFILL, UNCLASSIFIED	CY	654		\$0.00
172	COT 303	AGGREGATE BASE TYPE A	CY	178		\$0.00
173	COT 304	CONSTRUCTON STAKING	EA	1		\$0.00
174	COT 307(A)	6" DIP, CL 51 POLYETHYLENE WRAPPED, (RJ)	LF	150		\$0.00
175	COT 307(A)	10" DIP, CL 51 POLYETHYLENE WRAPPED, (RJ)	LF	1,010		\$0.00
176	COT 307(A)	12" DIP, CL 51 POLYETHYLENE WRAPPED, (RJ)	LF	305		\$0.00
177	COT 312(A)	6" 22.5° D.I. BEND (RJ)	EA	2		\$0.00
178	COT 312(A)	10" 45° D.I. BEND (RJ)	EA	6		\$0.00
179	COT 312(A)	12" 22.5° D.I. BEND (RJ)	EA	2		\$0.00
180	COT 312(A)	12" 45° D.I. BEND (RJ)	EA	2		\$0.00
181	COT 312(B)	6"x6" D.I. TEE (RJ)	EA	1		\$0.00
182	COT 312(B)	12"x6" D.I. TEE (RJ)	EA	1		\$0.00
183	COT 312(C)	6" D.I. PLUG (RJ)	EA	1		\$0.00
184	COT 312(C)	10" D.I. PLUG (RJ)	EA	2		\$0.00
185	COT 312(C)	12" D.I. PLUG (RJ)	EA	1		\$0.00
186	COT 312(D)	12"x10" D.I. REDUCER (RJ)	EA	1		\$0.00
187	COT 312(E)	6" D.I. SLEEVE (RJ)	EA	1		\$0.00
188	COT 312(E)	10" D.I. SLEEVE (RJ)	EA	1		\$0.00
189	COT 312(E)	12" D.I. SLEEVE (RJ)	EA	1		\$0.00
190	COT 317	6" GATE VALVE (RJ)	EA	3		\$0.00
191	COT 317	10" GATE VALVE (RJ)	EA	2		\$0.00
192	COT 317	12" GATE VALVE (RJ)	EA	1		\$0.00
193	COT 317(A)	2" AIR RELIEF VALVE & VAULT	EA	1		\$0.00
194	COT 317(B)	3-WAY FIRE HYDRANT, IN PLACE	EA	1		\$0.00
195	COT 317(D)	12" FIRE HYDRANT EXTENSION	EA	1		\$0.00
196	COT 318(A)	VALVE BOX	EA	6		\$0.00
197	COT 318(B)	VALVE BOX EXTENSION	VF	4		\$0.00
198	COT 325	SODDING AND SEEDING	SY	393		\$0.00
199	COT 326	STREET WASH DOWN	LF	6,800		\$0.00
200	COT 329	REMOVE AND REPLACE PAVEMENT (8" APC)	SY	19		\$0.00
201	COT 333(A)	ABANDON 6" WATERLINE	LF	165		\$0.00
202	COT 333(B)	ABANDON 10" WATERLINE	LF	985		\$0.00
203	COT 333(C)	ABANDON 12" WATERLINE	LF	252		\$0.00
204	COT 334	CONSTRUCTION AS-BUILT	EA	1		\$0.00
205	612(G)	FIRE HYDRANT RELOCATION	EA	2		\$0.00
206	SPECIAL	OWNER ALLOWANCE	ALLOW	10,000	\$1.00	\$10,000.00
TOTAL WATER LINE - BASE BID						\$10,000.00

TOTAL BID (Base Bids)

\$160,000.00

Enclosed is a () Bidder's Surety Bond, () Certified Check, () Cashier's Check for

_____ Dollars (\$ _____) Figures

which the City of Tulsa may retain or recover as liquidated damages in the event that the undersigned fails to enter into contract for the work covered by this proposal., provided the Contract is awarded to the undersigned within thirty (30) days, or within ninety (90) days if Federal funds are utilized, from the date fixed for opening of bids and the undersigned fails to execute said Contract and furnish the required bonds and other requirements as called for in these Contract Documents within thirty (30) days after award of Contract.

Dated at Tulsa, Oklahoma, this _____ day of _____, 20__.

Respectfully submitted,

(Complete legal name of company)

(State of Organization)

By: _____
Title: _____

ATTEST: _____
Title: Corporate Secretary

(SEAL)

Address: _____

Telephone Number: _____

Fax Number: _____

The undersigned acknowledge receipt of the following Addenda (give number and date of each):

