



**PUBLIC WORKS**  
Engineering

**DATE:**  
August 18, 2025

**TO:**  
Plan Holders  
Contractors

**FROM:**  
Jenna Richardson  
918-596-9637  
[jennarichardson@cityoftulsa.org](mailto:jennarichardson@cityoftulsa.org)

## EMAIL TRANSMITTAL

ADDENDUM NO. 6

**PROJECT NO. 2036W0001Z, 2036A0024Z & TMUA-W 22-37**  
Arterial Street Reconstruction Gilcrease Museum Rd. (N.  
25th W. Ave.) W. Admiral Blvd. to W. Pine St.

Number of pages: **5**

All addenda to the contract documents should be denoted on the  
last page of the Proposal in the space provided.

Thank you,  
Contract Administration



**PUBLIC WORKS**  
Engineering

**DATE:**  
August 18, 2025

**ADDENDUM NO. 6  
TO  
PROJECT NO. 2036W0001Z, 2036A0024Z & TMUA-W 22-37  
ARTERIAL STREET RECONSTRUCTION GILCREASE MUSEUM RD.  
(N. 25TH W. AVE.) W. ADMIRAL BLVD. TO W. PINE ST.**

This Addendum No. 6 consisting of two (2) items, submitted by City of Tulsa is hereby made a part of the Contract Documents to the same extent as though it were originally included therein and shall supersede anything contained in the Plans and Specifications with which it might conflict. **All addenda to the contract documents should be denoted on the last page of the Proposal in the space provided.**

This Addendum No. 6 consists of the following:

1. Delete the existing bid proposal form in its entirety and replace with the revised Bid Proposal located at: <https://www.cityoftulsa.org/government/departments/public-works/engineering-services/construction-bids/>. It is the Bidder's responsibility to download the revised Bid Proposal. **Note: Proposal should be version P-1B.**
2. Include plans sheets not scanned properly from Addendum No. 5.

**All other provisions of the Plans and Specifications shall remain in full force and effect.**

**CITY OF TULSA**



Paul D. Zachary, P.E.  
Deputy Director

**HAS**  
HAS/DDH/JR



**TRAFFIC OPERATIONS GENERAL CONSTRUCTION NOTES**

- (A) THE CONTRACTOR SHALL BE RESPONSIBLE FOR MAINTAINING THE TRAFFIC SIGNAL IN A PROPER WORKING CONDITION DURING CONSTRUCTION AS DIRECTED BY THE TRAFFIC ENGINEER AND FOR FOLLOWING THE REQUIREMENTS OF THE COT SPEC 626 - TRAFFIC SIGNAL CONSTRUCTION AND OPERATION. ALL TRAFFIC MATERIALS SHALL MEET THE REQUIREMENTS OF COT SPEC 627 - PRE-QUALIFICATION FOR TRAFFIC OPERATIONS MATERIALS OR AS DIRECTED BY THE TRAFFIC ENGINEER. CONTRACTORS SHALL MEET THE REQUIREMENTS OF COT SPEC 628 - SIGNAL AND LIGHTING PROJECT CONTRACTOR EXPERIENCE REQUIRED.
- (B) THE CONTRACTOR SHALL OBTAIN THE NECESSARY PERMISSION FOR ELECTRICAL INSPECTION ON ALL SIGNAL AND LIGHTING WORK PER COT SPEC 626 - TRAFFIC SIGNAL CONSTRUCTION AND OPERATION.
- (C) ALL TRAFFIC MATERIALS REMOVED SHALL BE HANDLED PER COT SPEC 625 - REMOVAL OF TRAFFIC ITEMS.
- (D) THIS PROJECT HAS BEEN DESIGNED AND IS TO BE CONSTRUCTED ACCORDING TO THE REQUIREMENTS OF THE 2022 VERSION OF THE CITY OF TULSA TRAFFIC OPERATIONS STANDARDS AND SPECIFICATIONS.

**TRAFFIC OPERATIONS PAY ITEM NOTES**

- COT 602** ALL CONDUIT ENDS SHALL BE REAMED AND BUSHINGS SHALL BE INSTALLED PRIOR TO PULLING ANY WIRES.
- COT 603** POLE FOUNDATIONS SHALL BE CONSTRUCTED ACCORDING TO THE APPLICABLE REQUIREMENTS OF ODOT STANDARD SPECIFICATIONS FOR DRILLED SHAFT FOUNDATIONS AS DIRECTED BY THE TRAFFIC ENGINEER.
- COT 610** THE CABINET PROVIDED SHALL BE A STRETCH CABINET MEETING THE CABINET AND DOOR HEIGHT SPECIFICATIONS OF A MCCAIN 332S CABINET. ALL OTHER DIMENSIONS SHALL MEET CURRENT COT STANDARDS AND SPECIFICATIONS  
  
THE TRAFFIC SIGNAL CONTROLLER PROVIDED SHALL BE AN ECONOLITE RACK MOUNT COBALT CONTROLLER IN A 332 SIGNAL CABINET OR 332S WHERE A BATTERY BACKUP IS INCLUDED. TRAFFIC SIGNAL CABINETS SHALL BE A 332S EXT RACK PER THE 2025SPEC. THE SIDES OF THE CONTROLLER CABINET SHALL BE PARALLEL TO THE STREETS. THE FRONT DOOR OF THE CABINET SHALL FACE AWAY FROM THE INTERSECTION. THE DOOR HINGES SHALL BE LOCATED ON THE SIDES OF THE CABINET FURTHEST AWAY FROM THE INTERSECTION, SO THE DOORS SWING OPEN AWAY FROM THE INTERSECTION.  
  
CONFLICT MONITOR SHALL BE AN EDI 2018ECLIP OR APPROVED EQUAL. AN ETHERNET PORT SHALL BE PROVIDED ON THE FRONT PANEL. THE ETHERNET PORT SHALL BE ELECTRICALLY ISOLATED FROM THE MMU ELECTRONICS AND SHALL PROVIDE MINIMUM OF 1500 VRMS ISOLATION. THE CONNECTER SHALL BE AN RJ-45 EIGHT PIN CONNECTOR. AN HTML BASED CAPABILITY SHALL BE PROVIDED IN THE MONITOR TO CONFIGURE THE NETWORK PARAMETERS OF THE MMU ETHERNET PORT USING A STANDARD HTML BROWSER. ALL DISPLAY INDICATORS SHALL BE MOUNTED ON THE FRONT PANEL OF THE SIGNAL MONITOR AND SHALL BE WATER CLEAR, T-1 PACKAGE, SUPER BRIGHT TYPE LEDS. ALL FAULT LEDS SHALL BE RED EXCEPT THE PWR INDICATOR WHICH SHALL BE GREEN. A SEPARATE RED, YELLOW AND GREEN INDICATOR SHALL BE PROVIDED FOR EACH CHANNEL.  
  
INCLUDE 2-19" RACK SHELVES, THAT ARE CHATSWORTH PRODUCTS PART NUMBER 10758-701 OR APPROVED EQUAL, IN ADDITION TO WHAT IS OUTLINED IN COT 610 SPECIFICATION. RACKS SHALL BE DESIGNED TO HOLD SMALL PERIPHERAL EQUIPMENT IN A CENTRAL LOCATION. EACH SHELF TYPICALLY HOLDS TWO UNITS AND ALLOWS A CONVENIENT CABLE RUN DOWN THE INSIDE OF THE RACK CHANNEL. RACK SHALL HOLD EQUIPMENT UP TO 17.35"W X 9.82"D AND MADE OF STRONG, LIGHTWEIGHT ALUMINUM THAT CAN SUPPORT UP TO 50 LB.  
  
THE CONTROLLER CABINET DOORS SHALL BE EQUIPPED WITH A CL-TC1 GEN 2 CYBERLOCK CYLINDER AND EITHER A15481RS CCL TRAFFIC CABINET LOCK RH, OR A15481LS CCL TRAFFIC CABINET LOCK LH. THE CONTRACTOR WILL BE REQUIRED TO PURCHASE A CYBERKEY BLUE 3 THAT SHALL BE PROGRAMMED BY TRAFFIC OPERATIONS AT 4015 N HARVARD AVE, TULSA, OK 74115.  
  
THE BATTERY BACKUP SYSTEM SHALL BE ECONOLITE ZX2000-48 SUPER CAPACITOR BATTERY MODULES AND DBLMXU-48 SERIES DOUBLE CONVERSION UPS.  
  
THE CONTRACTOR SHALL DELIVER THE SIGNAL CABINET FULLY WIRED AND READY FOR INSTALLATION TO THE COT TRAFFIC OPERATIONS DIVISION FOR INSPECTION AND APPROVAL PRIOR TO INSTALLATION. COT WILL NOTIFY THE

CONTRACTOR OF ANY DEFICIENCIES OR APPROVE THE CABINET WITHIN TWO WEEKS PER COT SPECIFICATION 610 FOR TRAFFIC SIGNAL CONTROLLER CABINET ASSEMBLIES.

- COT 613** THE AUDIBLE PUSH BUTTONS PROVIDED SHALL BE POLARA IN2 WITH EITHER A SHELF MOUNT CONTROL UNIT OR A CARD RACK300 SERIES CONTROL UNIT. PUSH BUTTONS SHALL BE INSTALLED ON POLES SUCH THAT THE PUSH BUTTONS ARE INSTALLED IN ACCORDANCE WITH ADA, PROWAG, AND MUTCD REQUIREMENTS, AND WITHIN 10 INCHES MAXIMUM FROM THE EDGE OF THE LEVEL, ALL-WEATHER SURFACE (SIDEWALK LANDING) AND WITHIN 10 FEET MAXIMUM FROM THE FACE OF THE CURB AT RAMP. PUSH BUTTONS SHALL BE MOUNTED 42 INCHES ABOVE THE LANDING, ON THE SIDE OF THE POLE CLOSEST TO THE CORRESPONDING CROSSWALK. IF A PUSH BUTTON EXTENDER ARM IS NEEDED, THE EXTENDER ARM SHALL NOT EXCEED 12 INCHES IN LENGTH, WHEN PUSH BUTTONS ARE LOCATED WITHIN 10 FEET OF EACH OTHER, AUDIBLE VOICE MESSAGES SHALL BE USED. THE PUSH BUTTONS SHALL BE FACTORY PROGRAMMED WITH THE FOLLOWING VERBAL MESSAGES:  
  
**DURING FLASHING DON'T WALK AND STEADY DON'T WALK:**  
"WAIT"  
**DURING EXTENDED PUSH BUTTON PRESS (TWO SECONDS OR LONGER)**  
"WAIT TO CROSS (STREET NAME A) AT (STREET NAME B)"  
**DURING WALK:**  
"(STREET NAME A) - WALK SIGN IS ON TO CROSS (STREET NAME A)"
- COT 614** HINGES SHALL BE LOCATED TO THE LEFT SIDE FOR 3-SECTION SIGNAL HEADS AND 4-SECTION SIGNAL HEADS, AND TOWARD THE OUTSIDE EDGES FOR A 5-SECTION SIGNAL HEAD.  
  
"THIS PAY ITEM SHALL INCLUDE (INSERT #) OF THE 3-SECTION BACKPLATES, (INSERT #) OF THE 4-SECTION BACKPLATES, AND (INSERT #) OF THE 5-SECTION "DOGHOUSE" STYLE BACKPLATES. ALL BACKPLATES PROVIDED ON THIS PROJECT SHALL BE ALUMINUM, WITH A DURABLE, FACTORY-APPLIED, NON-REFLECTIVE BLACK FINISH (POWDER COATED, BAKED ENAMEL, OR OTHER STYLE AS APPROVED BY THE TRAFFIC ENGINEER) WITH LOUVERS IN THE BACKPLATE." A 2 INCH WIDE STRIP OF FLUORESCENT YELLOW RETRO-REFLECTIVE TAPE, TYPE IX, SHALL BE USED AT THE FRONT PERIMETER OF THE BACKPLATES.  
  
THE PEDESTRIAN SIGNAL HEADS PROVIDED SHALL BE EAGLE 16" PEDESTRIAN SIGNAL HEAD OR APPROVED EQUAL. ALL PEDESTRIAN SIGNAL HEADS SHALL BE INSTALLED ON THE POLES SUCH THAT THE SIGNAL HEADS ARE VISIBLE FROM THE CROSSWALK.
- COT 625** THIS PAY ITEM INCLUDES THE REMOVAL AND DELIVERY OF THE FOLLOWING EQUIPMENT TO THE CITY OF TULSA TRAFFIC OPERATIONS SHOP AT 3801 N HARVARD AVE, WHICH IS TO REMAIN THE PROPERTY OF THE CITY OF TULSA: TRAFFIC SIGNAL ITEMS INCLUDE; MULTI-SIDED GALVANIZED TRAFFIC SIGNAL POLES, SIGNAL HEADS, PEDESTRIAN HEADS AND PUSH BUTTONS, BACK PLATES, CONTROLLER CABINET ASSEMBLY, CABINET GUARD, UNDAAMAGED PULL BOX LIDS, MAST ARM SIGNS, ASTRO-BRACKETS, SPAN WIRE EQUIPMENT AND ANY OTHER TRAFFIC SIGNAL EQUIPMENT REMOVED EXCEPT FOR THE PULL BOXES, CONDUIT AND WIRE WHICH SHALL BECOME THE PROPERTY OF THE CONTRACTOR. THE PRICE BID SHALL INCLUDE THE REMOVAL OF ALL FOOTINGS BELOW GROUND LEVEL OR AS DIRECTED BY THE ENGINEER. FOOTINGS, GREEN ARM POLES, AND ALL OTHER SIGNAL POLES OTHER THAN THE MULTI-SIDED POLES ARE TO BECOME THE PROPERTY OF THE CONTRACTOR.

**SUMMARY OF PAY QUANTITIES**

ITEM	SPEC	DESCRIPTION	NOTES	UNIT	QUANTITY
143	COT 601	PULL BOX (SIZE II)		EA.	6
144	COT 601	PULL BOX (SIZE III)		EA.	1
145	COT 602	1" PVC SCH. 40 PLASTIC CONDUIT TRENCHED	(COT 602)	L.F.	150
146	COT 602	2" PVC SCH. 40 PLASTIC CONDUIT TRENCHED	(COT 602)	L.F.	150
147	COT 602	2" PVC SCH. 40 PLASTIC CONDUIT BORED	(COT 602)	L.F.	50
148	COT 602	3" PVC SCH. 40 PLASTIC CONDUIT TRENCHED	(COT 602)	L.F.	265
149	COT 602	2-3" PVC SCH. 40 PLASTIC CONDUIT BORED	(COT 602)	L.F.	230
150	COT 603	PEDESTRIAN SIGNAL FOOTING	(COT 603)	EA.	10
151	COT 610	TRAFFIC CONTROLLER CABINET ASSEMBLY	(COT 610)	EA.	1
152	COT 611	GREEN #6 THHN ELECTRICAL CONDUCTOR		L.F.	635
153	COT 611	GREEN #12 THHN ELECTRICAL CONDUCTOR		L.F.	635
154	COT 611	2 #14 SHIELDED ELECTRICAL CONDUCTOR		L.F.	465
155	COT 611	4 #14 TRAFFIC SIGNAL ELECTRICAL CABLE		L.F.	360
156	COT 611	7 #14 TRAFFIC SIGNAL ELECTRICAL CABLE		L.F.	640
157	COT 612	CABINET BASE, APRON AND GUARD		EA.	1
158	COT 613	AUDIBLE PEDESTRIAN PUSH BUTTON STATION AND SIGNS	(COT 613)	EA.	16
159	COT 613	AUDIBLE PEDESTRIAN PUSH BUTTON CONFIG/PROGRAMMING DEVICE	(COT 613)	EA.	3
160	COT 613	AUDIBLE PEDESTRIAN PUSH BUTTON CONTROL CARD/UNIT	(COT 613)	EA.	3
161	COT 614	LED ICC PEDESTRIAN HEAD (#33)	(COT 614)	EA.	16
162	COT 617	6" PEDESTRIAN PUSH BUTTON POLE		EA.	7
163	COT 617	10" PEDESTAL POLE		EA.	3
164	COT 625	REMOVAL OF TRAFFIC ITEMS	(COT 625)	EA.	1
165	COT 625	TRAFFIC SIGNAL MAINTENANCE		LS	1
166	COT 625	SIGNAL MODIFICATIONS FOR LANE CLOSURES		EA.	1
219	COT 611	20 #14 TRAFFIC SIGNAL ELECTRICAL CABLE		L.F.	640

EXISTING HORIZONTAL UTILITY LOCATIONS AND DEPTHS ARE APPROXIMATE AND MUST BE FIELD VERIFIED PRIOR TO CONSTRUCTION



**TRAFFIC PAY QUANTITIES AND NOTES**

ARTERIAL STREET REHABILITATION  
GILCREASE MUSEUM RD./N. 25th W. AVE. WIDENING  
PROJECT NOS. 2036W0001Z, 2036A0024Z

CITY OF TULSA, OKLAHOMA  
PUBLIC WORKS DEPARTMENT

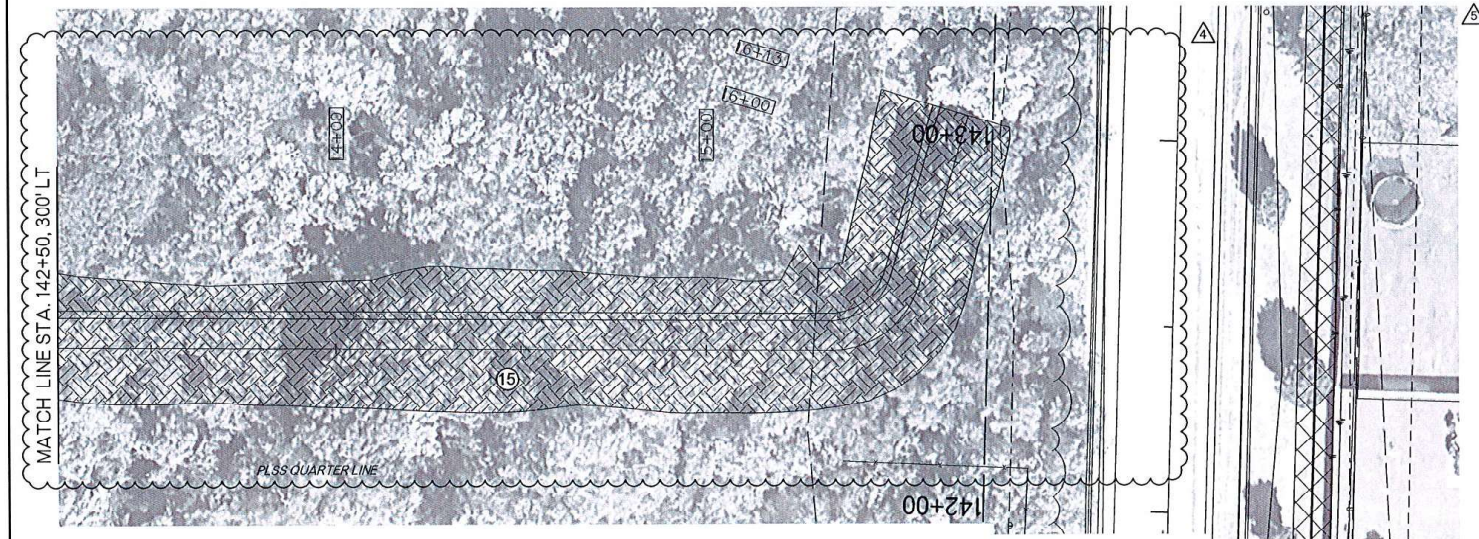
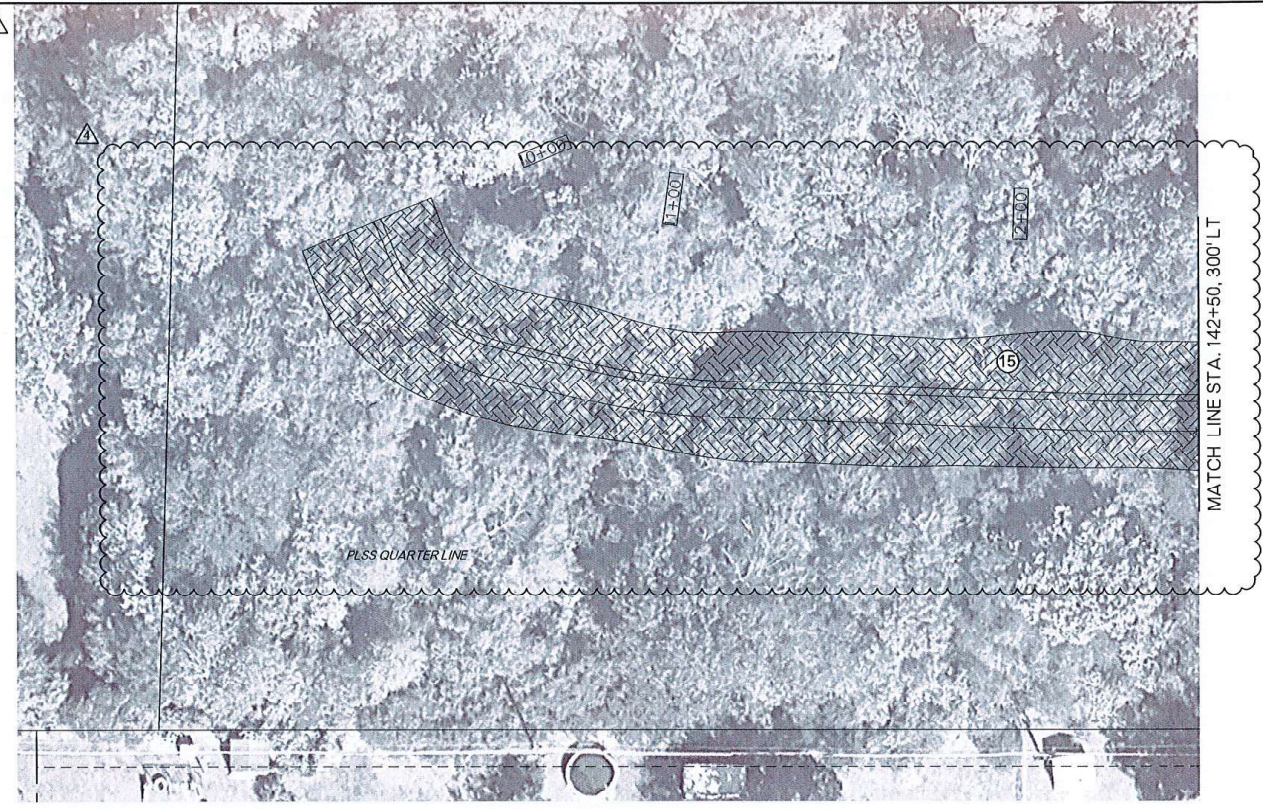
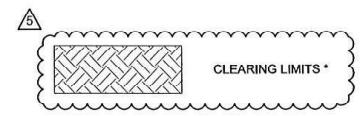
1111 N LEE AVE  
SUITE 206  
OKLAHOMA CITY, OK 73103  
PHONE: (405) 364-5127  
OK C.A. #5960 EXP. 06/30/2025

**LEE ENGINEERING**

PLAN SCALE	DRAWN	LEE	8/2025
	DESIGNED	LEE	8/2025
	SURVEY		
PROFILE SCALES:	PROJECT MGR.		
	LEAD ENGR.		
	FIELD MGR.		
HORIZONTAL: NA	RECOMMENDED:		
VERTICAL: NA	DESIGN MANAGER		
			CITY ENGINEER

NO.	DATE	REVISION DESCRIPTION	FILE:	DATE:
4	8/8/25	ADDENDUM NO. 4		
5	8/15/25	ADDENDUM NO. 5		

ATLAS PAGE NO. SHEET: 8 OF 288



\* NOTE: TOTAL AREA OF CLEARING SHOWN ON THIS PLAN SHEET IS APPROXIMATELY 0.50 ACRES

WATER DIVERSION BERM  
REMOVAL SHEET

ARTERIAL STREET REHABILITATION  
GILCREASE MUSEUM RD/N. 25th W. AVE. WIDENING  
PROJECT NOS. 2036W0001Z & 2036A0024Z

CITY OF TULSA, OKLAHOMA  
PUBLIC WORKS DEPARTMENT

PLANS AND ESTIMATES PREPARED BY:  
**POE & ASSOCIATES INC.**  
Tulsa, Oklahoma

LEGEND	
① REMOVE PAVEMENT	⑥ REMOVE INLET/PIPE
② REMOVE CURB & GUTTER	⑦ MILL & OVERLAY
③ REMOVE DRIVEWAY	⑧ PATCHING
④ REMOVE SIDEWALK	⑨ REMOVE GUARDRAIL
⑤ REMOVE MANHOLE	⑩ REMOVE MFTAI PIPE
⑪ REMOVE CURB RAMP	⑬ REMOVE CROSS DRAIN
⑫ REMOVE TRAFFIC ITEM	⑭ REMOVE HEADWALL
⑮ REMOVE TREE	⑯ TRIM TREE
— SIDEWALK REMOVAL	— PAVEMENT REMOVAL
— DRIVEWAY REMOVAL	— CURB & GUTTER REMOVAL

JARED T. BATES  
20681  
OKLAHOMA  
6/20/2025



REVISION	BY	DATE	PLAN SCALE:	DRAWN	POE	06/2023	APPROVED:
ADD/REMOVE - MOVED WATER DIVERSION BERM TO THE NORTH	JTB	06/07/2025	1" = 20'	DESIGNED	POE	06/2023	
ADD/REMOVE - MODIFIED AERIAL PHOTOS AND ADD/NOTES	JTB	08/14/2025		SURVEY			
			PROFILE SCALE:	PROJ. MGR.			
			HORIZONTAL:	LEAD ENGR.			
			1" = 20'	FIELD MGR.			
			VERTICAL:	RECOMMENDED:			
			1" = 5'	DESIGN MANAGER			CITY ENGINEER
			FILE: H121-1009	DRAWING: 21-1009 Water Diversion Berr-2025			DATE:
			ATLAS PAGE NO:	19, 20, 21, 42, 43, 74, 75			SHEET 62 OF 268 SHEETS