



PUBLIC WORKS
Engineering

DATE:
February 5, 2026

TO:
Plan Holders
Contractors

FROM:
Jenna Richardson
918-596-9637
jennarichardson@cityoftulsa.org

EMAIL TRANSMITTAL

ADDENDUM NO. 2

**PROJECT NO. 2436B0005Z-225, 2037B0225Z & 2036A0044Z
ARTERIAL STREET REHABILITATION & BRIDGE REHABILITATION:
E. PINE ST. FROM MINGO RD. TO GARNETT RD. & BRIDGE #225
OVER MINGO CREEK**

Number of pages:

All addenda to the contract documents should be denoted on the
last page of the Proposal in the space provided.

Thank you,
Contract Administration



PUBLIC WORKS
Engineering

DATE:
February 5, 2026

**ADDENDUM NO. 2
TO
PROJECT NO. 2436B0005Z-225, 2037B0225Z & 2036A0044Z
ARTERIAL STREET REHABILITATION & BRIDGE REHABILITATION:
E. PINE ST. FROM MINGO RD. TO GARNETT RD. &
BRIDGE #225 OVER MINGO CREEK**

This Addendum No. 2 consisting of two (2) items, submitted by City of Tulsa is hereby made a part of the Contract Documents to the same extent as though it were originally included therein and shall supersede anything contained in the Plans and Specifications with which it might conflict. **All addenda to the contract documents should be denoted on the last page of the Proposal in the space provided.**

This Addendum No. 2 consists of the following:

1. The attached documents list the detailed items that have been modified in Addendum No. 2. These documents shall be inclusive and apply to this project.
2. Delete the existing bid proposal form in its entirety and replace with the revised Bid Proposal located at: <https://www.cityoftulsa.org/government/departments/public-works/engineering-services/construction-bids/>. It is the Bidder's responsibility to download the revised Bid Proposal.

All other provisions of the Plans and Specifications shall remain in full force and effect.

CITY OF TULSA


Paul D. Zachary, P.E.
Deputy Director


HAS/MD/ML/JR

ADDENDUM NO. 2
TO
PROJECT NO. 2436B0005Z-225, 2037B0225Z, 2036A0044Z
ARTERIAL STREET REHABILITATION AND BRIDGE REHABILITATION
E. PINE ST. MINGO RD. TO GARNETT RD. & BRIDGE #225 OVER MINGO CREEK

Date: February 4, 2026

This Addendum No. 2 consists of 7 items and 4 Clarifications submitted by Benham Design, LLC, is hereby made a part of the contract Documents to the same extent as though it were originally included therein, and shall supersede anything contained in the Plans and Specifications with which it might conflict. **All addenda to the contract documents should be denoted on the last page of the Proposal in the space provided.**

This Addendum No. 2 consists of the following:

ITEMS

1. CLARIFICATION The contact plates used in the bearing assemblies for Spans 3, 4, and 5 are 1.5" thick. The overall dimensions of the contact plates are 9"x4"x1 ½" on Sheet 36, "BRIDGE 225 OVER MINGO CREEK SUPERSTRUCTURE DETAILS (8 OF 8)".
2. CLARIFICATION The pay item "Special Inlet Drain" has been added to the plans and proposal for payment of the scuppers (EACH). See Sheet 3, "PAY ITEMS & NOTES (1 OF 3)" and Sheet 5, "PAY ITEMS & NOTES (3 OF 3)".
3. CLARIFICATION Scuppers on the north side of the bridge have been removed and scuppers will only be installed on the south side of the bridge. See Sheet 27, "BRIDGE 225 OVER MINGO CREEK GENERAL PLAN AND ELEVATION (1 OF 2)" and Sheet 28, "BRIDGE 225 OVER MINGO CREEK GENERAL PLAN AND ELEVATION (2 OF 2)".
4. CLARIFICATION For Spans 3, 4, and 5 the schedule identified number of interior layers is accurate. Therefore the number of 1/8" laminates for these spans should be 7 instead of the schedule identified number of 9.
5. REMOVE Sheet 3, "PAY ITEMS & NOTES (1 OF 3)" from plan set and REPLACE with revised Sheet 3, "PAY ITEMS & NOTES (1 OF 3)".
6. REMOVE Sheet 5, "PAY ITEMS & NOTES (3 OF 3)" from plan set and REPLACE with revised Sheet 5, "PAY ITEMS & NOTES (3 OF 3)".
7. REMOVE Sheet 27, "BRIDGE 225 OVER MINGO CREEK GENERAL PLAN AND ELEVATION (1 OF 2)" from plan set and REPLACE with revised Sheet 27, "BRIDGE 225 OVER MINGO CREEK GENERAL PLAN AND ELEVATION (1 OF 2)".
8. REMOVE Sheet 28, "BRIDGE 225 OVER MINGO CREEK GENERAL PLAN AND ELEVATION (2 OF 2)" from plan set and REPLACE with revised Sheet 28, "BRIDGE 225 OVER MINGO CREEK GENERAL PLAN AND ELEVATION (2 OF 2)".
9. REMOVE Sheet 29, "BRIDGE 225 OVER MINGO CREEK SUPERSTRUCTURE DETAILS (1 OF 8)" from plan set and REPLACE with revised Sheet 29, "BRIDGE 225 OVER MINGO CREEK SUPERSTRUCTURE DETAILS (1 OF 8)".
10. REMOVE Sheet 32, "BRIDGE 225 OVER MINGO CREEK SUPERSTRUCTURE DETAILS (4 OF 8)" from plan set and REPLACE with revised Sheet 32, "BRIDGE 225 OVER MINGO CREEK SUPERSTRUCTURE DETAILS (4 OF 8)".
11. DELETE the existing Proposal in its entirety and REPLACE with the revised Proposal found at [www.cityoftulsa.org/government/departments/public-works/engineering-services/construction-bids/project no. 2436B0005Z-225](http://www.cityoftulsa.org/government/departments/public-works/engineering-services/construction-bids/project_no.2436B0005Z-225). It is the Bidders responsibility to download the revised Proposal onto their existing thumb drive.

All other provisions of the Plans and Specifications shall remain in full force and effect.

Benham Design, LLC

Karen Jones

Karen Jones, P.E., S.E.
Sr. Structural Engineer



Appended hereto and part of Addendum No. 2: Proposal; Sheet 3, "PAY ITEMS & NOTES (1 OF 3)"; Sheet 5, "PAY ITEMS & NOTES (3 OF 3)"; Sheet 27, "BRIDGE 225 OVER MINGO CREEK GENERAL PLAN AND ELEVATION (1 OF 2)"; Sheet 28, "BRIDGE 225 OVER MINGO CREEK GENERAL PLAN AND ELEVATION (2 OF 2)"; Sheet 29, "BRIDGE 225 OVER MINGO CREEK SUPERSTRUCTURE DETAILS (1 OF 8)"; Sheet 32, "BRIDGE 225 OVER MINGO CREEK SUPERSTRUCTURE DETAILS (4 OF 8)"

END ADDENDUM

ELECTRONIC BID PROPOSAL INSTRUCTIONS - EXCEL SPREADSHEET
PROJECT NO. 2036A0044Z | 2436B0005Z-225 | 2037B0225Z

Please read the following instructions carefully.

1. After opening this file re-save it as your company's name.
2. Open the BID FORM Sheet from the tabs below.
3. Input the unit price of the appropriate pay item in the cells highlighted in blue.
4. Review all data input and check calculations to ensure accuracy of Bid.
5. Print 1 hardcopy of the "PROPOSAL" tab, BID FORM and the "SIGNATURE PAGE" tab.
6. Complete and sign the "Signature Page" document.
6. Submit hardcopy and electronic disk with Contract Documents and Specifications for Bid opening date.

AGREEMENT FOR USING ELECTRONIC BID PROPOSAL

By and Between: Benham, (ENGINEER) and RECIPIENT. The enclosed electronic media is provided pursuant to your request and is for your limited use in connection with your submittal of Bid Proposal for Project No. 2036A0044Z | 2436B0005Z-225 | 2037B0225Z. In no event shall the information be used for any other purpose or be released to third parties without the written consent of the ENGINEER. In the event of a discrepancy between the hard copy and this electronic media at delivery or in the future, the hard copy shall govern. ENGINEER hereby disclaims any and all liability for the consequences from use of the electronic media and makes no warranty or guarantee of accuracy. RECIPIENT shall assume full responsibility for the uses and consequences of the electronic media. It is agreed that ENGINEER has and retains ownership of the electronic media. ENGINEER does not warrant or guarantee that the electronic data is compatible with RECIPIENT'S computer hardware or software, and ENGINEER'S responsibility for the electronic media is limited to replacement of defective media for a period of thirty (30) days after delivery to RECIPIENT. !!! By opening and using this FILE, You AGREE to these TERMS AND CONDITIONS!!!

PROPOSAL
ARTERIAL STREET REHABILITATION AND BRIDGE REHABILITATION
E. PINE ST. | MINGO RD. TO GARNETT RD. & BRIDGE #225 OVER MINGO CREEK
PROJECT NO. 2036A0044Z | 2436B0005Z-225 | 2037B0225Z

TO: HONORABLE MAYOR
CITY OF TULSA, OKLAHOMA

THE UNDERSIGNED BIDDER, having carefully examined the drawings, specifications, and other Contract Documents of the above project presently on file in the City Clerk, City of Tulsa Oklahoma:

CERTIFIES THAT he has inspected the site of the proposed work and has full knowledge of the extent and character of the work involved, construction difficulties that may be encountered, and materials necessary for construction, class and type of excavation, and all other factors affecting or which may be affected by the specified work; and

CERTIFIES THAT he has not entered into collusion with any other bidder or prospective bidder relative to the project and/or bid: and

HEREBY PROPOSES: to enter into a contract to provide all necessary labor, materials, equipment and tools to completely construct and finish all the work required by the Contract Documents hereto attached and other documents referred to therein: to complete said work within 250 calendar days after the work order is issued; and to accept in full payment therefore the amount set forth below for all work actually performed as computed by the Engineer as set forth in the Contract.

Basis of Award

THE BID PROPOSAL INCLUDES A ROADWAY, BRIDGE, AND TRAFFIC BASE BID.
IT SHOULD BE NOTED THAT THE LOWEST RESPONSIBLE TOTAL BID SHALL BE DETERMINED BY THE ROADWAY, BRIDGE, AND TRAFFIC BASE BID.

Note: - Item numbers omitted are not a part of the Contract.

BID FORM
ARTERIAL STREET REHABILITATION AND BRIDGE REHABILITATION
E. PINE ST. | MINGO RD. TO GARNETT RD. & BRIDGE #225 OVER MINGO CREEK
PROJECT NO. 2036A0044Z | 2436B0005Z-225 | 2037B0225Z

ITEM NUMBER	SPEC NO.	DESCRIPTION	UNIT	QUANTITY	DATA INPUT UNIT PRICE	TOTAL EACH ITEM
ROADWAY						
1	201(A)	CLEARING AND GRUBBING	AC	3		\$0.00
2	202(A)	UNCLASSIFIED EXCAVATION	CY	268		\$0.00
3	202(D)	UNCLASSIFIED BORROW	CY	25		\$0.00
4	220	SWPPP DOCUMENTATION AND MANAGEMENT	LSUM	1		\$0.00
5	230(A)	SOLID SLAB SODDING	SY	116		\$0.00
6	303(A)	AGGREGATE BASE TYPE A	CY	253		\$0.00
7	310(B)	SUBGRADE METHOD B	SY	499		\$0.00
8	325	SEPARATOR FABRIC	SY	1,031		\$0.00
9	409(A)	FABRIC REINFORCEMENT (TENSAR GP50)	SY	24,353		\$0.00
10	411(C)	SUPERPAVE, TYPE S4 (PG 70-28 OK) (INSOLUBLE)	TON	2,730		\$0.00
11	411(E)	SUPERPAVE, TYPE S6 (PG 70-28 OK)	TON	344		\$0.00
12	412	COLD MILLING PAVEMENT	SY	24,353		\$0.00
13	609(B)	COMBINED CURB & GUTTER (6" BARRIER)	LF	289		\$0.00
14	610(A)	4" CONCRETE SIDEWALK	SY	96		\$0.00
15	610(B)	6" CONCRETE DRIVEWAY (CLASS A)	SY	261		\$0.00
16	610(C)	6" CONCRETE DIVIDING STRIP	SY	137		\$0.00
17	610(I)	TACTILE WARNING DEVICE - NEW	SF	40		\$0.00
18	619(A)	REMOVAL OF STRUCTURES AND OBSTRUCTIONS	LSUM	1		\$0.00
19	619(B)	REMOVAL OF ASPHALT PAVEMENT	SY	238		\$0.00
20	619(B)	REMOVAL OF CONCRETE PAVEMENT	SY	80		\$0.00
21	619(B)	REMOVAL OF CONCRETE DRIVEWAY	SY	205		\$0.00
22	619(B)	REMOVAL OF CURB AND GUTTER	LF	44		\$0.00
23	619(B)	REMOVAL OF SIDEWALK	SY	18		\$0.00
24	619(B)	REMOVAL OF GUARDRAIL	LF	370		\$0.00
25	623(A)	BEAM GUARDRAIL W-BEAM SINGLE	LF	254		\$0.00
26	623(G)	GUARDRAIL END TREATMENT (31")	EA	5		\$0.00
27	623(I)	GUARDRAIL BRIDGE CONNECTION BEAM (31")	EA	4		\$0.00
28	641	MOBILIZATION	LSUM	1		\$0.00
29	642(B)	CONSTRUCTION STAKING LEVEL II	EA	1		\$0.00
30	805(A)	REMOVAL OF TRAFFIC ITEMS	EA	27		\$0.00
31	805(D)	REMOVE AND RESET SIGN	EA	1		\$0.00
32	855(A)	TRAFFIC STRIPE (PLASTIC) (4" WIDE)	LF	19,293		\$0.00
33	855(A)	TRAFFIC STRIPE (PLASTIC) (8" WIDE)	LF	450		\$0.00
34	855(A)	TRAFFIC STRIPE (PLASTIC) (24" WIDE)	LF	184		\$0.00
35	855(B)	TRAFFIC STRIPE (PLASTIC) (ARROWS)	LF	6		\$0.00
36	853	GUARDRAIL DELINEATORS (TYPE 2, CODE 1)	EA	13		\$0.00
37	857(C)	REMOVABLE PAVEMENT MARKING TAPE (4" WIDE)	LF	15,000		\$0.00
38	857(F)	PAVEMENT MARKING REMOVAL (TRAFFIC STRIPE)	LF	15,000		\$0.00
39	877(B)	DELIVER PORTABLE LONGITUDINAL BARRIER	LF	100		\$0.00
40	880(A)	ARROW DISPLAY	SD	500		\$0.00
41	880(B)	CONSTRUCTION SIGNS 0.00 TO 6.25 SF	SD	8,750		\$0.00
42	880(B)	CONSTRUCTION SIGNS 6.26 TO 15.99 SF	SD	2,500		\$0.00
43	880(B)	CONSTRUCTION SIGNS 16.00 AND UP	SD	5,000		\$0.00
44	880(C)	BARRICADES (TYPE III)	SD	2,500		\$0.00
45	880(E)	WARNING LIGHTS (TYPE A)	SD	8,000		\$0.00
46	880(E)	WARNING LIGHTS (TYPE C)	SD	17,500		\$0.00
47	880(F)	DRUMS	SD	17,500		\$0.00
48	880(I)	FLAGGER	FD	50		\$0.00
49	882(B)	REMOTE CONTROLLED CHANGEABLE MESSAGE SIGN	SD	1,000		\$0.00
50	COT 102	PROJECT SIGN (CITY OF TULSA)	EA	2		\$0.00
51	COT 202	QUICK SET FLOWABLE FILL	CY	25		\$0.00
52	COT 327	SAFETY FENCE	LF	2,500		\$0.00
53	COT 334	CONSTRUCTION AS-BUILT	LSUM	1		\$0.00
54	COT 335	CONTRACTOR QUALITY CONTROL	LSUM	1		\$0.00
55	SPECIAL	STABILIZED CONSTRUCTION ENTRANCE	EA	2		\$0.00
56	SPECIAL	TYPE I AC PATCH	CY	57		\$0.00
57	SPECIAL	TYPE I PCC PATCH	CY	8		\$0.00
58	SPECIAL	TYPE I APC PATCH	CY	25		\$0.00
59	SPECIAL	CURB RAMP	EA	4		\$0.00
60	SPECIAL	SIGNAGE FOR LOCAL BUSINESS ACCESS (BAS-1)	SD	5,750		\$0.00

BID FORM
ARTERIAL STREET REHABILITATION AND BRIDGE REHABILITATION
E. PINE ST. | MINGO RD. TO GARNETT RD. & BRIDGE #225 OVER MINGO CREEK
PROJECT NO. 2036A0044Z | 2436B0005Z-225 | 2037B0225Z

ITEM NUMBER	SPEC NO.	DESCRIPTION	UNIT	QUANTITY	DATA INPUT UNIT PRICE	TOTAL EACH ITEM
61	SPECIAL	URBAN RIGHT OF WAY RESTORATION	EA	1		\$0.00
62	SPECIAL	OWNERS ALLOWANCE	EA	25,000	\$1.00	\$25,000.00
ROADWAY TOTAL						\$25,000.00

ITEM NUMBER	SPEC NO.	DESCRIPTION	UNIT	QUANTITY	DATA INPUT UNIT PRICE	TOTAL EACH ITEM
BRIDGE #225						
63	501(G)	CLSM BACKFILL	CY	47		\$0.00
64	504(A)	APPROACH SLAB	SY	139		\$0.00
65	504(B)	SAW-CUT GROOVING	SY	892		\$0.00
66	504(D)	CONCRETE RAIL (TR4)	LF	665		\$0.00
67	504(F)	HANDRAILING	LF	333		\$0.00
68	506(A)	STRUCTURAL STEEL M270 GRADE 50W	LB	55,100		\$0.00
69	507(A)	WEATHERING STEEL FIXED BEARING ASSEMBLY	EA	5		\$0.00
70	507(B)	WEATHERING STL EXP. BEARING ASSEMBLY	EA	5		\$0.00
71	509(A)	CLASS AA CONCRETE	CY	282		\$0.00
72	509(C)	CLASS A CONCRETE, SMALL STRUCTURES	CY	2		\$0.00
73	511(B)	EPOXY COATED REINFORCING STEEL	LB	79,950		\$0.00
74	512	CLEANING BRIDGE SURFACES	SY	50		\$0.00
75	512(B)	PAINTING EXISTING STRUCTURES	LSUM	1		\$0.00
76	512(B)	COLLECTION AND HANDLING OF WASTE	SF	1,060		\$0.00
77	515(A)	WATER REPELLENT (VISUALLY INSPECTED)	SY	806		\$0.00
78	518(C)	RAPID CURE JOINT SEALANT	LF	128		\$0.00
79	518(D)	ELASTOMERIC MORTAR	CF	12		\$0.00
80	520(A)	PREPARATION OF CRACKS, ABOVE WATER	LF	101		\$0.00
81	520(C)	EPOXY RESIN, ABOVE WATER	GAL	1		\$0.00
82	521(A)	PNEUMATICALLY PLACED MORTAR	SY	36		\$0.00
83	523(A)	SEALER CRACK PREPARATION	LF	63		\$0.00
84	523(B)	SEALER RESIN	GAL	1		\$0.00
85	535	CORROSION INHIBITOR(SURFACE APPLIED)	SY	47		\$0.00
86	611(G)	SPECIAL INLET DRAIN	EA	15		\$0.00
87	619(B)	REMOVAL OF BRIDGE ITEMS	LSUM	1		\$0.00
BRIDGE #225 TOTAL						\$0.00

ITEM NUMBER	SPEC NO.	DESCRIPTION	UNIT	QUANTITY	DATA INPUT UNIT PRICE	TOTAL EACH ITEM
TRAFFIC						
88	COT 601	PULL BOX SIZE I	EA	1		\$0.00
89	COT 601	PULL BOX SIZE II	EA	11		\$0.00
90	COT 601	PULL BOX SIZE III	EA	2		\$0.00
91	COT 602	2" SCH 40 PVC CONDUIT TRENCHED	LF	80		\$0.00
92	COT 602	3" SCH 40 PVC CONDUIT TRENCHED	LF	21		\$0.00
93	COT 602	(2)-3" SCH 40 PVC CONDUIT TRENCHED	LF	454		\$0.00
94	COT 602	(4)-3" SCH 40 PVC CONDUIT TRENCHED	LF	25		\$0.00
95	COT 602	2" HDPE SCH 40 CONDUIT (DIRECTIONAL BORE)	LF	50		\$0.00
96	COT 602	(2)-3" HDPE SCH 40 CONDUIT (DIRECTIONAL BORE)	LF	800		\$0.00
97	COT 604	6'X6' LOOP DETECTOR	EA	2		\$0.00
98	COT 604	LOOP LEAD-IN WIRE	LF	35		\$0.00
99	COT 608	GROUND SIGN	SF	346		\$0.00
100	COT 608	1-1/2" SIGN POST	LF	84		\$0.00
101	COT 608	1-3/4" SIGN POST	LF	430		\$0.00
102	COT 608	2" SIGN POST	LF	129		\$0.00
103	COT 620	VIDEO DETECTION SYSTEM	EA	2		\$0.00
104	COT 611	2#14 SHIELDED ELECTRICAL CONDUCTOR WITH GROUND	LF	1,780		\$0.00
105	COT 611	2#14 SHIELDED ELECTRICAL CONDUCTOR	LF	100		\$0.00
106	COT 611	4#14 TRAFFIC SIGNAL ELECTRIC CABLE	LF	650		\$0.00
107	COT 611	7#14 TRAFFIC SIGNAL ELECTRIC CABLE	LF	1,500		\$0.00
108	COT 611	20#14 TRAFFIC SIGNAL ELECTRIC CABLE	LF	1,000		\$0.00
109	COT 611	GREEN #12 THHN ELECTRICAL CONDUCTOR	LF	1,500		\$0.00
110	COT 611	GREEN #6 THHN ELECTRICAL CONDUCTOR	LF	1,000		\$0.00
111	COT 626	TRAFFIC SIGNAL MAINTENANCE	HR	16		\$0.00
112	COT 626	SIGNAL MODIFICATIONS FOR LANE CLOSURES (PER SIGNALIZED INTERSECTION)	EA	3		\$0.00
TRAFFIC TOTAL						\$0.00

SUMMARY SHEET
ARTERIAL STREET REHABILITATION AND BRIDGE REHABILITATION
E. PINE ST. | MINGO RD. TO GARNETT RD. & BRIDGE #225 OVER MINGO CREEK
PROJECT NO. 2036A0044Z | 2436B0005Z-225 | 2037B0225Z

ROADWAY	\$25,000.00
BRIDGE #225	\$0.00
TRAFFIC	\$0.00
TOTAL BID (Roadway, Bridge, and Traffic Base Bid)	<u>\$25,000.00</u>

SIGNATURE PAGE
ARTERIAL STREET REHABILITATION AND BRIDGE REHABILITATION
E. PINE ST. | MINGO RD. TO GARNETT RD. & BRIDGE #225 OVER MINGO CREEK
PROJECT NO. 2036A0044Z | 2436B0005Z-225 | 2037B0225Z

TOTAL BID (Roadway, Bridge, and Traffic Base Bid)

\$25,000.00

Figures

Enclosed is a () Bidder's Surety Bond, () Certified Check, () Cashier's Check for

Dollars (\$ _____)

Figures

which the City of Tulsa may retain or recover as liquidated damages in the event that the undersigned fails to enter into contract for the work covered by this proposal., provided the Contract is awarded to the undersigned within thirty (30) days, or within ninety (90) days if Federal funds are utilized, from the date fixed for opening of bids and the undersigned fails to execute said Contract and furnish the required bonds and other requirements as called for in these Contract Documents within thirty (30) days after award of Contract.

Dated at Tulsa, Oklahoma, this _____ day of _____, 20__.

Respectfully submitted,

(Complete legal name of company)

(State of Organization)

By: _____

Title: _____

ATTEST: _____

Title: Corporate Secretary

(SEAL)

Address: _____

Telephone Number: _____

Fax Number: _____

The undersigned acknowledge receipt of the following Addenda (give number and date of each):

FOR CONTRACTOR USE
ARTERIAL STREET REHABILITATION AND BRIDGE REHABILITATION
E. PINE ST. | MINGO RD. TO GARNETT RD. & BRIDGE #225 OVER MINGO CREEK
PROJECT NO. 2036A0044Z | 2436B0005Z-225 | 2037B0225Z

ITEM NUMBER	SPEC NO.	DESCRIPTION	UNIT	QUANTITY
ROADWAY				
1	201(A)	CLEARING AND GRUBBING	AC	3
2	202(A)	UNCLASSIFIED EXCAVATION	CY	268
3	202(D)	UNCLASSIFIED BORROW	CY	25
4	220	SWPPP DOCUMENTATION AND MANAGEMENT	LSUM	1
5	230(A)	SOLID SLAB SODDING	SY	116
6	303(A)	AGGREGATE BASE TYPE A	CY	253
7	310(B)	SUBGRADE METHOD B	SY	499
8	325	SEPARATOR FABRIC	SY	1,031
9	409(A)	FABRIC REINFORCEMENT (TENSAR GP50)	SY	24,353
10	411(C)	SUPERPAVE, TYPE S4 (PG 70-28 OK) (INSOLUBLE)	TON	2,730
11	411(E)	SUPERPAVE, TYPE S6 (PG 70-28 OK)	TON	344
12	412	COLD MILLING PAVEMENT	SY	24,353
13	609(B)	COMBINED CURB & GUTTER (6" BARRIER)	LF	289
14	610(A)	4" CONCRETE SIDEWALK	SY	96
15	610(B)	6" CONCRETE DRIVEWAY (CLASS A)	SY	261
16	610(C)	6" CONCRETE DIVIDING STRIP	SY	137
17	610(I)	TACTILE WARNING DEVICE - NEW	SF	40
18	619(A)	REMOVAL OF STRUCTURES AND OBSTRUCTIONS	LSUM	1
19	619(B)	REMOVAL OF ASPHALT PAVEMENT	SY	238
20	619(B)	REMOVAL OF CONCRETE PAVEMENT	SY	80
21	619(B)	REMOVAL OF CONCRETE DRIVEWAY	SY	205
22	619(B)	REMOVAL OF CURB AND GUTTER	LF	44
23	619(B)	REMOVAL OF SIDEWALK	SY	18
24	619(B)	REMOVAL OF GUARDRAIL	LF	370
25	623(A)	BEAM GUARDRAIL W-BEAM SINGLE	LF	254
26	623(G)	GUARDRAIL END TREATMENT (31")	EA	5
27	623(I)	GUARDRAIL BRIDGE CONN-THREE BEAM (31")	EA	4
28	641	MOBILIZATION	LSUM	1
29	642(B)	CONSTRUCTION STAKING LEVEL II	EA	1
30	805(A)	REMOVAL OF TRAFFIC ITEMS	EA	27
31	805(D)	REMOVE AND RESET SIGN	EA	1
32	855(A)	TRAFFIC STRIPE (PLASTIC) (4" WIDE)	LF	19,293
33	855(A)	TRAFFIC STRIPE (PLASTIC) (8" WIDE)	LF	450
34	855(A)	TRAFFIC STRIPE (PLASTIC) (24" WIDE)	LF	184
35	855(B)	TRAFFIC STRIPE (PLASTIC) (ARROWS)	LF	6
36	853	GUARDRAIL DELINEATORS (TYPE 2, CODE 1)	EA	13
37	857(C)	REMOVABLE PAVEMENT MARKING TAPE (4" WIDE)	LF	15,000
38	857(F)	PAVEMENT MARKING REMOVAL (TRAFFIC STRIPE)	LF	15,000
39	877(B)	DELIVER PORTABLE LONGITUDINAL BARRIER	LF	100
40	880(A)	ARROW DISPLAY	SD	500
41	880(B)	CONSTRUCTION SIGNS 0.00 TO 6.25 SF	SD	8,750
42	880(B)	CONSTRUCTION SIGNS 6.26 TO 15.99 SF	SD	2,500
43	880(B)	CONSTRUCTION SIGNS 16.00 AND UP	SD	5,000
44	880(C)	BARRICADES (TYPE III)	SD	2,500
45	880(E)	WARNING LIGHTS (TYPE A)	SD	8,000
46	880(E)	WARNING LIGHTS (TYPE C)	SD	17,500
47	880(F)	DRUMS	SD	17,500
48	880(I)	FLAGGER	FD	50
49	882(B)	REMOTE CONTROLLED CHANGEABLE MESSAGE SIGN	SD	1,000
50	COT 102	PROJECT SIGN (CITY OF TULSA)	EA	2
51	COT 202	QUICK SET FLOWABLE FILL	CY	25
52	COT 327	SAFETY FENCE	LF	2,500
53	COT 334	CONSTRUCTION AS-BUILT	LSUM	1
54	COT 335	CONTRACTOR QUALITY CONTROL	LSUM	1
55	SPECIAL	STABILIZED CONSTRUCTION ENTRANCE	EA	2

56	SPECIAL	TYPE I AC PATCH	CY	57
57	SPECIAL	TYPE I PCC PATCH	CY	8
58	SPECIAL	TYPE I APC PATCH	CY	25
59	SPECIAL	CURB RAMP	EA	4
60	SPECIAL	SIGNAGE FOR LOCAL BUSINESS ACCESS (BAS-1)	SD	5,750
61	SPECIAL	URBAN RIGHT OF WAY RESTORATION	EA	1
62	SPECIAL	OWNERS ALLOWANCE	EA	25,000

ITEM NUMBER	SPEC NO.	DESCRIPTION	UNIT	QUANTITY
BRIDGE #225				
63	501(G)	CLSM BACKFILL	CY	47
64	504(A)	APPROACH SLAB	SY	139
65	504(B)	SAW-CUT GROOVING	SY	892
66	504(D)	CONCRETE RAIL (TR4)	LF	665
67	504(F)	HANDRAILING	LF	333
68	506(A)	STRUCTURAL STEEL M270 GRADE 50W	LB	55,100
69	507(A)	WEATHERING STEEL FIXED BEARING ASSEMBLY	EA	5
70	507(B)	WEATHERING STL EXP. BEARING ASSEMBLY	EA	5
71	509(A)	CLASS AA CONCRETE	CY	282
72	509(C)	CLASS A CONCRETE, SMALL STRUCTURES	CY	2
73	511(B)	EPOXY COATED REINFORCING STEEL	LB	79,950
74	512	CLEANING BRIDGE SURFACES	SY	50
75	512(B)	PAINTING EXISTING STRUCTURES	LSUM	1
76	512(B)	COLLECTION AND HANDLING OF WASTE	SF	1,060
77	515(A)	WATER REPELLENT (VISUALLY INSPECTED)	SY	806
78	518(C)	RAPID CURE JOINT SEALANT	LF	128
79	518(D)	ELASTOMERIC MORTAR	CF	12
80	520(A)	PREPARATION OF CRACKS, ABOVE WATER	LF	101
81	520(C)	EPOXY RESIN, ABOVE WATER	GAL	1
82	521(A)	PNEUMATICALLY PLACED MORTAR	SY	36
83	523(A)	SEALER CRACK PREPARATION	LF	63
84	523(B)	SEALER RESIN	GAL	1
85	535	CORROSION INHIBITOR(SURFACE APPLIED)	SY	47
86	611(G)	SPECIAL INLET DRAIN	EA	15
87	619(B)	REMOVAL OF BRIDGE ITEMS	LSUM	1

ITEM NUMBER	SPEC NO.	DESCRIPTION	UNIT	QUANTITY
TRAFFIC				
88	COT 601	PULL BOX SIZE I	EA	1
89	COT 601	PULL BOX SIZE II	EA	11
90	COT 601	PULL BOX SIZE III	EA	2
91	COT602	2" SCH 40 PVC CONDUIT TRENCHED	LF	80
92	COT602	3" SCH 40 PVC CONDUIT TRENCHED	LF	21
93	COT602	(2)-3" SCH 40 PVC CONDUIT TRENCHED	LF	454
94	COT602	(4)-3" SCH 40 PVC CONDUIT TRENCHED	LF	25
95	COT602	2" HDPE SCH 40 CONDUIT (DIRECTIONAL BORE)	LF	50
96	COT602	(2)-3" HDPE SCH 40 CONDUIT (DIRECTIONAL BORE)	LF	800
97	COT 604	6'X6' LOOP DETECTOR	EA	2
98	COT 604	LOOP LEAD-IN WIRE	LF	35
99	COT 608	GROUND SIGN	SF	346
100	COT 608	1-1/2" SIGN POST	LF	84
101	COT 608	1-3/4" SIGN POST	LF	430
102	COT 608	2" SIGN POST	LF	129
103	COT 620	VIDEO DETECTION SYSTEM	EA	2
104	COT 611	2#14 SHIELDED ELECTRICAL CONDUCTOR WITH GROUND	LF	1,780
105	COT 611	2#14 SHIELDED ELECTRICAL CONDUCTOR	LF	100
106	COT 611	4#14 TRAFFIC SIGNAL ELECTRIC CABLE	LF	650
107	COT 611	7#14 TRAFFIC SIGNAL ELECTRIC CABLE	LF	1,500
108	COT 611	20#14 TRAFFIC SIGNAL ELECTRIC CABLE	LF	1,000
109	COT 611	GREEN #12 THHN ELECTRICAL CONDUCTOR	LF	1,500
110	COT 611	GREEN #6 THHN ELECTRICAL CONDUCTOR	LF	1,000
111	COT 626	TRAFFIC SIGNAL MAINTENANCE	HR	16
112	COT 626	SIGNAL MODIFICATIONS FOR LANE CLOSURES (PER SIGNALIZED INTERSECTION)	EA	3

P:\140_Civil\1400405 COT Pine St. Bridge Rehab\21Design\Working\Civil\07OpenRoads\1400405_COT_PineSlugs\Sheets\1400405-C-Pay Items 01.dgn
10/30/25 AM
2/4/2026

ROADWAY					
ITEM	SPEC. NO.	DESCRIPTION	PAY ITEM NOTE	UNIT	TOTAL
1	201(A)	CLEARING AND GRUBBING	(E-1, 2)	AC	3
2	202(A)	UNCLASSIFIED EXCAVATION	(E-3, 4) (R-1) (105, 106)	CY	268
3	202(D)	UNCLASSIFIED BORROW	(G-1) (110)	CY	25
4	220	SWPPP DOCUMENTATION AND MANAGEMENT	(E-6, 7, 8, 9)	LSUM	1
5	230(A)	SOLID SLAB SODDING	(E-10, 11)	SY	116
6	303(A)	AGGREGATE BASE TYPE A	(S-1, 2) (104)	CY	253
7	310(B)	SUBGRADE METHOD B	(G-1)	SY	499
8	325	SEPARATOR FABRIC	(S-3)	SY	1,031
9	409(A)	FABRIC REINFORCEMENT (TENSAR GP50)	(S-4)	SY	24,353
10	411(C)	SUPERPAVE, TYPE S4 (PG 70-28 OK) (INSOLUBLE)	(S-5, 6, 7, 8, 23)	TON	2,730
11	411(E)	SUPERPAVE, TYPE S6 (PG 70-28 OK)	(S-5, 6, 7, 8, 23) (G-1)	TON	344
12	412	COLD MILLING PAVEMENT	(S-9, 22, 23)	SY	24,353
13	609(B)	COMBINED CURB & GUTTER (6" BARRIER)	(S-12, 13, 15, 16) (G-1) (111)	LF	289
14	610(A)	4" CONCRETE SIDEWALK	(S-12, 13, 16, 17)	SY	96
15	610(B)	6" CONCRETE DRIVEWAY (CLASS A)	(S-12, 13, 16, 17, 23)	SY	261
16	610(C)	6" CONCRETE DIVIDING STRIP	(S-12, 13)	SY	137
17	610(I)	TACTILE WARNING DEVICE - NEW		SF	40
18	619(A)	REMOVAL OF STRUCTURES AND OBSTRUCTIONS	(R-1, 2, 3, 4, 5)	LSUM	1
19	619(B)	REMOVAL OF ASPHALT PAVEMENT	(R-1, 2, 5, 6)	SY	238
20	619(B)	REMOVAL OF CONCRETE PAVEMENT	(R-1, 2, 5, 6)	SY	80
21	619(B)	REMOVAL OF CONCRETE DRIVEWAY	(S-22) (R-1, 2, 5, 6)	SY	205
22	619(B)	REMOVAL OF CURB AND GUTTER	(R-1, 2, 5, 6)	LF	44
23	619(B)	REMOVAL OF SIDEWALK	(R-1, 2, 5, 6)	SY	18
24	619(B)	REMOVAL OF GUARDRAIL	(R-2, 4, 5) (112)	LF	370
25	623(A)	BEAM GUARDRAIL W-BEAM SINGLE		EA	254
26	623(G)	GUARDRAIL END TREATMENT (31")		EA	5
27	623(I)	GUARDRAIL BRIDGE CONN-THRU BEAM (31")		EA	4
28	641	MOBILIZATION	(G-2) (101, 102)	LSUM	1
29	642(B)	CONSTRUCTION STAKING LEVEL II	(G-3, 4)	EA	1
30	805(A)	REMOVAL OF TRAFFIC ITEMS	(T-1, 9)	EA	27
31	805(D)	REMOVE AND RESET SIGN		EA	1
32	855(A)	TRAFFIC STRIPE (PLASTIC) (4" WDE)	(T-3)	LF	19,293
33	855(A)	TRAFFIC STRIPE (PLASTIC) (8" WDE)	(T-3)	LF	450
34	855(A)	TRAFFIC STRIPE (PLASTIC) (24" WDE)	(T-3)	LF	184
35	855(B)	TRAFFIC STRIPE (PLASTIC) (ARROWS)	(T-3)	LF	6
36	853	GUARDRAIL DELINEATORS (TYPE 2, CODE 1)		EA	13
37	857(C)	REMOVABLE PAVEMENT MARKING TAPE (4" WDE)		LF	15,000
38	857(F)	PAVEMENT MARKING REMOVAL (TRAFFIC STRIPE)		LF	15,000
39	877(B)	DELIVER PORTABLE LONGITUDINAL BARRIER		LF	100
40	880(A)	ARROW DISPLAY	(T-4) (201)	SD	500
41	880(B)	CONSTRUCTION SIGNS 0.00 TO 6.25 SF	(T-2, 4, 5) (201, 202)	SD	8,750
42	880(B)	CONSTRUCTION SIGNS 6.26 TO 15.99 SF	(T-2, 4, 5) (201, 202)	SD	2,500
43	880(B)	CONSTRUCTION SIGNS 16.00 AND UP	(T-2, 4, 5) (201, 202)	SD	5,000
44	880(C)	BARRICADES (TYPE II)	(T-2, 4, 5) (201)	SD	2,500
45	880(E)	WARNING LIGHTS (TYPE A)	(T-4, 5) (201)	SD	8,000
46	880(E)	WARNING LIGHTS (TYPE C)	(T-4, 5) (201)	SD	17,500
47	880(F)	DRUMS	(T-2, 4, 5) (201)	SD	17,500
48	880(I)	FLAGGER	(T-6)	FD	50
49	882(B)	REMOTE CONTROLLED CHANGEABLE MESSAGE SIGN	(T-4) (201)	SD	1,000
50	COT 102	PROJECT SIGN (CITY OF TULSA)	(T-7) (204)	EA	2
51	COT 202	QUICK SET FLOWABLE FILL	(S-1) (G-1)	CY	25
52	COT 327	SAFETY FENCE	(203)	LF	2,500
53	COT 334	CONSTRUCTION AS-BUILT		LSUM	1
54	COT 335	CONTRACTOR QUALITY CONTROL		LSUM	1
55	SPECIAL	STABILIZED CONSTRUCTION ENTRANCE	(G-1)	EA	2
56	SPECIAL	TYPE I AC PATCH	(S-21) (G-1)	CY	57
57	SPECIAL	TYPE I PCC PATCH	(S-21) (G-1) (103)	CY	8
58	SPECIAL	TYPE I APC PATCH	(S-21) (G-1) (103)	CY	25
59	SPECIAL	CURB RAMP		EA	4
60	SPECIAL	SIGNAGE FOR LOCAL BUSINESS ACCESS (BAS-1)	(T-4) (205)	SD	5,750
61	SPECIAL	URBAN RIGHT OF WAY RESTORATION	(G-5, 6, 7, 9, 10) (107, 108, 109)	EA	1
62	SPECIAL	OWNERS ALLOWANCE		EA	25,000

BRIDGE #225					
ITEM	SPEC. NO.	DESCRIPTION	PAY ITEM NOTE	UNIT	TOTAL
63	501(G)	CLSM BACKFILL		CY	47
64	504(A)	APPROACH SLAB	(S-12, 301, 306, 307)	SY	139
65	504(B)	SAW-CUT GROOVING		SY	892
66	504(D)	CONCRETE RAIL (TR4)	(S-12)	LF	865
67	504(F)	HANDRAILING		LF	333
68	508(A)	STRUCTURAL STEEL M270 GRADE 50W		LB	55,100
69	507(A)	WEATHERING STEEL FIXED BEARING ASSEMBLY		EA	5
70	507(B)	WEATHERING STL EXP. BEARING ASSEMBLY		EA	5
71	509(A)	CLASS AA CONCRETE	(S-12)	CY	282
72	509(C)	CLASS A CONCRETE, SMALL STRUCTURES	(S-12, 301, 305)	CY	2
73	511(B)	EPOXY COATED REINFORCING STEEL		LB	79,950
74	512	CLEANING BRIDGE SURFACES		SY	50
75	512(B)	PAINTING EXISTING STRUCTURES		LSUM	1
76	512(B)	COLLECTION AND HANDLING OF WASTE		SF	1,060
77	515(A)	WATER REPELLENT (VISUALLY INSPECTED)		SY	806
78	518(C)	RAPID CURE JOINT SEALANT		LF	128
79	518(D)	ELASTOMERIC MORTAR		CF	12
80	520(A)	PREPARATION OF CRACKS, ABOVE WATER	(302, 303)	LF	101
81	520(C)	EPOXY RESIN, ABOVE WATER	(302)	GAL	1
82	521(A)	PNEUMATICALLY PLACED MORTAR		SY	36
83	523(A)	SEALER CRACK PREPARATION	(301)	LF	63
84	523(B)	SEALER RESIN	(301)	GAL	1
85	535	CORROSION INHIBITOR (SURFACE APPLIED)		SY	47
86	611(G)	SPECIAL INLET DRAIN	(308)	EA	15
87	619(B)	REMOVAL OF BRIDGE ITEMS	(R-1, 304)	LSUM	1

TRAFFIC					
ITEM	SPEC. NO.	DESCRIPTION	PAY ITEM NOTE	UNIT	TOTAL
88	COT 601	PULL BOX SIZE I		EA	1
89	COT 601	PULL BOX SIZE II		EA	11
90	COT 601	PULL BOX SIZE III		EA	2
91	COT602	2" SCH 40 PVC CONDUIT TRENCHED	(T-8)	LF	80
92	COT602	3" SCH 40 PVC CONDUIT TRENCHED	(T-8)	LF	21
93	COT602	(2)-3" SCH 40 PVC CONDUIT TRENCHED	(T-8)	LF	454
94	COT602	(4)-3" SCH 40 PVC CONDUIT TRENCHED	(T-8)	LF	25
95	COT602	2" HDPE SCH 40 CONDUIT (DIRECTIONAL BORE)	(T-8)	LF	50
96	COT602	(2)-3" HDPE SCH 40 CONDUIT (DIRECTIONAL BORE)	(T-8)	LF	800
97	COT 604	6'X6' LOOP DETECTOR		EA	2
98	COT 604	LOOP LEAD-IN WIRE		LF	35
99	COT 608	GROUND SIGN	(113)	SF	346
100	COT 608	1-1/2" SIGN POST	(113)	LF	84
101	COT 608	1-3/4" SIGN POST	(113)	LF	430
102	COT 608	2" SIGN POST	(113)	LF	129
103	COT 620	VIDEO DETECTION SYSTEM	(T-10)	EA	2
104	COT 611	2#14 SHIELDED ELECTRICAL CONDUCTOR WITH GROUND		LF	1,780
105	COT 611	2#14 SHIELDED ELECTRICAL CONDUCTOR		LF	100
106	COT 611	4#14 TRAFFIC SIGNAL ELECTRIC CABLE		LF	650
107	COT 611	7#14 TRAFFIC SIGNAL ELECTRIC CABLE		LF	1,500
108	COT 611	20#14 TRAFFIC SIGNAL ELECTRIC CABLE		LF	1,000
109	COT 611	GREEN #12 THHN ELECTRICAL CONDUCTOR		LF	1,500
110	COT 611	GREEN #6 THHN ELECTRICAL CONDUCTOR		LF	1,000
111	COT 626	TRAFFIC SIGNAL MAINTENANCE		HR	16
112	COT 626	SIGNAL MODIFICATIONS FOR LANE CLOSURES (PER SIGNALIZED INTERSECTION)		EA	3

ITEMS LISTED OR SHOWN ON DRAWINGS AND/OR DESCRIBED IN THE SPECIFICATIONS THAT ARE NOT INCLUDED AS A SEPARATE PAY ITEM QUANTITY SHALL BE CONSIDERED INCIDENTAL AND THE COST SHALL BE INCLUDED IN THE PRICE BID FOR OTHER ITEMS. THE PRICE BID FOR ALL WORK SHALL INCLUDE ALL MATERIALS, EQUIPMENT, LABOR, INCIDENTALS, AND ALL OTHER REQUIRED ITEMS TO COMPLETE THE WORK AS SHOWN ON PLANS AND SPECIFICATIONS.



PAY ITEMS & NOTES (1 OF 3)	
ARTERIAL STREET REHABILITATION E. PINE ST. (MINGO RD. TO GARNETT RD.) & BRIDGE #225 OVER MINGO CREEK PROJECT NO. 2436B005Z-225, 2037B0225Z, 2036A0044Z	
CITY OF TULSA, OKLAHOMA PUBLIC WORKS DEPARTMENT	
 Benham Design, LLC 15 W 6th St, Suite 900 Tulsa, Oklahoma 74119 (918) 492-1600	
REVISION	BY DATE
△ REVISED QUANTITIES	KE 01/23/26
△ ADD. PAY ITEM & REV'D QTY.	KSJ 2/4/26
PLAN SCALE	DRAWN
DESIGNED	ES 10/25
1" = NA	KLE 10/25
SURVEY	RDL 10/25
PROFILE SCALE	FIELD MGR
HORIZONTAL	1" = NA
PROJECT MGR	
LEAD ENGR	
RECOMMENDED	
1" = NA	
DESIGN MANAGER	
FILE: 1400405-C-Pay Items 01.dgn	
ATLAS PAGE NO.: 172, 173	
APPROVED: CITY ENGINEER DATE: OCTOBER 2025 SHEET 3 OF 54 SHEETS	



P:\140_Civil\1400405 COT Pine St. Bridge Rehab\2\Design\Working\Civil\1400405-COT_PineSt.dgn

10:39:42 AM

2/4/2026

GENERAL PAY ITEM NOTES (11/14/2018)

- G-1 LOCATIONS TO BE DETERMINED IN THE FIELD AND WORK TO BE PERFORMED AT THE DIRECTION OF THE FIELD ENGINEER. QUANTITY IS ESTIMATED AND MAY BE OMITTED IN ITS ENTIRETY.
- G-2 MAXIMUM OVERALL DOLLAR AMOUNT AND SCHEDULE OF PAYMENTS SHALL BE IN ACCORDANCE SECTION 641 OF THE OKLAHOMA DEPARTMENT OF TRANSPORTATION STANDARD SPECIFICATIONS, CURRENT EDITION. EXCLUDES MOBILIZATION FOR WATERLINE WORK.
- G-3 CONSTRUCTION STAKING SHALL INCLUDE SURVEYING AND THE FURNISHING, PLACING, AND MAINTAINING OF THE CONSTRUCTION LAYOUT STAKES NECESSARY FOR THE PROPER COMPLETION AND INSPECTION OF THE ENTIRE PROJECT.
- G-4 THE COST TO REPLACE REMOVED OR DAMAGED SECTION CORNERS AND ALL OTHER PERMANENT RIGHT OF WAY MARKERS SHALL BE INCLUDED IN THE PRICE BID FOR THIS ITEM. NO ADDITIONAL PAYMENT WILL BE MADE.
- G-5 CONTRACTOR SHALL REPAIR ANY IRRIGATION SYSTEMS DAMAGED OR REQUIRING RELOCATION DURING THE CONSTRUCTION OF THIS PROJECT TO THE SATISFACTION OF THE PROPERTY OWNER AND CITY ARBORIST. COST SHALL BE INCLUDED IN THE PRICE BID.
- G-6 ALL HOUSE NUMBERS SHALL BE REPLACED/ REESTABLISHED THROUGHOUT PROJECT LIMITS. COST TO BE INCLUDED IN URBAN RIGHT OF WAY RESTORATION. CONTRACTOR SHALL REESTABLISH DRAINS, ROOF DRAINS AND OTHER DRAINAGE THROUGH THE CURBS IN ACCORDANCE WITH CITY OF TULSA STANDARD 758. NO NEW CURB OUTLETS SHALL BE CONSTRUCTED WITHOUT APPROVAL OF THE ENGINEER.
- G-7 AN INTERNATIONAL SOCIETY OF ARBORICULTURE (ISA) CERTIFIED ARBORIST SHALL OVERSEE ALL PLANTINGS AND/OR REMOVAL OF TREES. CONTACT CITY ARBORIST TO ACCEPT FINAL PLANTINGS. CONTACT #: 918-596-2548
- G-8 NOT USED.
- G-9 CONTRACTOR SHALL COORDINATE WITH HOMEOWNERS TO RESET ALL PAVERS, LANDSCAPE STONE, PRIVATE SIDEWALKS AND FENCES THAT ARE DISTURBED DURING CONSTRUCTION OPERATIONS. ALL MATERIALS, LABOR, AND EQUIPMENT REQUIRED FOR RESETTING OF SUCH ITEMS IS TO BE INCLUDED IN PRICE BID FOR URBAN RIGHT OF WAY RESTORATION.
- G-10 PAY ITEM INCLUDES ALL MOVING WITHIN THE RIGHT-OF-WAY AS DIRECTED DURING CONSTRUCTION.

ROADWAY PAY ITEM NOTES - PROJECT SPECIFIC (10/31/2025)

- 101 CONTRACTOR SHALL BE RESPONSIBLE FOR PROVIDING A STAGING AREA.
- 102 SHALL INCLUDE ALL LABOR, EQUIPMENT, AND ASSOCIATED COSTS TO COMPLETE THE REQUIRED BID ITEM TO THE FULL EXTENT REQUIRED TO COMPLETE THE WORK DESCRIBED IN THE CONTRACT DOCUMENTS.
- 103 FULL PANEL REPLACEMENT SHALL HAVE DOWEL JOINTED TRANSVERSE JOINTS PER ODOT STD. NO. LTU-5-1. ALL COSTS FOR DOWELED JOINTS IN FULL DEPTH PATCHING SHALL BE INCLUDED IN THE PRICE BID FOR THIS ITEM. NO ADDITIONAL PAYMENT SHALL BE MADE.
- 104 QUANTITY INCLUDES 187 CY AS SHOWN ON THE SURFACING SUMMARY, 54 CY AS SHOWN ON THE DRIVEWAY SUMMARY AND 12 CY AS SHOWN ON THE CURB RAMPS SUMMARY.
- 105 QUANTITY INCLUDES 243 CY FOR SURFACING AND AN ADDITIONAL 25 CY FOR SIDEWALK CONSTRUCTION TO BE USED AS DIRECTED BY THE ENGINEER.
- 106 COST FOR REMOVAL OF ABANDONED UTILITY PIPE LINES THAT INTERFERE WITH CONSTRUCTION SHALL BE INCLUDED IN PRICE BID FOR UNCLASSIFIED EXCAVATION.
- 107 ALL HYDRANTS, VALVES AND OTHER FITTINGS FROM ABANDONED WATER MAINS SHALL BE SALVAGED AND DELIVERED TO SOUTH YARD, 2317 S JACKSON. PAYMENT TO BE MADE UNDER URBAN RIGHT OF WAY RESTORATION. NO ADDITIONAL PAYMENT SHALL BE MADE.
- 108 CONTRACTOR SHALL ENSURE ALL POLES WHICH ARE AFFECTED BY TRENCHING CONDITIONS ARE BRACED BY OWNERS. PAYMENT SHALL BE INCLUDED IN URBAN RIGHT OF WAY RESTORATION. NO ADDITIONAL PAYMENT SHALL BE MADE.
- 109 COST OF ANY TEMPORARY FENCING AND POLES SHALL BE INCLUDED IN COST OF URBAN RIGHT OF WAY RESTORATION. NO ADDITIONAL PAYMENT SHALL BE MADE.
- 110 PAY ITEM SHALL BE USED TO FACILITATE AN ADA COMPLIANT PATHWAY FOR SIDEWALK CONSTRUCTION AS DIRECTED BY ENGINEER.
- 111 COST OF SELECT BACKFILL AND COMPACTION, BEHIND THE CURB, SHALL BE INCLUDED IN PRICE BID FOR CURB AND GUTTER.
- 112 GUARDRAIL SHALL BE REMOVED IN SUCH A MANNER THAT ALL MATERIAL CAN BE SALVAGED. BOLTS, SUPPORTS, AND OTHER HARDWARE SHALL BE REMOVED FROM RAILS, PLATES, AND POSTS AND ALL PARTS SHALL BE SORTED AND STORED AT 420 W. 23RD STREET. RAILS, PLATES, AND POSTS SHALL BE PROPERLY STACKED AND MISCELLANEOUS HARDWARE SHALL BE STACKED OR BOXED AND REASONABLE CARE EXERCISED IN HANDLING, STORAGE, AND PRESERVATION OF MATERIALS AS WILL ENSURE MAXIMUM SALVAGE VALUE FOR THE ENTIRE OPERATION.
- 113 THE CONTRACTOR SHALL BE RESPONSIBLE FOR THE REPLACEMENT OF ALL EXISTING TRAFFIC SIGNS AND MARKINGS REMOVED OR DAMAGED AS PART OF THIS PROJECT. ALL SIGNS AND POLES PROVIDED SHALL BE NEW AND UNDAMAGED AND SHALL MEET THE REQUIREMENTS OF COT SPECIFICATION 608 TRAFFIC SIGNS.

TRAFFIC PAY ITEM NOTES (06/27/2025)

- T-1 ALL TRAFFIC MATERIALS REMOVED SHALL BE HANDLED PER COT SPECIFICATION 625 REMOVAL OF TRAFFIC ITEMS.
- T-2 REFLECTORIZED SHEETING ON SIGNS AND BARRICADES SHALL BE OF A CUBIC PRISMATIC TYPE AND SHALL MEET THE SPECIFICATIONS ESTABLISHED FOR ASTM D 4956-01 TYPE IX RETROREFLECTIVE SHEETING. REFLECTORIZED SHEETING ON DRUMS AND TUBE CHANNELIZERS SHALL BE OF A HIGH-INTENSITY TYPE AND SHALL MEET THE SPECIFICATIONS ESTABLISHED FOR ASTM D 4956-01 TYPE III RETROREFLECTIVE SHEETING.
- T-3 ALL PLASTIC PAVEMENT MARKINGS SHALL BE:

EXTRUDED-APPLIED THERMOPLASTIC (USE ON ASPHALT AND CONCRETE PAVEMENT). THERMOPLASTIC PAVEMENT MARKINGS SHALL ONLY BE APPLIED WHEN THE SURFACE TEMPERATURE EXCEEDS 55°F FOR ALL OF THE SIX HOURS PRIOR TO INSTALLATION AND MAXIMUM WIND GUSTS ARE BELOW 15 MPH AT THE TIME OF APPLICATION. PRICE BID TO INCLUDE FLEX TABS OR LIKE KIND FOR POST CONSTRUCTION LANE MARKING/SEPARATION. MECHANICALLY APPLIED PREFORMED PLASTIC TAPE ("COLD TAPE") WILL NOT BE ACCEPTED.
- T-4 PAYMENT SHALL BE MADE ON A SIGN-DAY BASIS ONLY FOR TRAFFIC CONTROL DEVICES THAT ARE PROPERLY INSTALLED AND IN GOOD WORKING ORDER. COSTS FOR DELIVERY, INSTALLATION, RELOCATION, MAINTENANCE REMOVAL AND REPLACEMENT, AS NEEDED AT THE DISCRETION OF THE ENGINEER, INCLUDED IN UNIT PRICE BID.
- T-5 IF WARNING LIGHTS ARE TO BE USED ON TRAFFIC CONTROL DEVICES, TYPE "A" LIGHTS SHALL ONLY BE USED ON DEVICES WARNING OF UNEXPECTED HAZARDS, AND SHALL NOT BE USED FOR DELINEATION OF THE TRAVELED WAY. ONLY TYPE "C" WARNING LIGHTS SHALL BE USED FOR DELINEATION OF THE TRAVELED WAY, AND TYPE "C" LIGHTS SHALL NOT BE USED FOR ANY OTHER PURPOSE.
- T-6 THE PAY ITEM FOR FLAGGER SHALL BE PAID FOR ON A FLAG DAY (F.D.) BASIS. ONE F.D. IS ONE COMPLETE WORKDAY PERFORMED BY THE CONTRACTOR AS SET FORTH IN THE CONTRACT DOCUMENTS AND SPECIFICATIONS.
- T-7 PRICE BID FOR THIS ITEM INCLUDES INSTALLATION, MAINTENANCE AND SUBSEQUENT REMOVAL OF PROJECT SIGN.
- T-8 COT 602 CONDUITS:
ALL CONDUIT END SHALL BE REAMED AND BUSHINGS SHALL BE INSTALLED PRIOR TO PULLING ANY WRES.
- T-9 THIS PAY ITEM INCLUDES THE REMOVAL AND DELIVERY OF THE FOLLOWING EQUIPMENT TO THE CITY OF TULSA TRAFFIC OPERATIONS SHOP AT 3801 N HARVARD AVE, WHICH IS TO REMAIN THE PROPERTY OF THE CITY OF TULSA:
TRAFFIC SIGNAL ITEMS INCLUDE: MULTI-SIDED GALVANIZED TRAFFIC SIGNAL POLES, SIGNAL HEADS, PEDESTRIAN HEADS AND PUSH BUTTONS, BACK PLATES, CONTROLLER CABINET ASSEMBLY, CABINET GUARD, UNDAMAGED PULL BOX LIDS, MAST ARM SIGNS, ASTRO-BRACKETS, SPAN WIRE EQUIPMENT AND ANY OTHER TRAFFIC SIGNAL EQUIPMENT REMOVED EXCEPT FOR THE PULL BOXES, CONDUIT AND WIRE WHICH SHALL BECOME THE PROPERTY OF THE CONTRACTOR. THE PRICE BID SHALL INCLUDE THE REMOVAL OF ALL FOOTINGS BELOW GROUND LEVEL OR AS DIRECTED BY THE ENGINEER. FOOTINGS, GREEN ARM POLES, AND ALL OTHER SIGNAL POLES OTHER THAN THE MULTI-SIDED POLES ARE TO BECOME THE PROPERTY OF THE CONTRACTOR.
- T-10 THE DETECTION SYSTEM SHALL BE ON THE TRAFFIC OPERATIONS APPROVED PRODUCTS LIST (APL). THE DETECTION SYSTEM SHALL BE VIDEO DETECTION, AND SHALL DETECT VEHICLES, BICYCLES, AND MOTORCYCLES ON A ROADWAY BY PROCESSING VIDEO DATA THAT PROVIDES VEHICLE PRESENCE, TRAFFIC FLOW DATA, AND EVENT ALARMS, FOR REAL-TIME TRAFFIC CONTROL AND MANAGEMENT SYSTEMS.

DETECTION SYSTEMS SHALL INCLUDE ALL MATERIALS INCLUDING VIDEO DETECTOR CAMERAS, VIDEO CARDS, COMMUNICATION CARDS, CABLING, AND OTHER MATERIALS AS NECESSARY TO MAKE DETECTION SYSTEM FULLY OPERATIONAL AT AN INTERSECTION.

DETECTION SYSTEM CAMERAS SHALL BE IP-ADDRESSABLE.

DETECTION SYSTEMS SHALL NOT USE COAXIAL. DETECTION SYSTEMS SHALL USE A 3-WIRE SYSTEM UTILIZING BROADBAND OVER POWER LINES (BPL) TO REDUCE INTERFERENCE IN THE SYSTEM.
- 201 250 CONSTRUCTION CALENDAR DAYS WERE USED TO COMPUTE THE SIGN DAY AND FLAG DAY PAY ITEMS. THE AMOUNT OF CALENDAR DAYS USED TO COMPUTE THE SIGN DAY AND FLAG DAY PAY ITEMS IS AN ESTIMATED QUANTITY ONLY, BASED ON THE CURRENT COT STANDARDS AND SUGGESTED CONSTRUCTION SEQUENCE FOR THIS PROJECT. THESE ESTIMATED SIGN DAY AND FLAG DAY QUANTITIES MAY CHANGE AS THE PROJECT'S CONSTRUCTION TRAFFIC CONTROL IS MODIFIED DURING CONSTRUCTION.
- 202 QUANTITIES SHOWN FOR CONSTRUCTION SIGNING HAVE BEEN INCREASED TO ALLOW FOR TRAFFIC CONTROL ON CROSS STREETS NOT SHOWN ON THE PLANS.

TRAFFIC PAY ITEM NOTES (CONT.) (06/27/2025)

- 203 CONTRACTOR SHALL INSTALL AND MAINTAIN SAFETY FENCE ALONG THE EDGE OF OPEN CUTS WITHIN THE CONSTRUCTION ZONE. SAFETY FENCE SHALL BE AN OPEN MESH TYPE, HIGH-DENSITY PLASTIC MATERIAL, 48-INCHES IN HEIGHT, AND COLORED INTERNATIONAL SAFETY ORANGE. FENCE SHALL BE SUPPORTED BY FENCE POSTS SPACED AT NO MORE THAN 10 FEET. PAYMENT FOR SAFETY FENCE SHALL BE AT THE UNIT PRICE BID PER LINEAR FOOT BASED ON THE TOTAL FOOTAGE USED FOR THE DURATION OF THE PROJECT. NO ADDITIONAL PAYMENT WILL BE MADE FOR MOVING THE FENCE AS THE JOB SITE CHANGES.
- 204 REFER TO COT STANDARD 102 FOR DETAILS TO BE DETERMINED BY THE FIELD ENGINEER.
- 205 CONTRACTOR SHALL INSTALL AND MAINTAIN INFORMATION SIGNS TO ADVISE PUBLIC THAT BUSINESSES ARE OPEN AND WHERE ACCESS POINTS TO THE BUSINESSES ARE LOCATED.

BRIDGE PAY ITEM NOTES (10/31/2025)

- 301 PAYMENT FOR THIS ITEM WILL BE BASED ON PLAN QUANTITIES ONLY. SEE SECTION 109.01B OF THE ODOT 2019 STANDARD SPECIFICATIONS.
- 302 ALL COST INCLUDING LABOR, EQUIPMENT, MATERIAL, AND INCIDENTALS NECESSARY TO COMPLETE THE WORK DESCRIBED ABOVE SHALL BE INCLUDED IN THE PRICE BID PER LINEAR FOOT OF "PREPARATION OF CRACKS, ABOVE WATER" AND THE PRICE BID PER GALLON OF "EPOXY RESIN, ABOVE WATER".
- 303 AN ADDITIONAL 25 LF OF QUANTITY FOR ALL BRIDGES WITH THE PAY ITEM "PREPARATION OF CRACKS, ABOVE WATER" HAS BEEN INCLUDED IN THE QUANTITIES, TO BE USED AT THE DISCRETION OF THE ENGINEER.
- 304 PAY ITEM FOR REMOVAL OF EXISTING SUPERSTRUCTURE (INCLUDING SOUTH EXTERIOR EXISTING BEAMS AND DIAPHRAGMS), APPROACH SLABS AND EXCAVATION FOR CLSM UNDER APPROACH SLABS.
- 305 ALL LABOR, EQUIPMENT, AND MATERIAL REQUIRED TO FABRICATE, TRANSPORT, AND INSTALL ANTI-LOITERING DEVICES SHALL BE INCLUDED IN THE PRICE BID PER CY OF "CLASS A CONCRETE, SMALL STRUCTURES".
- 306 THERE IS AN ESTIMATED 50 CY OF CLASS AA CONCRETE AND FOR BOTH APPROACH SLABS. THERE IS AN ADDITIONAL ESTIMATED 7.5 CY OF CLASS AA CONCRETE FOR BOTH APPROACH SLABS.
- 307 THERE IS AN ESTIMATED 10,150 POUNDS OF EPOXY COATED REINFORCING STEEL FOR BOTH APPROACH SLABS. THERE IS AN ADDITIONAL 680 POUNDS OF EPOXY COATED REINFORCING STEEL IN SIDEWALKS FOR BOTH APPROACH SLABS.
- 308 PAY ITEM TO INCLUDE BRIDGE SCUPPERS AS DETAILED ON SHEET 32 AND LOCATIONS SHOWN ON SHEETS 27 AND 28. SCUPPERS SHALL BE STRUCTURAL STEEL M270 GRADE 50W. THERE IS AN ESTIMATED 2,500 POUNDS OF STRUCTURAL STEEL FOR 15 SCUPPERS.



PAY ITEMS & NOTES
(3 OF 3)

ARTERIAL STREET REHABILITATION
E. PINE ST. (MINGO RD. TO GARNETT RD.) &
BRIDGE #225 OVER MINGO CREEK
PROJECT NO.
2436B005Z-225, 2037B0225Z, 2036A0044Z

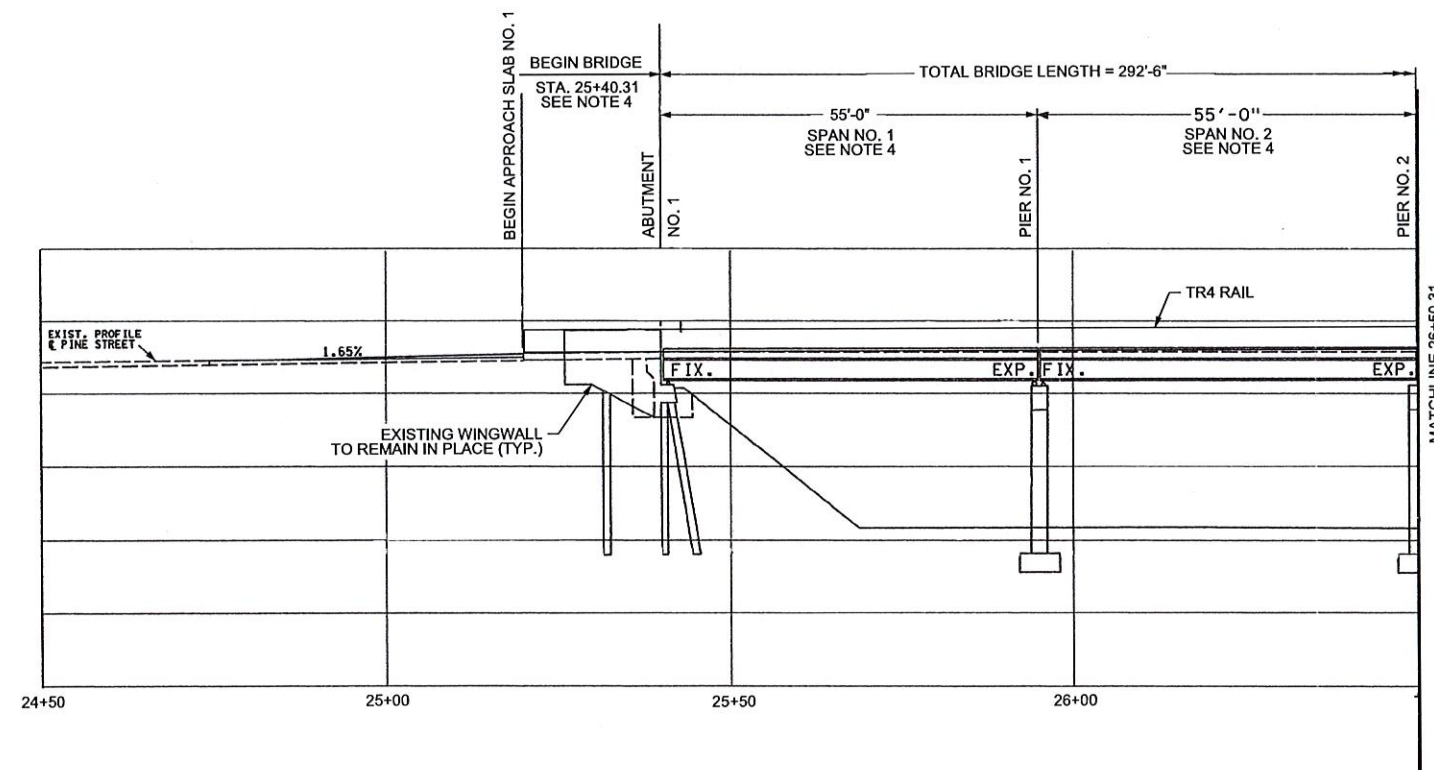
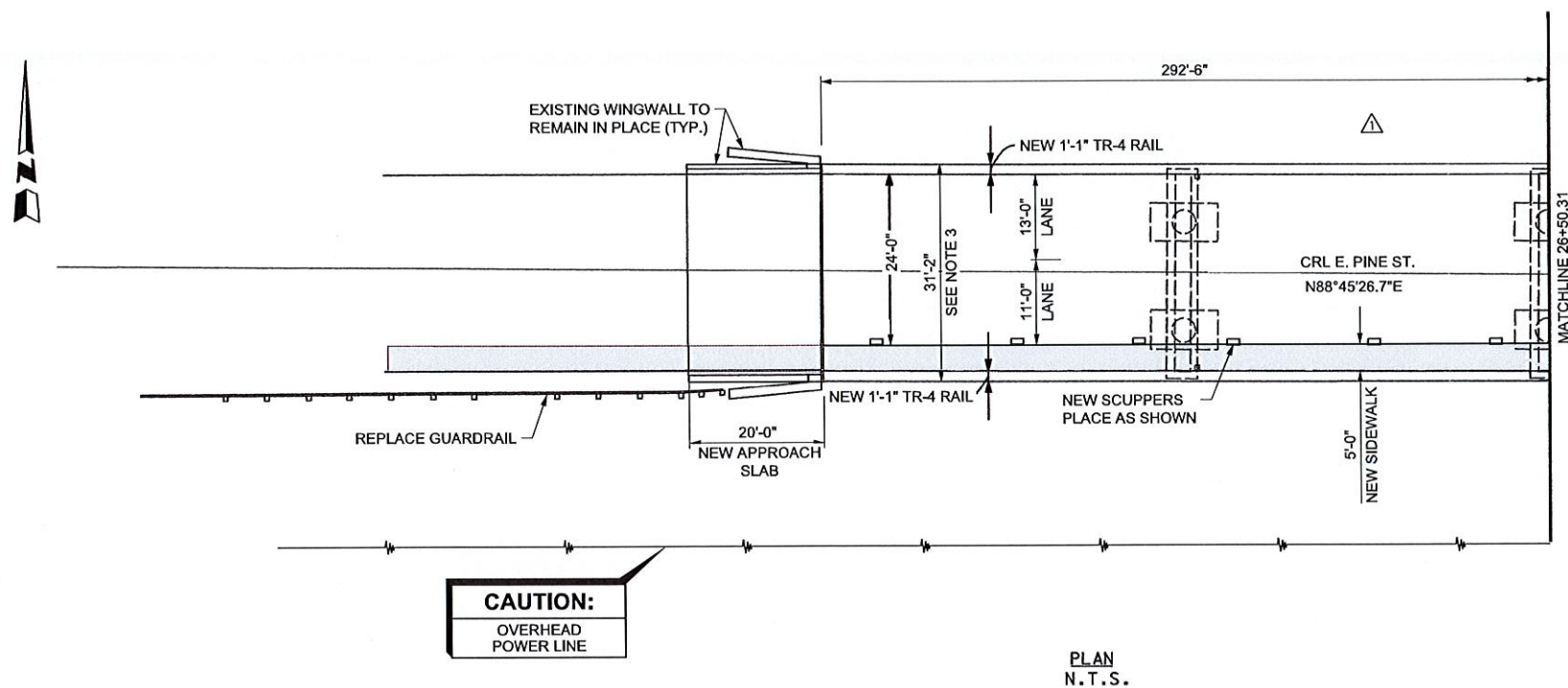
CITY OF TULSA, OKLAHOMA
PUBLIC WORKS DEPARTMENT

BENHAM Benham Design, LLC
15 W 6th St, Suite 900
Tulsa, Oklahoma 74119
(918) 492-1600

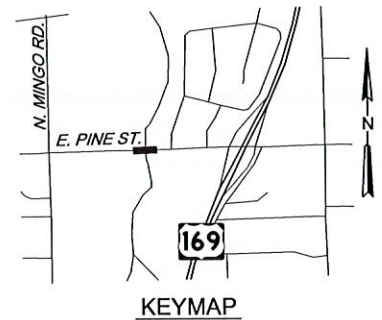
REVISION	BY	DATE	PLAN SCALE	DRAWN	ES	1925	APPROVED:
△ ADDED PAY ITEM NOTE	KSJ	02/4/26	1"= NA	DESIGNED	KLE	1925	
				SURVEY	RDL	1925	
			PROFILE SCALE	FIELD MGR			
			HORIZONTAL: 1"= NA	PROJECT MGR			
			VERTICAL: 1"= NA	LEAD ENGR			
				RECOMMENDED			
				DESIGN MANAGER			
			FILE: 1400405-C-Play Items 03.dgn				
			ATLAS PAGE NO.: 172, 173				



CITY ENGINEER
DATE: OCTOBER 2025
SHEET 5 OF 54 SHEETS



**NOTE:
ALL DETAILS ARE
NOT TO SCALE**



**CONTRACTOR SHALL FIELD
VERIFY ALL DIMENSIONS,
MATERIALS, QUANTITIES AND
ALL INCIDENTALS PRIOR TO
FABRICATION OF MATERIALS OR
CONSTRUCTION**

NOTES:

1. ALL DIMENSIONS AND COMPONENTS OF EXISTING BRIDGE SHOWN ARE APPROXIMATE. THE CONTRACTOR SHALL VERIFY REPAIR LOCATIONS ALL DIMENSIONS NECESSARY TO COMPLETE THE WORK AND BE SOLELY RESPONSIBLE FOR THE ACCURACY THEREOF.
2. BIDDERS SHALL FULLY INFORM THEMSELVES OF THE NATURE OF THE WORK AND CONDITIONS UNDER WHICH IT WILL BE PERFORMED. THE CONTRACTOR SHALL ADOPT METHODS CONSISTENT WITH GOOD CONSTRUCTION PRACTICE AND SHALL TAKE ALL NECESSARY PRECAUTIONS TO PREVENT DAMAGE TO THE EXISTING BRIDGE STRUCTURE AND ROADWAY. DAMAGE DUE TO THE CONSTRUCTOR'S NEGLIGENCE SHALL BE REPAIRED AT THE CONTRACTOR'S EXPENSE, TO THE SATISFACTION OF THE ENGINEER.
3. FINAL CONSTRUCTED WIDTH OF BRIDGE IS 2" WIDER THAN EXISTING, BASED ON AS-BUILT PLANS.
4. 1977 AS-BUILTS (SPANS 1 AND 2), 2008 REHAB PLANS, INSPECTION REPORTS AND 2025 SURVEY ALL HAVE DIFFERENT SPAN LENGTHS AND ELEVATIONS. NO AS-BUILTS ARE AVAILABLE FOR THE ORIGINAL BRIDGE (SPANS 3-5). THE CONTRACTOR SHALL FIELD VERIFY ALL DIMENSIONS, ELEVATIONS AND MATERIALS REQUIRED TO COMPLETE THE WORK AS DESCRIBED IN THESE PLANS. SEE BRIDGE GENERAL NOTES "VERIFICATION OF EXISTING CONDITIONS".
5. ALL MATERIAL THAT IS FABRICATED TO DIMENSIONS NOT FITTING EXISTING CONDITIONS SHALL BE THE SOLE RESPONSIBILITY OF THE CONTRACTOR AND SHALL BE REPLACED BY THE CONTRACTOR AT NO COST TO THE CITY.



BRIDGE 225 OVER MINGO CREEK
GENERAL PLAN AND ELEVATION
(1 OF 2)

ARTERIAL STREET REHABILITATION
E. PINE ST. (MINGO RD. TO GARNETT RD.) &
BRIDGE #225 OVER MINGO CREEK
PROJECT NO.
2436B005Z-225, 2037B0225Z, 2036A0044Z

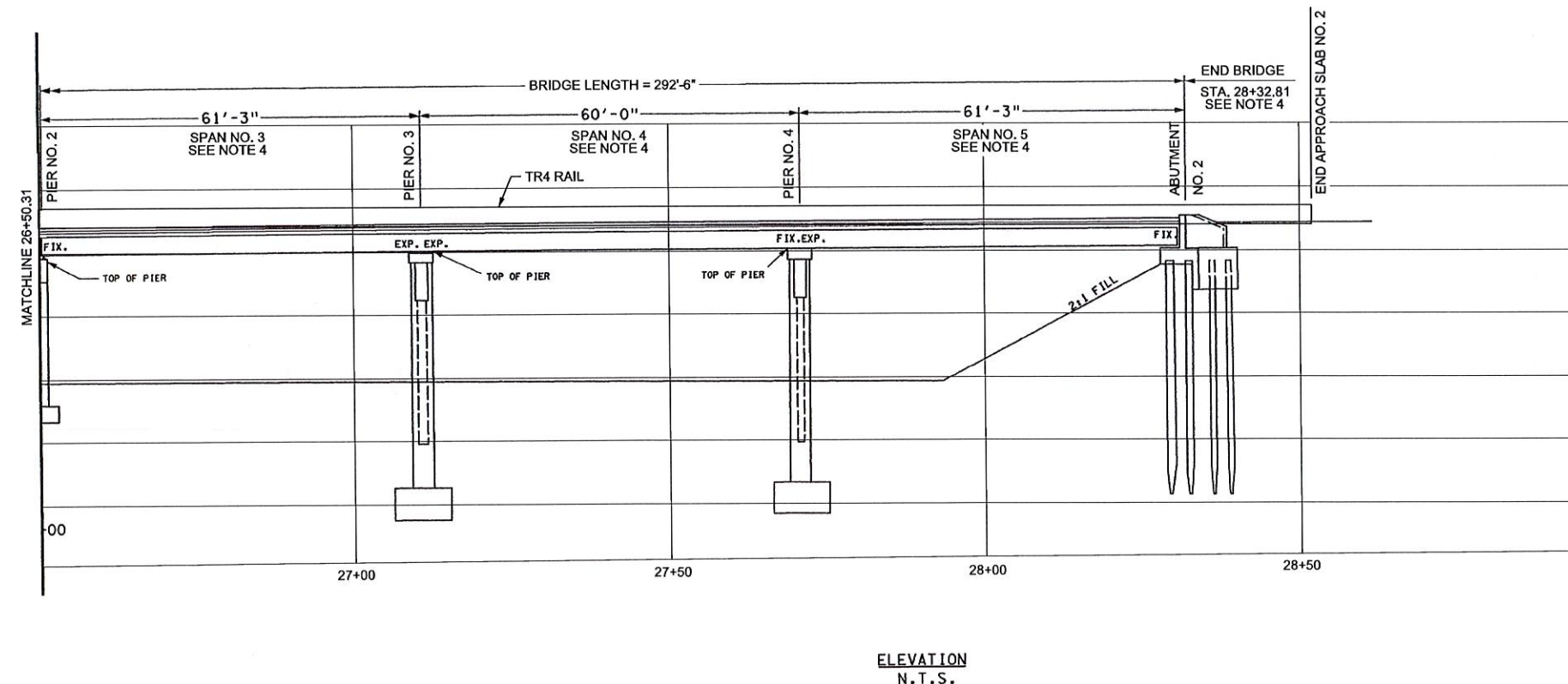
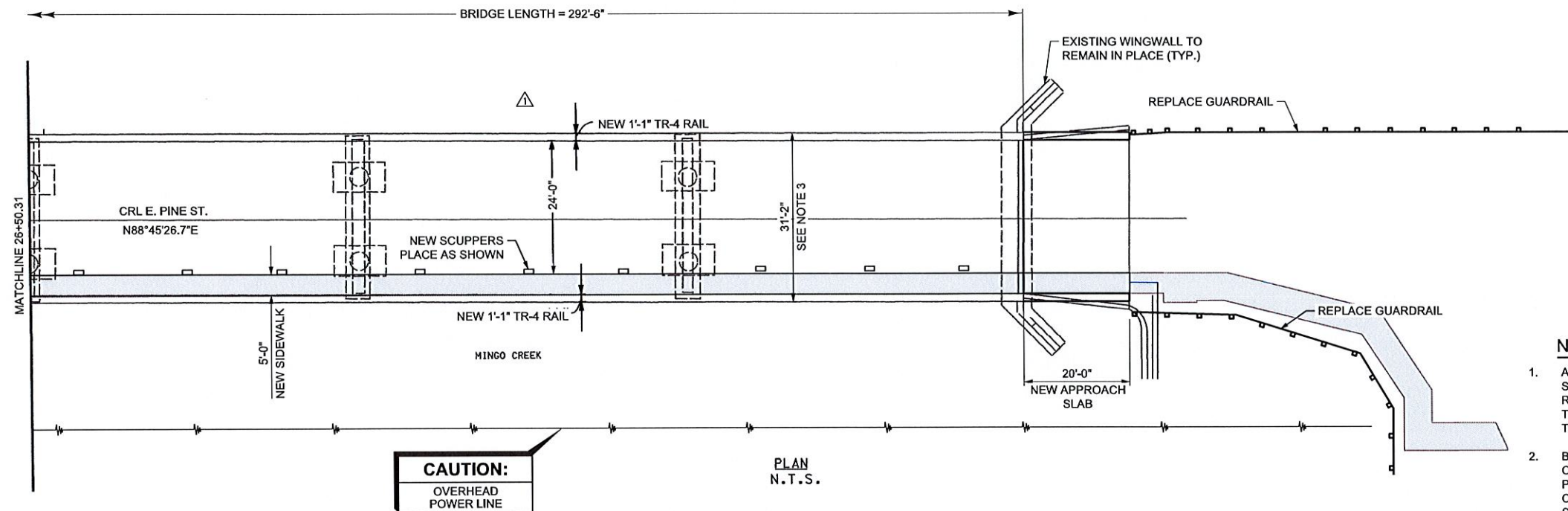
CITY OF TULSA, OKLAHOMA
PUBLIC WORKS DEPARTMENT

REVISION	BY	DATE	PLAN SCALE	DRAWN	BEW	10/25	APPROVED:
A REMOVED N. SIDE SCPRS.	KSJ	02/4/26	1"	DESIGNED	KSJ	10/25	
				SURVEY	RDL	10/25	
			PROFILE SCALE	FIELD MGR			
			HORIZONTAL:	PROJECT MGR			
			VERTICAL:	LEAD ENGR			
			1"	RECOMMENDED			
				DESIGN MANAGER			CITY ENGINEER
			FILE: 14030405-S-225-Detail01.dgn				DATE: OCTOBER 2025
			ATLAS PAGE NO.: 172, 173				SHEET 27 OF 54 SHEETS

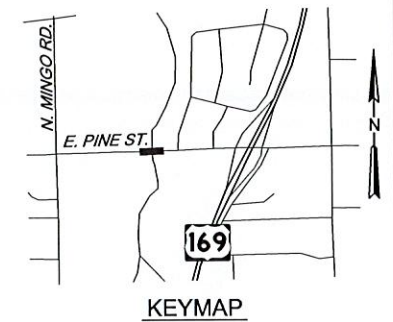
P:\140_Civil\1400405 COT Pine St Bridge Rehab\21Design\Working\Civil\07OpenRoads\1400405-S-225-Details.dgn

10:40:09 AM

2/4/2026



NOTE:
ALL DETAILS ARE
NOT TO SCALE



CONTRACTOR SHALL FIELD
VERIFY ALL DIMENSIONS,
MATERIALS, QUANTITIES AND
ALL INCIDENTALS PRIOR TO
FABRICATION OF MATERIALS OR
CONSTRUCTION

NOTES:

1. ALL DIMENSIONS AND COMPONENTS OF EXISTING BRIDGE SHOWN ARE APPROXIMATE. THE CONTRACTOR SHALL VERIFY REPAIR LOCATIONS ALL DIMENSIONS NECESSARY TO COMPLETE THE WORK AND BE SOLELY RESPONSIBLE FOR THE ACCURACY THEREOF.
2. BIDDERS SHALL FULLY INFORM THEMSELVES OF THE NATURE OF THE WORK AND CONDITIONS UNDER WHICH IT WILL BE PERFORMED. THE CONTRACTOR SHALL ADOPT METHODS CONSISTENT WITH GOOD CONSTRUCTION PRACTICE AND SHALL TAKE ALL NECESSARY PRECAUTIONS TO PREVENT DAMAGE TO THE EXISTING BRIDGE STRUCTURE AND ROADWAY. DAMAGE DUE TO THE CONSTRUCTOR'S NEGLIGENCE SHALL BE REPAIRED AT THE CONTRACTOR'S EXPENSE, TO THE SATISFACTION OF THE ENGINEER.
3. FINAL CONSTRUCTED WIDTH OF BRIDGE IS 2" WIDER THAN EXISTING, BASED ON AS-BUILT PLANS.
4. 1977 AS-BUILTS (SPANS 1 AND 2), 2008 REHAB PLANS, INSPECTION REPORTS AND 2025 SURVEY ALL HAVE DIFFERENT SPAN LENGTHS AND ELEVATIONS. NO AS-BUILTS ARE AVAILABLE FOR THE ORIGINAL BRIDGE (SPANS 3-5). THE CONTRACTOR SHALL FIELD VERIFY ALL DIMENSIONS, ELEVATIONS AND MATERIALS REQUIRED TO COMPLETE THE WORK AS DESCRIBED IN THESE PLANS. SEE BRIDGE GENERAL NOTES "VERIFICATION OF EXISTING CONDITIONS".
5. ALL MATERIAL THAT IS FABRICATED TO DIMENSIONS NOT FITTING EXISTING CONDITIONS SHALL BE THE SOLE RESPONSIBILITY OF THE CONTRACTOR AND SHALL BE REPLACED BY THE CONTRACTOR AT NO COST TO THE CITY.



BRIDGE 225 OVER MINGO CREEK
GENERAL PLAN AND ELEVATION
(2 OF 2)

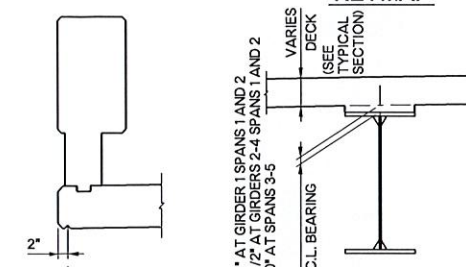
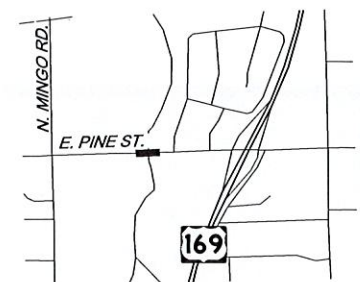
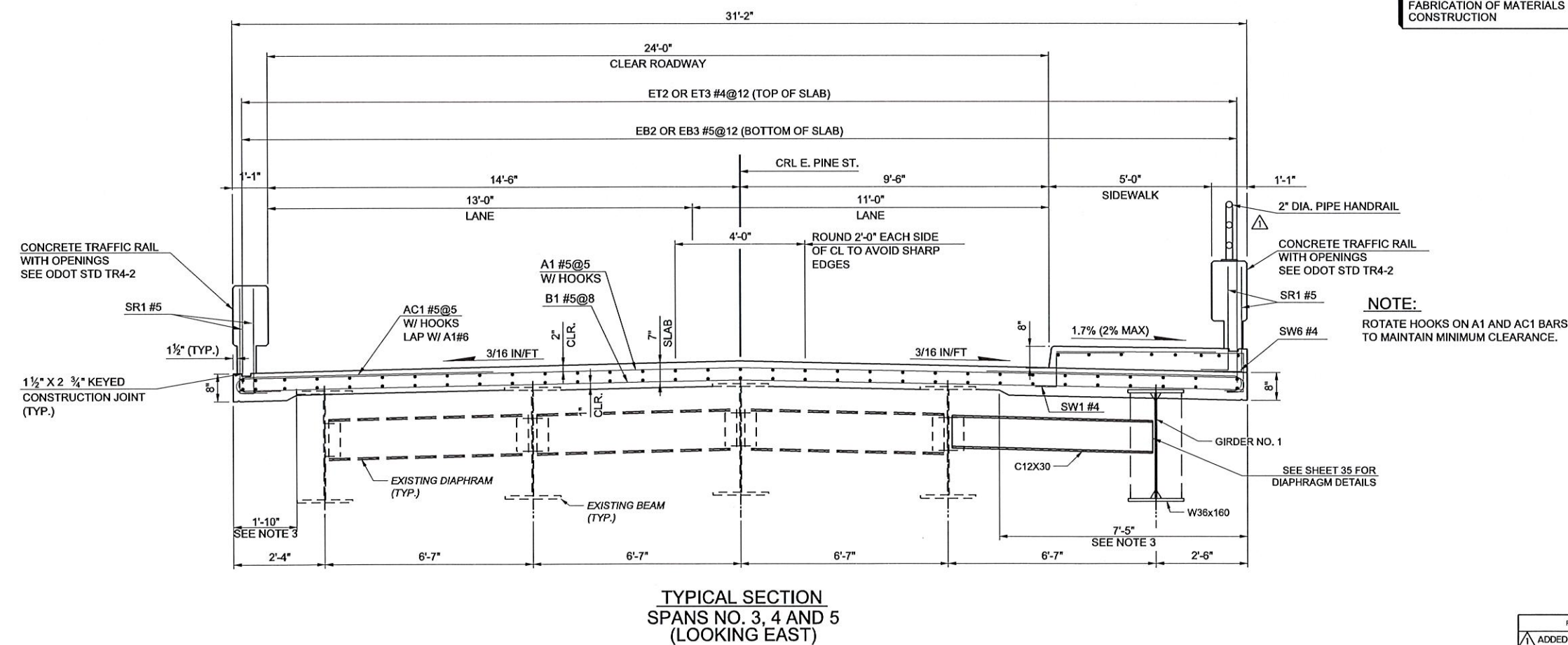
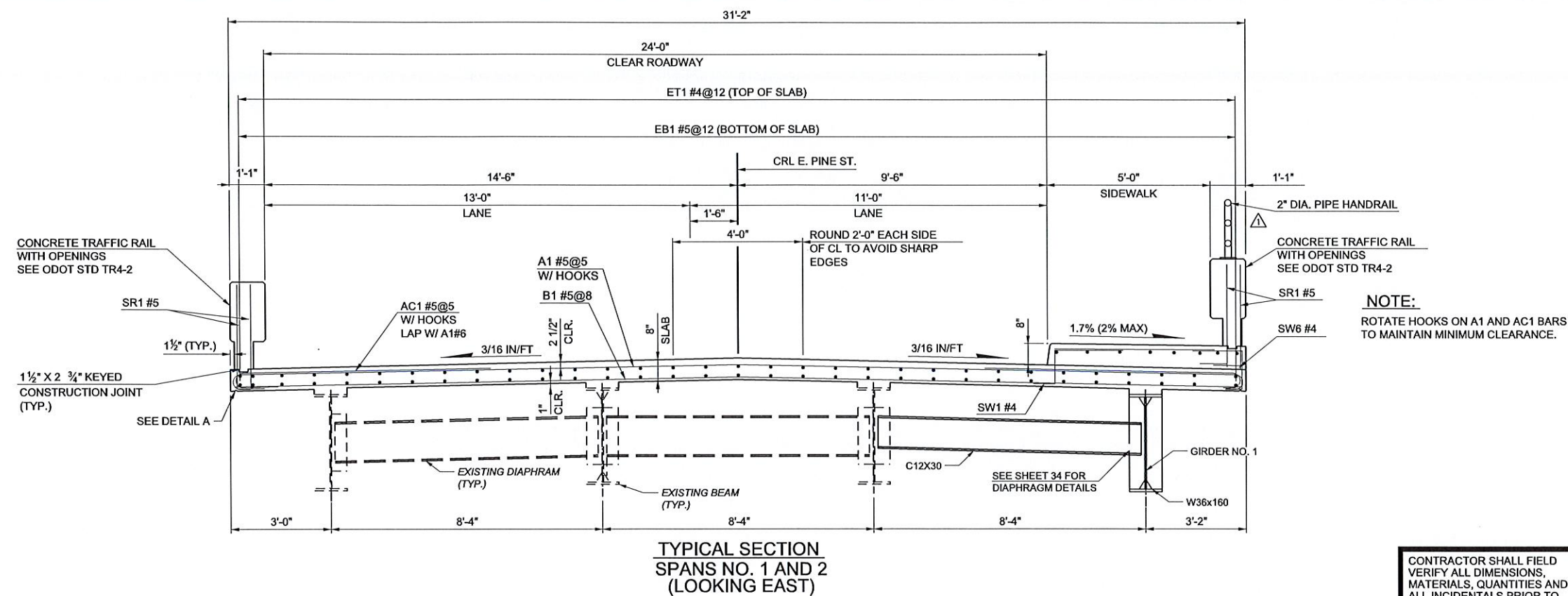
ARTERIAL STREET REHABILITATION
E. PINE ST. (MINGO RD. TO GARNETT RD.) &
BRIDGE #225 OVER MINGO CREEK
PROJECT NO.
2436B005Z-225, 2037B0225Z, 2036A0044Z

CITY OF TULSA, OKLAHOMA
PUBLIC WORKS DEPARTMENT

BENHAM Benham Design, LLC
15 W 6th St, Suite 900
Tulsa, Oklahoma 74119
(918) 492-1600
a Haskell Company

REVISION	BY	DATE	PLAN SCALE	DRAWN	BEW	10/25	APPROVED:
1	REMOVED N. SIDE SCPRS.	KSJ	02/4/26	DESIGNED	KSJ	10/25	
				SURVEY	RDL	10/25	
			PROFILE SCALE	FIELD MGR			
			HORIZONTAL:	PROJECT MGR			
			1"=	LEAD ENGR			
			VERTICAL:	RECOMMENDED			
			1"=	DESIGN MANAGER			
			FILE: 1400405-S-225-Details.dgn				
			ATLAS PAGE NO.: 172, 173				

DATE: OCTOBER 2025
SHEET 28 OF 54 SHEETS



NOTE:
ROTATE HOOKS ON A1 AND AC1 BAR
TO MAINTAIN MINIMUM CLEARANCE.



CONTRACTOR SHALL FIELD
VERIFY ALL DIMENSIONS,
MATERIALS, QUANTITIES AND
ALL INCIDENTALS PRIOR TO
FABRICATION OF MATERIALS OR
CONSTRUCTION


PLAN QUANTITIES FOR CLASS AA CONCRETE INCLUDE BEAM HAUNCHES. THE HAUNCH HEIGHT SHOWN IS THE THEORETICAL HAUNCH HEIGHT AT THE CENTERLINE BEARING ONLY, MEASURED FROM THE BOTTOM OF THE DEAD END TO THE TOP OF THE BEAM, AND VARIES ACROSS THE SPAN. DETERMINE THE ACTUAL HAUNCH HEIGHT (ACCOUNTING FOR BEAM CAMBER, DEAD LOAD DEFLECTION AND ROADWAY GRADE) AFTER ERECTION OF THE BEAMS AND SUBMIT TO THE ENGINEER FOR APPROVAL. THE ENGINEER WILL NOT MEASURE DIFFERENCES BETWEEN THE THEORETICAL AND THE ACTUAL HAUNCH HEIGHT FOR PAYMENT.

NOTES:

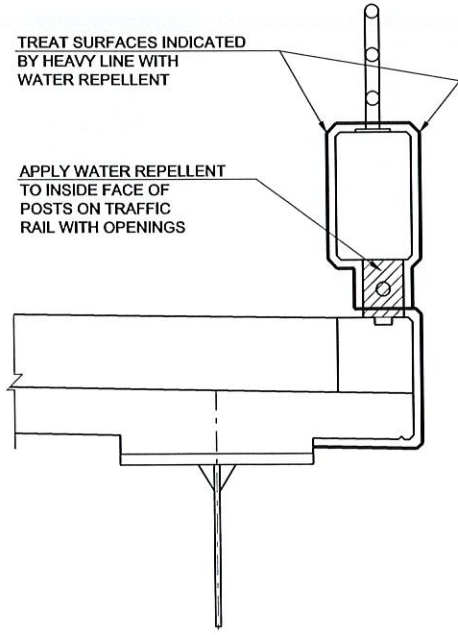
1. ALL DIMENSIONS AND COMPONENTS OF EXISTING BRIDGE SHOWN ARE APPROXIMATE. THE CONTRACTOR SHALL VERIFY REPAIR LOCATIONS ALL DIMENSIONS NECESSARY TO COMPLETE THE WORK AND BE SOLELY RESPONSIBLE FOR THE ACCURACY THEREOF.
2. BIDDERS SHALL FULLY INFORM THEMSELVES OF THE NATURE OF THE WORK AND CONDITIONS UNDER WHICH IT WILL BE PERFORMED. THE CONTRACTOR SHALL ADOPT METHODS CONSISTENT WITH GOOD CONSTRUCTION PRACTICE AND SHALL TAKE ALL NECESSARY PRECAUTIONS TO PREVENT DAMAGE TO THE EXISTING BRIDGE STRUCTURE AND ROADWAY. DAMAGE DUE TO THE CONTRACTOR'S NEGLIGENCE SHALL BE REPAIRED AT THE CONTRACTOR'S EXPENSE, TO THE SATISFACTION OF THE
3. DECK THICKNESS SHALL TRANSITION FROM 7" TO 8" OVER A 4' LENGTH.



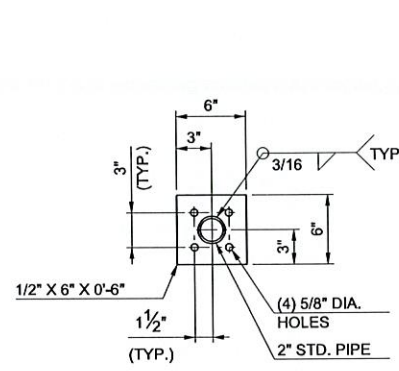
<p align="center">BRIDGE 225 OVER MINGO CREEK SUPERSTRUCTURE DETAILS (1 OF 8)</p> <p align="center">ARTERIAL STREET REHABILITATION E. PINE ST. (MINGO RD. TO GARNETT RD.) & BRIDGE #225 OVER MINGO CREEK PROJECT NO. 2436B005Z-225, 2037B0225Z, 2036A0044Z</p>				
<p align="center">CITY OF TULSA, OKLAHOMA PUBLIC WORKS DEPARTMENT</p>				
 <p>BENHAM a Haskell Company</p>		<p>Benham Design, LLC 15 W 6th St, Suite 900 Tulsa, Oklahoma 74119 (918) 492-1600</p>		
DATE 4/26	PLAN SCALE 1"=	DRAWN DESIGNED SURVEY FIELD MGR PROJECT MGR LEAD ENGR RECOMMENDED DESIGN MANAGER	BEW KSJ RDL 	19/25 19/25 19/25
	PROFILE SCALE HORIZONTAL: 1"=	 		
	VERTICAL: 1"=	 		
FILE: 1405405-S-225-Detail3A.dgn ATLAS PAGE NO.: 172 173		<p align="right">  CITY ENGINEER DATE: OCTOBER 2025 SHEET 29 OF 54 SHEETS </p>		

REVISION 		BY	DATE	PLAN SCALE	DRAWN	BEW	19/25	APPROVED:  CITY ENGINEER
ADDED RAIL DETAIL		KSJ	02/4/26	1"=	DESIGNED	KSJ	19/25	
					SURVEY	ROL	19/25	
				PROFILE SCALE	FIELD MGR			
				HORIZONTAL:	PROJECT MGR			
				VERTICAL:	LEAD ENGR			 CITY ENGINEER
					RECOMMENDED			
					DESIGN MANAGER			
				FILE: 1404005-S-225-0265-0265A.dgn				
				ATLAS PAGE NO.: 172, 173				
				DATE: OCTOBER 2025				
				SHEET 29 OF 54 SHEET				

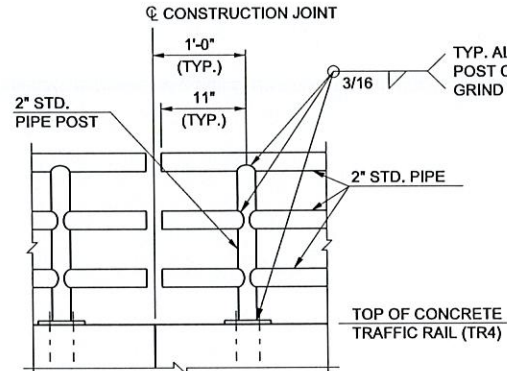




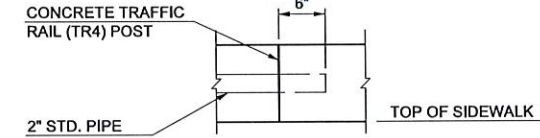
WATER REPELLENT TREATMENT DETAILS
SOUTH RAIL SHOWN, NORTH RAIL SIMILAR



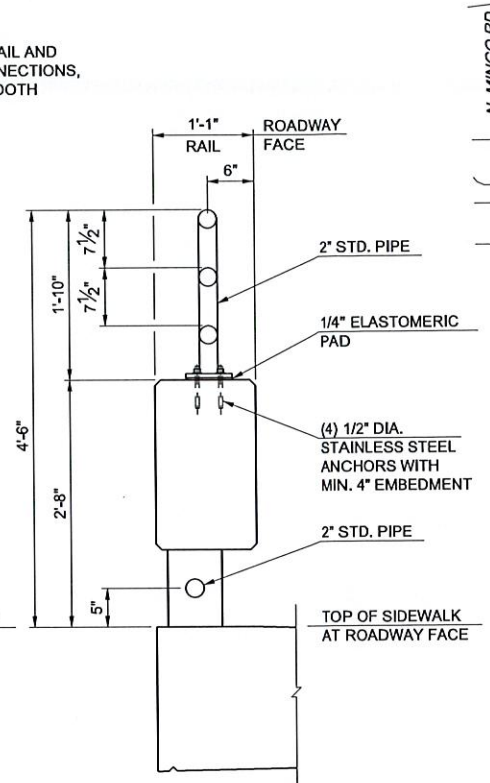
BASEPLATE DETAIL



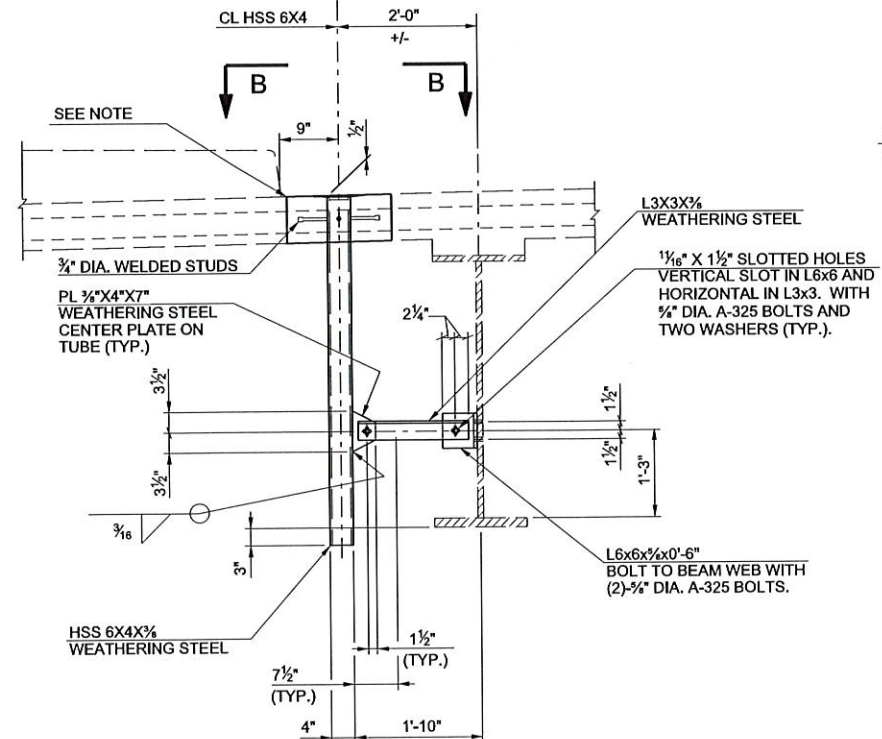
HANDRAIL ELEVATION



DETAIL 1



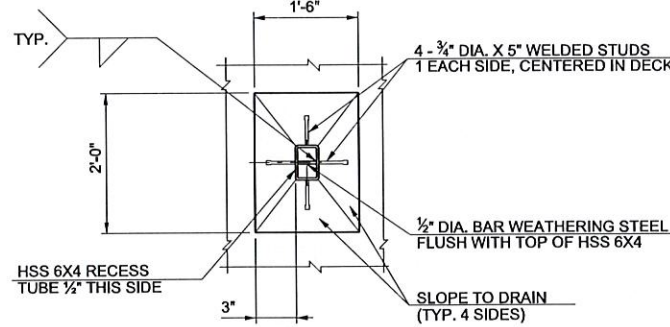
TYPICAL SECTION THRU RAIL
AT SIDEWALK



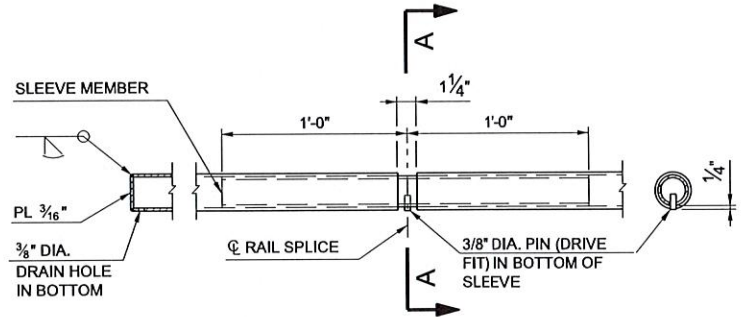
NOTES:

1. TYPICAL SECTION SHOWN FOR SCUPPERS LOCATED ON THE SOUTH SIDE OF BRIDGE SHALL BE PLACED ADJACENT TO THE SIDEWALK CURB.
2. DECK REINFORCING SHALL NOT BE FIELD CUT TO AVOID SCUPPERS, BUT PLACED IN FULL LENGTHS IN A MANNER THAT ACCOMMODATES SCUPPERS.

TYPICAL SECTION AT SCUPPER
LOOKING WEST



SECTION B-B



HANDRAIL FABRICATION DETAILS

PIPE RAILING NOTES:

1. THE CONTRACTOR SHALL FIELD VERIFY AND PROVIDE SUBMITTALS TO THE ENGINEER FOR APPROVAL PRIOR TO THE CONSTRUCTION OF THE STEEL PIPE RAILING.
2. STEEL PIPE RAILING AND POSTS SHALL BE 2" DIA. STD. STEEL PIPE CONFORMING TO ASTM A36 SPECIFICATIONS. ALL MATERIAL SHALL BE STRUCTURAL STEEL WITH A MINIMUM YIELD STRENGTH OF 36,000 P.S.I.. ALL POSTS SHALL BE VERTICAL. ALL WELDS SHALL BE 3/16" FILLET WELDS (UNLESS NOTED OTHERWISE). GRIND ALL WELDS AND EDGES SMOOTH.
3. STEEL RAILING, POSTS AND BASE PLATES SHALL BE BLACK POWDER COATED. BOLTS SHALL BE STAINLESS STEEL AND NOT REQUIRE BLACK POWDER COAT.
4. CARE SHALL BE TAKEN TO AVOID SCRATCHING, MARRING, DENTING, DISCOLORING OR OTHERWISE DAMAGING THE RAILING OR POSTS. ANY MEMBER DAMAGED AS TO DETRACT FROM THE APPEARANCE OF THE COMPLETED RAILING WILL BE REJECTED AND SHALL BE REPLACED BY THE CONTRACTOR AT HIS OWN EXPENSE.



BRIDGE 225 OVER MINGO CREEK
SUPERSTRUCTURE DETAILS
(4 OF 8)

ARTERIAL STREET REHABILITATION
E. PINE ST. (MINGO RD. TO GARNETT RD.) &
BRIDGE #225 OVER MINGO CREEK
PROJECT NO.
2436B005Z-225, 2037B0225Z, 2036A0044Z

CITY OF TULSA, OKLAHOMA
PUBLIC WORKS DEPARTMENT

BENHAM Benham Design, LLC
15 W 6th St, Suite 900
Tulsa, Oklahoma 74119
(918) 492-1600

REVISION	BY	DATE	PLAN SCALE	DRAWN	BEW	10/25	APPROVED:
1	KSJ	02/4/26	1"	DESIGNED	KSJ	10/25	
				SURVEY	RDL	10/25	
				FIELD MGR			
				PROJECT MGR			
				LEAD ENGR			
				RECOMMENDED			
				DESIGN MANAGER			
				FILE: 1400405-S-225-Detail09.dgn			
				ATLAS PAGE NO.: 172, 173			

DATE: OCTOBER 2025
SHEET 32 OF 54 SHEETS