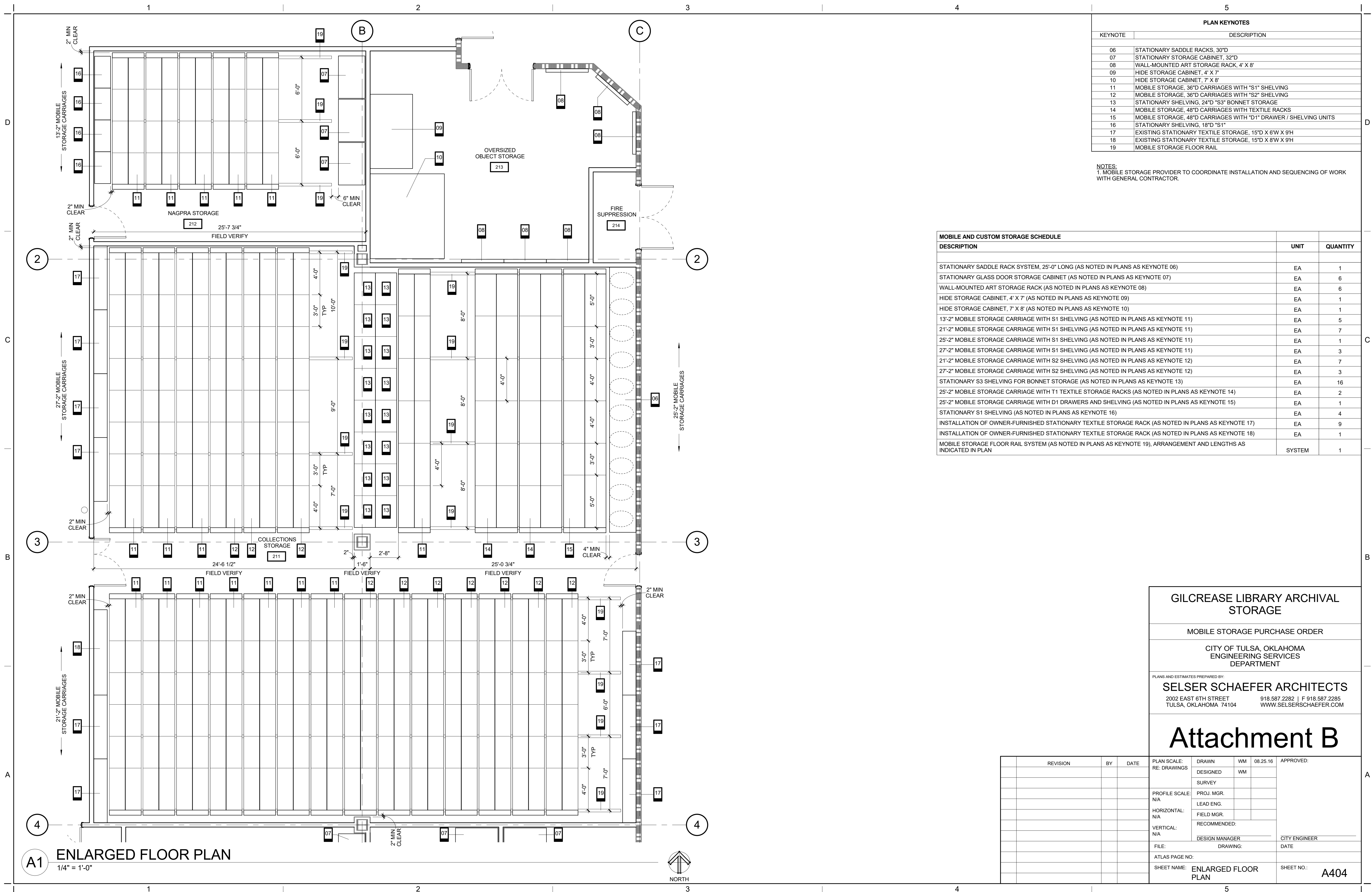


C:\Users\shilly\Documents\Reel\Local\Copies\1412\_Gilcrease\_Library\ArchivalStorage-Act\_Cemint\_v16\_01.dwg

WM

8/25/2016 3:31:01 PM



PLAN KEYNOTES	
KEYNOTE	DESCRIPTION
06	STATIONARY SADDLE RACKS, 30"D
07	STATIONARY STORAGE CABINET, 32"D
08	WALL-MOUNTED ART STORAGE RACK, 4' X 8'
09	HIDE STORAGE CABINET, 4' X 7'
10	HIDE STORAGE CABINET, 7' X 8'
11	MOBILE STORAGE, 36"D CARRIAGES WITH "S1" SHELVING
12	MOBILE STORAGE, 36"D CARRIAGES WITH "S2" SHELVING
13	STATIONARY SHELVING, 24"D "S3" BONNET STORAGE
14	MOBILE STORAGE, 48"D CARRIAGES WITH TEXTILE RACKS
15	MOBILE STORAGE, 48"D CARRIAGES WITH "D1" DRAWER / SHELVING UNITS
16	STATIONARY SHELVING, 18"D "S1"
17	EXISTING STATIONARY TEXTILE STORAGE, 15"D X 6"W X 9"H
18	EXISTING STATIONARY TEXTILE STORAGE, 15"D X 8"W X 9"H
19	MOBILE STORAGE FLOOR RAIL

NOTES:  
1. MOBILE STORAGE PROVIDER TO COORDINATE INSTALLATION AND SEQUENCING OF WORK WITH GENERAL CONTRACTOR.

MOBILE AND CUSTOM STORAGE SCHEDULE		
DESCRIPTION	UNIT	QUANTITY
STATIONARY SADDLE RACK SYSTEM, 25'-0" LONG (AS NOTED IN PLANS AS KEYNOTE 06)	EA	1
STATIONARY GLASS DOOR STORAGE CABINET (AS NOTED IN PLANS AS KEYNOTE 07)	EA	6
WALL-MOUNTED ART STORAGE RACK (AS NOTED IN PLANS AS KEYNOTE 08)	EA	6
HIDE STORAGE CABINET, 4' X 7' (AS NOTED IN PLANS AS KEYNOTE 09)	EA	1
HIDE STORAGE CABINET, 7' X 8' (AS NOTED IN PLANS AS KEYNOTE 10)	EA	1
13'-2" MOBILE STORAGE CARRIAGE WITH S1 SHELVING (AS NOTED IN PLANS AS KEYNOTE 11)	EA	5
21'-2" MOBILE STORAGE CARRIAGE WITH S1 SHELVING (AS NOTED IN PLANS AS KEYNOTE 11)	EA	7
25'-2" MOBILE STORAGE CARRIAGE WITH S1 SHELVING (AS NOTED IN PLANS AS KEYNOTE 11)	EA	1
27'-2" MOBILE STORAGE CARRIAGE WITH S1 SHELVING (AS NOTED IN PLANS AS KEYNOTE 11)	EA	3
21'-2" MOBILE STORAGE CARRIAGE WITH S2 SHELVING (AS NOTED IN PLANS AS KEYNOTE 12)	EA	7
27'-2" MOBILE STORAGE CARRIAGE WITH S2 SHELVING (AS NOTED IN PLANS AS KEYNOTE 12)	EA	3
STATIONARY S3 SHELVING FOR BONNET STORAGE (AS NOTED IN PLANS AS KEYNOTE 13)	EA	16
25'-2" MOBILE STORAGE CARRIAGE WITH T1 TEXTILE STORAGE RACKS (AS NOTED IN PLANS AS KEYNOTE 14)	EA	2
25'-2" MOBILE STORAGE CARRIAGE WITH D1 DRAWERS AND SHELVING (AS NOTED IN PLANS AS KEYNOTE 15)	EA	1
STATIONARY S1 SHELVING (AS NOTED IN PLANS AS KEYNOTE 16)	EA	4
INSTALLATION OF OWNER-FURNISHED STATIONARY TEXTILE STORAGE RACK (AS NOTED IN PLANS AS KEYNOTE 17)	EA	9
INSTALLATION OF OWNER-FURNISHED STATIONARY TEXTILE STORAGE RACK (AS NOTED IN PLANS AS KEYNOTE 18)	EA	1
MOBILE STORAGE FLOOR RAIL SYSTEM (AS NOTED IN PLANS AS KEYNOTE 19), ARRANGEMENT AND LENGTHS AS INDICATED IN PLAN	SYSTEM	1

**GILCREASE LIBRARY ARCHIVAL STORAGE**

MOBILE STORAGE PURCHASE ORDER

CITY OF TULSA, OKLAHOMA  
ENGINEERING SERVICES  
DEPARTMENT

PLANS AND ESTIMATES PREPARED BY:  
**SELSE SCHAEFER ARCHITECTS**  
2002 EAST 6TH STREET  
TULSA, OKLAHOMA 74104      918.587.2282 | F 918.587.2285  
WWW.SELSERSCHAEFER.COM

# Attachment B

REVISION	BY	DATE	DESCRIPTION

PLAN SCALE: RE: DRAWINGS	DRAWN: WM	08.25.16	APPROVED:
	DESIGNED: WM		
	SURVEY:		
PROFILE SCALE: N/A	PROJ. MGR.		
HORIZONTAL: N/A	LEAD ENG.		
VERTICAL: N/A	FIELD MGR.		
	RECOMMENDED:		
	DESIGN MANAGER		CITY ENGINEER
FILE:	DRAWING:		DATE:
ATLAS PAGE NO:			
SHEET NAME: ENLARGED FLOOR PLAN			SHEET NO: A404

**A1 ENLARGED FLOOR PLAN**  
1/4" = 1'-0"

