



TULSA INTERNATIONAL AIRPORT ECONOMIC DEVELOPMENT PROJECT PLAN

ELIGIBILITY REPORT

A PROJECT OF:

THE CITY OF TULSA

IN COOPERATION WITH:

TULSA COUNTY

TULSA INTERNATIONAL AIRPORT DEVELOPMENT TRUST

TULSA AIRPORTS IMPROVEMENT TRUST

WITH THE ASSISTANCE OF:

JEFF MULDER, A.A.E. – DIRECTOR OF AIRPORTS

ALEXIS HIGGINS, A.A.E. – DEPUTY DIRECTOR OF MARKETING

JEFF HOUGH, P.E. – DEPUTY DIRECTOR OF ENGINEERING AND FACILITIES

NANCY MCNAIR – AIRPORT LEGAL COUNSEL

CARL REMUS – DEPUTY DIRECTOR OF ADMINISTRATION AND FINANCE

AND:



CENTER FOR ECONOMIC
DEVELOPMENT LAW

LESLIE V. BATCHELOR, PRESIDENT | 301 NORTH HARVEY, SUITE 100
(405) 232-3606 | OKLAHOMA CITY, OK 73102

DESCRIPTION OF PROJECT

Tulsa International Airport (“Airport”) is a hub of aerospace activity for the region, and it seeks to continue and expand its support of the growth of this industry by generating development on the Airport’s 700+ acres of property. Aerospace is one of Oklahoma’s largest industries, and Tulsa is ranked eighth nationally for the size of its aerospace engines manufacturing cluster and twentieth for its defense-related cluster. The Airport’s central location in the Midwest is easily accessible by a multi-modal transportation network.

The Tulsa International Airport Economic Development Project Plan (“Project Plan”) seeks to provide a planning framework and funding mechanism for a substantial portion of the local public investment required to support the area’s aerospace economy and to generate additional, related private investment in the area. The public investments planned include: project planning and design; construction and/or repair of public improvements, streetscapes, utilities, and other public infrastructure and facilities; preparation of development sites; and the negotiation and procurement of private development commitments. Funding for the public investments is expected to be generated by the implementation of five tax increment districts (discussed below).

The principal objectives of the Project are:

- A. To facilitate the development of property at the Airport, thus helping to diversify the revenue sources that support the ongoing costs of operating, maintaining, and improving Airport facilities.
- B. To provide a funding mechanism for a substantial portion of the local public investment required to support the Airport’s aerospace economy.
- C. To support the existing major businesses and employers in the Project Area.
- D. To serve as a catalyst for retaining or expanding employment, to attract major investment in the area, and reverse economic stagnation.
- E. To preserve and enhance the tax base and make possible investment, development, and economic growth that would otherwise be difficult or even impossible without the Project and the apportionment of incremental tax revenues.
- F. To stimulate private commitments to invest and reinvest in the Project Area.
- G. To create and expand commercial activities in the area, including hotels, retail, and travel and tourism related attractions and amenities.

BOUNDARIES OF PROJECT AREA AND INCREMENT DISTRICTS

- A. Project Area Boundaries.

The Project Area is the area in which Project activities will take place and Project Costs will be incurred. The Project Area can be generally described as the area bounded by North Port Road, East 56th Street North, Highway 169, portions of Pine Street and Interstate-244, and extending just a little west of the North Sheridan Road. The Project Area is shown on Exhibit A, and a legal description of the Project Area is contained on Exhibit B.

B. Increment District Boundaries.

The Increment Districts will generate the revenues to assist in paying or financing eligible Project Costs, and are referred to in the Project Plan as Increment Districts A, B, C, D, and E, (and collectively referred to as the “Increment Districts”). Once the commencement date each Increment District is determined, the Increment District shall be renamed as “Increment District Number _____, City of Tulsa” by assigning the next consecutive number for increment districts of the City of Tulsa, in accordance with Section 856(3) of the Oklahoma Local Development Act [62 O.S. § 850, *et seq.*] (“Act”). The boundaries of each Increment District are shown on Exhibit A, and legal descriptions of each Increment District are contained on Exhibit C.

GUIDELINES FOR USE OF DEVELOPMENT TOOLS

The Act expresses the intent of the Oklahoma Legislature that the development tools established by the Act be used in accordance with certain guidelines.

A. In accordance with the legislative guideline found in Section 852(2) of the Act, areas where investment, development, and economic growth would occur anyway have been excluded from the Project Area and Increment Districts.

B. In accordance with the legislative guideline found in Section 852(4) of the Act, the Project Area and Increment Districts lie within an Enterprise Zone designated under the Oklahoma Enterprise Zone Act.

ELIGIBILITY OF PROJECT AREA AND INCREMENT DISTRICTS

In order to establish a tax increment finance district, the Local Development Act requires that the governing body adopt an ordinance that contains a finding that the Project Area meets one of the following criteria: (1) is a reinvestment area, (2) is a historic preservation area, (3) is an enterprise area, or (4) is a combination of the areas specified in divisions (1), (2) and (3) of this subparagraph. 62 O.S. § 856(B)(4)(a). The Project Area qualifies as a combination of areas.

A. Enterprise Area

The Project Area qualifies as an enterprise area under the Act. The Project Area is located in United States Census Tracts 111, 59, and 82 in Tulsa County. Each of these Census Tracts have been designated Enterprise Zones by the Oklahoma Department of Commerce effective July 1, 2015 through June 30, 2016. Therefore, the area meets the relevant ground for eligibility for the Project Area as an enterprise area. Sections 853(5)–(6) of the Act define “enterprise areas” as follows:

- 5. “Enterprise area” means any area within a designated state or federal enterprise zone;
- 6. “Enterprise zone” means an enterprise zone as designed by the Department of Commerce pursuant to the provisions of Section 690.3 of this title or as designated by the federal government[.]

A current map of Oklahoma Department of Commerce Enterprise Zones in the vicinity of the Airport for the period effective July 1, 2015 through June 30, 2016, is attached as Exhibit D.

B. Factors Reflecting Additional Eligibility

The Project Area also qualifies as a reinvestment area under the Act. 62 O.S. §853(17) defines “reinvestment area” as:

any area located within the limits of a city, town or county requiring public improvements, including but not limited to transportation-related projects identified by any transportation authority pursuant to Section 1370.7 of Title 68 of the Oklahoma Statutes, to reverse economic stagnation or decline, to serve as a catalyst for retaining or expanding employment, to attract major investment in the area or to preserve or enhance the tax base. . .

The Project Area qualifies as a reinvestment area because it lies in an area requiring public improvements to serve as a catalyst for expanding employment, to attract major investment in the area, and to enhance the tax base. Outside of the area used for the Airport operations and existing tenants, the area is predominantly unproductive, undeveloped and underdeveloped in accordance with Article 10, § 6C of the Oklahoma Constitution.

EXHIBITS

- A. Project Area and Increment Districts Boundaries Map.
- B. Project Area Legal Description.
- C. Increment Districts Legal Descriptions.
- D. Tulsa International Airport-Area Enterprise Zones.

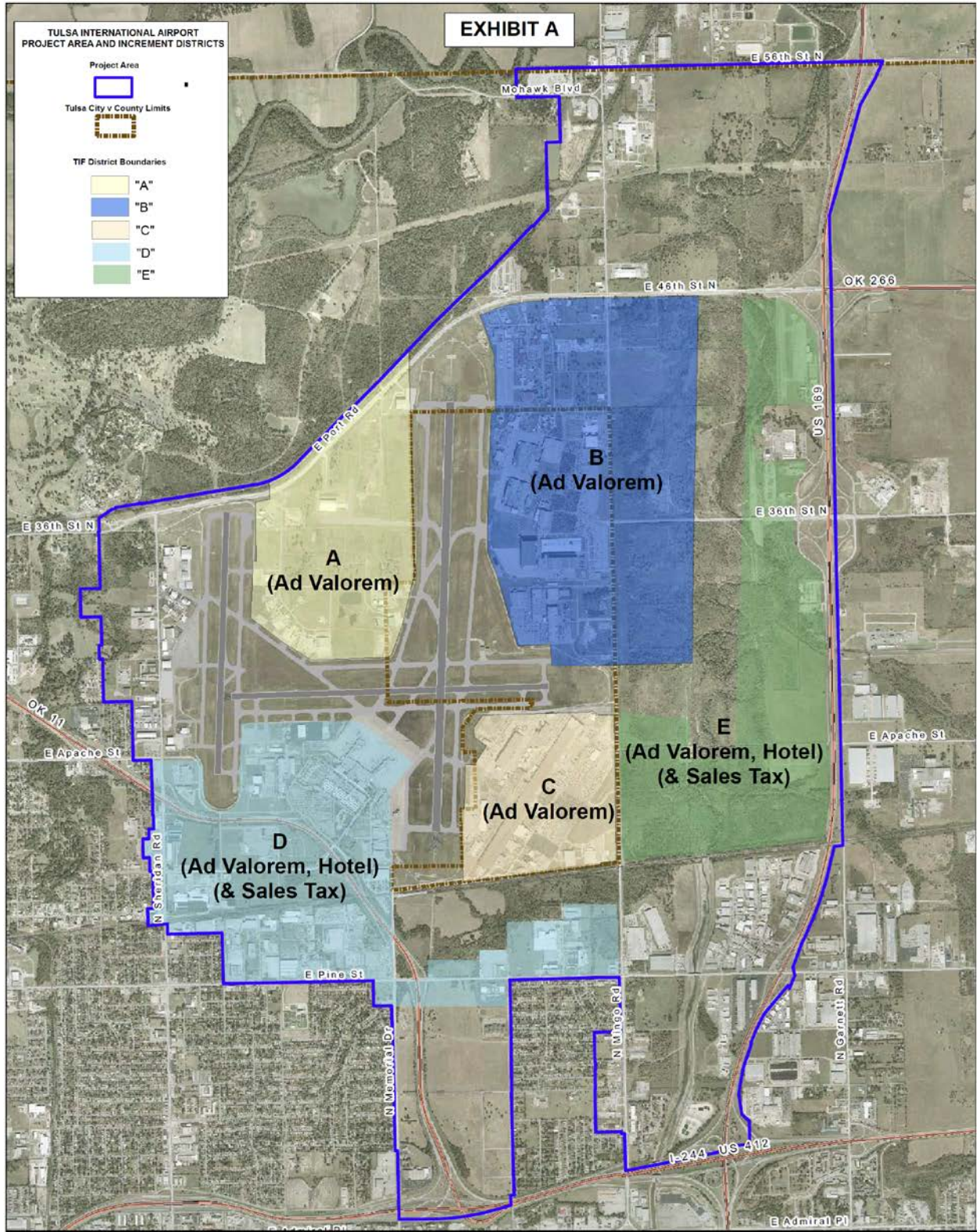


EXHIBIT B

PROJECT AREA LEGAL DESCRIPTION

A TRACT OF LAND BEING A PART OF SECTIONS 7, 8, 18, 19, 30, and 31 in Township 20 N., Range 14 E., TULSA COUNTY, OKLAHOMA, and SECTIONS 12, 13, 14, 15, 22, 23, 24, 25, 26, 27, 35 and 36 in TOWNSHIP 20 N., RANGE 13 E., TULSA COUNTY, OKLAHOMA,
MORE PARTICULARLY DESCRIBED TO WIT:

COMMENCING AT THE SOUTHWEST CORNER OF SECTION 26:
THENCE EAST A DISTANCE OF 1,317.095 FEET TO THE
"POINT OF BEGINNING";

THENCE N. 88°50'32" E. A DISTANCE OF 3,478.59 FEET;
THENCE S. 02°03'10" E. A DISTANCE OF 52.17 FEET;
THENCE S. 01°15'47" E. A DISTANCE OF 79.47 FEET;
THENCE S. 01°15'40" E. A DISTANCE OF 64.62 FEET;
THENCE S. 01°15'53" E. A DISTANCE OF 64.34 FEET;
THENCE S. 01°16'10" E. A DISTANCE OF 68.04 FEET;
THENCE S. 01°16'29" E. A DISTANCE OF 78.83 FEET;
THENCE S. 01°16'47" E. A DISTANCE OF 95.80 FEET;
THENCE S. 01°32'12" E. A DISTANCE OF 86.92 FEET;
THENCE N. 88°49'51" E. A DISTANCE OF 73.53 FEET;
THENCE N. 88°49'44" E. A DISTANCE OF 88.77 FEET;
THENCE N. 88°49'29" E. A DISTANCE OF 56.74 FEET;
THENCE N. 88°49'07" E. A DISTANCE OF 63.13 FEET;
THENCE N. 88°48'36" E. A DISTANCE OF 61.84 FEET;
THENCE N. 88°41'33" E. A DISTANCE OF 65.24 FEET;
THENCE S. 04°35'21" E. A DISTANCE OF 121.77 FEET;
THENCE S. 00°14'50" E. A DISTANCE OF 49.18 FEET;
THENCE S. 01°32'36" E. A DISTANCE OF 124.53 FEET;
THENCE S. 01°32'28" E. A DISTANCE OF 116.65 FEET;
THENCE S. 01°23'17" E. A DISTANCE OF 49.36 FEET;
THENCE S. 01°20'42" E. A DISTANCE OF 123.12 FEET;
THENCE S. 01°20'56" E. A DISTANCE OF 117.94 FEET;
THENCE S. 14°03'18" E. A DISTANCE OF 30.58 FEET;
THENCE S. 14°03'18" E. A DISTANCE OF 31.14 FEET;
THENCE S. 01°06'28" E. A DISTANCE OF 113.93 FEET;
THENCE S. 01°06'18" E. A DISTANCE OF 121.03 FEET;
THENCE S. 02°08'03" E. A DISTANCE OF 48.37 FEET;
THENCE S. 00°01'41" E. A DISTANCE OF 119.45 FEET;
THENCE S. 02°14'55" E. A DISTANCE OF 118.52 FEET;
THENCE S. 02°14'55" E. A DISTANCE OF 52.42 FEET;
THENCE S. 01°29'28" E. A DISTANCE OF 119.12 FEET;
THENCE S. 01°29'22" E. A DISTANCE OF 122.70 FEET;

THENCE S. 00°04'02" E. A DISTANCE OF 47.72 FEET;
THENCE S. 00°48'55" E. A DISTANCE OF 120.13 FEET;
THENCE S. 01°42'30" E. A DISTANCE OF 118.31 FEET;
THENCE S. 01°42'30" E. A DISTANCE OF 50.28 FEET;
THENCE S. 01°29'23" E. A DISTANCE OF 139.49 FEET;
THENCE S. 01°18'13" E. A DISTANCE OF 137.02 FEET;
THENCE S. 01°09'46" E. A DISTANCE OF 50.31 FEET;
THENCE S. 01°09'51" E. A DISTANCE OF 132.21 FEET;
THENCE S. 01°09'22" E. A DISTANCE OF 163.36 FEET;
THENCE S. 01°03'04" E. A DISTANCE OF 63.42 FEET;
THENCE S. 00°55'17" E. A DISTANCE OF 165.70 FEET;
THENCE S. 00°55'40" E. A DISTANCE OF 130.89 FEET;
THENCE S. 01°23'22" E. A DISTANCE OF 50.10 FEET;
THENCE S. 01°19'17" E. A DISTANCE OF 130.89 FEET;
THENCE S. 01°29'02" E. A DISTANCE OF 123.77 FEET;
THENCE S. 01°29'02" E. A DISTANCE OF 51.99 FEET;
THENCE S. 00°46'50" E. A DISTANCE OF 66.18 FEET;
THENCE S. 00°46'24" E. A DISTANCE OF 54.30 FEET;
THENCE N. 88°53'35" E. A DISTANCE OF 53.73 FEET;
THENCE S. 01°20'28" E. A DISTANCE OF 977.80 FEET;
THENCE S. 01°20'33" E. A DISTANCE OF 345.70 FEET;
THENCE S. 01°17'27" E. A DISTANCE OF 270.23 FEET;
THENCE S. 89°37'01" E. A DISTANCE OF 50.16 FEET;
THENCE S. 89°37'01" E. A DISTANCE OF 289.98 FEET;
THENCE S. 89°37'01" E. A DISTANCE OF 76.14 FEET;
THENCE N. 88°56'25" E. A DISTANCE OF 334.22 FEET;
THENCE N. 88°53'45" E. A DISTANCE OF 176.63 FEET;
THENCE N. 86°29'24" E. A DISTANCE OF 203.83 FEET;
THENCE N. 84°21'20" E. A DISTANCE OF 187.43 FEET;
THENCE N. 82°30'38" E. A DISTANCE OF 221.21 FEET;
THENCE N. 79°47'31" E. A DISTANCE OF 276.84 FEET;
THENCE N. 78°10'12" E. A DISTANCE OF 178.01 FEET;
THENCE N. 74°34'10" E. A DISTANCE OF 325.11 FEET;
THENCE N. 73°45'52" E. A DISTANCE OF 122.57 FEET;
THENCE N. 74°39'22" E. A DISTANCE OF 186.06 FEET;
THENCE N. 01°50'42" W. A DISTANCE OF 232.14 FEET;
THENCE N. 81°42'51" E. A DISTANCE OF 42.30 FEET;
THENCE S. 87°00'28" E. A DISTANCE OF 39.32 FEET;
THENCE N. 01°25'06" W. A DISTANCE OF 99.23 FEET;
THENCE N. 01°24'48" W. A DISTANCE OF 101.34 FEET;
THENCE N. 01°24'48" W. A DISTANCE OF 98.99 FEET;
THENCE N. 01°24'48" W. A DISTANCE OF 98.12 FEET;
THENCE N. 01°15'15" W. A DISTANCE OF 59.46 FEET;
THENCE N. 01°39'40" W. A DISTANCE OF 134.64 FEET;

THENCE N. 01°39'40" W. A DISTANCE OF 164.22 FEET;
THENCE N. 01°39'35" W. A DISTANCE OF 166.04 FEET;
THENCE N. 01°39'35" W. A DISTANCE OF 133.15 FEET;
THENCE N. 00°48'13" W. A DISTANCE OF 61.65 FEET;
THENCE N. 01°39'25" W. A DISTANCE OF 136.16 FEET;
THENCE N. 01°39'28" W. A DISTANCE OF 161.97 FEET;
THENCE N. 01°39'28" W. A DISTANCE OF 83.60 FEET;
THENCE N. 01°39'39" W. A DISTANCE OF 85.10 FEET;
THENCE N. 01°39'35" W. A DISTANCE OF 135.86 FEET;
THENCE N. 01°56'19" W. A DISTANCE OF 60.34 FEET;
THENCE N. 01°17'33" W. A DISTANCE OF 135.06 FEET;
THENCE N. 01°17'38" W. A DISTANCE OF 205.07 FEET;
THENCE N. 01°17'38" W. A DISTANCE OF 129.77 FEET;
THENCE N. 01°17'38" W. A DISTANCE OF 129.66 FEET;
THENCE N. 08°11'37" E. A DISTANCE OF 31.58 FEET;
THENCE N. 08°12'08" E. A DISTANCE OF 24.68 FEET;
THENCE N. 00°41'34" W. A DISTANCE OF 117.34 FEET;
THENCE N. 00°41'34" W. A DISTANCE OF 123.30 FEET;
THENCE N. 01°23'50" W. A DISTANCE OF 50.02 FEET;
THENCE N. 00°06'41" E. A DISTANCE OF 119.01 FEET;
THENCE N. 01°41'48" W. A DISTANCE OF 123.45 FEET;
THENCE N. 01°41'48" W. A DISTANCE OF 52.11 FEET;
THENCE N. 00°56'53" W. A DISTANCE OF 118.63 FEET;
THENCE N. 00°56'50" W. A DISTANCE OF 124.00 FEET;
THENCE N. 00°22'58" W. A DISTANCE OF 51.81 FEET;
THENCE N. 00°22'58" W. A DISTANCE OF 118.03 FEET;
THENCE N. 01°03'55" W. A DISTANCE OF 125.61 FEET;
THENCE N. 03°08'47" E. A DISTANCE OF 50.23 FEET;
THENCE N. 00°06'07" W. A DISTANCE OF 131.17 FEET;
THENCE N. 01°26'23" W. A DISTANCE OF 132.37 FEET;
THENCE N. 01°26'23" W. A DISTANCE OF 58.49 FEET;
THENCE N. 00°51'33" W. A DISTANCE OF 133.13 FEET;
THENCE N. 00°51'33" W. A DISTANCE OF 124.59 FEET;
THENCE N. 02°51'37" W. A DISTANCE OF 45.58 FEET;
THENCE N. 01°22'00" W. A DISTANCE OF 137.54 FEET;
THENCE N. 01°08'29" W. A DISTANCE OF 130.97 FEET;
THENCE N. 01°24'07" W. A DISTANCE OF 50.12 FEET;
THENCE N. 01°39'14" W. A DISTANCE OF 134.54 FEET;
THENCE N. 01°39'14" W. A DISTANCE OF 51.06 FEET;
THENCE N. 00°41'14" W. A DISTANCE OF 77.63 FEET;
THENCE N. 00°41'14" W. A DISTANCE OF 57.64 FEET;
THENCE N. 01°57'42" W. A DISTANCE OF 137.77 FEET;
THENCE S. 87°31'13" E. A DISTANCE OF 63.06 FEET;
THENCE N. 88°39'46" E. A DISTANCE OF 57.25 FEET;

THENCE N. 88°38'47" E. A DISTANCE OF 59.20 FEET;
THENCE N. 88°39'48" E. A DISTANCE OF 60.44 FEET;
THENCE N. 88°39'25" E. A DISTANCE OF 61.28 FEET;
THENCE N. 88°38'56" E. A DISTANCE OF 63.72 FEET;
THENCE N. 88°40'11" E. A DISTANCE OF 57.15 FEET;
THENCE N. 88°38'39" E. A DISTANCE OF 57.71 FEET;
THENCE N. 88°39'32" E. A DISTANCE OF 62.54 FEET;
THENCE N. 88°39'19" E. A DISTANCE OF 60.88 FEET;
THENCE N. 88°39'24" E. A DISTANCE OF 50.81 FEET;
THENCE N. 88°39'24" E. A DISTANCE OF 52.83 FEET;
THENCE N. 88°39'00" E. A DISTANCE OF 63.61 FEET;
THENCE N. 87°29'18" E. A DISTANCE OF 59.45 FEET;
THENCE N. 88°22'01" E. A DISTANCE OF 70.81 FEET;
THENCE N. 88°22'35" E. A DISTANCE OF 61.66 FEET;
THENCE N. 88°22'50" E. A DISTANCE OF 62.68 FEET;
THENCE N. 88°21'49" E. A DISTANCE OF 58.45 FEET;
THENCE N. 88°23'28" E. A DISTANCE OF 61.24 FEET;
THENCE N. 88°21'44" E. A DISTANCE OF 60.23 FEET;
THENCE N. 88°22'32" E. A DISTANCE OF 62.99 FEET;
THENCE N. 88°22'54" E. A DISTANCE OF 57.60 FEET;
THENCE N. 88°22'01" E. A DISTANCE OF 65.47 FEET;
THENCE N. 88°23'21" E. A DISTANCE OF 60.95 FEET;
THENCE N. 88°21'45" E. A DISTANCE OF 61.28 FEET;
THENCE N. 88°22'47" E. A DISTANCE OF 60.97 FEET;
THENCE N. 88°22'48" E. A DISTANCE OF 64.76 FEET;
THENCE N. 88°21'39" E. A DISTANCE OF 56.65 FEET;
THENCE N. 88°23'38" E. A DISTANCE OF 62.26 FEET;
THENCE N. 88°22'31" E. A DISTANCE OF 63.73 FEET;
THENCE N. 88°21'55" E. A DISTANCE OF 64.64 FEET;
THENCE N. 88°23'04" E. A DISTANCE OF 71.78 FEET;
THENCE N. 89°00'18" E. A DISTANCE OF 59.68 FEET;
THENCE N. 89°01'35" E. A DISTANCE OF 151.60 FEET;
THENCE N. 89°06'48" E. A DISTANCE OF 162.73 FEET;
THENCE N. 89°08'49" E. A DISTANCE OF 212.71 FEET;
THENCE S. 01°49'31" E. A DISTANCE OF 142.91 FEET;
THENCE S. 01°16'37" E. A DISTANCE OF 990.38 FEET;
THENCE S. 01°16'37" E. A DISTANCE OF 129.75 FEET;
THENCE S. 88°37'20" W. A DISTANCE OF 612.23 FEET;
THENCE S. 00°56'19" E. A DISTANCE OF 687.51 FEET;
THENCE S. 28°37'17" E. A DISTANCE OF 28.20 FEET;
THENCE S. 00°21'21" E. A DISTANCE OF 159.95 FEET;
THENCE S. 88°21'00" W. A DISTANCE OF 11.47 FEET;
THENCE S. 00°56'24" E. A DISTANCE OF 136.20 FEET;
THENCE S. 00°56'24" E. A DISTANCE OF 47.85 FEET;

THENCE S. 00°29'43" E. A DISTANCE OF 250.92 FEET;
THENCE S. 00°34'11" E. A DISTANCE OF 30.99 FEET;
THENCE S. 88°21'28" W. A DISTANCE OF 6.14 FEET;
THENCE S. 00°09'14" W. A DISTANCE OF 31.25 FEET;
THENCE S. 01°09'35" E. A DISTANCE OF 634.28 FEET;
THENCE S. 01°09'38" E. A DISTANCE OF 322.70 FEET;
THENCE N. 88°36'20" E. A DISTANCE OF 597.66 FEET;
THENCE S. 01°13'26" E. A DISTANCE OF 46.98 FEET;
THENCE N. 89°57'21" E. A DISTANCE OF 72.16 FEET;
THENCE S. 01°18'21" E. A DISTANCE OF 862.01 FEET;
THENCE N. 78°50'51" E. A DISTANCE OF 1,808.86 FEET;
THENCE N. 77°37'51" E. A DISTANCE OF 527.26 FEET;
THENCE N. 78°10'17" E. A DISTANCE OF 269.84 FEET;
THENCE N. 01°07'22" W. A DISTANCE OF 74.90 FEET;
THENCE N. 87°38'28" E. A DISTANCE OF 337.02 FEET;
THENCE N. 01°17'29" W. A DISTANCE OF 546.09 FEET;
THENCE N. 46°58'59" W. A DISTANCE OF 122.65 FEET;
THENCE N. 46°58'59" W. A DISTANCE OF 113.22 FEET;
THENCE N. 09°01'25" W. A DISTANCE OF 460.30 FEET;
THENCE N. 07°57'18" E. A DISTANCE OF 188.28 FEET;
THENCE N. 10°08'24" E. A DISTANCE OF 411.52 FEET;
THENCE N. 17°58'32" E. A DISTANCE OF 238.32 FEET;
THENCE N. 17°58'10" E. A DISTANCE OF 97.61 FEET;
THENCE N. 17°57'44" E. A DISTANCE OF 295.87 FEET;
THENCE N. 62°37'39" W. A DISTANCE OF 14.78 FEET;
THENCE N. 10°53'27" E. A DISTANCE OF 21.73 FEET;
THENCE N. 22°16'09" E. A DISTANCE OF 310.10 FEET;
THENCE N. 26°04'16" E. A DISTANCE OF 398.00 FEET;
THENCE N. 40°03'14" E. A DISTANCE OF 877.40 FEET;
THENCE S. 64°38'36" E. A DISTANCE OF 34.31 FEET;
THENCE S. 01°25'13" E. A DISTANCE OF 53.02 FEET;
THENCE N. 22°53'54" E. A DISTANCE OF 327.28 FEET;
THENCE N. 12°24'33" W. A DISTANCE OF 196.67 FEET;
THENCE N. 19°58'56" E. A DISTANCE OF 293.65 FEET;
THENCE N. 19°59'28" E. A DISTANCE OF 292.29 FEET;
THENCE N. 26°36'52" E. A DISTANCE OF 200.19 FEET;
THENCE N. 24°04'13" E. A DISTANCE OF 171.231 FEET;
THENCE N. 24°00'57" E. A DISTANCE OF 276.98 FEET;
THENCE N. 20°44'13" E. A DISTANCE OF 97.45 FEET;
THENCE N. 20°14'29" E. A DISTANCE OF 419.03 FEET;
THENCE N. 16°42'50" E. A DISTANCE OF 458.04 FEET;
THENCE N. 12°51'56" E. A DISTANCE OF 502.35 FEET;
THENCE N. 88°44'43" E. A DISTANCE OF 6.14 FEET;
THENCE N. 12°50'31" E. A DISTANCE OF 259.52 FEET;

THENCE N. 83°24'46" E. A DISTANCE OF 201.62 FEET;
THENCE N. 01°14'48" W. A DISTANCE OF 206.44 FEET;
THENCE N. 01°14'33" W. A DISTANCE OF 379.26 FEET;
THENCE N. 01°14'33" W. A DISTANCE OF 502.85 FEET;
THENCE N. 01°14'33" W. A DISTANCE OF 319.62 FEET;
THENCE N. 01°14'49" W. A DISTANCE OF 961.75 FEET;
THENCE N. 01°21'44" W. A DISTANCE OF 2,640.35 FEET;
THENCE N. 01°21'47" W. A DISTANCE OF 308.39 FEET;
THENCE N. 01°21'44" W. A DISTANCE OF 229.56 FEET;
THENCE N. 01°21'44" W. A DISTANCE OF 420.53 FEET;
THENCE N. 01°21'10" W. A DISTANCE OF 363.81 FEET;
THENCE N. 01°21'52" W. A DISTANCE OF 1,318.04 FEET;
THENCE N. 01°01'47" W. A DISTANCE OF 412.77 FEET;
THENCE N. 01°01'47" W. A DISTANCE OF 912.36 FEET;
THENCE N. 01°01'47" W. A DISTANCE OF 313.97 FEET;
THENCE N. 01°01'55" W. A DISTANCE OF 345.40 FEET;
THENCE N. 01°01'55" W. A DISTANCE OF 662.25 FEET;
THENCE N. 01°01'40" W. A DISTANCE OF 1,158.22 FEET;
THENCE N. 01°01'38" W. A DISTANCE OF 158.48 FEET;
THENCE N. 01°02'06" W. A DISTANCE OF 1,346.59 FEET;
THENCE N. 01°27'12" W. A DISTANCE OF 1,099.05 FEET;
THENCE N. 01°26'45" W. A DISTANCE OF 595.01 FEET;
THENCE N. 16°02'50" E. A DISTANCE OF 1,175.84 FEET;
THENCE N. 15°23'28" E. A DISTANCE OF 187.32 FEET;
THENCE N. 15°25'23" E. A DISTANCE OF 1,305.73 FEET;
THENCE N. 29°19'08" E. A DISTANCE OF 709.82 FEET;
THENCE N. 23°35'59" E. A DISTANCE OF 434.29 FEET;
THENCE S. 88°45'36" W. A DISTANCE OF 516.51 FEET;
THENCE S. 88°43'47" W. A DISTANCE OF 3,078.43 FEET;
THENCE S. 88°44'26" W. A DISTANCE OF 318.59 FEET;
THENCE S. 88°41'31" W. A DISTANCE OF 61.98 FEET;
THENCE S. 88°44'12" W. A DISTANCE OF 914.86 FEET;
THENCE S. 88°44'26" W. A DISTANCE OF 967.16 FEET;
THENCE S. 88°44'26" W. A DISTANCE OF 111.01 FEET;
THENCE S. 88°43'59" W. A DISTANCE OF 577.40 FEET;
THENCE S. 88°51'42" W. A DISTANCE OF 330.32 FEET;
THENCE S. 88°51'42" W. A DISTANCE OF 69.24 FEET;
THENCE S. 88°51'27" W. A DISTANCE OF 262.34 FEET;
THENCE S. 88°51'14" W. A DISTANCE OF 658.45 FEET;
THENCE S. 01°12'47" E. A DISTANCE OF 658.91 FEET;
THENCE N. 88°47'32" E. A DISTANCE OF 332.52 FEET;
THENCE S. 01°20'23" E. A DISTANCE OF 1,060.79 FEET;
THENCE S. 88°43'13" W. A DISTANCE OF 330.15 FEET;
THENCE S. 01°16'17" E. A DISTANCE OF 922.81 FEET;

THENCE S. 01°41'39" E. A DISTANCE OF 210.02 FEET;
THENCE S. 01°53'26" E. A DISTANCE OF 156.28 FEET;
THENCE S. 01°53'26" E. A DISTANCE OF 189.98 FEET;
THENCE S. 01°01'10" E. A DISTANCE OF 103.78 FEET;
THENCE S. 88°51'01" W. A DISTANCE OF 15.62 FEET;
THENCE S. 41°51'46" W. A DISTANCE OF 295.82 FEET;
THENCE S. 41°51'46" W. A DISTANCE OF 164.67 FEET;
THENCE S. 41°51'47" W. A DISTANCE OF 41.01 FEET;
THENCE N. 45°24'46" W. A DISTANCE OF 25.08 FEET;
THENCE S. 43°37'13" W. A DISTANCE OF 289.49 FEET;
THENCE S. 43°37'13" W. A DISTANCE OF 132.41 FEET;
THENCE S. 43°37'15" W. A DISTANCE OF 227.35 FEET;
THENCE S. 43°37'16" W. A DISTANCE OF 209.54 FEET;
THENCE S. 43°37'16" W. A DISTANCE OF 216.32 FEET;
THENCE S. 43°37'16" W. A DISTANCE OF 274.90 FEET;
THENCE S. 46°36'52" W. A DISTANCE OF 1,006.89 FEET;
THENCE S. 45°41'20" W. A DISTANCE OF 778.49 FEET;
THENCE S. 43°36'43" W. A DISTANCE OF 931.39 FEET;
THENCE S. 43°36'43" W. A DISTANCE OF 947.79 FEET;
THENCE S. 44°56'27" W. A DISTANCE OF 1,108.43 FEET;
THENCE S. 88°50'24" W. A DISTANCE OF 28.91 FEET;
THENCE S. 44°26'39" W. A DISTANCE OF 685.89 FEET;
THENCE S. 44°30'57" W. A DISTANCE OF 569.99 FEET;
THENCE S. 43°56'08" W. A DISTANCE OF 373.68 FEET;
THENCE S. 49°04'30" W. A DISTANCE OF 225.25 FEET;
THENCE S. 56°26'50" W. A DISTANCE OF 237.85 FEET;
THENCE S. 63°02'49" W. A DISTANCE OF 175.05 FEET;
THENCE S. 67°44'22" W. A DISTANCE OF 136.98 FEET;
THENCE S. 70°20'07" W. A DISTANCE OF 19.52 FEET;
THENCE S. 70°20'07" W. A DISTANCE OF 29.49 FEET;
THENCE S. 71°42'13" W. A DISTANCE OF 23.39 FEET;
THENCE S. 71°42'13" W. A DISTANCE OF 53.23 FEET;
THENCE S. 77°47'51" W. A DISTANCE OF 26.05 FEET;
THENCE S. 75°42'18" W. A DISTANCE OF 26.39 FEET;
THENCE S. 76°42'24" W. A DISTANCE OF 23.86 FEET;
THENCE S. 77°36'58" W. A DISTANCE OF 28.93 FEET;
THENCE S. 78°43'20" W. A DISTANCE OF 26.82 FEET;
THENCE S. 79°42'13" W. A DISTANCE OF 25.97 FEET;
THENCE S. 80°42'18" W. A DISTANCE OF 26.39 FEET;
THENCE S. 80°31'24" W. A DISTANCE OF 97.14 FEET;
THENCE S. 80°31'14" W. A DISTANCE OF 120.26 FEET;
THENCE S. 80°31'12" W. A DISTANCE OF 124.48 FEET;
THENCE S. 80°31'14" W. A DISTANCE OF 102.05 FEET;
THENCE S. 80°28'14" W. A DISTANCE OF 212.59 FEET;

THENCE S. 80°35'48" W. A DISTANCE OF 137.79 FEET;
THENCE S. 80°35'48" W. A DISTANCE OF 176.73 FEET;
THENCE S. 80°35'48" W. A DISTANCE OF 214.09 FEET;
THENCE S. 80°21'59" W. A DISTANCE OF 194.39 FEET;
THENCE S. 80°31'12" W. A DISTANCE OF 166.71 FEET;
THENCE S. 80°31'12" W. A DISTANCE OF 177.30 FEET;
THENCE S. 80°31'14" W. A DISTANCE OF 178.32 FEET;
THENCE S. 80°31'12" W. A DISTANCE OF 198.67 FEET;
THENCE S. 80°31'12" W. A DISTANCE OF 255.32 FEET;
THENCE S. 78°45'01" W. A DISTANCE OF 20.38 FEET;
THENCE S. 78°45'40" W. A DISTANCE OF 317.13 FEET;
THENCE N. 14°20'19" W. A DISTANCE OF 20.99 FEET;
THENCE S. 80°01'28" W. A DISTANCE OF 609.29 FEET;
THENCE S. 12°14'36" E. A DISTANCE OF 22.89 FEET;
THENCE S. 79°43'21" W. A DISTANCE OF 82.71 FEET;
THENCE S. 55°44'17" W. A DISTANCE OF 366.23 FEET;
THENCE S. 01°32'24" E. A DISTANCE OF 260.01 FEET;
THENCE S. 01°32'24" E. A DISTANCE OF 58.51 FEET;
THENCE S. 88°47'48" W. A DISTANCE OF 23.28 FEET;
THENCE S. 01°09'21" E. A DISTANCE OF 65.08 FEET;
THENCE N. 88°38'03" E. A DISTANCE OF 11.90 FEET;
THENCE S. 01°27'16" E. A DISTANCE OF 1,254.09 FEET;
THENCE S. 88°48'49" W. A DISTANCE OF 377.65 FEET;
THENCE S. 88°48'51" W. A DISTANCE OF 87.65 FEET;
THENCE S. 01°20'08" E. A DISTANCE OF 661.79 FEET;
THENCE N. 88°51'47" E. A DISTANCE OF 468.89 FEET;
THENCE S. 01°30'29" E. A DISTANCE OF 324.86 FEET;
THENCE S. 01°30'35" E. A DISTANCE OF 334.35 FEET;
THENCE S. 88°48'31" W. A DISTANCE OF 64.78 FEET;
THENCE S. 01°15'42" E. A DISTANCE OF 316.38 FEET;
THENCE N. 88°46'33" E. A DISTANCE OF 75.77 FEET;
THENCE S. 01°24'46" E. A DISTANCE OF 50.38 FEET;
THENCE S. 01°17'55" E. A DISTANCE OF 10.11 FEET;
THENCE S. 01°17'55" E. A DISTANCE OF 598.77 FEET;
THENCE S. 01°17'53" E. A DISTANCE OF 344.12 FEET;
THENCE N. 88°45'58" E. A DISTANCE OF 657.14 FEET;
THENCE S. 02°40'43" E. A DISTANCE OF 29.39 FEET;
THENCE S. 02°40'43" E. A DISTANCE OF 53.55 FEET;
THENCE S. 02°29'47" E. A DISTANCE OF 64.69 FEET;
THENCE S. 01°29'01" E. A DISTANCE OF 16.87 FEET;
THENCE S. 00°34'58" E. A DISTANCE OF 65.53 FEET;
THENCE S. 02°02'15" E. A DISTANCE OF 208.52 FEET;
THENCE S. 00°54'43" W. A DISTANCE OF 38.25 FEET;
THENCE S. 02°47'29" W. A DISTANCE OF 11.85 FEET;

THENCE S. 01°22'49" E. A DISTANCE OF 51.87 FEET;
THENCE S. 01°22'49" E. A DISTANCE OF 48.30 FEET;
THENCE S. 02°47'44" E. A DISTANCE OF 46.08 FEET;
THENCE S. 11°10'05" W. A DISTANCE OF 5.24 FEET;
THENCE S. 01°22'49" E. A DISTANCE OF 50.98 FEET;
THENCE S. 01°22'49" E. A DISTANCE OF 50.70 FEET;
THENCE S. 01°22'49" E. A DISTANCE OF 49.80 FEET;
THENCE S. 03°23'56" E. A DISTANCE OF 41.61 FEET;
THENCE S. 01°12'37" E. A DISTANCE OF 10.42 FEET;
THENCE S. 01°12'37" E. A DISTANCE OF 49.90 FEET;
THENCE S. 01°12'25" E. A DISTANCE OF 18.68 FEET;
THENCE S. 01°12'21" E. A DISTANCE OF 32.72 FEET;
THENCE S. 00°03'21" E. A DISTANCE OF 48.92 FEET;
THENCE S. 01°22'49" E. A DISTANCE OF 51.38 FEET;
THENCE S. 02°08'02" E. A DISTANCE OF 50.14 FEET;
THENCE S. 02°08'02" E. A DISTANCE OF 60.24 FEET;
THENCE S. 00°18'37" W. A DISTANCE OF 37.78FEET;
THENCE S. 01°11'30" E. A DISTANCE OF 77.45 FEET;
THENCE S. 01°20'45" E. A DISTANCE OF 51.12 FEET;
THENCE S. 01°20'45" E. A DISTANCE OF 48.34 FEET;
THENCE N. 89°15'14" E. A DISTANCE OF 54.72 FEET;
THENCE N. 89°13'00" E. A DISTANCE OF 63.49 FEET;
THENCE N. 88°59'46" E. A DISTANCE OF 61.48 FEET;
THENCE S. 88°33'58" E. A DISTANCE OF 56.61 FEET;
THENCE S. 88°32'17" E. A DISTANCE OF 61.32 FEET;
THENCE N. 88°34'56" E. A DISTANCE OF 56.98 FEET;
THENCE N. 88°31'57" E. A DISTANCE OF 59.63 FEET;
THENCE S. 01°56'22" E. A DISTANCE OF 115.84 FEET;
THENCE S. 01°56'22" E. A DISTANCE OF 118.43 FEET;
THENCE S. 01°52'23" E. A DISTANCE OF 52.83 FEET;
THENCE S. 01°52'23" E. A DISTANCE OF 117.67 FEET;
THENCE S. 02°40'57" E. A DISTANCE OF 122.51 FEET;
THENCE S. 03°06'17" E. A DISTANCE OF 59.81 FEET;
THENCE S. 01°40'49" E. A DISTANCE OF 235.69 FEET;
THENCE S. 01°40'49" E. A DISTANCE OF 127.39 FEET;
THENCE S. 00°15'09" E. A DISTANCE OF 41.67 FEET;
THENCE S. 00°15'19" E. A DISTANCE OF 234.24 FEET;
THENCE S. 00°37'02" E. A DISTANCE OF 52.33 FEET;
THENCE N. 89°20'24" E. A DISTANCE OF 18.93 FEET;
THENCE S. 01°15'45" E. A DISTANCE OF 323.65 FEET;
THENCE S. 89°12'44" W. A DISTANCE OF 81.85 FEET;
THENCE S. 89°12'35" W. A DISTANCE OF 32.41 FEET;
THENCE S. 00°58'31" E. A DISTANCE OF 58.42 FEET;
THENCE S. 00°58'31" E. A DISTANCE OF 55.40 FEET;

THENCE S. 00°58'31" E. A DISTANCE OF 55.39 FEET;
THENCE S. 00°58'31" E. A DISTANCE OF 57.41 FEET;
THENCE S. 88°56'45" W. A DISTANCE OF 141.12 FEET;
THENCE S. 01°03'22" E. A DISTANCE OF 106.05 FEET;
THENCE S. 01°03'18" E. A DISTANCE OF 64.64 FEET;
THENCE S. 01°03'18" E. A DISTANCE OF 268.78 FEET;
THENCE N. 89°14'25" E. A DISTANCE OF 144.50 FEET;
THENCE S. 01°26'20" E. A DISTANCE OF 50.30 FEET;
THENCE S. 01°26'20" E. A DISTANCE OF 48.93 FEET;
THENCE S. 01°26'20" E. A DISTANCE OF 49.33 FEET;
THENCE S. 01°26'18" E. A DISTANCE OF 50.14 FEET;
THENCE S. 01°26'18" E. A DISTANCE OF 53.92 FEET;
THENCE S. 01°26'18" E. A DISTANCE OF 53.52 FEET;
THENCE S. 01°26'39" E. A DISTANCE OF 15.98 FEET;
THENCE N. 88°50'37" E. A DISTANCE OF 67.21 FEET;
THENCE S. 01°01'50" E. A DISTANCE OF 30.06 FEET;
THENCE S. 01°21'12" E. A DISTANCE OF 119.16 FEET;
THENCE S. 01°21'12" E. A DISTANCE OF 58.30 FEET;
THENCE S. 01°21'11" E. A DISTANCE OF 61.01 FEET;
THENCE S. 01°21'11" E. A DISTANCE OF 60.00 FEET;
THENCE S. 01°21'13" E. A DISTANCE OF 59.43 FEET;
THENCE S. 01°21'12" E. A DISTANCE OF 59.53 FEET;
THENCE S. 01°21'11" E. A DISTANCE OF 59.12 FEET;
THENCE S. 01°21'13" E. A DISTANCE OF 61.48 FEET;
THENCE S. 01°21'13" E. A DISTANCE OF 60.13 FEET;
THENCE S. 01°21'12" E. A DISTANCE OF 58.71 FEET;
THENCE S. 01°37'50" E. A DISTANCE OF 16.39 FEET;
THENCE S. 01°18'58" E. A DISTANCE OF 96.00 FEET;
THENCE S. 00°09'59" W. A DISTANCE OF 61.03 FEET;
THENCE S. 88°31'34 " W. A DISTANCE OF 136.70 FEET;
THENCE S. 00°07'01" W. A DISTANCE OF 101.08 FEET;
THENCE S. 01°50'53" E. A DISTANCE OF 99.18 FEET;
THENCE S. 00°51'22" E. A DISTANCE OF 200.34 FEET;
THENCE N. 83°36'15" E. A DISTANCE OF 70.53 FEET;
THENCE N. 83°33'38" E. A DISTANCE OF 300.32 FEET;
THENCE N. 83°33'38" E. A DISTANCE OF 33.39 FEET;
THENCE N. 83°35'11" E. A DISTANCE OF 46.66 FEET;
THENCE S. 01°30'38" E. A DISTANCE OF 244.10 FEET;
THENCE N. 88°39'39" E. A DISTANCE OF 228.21 FEET;
THENCE N. 88°40'27" E. A DISTANCE OF 85.19 FEET;
THENCE N. 88°39'22" E. A DISTANCE OF 56.15 FEET;
THENCE N. 88°39'09" E. A DISTANCE OF 59.35 FEET;
THENCE N. 88°38'57" E. A DISTANCE OF 55.78 FEET;
THENCE N. 88°38'45" E. A DISTANCE OF 58.13 FEET;

THENCE N. 88°38'33" E. A DISTANCE OF 57.67 FEET;
THENCE N. 88°38'21" E. A DISTANCE OF 57.21 FEET;
THENCE N. 88°38'11" E. A DISTANCE OF 56.87 FEET;
THENCE N. 88°38'01" E. A DISTANCE OF 54.78 FEET;
THENCE N. 88°37'53" E. A DISTANCE OF 55.12 FEET;
THENCE N. 88°37'45" E. A DISTANCE OF 57.98 FEET;
THENCE N. 88°37'38" E. A DISTANCE OF 56.28 FEET;
THENCE N. 88°37'31" E. A DISTANCE OF 59.24 FEET;
THENCE N. 88°37'31" E. A DISTANCE OF 60.15 FEET;
THENCE N. 88°37'15" E. A DISTANCE OF 59.67 FEET;
THENCE N. 88°37'17" E. A DISTANCE OF 60.85 FEET;
THENCE N. 87°43'40" E. A DISTANCE OF 63.05 FEET;
THENCE N. 88°58'53" E. A DISTANCE OF 23.47 FEET;
THENCE S. 01°37'05" E. A DISTANCE OF 37.71 FEET;
THENCE S. 01°37'02" E. A DISTANCE OF 244.43 FEET;
THENCE S. 01°36'23" E. A DISTANCE OF 238.01 FEET;
THENCE S. 01°34'49" E. A DISTANCE OF 617.92 FEET;
THENCE S. 01°35'39" E. A DISTANCE OF 41.32 FEET;

Back to the "Point of Beginning"

Said area containing 301,498,360± sq. ft. or 6,921.4499± ac.
more or less.

EXHIBIT C

INCREMENT DISTRICT LEGAL DESCRIPTIONS

DISTRICT – A

A TRACT OF LAND BEING A PART OF SECTIONS 13, 14, 23 and 24,
TOWNSHIP 20 N., RANGE 13 E. TULSA COUNTY, OKLAHOMA,
MORE PARTICULARLY DESCRIBED TO WIT:

COMMENCING AT THE SOUTHWEST CORNER OF THE SOUTHWEST QUARTER OF SECTION 14:
THENCE NORTH A DISTANCE OF 619.80 FEET;
THENCE EAST A DISTANCE OF 2,296.85 FEET TO THE
"POINT OF BEGINNING";

THENCE S. 00°47'48" E. A DISTANCE OF 623.92 FEET;
THENCE S. 00°47'48" E. A DISTANCE OF 755.50 FEET;
THENCE N. 85°09'00" W. A DISTANCE OF 79.57 FEET;
THENCE S. 01°35'06" W. A DISTANCE OF 574.42 FEET;
THENCE S. 02°12'47" W. A DISTANCE OF 742.52 FEET;
THENCE S. 51°47'29" E. A DISTANCE OF 599.52 FEET;
THENCE S. 53°19'18" E. A DISTANCE OF 381.00 FEET;
THENCE S. 57°44'01" E. A DISTANCE OF 729.47 FEET;
THENCE N. 87°57'49" E. A DISTANCE OF 1,784.37 FEET;
THENCE N. 60°56'43" E. A DISTANCE OF 81.59 FEET;
THENCE N. 20°59'34" E. A DISTANCE OF 730.05 FEET;
THENCE N. 13°11'26" E. A DISTANCE OF 1,041.95 FEET
THENCE N. 77°35'16" E. A DISTANCE OF 28.50 FEET;
THENCE N. 02°28'51" E. A DISTANCE OF 355.90 FEET;
THENCE N. 10°51'06" W. A DISTANCE OF 65.63 FEET;
THENCE N. 01°29'43" W. A DISTANCE OF 902.00 FEET;
THENCE N. 01°07'57" W. A DISTANCE OF 2,635.63 FEET;
THENCE N. 01°24'15" W. A DISTANCE OF 960.62 FEET;
THENCE N. 00°08'14" E. A DISTANCE OF 475.71 FEET;
THENCE S. 44°04'29" W. A DISTANCE OF 947.82 FEET;
THENCE S. 44°56'27" W. A DISTANCE OF 1,108.43 FEET;
THENCE S. 88°50'24" W. A DISTANCE OF 28.91 FEET;
THENCE S. 44°26'39" W. A DISTANCE OF 685.89 FEET;
THENCE S. 44°30'57" W. A DISTANCE OF 569.99 FEET;
THENCE S. 43°56'08" W. A DISTANCE OF 373.68 FEET;
THENCE S. 49°04'30" W. A DISTANCE OF 225.25 FEET;
THENCE S. 56°26'50" W. A DISTANCE OF 237.85 FEET;
THENCE S. 63°02'49" W. A DISTANCE OF 175.05 FEET;
THENCE S. 67°37'10" W. A DISTANCE OF 130.35 FEET;
THENCE S. 01°43'24" E. A DISTANCE OF 416.08 FEET;
THENCE S. 76°33'45" W. A DISTANCE OF 135.61 FEET;
THENCE S. 80°10'54.394" W. A DISTANCE OF 205.06334 FEET;
BACK TO THE "POINT OF BEGINNING"

SAID AREA CONTAINING 18,753,811± SQ. FT. OR 430.5283± AC. MORE OR LESS.

DISTRICT – B

A TRACT OF LAND BEING A PART OF SECTIONS 13 and 24,
TOWNSHIP 20 N, RANGE 13 E AND SECTIONS 18 and 19,
TOWNSHIP 20 N, RANGE 14 E, TULSA COUNTY, OKLAHOMA,
MORE PARTICULARLY DESCRIBED TO WIT:

COMMENCING AT THE NORTHEAST CORNER OF SECTION 13:
THENCE WEST A DISTANCE OF 38.28 FEET;
THENCE SOUTH A DISTANCE OF 54.27 FEET TO THE
"POINT OF BEGINNING";

THENCE S. 89°18'25" W. A DISTANCE OF 433.55 FEET;
THENCE S. 83°51'22" W. A DISTANCE OF 94.47 FEET;
THENCE S. 88°38'48" W. A DISTANCE OF 96.69 FEET;
THENCE S. 88°38'41" W. A DISTANCE OF 166.85 FEET;
THENCE S. 88°38'52" W. A DISTANCE OF 162.66 FEET;
THENCE S. 88°38'42" W. A DISTANCE OF 161.04 FEET;
THENCE S. 88°38'42" W. A DISTANCE OF 170.45 FEET;
THENCE S. 73°44'45" W. A DISTANCE OF 168.08 FEET;
THENCE N. 89°50'24" W. A DISTANCE OF 107.96 FEET;
THENCE N. 89°50'24" W. A DISTANCE OF 30.85 FEET;
THENCE ON A CURVE HAVING A CENTRAL ANGLE OF
22°37'58" A RADIUS OF 3,459.40 FEET AND AN ARC DISTANCE
OF 1,366.52 FEET, SAID CURVE HAVING A CHORD BEARING
OF S 76°0'44" W AND A CHORD DISTANCE OF 1,357.65 FEET;
THENCE S. 22°56'56" E. A DISTANCE OF 226.05 FEET;
THENCE S. 08°04'16" E. A DISTANCE OF 393.85 FEET
THENCE S. 89°56'25" E. A DISTANCE OF 64.20 FEET;
THENCE S. 03°32'56" E. A DISTANCE OF 235.81 FEET;
THENCE S. 00°07'49" W. A DISTANCE OF 1,093.13 FEET;
THENCE N. 89°52'05" E. A DISTANCE OF 13.21 FEET;
THENCE S. 00°00'47" E. A DISTANCE OF 320.00 FEET;
THENCE S. 01°26'28" W. A DISTANCE OF 2,473.15 FEET;
THENCE S. 00°27'17" E. A DISTANCE OF 772.73 FEET;
THENCE S. 20°51'39" E. A DISTANCE OF 754.76 FEET;
THENCE S. 15°50'30" E. A DISTANCE OF 1,410.42 FEET;
THENCE S. 14°22'38" E. A DISTANCE OF 135.59 FEET;
THENCE N. 88°31'10" E. A DISTANCE OF 779.05 FEET;
THENCE S. 01°01'09" E. A DISTANCE OF 506.19 FEET;
THENCE N. 88°30'28" E. A DISTANCE OF 3,283.10 FEET;
THENCE N. 00°37'08" E. A DISTANCE OF 3,475.95 FEET;
THENCE N. 01°13'46" E. A DISTANCE OF 2,859.46 FEET;
THENCE N. 00°58'03" E. A DISTANCE OF 2,204.18 FEET;

THENCE S. 89°22'09" W. A DISTANCE OF 338.99 FEET;
THENCE S. 88°25'33" W. A DISTANCE OF 356.35 FEET;
THENCE S. 88°26'11" W. A DISTANCE OF 161.19 FEET;
THENCE S. 88°27'46" W. A DISTANCE OF 98.519 FEET;
THENCE S. 83°13'22" W. A DISTANCE OF 106.78 FEET;
THENCE S. 89°08'42" W. A DISTANCE OF 114.32 FEET;
THENCE S. 88°17'54" W. A DISTANCE OF 344.82 FEET;
THENCE N. 01°32'34" W. A DISTANCE OF 9.08 FEET;
THENCE S. 88°41'16" W. A DISTANCE OF 406.82 FEET;
THENCE S. 88°40'56" W. A DISTANCE OF 146.77 FEET;
THENCE S. 83°03'22" W. A DISTANCE OF 10.26 FEET;
THENCE N. 86°24'20" W. A DISTANCE OF 84.26 FEET;
BACK TO THE "POINT OF BEGINNING"

SAID AREA CONTAINING 39,383,287± SQ. FT. OR 904.1159± AC. MORE OR LESS.

DISTRICT – C

LEGAL DESCRIPTION

AIR FORCE PLANT NO. 3

A TRACT OF LAND IN SECTION 24 AND 25, OF TOWNSHIP 20 NORTH,
RANGE 13 EAST OF THE INDIAN BASE AND MERIDIAN, TULSA COUNTY,
STATE OF OKLAHOMA, BEING MORE PARTICULARLY DESCRIBED AS FOLLOWS, TO WIT:

BEGINNING AT THE SOUTHEAST CORNER OF SAID SECTION 24

THENCE N 89° 55' 17" W A DISTANCE OF 60.10 FEET TO THE "POINT OF BEGINNING";

THENCE N 00° 00' 42" E A DISTANCE OF 795.72 FEET TO A POINT
THENCE N 89° 55' 17" W A DISTANCE OF 344.05 FEET TO A POINT;
THENCE N 52° 50' 16" W A DISTANCE OF 155.96 FEET TO A POINT;
THENCE N 89° 54' 59" W A DISTANCE OF 47.63 FEET TO A POINT;
THENCE S 50° 43' 47" W A DISTANCE OF 53.84 FEET TO A POINT;
THENCE N 89° 55' 17" W A DISTANCE OF 2,689.25 FEET TO A POINT;
THENCE S 00° 05' 57" E A DISTANCE OF 271.34 FEET TO A POINT;
THENCE S 34° 12' 15" W A DISTANCE OF 356.07 FEET TO A POINT;
THENCE S 02° 17' 54" W A DISTANCE OF 1,607.50 FEET TO A POINT;
THENCE N 89° 52' 01" W A DISTANCE OF 65.74 FEET TO A POINT;
THENCE S 00° 02' 45" W A DISTANCE OF 1,681.02 FEET TO A POINT;
THENCE N 84° 36' 22" E A DISTANCE OF 3,217.63 FEET TO A POINT;
THENCE N 05° 23' 38" W A DISTANCE OF 50.00 FEET TO A POINT;
THENCE N 84° 36' 22" E A DISTANCE OF 380.06 FEET TO A POINT;
THENCE N 00° 00' 42" E A DISTANCE OF 2,604.81 FEET TO THE
"POINT OF BEGINNING";

CONTAINING 12,818,757 SQUARE FEET OR 294.2781 ACRES MORE OR LESS.

DISTRICT – D

A TRACT OF LAND BEING A PART OF SECTIONS 23, 24, 25 AND 26,
TOWNSHIP 20 N, RANGE 13 E, TULSA COUNTY, OKLAHOMA, MORE
PARTICULARLY DESCRIBED TO WIT:

COMMENCING AT THE SOUTHWEST CORNER OF SECTION 26:
THENCE EAST A DISTANCE OF 1,317.095 FEET;
TO THE "POINT OF BEGINNING"

THENCE N. 88°50'32" E. A DISTANCE OF 3,478.59 FEET;
THENCE S. 02°03'10" E. A DISTANCE OF 52.17 FEET;
THENCE S. 00°41'59" E. A DISTANCE OF 79.47 FEET;
THENCE S. 01°15'40" E. A DISTANCE OF 64.62 FEET;
THENCE S. 01°15'53" E. A DISTANCE OF 64.34 FEET;
THENCE S. 01°16'10" E. A DISTANCE OF 68.04 FEET;
THENCE S. 01°16'29" E. A DISTANCE OF 78.83 FEET;
THENCE S. 01°16'47" E. A DISTANCE OF 95.80 FEET;
THENCE S. 01°32'12" E. A DISTANCE OF 86.92 FEET;
THENCE N. 88°49'52" E. A DISTANCE OF 70.09 FEET;
THENCE N. 88°49'44" E. A DISTANCE OF 91.82 FEET
THENCE N. 88°49'30" E. A DISTANCE OF 56.73 FEET;
THENCE N. 88°49'07" E. A DISTANCE OF 63.12 FEET;
THENCE N. 88°48'36" E. A DISTANCE OF 61.84 FEET;
THENCE N. 88°47'34" E. A DISTANCE OF 20.28 FEET;
THENCE N. 88°48'22" E. A DISTANCE OF 50.94 FEET;
THENCE N. 88°46'53" E. A DISTANCE OF 59.32 FEET;
THENCE S. 89°38'43" E. A DISTANCE OF 1,916.61 FEET;
THENCE N. 88°51'34" E. A DISTANCE OF 695.73 FEET;
THENCE N. 00°09'57" W. A DISTANCE OF 597.79 FEET;
THENCE N. 21°31'10" E. A DISTANCE OF 45.80 FEET;
THENCE N. 01°14'27" W. A DISTANCE OF 39.25 FEET;
THENCE N. 88°50'02" E. A DISTANCE OF 529.44 FEET;
THENCE N. 88°52'54" E. A DISTANCE OF 731.58 FEET;
THENCE N. 88°50'33" E. A DISTANCE OF 719.65 FEET;
THENCE N. 02°09'16" W. A DISTANCE OF 9.87 FEET;
THENCE N. 88°58'51" E. A DISTANCE OF 610.09 FEET;
THENCE N. 01°11'31" W. A DISTANCE OF 1,268.14 FEET;
THENCE S. 88°52'19" W. A DISTANCE OF 10.48 FEET;
THENCE N. 01°13'20" W. A DISTANCE OF 377.78 FEET;
THENCE S. 88°45'45" W. A DISTANCE OF 598.43 FEET;
THENCE S. 89°00'36" W. A DISTANCE OF 648.97 FEET;
THENCE S. 01°12'38" E. A DISTANCE OF 131.32 FEET;
THENCE S. 88°20'36" W. A DISTANCE OF 10.21 FEET;
THENCE S. 01°09'37" E. A DISTANCE OF 246.47 FEET;
THENCE S. 87°56'43" W. A DISTANCE OF 62.15 FEET;
THENCE S. 88°58'09" W. A DISTANCE OF 688.86 FEET;
THENCE S. 88°50'00" W. A DISTANCE OF 571.25 FEET;

THENCE S. 01°11'31" E. A DISTANCE OF 478.07 FEET;
THENCE S. 01°11'21" E. A DISTANCE OF 178.28 FEET;
THENCE S. 89°01'11" W. A DISTANCE OF 656.66 FEET;
THENCE S. 01°03'13" E. A DISTANCE OF 229.11 FEET;
THENCE N. 89°50'26" W. A DISTANCE OF 1,186.46 FEET;
THENCE S. 00°05'45" E. A DISTANCE OF 460.20 FEET;
THENCE S. 88°51'44" W. A DISTANCE OF 471.03 FEET;
THENCE S. 88°51'44" W. A DISTANCE OF 318.21 FEET;
THENCE N. 01°10'17" W. A DISTANCE OF 331.31 FEET;
THENCE N. 01°10'16" W. A DISTANCE OF 316.22 FEET;
THENCE N. 01°09'35" W. A DISTANCE OF 506.55 FEET;
THENCE N. 01°10'10" W. A DISTANCE OF 165.21 FEET;
THENCE N. 01°09'49" W. A DISTANCE OF 591.79 FEET;
THENCE N. 01°10'14" W. A DISTANCE OF 197.74 FEET;
THENCE N. 01°10'07" W. A DISTANCE OF 532.46 FEET;
THENCE N. 01°10'18" W. A DISTANCE OF 1,769.02 FEET;
THENCE N. 40°00'44" E. A DISTANCE OF 448.75 FEET;
THENCE N. 37°02'39" E. A DISTANCE OF 407.09 FEET;
THENCE N. 52°53'24" W. A DISTANCE OF 981.98 FEET;
THENCE N. 52°55'49" W. A DISTANCE OF 612.76 FEET;
THENCE S. 88°13'33" W. A DISTANCE OF 546.86 FEET;
THENCE S. 88°43'22" W. A DISTANCE OF 973.28 FEET;
THENCE S. 88°35'11" W. A DISTANCE OF 1,195.86 FEET;
THENCE S. 02°24'38" W. A DISTANCE OF 763.83 FEET;
THENCE S. 03°23'42" W. A DISTANCE OF 961.47 FEET;
THENCE S. 19°10'45" W. A DISTANCE OF 198.06 FEET;
THENCE S. 60°45'04" W. A DISTANCE OF 233.05 FEET;
THENCE N. 86°34'28" W. A DISTANCE OF 227.00 FEET;
THENCE N. 66°45'48" W. A DISTANCE OF 88.19 FEET;
THENCE N. 46°41'30" W. A DISTANCE OF 143.09 FEET;
THENCE N. 35°30'40" W. A DISTANCE OF 54.65 FEET;
THENCE N. 26°26'29" W. A DISTANCE OF 74.69 FEET;
THENCE N. 14°19'03" W. A DISTANCE OF 73.06 FEET;
THENCE N. 06°05'06" W. A DISTANCE OF 86.66 FEET;
THENCE N. 01°26'37" W. A DISTANCE OF 598.05 FEET;
THENCE N. 23°22'18" W. A DISTANCE OF 91.11 FEET;
THENCE N. 32°20'30" W. A DISTANCE OF 133.18 FEET;
THENCE S. 87°50'53" W. A DISTANCE OF 117.41 FEET;
THENCE S. 00°30'31" W. A DISTANCE OF 16.85 FEET;
THENCE S. 88°57'35" W. A DISTANCE OF 683.75 FEET;
THENCE N. 85°23'50" W. A DISTANCE OF 111.05 FEET;
THENCE S. 88°37'34" W. A DISTANCE OF 128.759 FEET;
THENCE S. 00°24'58" W. A DISTANCE OF 9.66 FEET;
THENCE S. 87°56'07" W. A DISTANCE OF 64.64 FEET;
THENCE S. 01°56'22" E. A DISTANCE OF 115.84 FEET;
THENCE S. 01°54'13" E. A DISTANCE OF 118.43 FEET;
THENCE S. 01°57'14" E. A DISTANCE OF 52.83 FEET;
THENCE S. 02°17'29" E. A DISTANCE OF 117.70 FEET;

THENCE S. 02°16'51" E. A DISTANCE OF 122.47 FEET;
THENCE S. 03°16'13" E. A DISTANCE OF 59.81 FEET;
THENCE S. 01°40'49" E. A DISTANCE OF 363.09 FEET;
THENCE S. 00°15'19" E. A DISTANCE OF 275.88 FEET;
THENCE S. 00°37'03" E. A DISTANCE OF 46.21 FEET;
THENCE S. 00°37'03" E. A DISTANCE OF 6.125 FEET;
THENCE N. 89°20'23" E. A DISTANCE OF 18.93 FEET;
THENCE S. 01°15'45" E. A DISTANCE OF 323.65 FEET;
THENCE S. 89°12'44" W. A DISTANCE OF 114.27 FEET;
THENCE S. 00°58'32" E. A DISTANCE OF 113.819 FEET;
THENCE S. 00°58'31" E. A DISTANCE OF 112.80 FEET;
THENCE S. 88°56'45" W. A DISTANCE OF 141.12 FEET;
THENCE S. 01°03'22" E. A DISTANCE OF 439.48 FEET;
THENCE N. 89°14'25" E. A DISTANCE OF 144.49 FEET;
THENCE S. 01°26'20" E. A DISTANCE OF 322.13 FEET;
THENCE N. 88°50'36" E. A DISTANCE OF 67.21 FEET;
THENCE S. 01°17'16" E. A DISTANCE OF 149.22 FEET;
THENCE S. 01°21'13" E. A DISTANCE OF 58.30 FEET;
THENCE S. 01°00'19" E. A DISTANCE OF 61.01 FEET;
THENCE S. 01°42'24" E. A DISTANCE OF 59.99 FEET;
THENCE S. 01°21'13" E. A DISTANCE OF 59.43 FEET;
THENCE S. 01°21'12" E. A DISTANCE OF 49.21 FEET;
THENCE S. 01°21'12" E. A DISTANCE OF 69.44 FEET;
THENCE S. 01°21'13" E. A DISTANCE OF 61.48 FEET;
THENCE S. 00°49'16" E. A DISTANCE OF 60.13 FEET;
THENCE S. 01°53'56" E. A DISTANCE OF 58.71 FEET;
THENCE S. 01°37'48" E. A DISTANCE OF 16.39 FEET;
THENCE S. 01°18'58" E. A DISTANCE OF 95.99 FEET;
THENCE S. 00°09'59" W. A DISTANCE OF 61.03 FEET;
THENCE S. 88°31'34" W. A DISTANCE OF 136.69 FEET;
THENCE S. 01°50'52" E. A DISTANCE OF 101.04 FEET;
THENCE S. 01°50'53" E. A DISTANCE OF 99.179 FEET;
THENCE S. 00°51'22" E. A DISTANCE OF 200.34 FEET;
THENCE N. 83°36'14" E. A DISTANCE OF 70.53 FEET;
THENCE N. 83°35'37" E. A DISTANCE OF 61.95 FEET;
THENCE N. 83°36'15" E. A DISTANCE OF 238.34 FEET;
THENCE N. 83°39'09" E. A DISTANCE OF 33.39 FEET;
THENCE N. 83°13'43" E. A DISTANCE OF 46.689 FEET;
THENCE S. 01°30'38" E. A DISTANCE OF 244.12 FEET;
THENCE N. 88°39'39" E. A DISTANCE OF 228.21 FEET;
THENCE N. 88°39'36" E. A DISTANCE OF 85.19 FEET;
THENCE N. 88°39'23" E. A DISTANCE OF 56.15 FEET;
THENCE N. 88°39'09" E. A DISTANCE OF 59.35 FEET;
THENCE N. 88°38'58" E. A DISTANCE OF 55.779 FEET;
THENCE N. 88°38'44" E. A DISTANCE OF 58.13 FEET;
THENCE N. 88°29'17" E. A DISTANCE OF 48.93 FEET;
THENCE N. 89°30'25" E. A DISTANCE OF 8.74 FEET;
THENCE N. 88°38'21" E. A DISTANCE OF 57.21 FEET;

THENCE N. 88°38'11" E. A DISTANCE OF 56.869 FEET;
THENCE N. 88°38'01" E. A DISTANCE OF 54.78 FEET;
THENCE N. 88°37'53" E. A DISTANCE OF 55.19 FEET;
THENCE N. 88°37'44" E. A DISTANCE OF 57.97 FEET;
THENCE N. 88°37'38" E. A DISTANCE OF 56.28 FEET;
THENCE N. 88°37'31" E. A DISTANCE OF 59.24 FEET;
THENCE N. 88°37'26" E. A DISTANCE OF 60.15 FEET;
THENCE N. 88°37'21" E. A DISTANCE OF 59.67 FEET;
THENCE N. 88°37'17" E. A DISTANCE OF 60.85 FEET;
THENCE N. 87°43'40" E. A DISTANCE OF 63.05 FEET;
THENCE S. 88°58'54" E. A DISTANCE OF 23.47 FEET;
THENCE S. 01°37'01" E. A DISTANCE OF 37.73 FEET;
THENCE S. 01°36'53" E. A DISTANCE OF 244.42 FEET;
THENCE S. 01°36'31" E. A DISTANCE OF 238.01 FEET;
THENCE S. 01°35'01" E. A DISTANCE OF 617.92 FEET;
THENCE S. 01°26'43.7077" E. A DISTANCE OF 41.4964097 FEET;
BACK TO THE "POINT OF BEGINNING"

SAID AREA CONTAINING 35,854,400 ± SQ. FT. OR 823.1038 ± AC.
MORE OR LESS.

DISTRICT – E

A TRACT OF LAND BEING A PART OF SECTION 18, TOWNSHIP 20 N, RANGE 14 E, TULSA COUNTY,
OKLAHOMA, MORE PARTICULARLY DESCRIBED TO WIT:

COMMENCING AT THE SOUTHWEST CORNER OF THE SOUTHEAST QUARTER OF SECTION 18:

THENCE EAST A DISTANCE OF 493.46 FEET;
THENCE NORTH A DISTANCE OF 16.67 FEET; TO THE "POINT OF BEGINNING"

THENCE N. 01°49'57" E. A DISTANCE OF 3,982.76 FEET;
THENCE S. 88°40'01" W. A DISTANCE OF 142.52 FEET;
THENCE N. 01°31'51" E. A DISTANCE OF 1,158.17 FEET;
THENCE S. 88°28'16" E. A DISTANCE OF 493.28 FEET;
THENCE N. 86°15'48" E. A DISTANCE OF 249.91 FEET;
THENCE N. 00°21'12" W. A DISTANCE OF 13.19 FEET;
THENCE N. 89°14'49" E. A DISTANCE OF 49.84 FEET;
THENCE S. 68°00'40" E. A DISTANCE OF 326.64 FEET;
THENCE S. 45°59'02" E. A DISTANCE OF 579.23 FEET;
THENCE S. 28°21'26" E. A DISTANCE OF 393.84 FEET;
THENCE S. 04°50'05" E. A DISTANCE OF 803.20 FEET;
THENCE S. 01°16'38" E. A DISTANCE OF 715.82 FEET;
THENCE S. 25°54'42" W. A DISTANCE OF 73.20 FEET;
THENCE S. 88°38'57" W. A DISTANCE OF 1,296.76 FEET;
THENCE S. 02°21'10" W. A DISTANCE OF 723.71 FEET;
THENCE S. 88°46'24" W. A DISTANCE OF 187.89 FEET;
THENCE S. 00°55'05" E. A DISTANCE OF 320.00 FEET;

THENCE N. 88°49'52" E. A DISTANCE OF 174.08 FEET;
THENCE S.01°55'40" W. A DISTANCE OF 280.20 FEET;
THENCE N. 88°42'37" E. A DISTANCE OF 1,063.37 FEET;
THENCE S. 00°53'22" E. A DISTANCE OF 191.19 FEET;
THENCE S. 42°59'53" W. A DISTANCE OF 246.87 FEET;
THENCE ON A CURVE HAVING A CENTRAL ANGLE OF
43°06'58" A RADIUS OF 531.00 FEET AND AN ARC DISTANCE
OF 400.49 FEET, SAID CURVE HAVING A CHORD BEARING
OF S.18°16'32" W. AND A CHORD DISTANCE OF 390.22 FEET;
THENCE S. 00°44'27" E. A DISTANCE OF 229.38 FEET;
THENCE S. 01°50'14" W. A DISTANCE OF 391.05 FEET;
THENCE S. 89°42'25" W. A DISTANCE OF 1,187.78 FEET;BACK TO THE "POINT OF BEGINNING"

SAID AREA CONTAINING 5,993,748.± SQ. FT. OR 137.60.± AC. MORE OR LESS.

A TRACT OF LAND BEING A PART OF SECTIONS 19 AND 30,TOWNSHIP 20 N, RANGE 14 E, TULSA COUNTY,
OKLAHOMA, MORE PARTICULARLY DESCRIBED TO WIT:

COMMENCING AT THE SOUTHWEST CORNER OF THE NORTHWEST QUARTER OF SECTION 30:
THENCE N. 88°40'14" E. A DISTANCE OF 136.485 FEET;
THENCE N. 01°19'57" W A DISTANCE OF 17.526 FEET TO THE "POINT OF BEGINNING";

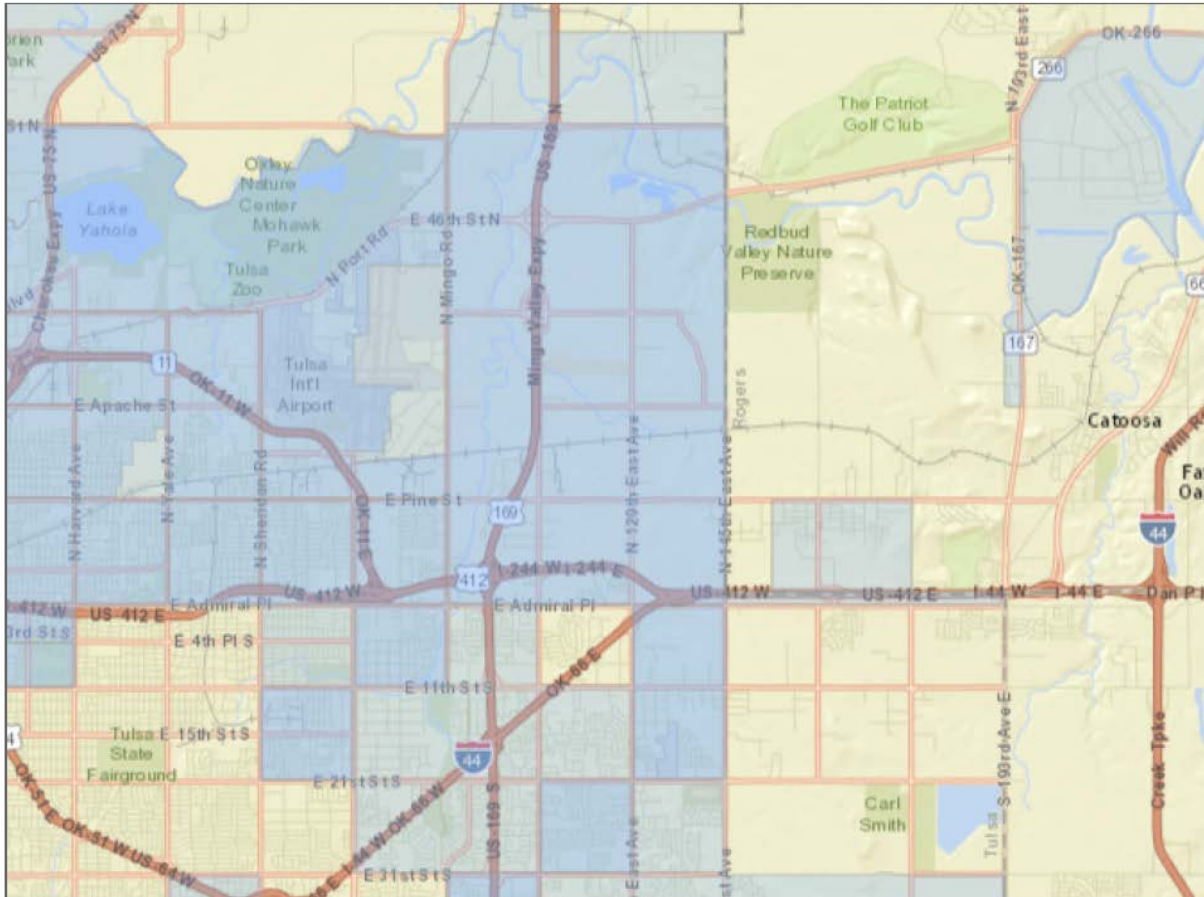
THENCE N. 83°05'55" E. A DISTANCE OF 1,168.11 FEET;
THENCE N. 84°42'30" E. A DISTANCE OF 1,692.7614 FEET;
THENCE N. 84°36'50" E. A DISTANCE OF 1,674.1302 FEET;
THENCE N. 08°22'48" E. A DISTANCE OF 305.736 FEET;
THENCE S. 81°29'56" E. A DISTANCE OF 25.00 FEET;
THENCE STARTING ANGLE OF N 82°39'26" W AND AN ENDING ANGLE OF S 88°51'24" W
A CURVE HAVING A CENTRAL ANGLE OF 8°29'11" A RADIUS OF 8,469.37 FEET AND AN
ARC DISTANCE OF 1,254.426 FEET, SAID CURVE HAVING A CHORD BEARING OF
N 03°05'59" E AND A CHORD DISTANCE OF 1,253.298 FEET;
THENCE S. 89°59'07" E. A DISTANCE OF 25.00 FEET;
THENCE N. 00°00'53" W. A DISTANCE OF 659.245 FEET;
THENCE S. 89°56'35" W. A DISTANCE OF 50.00 FEET;
THENCE N. 00°00'53" W. A DISTANCE OF 687.496 FEET;
THENCE N. 11°15'36" W. A DISTANCE OF 51.147 FEET;
THENCE N. 00°00'53" E. A DISTANCE OF 1,647.88 FEET;
THENCE N. 02°48'49" W. A DISTANCE OF 1,451.11 FEET;
THENCE STARTING ANGLE OF S 36°19'14" W AND AN ENDING ANGLE OF S 87°42'22" W
A CURVE HAVING A CENTRAL ANGLE OF 51°23'08" A RADIUS OF 325 FEET AND AN ARC
DISTANCE OF 291.479 FEET;
SAID CURVE HAVING A CHORD BEARING OF N 27°59'12" W AND A CHORD
DISTANCE OF 281.805 FEET;
THENCE N. 52°31'18" W. A DISTANCE OF 481.66 FEET;
THENCE N. 26°24'46" W. A DISTANCE OF 319.092 FEET;
THENCE N. 00°00'37" W. A DISTANCE OF 210.00 FEET;
THENCE N. 50°21'56" W. A DISTANCE OF 392.011 FEET;

THENCE S. 89°59'21" W. A DISTANCE OF 855.6399 FEET;
THENCE S. 00°41'25" W. A DISTANCE OF 5,267.632 FEET;
THENCE S. 06°45'40" E. A DISTANCE OF 177.2613 FEET;
THENCE N. 89°57'46" W. A DISTANCE OF 1,200.8185 FEET;
THENCE N. 89°33'18" W. A DISTANCE OF 117.97 FEET;
THENCE N.00°00'00" E. A DISTANCE OF 911.01 FEET;
THENCE N. 83°56'22" W. A DISTANCE OF 1,485.89 FEET;
THENCE S. 01°11'11" E. A DISTANCE OF 824.727 FEET;
THENCE S. 89°56'35" E. A DISTANCE OF 10.00 FEET;
THENCE S. 01°10'21" E. A DISTANCE OF 1,149.485 FEET;
THENCE S. 88°49'39" W. A DISTANCE OF 5.00 FEET;
THENCE S. 01°14'53" E. A DISTANCE OF 1,350.504 FEET;
THENCE S. 21°47'51" E. A DISTANCE OF 94.532 FEET;BACK TO THE "POINT OF BEGINNING"

SAID AREA CONTAINING 20,993,898.± SQ. FT. OR 481.9536.± AC. MORE OR LESS.

EXHIBIT D: Tulsa International Airport-Area Enterprise Zones

Enterprise Zones effective July 1, 2015 through June 30, 2016. Please contact Lesli Walsh at Lesli_walsh@OKCommerce.gov 405.815.5120 for additional information.



Blue Shaded Area = Designated Enterprise Zones

City of Tulsa, Esri, HERE, DeLorme, NGA, USGS