



ARCHITECTURE
INTERIORS
ENGINEERING

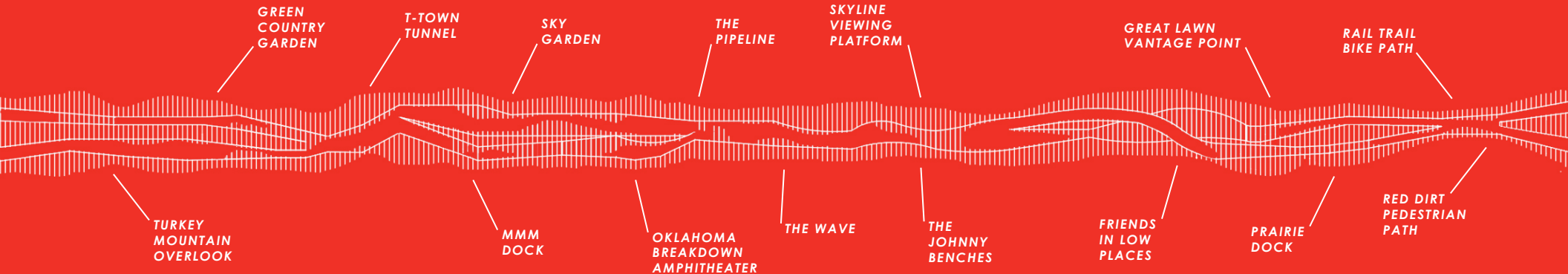


THE CROSSING

The crossing has been a part of Tulsa history for more than 100 years. During this time our city has grown into a thriving city providing opportunities across generations from all walks of life. We propose a new, modern form that creates a natural, flowing sense of movement as it is experienced. Alongside Tulsa's long sought after goal of "water in the river," this distinctive form creates a memorable landmark as well as a sculptural addition to our city's skyline and the revitalized riverfront.

Bridges represent connection, and this crossing offers the opportunity to bring our city closer together through the design of the bridge by incorporating many vignettes and activities along the full length of the structure. Each area is named to embrace a fun or defining piece of Tulsa History. There are places for reflection and opportunities to sit and take in the beautiful views of Turkey Mountain, downtown, the river, and the amazing Gathering Place without disrupting the flow of walkers, joggers, or cyclists. Green spaces with native local flora reach out from either bank and create a visually open separation between the entwined bicycle and pedestrian trails.

Paths are carved out of a series of fins, spaced to provide shade without limiting views. Twists in these trails keep visitors engaged and encourage progression and interaction at every stage of the crossing. Rises create 360° views, and dips lower toward the water to form multiple fishing docks for recreation and a small amphitheater, all to showcase the myriad of wonders today's Tulsa has to offer.



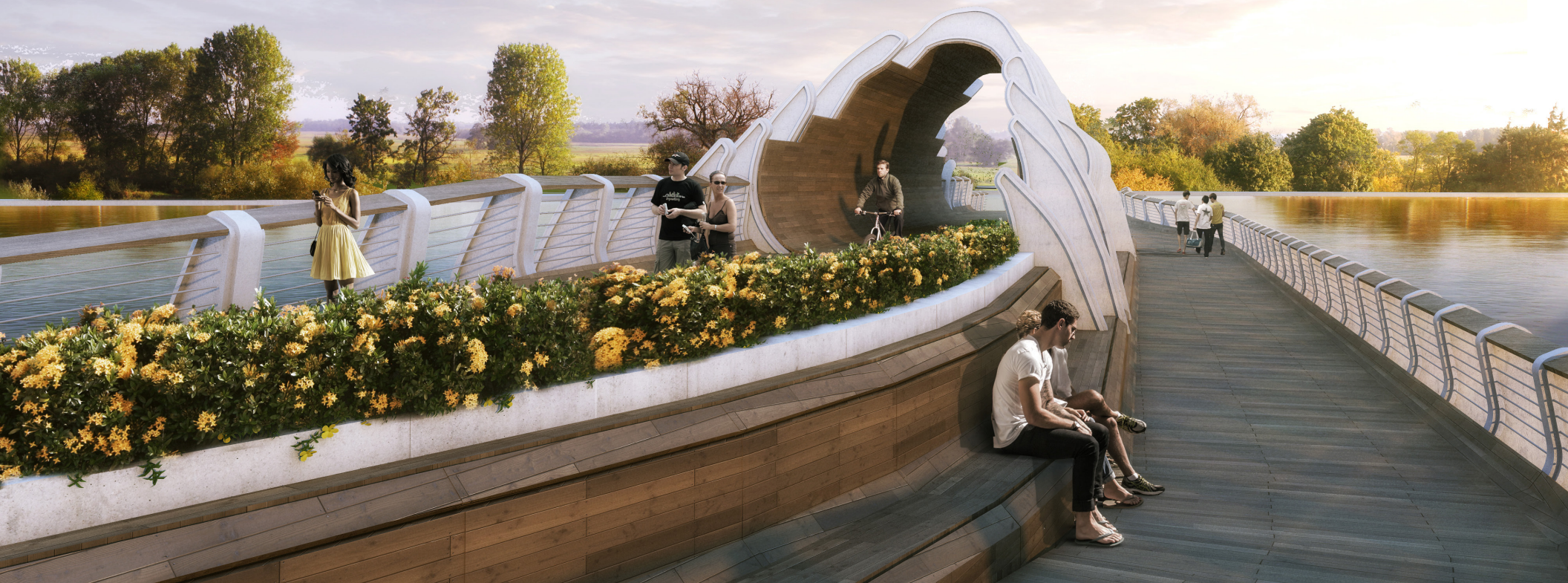
The covered areas alternate, providing shade to both the pedestrian and the bike paths. Green spaces and organic materials separate the paths for safety. Varying heights of observation areas allow for unobstructed views of Tulsa, including the Great Lawn at A Gathering Place for Tulsa, downtown, and Turkey Mountain.



The design incorporates opportunities for connection throughout the length of the bridge. This fishing dock is lowered and just off the pedestrian path. Other areas off the path include sections with amphitheater seating for gathering, picnics, or personal reflection.



The bridge features covered or partially-covered areas to provide shade to patrons. These areas are created by extending the forms from the structure.



From the water, the fin structures create unique shadows and appear to change the form of the bridge throughout the course of the day.

